

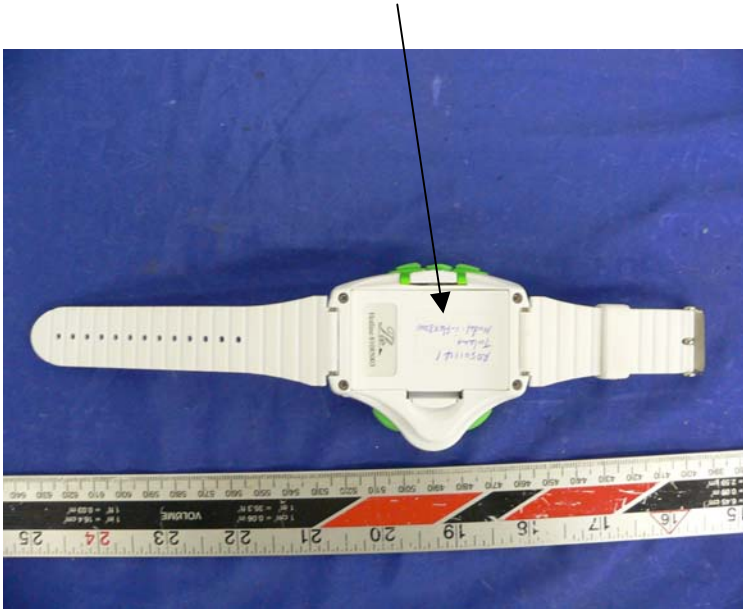
APPENDIX A - FCC ID LABELING AND LOCATION

Proposed FCC ID Labeling

FCC ID: SXLI-FLEX8200

Proposed FCC ID Location

Bottom View of EUT / Proposed Label Location



Labeling Requirement

Each equipment for which a type acceptance applications is filed on or after May 1, 1981, shall bear an identification plate or label pursuant to §2.295 (Identification of Equipment) and §2.926 (FCC identifier)

In August 1996 the Federal Communications Commissions (FCC) adopted RF exposure guidelines with safety levels for hand-held wireless devices.

Generally users manual contains a RF exposure statement to indicate compliance with FCC requirements.

The users manual should also contain required information and instruction pursuant to 95.653.

