



HRT 300

USER GUIDE

Table of Contents

FIRST TIME USE	4
TIME, DATE AND TIME ZONE CONFIGURATION	4
TOUCH SCREEN OPERATIONS	5
USING THE STYLUS	5
GUIDELINE FOR INSTALLING SIM/SAM CARD	5
TO INSERT THE SIM CARD	6
TO INSERT THE SAM CARDS	6
GUIDELINE FOR INSTALLING MICRO SD CARD	7
START MENU	8
SHELL TASKBAR	9
THE TASKBAR APPEARS ON THE BOTTOM OF YOUR HRT300/500/700SCREEN.	9
CUSTOMIZING YOUR HRT 300	10
LCD BRIGHTNESS CONTROL	11
KEYPAD LIGHT CONTROL	13
POWER	14
SOFTWARE INPUT PANEL (SIP)	15
CONTROLS AND INTERFACES	16
DISPLAY	17
KEYBOARD	18
AUDIO VOLUME	18

STYLUS PROPERTY	19
NETWORK AND DIAL-UP CONNECTION	19
REGIONAL SETTING	20
OWNER	20
PC CONNECTION	21
STORAGE PROPERTIES	22
SYSTEM PROPERTY	22
PASSWORD	23
SCREEN ROTATION	23
TASKBAR & SECURE SHELL SETTING	24
BLUETOOTH DEVICE PROPERTIES	24
INPUT PANEL SELECTION	25
DATE & TIME SETTING	25
INTERNET OPTIONS	26
REMOVE PROGRAMS	26
INTERNET EXPLORER	27

FEATURES **30**

WIRELESS LAN (Wi-Fi) USAGE	30
BLUETOOTH USAGE	32
USING THE BARCODE SCANNER	36
USING THE CONTACT CARD READER	36
USING THE CONTACTLESS CARD READER	37
USING THE GPS	37

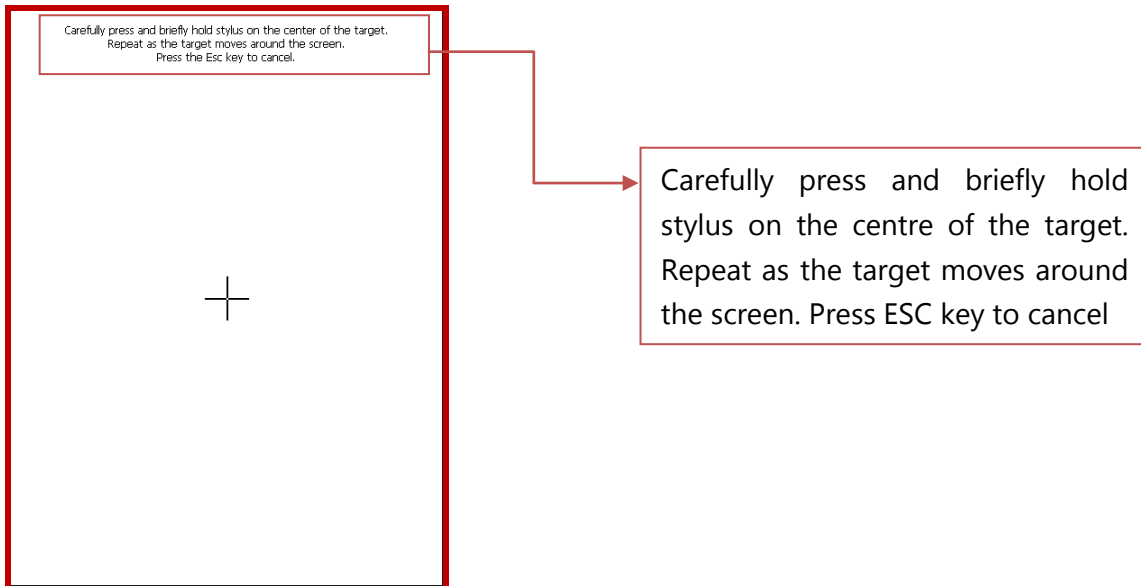
APPENDIX: TROUBLESHOOTING GUIDE **38**

RESET THE HRT300 AND CLEAR MEMORY	38
IF HRT300/500/700 RUNS OUT OF MEMORY	40
SCREEN FREEZES OR RESPONDS SLOWLY	41
INACCURATE RESPONSE TO STYLUS TAPS	41
NETWORK CONNECTION PROBLEMS	42
ROUTINE MAINTENANCE	42
BATTERY GUIDELINES	43
TRAVEL GUIDELINES	43
SHIPPING GUIDELINES	44

First Time Use

Once the charging has completed, turn on the unit by pressing the power button.
On the first time basis, it is advisable to calibrate the stylus calibration by going to:

Start -> Settings -> Control Panel -> Stylus.

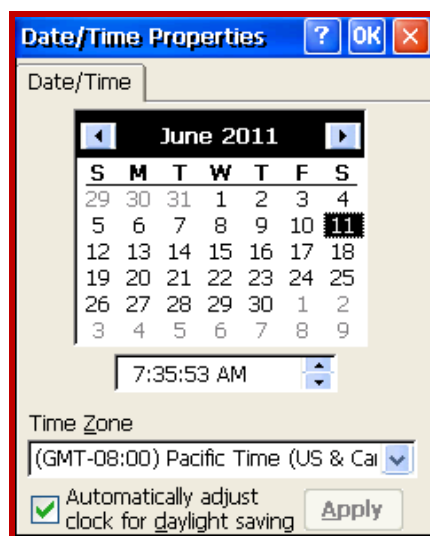


Follow the cursor and tap on it. After this, Time, Date and Time Zone configuration screen will be required to be set as the default time, date and time zone differ from places to places.

Time, Date and Time Zone configuration

Go to **Start -> Settings -> Control Panel -> Date/Time.**

"Time, Date and Time Zone configuration" application will be shown as below.



Touch Screen Operations

The following defines the various operations that you can perform with the stylus.

Tap	Touch the screen once with the stylus to select items or options
Double Tap	Tap the item twice to open or execute a program
Drag	Hold the stylus on the screen and drag across the screen to select text and images. Drag in a list to select multiple items

Using the Stylus

Data input and virtually all other operations are performed using a stylus, which is housed inside the stylus holder at the right corner (left corner) of the HRT300/500/700.

IMPORTANT

- *Avoid misplace or lose the stylus by always storing it in the stylus holder when not in use*
- *Avoid breaking the tip of the stylus.*
- *Use only the stylus that comes with the HRT300/500/700, or some other stylus type instrument with a soft, blunt point to perform touch screen operations. Never use a pen, pencil, or other sharp writing element.*

Guideline for Installing SIM/SAM card

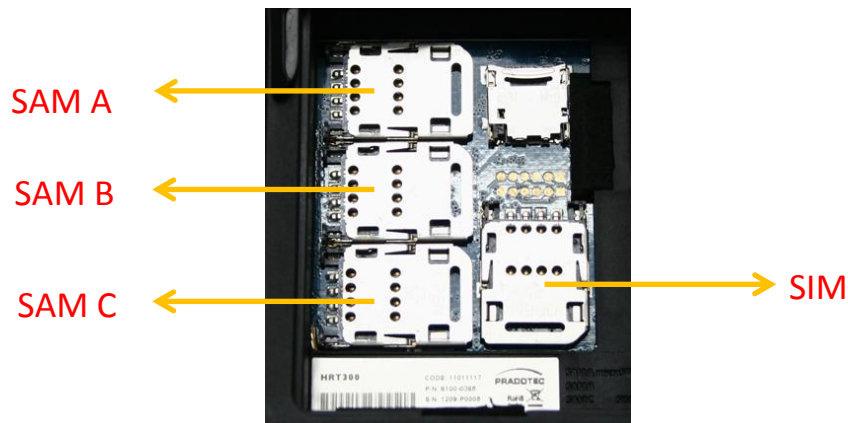
When you subscribe to a Cellular Network, you are provided with a SIM card loaded card loaded with your subscription details (PIN, optional services available and etc).

WARNING

- *Keep all SIM cards out of the reach of children.*
- *The SIM card and its contacts can be easily damaged by scratches or bending.*
- *Be careful when handling, inserting or removing the card.*
- *Before installing the SIM card, always make sure that the HRT300/500/700 is fully charged as the application will not work properly with insufficient amount of power.*

To insert the SIM card

- 1) Firstly closed all the programs and switch off the unit
- 2) Removed the hand strap
- 3) Unlock both wing lock
- 4) Removed the Battery cover
- 5) Removed the Battery pack
- 6) Unlock the SIM Slot and pull back the cover until easy for insertion as shown below
- 7) When inserting the SIM card, ensure that the cut corner faces top right
- 8) and the gold contacts of the card face into the unit



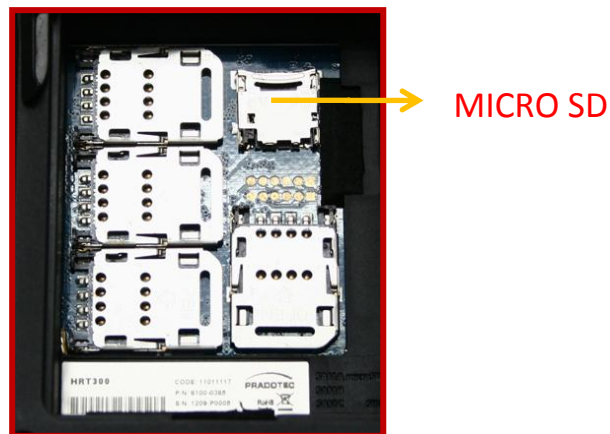
- 9) Push down the SIM slot cover and slide outward to lock it
- 10) Place the battery pack followed by battery cover
- 11) Push the wing lock to secured the battery cover and finally install back the hand strap

To insert the SAM cards

- 1) It will be the same as inserting the SIM card, but on the others three slots
- 2) SAM card is for internal security

Guideline For Installing Micro SD Card

- 1) Firstly closed all the programs and switch off the unit
- 2) Removed the hand strap
- 3) Unlock both wing lock
- 4) Removed the Battery cover
- 5) Removed the Battery pack
- 6) Unlock the Micro SD slot and pull back the cover until easy for insertion as shown below
- 7) When inserting the Micro SD card, ensure that the gold contacts of the card face into the unit



- 8) Push down the Micro SD slot cover and slide inward to lock it
- 9) Place the battery pack followed by battery cover
- 10) Push the wing lock to secured the battery cover and finally install back the hand strap

Start Menu

Your HRT300/500/700 is pre-installed with a collection of useful programs. These include Microsoft WordPad and customized programs. You can select the program you want from the Start button or by tapping on the screen; a list of customized programs will be shown.



Taskbar Items

The Control Panel includes the following standard items which allow user to customize system wide properties.

Status Icon

Meaning



Start Menu, Tap to switch to a program



Indicate unit connected to PC ActiveSync



Batteries are charging



Batteries are fully charged



Batteries are low



Tap for display or hide keyboard, tap and hold to choose other input method



Quick launch menu

Shell taskbar

The taskbar appears on the bottom of your HRT300/500/700screen.



1	Start button	Single tap to display the Start menu
2	Active application	Display the latest application running
3	Left	Single tap to see the hidden icon on the left
4	Direct Connection	Double tap to execute the direct network status dialog
5	WI-FI Connection	Double tap to execute the WI-FI network setting
6	Keypad Input Method	Single press on the 'ALPHA' to change mode of input by keypad
7	Bluetooth Network	Single tap to execute Bluetooth network setting
8	Power icon	Single tap to display the power status on your HRT300/500/700
9	Right	Single tap to see the hidden icon on the left
10	Time	Single tap to display the time, date and time zone menu
11	Software Input Panel (SIP)	Single tap to display or hide the Keypad
12	Application switching	Single tap to display all the active application

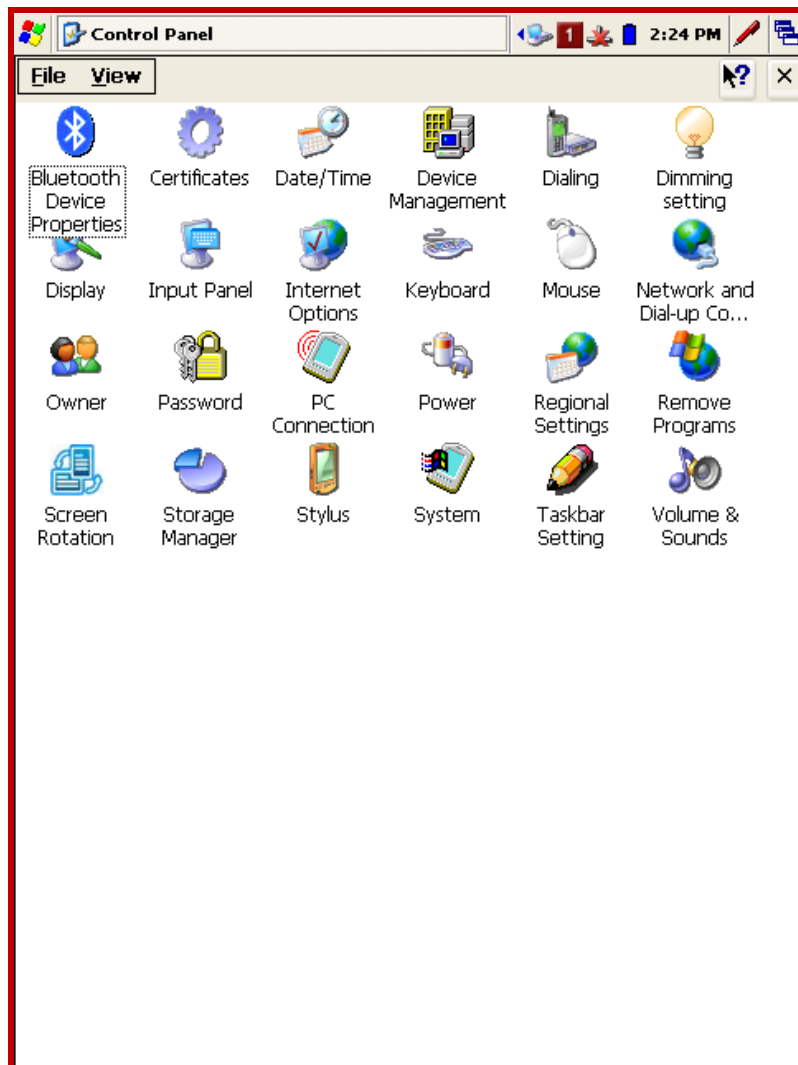
NOTE:

- An internal battery icon appears in the status icon. See Taskbar Item for more information about icons.
- Messages also appear on the screen to warn you when the battery power is critically low.

You can check the current battery level at any time by tapping **Start -> Settings -> Control Panel -> Power** to display Power Properties.

Customizing your HRT 300

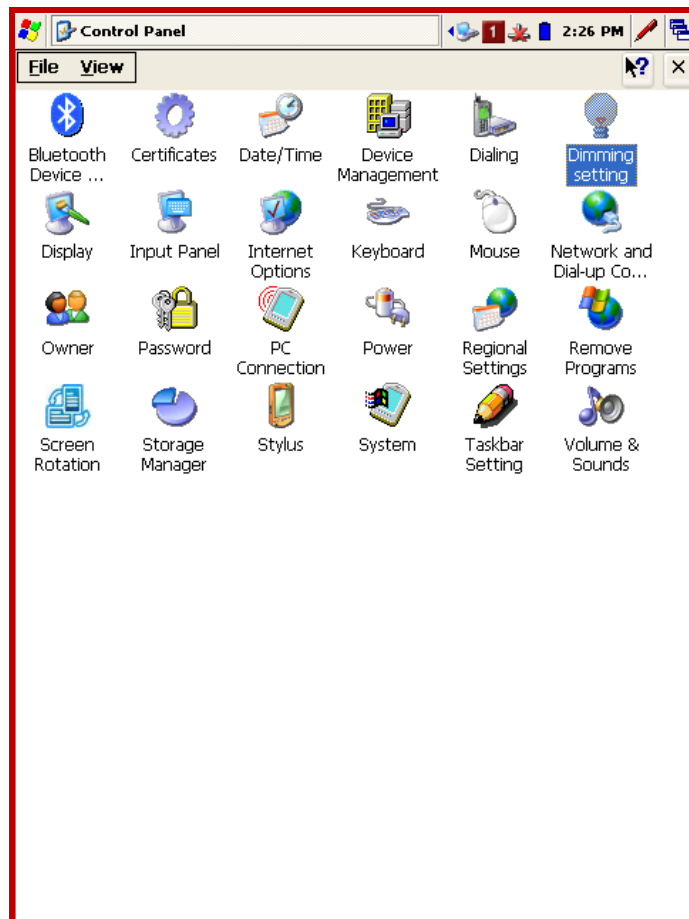
You can customize your setting of your HRT300/500/700 to suit your particular needs. E.g. Setting password, so that nobody can use your handheld or change the background display and etc..



Tap on **Start -> Settings -> Control Panel**, as shown on the previous page. In the menu, it contains icon showing different settings that can be customized.


LCD Brightness Control

The unit can be powered by either battery or external power. Users may change the brightness of the LCD backlight through the backlight control panel applet according to the power mode.




Adjusting Display Brightness

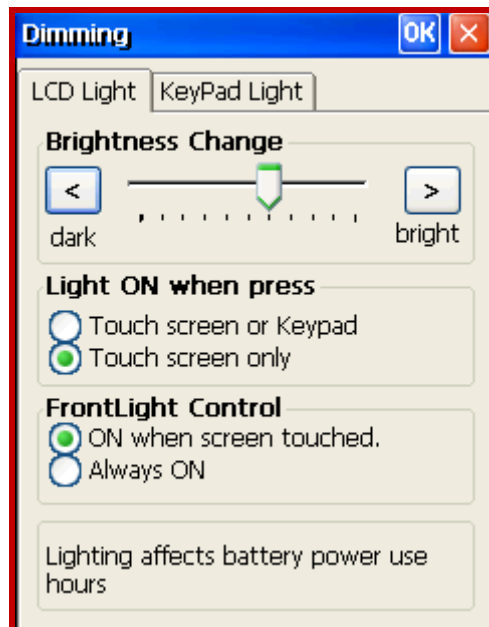
Use the following operations to adjust display brightness to make it easier to read.

Tap  and click **Settings** and choose **Control Panel**. On the **Control Panel**, tap **Dimming Setting**. A screen box will appear. Make sure it is on the **LCD Light** tab. Tap the **dark** or **bright** tab to control the brightness of the screen.

Adjust How the Screen Light can be Turned On


Tap  and click **Settings** and choose **Control Panel**. On the **Control Panel**, tap **Dimming Setting**. Select the **LCD Light** tab. Below the Brightness Change option, there is two more option for screen light setting.

Select **Touch screen or Keypad** in order to turn on the light of the LCD by touching either the touch screen or keypad, or select **Touch screen only** to turn on the light of the LCD by touching the screen only. On the option below, choosing **ON when screen touched** is to let the light to be off after certain time and turn on when the device is touched while choosing **Always ON** is to let the light never off until the device is suspended.




Keypad Light Control


Adjust Light Emitting Duration for Keypad

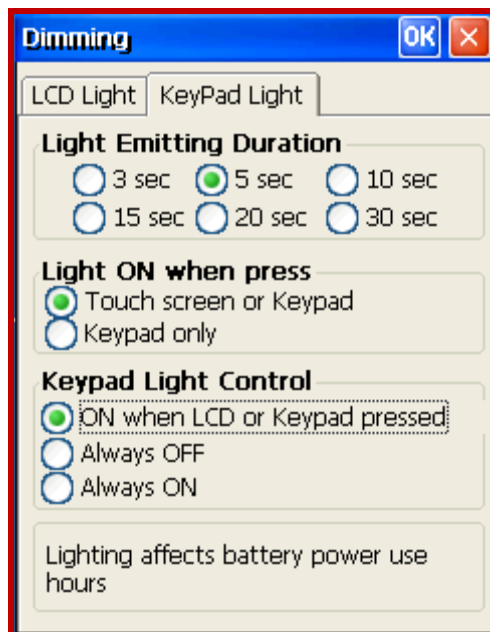
Tap  and click **Settings** and choose **Control Panel**. On the **Control Panel**, tap **Dimming Setting**. Select the **KeyPad Light** tab. Select duration from 3 seconds to 30 seconds, as after that selected duration, the keypad light will be off.

Adjust How the Keypad Light will be Turned On

Tap  and click **Settings** and choose **Control Panel**. On the **Control Panel**, tap **Dimming Setting**. Make sure the **KeyPad Light** tab is selected. Select **Touch Screen or Keypad** for turning on the light of keypad by touching either the screen or the keypad or select **Keypad only** to turn on the light of keypad by touching on the keypad itself.

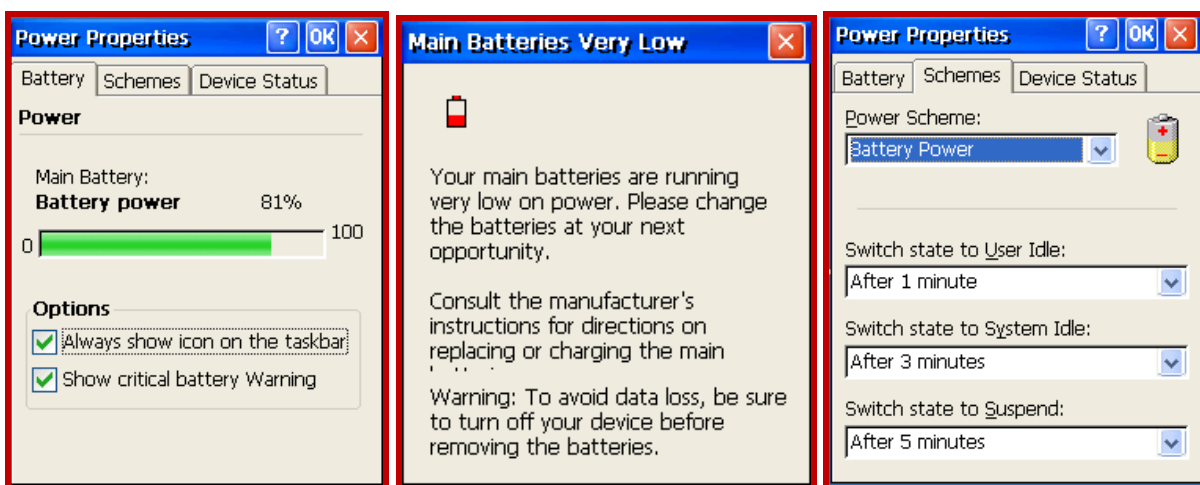
Adjust the Keypad Light Control

Tap  and click **Settings** and choose **Control Panel**. On the **Control Panel**, tap **Dimming Setting**. Make sure the **KeyPad Light** tab is selected. Select **ON when LCD or Keypad pressed** to enable the previous option. Select **Always OFF**, the keypad light will be turned off the entire time else select **Always ON**, the keypad light will be turned on entire time until the device is suspended.



Power

User may check the power status of the main and backup battery by clicking on the power icon. In the power properties menu, for the **Battery** tab, user may check on the option to **Always show icon on the taskbar**. Another option that user may check on is to **Show critical battery Warning**, which means a window will be popped out when the device is low battery.

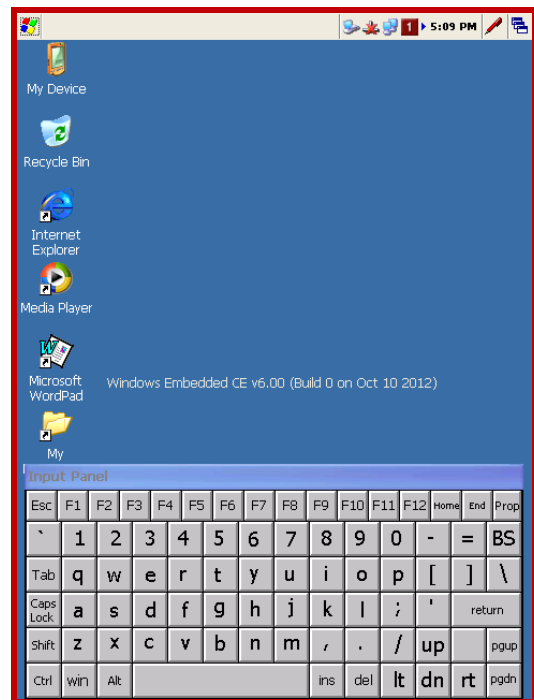
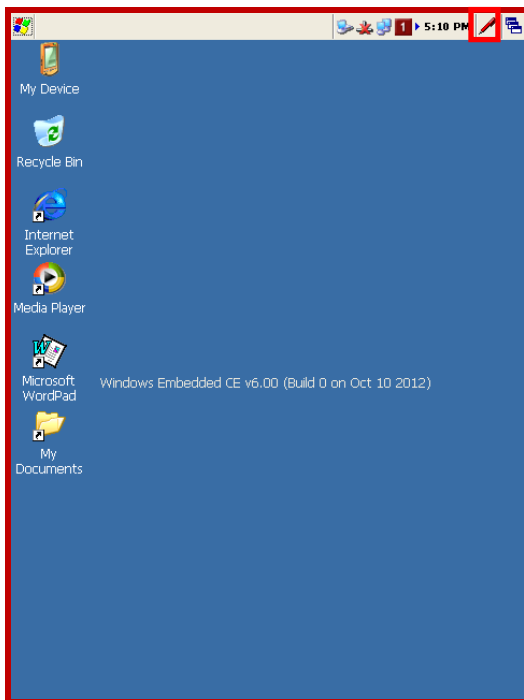


On the **Schemes** tab, there are three options given to the user, duration for switch state to **User Idle**, **System Idle** and **Suspend**.

The schemes allow the user to switch to idle mode when it is not used after a while. This is to save the power consumption. User may select their preference duration for the device, from **After 1 minute** to **Never**.

Software Input Panel (SIP)

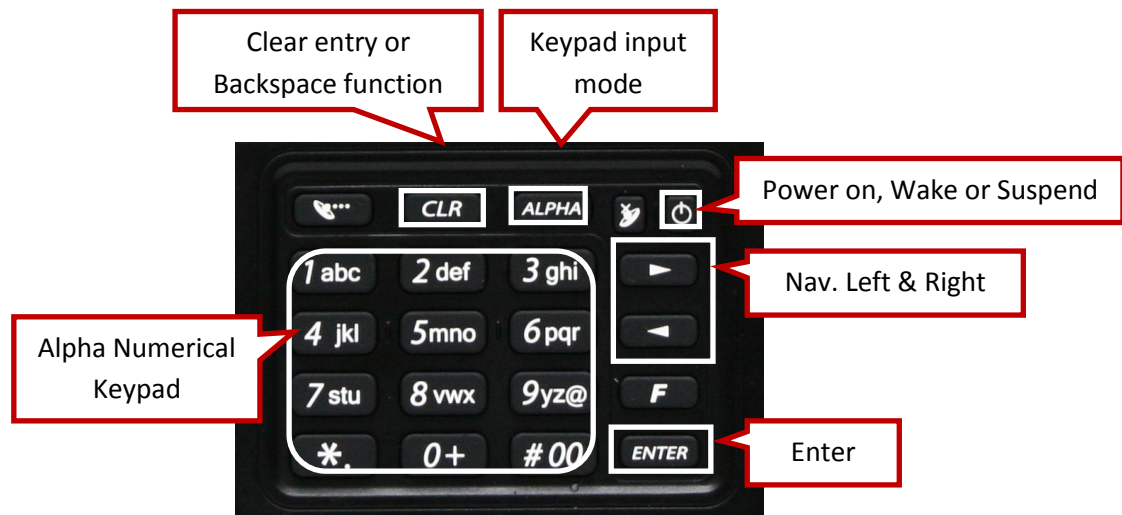
On the taskbar of the HRT300/500/700, tap on the SIP icon. The software input panel will be shown at the bottom of the screen. Tap on the SIP icon again in order to hide the software input panel.



Keypad

Learning to use your keypad is easy. This section will describe the basic concept of using the keypad in writing a message or executing a task like increasing volume.

Controls and Interfaces

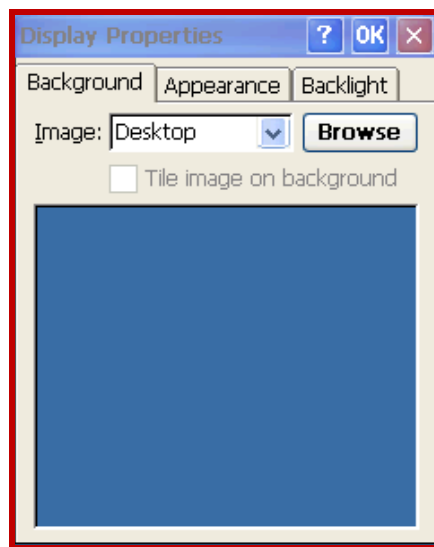


- Nav. Left & Right**
 Press to go to the left or right. Selecting the left or the right item / icon.
- Enter button**
 Pressing it will perform enter function or skip to the next line when writing.
- Power button**
 Press once to turn on / suspend the device. User may wake up the device by pressing it too
- CLR**
 This button allows user to clear entry or use as backspace function.
- Alpha numerical keypad**
 It will act as numerical keypad when toggle function is OFF. Once ON, you can key in any character just by pressing and holding on the button until the character appears.
- Alpha button**
 Press it to change the mode of entering characters by keypad. Sequences of the modes are numerical characters, lower-case alphabets then upper-case alphabets.

Display

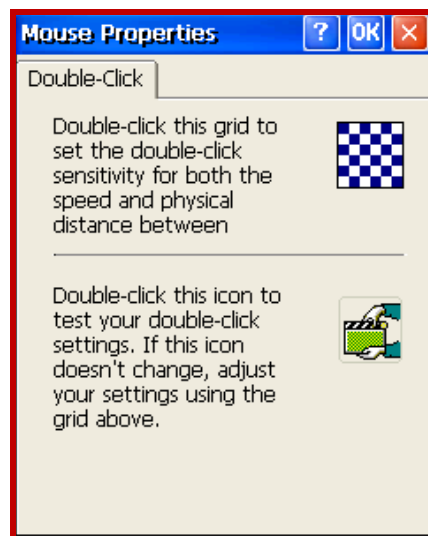
The resolution for the device is 640*480. User can customize the screen display by changing the picture on the Display Properties.

Or user may insert new picture just by transferring it from any personal computer. User may select the **Display Properties** by holding the pointer on the desktop, and then select **Properties** or go to **Start -> Settings -> Control Panel -> Display Properties**. User can tile desired image on the display property.



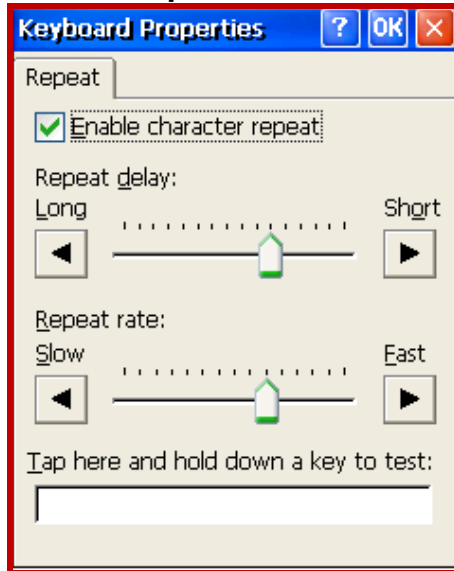
Mouse

On the **Mouse** Menu, user can set and test the sensitivity and speed of double clicking.



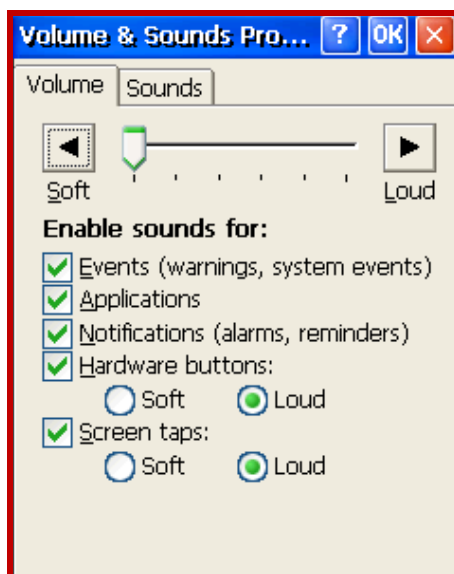
Keyboard

In the Keyboard Menu, you can set two things: repeat delay and repeat rate and an option to check on whether to **Enable character repeat** or not.



Audio Volume

When you choose the **Volume and Sound** properties, on the first page you can set the volume of the speaker and enable sounds for certain warning or applications. On the **Volume** tab, user can set the volume of the sound. When you click on Sound page, user can customize the window events' sound.



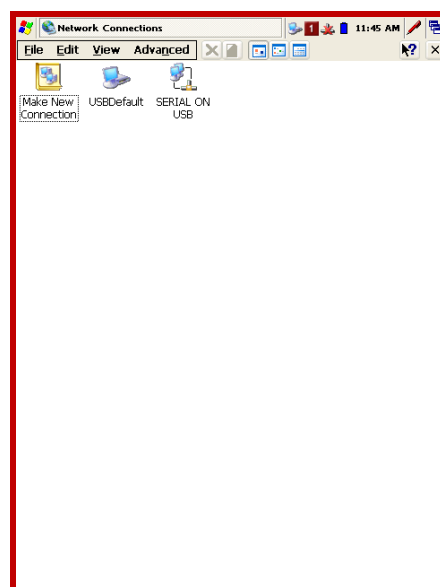
Stylus Property

In this **Stylus Properties**, user can recalibrate the sensitivity of the stylus as well as checking on the mouse double-tap setting.



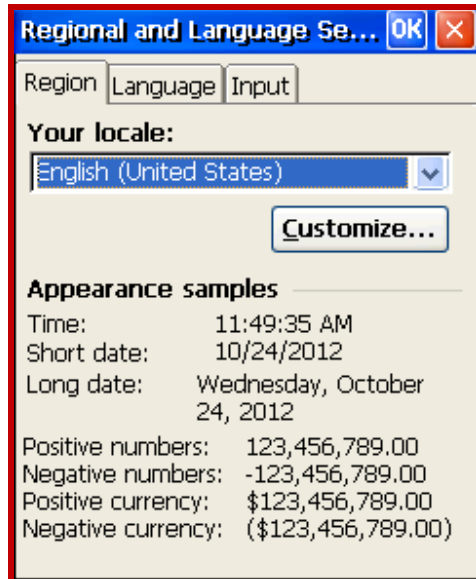
Network and Dial-Up Connection

When tapping on the network and dial-up connection, a default connection will be created which is "USB ActiveSync" (Please refer to 3: Microsoft ActiveSync for functionality), besides, user can also create "IrDA Connection" or "VPN Connection" (Please refer to the [products' manuals](#) for details.)



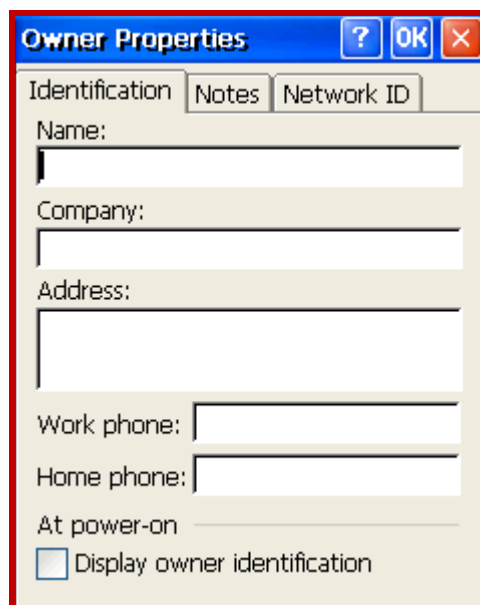
Regional Setting

On the regional setting, user can set your local, language, number, current time and date accordingly.



Owner

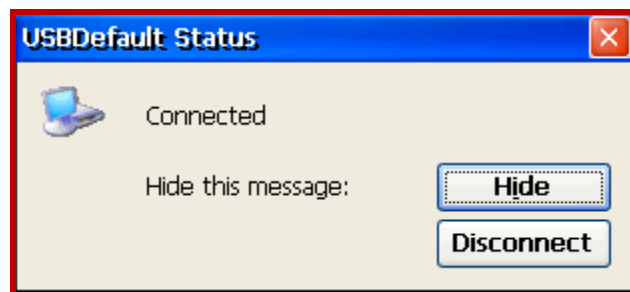
On the owner properties, user could insert their own personal information and network ID. This depends on user's preferences.



PC Connection

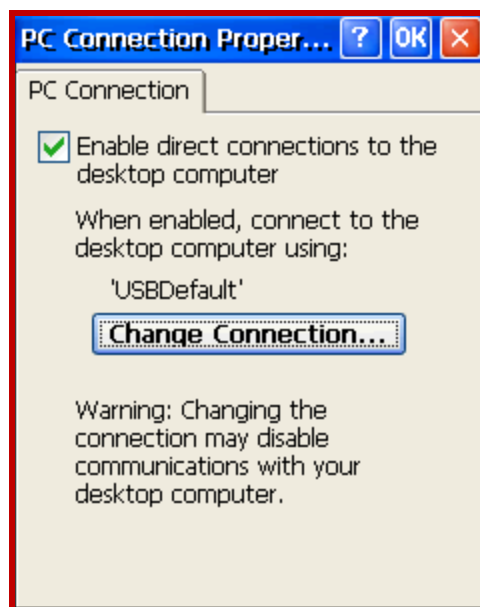
PC connection is to enable the unit to directly communicate with personal computer or other communication devices. The default is set to USB ActiveSync. However, if there is more than one connection being created on the "Network and Dial-Up Connection", user need to change the connection setting before any of the communication devices can be linked, e.g. IrDA. To check the status of PC connection, user can go to

Start -> Settings -> Control Panel -> Network and Dial-up Connection -> USB Default.



For the setting, user can go to

Start -> Settings -> Control Panel -> PC Connection.



Storage Properties

Go to **Start -> Settings -> Control Panel -> Storage Manager**. In the storage properties, user can manage the storage by formatting it, dismounting it or create new partition on it.



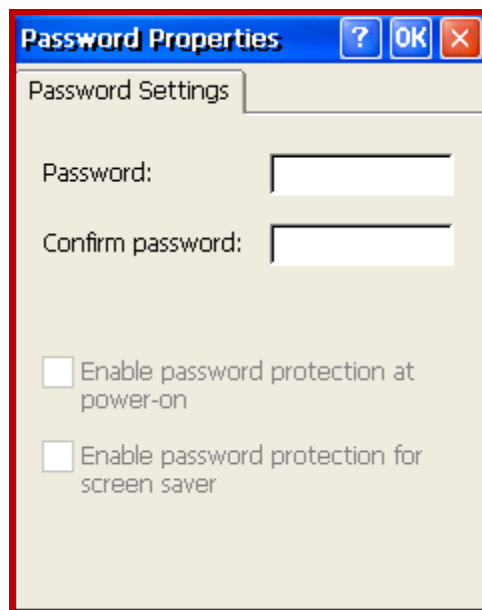
System Property

In the system property, it will show the user the system information, device name and copyrights.



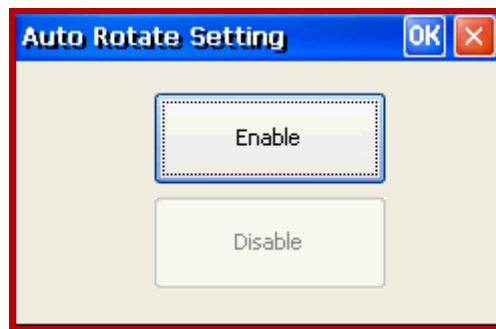
Password

User can set the password to maintain privacy or prevent people from reading the HRT300/500/700.



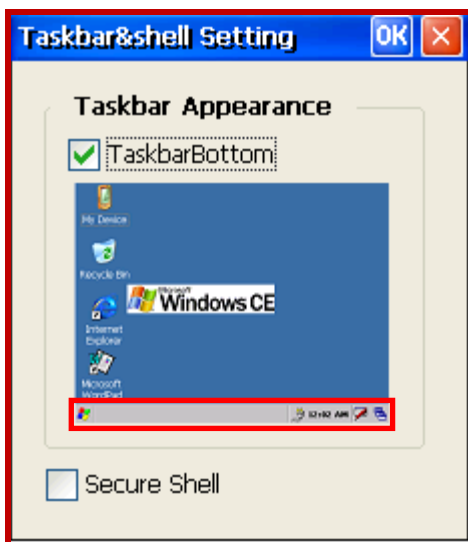
Screen Rotation

This feature allows user to rotate the screen display. It is useful for viewing landscape picture.



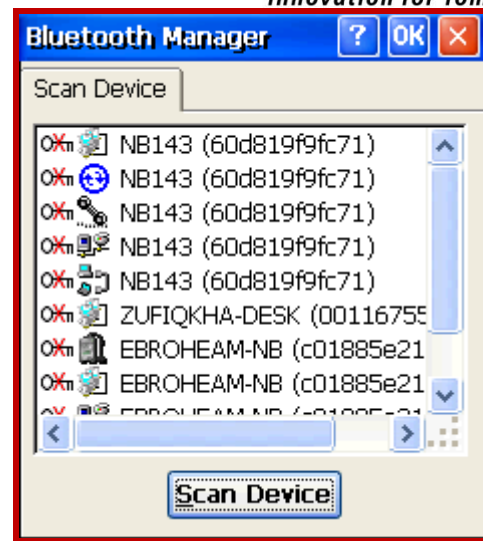
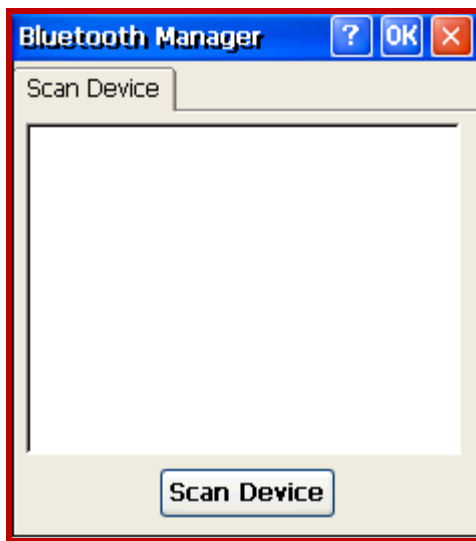
Taskbar & Secure Shell Setting

Allow user to set the taskbar location and Secure Shell feature. Secure Shell enables user to control accessibility of Control Panel. The default password is "123456".



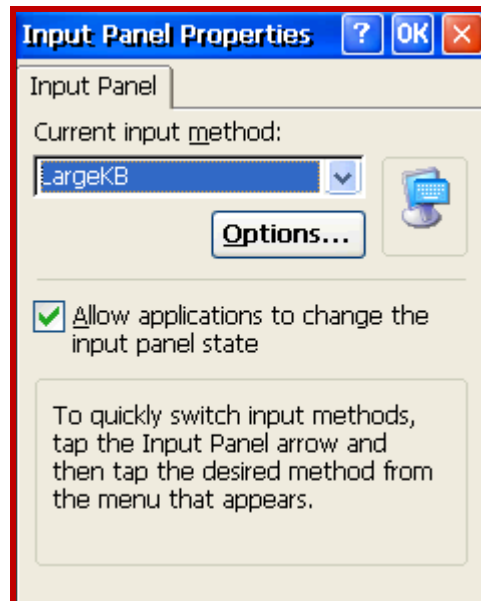
Bluetooth Device properties

Allow user to scan and pair with connecting Bluetooth devices. The HRT300 Bluetooth feature must be turn on for it to scan. For turning on the Bluetooth, please refer to the manual below.



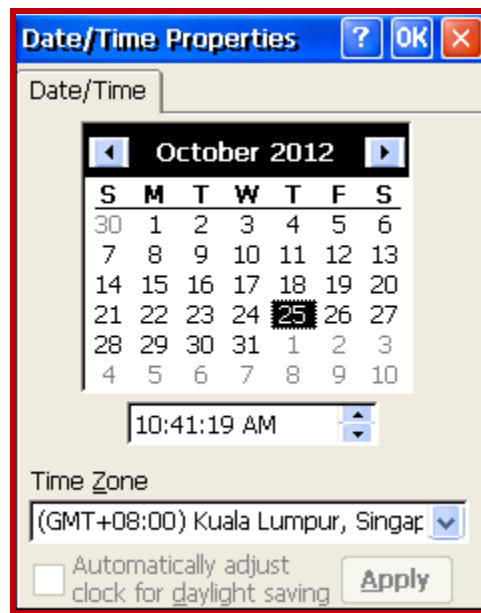
Input Panel Selection

Allow user to change current input panel state: Large KB.
Single tap on the SIP at the taskbar will activate the input panel selection.



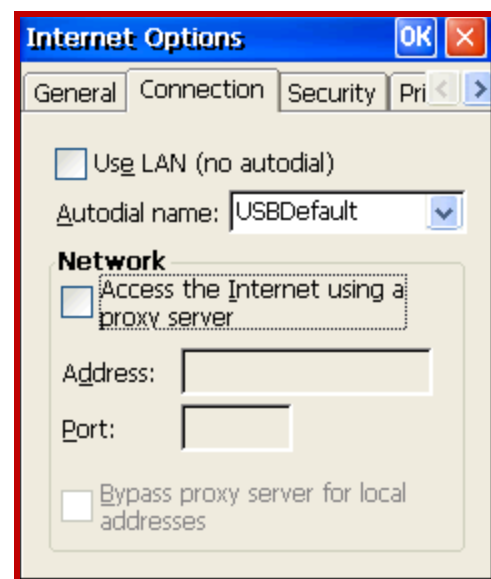
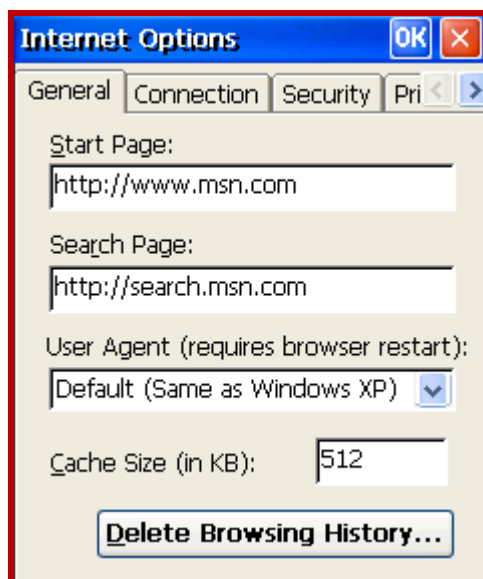
Date & Time Setting

Allow user to configure the date, time and time zone. It also comes with the daylight saving features.



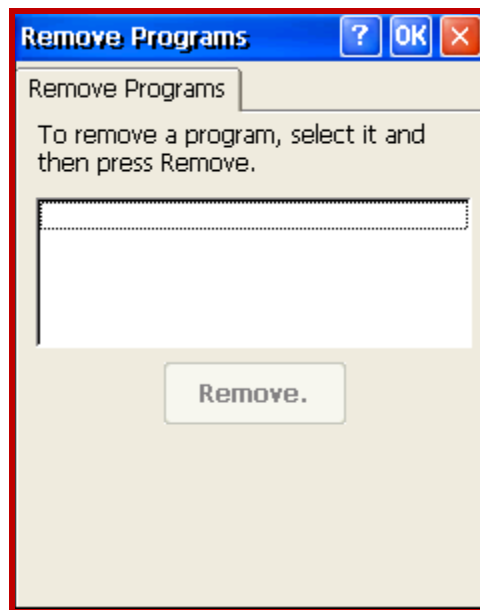
Internet Options

Allow user to configure the network connection setting and the default homepage.



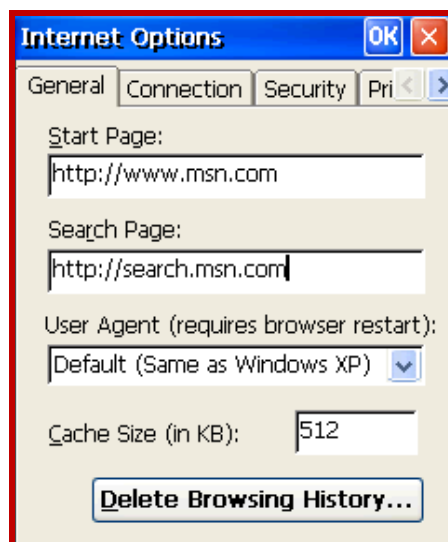
Remove Programs

Allow user to remove installed programs systematically.



Internet Explorer

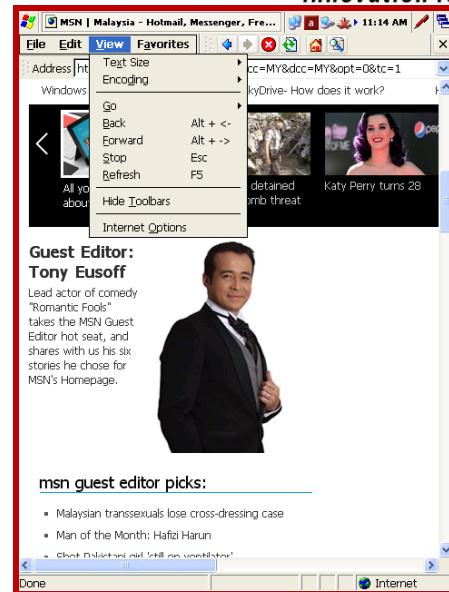
Internet Explorer makes it easier to get the most from the World Wide Web, whether you are searching for new information or browsing through your favorite Web sites.



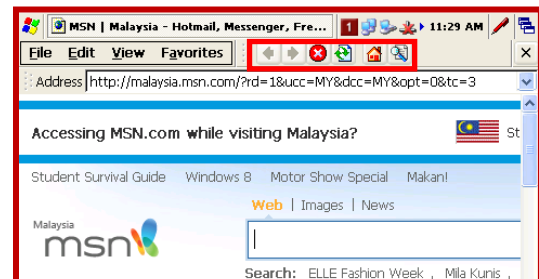
In the control panel menu, under the internet option, user may customize the appearance of the browser when the program is launched. User may also customize other options relating to connection, security and advanced.



The start page of Internet Explorer.



The View menu user has the option of limiting the taskbar to be shown and font size.



User could also go to a webpage, by typing the internet address – for example, www.iris.com.my in the address bar and then click the **Go** button. The **Back** and **Forward** buttons will enable user to return to the previous page or view the next page.

The **stop** button will enable user to stop viewing a page when the webpage is taking too long to open. When receiving a message that a web page cannot be displayed or to make sure you have the latest version of the page, click the **refresh** button.

On the Favorite menu, user may store and organize webpages that are used frequently by adding the shortcut in the Favorite list. User may also synchronize the list of favorite link in

HRT300/500/700 with another desktop computer where changes can be made to either one.
For more information on synchronization, see Active Sync Help on desktop computer.

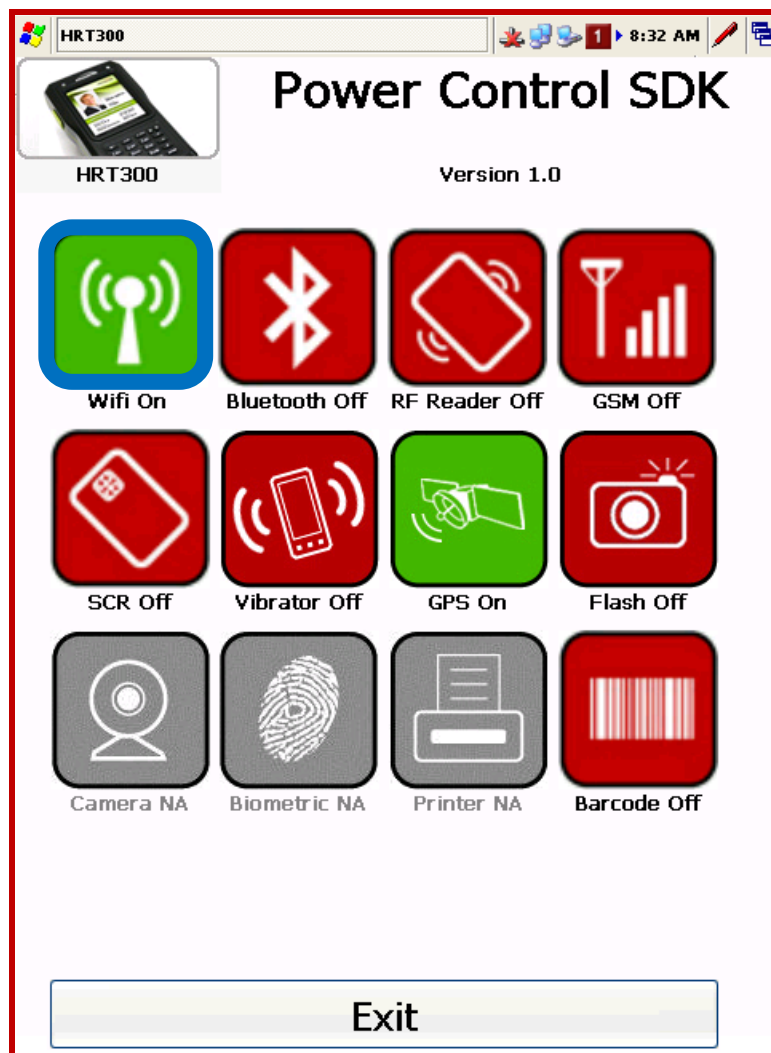
Features

Getting Connected

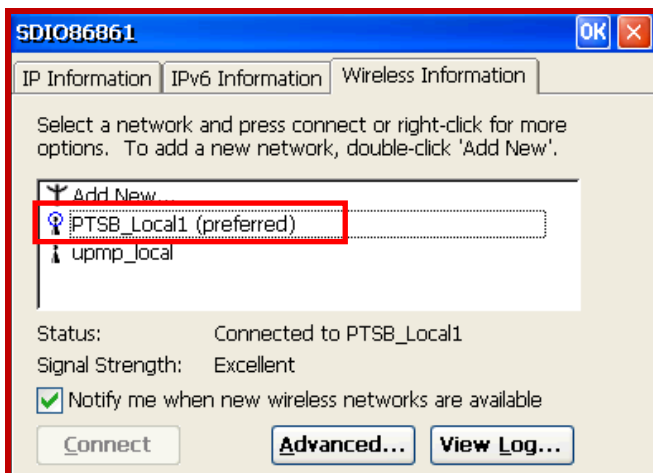
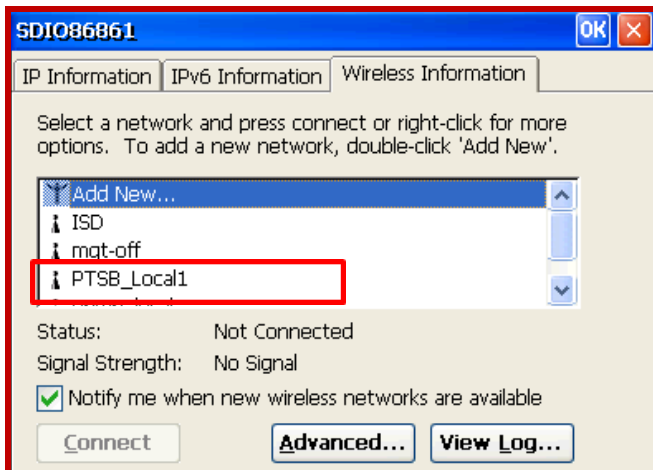
Wireless LAN (Wi-Fi) Usage

HRT300 has built in wireless LAN which enable user to access Internet by accessing available wireless provided at public areas, company or home. To access this feature, first turn it ON by following the instructions below.

Go to Power Control, press once on the icon to turn on or turn off the Wireless LAN function. If the icon is red, then it is on the off status, or else if the icon is green, it is on the on status.



The network icon will popped up on the shell taskbar. Double tap on the icon to configure the WiFi network properties. On the **Wireless Information** tab, check on the **Notify me when new wireless networks are available**. Select the preferable network, press **Connect** and a **Wireless Network Properties** window will be popped out. Enter the Network key if the network authentication is enable, else press OK.



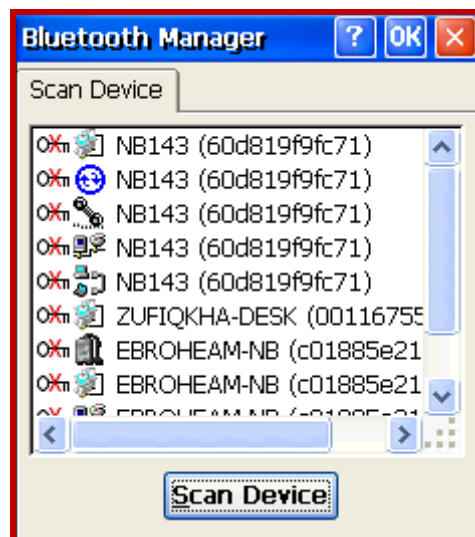
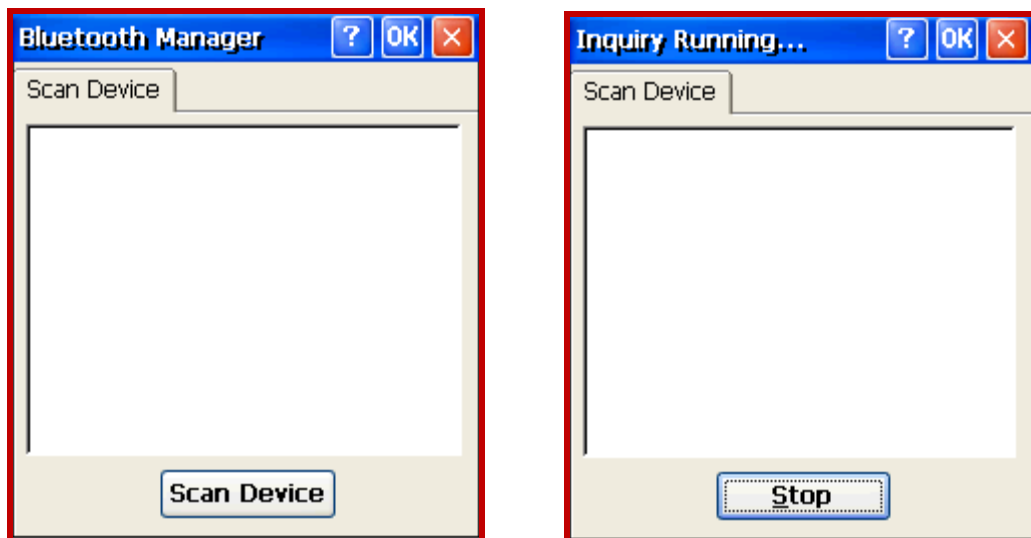
The icon before the Network name will be changed; it shows that the device is connected to the network. User can check on the status and the signal strength.

Bluetooth Usage

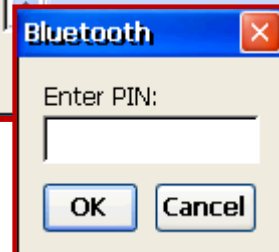
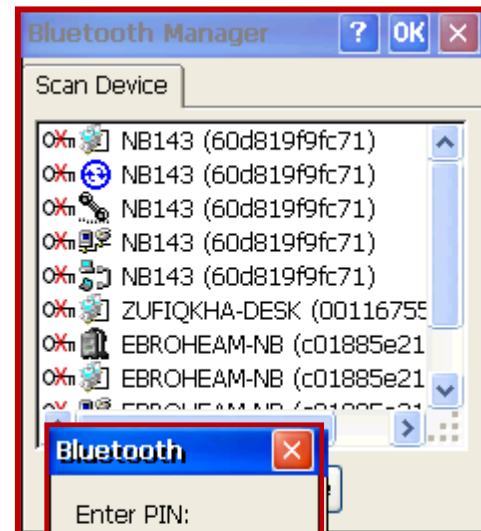
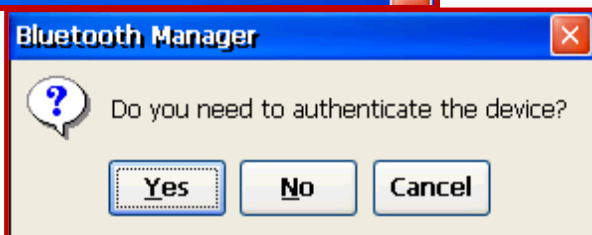
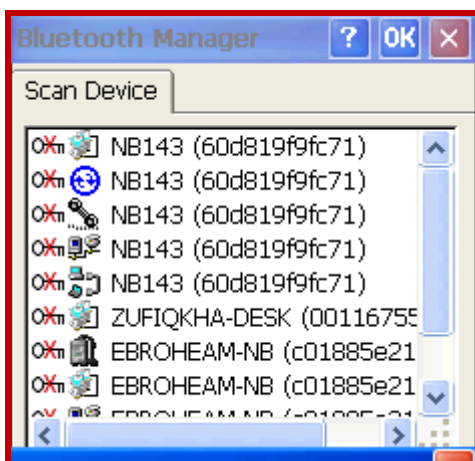
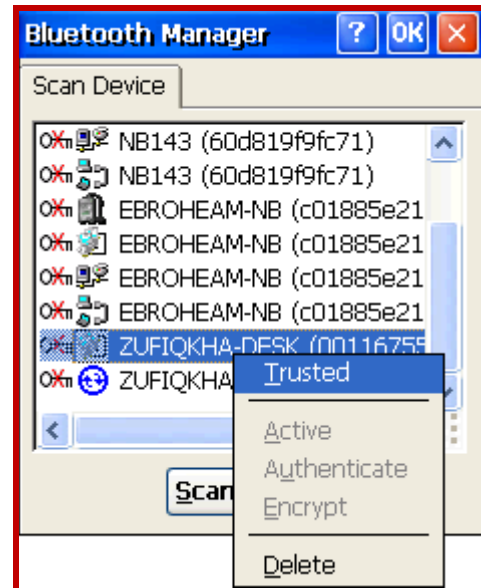
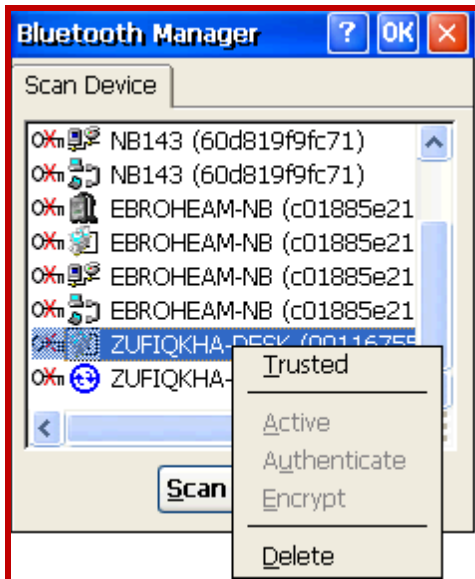
To access Bluetooth function, go to **Power Control** and press once on the Bluetooth icon to activate it. If the icon is green, which means it is turned on, or else if the icon is red, it is turned off or deactivated.

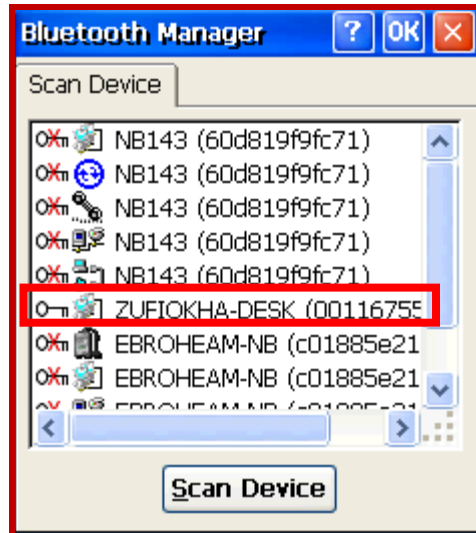


User may scan and pair with other Bluetooth devices such as mobile phones, PCs, laptops and etc.. Go to **Start -> Settings -> Control Panel -> Bluetooth Device Properties**. For pairing another device, user needs to scan for the device first. Make sure the other Bluetooth device is in the coverage.

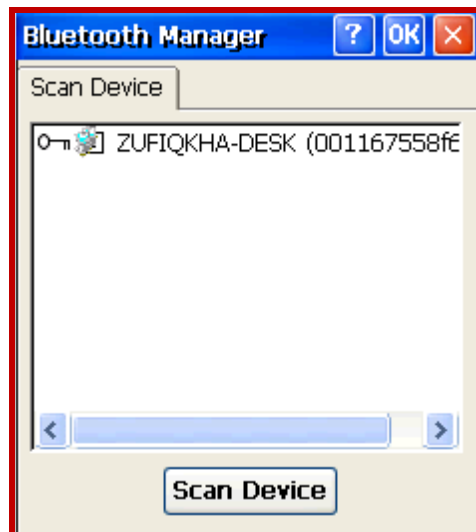


Below is the steps on how to pair up two devices. Select the device that is wanted to be paired. Double-click on that device and choose Trusted. An **Enter Pin** window will be popped up and both devices need the same pin in order to authenticate. After the authentication, user can see changes on the same icon in front of the device.





The icon has changed; it shows that both devices have paired. For the next time the Bluetooth Device properties, the paired device will be shown until it has been unpaired.



Appendix: Troubleshooting Guide

Reset the HRT300 and clear memory

To Reset the HRT300

If your HRT300/500/700 responds slowly, stops responding as expected, or “freezes”, try resetting it. A reset causes the HRT300/500/700 to restart and re-adjust its memory allocation.

Any unsaved data in the open windows may be lost.

- Use the stylus to press the **Reset** button.

To Clear Memory

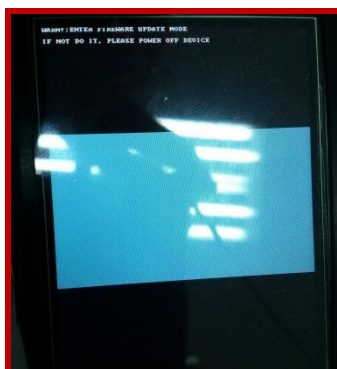
If you forget your HRT300/500/700 password or want to clear all data in your HRT300/500/700 and restore the factory settings, you can run memory initialization.

WARNING

Memory initialization deletes all data and restores the HRT300/500/700 to its default settings. Programs installed at the factory will remain, while data that you have created and programs that you have installed are erased.

Restore to Factory Setting

1. Turn the HRT300/500/700 on.
2. Press and hold the **right** button, and use the stylus to press the **Reset** button. A window as below will be shown on the screen.



3. Press the **left** button to scroll, select **Restore to Factory Setting**.



4. Press the **right** button. Then, select **Yes** by pressing **right** button again.

Low Battery Power

When batteries are running low, you will see a low battery icon in the navigation bar.

Replace or recharge the batteries as soon as possible. When the main battery is discharged, your data will be preserved using the backup battery. Under normal conditions, a fully charged battery can be used for long hours. Here are a few tips to help you get the most from them.

WARNING


If the backup battery is low, you run the risk of losing the data in your HRT300

Use External Power Whenever Possible


Use the AC adapter to plug your HRT300/500/700 into external power whenever possible, especially when:

- Establishing a remote connection (some modems use a lot of power).
- Using the backlight feature of your HRT300 display.
- Connecting to a desktop computer.

Shorten the Auto-Suspend Time

While on battery power mode, your HRT300/500/700 will automatically suspend after a predefined idle period. Maximize the battery's life by shortening the idle time. Tap  and then **Settings**. On the **Control Panel** tab, tap **Power**, and then adjust the **Schemes** setting.


Turn Off the Sounds when Necessary

The HRT300/500/700 produces sounds in response to a number of events, such as warnings, appointments, and screen taps or when you press hardware-button. To optimize battery's life, turn off any unnecessary sound. Tap  and then **Settings**. On the **Control Panel** tab, tap **Volume & Sounds** and clear checked boxes on the **Events**, **Application**, **keyClicks** and **Notification** tabs.

If HRT300/500/700 runs out of Memory

Memory on your HRT300/500/700 is shared between storage memory and program memory. Storage memory is used to store the information you created and programs you installed. Program memory is used to run programs in your HRT300/500/700. The HRT300/500/700 automatically manages the allocation between storage and program memories. However, in some situations, such as when memory is low, the HRT300/500/700 may not be able to automatically adjust the allocation. If you receive a message stating that storage or program memory is unavailable, try the following solutions.

Storage Memory-Secure Digital (SD) Storage Card

1. Move data to a Secure Digital (SD) Storage Card.
2. Tap , **Program** and then **Windows Explorer**. A folder named "**Storage Card**" will appear once the SD memory card is inserted.
3. This folder will disappear automatically once the card is taken out from the slot.
4. Move any file or data into the "**Storage Card**" folder for backup purposes.
5. Files or data save in the SD card can be opened in any other SD card reader or computer.
6. Files copied from computer can also be opened in the HRT300/500/700 unit, as long as it does not exceed the memory of the unit.

Program memory

1. Stop programs that you are not currently using. In most cases, programs automatically stop to free needed memory. However, in some situations, such as when confirmation dialog boxes are waiting for a user's response, the program may not be able to stop automatically. To check the status of your active programs, press **Task Manager**, a window will pop-up showing the active programs. If the program is not working, press **End Task** to close the program.
2. Clear storage memory as described in the preceding section. This will free some storage memory so that it can be allocated to program memory.

3. Reset your HRT300/500/700, as described in "**Reset the HRT300/500/700 and Clear Memory**", earlier in this appendix.

Screen Freezes or Responds Slowly

Reset your HRT300/500/700. See "**Reset the HRT300/500/700 and Clear Memory**", earlier in this appendix.

Screen is Blank


If the HRT300 does not respond when you press the Power button briefly, press and hold the button for a full second. If this does not work:

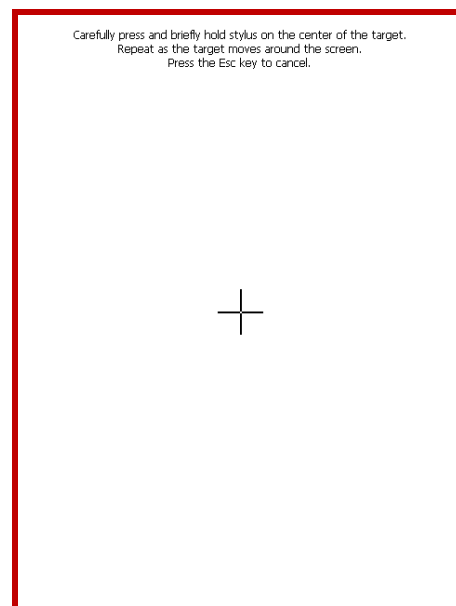
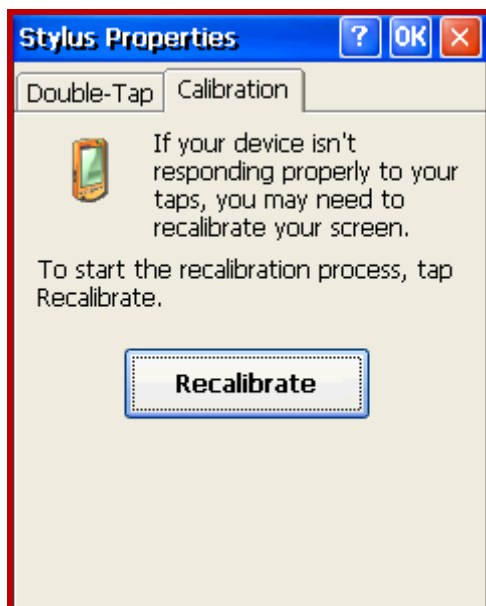
1. Make sure your battery cover is locked and all expansion slots are secured.
2. Plug the HRT300/500/700 into AC power.
3. Change or recharge the main batteries.

Screen is Dark

Prolonged exposure to direct sunlight may cause your HRT300/500/700 screen to be temporarily dim. This is a normal case for LCD screens and it is not permanent.

Inaccurate Response to Stylus Taps

Adjust the touch screen to respond more accurately to screen taps. Tap  and then **Settings**. On the **Control Panel**, tap **Stylus**. In the **Stylus Properties**, choose **Calibration**. Tap "**Calibrate**" and follow the instructions on the screens as shown below:



Slow or no response

Reset the HRT300. See "**Reset the HRT300 and Clear Memory**", earlier in this appendix.

Network connection problems

The following solutions may help if users encounter problems when using a CF Ethernet card for network connections.

- Click "**Start**" then "**Setting**".
- Select Network icon and click it.
- Search from the list for VREETHER1 and choose it.
- Click on the Properties.
- Key in the IP Address, Subnet mask, gateway, DNS & WINS or obtain IP address via DHCP. Choose either one of these depending on the network.
- Click "**OK**" after finished choosing.
- Reset the unit to complete the setting.
- Click on the IE and it will connect to the web.
- If the problem persists, send the unit to manufacturer for **repair service**.

Routine Maintenance

This section provides recommended guidelines for taking care of your HRT300. Following these guidelines helps to ensure the lifespan of your HRT300 and reduces the risk of damage.

Routine Care

To keep your HRT300 in good condition and working properly, follow these guidelines:

- Keep your HRT300 away from excessive moisture and extreme temperature. Do not expose your HRT300 to liquids or precipitation.
- Do not place anything on top of your HRT300 to prevent damage to the screen.
- Store your HRT300 in a protective case when not in use.
- Clean your HRT300 by wiping the screen and the exterior with a soft, damp cloth moistened only with water.



To reduce the risk of electric shock or damage to the internal components, do not spray liquid directly on the screen or allow excess liquid to drip inside your HRT300. Using soap or other cleaning products on the screen may discolor and damage the screen.

- Avoid exposing your HRT300 to direct sunlight or strong ultraviolet light for extended periods of time. Also avoid scratching the surface of the screen and banging it against hard objects.
- Use **only** the HRT300 stylus to prevent **scratches on** the screen.

Battery Guidelines

Follow local regulations regarding the safe disposal of your HRT300/500/700. Your vendor can advise you on local regulations, and/or the existence of any battery disposal programs in the operation.

The HRT300 should not be disposed along with the general household waste. In order to forward them **for** recycling or dispose them properly, please use the public collection system or return them to IRIS, the authorized partners, or their agents.

Travel Guidelines

For safety and convenience when traveling with your HRT300/500/700, follow these guidelines:

- Back up your data before you leave.
- Take a backup copy of your data with you.
- Disconnect all external equipment from your HRT300/500/700.
- Take the AC adapter and new batteries with you.
- Hand-carry your HRT300/500/700 in a protective case. Do not check in with your luggage.
- Beware of potential effects of airport security devices on your HRT300/500/700.



*There are three types of airport security devices: X-ray machines, magnetic detectors (the device you walk through **for security scanning**), and security magnetic wands. You can send your device through airport X-ray machines. However, it is recommended that you do not send your HRT300/500/700 through magnetic detectors or expose it to security magnetic wands.*

- Check with the airline if you plan to use your HRT300 on the plane. In-flight, the use of electronic devices is at the discretion of the airline.

International Travel

Before traveling internationally with your HRT300/500/700, be sure to:

- Check local customs regulations on wireless devices.

Shipping Guidelines

When shipping your HRT300/500/700, follow these guidelines:

- Safeguard your data by making a backup copy.
- If shipping the backup copy, be sure that the medium (diskette, tape, or SD card) is not exposed to electrical or magnetic impulses while stored or in transit.
- Turn off your HRT300/500/700 and disconnect all external devices.
- Pack your HRT300/500/700 and all external devices (such as the cradle, cords, and cables) in their original packing boxes or in similar packaging with sufficient packing material to protect them.

FCC STATEMENT :

This device complies with Part 15 of the FCC Rules. Operation is subject to the following two conditions:

- (1) This device may not cause harmful interference, and
- (2) This device must accept any interference received, including interference that may cause undesired operation.

Warning: Changes or modifications not expressly approved by the party responsible for compliance could void the user's authority to operate the equipment.

NOTE: This equipment has been tested and found to comply with the limits for a Class B digital device, pursuant to Part 15 of the FCC Rules. These limits are designed to provide reasonable protection against harmful interference in a residential installation.

This equipment generates uses and can radiate radio frequency energy and, if not installed and used in accordance with the instructions, may cause harmful interference to radio communications. However, there is no guarantee that interference will not occur in a particular installation. If this equipment does cause harmful interference to radio or television reception, which can be determined by turning the equipment off and on, the user is encouraged to try to correct the interference by one or more of the following measures:

- Reorient or relocate the receiving antenna.

- Increase the separation between the equipment and receiver.

- Connect the equipment into an outlet on a circuit different from that to which the receiver is connected.

- Consult the dealer or an experienced radio/TV technician for help.