

AccBridge™ Getting started guide



July, 2013 Edition Rev.0. All rights reserved.

Trademark Information

AccBridge™ and Sensal™, are registered trademarks of SmartAcc Technology

SmartAcc Technology
13, rue des Coquelicots
31830 Plaisance du Touch
France

No part of this document may be reproduced or transmitted in any form or by any means, electronic or mechanical, for any purpose, without the express written permission of SmartAcc Technology. SmartAcc Technology is not responsible for printing or clerical errors. Information in this document is subject to change without notice.

Welcome

Thank you for purchasing a SmartAcc Technology product. The purpose of the guide is to allow you to quickly use the AccBridge™ products while providing all the relevant information needed for a first installation.

Contents:

1 Product Overview

2 Getting started

3 Product Specification

4 FCC part

1 Product Overview

AccBridge™ accessories link the user to a wide variety of sensor based applications in areas like Automotive, Home Automation, Alarm System, Health Care monitoring or Industrial and Commercial Automation. Sensor data are sent wirelessly to the AccBridge™ device and displayed thanks to IOS applications downloaded on the Apple Store. The same product is used for several application types, optimizing the overall system cost.

When connected to an iPhone,iPad or an iPodTouch ,the AccBridge™ operates in association with the Sensal™ product and the EarlyWarn application downloaded on the Apple Store.

See www.smartacctest.com for additional information.

2 Getting started

- Step 1 : Connect the AccBridge™ to your iPhone,iPad or an iPodTouch



Figure 1: AccBridge™ connected

- Step 2 : Select and Launch the IOS application

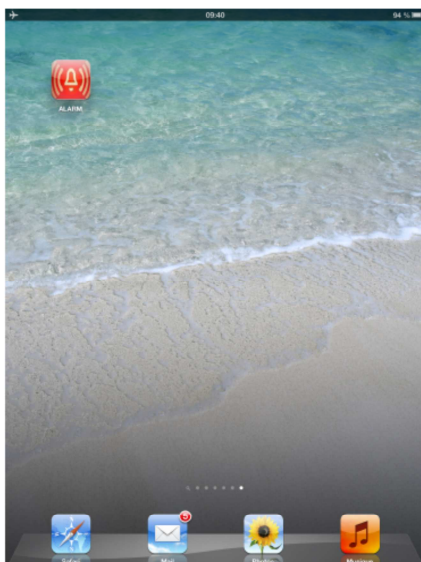


Figure 2: Application example

- Step 3 : Operate the IOS application

The application is now ready to receive wirelessly information from the sensor network.

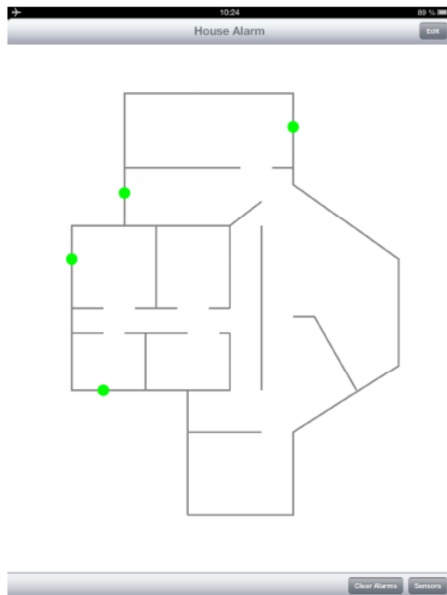


Figure 3: Example of the EarlyWarn application showing No Alarm

- Step 4 : Product testing

With the AccBridge™ product connected to the Apple device and the IOS EarlyWarn application running , an alarm can be triggered when the Sensal™ product is shocked, tilt or moved.

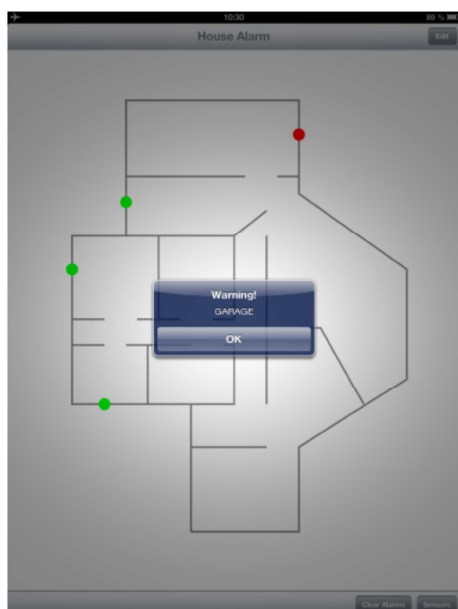


Figure 4: Example of the EarlyWarn application showing an Alarm has occurred

Please refer to EarlyWarn User Guide available Online at the AppStore to proceed to the full installation.

3 Product specification

Key Specifications	
Frequency	315MHz
Range	30 m Min. OTA (Over The Air) with Sensal™ products
Power supply	Provided by the Apple products

4 FCC part

This device complies with part 15 of the FCC Rules. Operation is subject to the following two conditions: (1) This device may not cause harmful interference, and (2) this device must accept any interference received, including interference that may cause undesired operation."

"NOTE: This equipment has been tested and found to comply with the limits for a Class B digital device, pursuant to part 15 of the FCC Rules. These limits are designed to provide reasonable protection against harmful interference in a residential installation. This equipment generates uses and can radiate radio frequency energy and, if not installed and used in accordance with the instruction, may cause harmful interference to radio communications. However, there is no guarantee that interference will not occur in a particular installation. If this equipment does cause harmful interference to radio or television reception which can be determined by turning the equipment off and on, the user is encouraged to try to correct interference by one or more of the following measures:

- Reorient or relocate the receiving antenna.*
- Increase the separation between the equipment and receiver.*
- Connect the equipment into an outlet on circuit different from that to which the receiver is connected.*
- Consult the dealer or an experienced radio/TV technician for help.*

Caution :

Changes or modifications not expressly approved by the party responsible for compliance could void the user's authority to operate the equipment.