



# User Manual

## Wireless router

**Model No.: TI-150PJ, TI1558K-16M, TI3058K-16M,  
TI1524W-14M, TI3024K-14M**

**Jiangmen TOPDA Electronics Co., Ltd.**

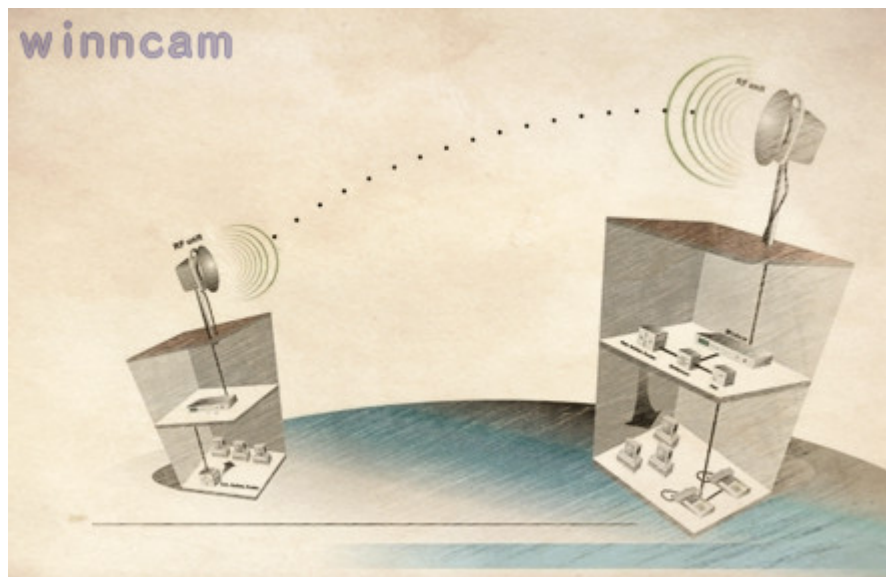


**Product description:**

1. Motherboard voltage design operating voltage 6-24V input, to adapt to different working conditions.
2. Working status lights display (with working lights external ports) to make the device more intuitive and convenient test tone.
3. Enable the board to super and stable performance of the hardware platform.
4. 5.8G broadband broadcast, avoid interference, more stable signal.

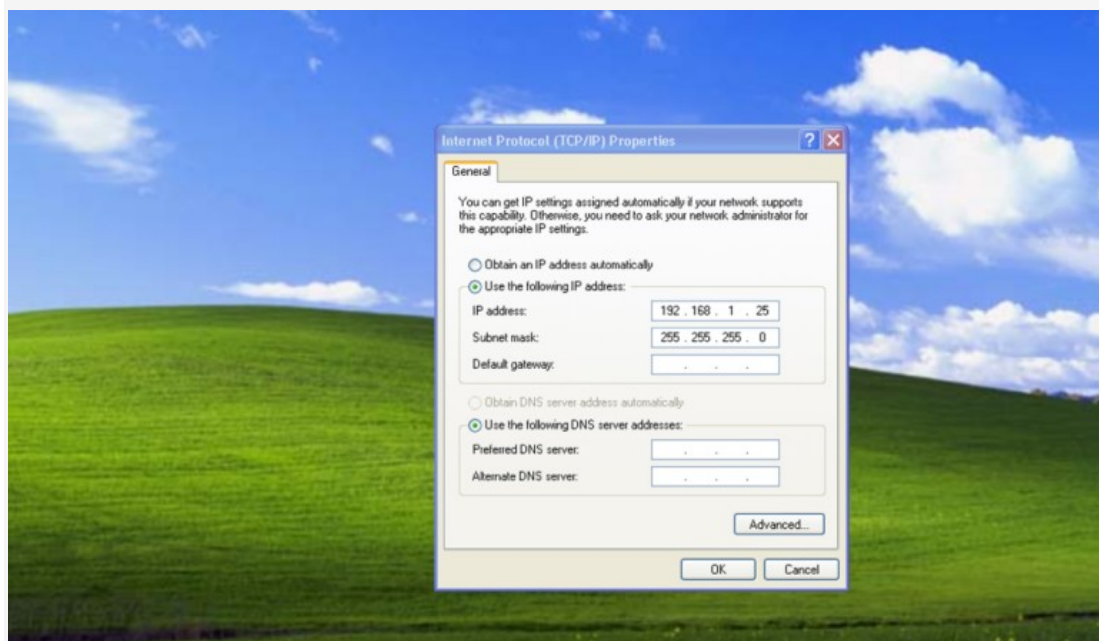
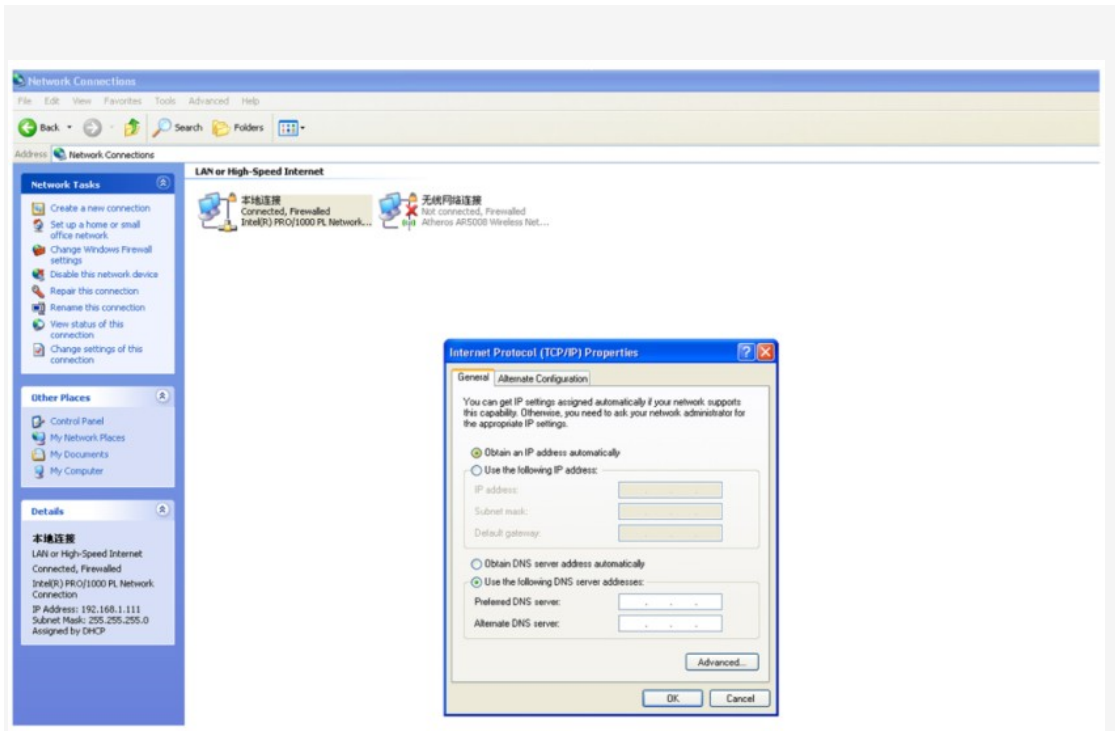
**Product application:**

Wireless router how to use it in the actual set up, and then this recommended as follow:



**1.Change your computer's IP address to a static IP address and in subnet 192.168.1.20 , set the subnet mask is 255.255.255.0. Connect Wireless router with your computer to the same physical network. Enter 192.168.1.20 in your IE, enter user name and password: admin**

(Note: The black firmware is the same as the red one.)



Username:

admin

Password:

\*\*\*\*\*

Login

EXTRA

MAIN

WIRELESS NETWORK ADVANCED SERVICES

SYSTEM

Tools:

#### Status

Device Name:	wifi	AP MAC:	Not Associated
Network Mode:	Bridge	Signal Strength:	-
Wireless Mode:	Station	Noise Floor:	-
SSID:	Wifi	Transmit CCQ:	-
Security:	none	TX/RX Rate:	- / -
Version:	v5.3.3.sdk	AirMax:	-
Uptime:	00:04:32		
Date:	2012-10-26 02:38:29		
Channel/Frequency:	153 / 5765 MHz		
Channel Width:	Auto 20 / 40 MHz		
ACK/Distance:	31 / 0.4 miles (0.6 km)		
TX/RX Chains:	1X1		
WLAN MAC:	00:15:6D:AB:12:23		
LAN MAC:	00:15:6D:BB:12:23		
LAN:	100Mbps-Full		

**2.Open Wireless, you can choose 4 operating modes in Wireless Mode of Basic Wireless Settings.**

### Basic Wireless Settings

Wireless Mode:[?]

Station

Station

Station WDS

Access Point

Access Point WDS

Select...

SSID:

Lock to AP MAC:

Country Code:

United States

IEEE 802.11 Mode:

A/N mixed

Channel Width:[?]

Auto 20/40 MHz

Channel Shifting:[?]

Disabled

Frequency Scan List, MHz:

☐ Enabled

Auto Adjust to EIRP Limit:

☐

Antenna Gain:

16 dBi

Output Power:

20

dBm

Max TX Rate, Mbps:

MCS 7 - 65 [150]

☒ Automatic

### Wireless Security

Security:

none

## 2.1.Configuration

The center bridge Select **Access Point WDS**, remote bridge Select **Station WDS** mode. When **Wireless Mode** was selected to **Access Point WDS**, the page will appear **WDS Peers** menu, you need to fill the MAC address of remote bridge Station WDS here, most to 6 addresses. Station WDS also need to be filled the MAC address of the Access Point WDS equipment. Fill the same **SSID, Channel Width , Frequency** on each wireless device.

Note: as a long-distance transmission, open **Advanced Distance** in **Advanced Wireless Settings**, select the actual transmission distance

## 2.2.Client Configuration

Select the working mode of Station for Remote bridge. There is a Select button behind ESSID in Station , click it and you can search equipments around, select the device you need to connect .

## 3.Security settings

In the page of **Wireless**, select the encryption of wireless router , fill in the password (numbers, letters all be ok), as this picture below:

Wireless Security

Security:

none

none

WEP

WPA

WPA-TKIP

WPA-AES

WPA2

WPA2-TKIP

WPA2-AES

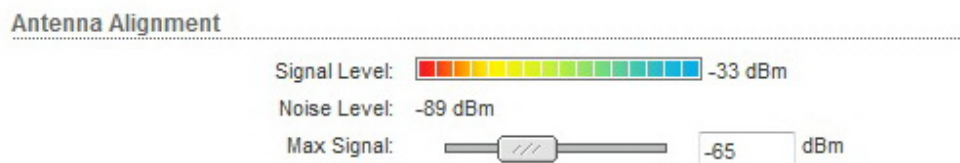
Change

Copyright Networks

## 4、signal display

### 4.1. Signal display

When the wireless router is in "Access Point, Station, Access Point WDS, Station WDS" mode, you can see the signal display state in **Main -> Signal Strength** item. You also can click and choose **Align Antenna** tool in the Tool Options , signal status will be displayed as this picture below:



### 4.2. The client signal display

In Wireless page, work mode is set to **Station** mode, click the **Select** button ,and it will pop up a new page to search wireless AP signals around automatically ,select the wireless AP you need to connect.

**EXTRA MAIN WIRELESS NETWORK ADVANCED SERVICES SYSTEM Tools:**

---

**Basic Wireless Settings**

---

Wireless Mode:[?] Station Select...

SSID: Station WDS

Lock to AP MAC: Access Point

Country Code: United States

IEEE 802.11 Mode: A/N mixed


Channel Width:[?] Auto 20/40 MHz

Channel Shifting:[?] Disabled

Frequency Scan List, MHz: ☐ Enabled

Auto Adjust to EIRP Limit: ☐

Antenna Gain: 16 dBi

Output Power:  20 dBm

Max TX Rate, Mbps: MCS 7 - 65 [150] ☒ Automatic

---

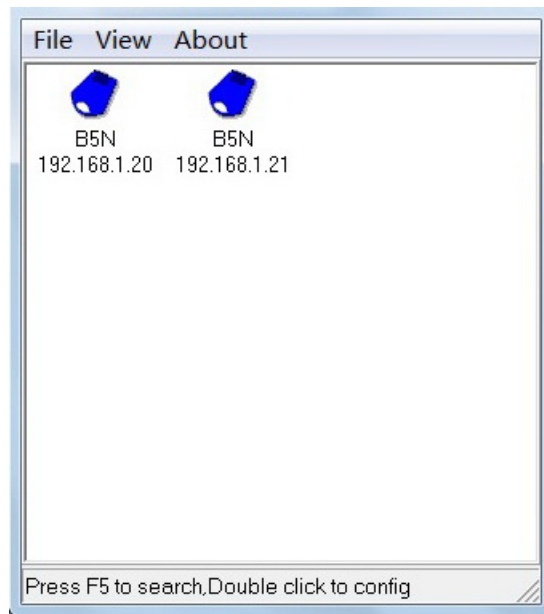
**Wireless Security**

---

Security: none

## 5.IP address search

When you forget the IP address of your Wireless router, you can use 11N IP config Tool software to search it.

**FCC Statement:**

This equipment has been tested and found to comply with the limits for a Class B digital device, pursuant to part 15 of the FCC Rules. These limits are designed to provide reasonable protection against harmful interference in a residential installation. This equipment generates, uses and can radiate radio frequency energy and, if not installed and used in accordance with the instructions, may cause harmful interference to radio communications. However, there is no guarantee that interference will not occur in a particular installation. If this equipment does cause harmful interference to radio or television reception, which can be determined by turning the equipment off and on, the user is encouraged to try to correct the interference by one or more of the following measures:

- Reorient or relocate the receiving antenna.
- Increase the separation between the equipment and receiver.
- Connect the equipment into an outlet on a circuit different from that to which the receiver is connected.
- Consult the dealer or an experienced radio/TV technician for help.

Caution: Any changes or modifications to this device not explicitly approved by manufacturer could void your authority to operate this equipment.

This device complies with part 15 of the FCC Rules. Operation is subject to the following two conditions: (1) This device may not cause harmful interference, and (2) this device must accept any interference received, including interference that may cause undesired operation.

The device has been evaluated to meet general RF exposure requirement. The device can be used in portable exposure condition without restriction.

“To comply with FCC RF exposure compliance requirements, this grant is applicable to only mobile configurations. The antennas used for this transmitter must be installed to provide a separation distance of at least 20 cm from all persons and must not be co-located or operating in conjunction with any other antenna or transmitter.”