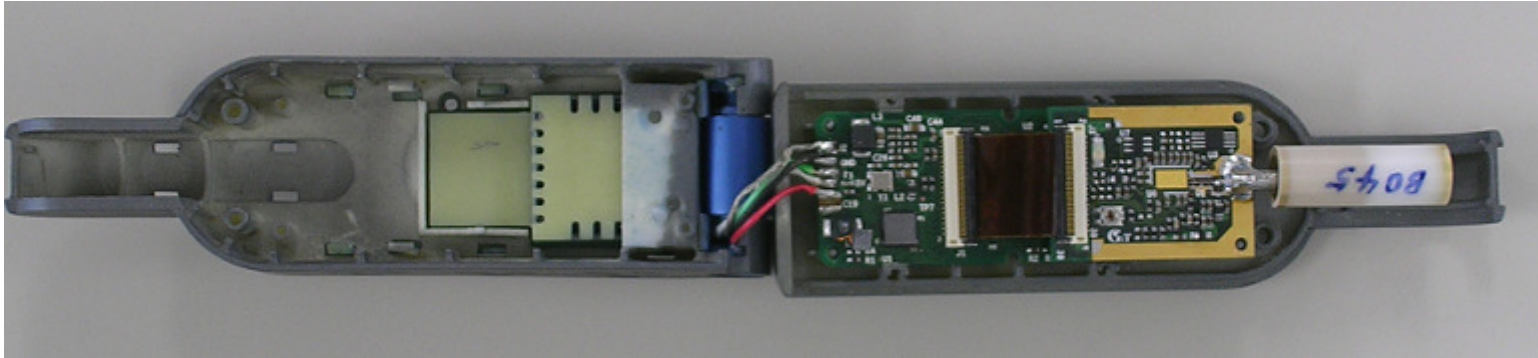
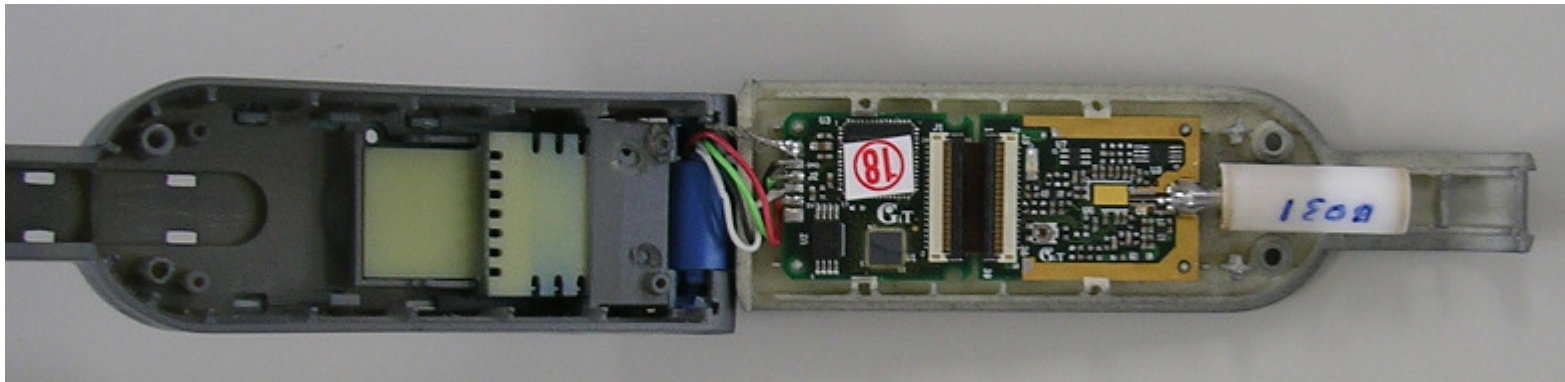


Internal Photos



XiM260BRF

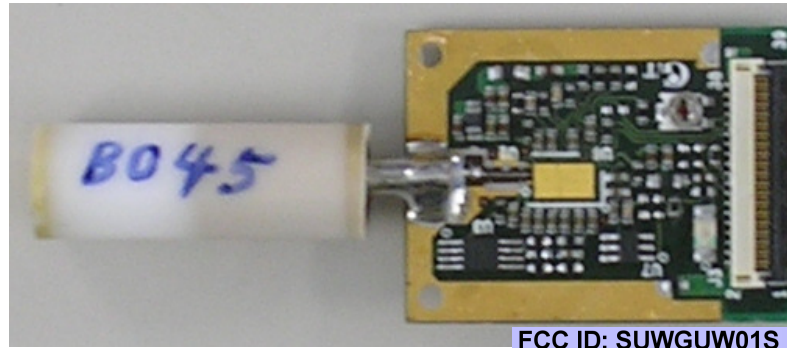


XiM2600CF

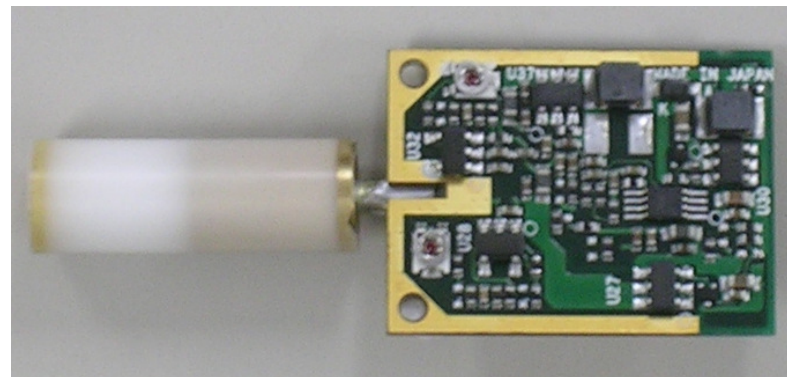
Intentionally metal shield cover is removed in these photos.
Boards are covered by copper as described in OEM installation manual.

Printed circuit board photo

RF board and antenna



Front



Back

Intentionally metal shield cover is removed in these photos.
Boards are covered by copper as described in OEM installation manual.

SUW0012136545

Circuit board is fully shielded.

