

Universal Remote

User Manual

UC100/UC200/UC500

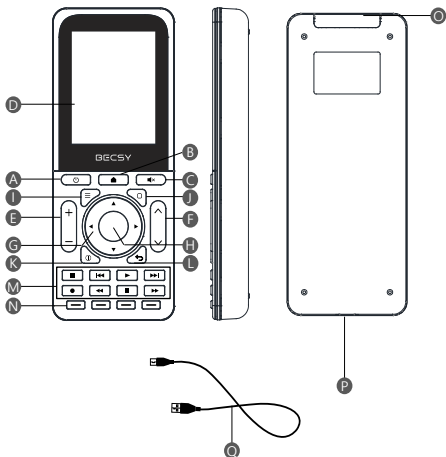


BECSY

• Contents

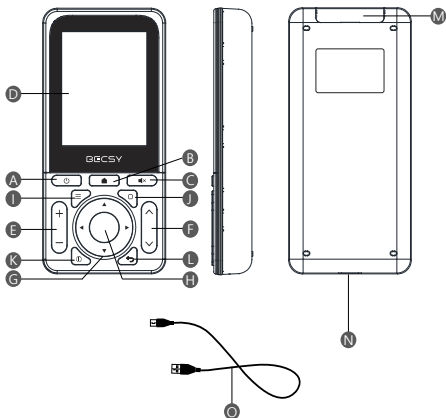
1. Product UC100/UC200/UC500-----	1~3
2. Terminologies-----	4
3. Getting Started with Multi Remote-----	5~6
4. Setting Mode-----	7
5. Adding Database Devices-----	8~10
6. Adding and Using OTT/Bluetooth Devices-----	11~20
7. IR Learning-----	21~23
8. Deleting Devices-----	24
9. Deleting Devices(Bluetooth)-----	25~26
10. Devices Moving-----	27~28
11. Devices Exchange-----	29
12. Changing Devices Names-----	30~31
13. Keys Adding-----	32~33
14. Deleting Keys-----	34~35
15. Move Key-----	36~37
16. Copying Keys-----	38~39
17. Renaming Keys-----	40~41
18. How to create a macro button-----	42~44
19. Preference-----	45~46
© Troubleshooting-----	48~50
■ Specifications-----	51
■ Warranty-----	52

1. Product Composition and Name of Each Part for <UC100>



- | | |
|-------------------|------------------------|
| Ⓐ Power ON/OFF | Ⓘ Menu |
| Ⓑ Display home | Ⓝ Home/Guide |
| Ⓒ Mute | Ⓚ Information |
| Ⓓ LCD Screen | Ⓛ EXIT |
| Ⓔ Volume UP/DOWN | Ⓜ Multi-media Control |
| Ⓕ Channel UP/DOWN | Ⓝ Optional Function |
| Ⓖ Navigator | Ⓞ IR Transceiver |
| Ⓗ Selection | Ⓟ USB Type-C Connector |
| | Ⓠ USB C Cable |

1. Product Composition and Name of Each Part for <UC200>



A Power ON/OFF

B Display home

C Mute

D LCD Screen

E Volume UP/DOWN

F Channel UP/DOWN

G Navigator

H Selection

I Menu

J Home/Guide

K Information

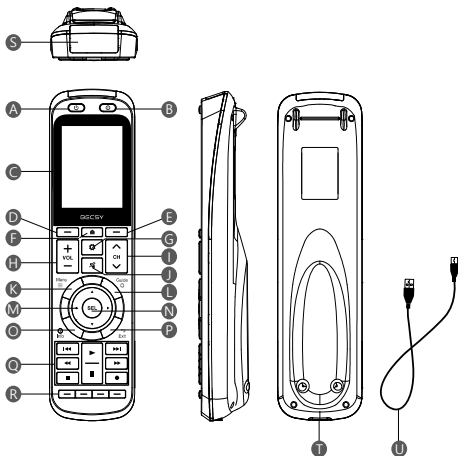
L EXIT

M IR Transceiver

N USB Type-C Connector

O USB C Cable

1. Product Composition and Name of Each Part for <UC500>



- | | | |
|----------------------------------|--------------------------|-------------------------------|
| A Power ON | H Volume UP/DOWN | O Information |
| B OFF/Device power | I Channel UP/DOWN | P EXIT |
| C LCD Screen | J Mute | Q Multi-media Control |
| D Return to previous page | K Menu | R Optional Function |
| E Go to next page | L Home/Guide | S IR Transceiver |
| F Display home position | M Navigator | T USB Type-C Connector |
| G Settings | N Selection | U USB C Cable |

2. Terminologies

▣ Devices

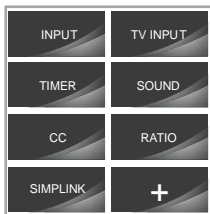
Marked the products (TV, Audio, AC, etc.) to be registered on the multi-remote controller (UC100/UC200/UC500) as devices.



Devices

▣ Keys/Buttons

Keys created in registered home appliances/devices (volume, channel, and other function keys)



Keys or Buttons

3. Getting Started with Multi Remote

▪ UC100/UC200 REMOTE POWER ON



Press power button for second minutes.

(device goes into power saving mode if no action is made)

▪ UC100/UC200 REMOTE POWER OFF



If you press and hold ON and the home screen button

<3 seconds> at the same time for 3 seconds, the power of the remote controller unit is turned off.

▪ UC500 REMOTE POWER ON



Press power button for second minutes.

(device goes into power saving mode if no action is made)

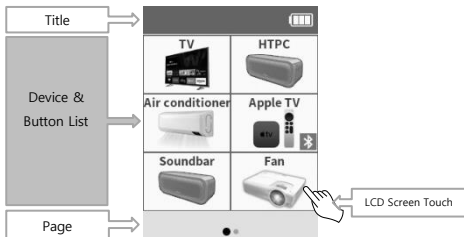
▪ UC500 REMOTE POWER OFF




If you press and hold ON and the home screen button

<3 seconds> at the same time for 3 seconds, the power of the remote controller unit is turned off.

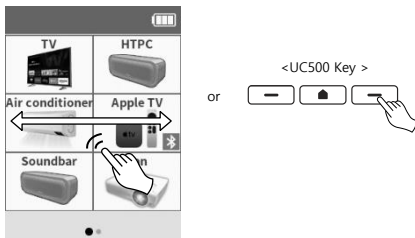
▪ Screen Configuration and Device Selection



* You can select a device by touching the screen, and press  to move to the home screen.

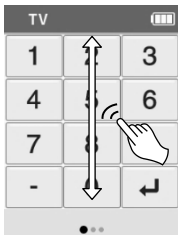
3. Getting Started with Multi Remote

- Page Change



You can change the page by scrolling left and right on the screen or by pressing the previous/next page key on the UC500 product.

- Moving Device



You can quickly move registered devices by scrolling the screen up and down. (It will be moved to devices except Bluetooth devices.)

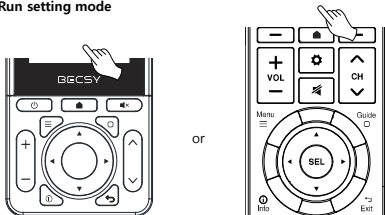
4. Setting Mode

- The basic settings of the BECSY multi remote control are performed in the Settings mode page.

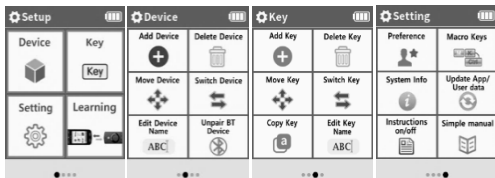
Press UC100/UC200  Home Screen Key or UC500 

Setting Key for 3 seconds for setting mode

- Run setting mode





<UC100/UC200 Home Screen Key 3 seconds> <UC500 Home Screen Key 3 seconds>

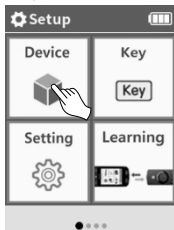


< Setup Mode Screen >

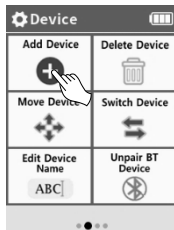
5. Adding Database Devices

- BECSY multi remote controller has a built-in database, so you can easily add various devices.

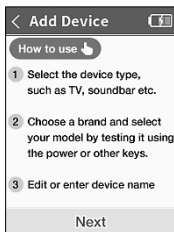
※ Press and hold the UC500  setting key or  the home screen key of UC100/UC200 for 3 seconds, then the screen goes to basic setup mode.



1) Select Device.



2) Select Add Device.



3) When you first run it, the usage instructions will appear. Select Next.



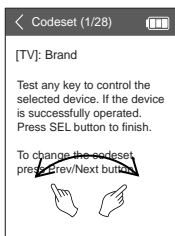
4) Select the type of device you want to add. (Swipe the screen left and right or using the previous/next page buttons. More devices can be searched.)

5. Adding Database Devices



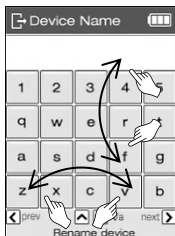
- 4) Select the manufacturer of your device.

(※ You can change the page by scrolling left/right or using the previous/next page key to view more search by device and manufacturer.)



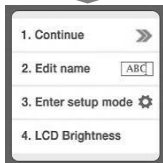
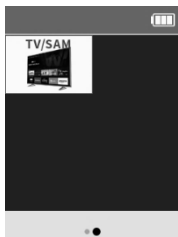
- 5) Select an IR Codeset suitable for the device. and press ON/OFF, Volume, Channel keys, etc. to check if the device operates normally.
- Scroll left and right to find the appropriate Codeset and press **SEL** key to confirm.

5. Adding Database Devices



6) Set the device name.

(※ You can change capital and small letters by scrolling up/down the screen, and the keyboard layout of letters by scrolling/right. After setting the name, press the **SEL** key to save.)





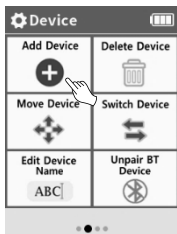
7) When the device addition is complete, the added devices appear in the order they were created on the main screen.

Tip > Press the device button for 3 seconds to display a simple submenu for immediate setup.

6. Adding and Using OTT/Bluetooth Devices

- After selecting OTT, you can add and use a device.
after registering the template class as a basic, go through the pairing process on the home screen to use it.

※ Press and hold the UC500  setting key or  the home screen key of UC100/UC200 for 3 seconds, then the screen goes to basic setup mode.



1) Select Add Device.



2) Select OTT



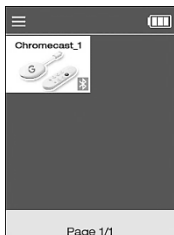
3) Select device type.

※ For Roku devices, we do not go through the pairing process.

6. Adding and Using OTT/Bluetooth Devices



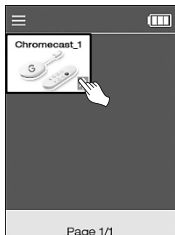
- 4) Enter the device name.
after completion, press the
SEL key to confirm.



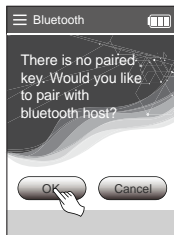
- 5) Go to the home screen
and check the added
devices.

※ How to pair Chromecast class

(Other Bluetooth class pairing methods are similar.)



- 6) Select Chromecast class
device from home screen.



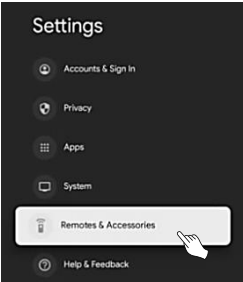
- 7) Select OK on the pairing
screen

6. Adding and Using OTT/Bluetooth Devices ---



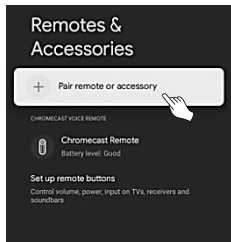
- 8) Make sure that the pairing screen appears as shown.
- The waiting time for pairing is 3 minutes and 30 seconds, and the pairing must be completed within the timeout period

- 9) When the progress pairing screen appears, proceed with pairing in Chromecast as well.

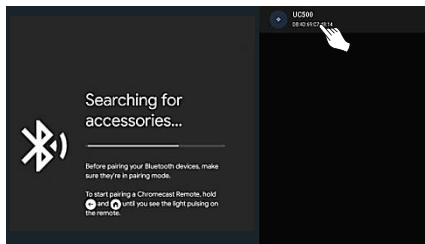


- 10) Select “Remote Controls & Accessories” on the Chromecast settings screen.

6. Adding and Using OTT/Bluetooth Devices



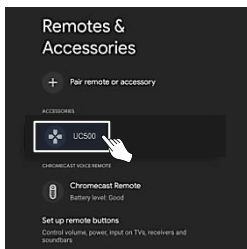
- 11) Select "pair remote or accessory".



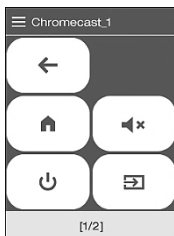
- 12) When the UC500 device screen is displayed, selecting the device automatically initiates pairing proceed. (Searching may take more than 30 seconds depending on the situation.)

If the device is not searched, proceed from step 7 again.

6. Adding and Using OTT/Bluetooth Devices



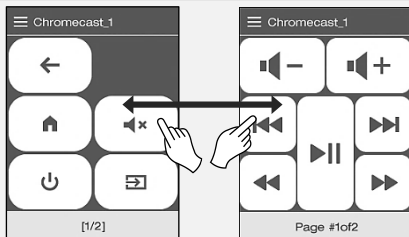
- 13) When pairing is completed, the "UC500" device is registered to Chromecast.



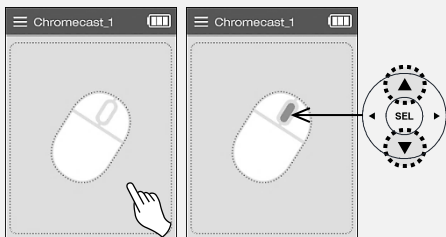
- 14) The pairing progress window appears on the LCD screen of UC500 for a while, and the device selection screen appears. (You can check the operation by pressing the key on the Chromecast device.)

6. Adding and Using OTT/Bluetooth Devices

- This is an example of how to use the Chromecast device.
You can use basic mode/mouse mode/keyboard mode.

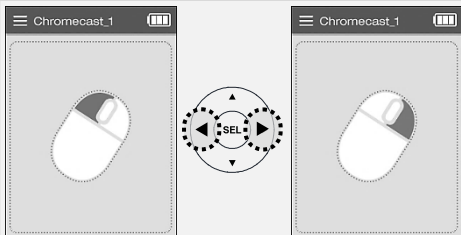


- Main UI screen / Media UI screen of Chromecast device
(Switching the screen using left/right scroll or previous/next keys)



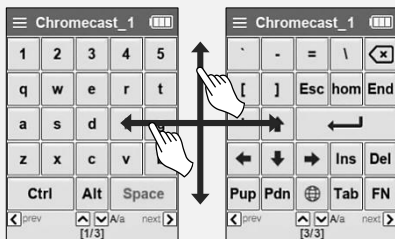
- Mouse movement by dragging the LCD screen.
The wheel button in the center is controlled by the UP/DOWN keys.

6. Adding and Using OTT/Bluetooth Devices



- Left/Right Mouse Click: Use the left/right arrow keys.

(When tapping the LCD screen, only the lower right area is the right button.)

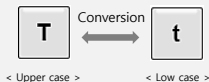
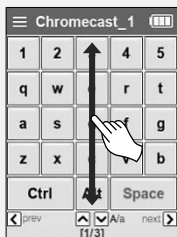


- To move the keyboard screen, use the left/right scroll or previous/next keys.

(Ctrl and Alt keys are used by pressing the following keys while Ctrl keys are pressed.)

Ex) In case of using Ctrl + C : While "Ctrl" key is pressed Click "C"

6. Adding and Using OTT/Bluetooth Devices

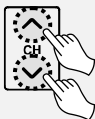


- For uppercase and lowercase letters in English, scroll up/down the LCD screen

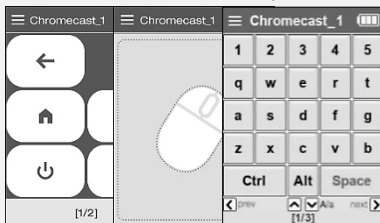


- If the title is displayed in red, it is not connected to the device.
Please wait until the connection is complete.

6. Adding and Using OTT/Bluetooth Devices



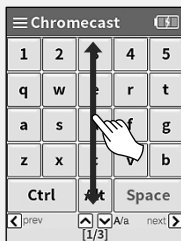
Moves to the next/previous screen whenever the channel UP/DOWN button is clicked



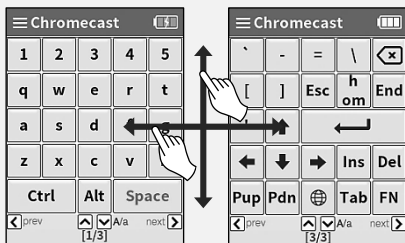
- In the OTT/Bluetooth device menu, you can easily move the screen by using the set's channel UP/DOWN keys.

(Basic UI screen → mouse screen → keyboard screen)

6. Adding and Using OTT/Bluetooth Devices



- To move between uppercase and lowercase letters, scroll up and down the LCD screen.

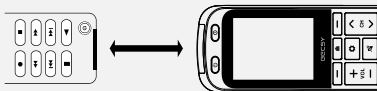


- You can move around the button board screen by using the left/right scroll or the previous/next buttons. (Ctrl, Alt are used by holding down the button and pressing the next button.



예)) When using Ctrl + C: While holding down the "Ctrl" button, click "C"

7. IR Learning

- If the BECSY multi-remote controller itself has unregistered functions or if you want to register a remote control that is not in the database, you can use the IR learning function to control data can be registered.



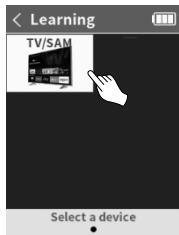
<existing remote to cop>

- 1) For IR learning, first place the IR transmitter of the existing remote and the IR receiver of the BECSY remote controller facing each other at a distance of 2 to 4 cm, then proceed to the next step.
- 2) Press and hold the UC500  setup key or the UC100/UC200  home screen key for 3 seconds to move to the setup mode.



- 3) Select Learning.

7. IR Learning



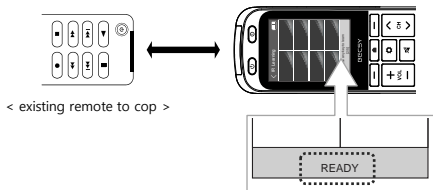
4) Select Devices.



5) Select the button to apply IR learning.

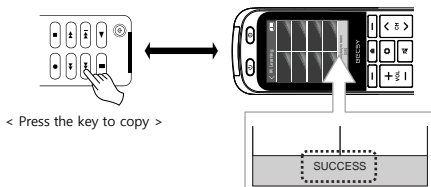
- In addition to the buttons on the LCD screen, the actual buttons (ON/OFF, Volume Up/Down, etc.) can also be selected. However, the home screen, the previous/next page button, and the setting button cannot be applied to IR learning. You can add a new button by selecting the + button on the screen.

6) When the phrase "READY" blinks at the bottom of the screen, you are ready for IR learning.



7. IR Learning

- 7) When you press the key you want to learn from the existing remote, it automatically receives and stores the signal at the specified key on the UC500. When IR learning is completed normally, the phrase 'SUCCESS' appears at the bottom of the screen.



< Press the key to copy >

- 8) In the same way, the rest of the keys do IR learning.

※ If it is not completed at once, repeat the learning.

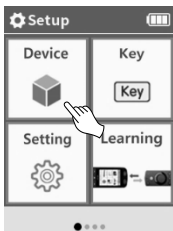
- You can refer to the IR learning method video by accessing the QR Code below.



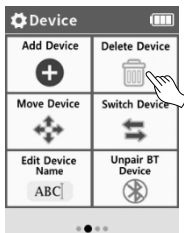
8. Deleting Devices

1) Press and hold the UC500  setup key or the UC100/UC200

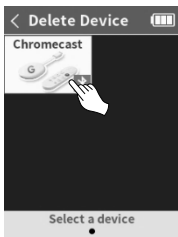
 home screen key for 3 seconds to move to the setup mode.



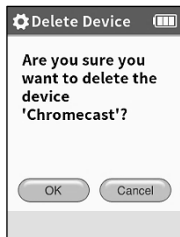
2) Select Device.



3) Select Delete Device



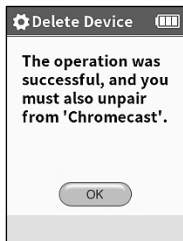
4) Select device to delete



5) Press OK key

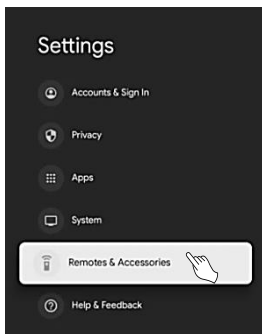
(※ All button information stored in the device will be deleted upon deletion.)

9. Deleting Devices (Bluetooth)



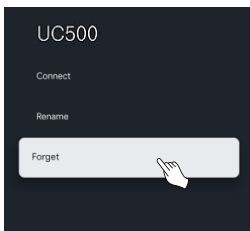
- 6) In case of deleting Bluetooth devices, a confirmation window is displayed once more.

※ Ex) Delete Chromecast device

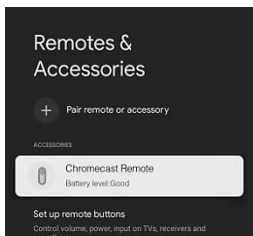


7-1) Chromecast Settings → Select "Remote & Accessories".

9. Deleting Devices (Bluetooth)



7-2) After selecting the UC500 device, select "Don't Save".



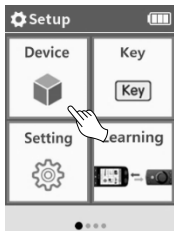
7-3) Make sure the "UC500" device is removed from the "Remotes & Accessories" menu.

10. Devices Moving

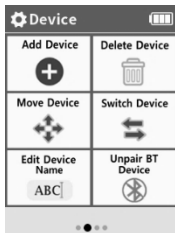
- The BECSY multi-remote controller can easily change the device screen configuration by moving the location of the registered device.

※ Press and hold the UC500  setup key or the UC100/UC200

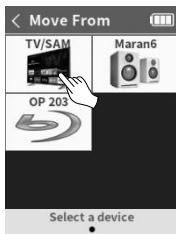
 home screen key for 3 seconds to move to the setup mode.



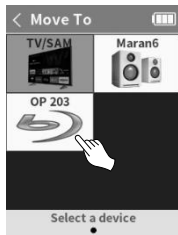
1) Select Device.



2) Select Move Device

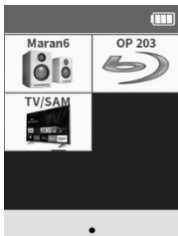


3) Select the device to be moved.



4) Select the location you want to move to.

10. Devices Moving



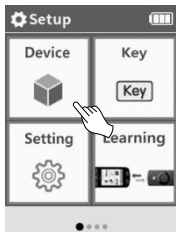
- 5) It is automatically sorted after being moved.

11. Device Exchange

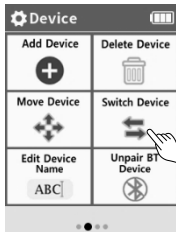
The BECSY multi remote control can exchange positions between two registered devices.

※ Press and hold the UC500  setup key or the UC100/UC200

 home screen key for 3 seconds to move to the setup mode.



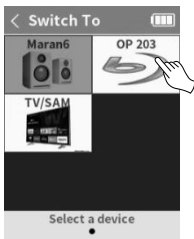
1) Select Device.



2) How to use after selecting device exchange Select "Next".





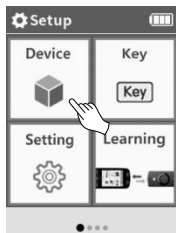
3) Select the device you want to exchange.



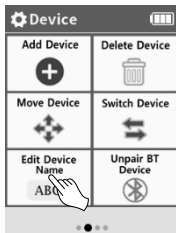
4) Select the location where the exchange will take place.

12. Changing Devices Names

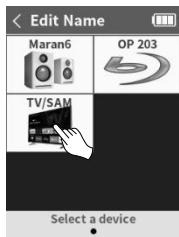
- 1) Press and hold the UC500  setup key or the UC100/UC200  home screen key for 3 seconds to move to the setup mode.



- 2) Select Device.



- 3) Select Edit Device Name



- 4) Select the device to be renamed.



- 5) Change name.

12. Changing Devices Names



- 6) Press "OK" when changing device name and icon together.
Press "Cancel" in case of changing only the name.

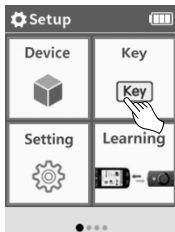


- 7) If you select "OK" to change the name and icon together,
select the device icon to be changed to switch the name and
icon.

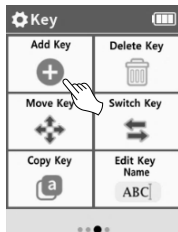
13. Keys Adding

※ Press and hold the UC500  setup key or the UC100/UC200

 home screen key for 3 seconds to move to the setup mode.



1) Select Key.



2) Select Add Key.



3) Select the default keys.

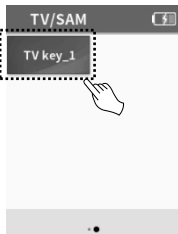


4) Sets the name of the key to be added.

13. Keys Adding





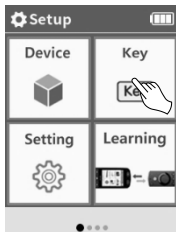
- 5) You can check the key created in the selected device (ex> TV).



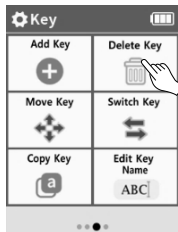
- 6) You can check the key created in the selected device (ex> TV).

14. Deleting Keys

- 1) Press and hold the UC500  setup key or the UC100/UC200  home screen key for 3 seconds to move to the setup mode.



- 2) Select Key.



- 3) Select Delete Key.



- 4) Select Key




- 5) Select the device that has the key to delete.

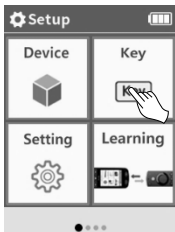
14. Deleting Keys



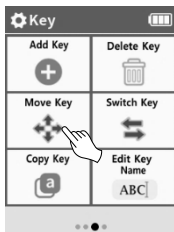
6) Select the key to delete.

15. Move Key

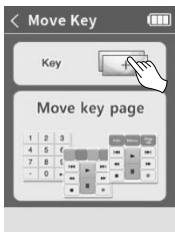
- 1) Press and hold the UC500  setup key or the UC100/UC200  home screen key for 3 seconds to move to the setup mode.



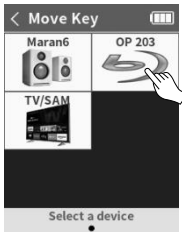
- 2) Select Key.



- 3) Select Move Key on the second page of Basic Setup.



- 4) Select Key



- 5) Select the device to move the key to.

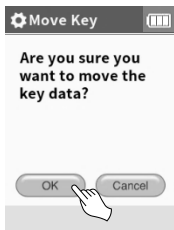
15. Move Key



- 6) Select the soft button you want to move.



- 7) Select the button of the location to be moved.




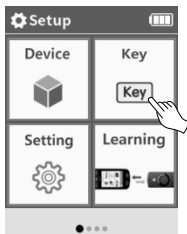
- 8) Confirm by pressing OK.

16. Coping Keys

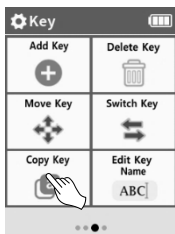
- You can copy the settings of all buttons (actual buttons, number pad keys, and soft buttons) registered on a device to other devices and other buttons.

※ Press and hold the UC500  setup key or the UC100/UC200

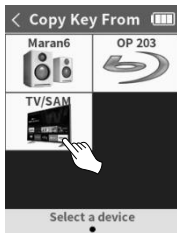
 home screen key for 3 seconds to move to the setup mode.



1) Select Key.



2) Select Copy Key.

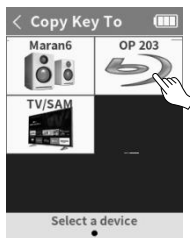


3) Select the device on which the button you want to copy is registered.

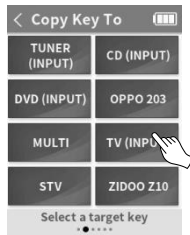


4) Select the button to copy.

16. Copying Keys



5) Select the device to copy to.



6) Select the button of the position (slot) to be copied.

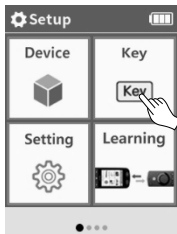
You can select not only the Soft Button but also the actual button on the remote controller.

17. Renaming Keys

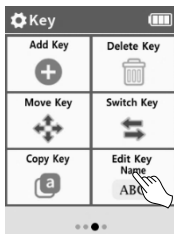
- The key (button) name change function can only change the name of the screen soft button.

※ Press and hold the UC500  setup key or the UC100/UC200

 home screen key for 3 seconds to move to the setup mode.



1) Select Key.



2) Select Edit Key Name on the second page of Basic Setup.

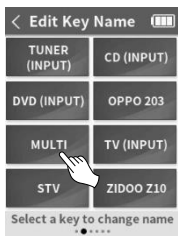


3) Choose whether to edit the text or change it to an icon.



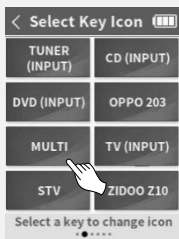
4) Select device.

17. Renaming Keys



- 5) Select Soft button to rename. 6) After entering the name, confirm with the SEL button.

※ If you change it to an icon.



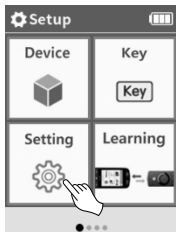
- 1) After selecting Change Icon on p.38-3, select the button to change.
2) Select an icon.

18. How to create a macro button

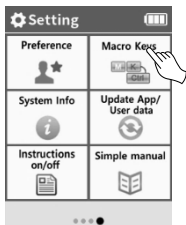
- The Macro function allows you to perform multiple key actions at once (e.g., turning on the TV and audio simultaneously, or automatically changing the input when the TV turns on, etc.).

※ Press and hold the UC500  setup key or the UC100/UC200

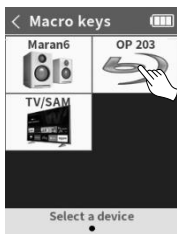
 home screen key for 3 seconds to move to the setup mode.



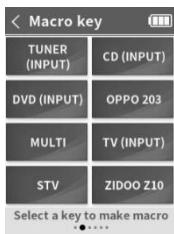
1) Select Setting.



2) After selecting the macro button, select "Next" for usage instructions.



3) Select the device you want to assign as a macro key.

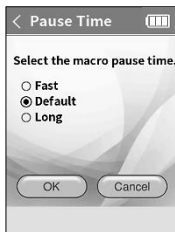


4) Select the button you want to make into a macro. Or create a new button.

18. How to create a macro button



5) OK Select



5) Set the speed of macro actions.



6) OK Select



- 7) Select the key you want to add to the macro and add it. (You can move and select multiple devices)
- 8) Once you are done adding keys, press the Settings button.

18. How to create a macro button _____



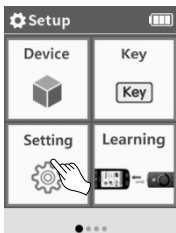
9) OK Select

19. Preference

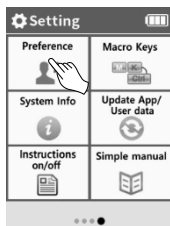
- The Preference menu consists of 5 menus:
Display, Sound, Change name, Other, Reset settings

※ Press and hold the UC500  setup key or the UC100/UC200

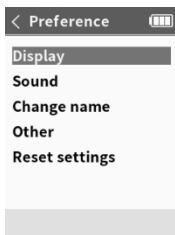
 home screen key for 3 seconds to move to the setup mode.



1) Select Setting.



2) Select Preference.



3) Select menu.

19. Preference

- **Change screen display**

Change display settings such as screen auto-off, language, etc.

- **Set beep sound**

key beep ON/OFF.

- **Change name**

Change the name of the BECSY integrated remote control

- **Other**

Set other functions.

- **Reset settings**

Resets the settings.

20. System Info

- Display the system information.



21. Update app/user data



- You can update software and back up and download database and user data.
 - Software update
 - Database download
 - User data download
 - User data backup
 - Single device download
 - Single device backup
 - Factory reset
- If you press the Exit key three times during download and update, you will exit the page.

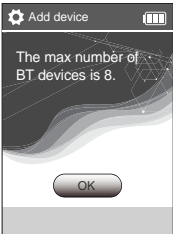

22. Instructions on/off

- You can set whether to display the instructions for use when selecting a menu.

23. Simple manual

Error Screen Display	Action
<p>1</p> 	<ul style="list-style-type: none"> ▪ The same Bluetooth device name cannot be duplicated.
<p>2</p> 	<ul style="list-style-type: none"> ▪ When the pairing standby time (3 minutes and 30 seconds) has passed.

Error Screen Display		Action
3	<div><div><div>■ Error message when connecting to an existing registered device during pairing attempt</div><div></div></div></div>	<ul style="list-style-type: none">▪ After turning off the Bluetooth of the Android_tv_n10 device, try pairing.
4	<div><div><div>■ Message that occurs when a connection request is received from an unknown Bluetooth host device during pairing attempt</div><div></div></div></div>	<ul style="list-style-type: none">▪ Occurs if you do not delete the previously connected pairing information. Find the device you are trying to connect to, delete the pairing information, and try pairing.

Error Screen Display	Action
<div data-bbox="101 842 126 880">5</div> <div data-bbox="174 363 497 794">  </div> <div data-bbox="174 922 497 1353">  </div>	<ul style="list-style-type: none"> ▪ This message is displayed when registering more than 8 Bluetooth devices that can be registered. Delete one or more Bluetooth devices and try pairing again. <ul style="list-style-type: none"> ※ The maximum number of Bluetooth devices registered is 8.

■ Product Specifications

Model	UC100	UC200	UC500
IR	Infrared Rx/Tx		
Bluetooth	BLE 5.x		
USB	USB Type C		
Battery	Li-ion 2000mAh		Li-ion 2600mAh
Dimensions	135x54x17(mm)	115x54x17(mm)	204x54x31(mm)
Weight	115g	105g	176g
COO	Republic of Korea		

■ Product Warranty

After-sales service processing regulations

In case of defects in performance and function of the product that occur during normal use of the product, free after-sales service is available only for 1 year from the date of purchase.

<Repair fee will be charged for breakdowns caused by customer negligence such as damage due to impact or submersion, etc.>

- Customer Center : AS@becsy.net

- Contact -

4F. S dong, Gangnam Paragon, 338, Hakdong-ro, Gangnam-gu,
Seoul, 06099 Republic of Korea

- www.becsy.net



The contents of the user manual are subject to change without notice to improve functions and performance.

<Ver.1.0>

▪ **Product Safety Guidelines**

※ **Read the safety instructions carefully before using this product.**

- Keep out of reach of children.
- Do not disassemble the product or replace parts yourself.
- Replacement of components (if not applicable) and parts may be carried out by an authorized dealer or service provider.
- Keep your device in a safe place. Don't place the product exposed to rain, moisture, or liquid.
- If the product is overheated, damaged by dropping, or dropped into liquid, stop using it and contact the after-sales service center.
- If smoke or strange smells occur, turn off the power and discontinue use.
- Lightning may break the charging cable connected to the product.
- Be careful when transporting the product. (Falling may cause injury.)
- Be careful not to expose it to direct sunlight.
- Be sure to use certified charging adapters.
- When charging the product with a USB cable, use a USB cable suitable for the product.
- Before maintenance and cleaning, unplug the product and wipe it with a dry or slightly wet clothes.
- Store away from volatile liquids such as pesticides.
- To maintain a long battery life, charge the battery at least once every 3 months.
- Do not insert sharp metal objects such as keys, hairpins, nails, etc.
- Do not put in dishwasher, oven or washing machine.

▪ Battery Safety Guidelines

※ For products with batteries, observe the following.

"CAUTION "

- Improper handling of the battery installed in the product may cause a fire or get burned chemically.
- Dispose of replaceable batteries after use according to regulations and, if possible, recycle them. Batteries may explode if damaged.
- Throwing it away as household waste or throwing it into the fire can explode.

Dispose of the product according to the regulations

Refer to additional instructions and more information at

www.becsy.net

▪ FCC

a. Rule Part 15.19(a)(3): This device complies with part 15 of the FCC Rules. Operation is subject to the following two conditions: (1) This device may not cause harmful interference, and (2) this device must accept any interference received, including interference that may cause undesired operation.

b. Rule Part 15.21: The users manual or instruction manual for an intentional or unintentional radiator shall caution the user that changes or modifications not expressly approved by the party responsible for compliance could void the user's authority to operate the equipment.

Note: This equipment has been tested and found to comply with the limits for a Class B digital

NOTE: This equipment has been tested and found to comply with the limits for a Class B digital device, pursuant to part 15 of the FCC Rules. These limits are designed to provide reasonable protection against harmful interference in a residential installation. This equipment generates, uses and can radiate radio frequency energy and, if not installed and used in accordance with the instructions, may cause harmful interference to radio communications. However, there is no guarantee that interference will not occur in a particular installation. If this equipment does cause harmful interference to radio or television reception, which can be determined by turning the equipment off and on, the user is encouraged to try to correct the interference by one or more of the following measures:

- Reorient or relocate the receiving antenna.
- Increase the separation between the equipment and receiver.
- Connect the equipment into an outlet on a circuit different from that to which the receiver is connected.
- Consult the dealer or an experienced radio/TV technician for help

▪ Product Approval Label

► Search for product E-labels..

1. Internet search.

- 1) Click <https://www.becsy.co.kr/support.html>.
- 2) You can see E-labels by moving the screen down.

2. Physical label scanning.

- 1) Scan the QR code on the label.
- 2) Click "SUPPORT" in the upper right corner of the homepage screen.
- 3) You can see E-labels by moving the screen down.

- The e-label can be accessed without "special codes, accessories, or permissions".
- Third parties cannot modify the e-label



UC100



UC200



UC500

▪ **Product Approval Label**

► How to check product FCC ID.

1. You can check FCC ID on the screen when you turn on the product.
2. Check FCC ID on screen.
 - 1) Press the HOME button.
 - 2) Press "Setting" on the Setup screen.
 - 3) You can check FCC ID by pressing "System info" on the Setting screen..

▪ Memo

▪ Memo

▪ Memo

▪ Memo

BECSY