

ExtremTrac Waterproof GPS Tracker User Manual

Model: MC500 (V1.0)

2012-09-20

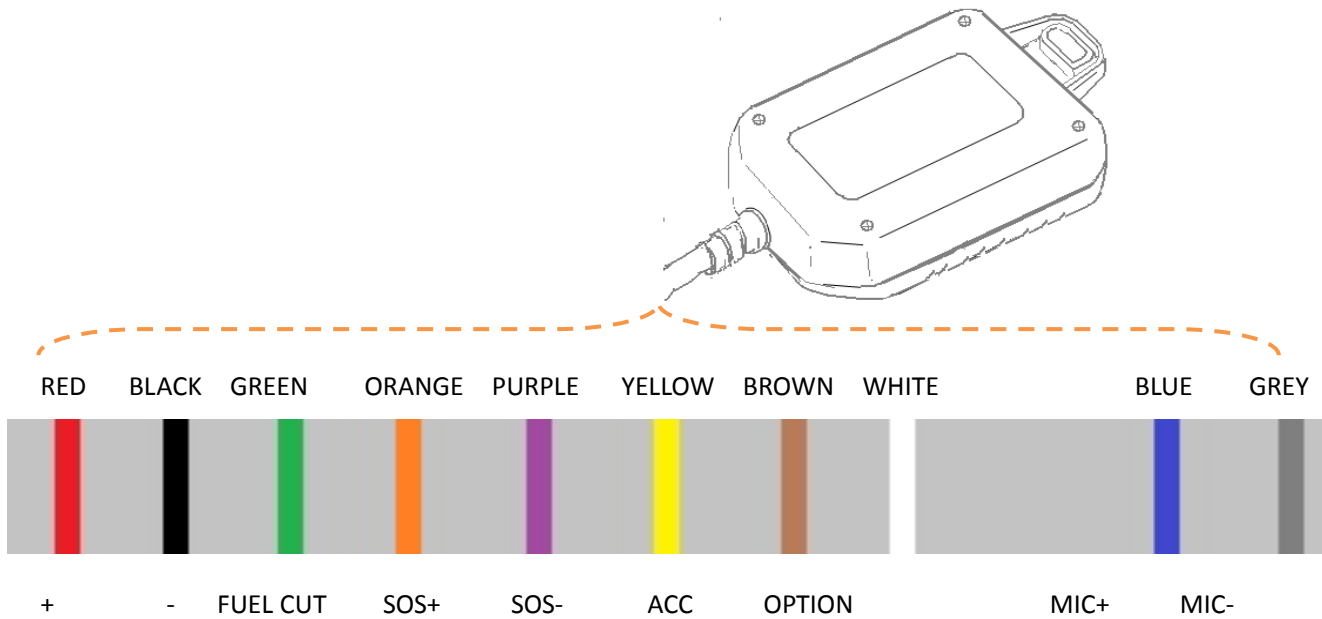
➤ 1. Function

The GPS / GPRS / SMS vehicle tracking positioning system, built-in GPS positioning module + GPRS communication module with the network map platform, real-time tracking of vehicle location information and vehicle

Like real-time monitoring and remote control of the vehicle, such as off the oil recovery oil passage. Product specific features:

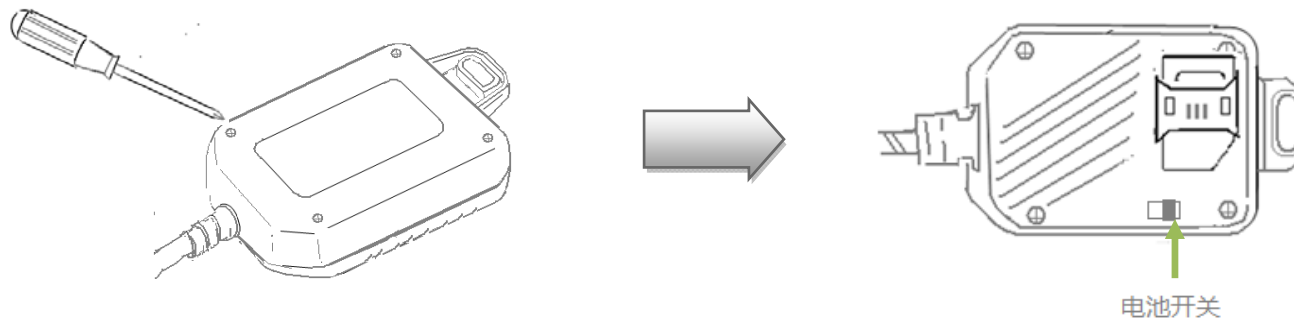
1. Fixed time report
2. Support AGPS assisted positioning
3. Real time report
4. Electronic fence (set on the host the remote instruction set)
5. SOS emergency alarm
6. Over speed alarm
7. Vibration sensor G-SENSOR mobile wake-up alarm
8. Low power alarm
9. Power-saving mode (built-in G-SENSOR, if still detected automatically enters sleep mode, move immediately wake-up)
10. Quad-band 850, 900, 1800, 1900
11. FLASH blind spot to make a report after the 2000 points (when there is no GPRS signal)
12. USB / remote update
13. Standby current does not exceed 15mAh
14. Mileage reports / mileage settings
15. Cut off the oil / restore oil line

➤ 2.Wiring Installation:

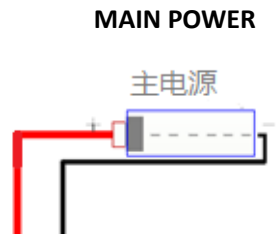


【Wiring Installation】:

- 1). Default factory settings without a headset and speakers, does not provide voice capabilities.
- 2). Install the SIM card, remove the four bottom cover screws, install the SIM card, turn on the power switch, and then loaded on the screws.



General installation, just connect the positive and negative electrical and ACC wire:



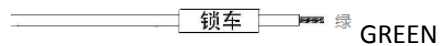
4). Ignition Wire



YELLOW

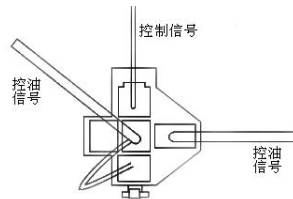
Ignition detection cable : Connect the vehicle ACC ignition signal. Can detect the vehicle's ignition On/Off status

5). Car lock control signal lines:



GREEN

In order to ensure the safety of the vehicle, the relay is normally closed relay.



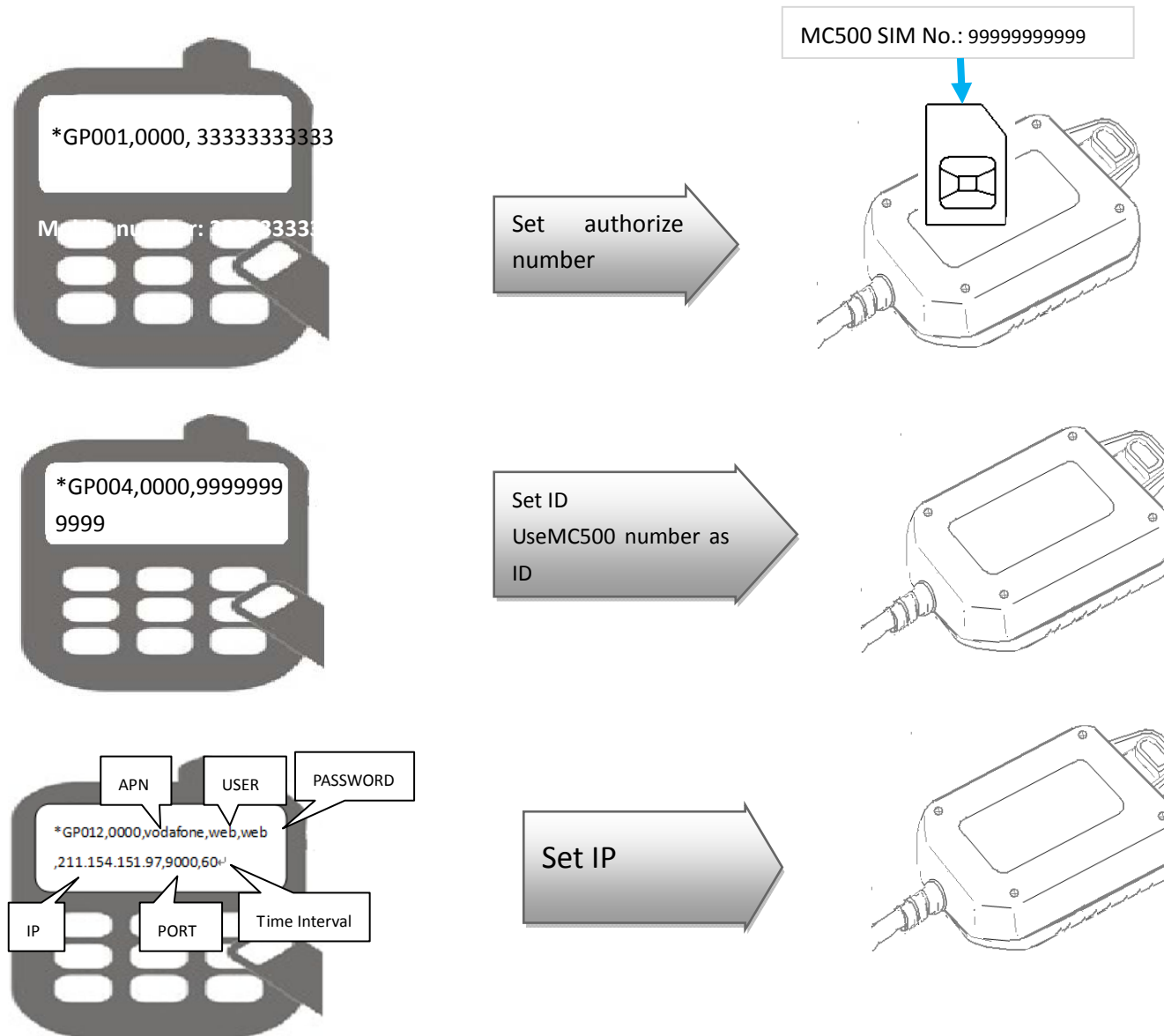
6). SOS signal button



Emergency situations, the user can direct alarm to the alarm center number.

➤ 3 SMS Configuration:

Put the MC500 device outside in open area, or near the window, call the SIM card number of the tracker, if it rings, then you can start to configure the unit.



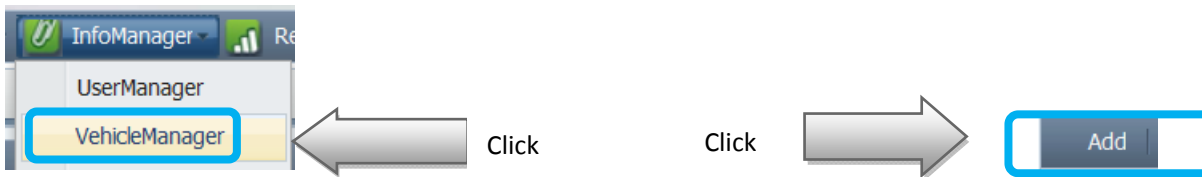
Web Configuration:

➤ Log in:

www.webgpsonline.net

Username: MC500

Password: 123456

➤ Please find one **un-registered** unit for your car, modify 3 items of parameters, then save setting.

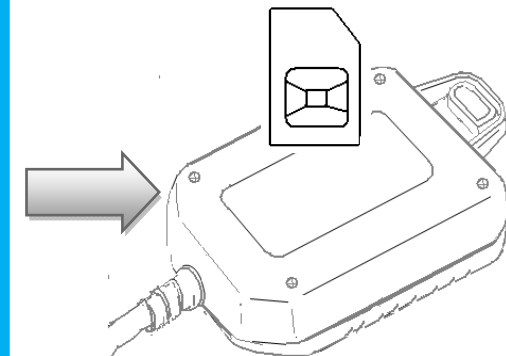
The image shows a 'VehicleInfo' form with the following fields and values:

Plate Number:	mohamed
SimNumber:	20111114001
TerminalID:	9999999999
Color:	blue
Group:	MC500Demo
VehicleType:	Vehicle
Driver:	mark
VehicleID:	123456
LogTime:	2011-11-14
SimCardType:	SIM
TerminalType:	Et700
ServerTime:	2011-11-14
ServerEndTime:	2012-1-14
Ico:	Vehicle

The fields 'Plate Number', 'TerminalID', and 'VehicleID' are highlighted with blue boxes.

You only need to modify 3 items parameter:

1. Plate Number: Change it to your car Plate No.
2. Terminal ID: 999999999999
User the number of tracker SIM card (better have 11 digit, if no 11 digit, then add 0)
3. Vehicle ID: if you have many cars, you can use this to identify each car

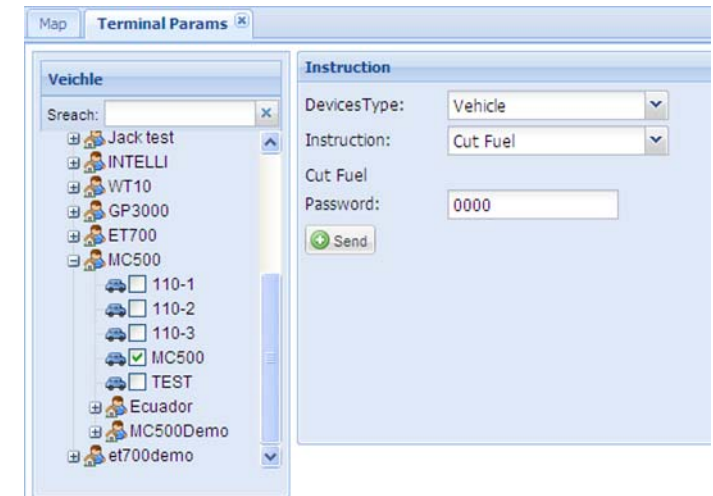


Online Tracking & Control

Go to Fleet Management ---->Live Tracking, start the tracking.



Go to Parameters----> Device Parameters to do other settings



➤ 4. Mobile Phone Control

Cut fuel: *GP011,0000

Recover fuel: *GP013,0000

FCC STATEMENT

1. This device complies with Part 15 of the FCC Rules. Operation is subject to the following two conditions:

(1) This device may not cause harmful interference.

(2) This device must accept any interference received, including interference that may cause undesired operation.

2. Changes or modifications not expressly approved by the party responsible for compliance could void the user's authority to operate the equipment.

NOTE: This equipment has been tested and found to comply with the limits for a Class B digital device, pursuant to Part 15 of the FCC Rules. These limits are designed to provide reasonable protection against harmful interference in a residential installation.

This equipment generates uses and can radiate radio frequency energy and, if not installed and used in accordance with the instructions, may cause harmful interference to radio communications. However, there is no guarantee that interference will not occur in a particular installation. If this equipment does cause harmful interference to radio or television reception, which can be determined by turning the equipment off and on, the user is encouraged to try to correct the interference by one or more of the following measures:

- Reorient or relocate the receiving antenna.

- Increase the separation between the equipment and receiver.

- Connect the equipment into an outlet on a circuit different from that to which the receiver is connected.

- Consult the dealer or an experienced radio/TV technician for help.

FCC Radiation Exposure Statement

This equipment complies with FCC radiation exposure limits set forth for an uncontrolled environment. This equipment should be installed and operated with minimum distance 20cm between the radiator & your body