

Nivis, LLC

2.4 GHz Street Light Node

FCC ID#: SQB-NIVISSLM0002

Photo One – Internal Open for Inspection, Shielded



Nivis, LLC

2.4 GHz Street Light Node

FCC ID#: SQB-NIVISSLM0002

Photo Two – Internal Open for Inspection, Shielded



Nivis, LLC

2.4 GHz Street Light Node

FCC ID#: SQB-NIVISSLM0002

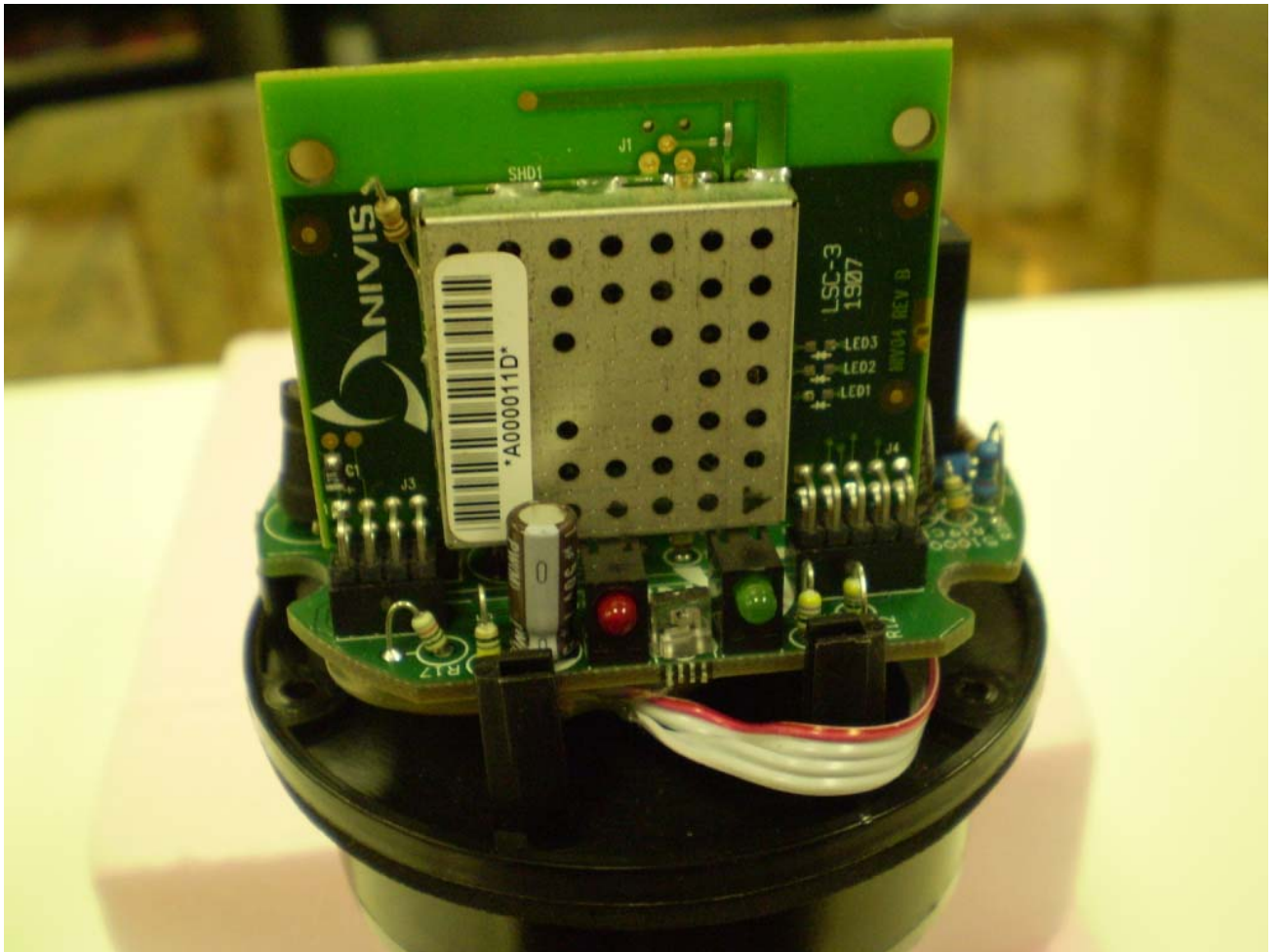
**Photo Three – Internal
Open for Inspection, Shielded**



Nivis, LLC

2.4 GHz Street Light Node
FCC ID#: SQB-NIVISSLM0002

Photo Four– Internal
Open for Inspection

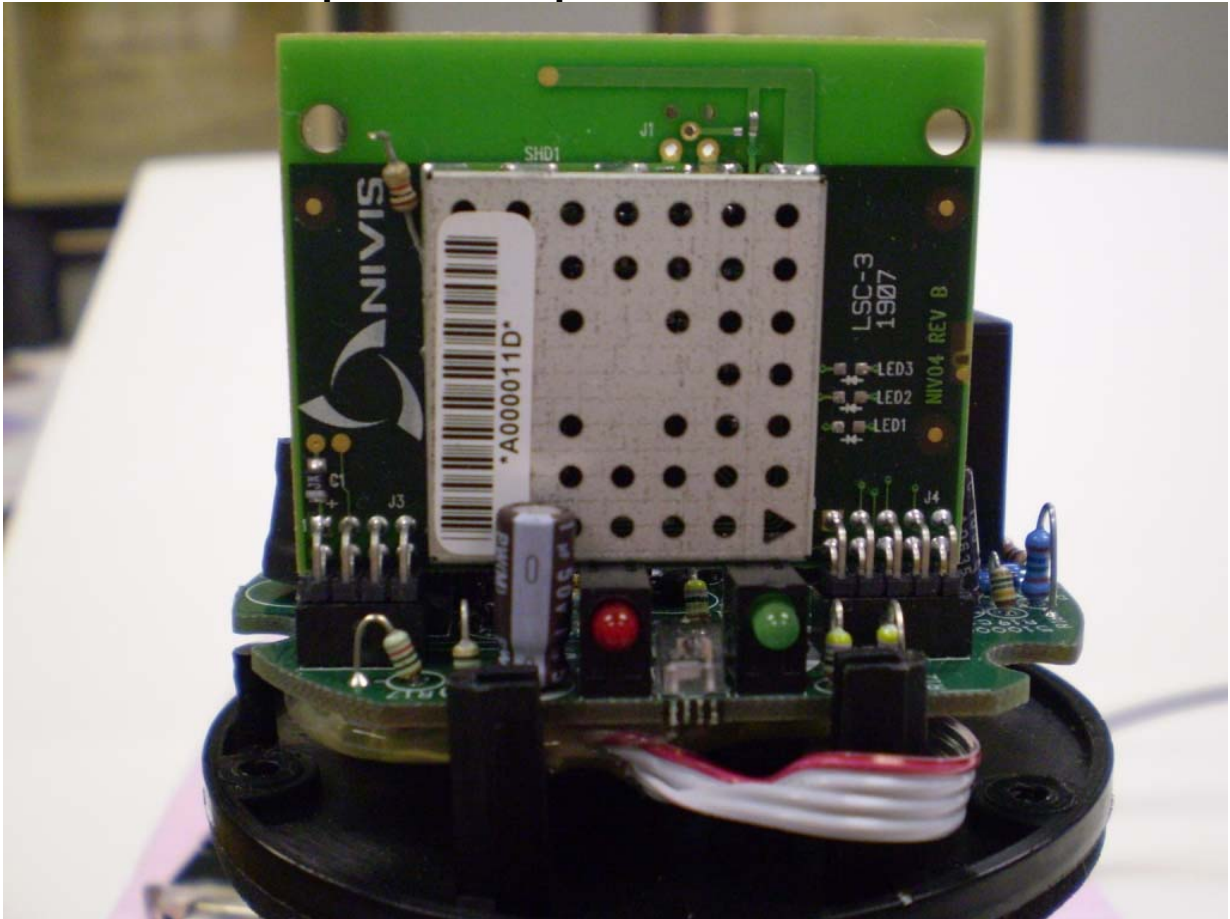


Nivis, LLC

2.4 GHz Street Light Node

FCC ID#: SQB-NIVISSLM0002

Photo Five – Internal Open for Inspection, Shielded



Nivis, LLC

2.4 GHz Street Light Node
FCC ID#: SQB-NIVISSLM0002

Photo Six – Internal
Open for Inspection, Shielded



Nivis, LLC

2.4 GHz Street Light Node
FCC ID#: SQB-NIVISSLM0002

Photo Seven – Internal
Open for Inspection, Shielded

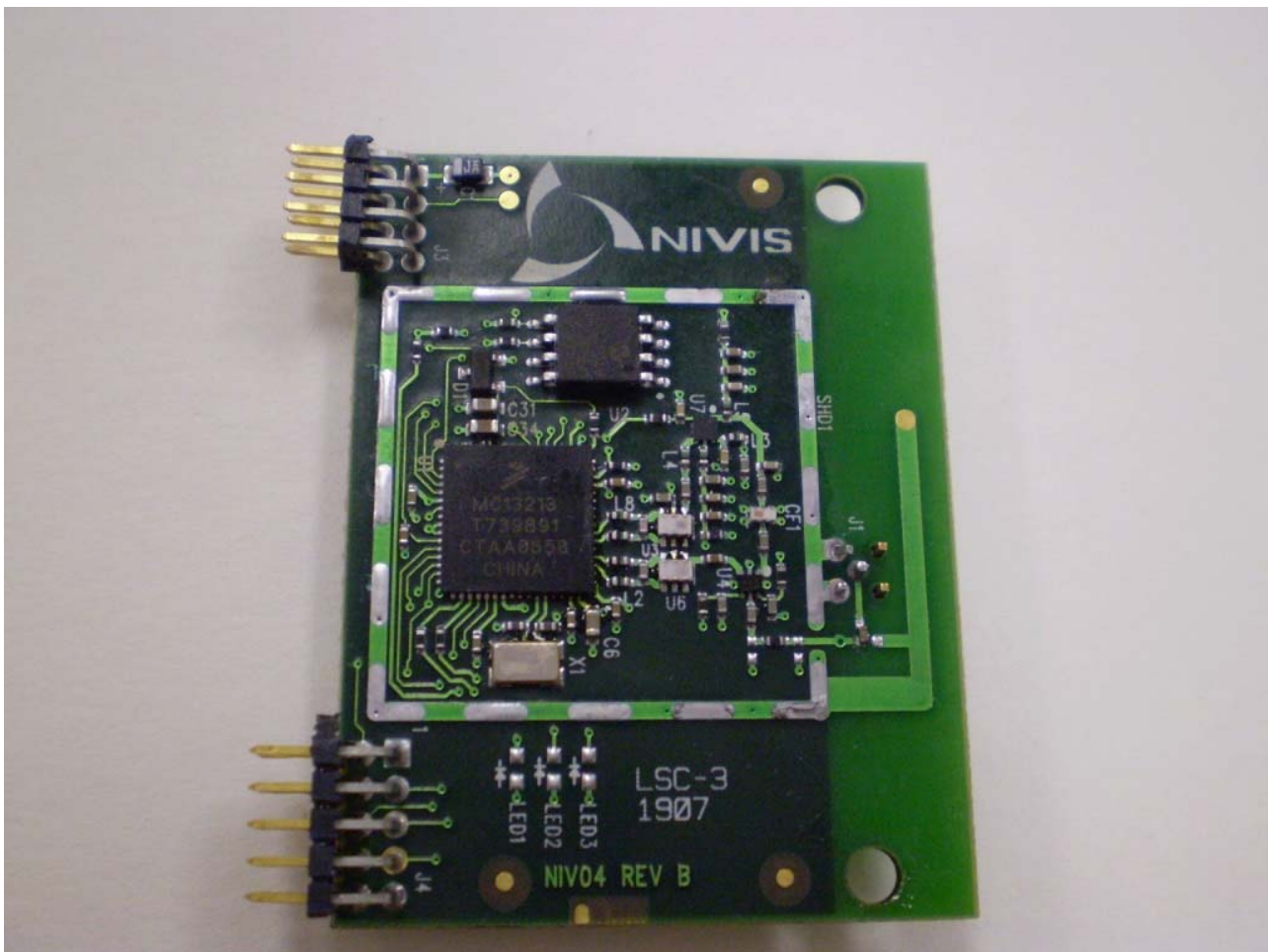


Nivis, LLC

2.4 GHz Street Light Node

FCC ID#: SQB-NIVISSLM0002

Photo Eight – Internal Open for Inspection, Shield Removed



Nivis, LLC

2.4 GHz Street Light Node

FCC ID#: SQB-NIVISSLM0002

**Photo Nine – Internal
Open for Inspection, Shield Removed**

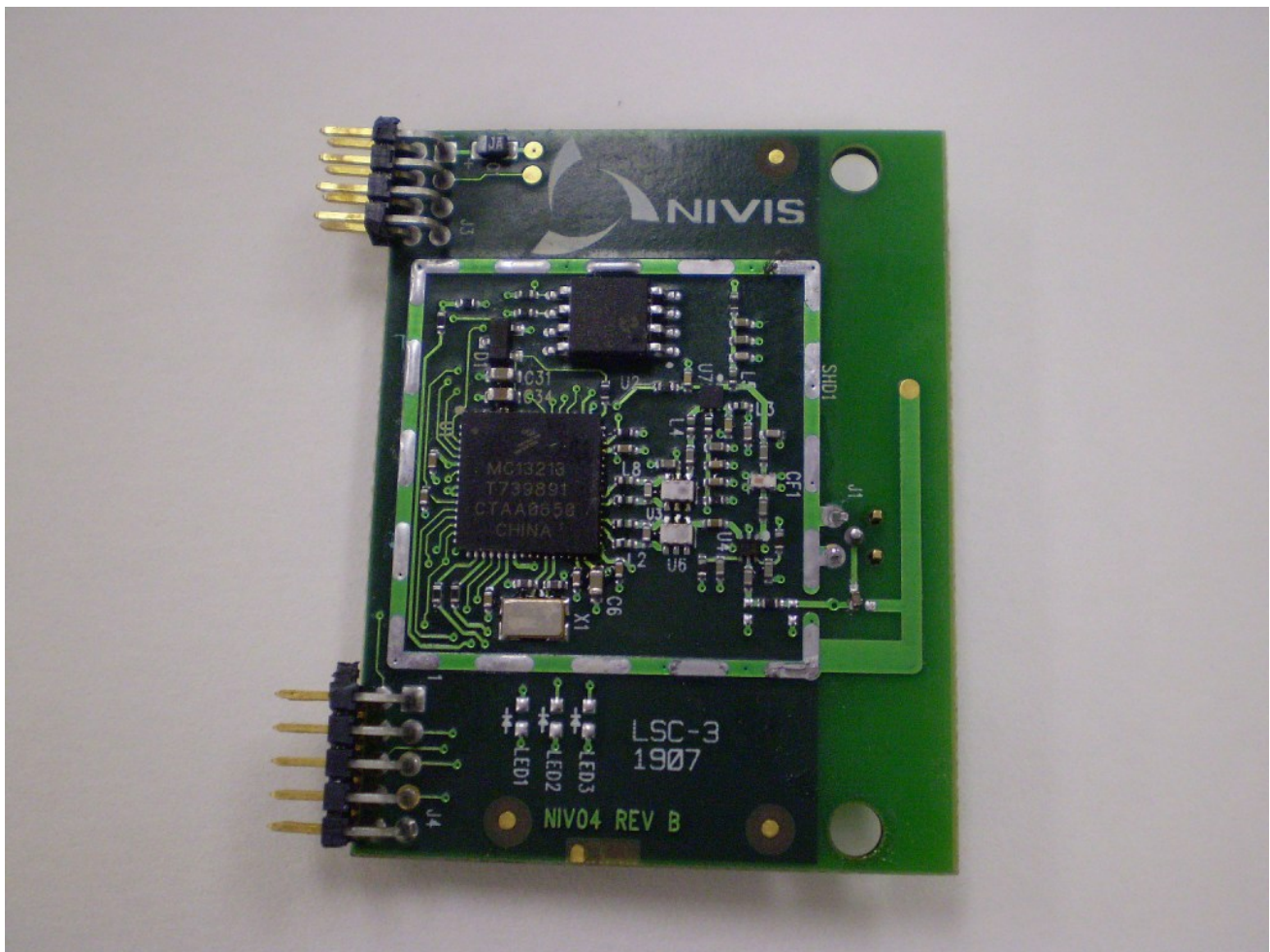


Nivis, LLC

2.4 GHz Street Light Node

FCC ID#: SQB-NIVISSLM0002

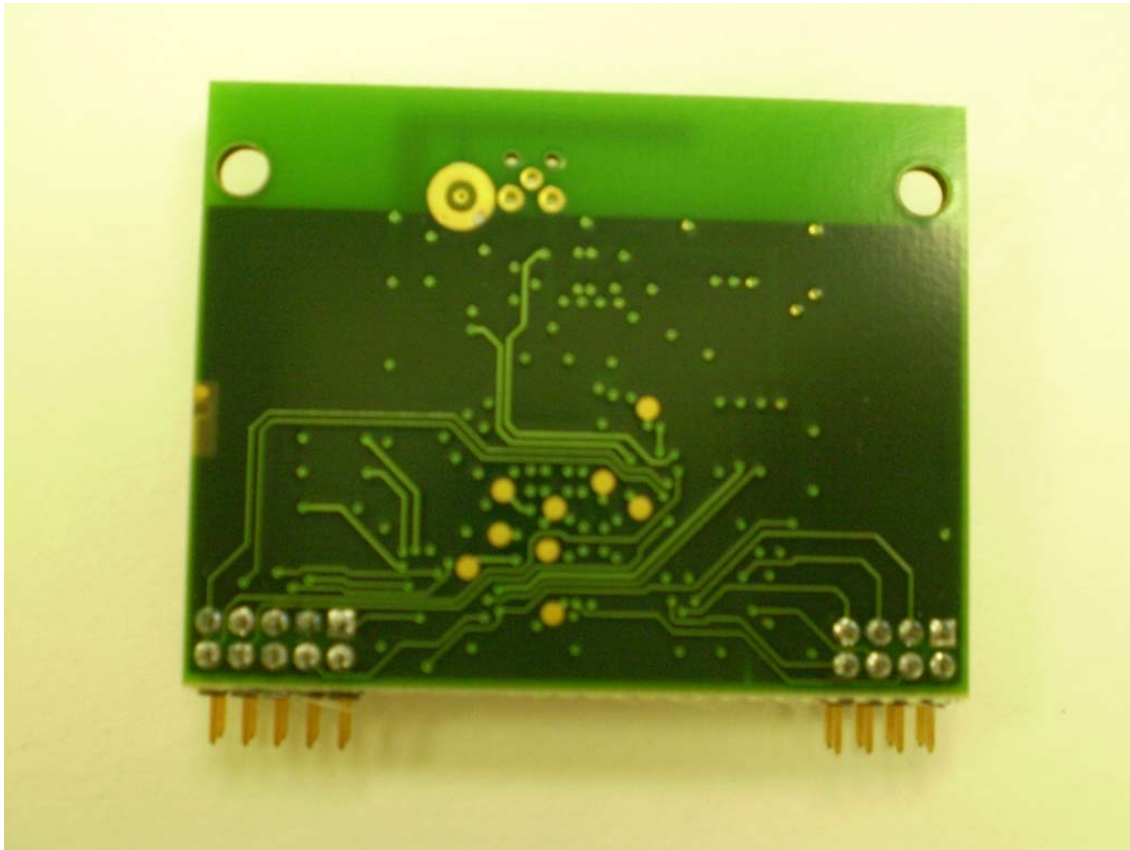
Photo Ten– Internal
Open for Inspection, Shield Removed



Nivis, LLC

2.4 GHz Street Light Node
FCC ID#: SQB-NIVISSLM0002

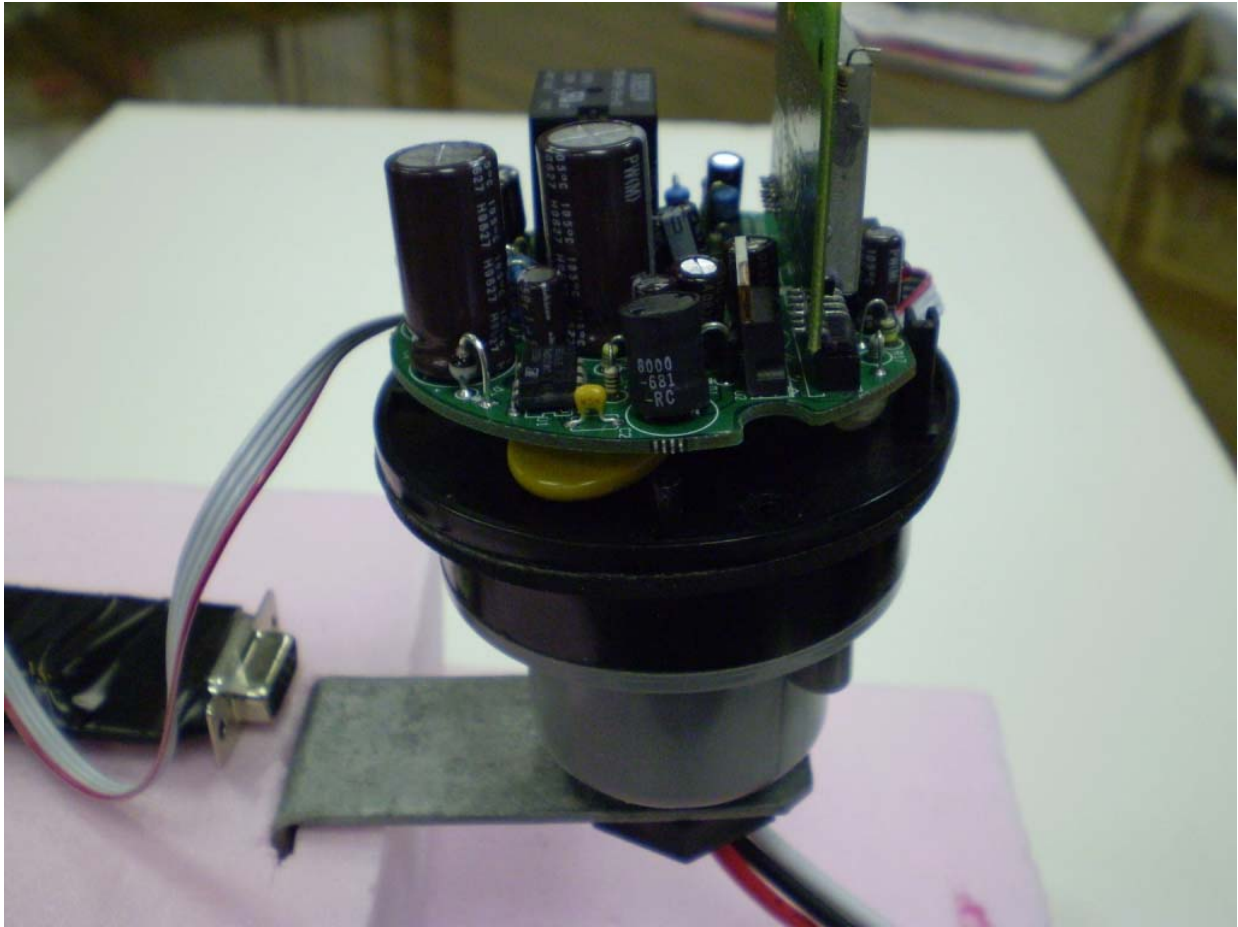
Photo Eleven – Internal
Back of PCB Board



**Nivis, LLC
2.4 GHz Street Light Node**

FCC ID#: SQB-NIVISSLM0002

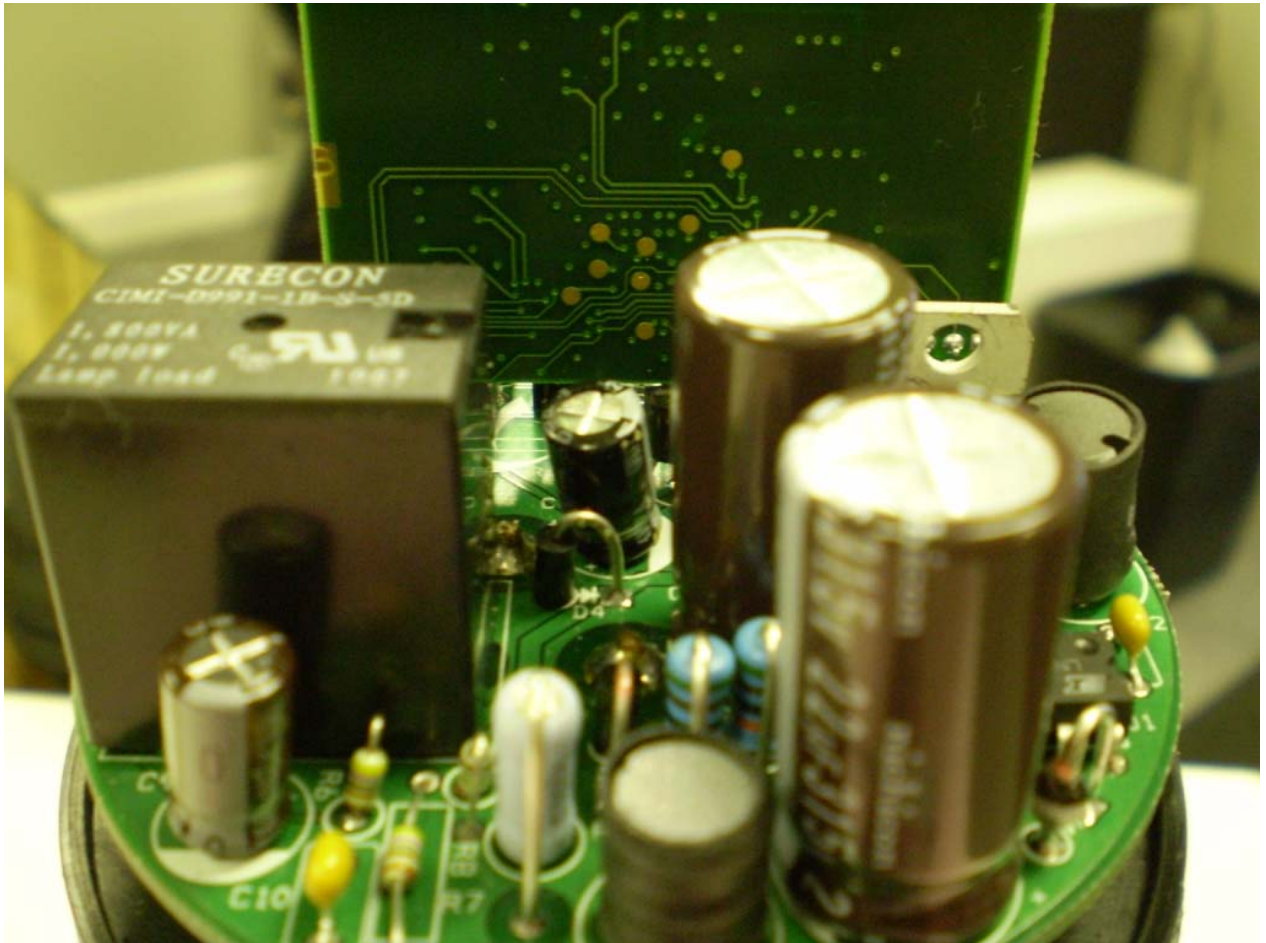
**Photo One – Internal
Side View of Board on which the Radio Board Sits**



**Nivis, LLC
2.4 GHz Street Light Node**

FCC ID#: SQB-NIVISSLM0002

**Photo Two – Internal
Rear View of Board on which the Radio Board Sits**



**Nivis, LLC
2.4 GHz Street Light Node**

FCC ID#: SQB-NIVISSLM0002

**Photo Three – Internal
Top View of Board on which the Radio Board Sits**



**Nivis, LLC
2.4 GHz Street Light Node**

FCC ID#: SQB-NIVISSLM0002

**Photo Four – Internal
Side View of Board on which the Radio Board Sits**



**Nivis, LLC
2.4 GHz Street Light Node**

FCC ID#: SQB-NIVISSLM0002

**Photo Five – Internal
Side View of Board on which the Radio Board Sits**

