



INTERNAL PHOTOS

Written by : O. ROY

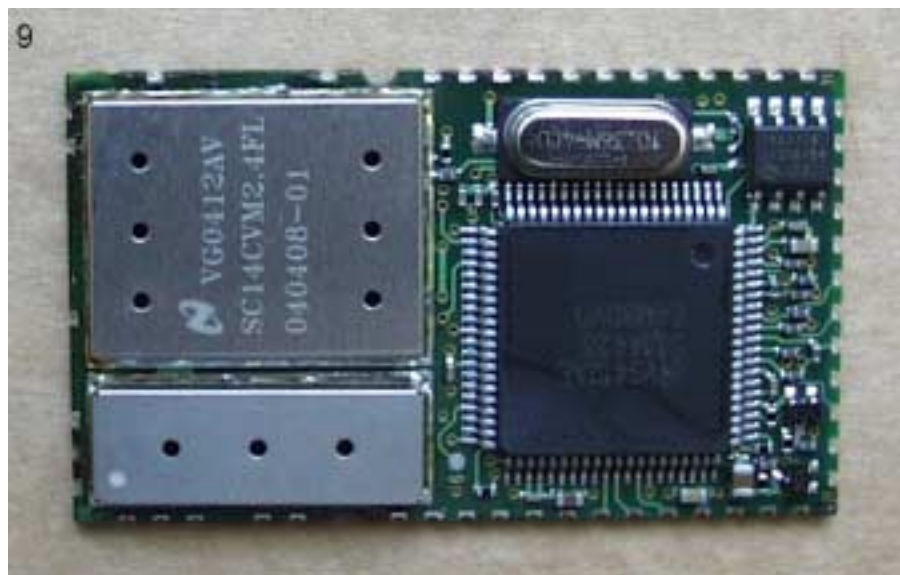
June 29, 2005

Test report # : 21201-01-CC-1-a

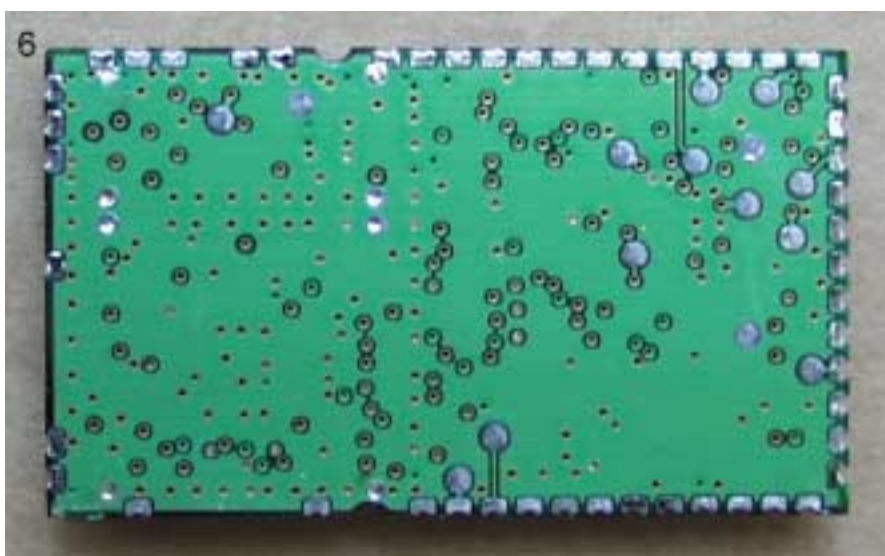
1.2 DEC TMODULE DETAILS :

1.2.1 NS RADIO MODULE SC14CVM2.4R4C1 PHOTOGRAPHS :

1.2.1.1 *Top view*



1.2.1.2 *Bottom view*





INTERNAL PHOTOS

Written by : O. ROY

June 29, 2005

Test report # : 21201-01-CC-1-a

1.2.1.3 Top view without shielding cover





INTERNAL PHOTOS

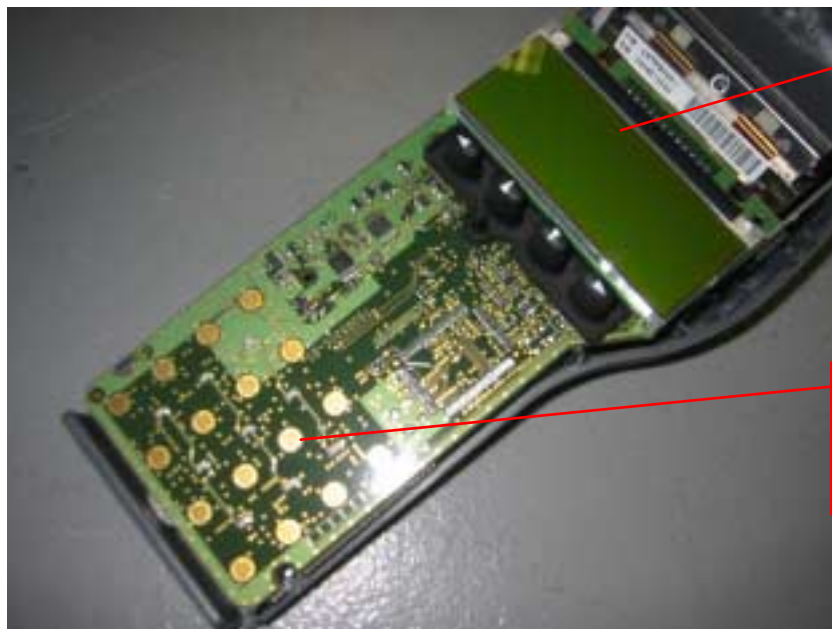
Written by : O. ROY

June 29, 2005

Test report # : 21201-01-CC-1-a

1.3 PORTABLE DEVICE DETAILS :

1.3.1 (TOP COVER REMOVED)



LCD DISPLAY

Mother board (CPU)
Solder side, showing the
Keys locations



3 SIMM board



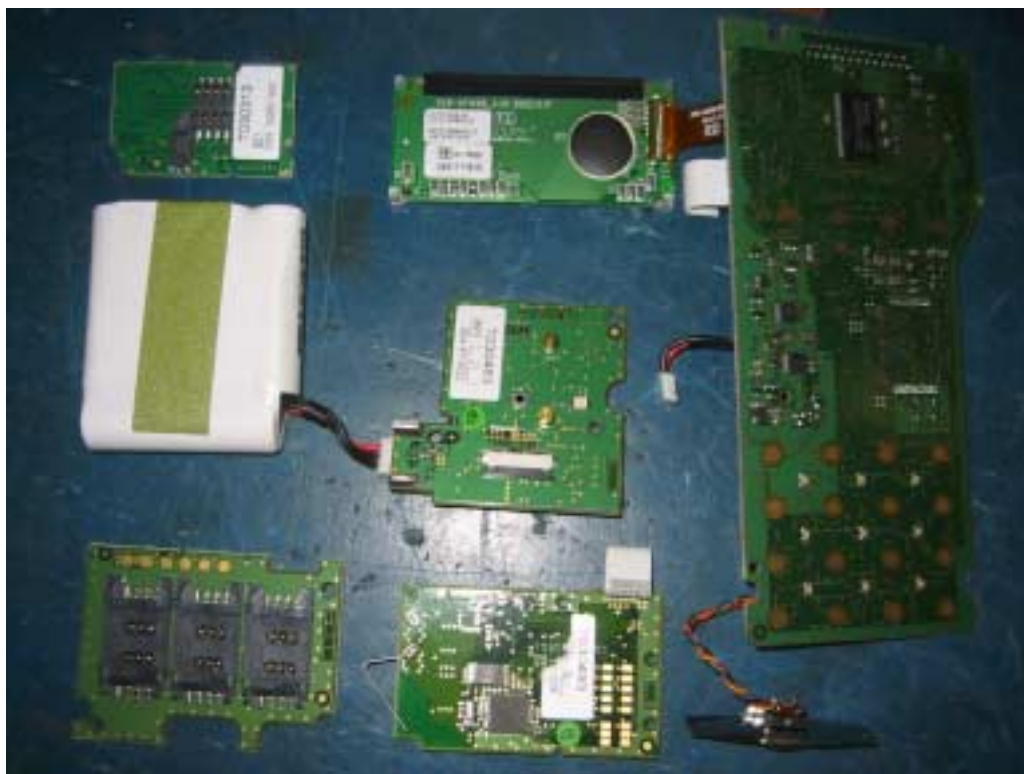
INTERNAL PHOTOS

Written by : O. ROY

June 29, 2005

Test report # : 21201-01-CC-1-a

1.3.2 ALL BOARDS GENERAL VUE





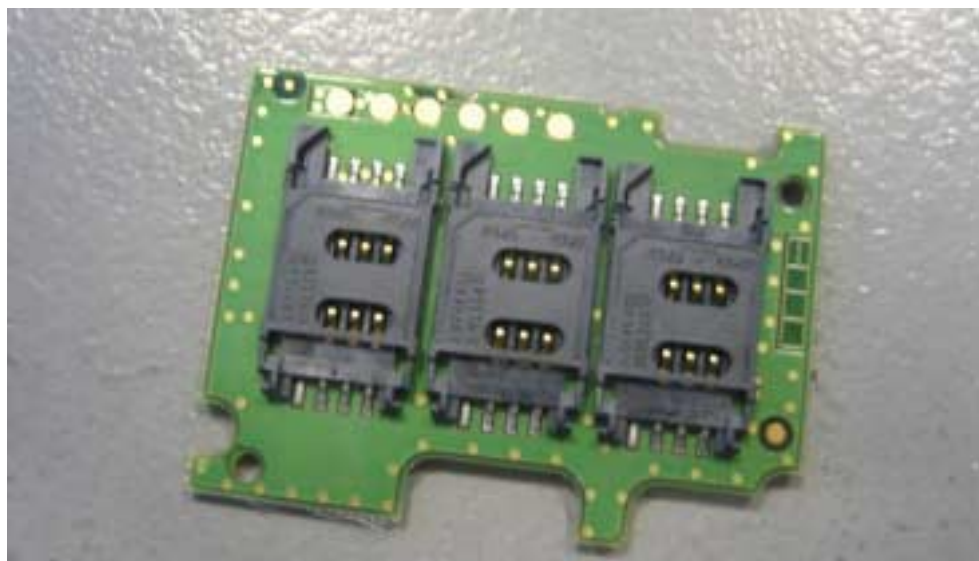
INTERNAL PHOTOS

Written by : O. ROY

June 29, 2005

Test report # : 21201-01-CC-1-a

1.3.3 3 SIMM BOARD COMPONENTS VIEW



1.3.4 3 SIMM BOARD SOLDER SIDE VIEW



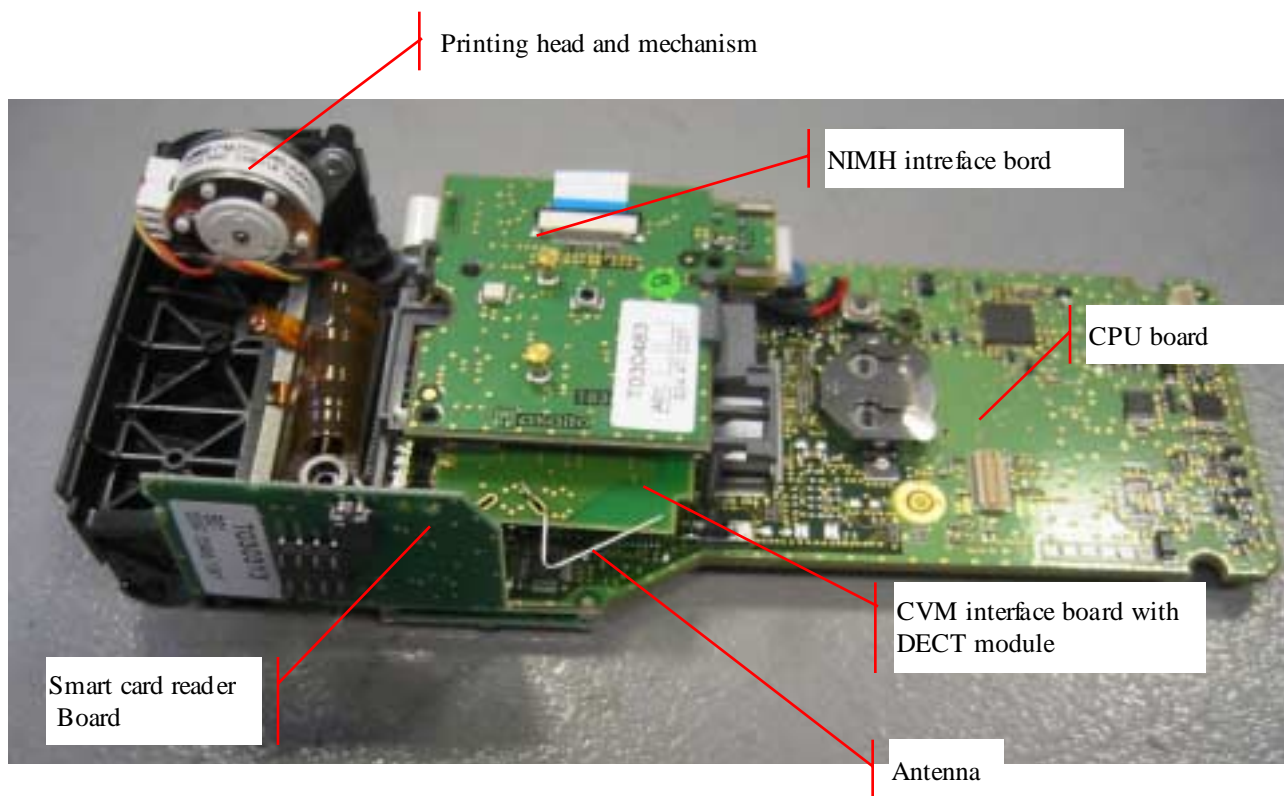


INTERNAL PHOTOS

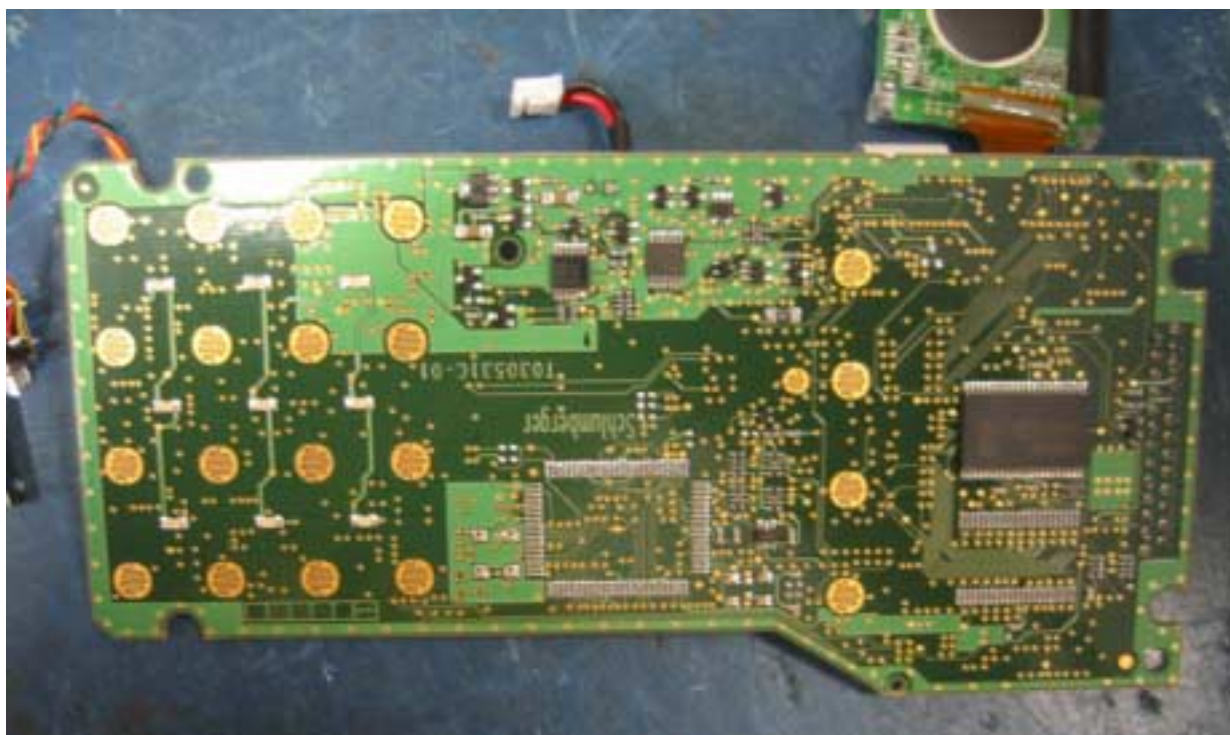
Written by : O. ROY

June 29, 2005

Test report # : 21201-01-CC-1-a



1.3.5 CPUBOARD SOLDER SIDE





INTERNAL PHOTOS

Written by : O. ROY

June 29, 2005

Test report # : 21201-01-CC-1-a

1.3.6 CPUBOARD COMPONENT SIDE





INTERNAL PHOTOS

Written by : O. ROY

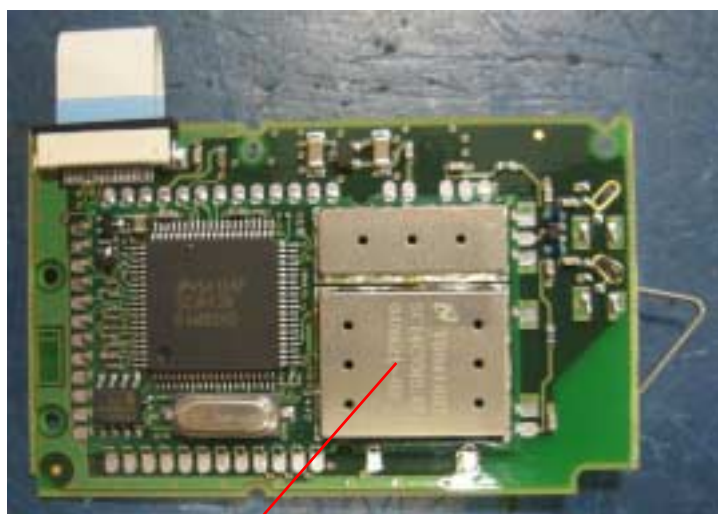
June 29, 2005

Test report # : 21201-01-CC-1-a

1.3.7 CVMINTERFACEBOARD WITH DECT MODULE



Antenna



DECT Module



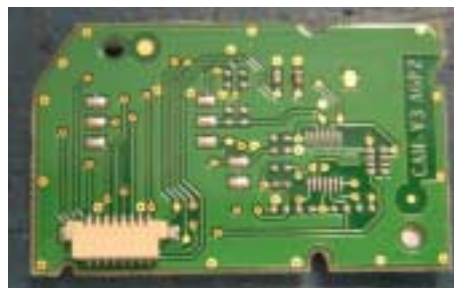
INTERNAL PHOTOS

Written by : O. ROY

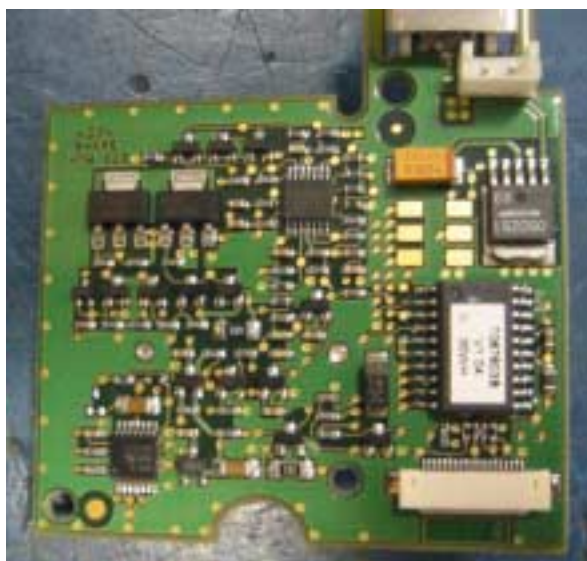
June 29, 2005

Test report # : 21201-01-CC-1-a

1.3.8 SMARTCARD READER BOARD



1.3.9 NIMH INTERFACE BOARD





INTERNAL PHOTOS

Written by : O. ROY

June 29, 2005

Test report # : 21201-01-CC-1-a

1.3.10 BATTERIES AND MAGNETIC READER





INTERNAL PHOTOS

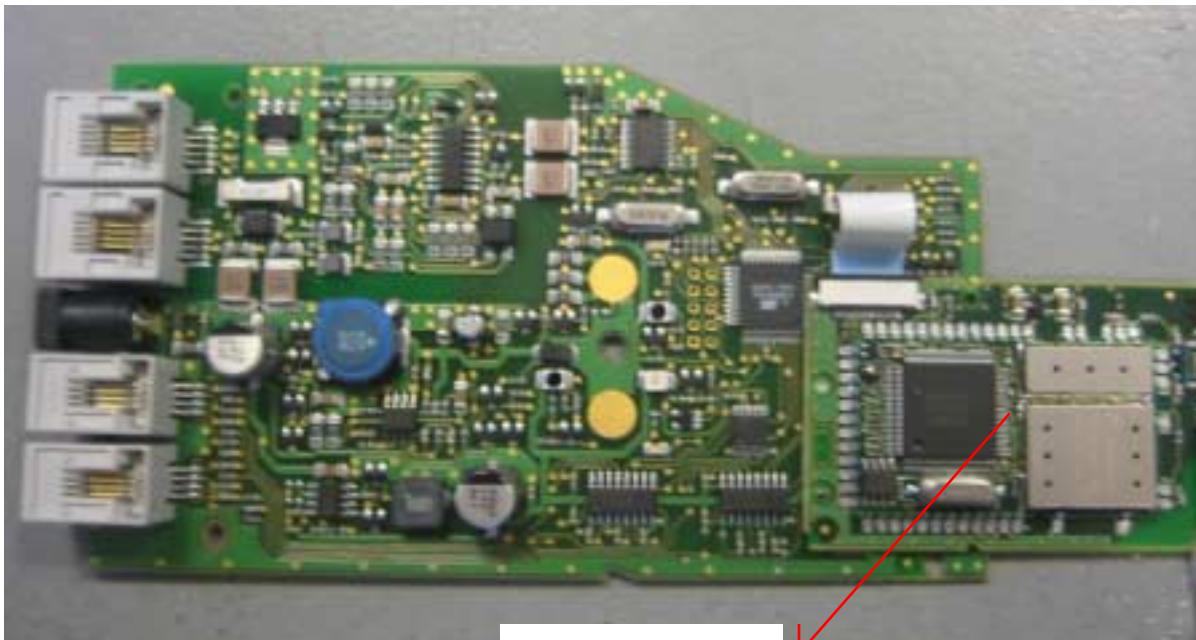
Written by : O. ROY

June 29, 2005

Test report # : 21201-01-CC-1-a

1.4 BASE DEVICE DETAILS :

Mother board with CVM interface board with DECT module



CVM interface board
with DECT module



INTERNAL PHOTOS

Written by : O. ROY

June 29, 2005

Test report # : 21201-01-CC-1-a

Mother board solder side

