



BHS-00A0

Bluetooth Headset



User Guide

User Guide

Model No.: BHS-00A0

Description: Bluetooth Headset

COPYRIGHT & TRADEMARKS

Copyright © 2004 Online Technologies Ltd., All Rights Reserved. Sapphire is a trademark of Online Technologies Ltd. Microsoft, Windows, and the Windows logo are registered trademarks of Microsoft Corporation. All other trademarks and brand names are the property of their respective proprietors.

LIMITED WARRANTY

Online guarantees that every BHS-00A Series Bluetooth Wireless Headset from physical defects in material and workmanship for one year from the date of purchase, when used within the limits set in the Specifications section of this User Manual. If the product proves defective during this warranty period, call Online Technical Support in order to obtain a Return Authorization number. When returning a product, mark the Return Authorization number clearly on the outside of the package and include a copy of your original proof of purchase. Return requests cannot be processed without proof of purchase. Online Technologies Ltd. makes no warranty or representation, expressed, implied, or statutory, with respect to its products or the contents or use of this documentation and all accompanying software, and specifically disclaims its quality, performance, merchantability, or fitness for any particular purpose. Online Technologies Ltd. reserves the right to revise or update its products, software, or documentation without obligation to notify any individual or entity.

Online Technologies Ltd

UNIT 5, 9F, METROPOLE SQUARE, #2, ON YIU ST
SHATIM NT, HONG KONG

Tel: +852-2636-1100 Fax: +852-2636-1055

URL: <http://www.onlinetek.com.hk>

Email: service@onlinetek.com.hk

Content

Introduction 2

Product Feature 2
Product Specification 2

Main Machine Interface 5

[Button Control Interface specification](#) 5
Power/Battery LED Indicator Specification 7
Bluetooth State LED Indicator Specification 7
Sound Indicator Specification 8
Battery Specification 8

Operation Specification 9

Pairing to Your Bluetooth Cellular Phone 9
Answer an incoming voice call. 9
Hang up an ongoing voice call. 10
Disconnect an established RFCOMM Connection 10.
...Adjust the Volume. 10
...Audio Transfer from Headset to AG. 10
...Audio Transfer from AG to Headset 10
...Last Number Redial in HF mode.11
...Reject Incoming Call in HF mode.11

Chinese User Manual 12

1. Introduction

The Online BHS-00A0 Bluetooth Headset (Bluetooth 1.1) is equipped with a wireless connection, giving you hands-free control over your mobile phone without the need for obtrusive cables or wires. Designed for both looks and comfort, the earpiece fits inconspicuously in either ear, allowing you convenient and discreet access to all basic call controls-whether your phone is stashed away in your golf bag or lying on a table nearby.

Product Feature

- Authentic power on/off functionality agreed by the area of restricted microwave emission
- Paired device up to 5, one at a time
- Unique ring indication using both LED and ring tone
- Auto-switch between Handsfree and Headset profiles
- Fashionable and stylish necklace design catering to diversified outfit

Product Specification

Bluetooth

- Wireless Interface: Compliant with Bluetooth Spec. Version 1.1
- Bluetooth Protocol Stack Supported: L2CAP, RFCOMM, SDP
- Bluetooth Profiles Supported: GAP, HandsFree, Headset
- Frequency: 2.4 GHz license-free ISM band
- Range (open environment): Up to 10 meters range (30ft)
- Radio Receiver Sensitivity: < -84 dBm at 1e-3 BER
- Compatibility: Sony Ericsson T39, T68, T68i, P800, T610, Z600, Nokia 6310, 6310i, 8910, 8910i, 3650, 6600, N-Gage and devices supporting Headset or Handsfree profiles
- Max. Paired device: Up to 5 at one time

Power

- Adaptor: 90V-240VAC, 50/60Hz, 5V/300~800mA
- Battery Type : LI-Polymer; 4.2V/120mAH Idle: 35mA
- Talk Time : Up to 3 hours
- Standby Time: Up to 72 hours
- Charging Time: Less than 2.5 hours

Voice Characteristics

- Frequency Response: 0.2 to 3.4 KHz
- Signal to Noise Ratio: Larger than 60dB
- Idle Channel Noise Selective: -70 dBm0
- Crosstalk of 1020 Hz @ 0dBm0: -75 dB
- Receive Gain Control: -21 dB to 0 dB
- Receiver Gain Control Step Size: 3dB

Man Machine Interface

- Talk Button : Multi-function button for controlling Bluetooth headset
- Volume Up Button : 7 volume levels adjustment
- Volume Down Button : 7 volume levels adjustment
- Power on/off Switch : Turn on/off system power
- Power/Battery state LED indicator: Indicator of battery full, low and charging.
- Bluetooth state LED indicator: Indicator of Bluetooth operation state.

Regulatory

- Safety: EN60950
- FCC: FCC part 15.209, 15.247, 15.249
- ETSI: ETS 300328, ETS 300826
- **Bluetooth Qualification**
 - General Access Profile (GAP)
 - Headset profiles
 - Handsfree profiles

Environment

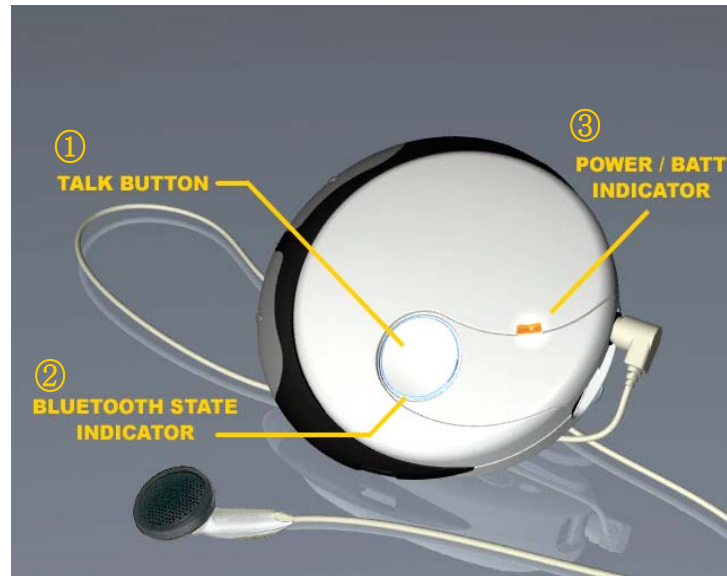
- Storage: -20°C to 70°C; 10% to 90% RH
- Operating: 0°C to 55°C; 15% to 85% RH

Dimensions

- Size: 47*46*13 mm (L*W*H)
- Weight: 25 g

2.Man Machine Interface

Button Control Interface specification



①Talk Button

Short Click:

- You can establish an RFCOMM with a paired AG if the headset is in standby mode.
- You can answer an incoming call.
- You can hang up an active call.

Press and hold for longer than 2 seconds:

- You can force to disconnect the established RFCOMM connection.
- You can enter pairing mode if the headset is in standby mode.
- You can exit pairing mode if the headset is in pairing mode.

Press and hold for longer than 5 seconds:

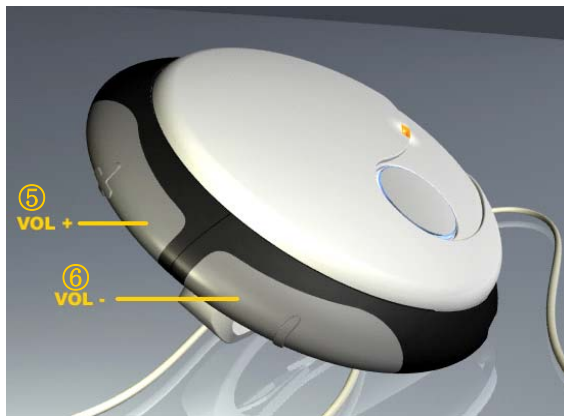
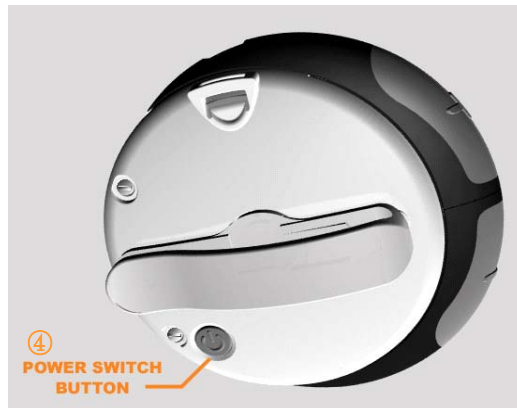
- You can send "Last Number Redial" request to AG if RFCOMM is established and the running mode is Handsfree.
- You can reject the incoming call if the headset is running in Handsfree mode and there is an incoming call.

②Bluetooth state LED indicator

Indicator of Bluetooth operation state.

③Power/Battery state LED indicator

Indicator of battery full, low and charging.



④ Power Switch Button

Press and hold for longer than 2 seconds:

- You can power on the headset if it is currently OFF.
- You can power off the headset if it is currently ON.

⑤ Volume Up Button(VOL+): 7 volume levels adjustment

Short Click:

- Volume Up for 3dB level

Press and Hold for longer than 2 seconds:

- Adjust the volume to maximum level.

⑥ Volume Down Button(VOL-) : 7 volume levels adjustment

Short Click:

- Volume Down for 3dB level

Press and Hold for longer than 2 seconds:

- Adjust the volume to minimum level.

⑦ Phone Jack:

Plugging in the Earphone

⑧ DC Jack:

Charging

LED Indicator Specification

System state	Flashing Pattern
Pairing	Blue LED: ON(300ms), OFF(300ms)
Standby	Blue LED: ON(100ms), OFF(4900ms)
Ring	Blue LED: ON(100ms), OFF(100ms)
Connected	Blue LED: ON
Power ON/OFF	Red LED: flash 6 times when power is on and flash 1 times when the power is off.
Battery Low	Red LED: ON (100ms), OFF(4000ms)
Battery Charging	Red LED: ON
Battery Full	Red LED: OFF

Sound Indicator Specification

Action	Sound played
1.Press Talk button for 2 seconds	2 beeps.
2.Press Talk button for 5 seconds	3 beeps
3.Volume level reaches the maximum or minimum.	2 beeps.
4.Press Talk button	1 beep.

3.Operation Specification

Charging the Battery

- I. Connect the charger cable to the headset.
- II. Connect the charger to an AC wall outlet. The red indicator light is displayed during charging. Charging the battery fully takes between 1 and 2 hours, depending on the charger.
- III. When the battery is fully charged, the red indicator light to die out. Disconnect the charger from the AC wall outlet and the headset.

Note : The charging LED (red color LED) may not be turn on right after the charger is plug in if the headset was not in use for a long period of time – this is due the over-discharging of the battery that is not in use for a long period of time. User should expect to see the charging LED be turn on after about 10 minutes.

Switch the Headset On/Off

To Switch ON : Press and hold the **power key** for 2 seconds. The headset Do-Mi-So beeps and the red indicator light start blinking about six times. After, the blue indicator light blinking continues until the headset is connected to your phone.

To Switch OFF : Press and hold the **power key** for 2 seconds. The headset So-Mi-Do beeps and the red indicator light is displayed briefly.

Pairing with Bluetooth Cellular Phone

You must pair to your Bluetooth cellular phone at first time before using the Bluetooth wireless headset. (NOTE: Please refer to the User Manual about Bluetooth connection of your cellular phone.)

Please follow the instruction below to pair the headset of your Bluetooth phone:

1. At first, press and hold the POWER switch button for at least 2 seconds when the Headset is in power OFF mode. Once the Headset is powered on, the POWER/BATT LED will flash for 3 times and the system will automatically enter **Standby mode**. To POWER OFF: Press and hold the POWER switch button for at least 2 seconds when the Headset is in power ON mode. (NOTE: if there is a charger plugged in, the system won't be able to be powered off.)
2. Follow the operation instruction for your Bluetooth cellular phone to start pairing process.
The display of phone will indicate that it found the Bluetooth devices, "BHS-00A0" should be included in the list. Control the joystick to select the BHS-00A0 Bluetooth headset to pair, and then press the select key.
3. The display of phone will ask you a passkey for pairing; please type the default passkey "**1234**" and then press the ok key to start pairing.
4. When the pairing process is finished successfully, you could see the result of

BHS-00A0 added to the list. (NOTE: Some Bluetooth phone can connect automatically without pairing, and the headset can work just to select the Bluetooth connection. Please refer to the User Manual about Bluetooth connection of your cellular phone.)

Voice Dialing

When no call is in progress, press and hold the TALK button until you hear a tone that indicates that you can say the desired name ("voice tag"). Say the voice tag. The phone plays the voice tag and dials the related phone number.

You can also active voice dialing with your phone. For details on voice dialing, see your phone's user's guide. Note that this functionality is only available if your phone supports voice dialing.

Answer an incoming voice call

1. The Headset plays a RING tone whenever there is an incoming call.
2. Press the TALK button will answer the incoming call.

Hang up an ongoing voice call.

1. The Headset has an active call.
2. Press the TALK button will hang up the call.

Disconnect Connection via Headset.

1. The Headset has an RFCOMM connection with an cell phone.
2. Press and hold TALK button for 2 seconds will disconnect the connection.

Disconnect Connection via Cell Phone.

You can disconnect the headset from your phone when, for example, you want to use another Bluetooth device with your phone.

- Switch off the headset. **OR:**
- Disconnect the headset in the phone's Bluetooth menu. **OR:**
- Move the headset more than 10 meters away from the phone.

The headset is also disconnected if its battery becomes flat.

Note that you do not need to delete the pairing with the headset to disconnect it. When you reconnect a paired headset, you will not be asked for its passkey.

Adjust the Volume.

1. Make sure the Headset has an RFCOMM connection with a cell phone (in HandsFree mode) OR there is an SCO connection with an AG (in Headset mode).
2. Press the Volume UP/ Volume Down Button to adjust the volume.
3. To jump to the maximum volume, press and hold Volume Up button for 2 seconds.
4. To jump to the minimum volume, press and hold Volume Down button for 2 seconds.

Audio Transfer from Headset to cell phone

Make sure the Headset is on an active call.
Press and hold Talk button for 2 seconds.

Audio Transfer from cell phone to Headset

Make sure there is an active call.
Press Talk button of the Headset.

Last Number Redial in HF mode.

1. Make sure the Headset has an RFCOMM connection with an cell phone (in HandsFree mode) OR there is an SCO connection with an AG (in Headset mode).
2. Press and hold the TALK button for 5 seconds will request the Cell phone AG to perform the last number redial functionality. The feature is only supported in HF mode.

Reject Incoming Call in HF mode.

1. The Headset plays a RING tone whenever there is an incoming call.
2. Press and hold the TALK button for 5 seconds will answer the incoming call.

Using the Headset with several cell phones.

Before the headset can be used with your phone, the phone has to be paired with the headset. The headset can be paired with up to 5 phones but connected only one phone at a time.

The phone that was last used with the headset is called the “last used phone”. If the headset is switched on within 10 meters of several paired phones, the headset will try to connect to the “last used phone” within a few seconds.

If the headset cannot connect to the “last used phone”(because, for example, it is switched off its user rejects the connection), the headset tries to connect to the other used phones within a few seconds.

Reset the Headset.

You can reset the headset to the original settings to, for example, change the default user of the headset.

When you reset the headset, all of its settings, including pairing information, are cleared.

To reset the headset: Press and hold the TALK button for 10 seconds. After the headset has been reset, the headset beeps twice and power off.

FCC Statement

This equipment complies with FCC radiation exposure limits set forth for an uncontrolled environment. End users must follow the specific operating instructions for satisfying RF exposure compliance. This transmitter must not be co-located or operating in conjunction with any other antenna or transmitter. Notice: Any changes or modification not expressly approved by the party responsible could void the user's authority to operate the device.