



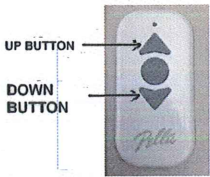
Insynctive® SINGLE CHANNEL REMOTE

QUICK START GUIDE



1. Get Started

- Install INSYNCTIVE SHADE OR BLIND following Quick Start Guide provided with the product.



4. Test SHADE or BLIND

- Press the UP button to move the shade to the fully open position.
- Press the DOWN button to move the shade to the down position.

NOTE: Verify that the fabric and bottom rail do not rub or interfere with window, wall, or other obstructions. See SHADE or BLIND Product Guide for instructions on setting up and adjusting SHADE or BLIND.

⚠ WARNING

Failure to adhere to the warnings above may result in death, serious injury and/or loss of valuables.

- Keep battery and other small parts out of reach of children. If swallowed, immediately seek medical help.

Read the complete Product Guide for additional warnings and information.



This Quick Start Guide is intended only to provide an overview of the product and its use. Before using this product, read the complete Product Guide and warnings.



Scan the QR Code or visit pella.com/InsynctiveSingleChannelRemote for complete Product Guide and warnings, instructional videos and other Insynctive quick tips.



2. Prepare SINGLE CHANNEL REMOTE

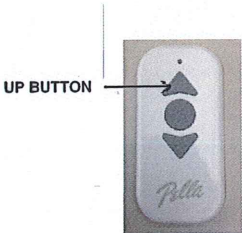
- Slide the battery cover in the direction of the arrow.
- Remove battery tab.
- Ensure battery is fully seated.
- Slide the battery cover back into closed position.

WHAT'S INCLUDED:

SINGLE CHANNEL REMOTE: REMOTE is used to operate one or more INSYNCTIVE SHADES AND BLINDS. REMOTE is also used to teach up to three custom setpoints to INSYNCTIVE SHADES AND BLINDS. QUICK START GUIDE, CR2032 BATTERY

WHAT'S REQUIRED:

INSYNCTIVE SHADE OR BLIND (required — sold separately): INSYNCTIVE SHADES AND BLINDS can be automatically raised and lowered to improve the comfort and convenience of your home.



3. Sync REMOTE to SHADE or BLIND

- For ROOMSIDE SHADES AND BLINDS
 - Pull shade bottom rail downward at least six inches to activate the shade.
 - Press and hold UP button on REMOTE until shade completes a quick up/down motion and then moves back to the top, fully open position.

For DESIGNER BETWEEN THE GLASS SHADES AND BLINDS

- Hold Remote to Top Cover approximately 6" from the end to activate the shade. The shade will complete a quick up/down motion to acknowledge it is activated.
- Press and hold UP button on REMOTE until shade completes a quick up/down motion.

Have a home automation or security system? For instructions on how to sync a Pella Insynctive Shade or Blind, visit pella.com/InsynctiveHomeAutomation.

NEED HELP WITH THE STEPS ABOVE? VISIT PELLA.COM/XXX OR CALL XXX-XXX-XXXX.

FOR TROUBLESHOOTING INFORMATION AND VIDEOS, VISIT PELLA.COM/INSYNCTIVESINGLECHANNELREMOTE.

READ THE FULL WARRANTY AND REGISTER YOUR INSYNCTIVE PRODUCTS AT XXXXX.

FCC Compliance and Industry Canada

This equipment has been tested and found to comply with the limits for Class B digital devices, pursuant to Part 15 of the FCC Rules. These limits are designed to provide reasonable protection against harmful interference in a residential installation. This equipment generates **uses** and can radiate radio frequency energy and, if not installed and used in accordance with the instruction manual, may cause harmful interference to radio communications. However, there is no guarantee that interference will not occur in a particular installation. If this equipment does cause harmful interference to radio or television reception, which can be determined by turning the equipment off and on, the user is encouraged to try to correct the interference by one or more of the following measures:

- Reorient or relocate the receiving antenna.
- Increase the separation between the equipment and receiver.
- Connect the equipment to an outlet on a different circuit from the receiver.
- Consult the dealer or an experienced radio/TV contractor for help.

Changes or modifications not expressly approved by Pella Corporation could void the user's authority to operate the equipment.

This device complies with Industry Canada license-exempt RSS standard(s). Operation is subject to the following two conditions: (1) this device may not cause interference, and (2) this device must accept any interference, including interference that may cause undesired operation of the device.

Cet appareil est conforme avec Industrie Canada exempts de licence standard RSS. L'opération est soumise aux deux conditions suivantes: (1) cet appareil ne peut causer d'interférences, et (2) cet appareil doit accepter toute interférence, y compris les interférences qui peuvent causer un mauvais fonctionnement de l'appareil.

FCC ID: SO7-206A0000
IC: 11009A-206A0000

© 2014 Pella Corporation

integer Gayle-OBrien-C02L80FZFFRR

Client: **Pella**
Job #: **PELLDS13006**
Job Name: **Garage Door Quick Guide**

File Name: **LDS13006_Insynctive_GarageDoorSensor_Quick_Guide.indd**

To Printer: --

Trim: **3.5" x 5.25"**
Bleed: **3.75" x 5.5"**
Print Scale: **None**
Date: **1-15-2014 3:50 PM**

Colors: 

Links: Garage Door Sensor.ai (18.07%), Insynctive Garage Door Sensor_Logo.ai (92.48%), Insynctive Garage Door Sensor_Icon.ai (109.99%), Bridge_Angle.eps (33.6%), Garage Door with Sensor.eps (23.54%), Garage Door Sensor TILT.
eps (19.22%)

FINAL TO CLIENT (RED)



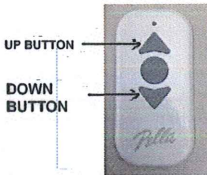
Insynctive® SINGLE CHANNEL REMOTE

QUICK START GUIDE



1. Get Started

- Install INSYNCTIVE SHADE OR BLIND following Quick Start Guide provided with the product.



4. Test SHADE or BLIND

- Press the UP button to move the shade to the fully open position.
- Press the DOWN button to move the shade to the down position.

NOTE: Verify that the fabric and bottom rail do not rub or interfere with window, wall, or other obstructions. See SHADE or BLIND Product Guide for instructions on setting up and adjusting SHADE or BLIND.

⚠ WARNING

Failure to adhere to the warnings above may result in death, serious injury and/or loss of valuables.

- Keep battery and other small parts out of reach of children. If swallowed, immediately seek medical help.

Read the complete Product Guide for additional warnings and information.



This Quick Start Guide is intended only to provide an overview of the product and its use. Before using this product, read the complete Product Guide and warnings.



Scan the QR Codes or visit pella.com/InsynctiveSingleChannelRemote for complete Product Guide and warnings, instructional videos and other Insynctive quick tips.



2. Prepare SINGLE CHANNEL REMOTE

- Slide the battery cover in the direction of the arrow.
- Remove battery tab.
- Ensure battery is fully seated.
- Slide the battery cover back into closed position.

WHAT'S INCLUDED:

SINGLE CHANNEL REMOTE: REMOTE is used to operate one or more INSYNCTIVE SHADES AND BLINDS. REMOTE is also used to teach up to three custom selpoints to INSYNCTIVE SHADES AND BLINDS.
QUICK START GUIDE, CR2032 BATTERY

WHAT'S REQUIRED:

INSYNCTIVE SHADE OR BLIND (required — sold separately): INSYNCTIVE SHADES AND BLINDS can be automatically raised and lowered to improve the comfort and convenience of your home.



3. Sync REMOTE to SHADE or BLIND

- For ROOMSIDE SHADES AND BLINDS
- Pull shade bottom rail downward at least six inches to activate the shade.
 - Press and hold UP button on REMOTE until shade completes a quick up/down motion and then moves back to the top, fully open position.

For DESIGNER BETWEEN THE GLASS SHADES AND BLINDS

- Hold Remote to Top Cover approximately 6" from the end to activate the shade. The shade will complete a quick up/down motion to acknowledge it is activated.
- Press and hold UP button on REMOTE until shade completes a quick up/down motion.

Have a home automation or security system? For instructions on how to sync a Pella Insynctive Shade or Blind, visit pella.com/InsynctiveHomeAutomation.

NEED HELP WITH THE STEPS ABOVE? VISIT PELLA.COM/XXX OR CALL XXX-XXX-XXXX.

FOR TROUBLESHOOTING INFORMATION AND VIDEOS, VISIT PELLA.COM/INSYNCTIVESINGLECHANNELREMOTE.

READ THE FULL WARRANTY AND REGISTER YOUR INSYNCTIVE PRODUCTS AT XXXXX.

FCC Compliance and Industry Canada

This equipment has been tested and found to comply with the limits for Class B digital devices, pursuant to Part 15 of the FCC Rules. These limits are designed to provide reasonable protection against harmful interference in a residential installation. This equipment generates **uses** and can radiate radio frequency energy and, if not installed and used in accordance with the instruction manual, may cause harmful interference to radio communications. However, there is no guarantee that interference will not occur in a particular installation. If this equipment does cause harmful interference to radio or television reception, which can be determined by turning the equipment off and on, the user is encouraged to try to correct the interference by one or more of the following measures:

- Reorient or relocate the receiving antenna.
- Increase the separation between the equipment and receiver.
- Connect the equipment to an outlet on a different circuit from the receiver.
- Consult the dealer or an experienced radio/TV contractor for help.

Changes or modifications not expressly approved by Pella Corporation could void the user's authority to operate the equipment.

This device complies with Industry Canada license-exempt RSS standard(s). Operation is subject to the following two conditions: (1) this device may not cause interference, and (2) this device must accept any interference, including interference that may cause undesired operation of the device.

Cet appareil est conforme avec Industrie Canada exempts de licence standard RSS. L'opération est soumise aux deux conditions suivantes: (1) cet appareil ne peut causer d'interférences, et (2) cet appareil doit accepter toute interférence, y compris les interférences qui peuvent causer un mauvais fonctionnement de l'appareil.

FCC ID: SO7-206A0000
IC: 11009A-206A0000

© 2014 Pella Corporation

integer Gayle-OBrien-C02L80FZFFRR

Client: **Pella**
Job #: **PELLDS13006**
Job Name: **Garage Door Quick Guide**

File Name: **LDS13006_Insynctive_GarageDoorSensor_Quick_Guide.indd**

To Printer: --

Trim: **3.5" x 5.25"**
Bleed: **3.75" x 5.5"**
Print Scale: **None**
Date: **1-15-2014 3:50 PM**

Colors: **Cyan**
Magenta
Yellow
Black

Links: **Garage Door Sensor.ai (18.07%), Insynctive_Garage_Door_Sensor_Logo.ai (92.48%), Insynctive_Garage_Door_Sensor_Icon.ai (109.99%), Bridge_Angle.eps (33.6%), Garage Door with Sensor.eps (23.54%), Garage Door Sensor TILT, eps (19.22%)**

FINAL TO CLIENT (RED)