

IP Wireless / Wired Camera
REMOTE PAN/TILT ROTATE
User Manual



Contents

1	WELCOME.....	-1-
1.1	Features.....	-1-
1.2	Packing list.....	-2-
1.3	Product view.....	-2-
1.3.1	Front View.....	-2-
1.3.2	Rear Panel.....	-3-
1.4	PC System Requirements.....	-4-
1.5	Hardware Instruction	-5-
1.6	Software installation.....	-5-
2	SOFTWARE OPERATION.....	-7-
2.1	IP Camera Tool.....	-7-
2.2	Camera Login.....	-10-
2.3	ActiveX Mode (For WEB Browser).....	-11-
2.3.1	For Visitor.....	-11-
2.3.2	For Operator.....	-13-
2.3.3	For Administrator.....	-14-
2.3.3.1	Multi-Device Settings.....	-14-
2.3.3.2	Network Settings.....	-16-
2.3.3.3	Other Service Settings.....	-20-
2.3.3.4	System.....	-23-
2.4	Server Push Mode.....	-28-
2.5	Sign in mobile phone.....	-29-
3	HOW TO USE.....	-29-
3.1	Step by step to use.....	-29-
3.2	Setting WIFI of IP Camera.....	-30-
3.3	Connected to the Internet through ADSL directly.....	-31-
3.4	Using a router to access the Internet	-31-
3.5	Static IP user.....	-32-
3.6	How to use DDNS.....	-33-
4	APPENDIX.....	-34-
4.1	Frequently Asked Questions.....	-34-
4.1.1	I have forgotten the administrator username and/or password.....	-34-
4.1.2	IP Address configuration.....	-34-
4.1.3	Network Configuration.....	-35-
4.1.4	No pictures Problems with Active X Controller.....	-35-
4.1.5	Problem with network bandwidth.....	-35-
4.1.6	For example: Register procedure from a DDNS web	-36-
4.1.7	Why pop-up the prompt fail to connect to the device.....	-38-
4.2	Default Parameters.....	-38-
4.3	Specification.....	-39-
5	OBTAINING TECHNICAL SUPPORT.....	-39-

1 WELCOME

This model IP Camera is an integrated wireless IP Camera solution. It combines a high quality digital Video Camera with network connectivity and a powerful web server to bring clear to your Desktop from anywhere on your local network or over the Internet.

The basic function of it is transmitting remote video on IP network. The high Quality video image can be transmitted with 30fps speed on the LAN/WAN by using MJPEG hardware compression technology.

This is based on the TCP/IP standard. There is a WEB server inside which could Support Internet Explore. Therefore the management and maintenance of your device become more simply by using network to achieve the remote configuration, start-up and upgrade firmware.

You can use this IP CAMERA to monitor some special places such as your home and your office. Also controlling and managing images are simple by clicking the website through The network.

NOTE: you can use the IP Camera Step by Step (details:3.1).

Features

- Powerful high-speed video protocol processor
- High-sensitivity 1/4" CMOS sensor
- Picture Total 300k Pixels
- Video Frame Rate:30fps(QVGA), 15fps(VGA)
- Resolution:640 x 480(VGA), 320 x 240(QVGA)
- Light Frequency:50Hz, 60Hz or Outdoor
- Optimized MJPEG video compression for transmission
- Multi-level users management and passwords definition
- Embedded Web Server for users to visit by IE
- Support wireless network (WiFi/802.11/b/g/n20MHz/n40MHz)mobile
- Supporting Dynamic IP(DDNS)and UPNP LAN and Internet(ADSL, Cable Modem)
- Giving alarm in cause of motion detection
- Supporting image snapshot
- Support multiple network protocols: HTTP, TCP/IP, UDP, STMP, DDNS, SNTP, DHCP, FTP
- Support remote system update

Advanced Features

Multi-Protocol support and Transportation

IP CAMERA supports Multi-Protocol such as TCP/IP, SMTP and HTTP. Sending the image to your mailbox automatically when the IP CAMERA is triggered.

Video Image PTZ function

Users can control the camera direction on the video image.

Motion Detection

You may use the internal Motion Detection function or external sensor to trigger images Recording and transportation. Alarm sensor input/output.

The detection sensor sends an alarm and records by itself when there is a fire or accident. A message as an email is sending to you by this sensor,(The input/output discreteness can be chosen)

DDNS support

Using it in the condition which including ADSL and IP change often is more convenient, because IP CAMERA provides dynamic DNS function.

Advanced User Management

Only allowing authorized users access to real-time images of IP Camera.

1.2 Packing List

Untie the packing and checking the items contained against the following list;

- Wireless IP Camera 1
- Wi-Fi Antenna 1
- DC Power Supply 1
- CD 1
- Network Cable 1
- Mounting bracket 1

NOTE: Contact us immediately in the case of any damaged or short of contents.

1.3 Product views

1.3.1 Front view



Figure 1.1

- 1 Sensitive Hole
- 2 Infrared LED
- 3 LENS CMOS sensor with fixed focus lens.
- 4 Network Indicator LED if there is network activity, the LED will blink.
- 5 Mic

1.3.2 Rear panel



Figure 1.2

I/O PINS: 1 Output(+5V) 2 Output 3 Alarm input 4 Input (GND)



Figure 1.2-1

I/O PINS: 1 Input (GND) 2 Alarm input 3 Output A 4 Output B

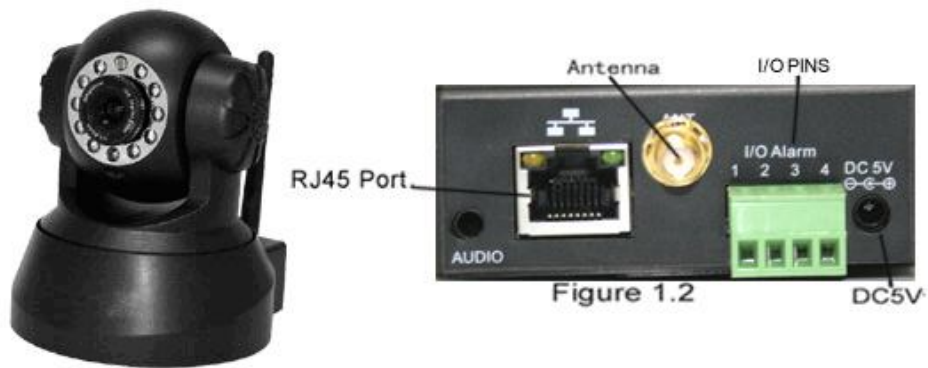


Figure 1.2-2

I/O PINS: 1 Output A 2 Output B 3 Alam input 4 Input (GND)



Figure 1.2-3

RESET BUTTON: press and hold down the RESET BUTTON (Figure 1.3 under pan) for 15 Seconds .Release the power button and IP Camera will be reset back to the factory default Parameter.

1.4 PC System Requirements

System configuration requirements :(Example for view four IP Camera)

CPU: 2.06GHZ or above **Memory:** 256M or above

Network Card: 10M or above **Display Card:**64M or above memory

Recommendable Operating system: Window2000 or Window XP or Vista

1.5 Hardware Instruction

Follow the steps below to set up your camera hardware. Make sure to follow each step carefully to ensure that the camera operates properly

- 1) Plug the network cable into the camera and then into your Cable/DSL router.
Plug the power adapter into the camera and then into the power outlet.

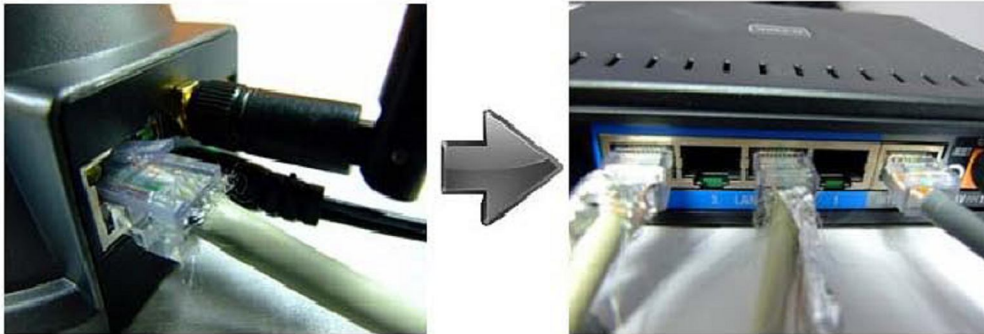


Figure 1.3

1.6 Software installation

Software installation is the key to the successful use of this product.

- 1 Open the CD, find the software as instruction;
- 2 Double click **setup.exe** and install the software as instruction.

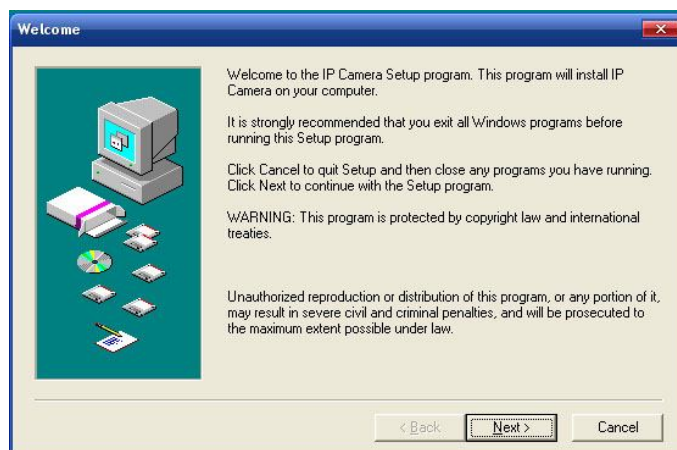


Figure 1.4

- 3 Only click **next**, you will complete the software installation.

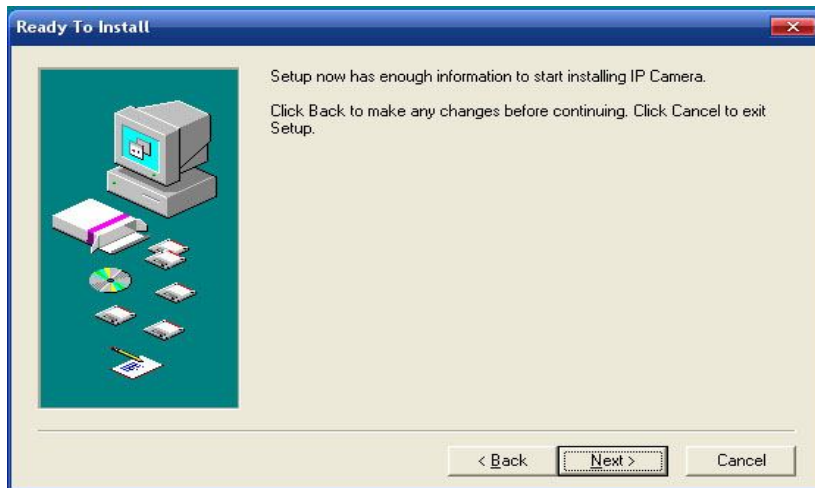


Figure 1.5

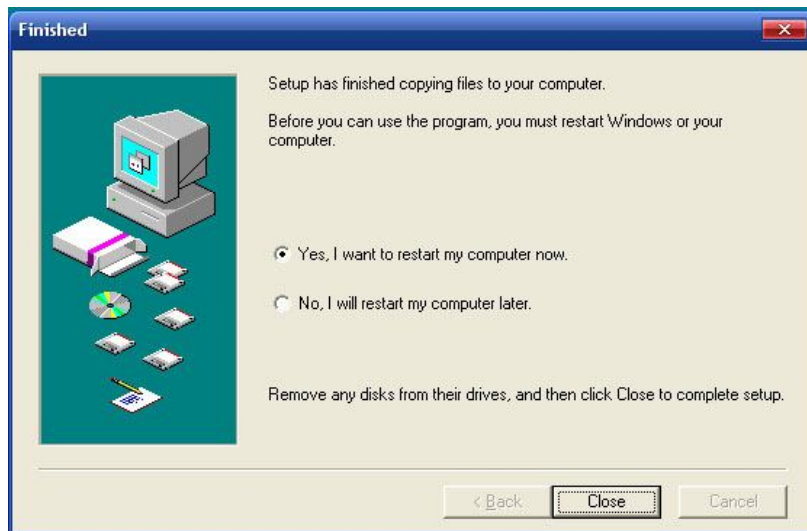



Figure 1.6



The computer restarts upon installation completion and an icon  appears on the Desktop automatically.

NOTE: Before installing and using the product, please read the following precautions carefully and make sure they are fully understood.

Use only the power adapter attached with the product .Use of unauthorized power adapter may cause damage to your IP Camera.

Do not touches the lenses of the IP Camera at will .The optimum focus range has been set before the IP Camera is delivered out of the factory. If you turn the lens, it may cause incorrect focus and vague images.

Do not turn the Pan/Tilt by force for it may cause damage to internal components of the Pan/Tilt.

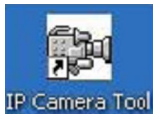
IP Camera terminal shall be installed in an indoor environment.

For firmware upgrading or connection with an external, refer to detailed instructions contained in the CD.

2 SOFTWARE OPERATION

2.1 IP Camera Tool

When the Device has been mounted properly, you can double click the Icon "IP Camera



Tool" and a dialog box as Figure 2.1 will pop up.

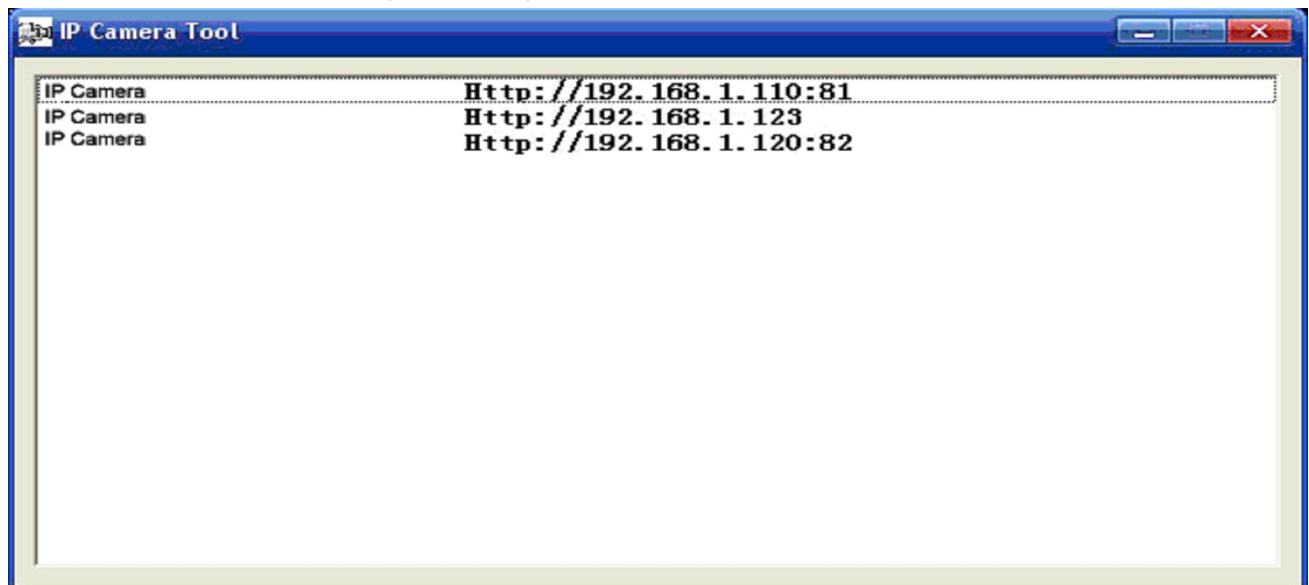


Figure 2.1

Note: The software searches IP Servers automatically over LAN.

There are 3 cases:

1. No IP Cameras found within LAN. After about 1 minute search, the Result Field will show "not found IP Server" and the program shut automatically.
2. IP Cameras have been installed within LAN. All the IP Cameras will be listed and the total number is displayed in the result field as shown in Figure 2.1
3. The IP Cameras installed within LAN do not share the same subnet with the monitoring PC. A prompt as shown in result field (prompt: Subnet doesn't match, double click to change!).

Click the left mouse button to choose the prompt and click the right mouse, choose **Network Configuration** to set the IP address of the Camera to the same subnet as LAN.

Five Options

Choose the IP Camera list and Click right mouse, there are five options ,Basic Properties, Network Configuration, Upgrade Firmware ,Refresh Camera List ,Flush Arp Buffer.

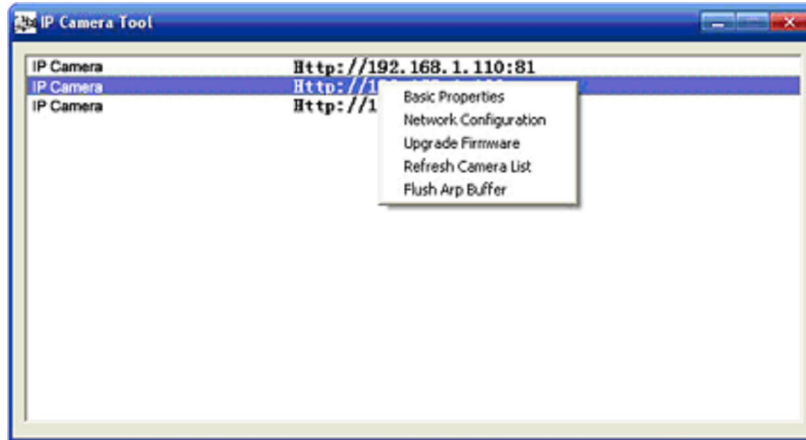


Figure 2.2

- **Basic Properties**

There are some device information in the Basic Properties, such as **Device ID**, **System Firmware Version**, **Web UI Version**.



Figure 2.3

- **Network Configuration**

In this page, you can configure the Network parameter.

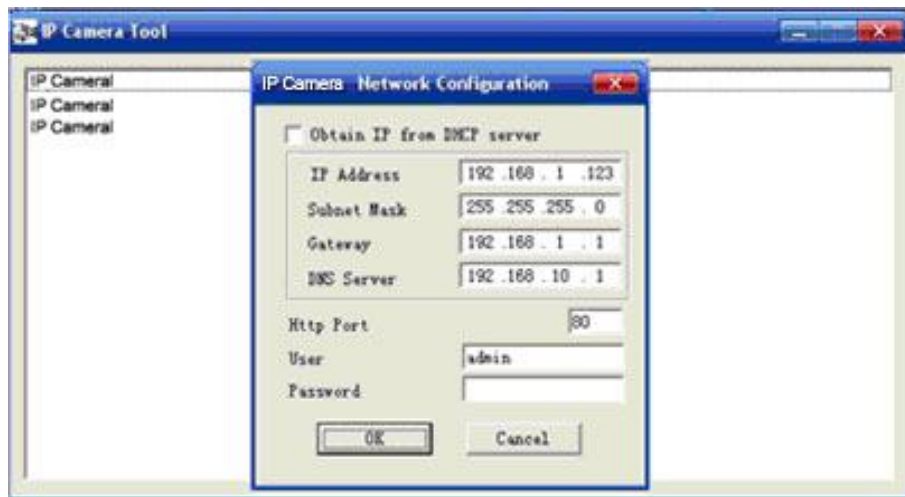


Figure 2.4

IP address: Fill in the IP address assigned and make sure it is in the same subnet as the gateway (i.e. the first three sections are the same)

Mask: The default subnet mask of the equipment is: 255.255.255.0

Gateway: Make sure it is in the same subnet with PC IP address .Default Gateway address is 192.168.0.1

DNS: IP address of IPS network provider.

Port: LAN port assigned for the equipment, usually 80

User & Password: Default administrator username/password: admin. No password

Enable **Using DHCP** the system will assign a reasonable IP address for your equipment. Only if your gateway supports DHCP (It is the case with most gateways).

NOTE: When the prompt “subnet doesn’t match, double click to change!” please set the IP Camera IP address once again.

● Upgrade Firmware

Enter the correct User and Password to upgrade system Firmware and Web UI.



Figure 2.5

- **Refresh Camera List**

Refresh camera list manually.

- **Flush Arp Buffer**

When cable network and wireless network of the device are fixed IP address. There is a problem you may encounter is can search the camera IP but can't open the camera web page. you may try to use Flush Arp Buffer.

2.2 Camera Login

You can access the camera through IP Camera Tool or IE directly.

- 1) Double click the IP address of the IP Camera listed (Figure 2.1).
- 2) To access the camera, start your web browser and type in the camera's IP address

Such as <http://192.168.1.123>



- 3) The Camera Login page pop-up.



Enter the user name and passport, click OK, and will show the below GUI:

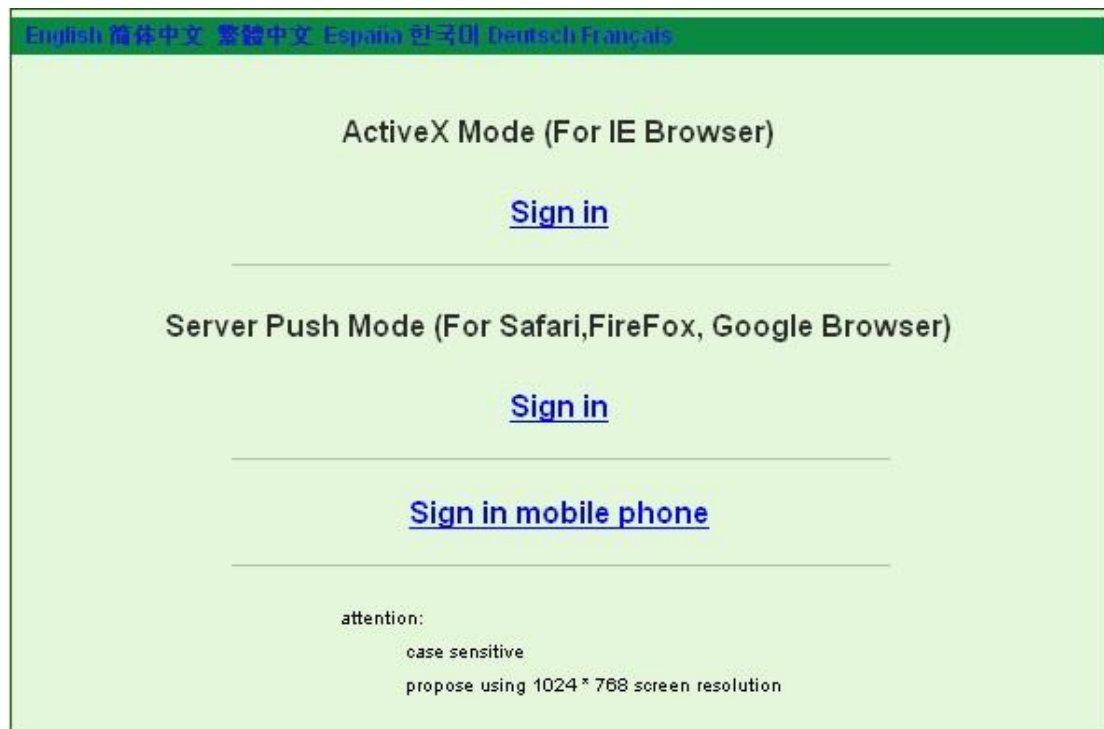


Figure 2.6

- (1) Active Mode(For IE Browser): available in IE6.0 or above explorer
- (2) "Server Push Mode": available in Firefox, Google explorer
- (3) "Sign in mobile phone": available in Mobile phone

2.3 ActiveX Mode (For WEB Browser)

2.3.1 For Visitor The status of 9 routes, as shown below.

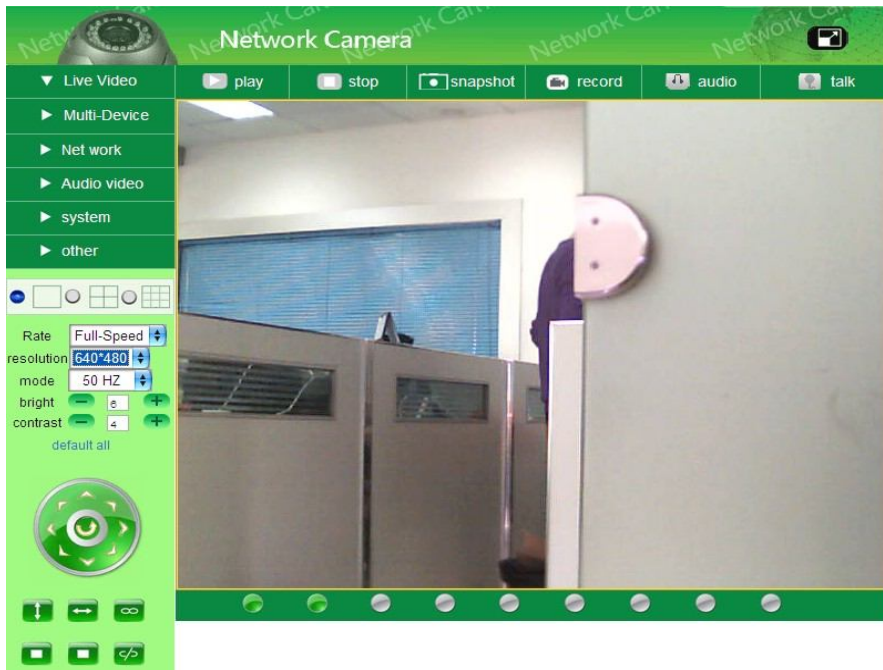

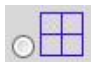

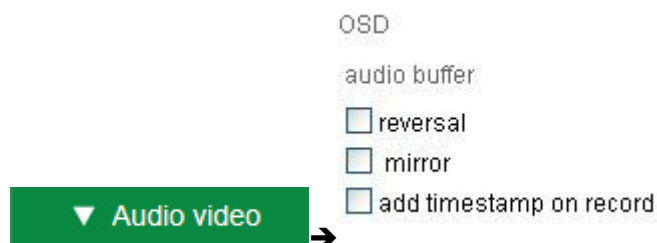


Figure 2.7

For example: if  is bright, the first route is on Detection (Motion Detection).

If you want to detect 4 views, need to click this icon 

If you want to detect 9 views, need to click this icon 




OSD: Display date and time on the video .You can disable the OSD function or choice Other color, (OSD: on-screen display)

Reversal: To see the reversal image


Mirror: To see the mirror image.

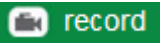

Add time stamp on record: Increase the video time stamp

PLAY: Click icon  into play mode,  is stop.

Snapshot: Click icon  to snap the picture.

AUDIO: Click icon  Camera MIC open, Local Voice input

TALK: Click icon  Camera Speaker open, Remote Voice Output

RECORD: Click icon  into REC mode,  is stop.

2.3.2 For Operator

When login as operator administrator, you can enter the IP Camera For Operator

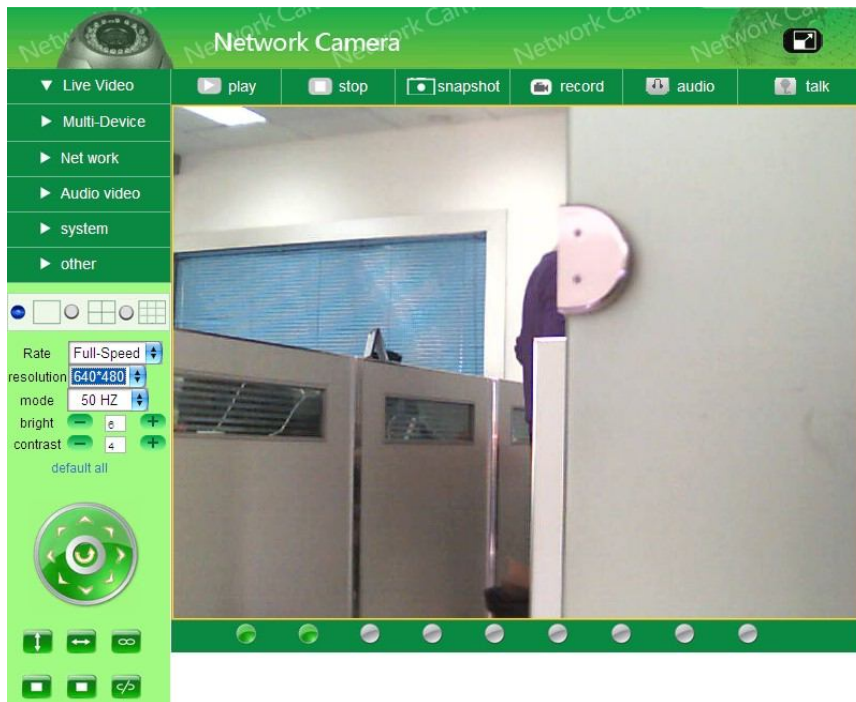



Figure 2.8

 Vertical patrol

 Horizontal patrol

 Stop patrol

 IO output Switch on/off. (See 2.5.5 for more informations)


Rate: setting video frame

Resolution: 160*120/VGA (640*480) / QVGA (320*240)

Work mode: 50Hz/60Hz/Outdoor

Color parameter: Click  or  can adjust the brightness and contrast

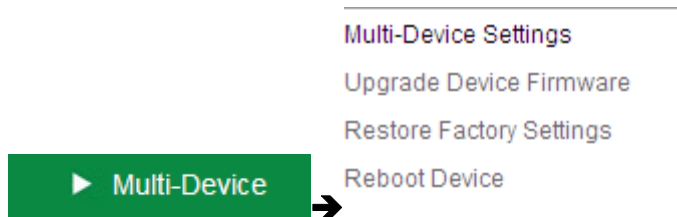
Image PTZ function: Image PTZ function is recommended, you can control the camera Direction on the video image. Double click the right mouse on the image to enable PTZ

and you can see a white arrow  on the video image, click left mouse to control direction. If want to cancel, double click right mouse again.

2.3.3 For Administrator

When you login as administrator, “**For Administrator**” is enabled.

2.3.3.1 Multi-Device Settings



- Use multiple cameras in LAN

In the Multi-Device Settings page, you can see all devices searched in LAN. The 1st Device is this device default. You can add more cameras list in LAN for monitoring .This Web software Supports up to 9 IP Cameras online simultaneously.

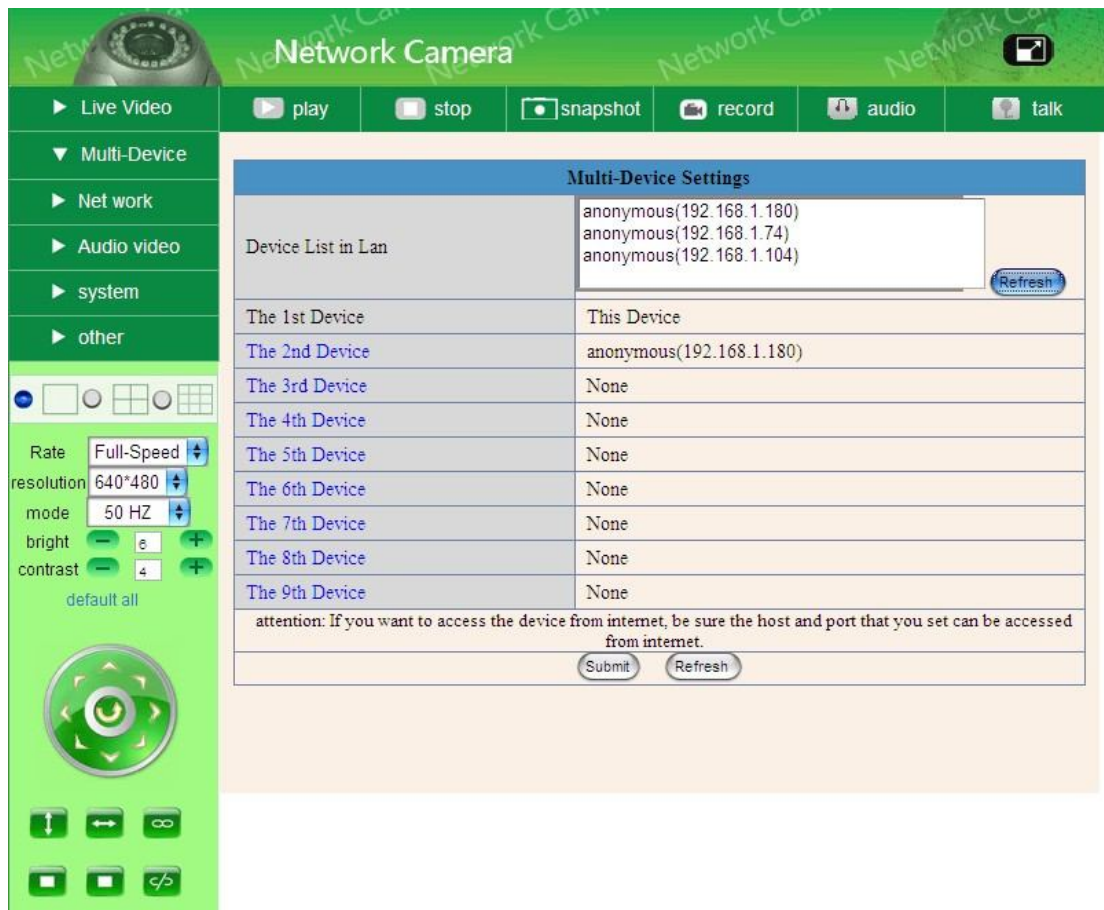


Figure 2.9

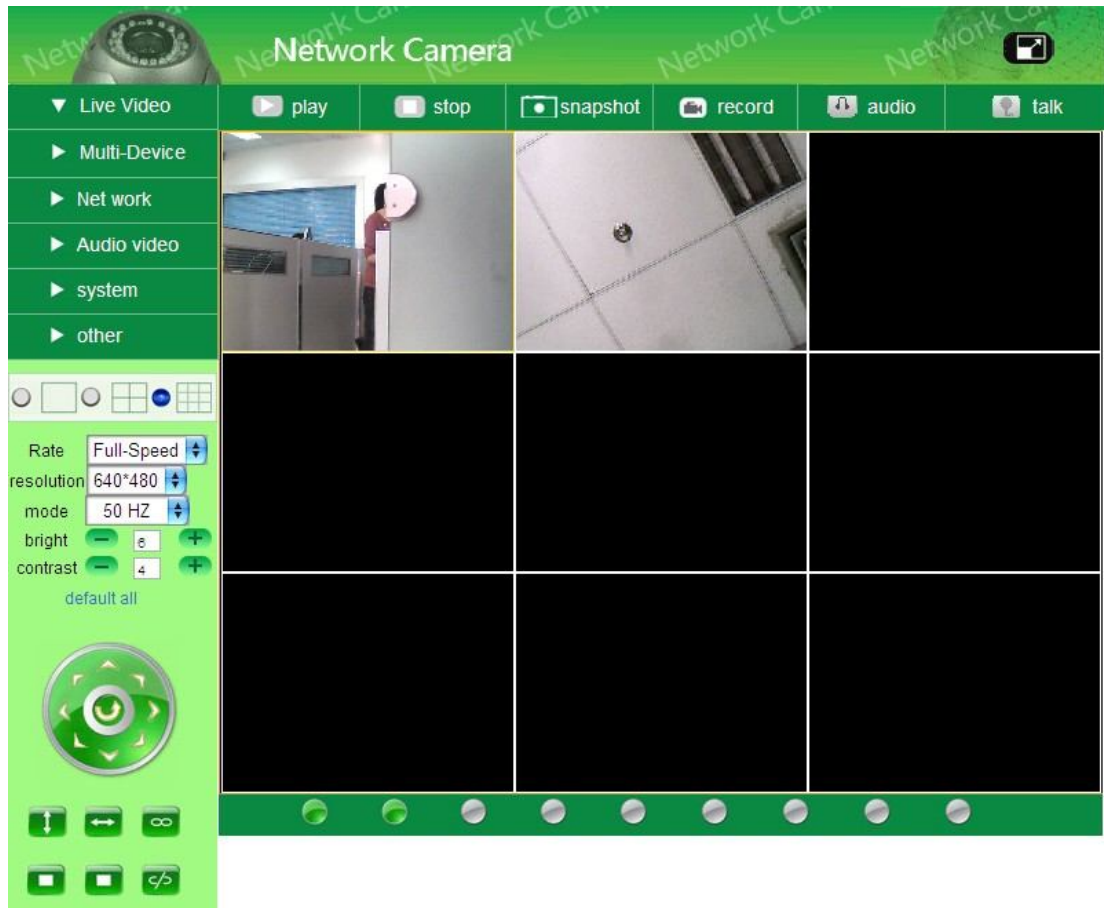


Figure 2.10

- Use multiple cameras with a single IP address

In the Multi-Device Settings page .You can use multiple camera with a single IP address by configuring different ports for each camera .By default, the Device uses port 80 for accessing the camera's homepage and video streaming.

Adding a second camera:

If you decide to add a second IP camera, you will need to change the port number for the second camera.

Camera#2: LAN IP address is 192.168.1.124-Port 81

Will be forwarded to: <http://192.168.1.124:81>

Note that Camera #2 has a different IP address and a different port number. The LAN IP address is assigned by the router, but the port number is not one you will need to configure the port number (details:2.5.2). Once you have changed the port number for the camera and the settings in your router, you can access the second camera from the Internet by <http://192.168.1.124:81>

Adding more cameras:

If you decide to add more cameras, you will need to change the port number for the other cameras, such as 82,83,85. To access these cameras from the Internet, you would use:

<http://192.168.1.124:82>

- Upgrade Device Firmware

Upgrade Device Firmware and device embedded web UI software in this page.

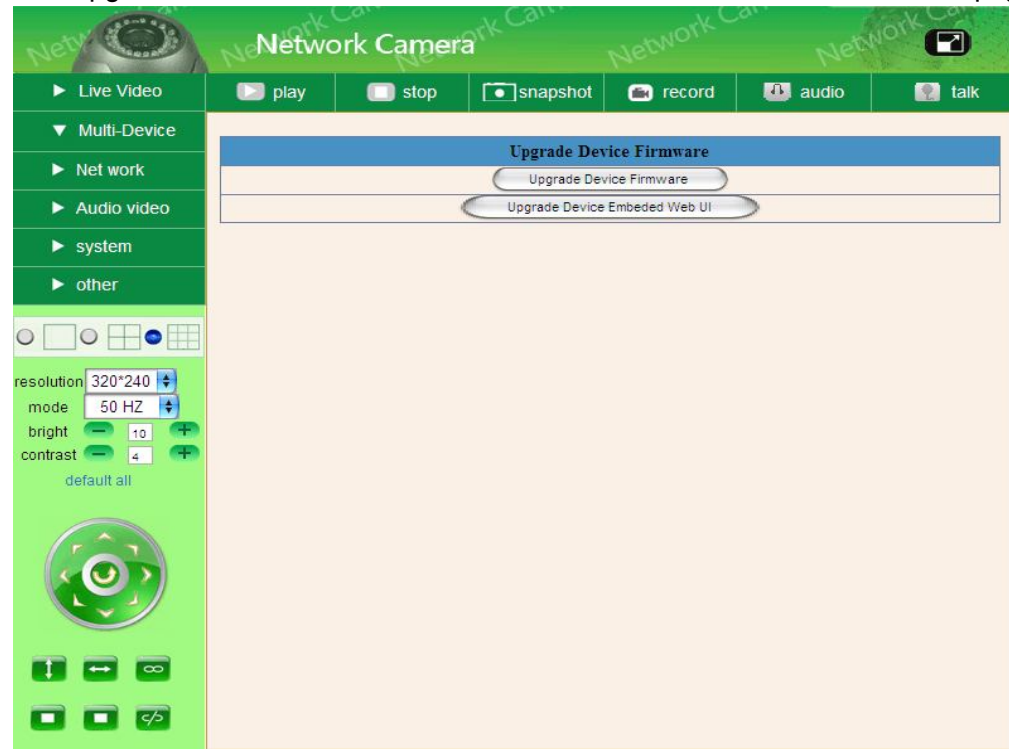
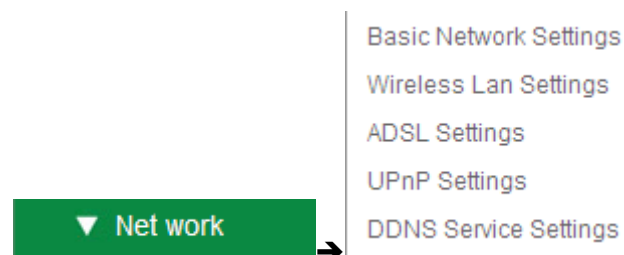


Figure 2.11

- Restore Factory Settings
Restore factory settings of the device.
- Reboot Device
Reboot the device.

2.3.3.2 Network Settings



- Basic Network Settings

If the router and the IP camera connect has DHCP function, you can choose “Obtain IP from DHCP Server” else fill in the network parameters manually.

Http Port: In most cases, you can leave this value as however, if your Internet Service Provider blocks this port, you may switch to another port number such as 85.

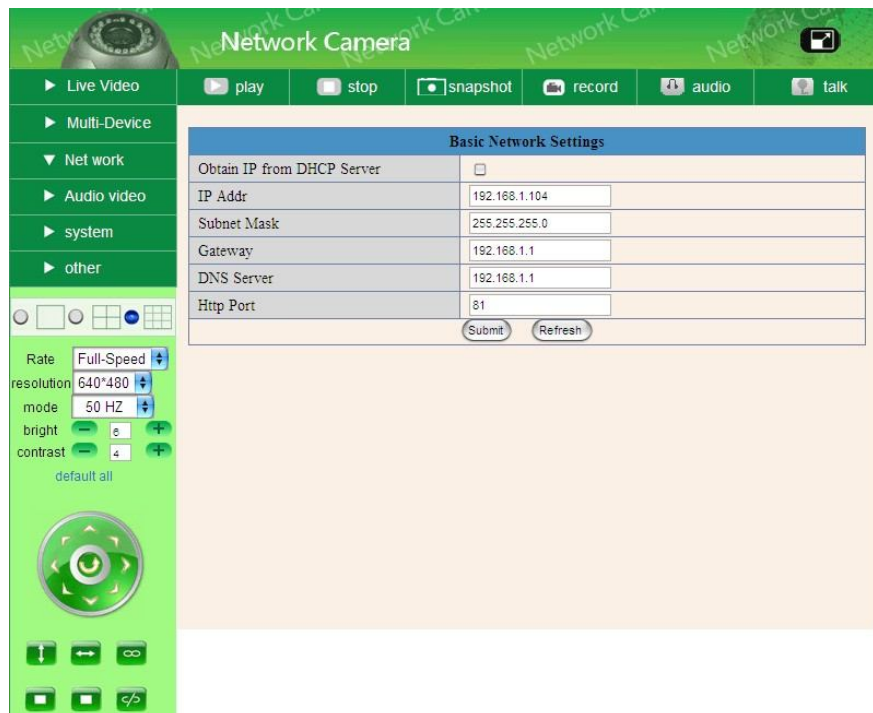


Figure 2.12

- Wireless Lan Settings

Please enter the wireless net setting page of the wireless Router to out SSID, Channel, Encryption, Authentication.

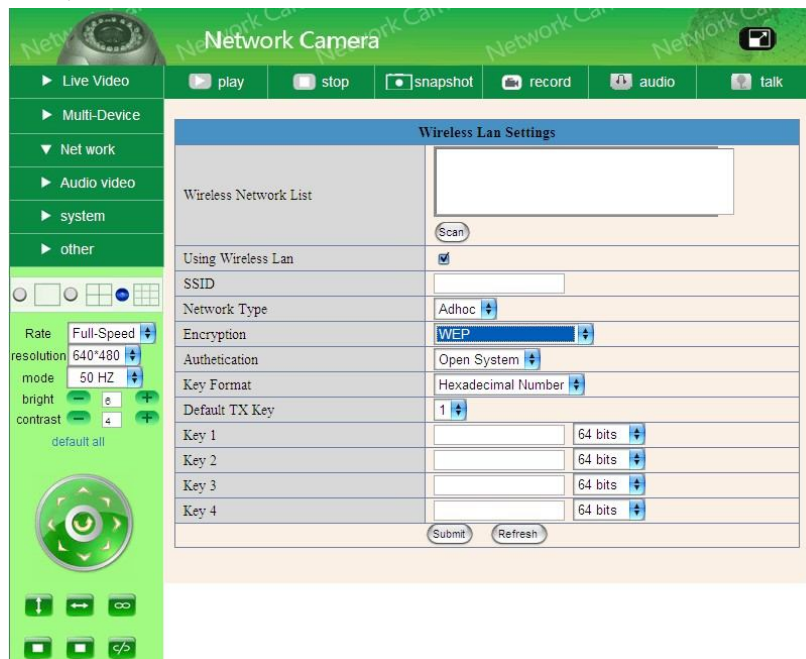


Figure 2.13

- ADSL Settings

When connected to the Internet through ADSL directly, you can enter the ADSL username And password obtained from ISP.

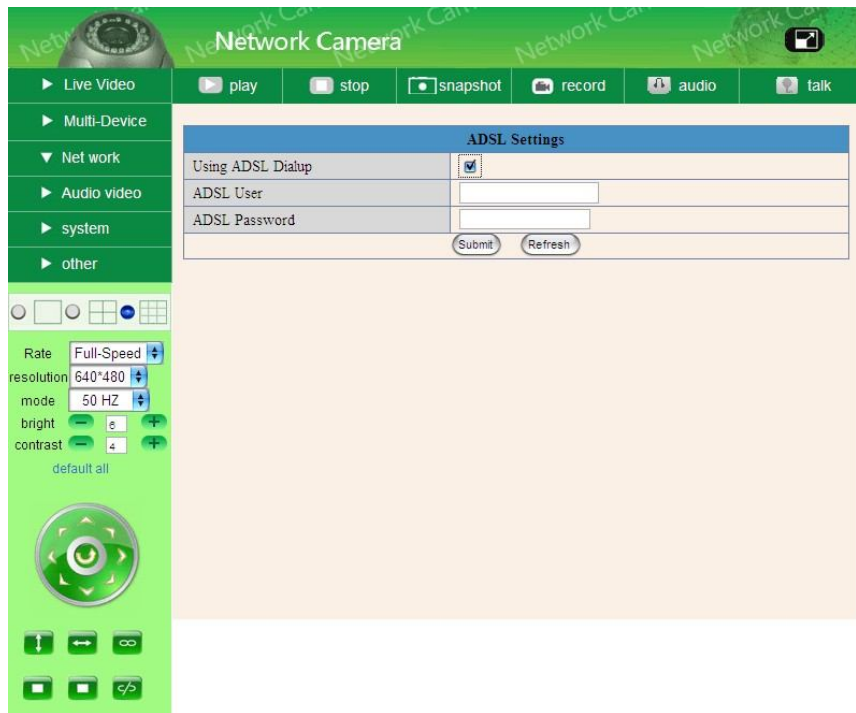


Figure 2.14

- UPnP Settings

If you access IP Camera, to be make sure **UPnP Status** is Succeed. UPnP Protocol settings, as Figure below:

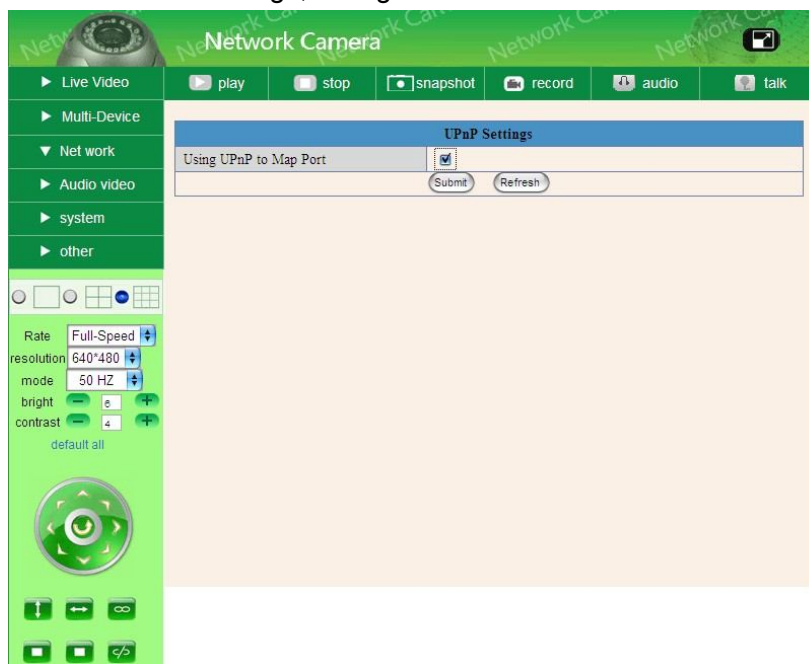


Figure 2.15

● DDNS Settings

Manufacturer's Domain: manufacturers provide a domain name, which has been embedded to the terminator, with its domain name in factory setting. When the user chooses domain name of the third-party, the manufacturers can't boot domain name. When null for the third-party domain, booting domain name of manufacturers automatically.

Use domain name of manufacturers format Correctly :

for example , http:// lyey.aipcam.com: [port number]

we can neglect it if the port is No.80

DDNS Service: The system support protocols from some DDNS providers: Dyndns.org.

User and Password: the user name and password used when applying for the domain name.(details:4.1.6)

DDNS Host: the Domain Name

DDNS or Proxy port: If you access the DDNS host through a proxy, you should input the Proxy IP

DDNS or Proxy Port: Proxy Port

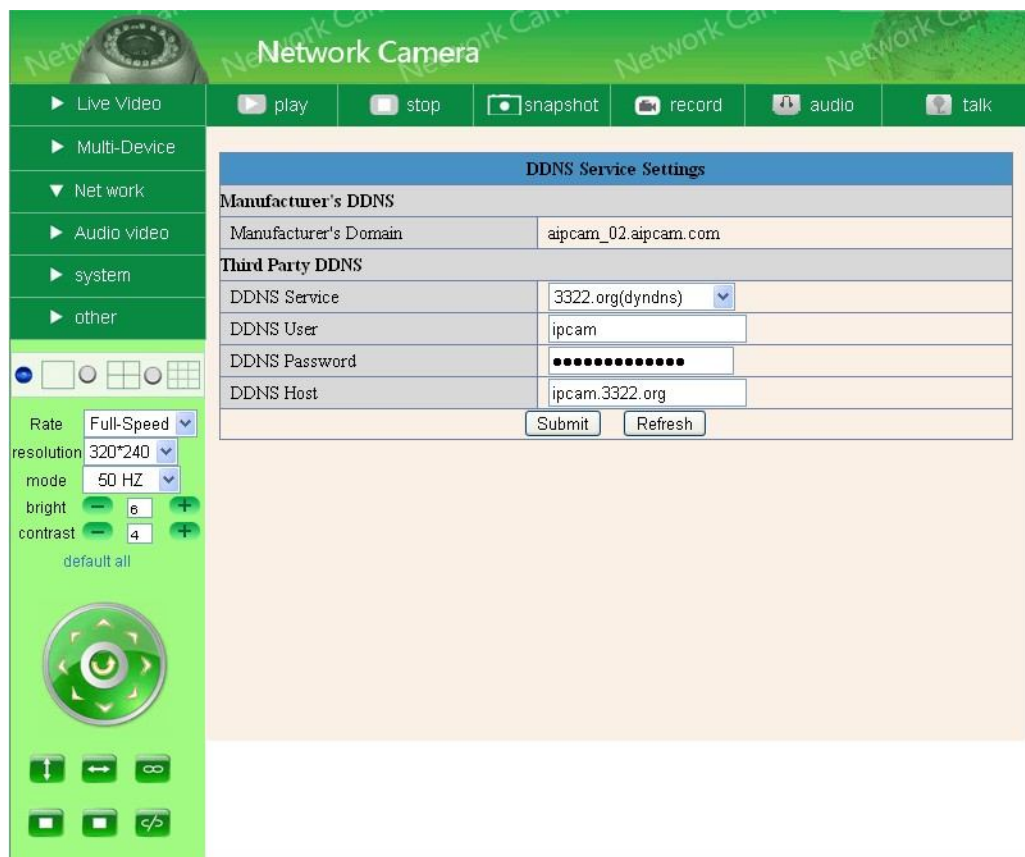


Figure 2.16

2.3.3.3 Other Service Settings



Configure the E-mail box to receive and send mails. The E-mail box is used for receiving the images sent after alarm and the system IP address after successful dial-up.

- Mail Service Settings

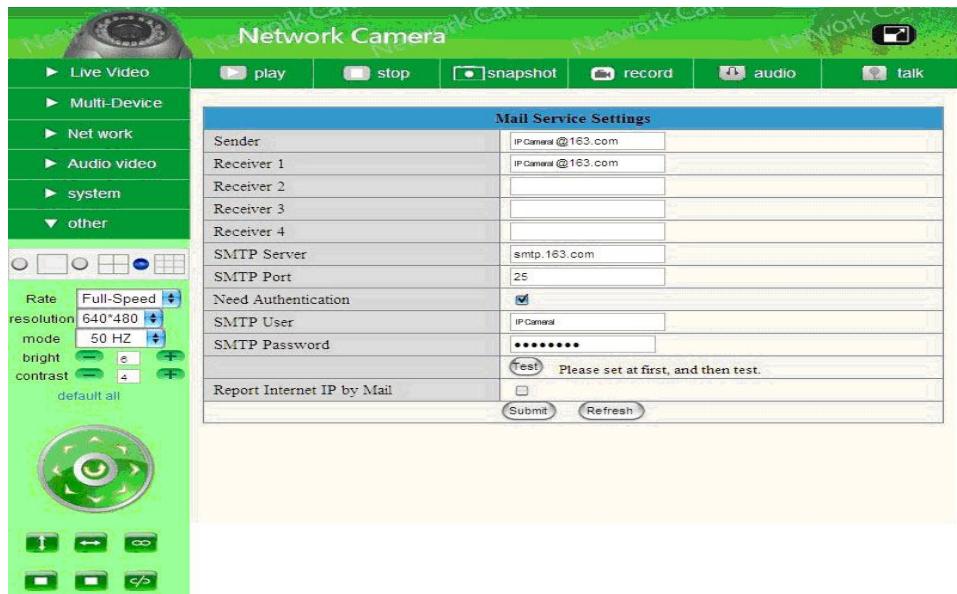


Figure 2.17

- Settings the FTP Service:

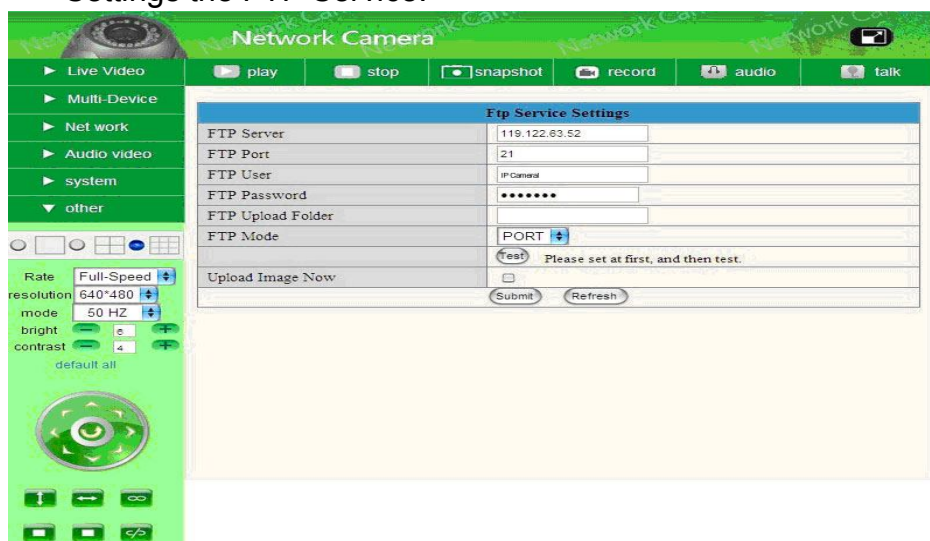


Figure 2.17

- Alarm Service Settings

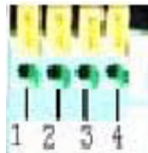
Enter Alarm Service Settings page to configure Motion Detection function.

Motion Detect Armed

When you enable motion detect armed, the camera can be triggered to send email alerts sound you will hear.

Motion Detect Sensibility

You can choose level 1-10, level 1 means the most sensitive, 10 means the least of all



I/O PINS: 1 Output (+5V) 2 Output 3 Alarm input 4 Input (GND)

Alarm Input Armed


Input pins: The input pins can be used for 1-way external sensor input For example; you may connect a person Infrared Sensor (PIR) to it for motion detection. When external sensor triggered,

IP CAMERA can be programmed to send an email with picture or control the internal relay output.

If you link an external alarm with Pin3 and Pin4, when enable alarm input armed ,external alarm is enabled

IO Linkage on Alarm

Enable IO linkage on alarm, Pin 1 will output +5V when alarm triggered, and output LOW when alarm release automatically.

Switch on/off  buttons control Pin1 output manually.

Send Mail on Alarm

Sent picture and mail inform to customer's e-mail after alarmed. (Firstly you should finish the Mail Service Settings.)

Upload Image on Alarm

Enable upload image on alarm and set upload interval (Seconds).

REC automatically and save to PC

When you enable motion detect and open the camera monitoring page on the PC. If there is an alarm triggered, REC will start automatically for several seconds and save to the PC.

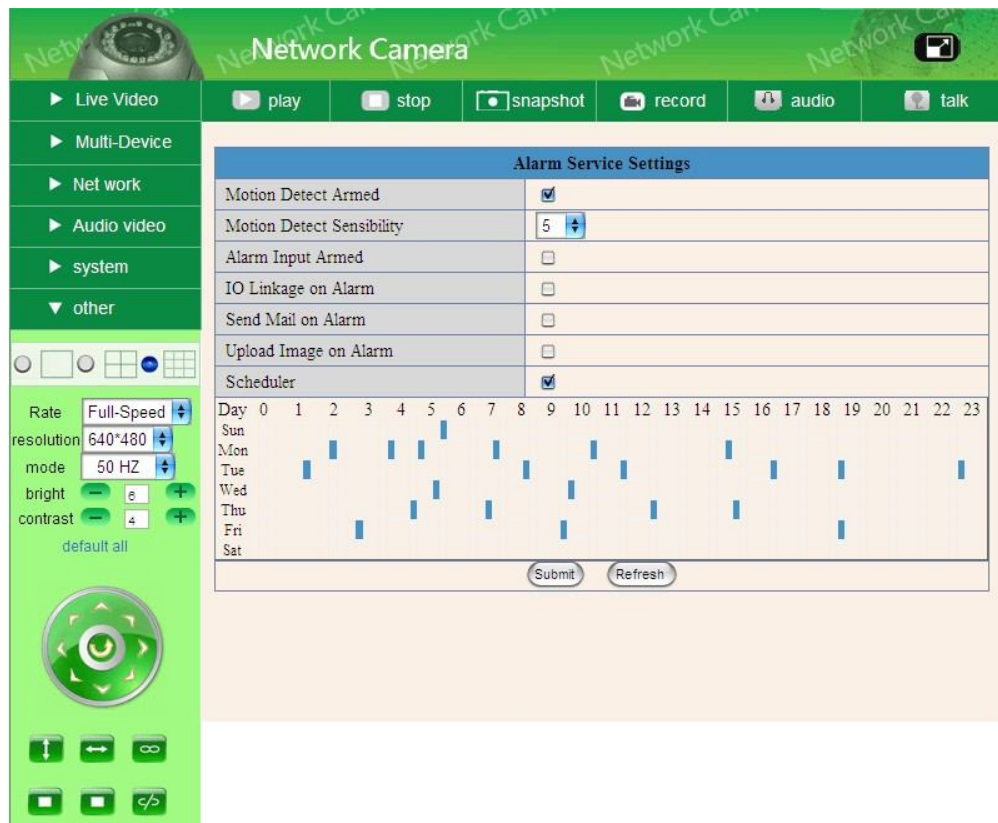


Figure 2.18

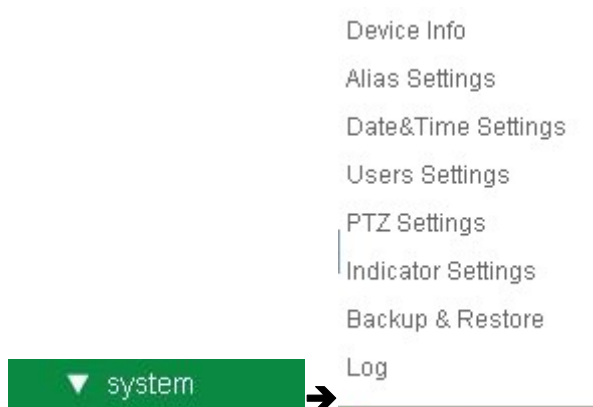
● Path Settings

Setting the path of preserve video, when start record video, click **record**, and the video file will be preserved in the specified directory Record Path. As below figure:



Figure 2.19

2.3.3.4 System



- Device Info

You can find the information about Device ID, Firmware Version and **Embedded Web UI** Version.



Figure 2.20

- Alias Settings

You can Input the new name as you like.

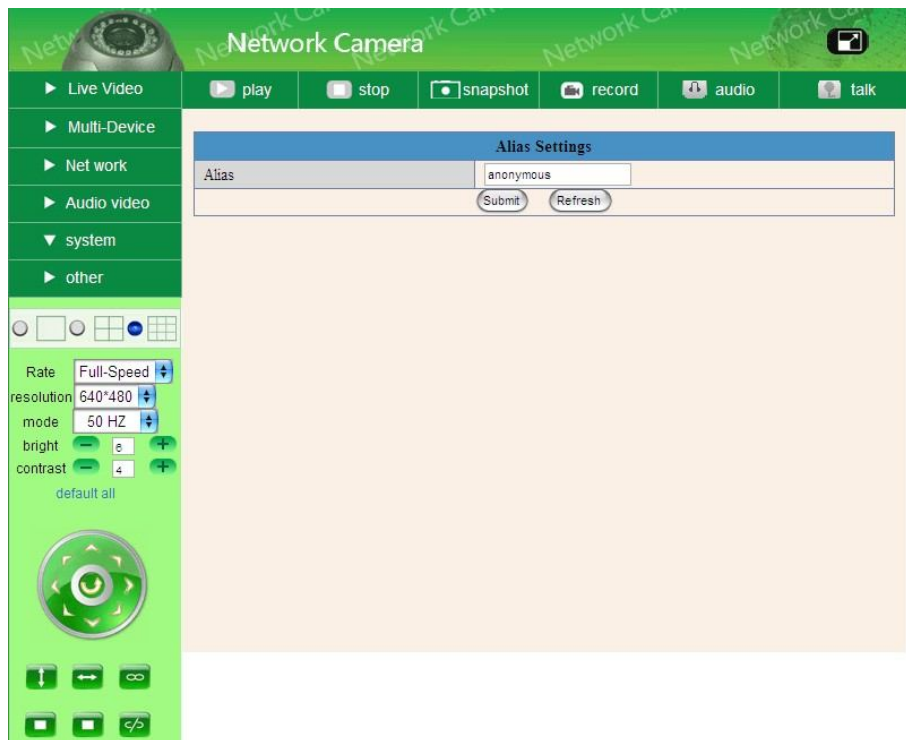


Figure 2.21

- Date & Time Settings

Data & Time Settings page.

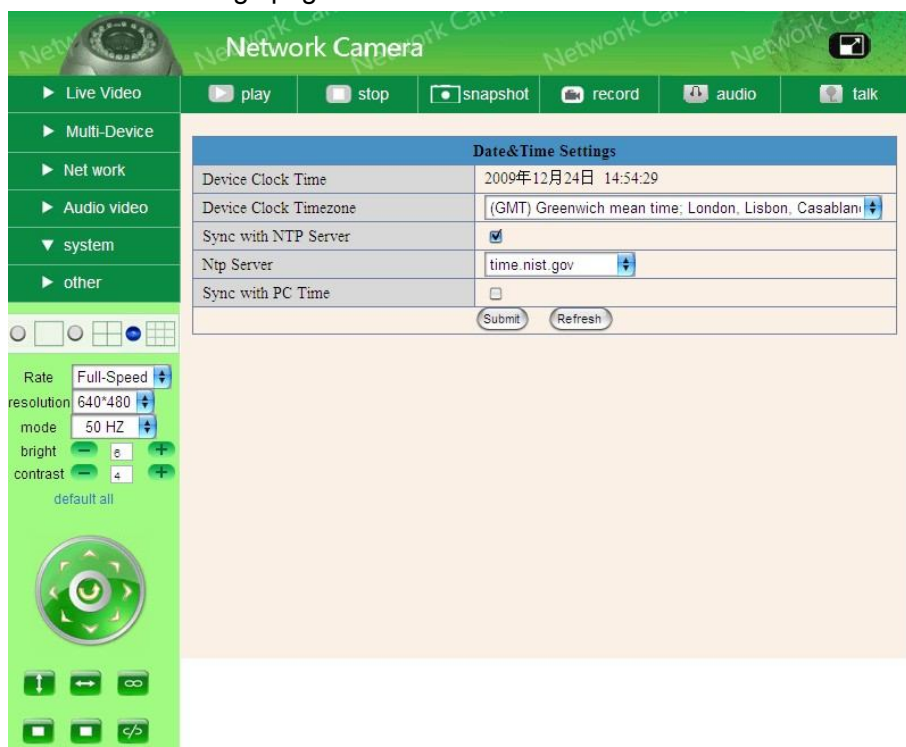


Figure 2.22

● Users Settings

Eight accounts are acceptable for this system. Here the eight users can Configure their user names and password as administrator, Operator or Visitor.

- **Visitor:** In this mode, you can only view.
- **Operator:** You can control the direction of IP Camera and set some parameter.
- **Administrator:** You can setup the advanced configurations of the IP Camera.

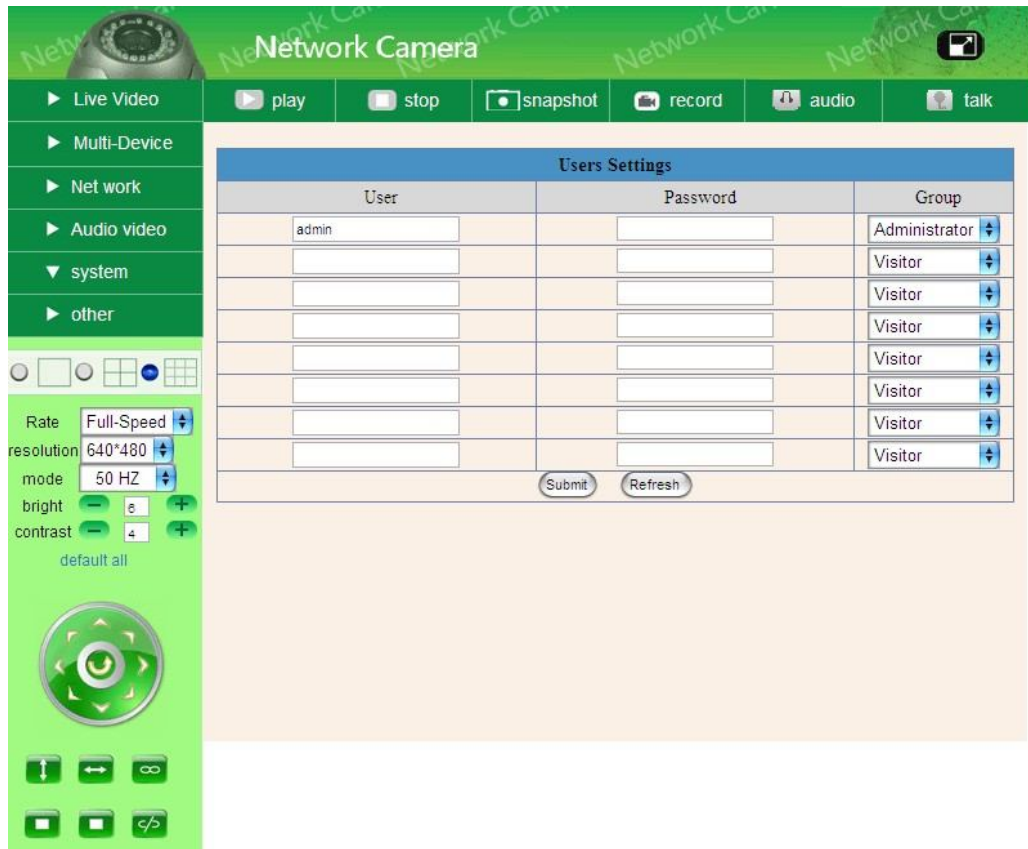


Figure 2.23

● PTZ Settings

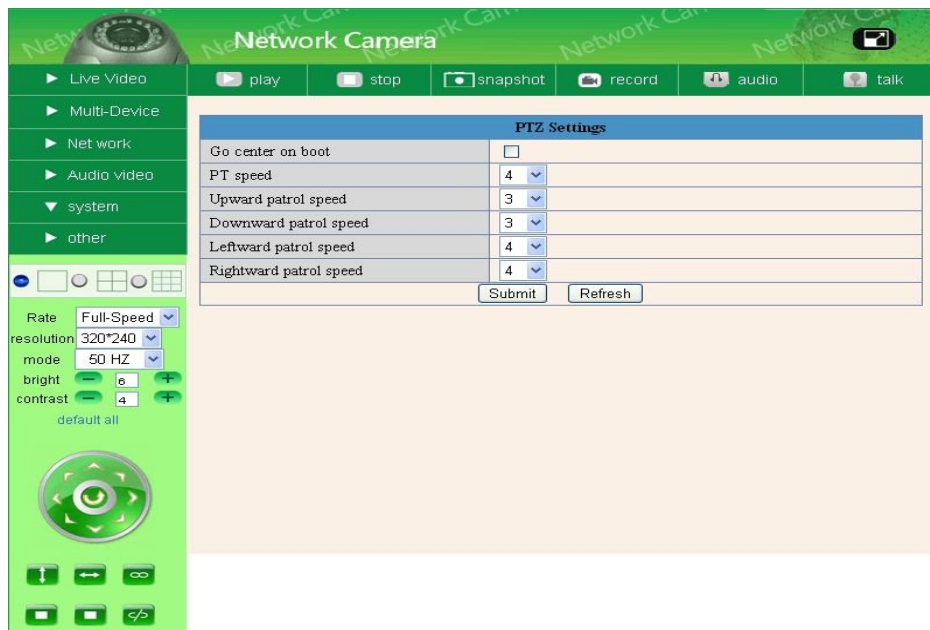


Figure 2.24

- (1) Go center on boot : IP Camera lens to the center automatically when it starts
- (2) PT speed : Set PTZ rotary speed
- (3) Upward patrol speed : Set the speed of PTZ cruising upward
- (4) Downward patrol speed : Set the speed of PTZ cruising downward
- (5) Leftward patrol speed : Set the speed of PTZ cruising leftward
- (6) Rightward patrol speed : Set the speed of PTZ cruising rightward

● Indicator Settings

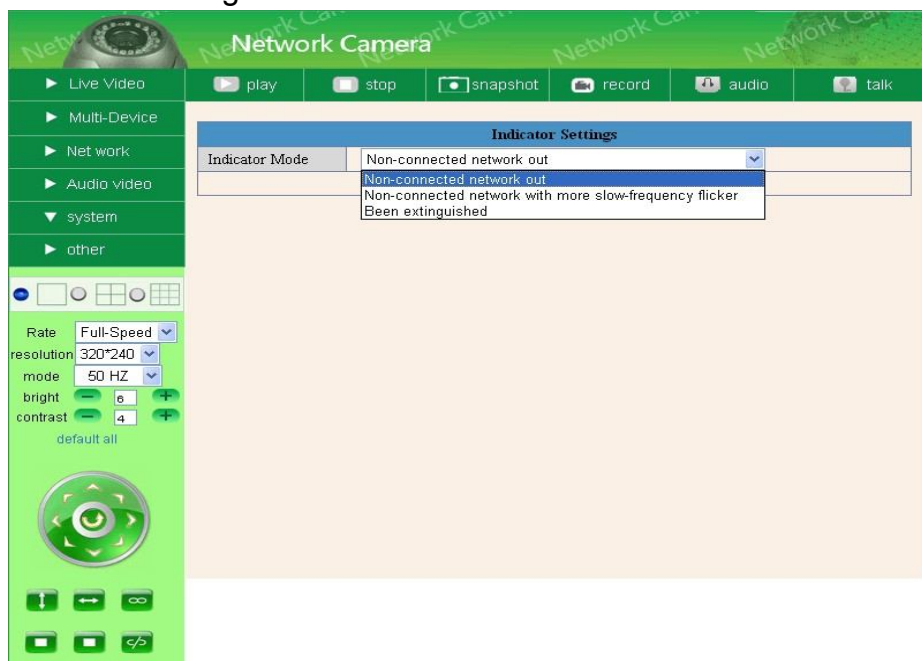


Figure 2.25

Set the pilot lamp mode , the following three options

- (1) twinkle while connect to the internet and turn off when departed
- (2) twinkle while connect to the internet and turn shower when departed
- (3) Keep off

● Backup & Restore

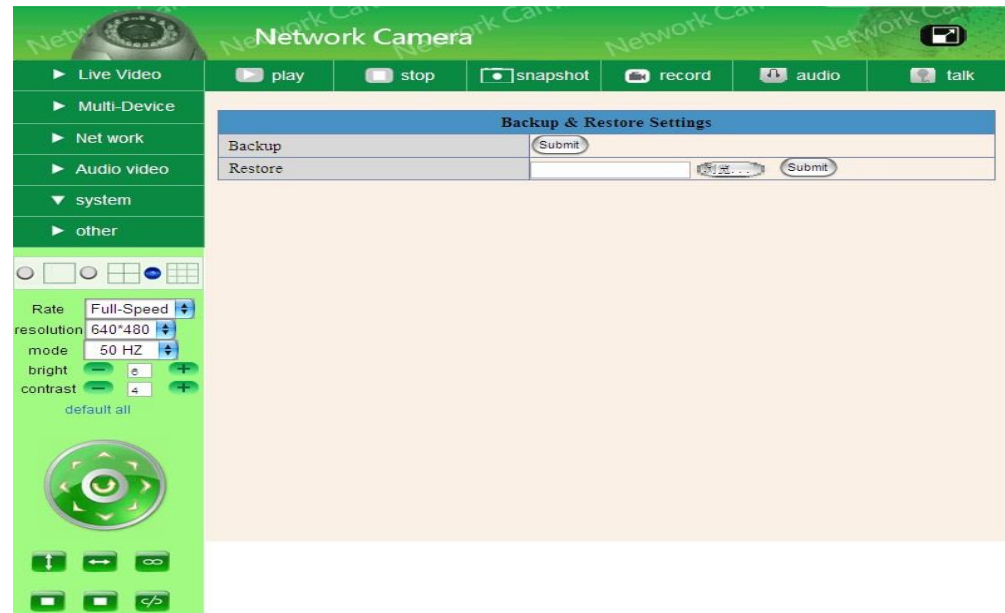


Figure 2.26

- (1) Backup : Backup IP Camera all the Parameter
- (2) Restore : Restore IP Camera all the Parameter

● Log

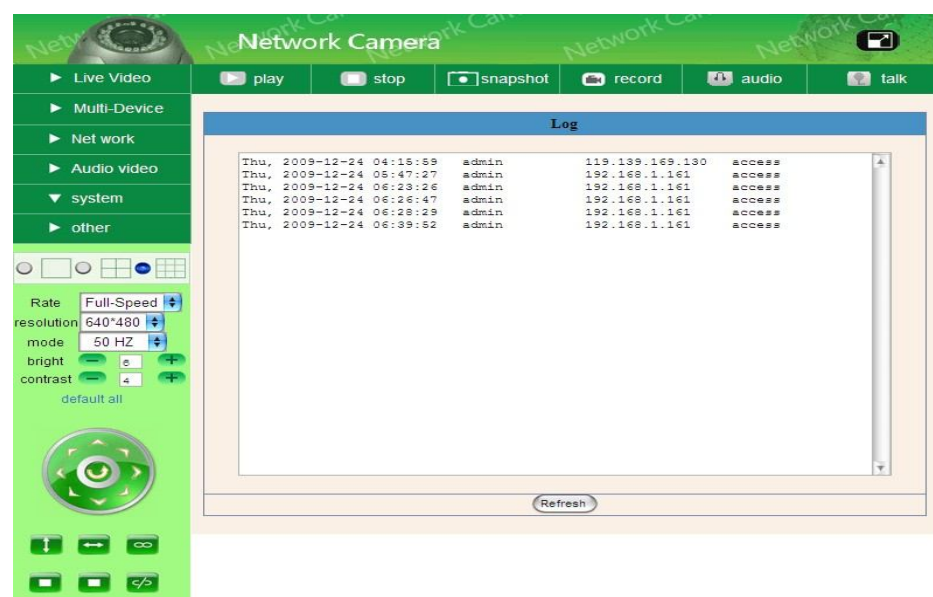


Figure 2.27

Record User info, including date, weekday, user name, visitor ip address info

2.4 Server Push Mode

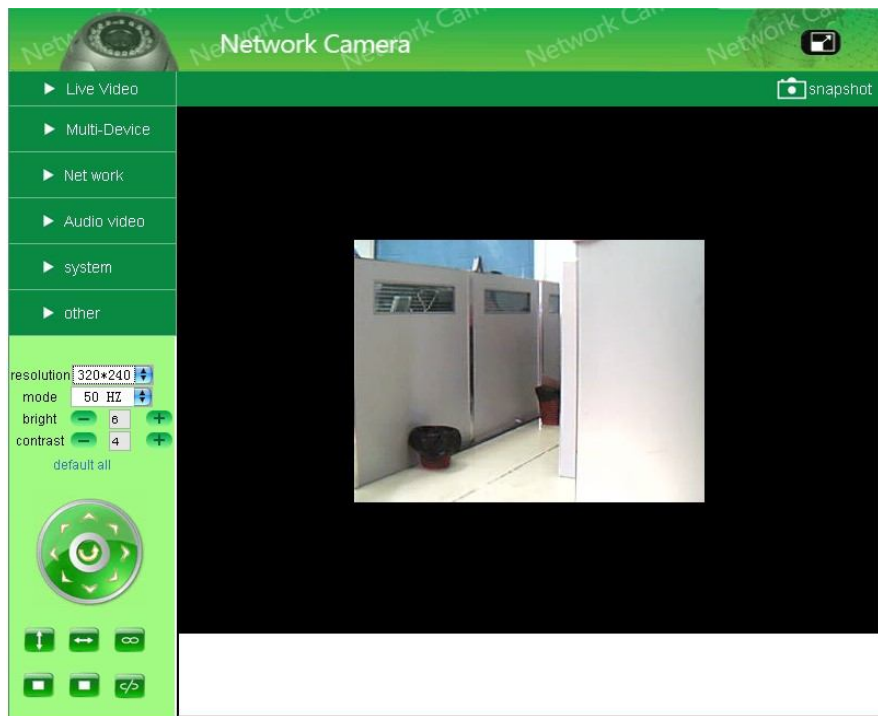


Figure 2.28

Main info as below:

1. One screen
2. Used in firefox, google, safari explorer and so on
3. Sever Push: used Http sending video and seeing paramer
4. Operation of ip camera or paramer similar Active Mode, please read Activex Mode part

2.5 Sign in mobile phone

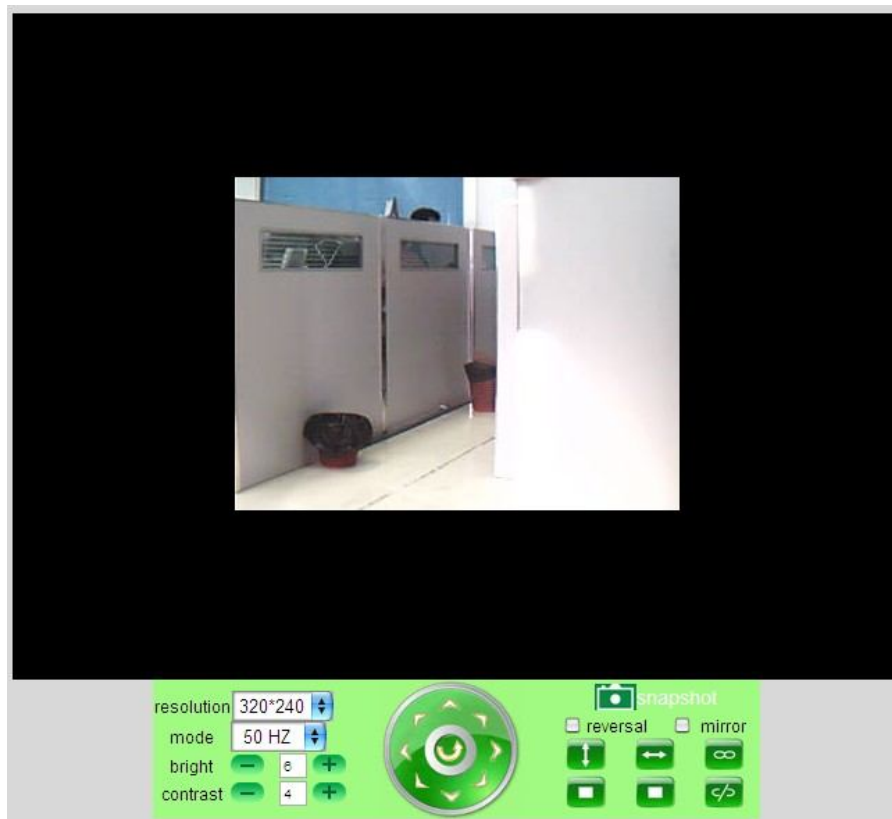


Figure 2.29

Main info as below:

- (1) Log in web on mobile phone, can control snapshot, video operator, I/O alarm
- (2) Simple screen, easy to operate, can visitor the video via mobile phone web
- (3) Others operation similar Activex Mode, for details, please read Activex Mode part

3 HOW TO USE

3.1 Step by step to use

Follow the instructions below to get started after the Camera has been mounted properly.

- 1) Use Network cable connect IP Camera to LAN.



- 2) Enter **IP Camera Tool** to set the basic configuration, (details:2.1)

- 3) When IP address of the Camera listed in the Result Field of the **IP Camera Tool**, it means the basic configuration is completed.
- 4) Set the safety property of IE in the PC when you view it first time, (details:4.1.3)
- 5) Camera login(details:2.2)
- 6) Now you can use the IP Camera as Visitor, operator or Administration in the LAN.

3.2 Setting Wi-Fi of IP Camera

- 1) To use the wireless function of the IP Camera, a wireless router like Linksys is required.
- 2) Enter the wireless router setup page (you may see the wireless router user manual). To Find out the **SSID, Channel, Security Way, Authentication Type, Encryption**.
- 3) Enter **Wireless Lan Settings** to input contents got from the wireless router then click **Submit** to reboot the device.

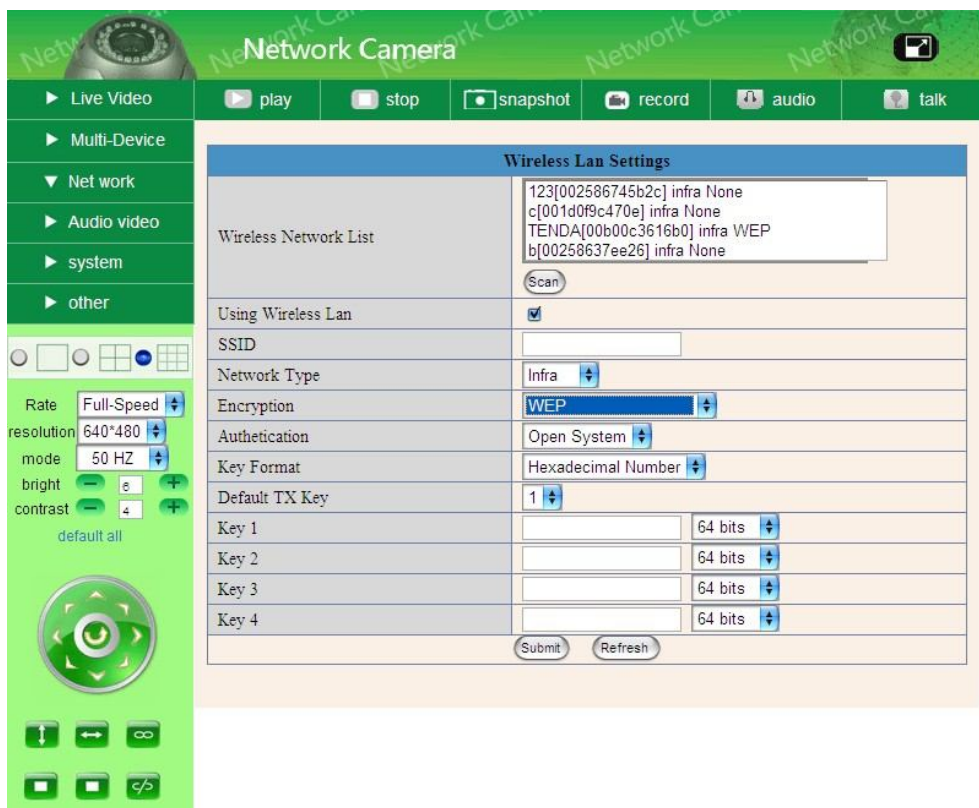


Figure 3.1

- 4) Wait at least 30 seconds to unplug the Ethernet cable, then unplug the power supply.
- 5) Plug the power supply making sure that the Ethernet is not connected.

- 6) After around 30 seconds, if the LED blinks, it indicates it is working in WIFI mode.
- 7) Camera login. (details:2.2)

3.3 Connected to the Internet through ADSL directly

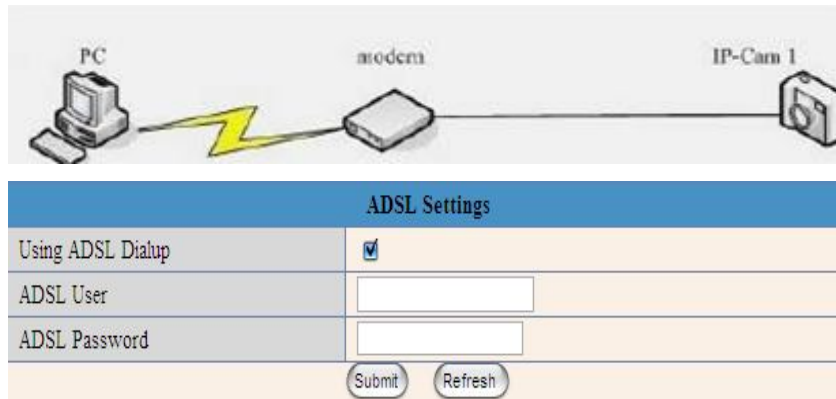


Figure 3.2

- 1) Use Network cable connect IP Camera to PC
- 2) Enter IP Camera Tool to set the basic configuration, (details:2.1)
- 3) Login the Camera homepage as Administration and enter **ADSL Settings** page to input ADSL User name and password.
- 4) Enable DDNS service at the same time and Click <Submit> and to reboot the Device, (details:2.3.3.2)
- 5) Connect IP Camera to the ADSL directly, you can access the Camera from Internet by domain name.

NOTE: Please choose the option "Report ADSL IP by Mail", then it will send ADSL IP to user by Email.

3.4 Using a router to access the Internet

Using a router to access the Internet by shared ADSL If a router is set for dial-up Internet access, it is not required to set ADSL dial-up account and password on the IP Camera.

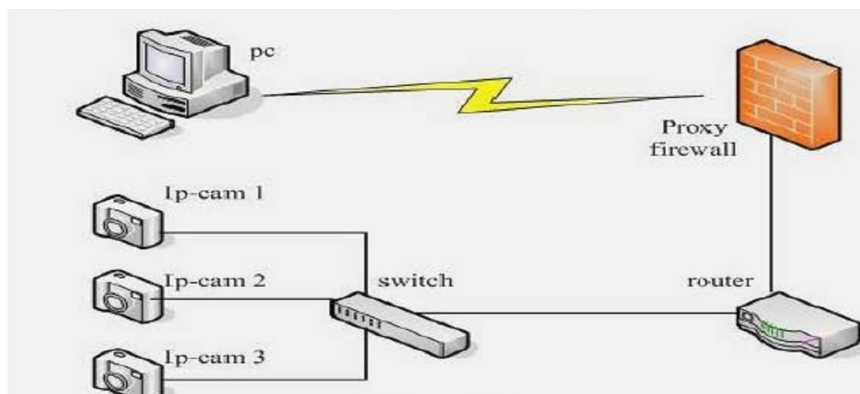


Figure 3.3

- 1) Use Network cable connect IP Camera to the LAN.
- 2) Enter **IP Camera Tool** to set the basic configuration,(details:2.1)
- 3) Login the Camera homepage ad Administration.
- 4) Enter **DDNS Settings Page** and enable DDNS service. Click **<Submit>** and the device will reboot (details:2.3.3.2)
- 5) You can access the Camera from Internet by domain name.

3.5 Static IP user

Static IP user is not need to use DDNS for remote access. When finished the setting of the IP Camera in LAN, you can access the Camera directly from Internet by the WAN IP. You can obtain the WAN IP by two ways.



IP Address (Internet Protocol Address); This number is on extrusive Number at Information technology devices (printer, routers, modems, et al) use which identifies and allows them the ability to communicate with each other on a computer network. There is a standard

Figure 3.4

Obtain the WAN IP address from the router

Take the WRT54G router of LINKSYS for example,

- 1) Obtain the IP address of the router (LAN gateway address), user name and password for logon to the router from the network administrator,
- 2) Enter the LAN IP address of the router; Open the **Status** page to find out the WAN address of the router. In this example, the address is 116.25.51.115.



Figure 3.5

Access the IP Camera from the Internet

User can access the IP Camera from the Internet, Enter [Http://116.25.51.115](http://116.25.51.115) into the address bar of the IE to access the IP Camera.

3.6 How to use DDNS

When use ADSL, the IP Camera will connect to the Internet through ADSL automatically.

For each ADSL reconnection, ISP will re-assign a new IP address for the IP Camera to facilitate the access. DDNS (Dynamic Domain Name Server) can map the dynamic IP address of an IP Camera to a fixed domain name. Therefore, we can access the IP Camera by the fixed domain name whether the IP address changes or not. The IP address is not necessary when you using the DDNS via the domain name to find your network.

- 1) Go to the website which Provides free domain name, register and apply a free domain name. Such as [http://www.dyndns.com/\(details:4.1.6\)](http://www.dyndns.com/(details:4.1.6)).
- 2) Login the Camera homepage as Administration and enter “**DDNS Service Settings**” page input the name, password and Host (detail: 2.3.3.2). Then click<**SUBMIT**> and reboot Device.
- 3) Re-login the Camera homepage and enter “**DDNS Service Settings**” page to check the **DDNS Status** is **DynDns Succeed** or not.
- 4) Enter “**UPnP Settings**” page, the **UPnP Status** should be **UPnP Succeed**. If the status is not **Succeed**, you may enter “**Basic Network Settings**” page to change Http Port (details:2.3.3.2). Then click <**SUBMIT**> and Reboot Device.

- 5) Re-login the Camera homepage to check and make sure the **DDNS Status** and **UPnP Status is Succeed**.
- 6) You only need to enter the domain name(domain name Port number
http://IPCAM.vip.net:81/) in the IE address bar, the browser will visit the IP Camera. Wait for several minutes and the IP Camera will dial up to access the Internet automatically, and the communication with the DDNS server is established successfully. In the way, the user can access the IP Camera from a WAN by using the DDNS domain name.

If the gateway settings and DDNS settings have been completed, enter the DDNS dynamic domain name (for example, http://IPCAM.vicp.net/, do not add www.) in the address bar of the IE to access the IP Camera. If multiple IP Camera are connected to the same router, enter DDNS dynamic domain +port number (for example, http://IPCAM.vip.net:85/) in the address bar of the IE to access different IP Cameras.

4 APPENDIXES

4.1 Frequently Asked Questions

Note: Any questions you would meet, please check Network connections firstly. Check the working status revealed by the indicators on the network server, hub, exchange and network card. If abnormal, check the network connections.

4.1.1 I have forgotten the administrator username and/or password.

To reset the administrator username and password, Press and hold down the RESET BUTTON for 10-15 seconds. Release the power button and the username and password will be reset back to the factory default administrator username and password.

Default administrator username: **admin**

Default administrator password: No password

4.1.2 IP Address configuration

Check whether IP address of the IP camera server shares the same subnet as your work station: Click My Computer >Control Panel> Network & Dial-up Connections > LAN > Attributes >Internet Protocols (TCP/IP), and check IP Address and Subnet Mask. Make sure they are in the same subnet when configuring IP Camera IP address manually.

Unable to access IP Camera via web browser

4.1.3 Network Configuration

Double Check to ensure that your HTTP server software is configured and run properly. If you're running any firewall software, make sure it's allowing inbound connections to port 80, also, if you happen to be using a cable/DSL router, make sure you've set up port forwarding properly. (Consult your router's documentation for more information). If none of these seem to be the problem, it's also possible that your ISP is blocking inbound connections to port 80-many IPSS have done this because of internet worms such as Code Red, If this is the case, you'll have to setup your HTTP server on an alternate port (such as 8080).

4.1.4 No pictures Problems with ActiveX Controller

If Internet Explorer is used as WEB Browser, download ActiveX controller and set the safety property of IE in the PC when you view it first time:

"IE" browser > "Tool" > "Internet Proper" > "Security"> "Custom Level"> "ActiveX control and Plug-ins" three options of front should be set to be "Enable", The ActiceX programs read by the computer will be stored, as follows:

Enable: Download unsigned ActiveX controls

Enable: Initialize and script ActiveX controls not marked as safe

Enable: Run ActiveX controls and plug-ins

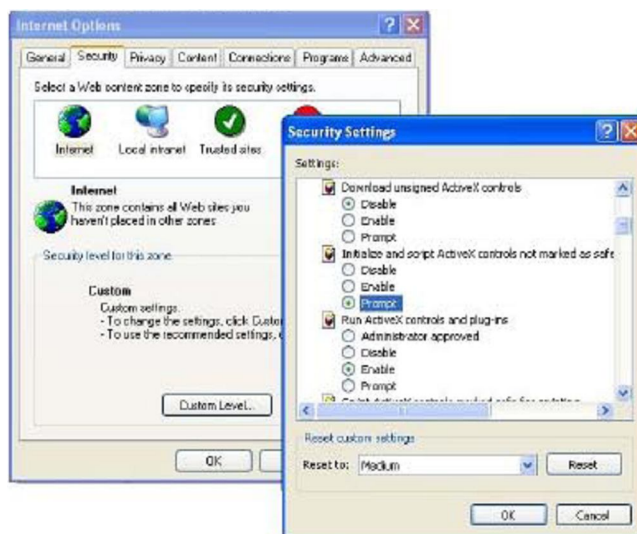


Figure 4.1

4.1.5 Problems with network bandwidth

The image frame rate is subjected to the following factors: 1, network bandwidth; 2, PC performance, network environment and display preference setting (brightness, theme, etc); 3, the number of visitors (Too many visitors will slow down the image frame rate.); 4, choice of switch or hub (Use a switch for multiple IP Camera Servers rather than a HUB,).

4.1.6 For example: Register procedure from a DDNS web

Step 1: enter <http://www.dyndns.com/> and **Create Account**

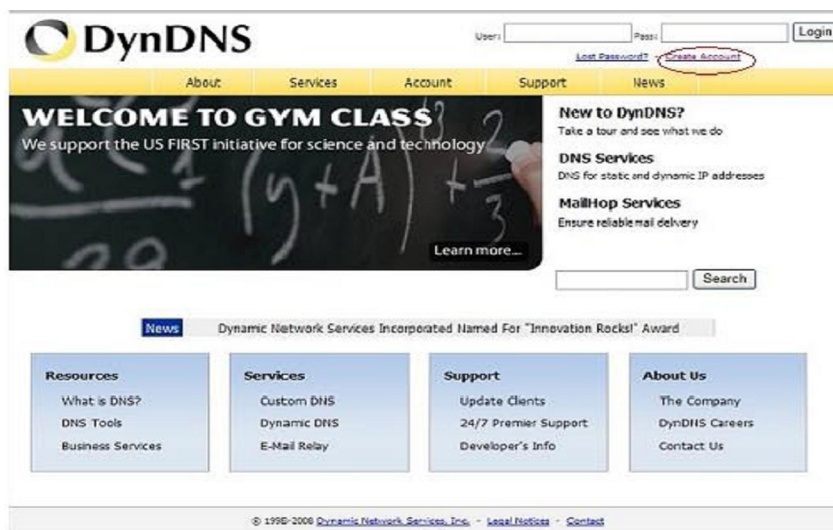


Figure 4.2

Step2: enter your information

The screenshot shows the 'Create Your DynDNS Account' form. The form is titled 'Create Your DynDNS Account' and includes a sub-header 'Please complete the form to create your free DynDNS Account.' The form is divided into two main sections: 'User Information' and 'About You (optional)'. The 'User Information' section contains the following fields: Username (filled with 'foscamlaw'), E-mail Address (filled with 'hwwk@foscamlaw.com'), Confirm E-mail Address (filled with 'hwwk@foscamlaw.com'), Password (filled with '*****'), and Confirm Password (filled with '*****'). The 'About You (optional)' section contains a dropdown menu for 'How did you hear about' and a checkbox for 'I do not want my account information to anyone, including your e-mail address.' The form fields are circled in red.

Figure 4.3

Step3: After a minute, you will receive a E-mail from **DynDNS Support** and it will give you a confirmation address

(e.g. <https://www.dyndns.com/account/confirm/vXMVT78-KvenhydMCMWH5kg>)

Step4: When the Account Confirmed, login and start using your account. Choose Add Host Services(Figure 4.4) and enter Add New Hostname (Figure 4.5) page.



Figure 4.4

The screenshot shows the 'Add New Hostname' page. At the top, there is a note: 'Note: You currently don't have Account Upgrades in your account. You cannot use some of our Host Service features. Please consider buying Account upgrade that make this form full-functional and will add several other features. [Learn More...](#)'. The form has the following fields: 'Hostnames' (containing 'IP Cameral' and 'dyndns.org'), 'Wildcard' (checkbox 'Yes, alias "*"hostname.domain" to same settings.'), 'Service Type' (radio buttons: 'Host with IP address' (selected), 'Webtop Redirect', 'Offline Hostname'), 'IP Address' (containing '116.30.19.113' with a note 'Use auto detected IP address 116.30.19.113' and 'TTL value is 60 seconds [hide TTL](#)'), and 'Mail Routing' (checkbox 'Yes, let me configure Email routing.'). A 'Create Host' button is at the bottom right.

Figure 4.5

Step5: On the **Add New Hostname** page

- 1) Input your Hostname.
- 2) Choose **Host with IP address**

Click Use auto detected IP address xxx.xx.xx.xxx then click **Create Host**.



Figure 4.6

Step6: Now you obtained a Dynamic Domain Name (Figure 4.6), and can use it in the **DDNS Service Settings** (details:2.3.3.2)

4.1.7 Why pop-up the prompt" Fail to connect to the device..."?

This prompt only appeared in the case of using multiple cameras.

Enter the **Multi-Device Settings** page(login as administrator) to check the Device

When you set multiple cameras,  the color changed to yellow.

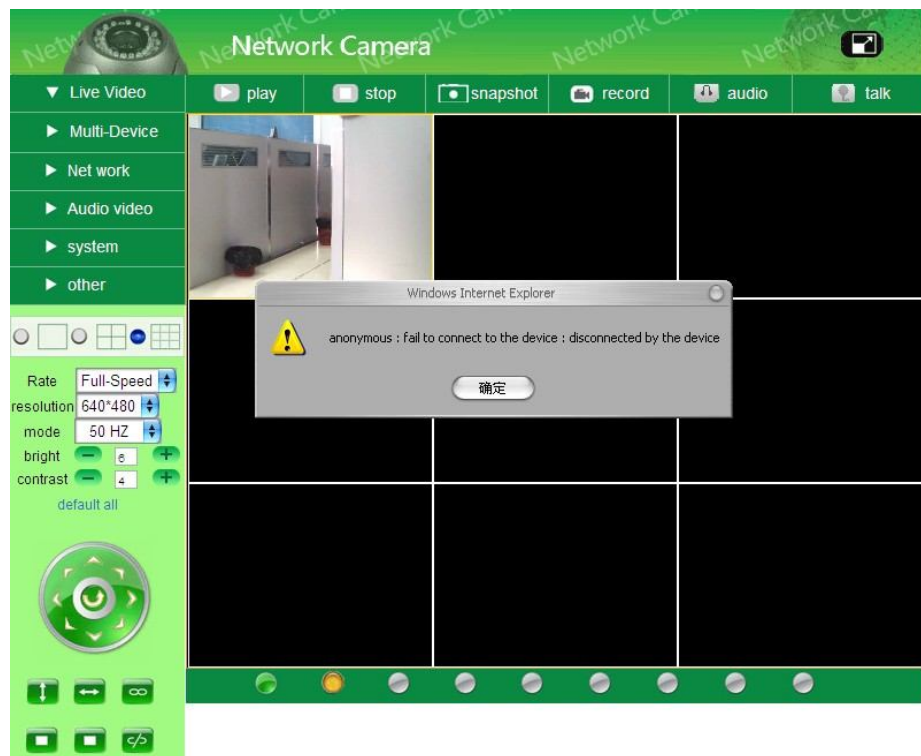


Figure 4.7

4.2 Default Parameters

Default network Parameters

IP address: dynamic obtain

DHCP: Disabled

DDNS: aipcam.com

Username and password

Default administrator username: **admin**

Default administrator password: No password

4.3 Specification

Item	Specifications
Video Compression	MJPEG video compression
Video Resolution Adjustment	640*480(VGA), 320*240(QVGA)
Video Parameters	Brightness, contrast
Video Frame	30 frame/sec(QVGA), 15 frame/sec(VGA)
Communication interface	One 10M/100M adaptive Ethernet interface
Wi-Fi Module	Supporting IEEE802.11b/g/n 20MHz/n40MHz
Power Supply	DC 5V/2A
Maximum Power	< 6W
Operating Temperature	0℃~+55℃ / +14°F ~ +122°F
Storage Temperature	-20℃~+70℃ / -44°F ~ +158°F
Operating Humidity	10~85%
System Requirements	Microsoft Windows 98/ME/2000/XP/Vista/7
Explorer	Microsoft Internet Explorer 5.0 or above

5 OBTAINING TECHNICAL SUPPORT

While we hope your experience with the IP CAMERA network camera is enjoyable and easy to use, you may experience some issues or have some questions that this User's Guide has not answered.

TO obtain the latest information and support for your Observer network camera, please visit our webpage for additional FAQ'S and troubleshooting tips.

15.19 Labelling requirements.

This device complies with Part 15 of the FCC Rules. Operation is subject to the following two conditions: (1) This device may not cause harmful interference, and (2) this device must accept any interference received, including interference that may cause undesired operation. This device and its antenna(s) must not be co-located or operating in conjunction with any other antenna or transmitter.

15.21 Information to user.

The users manual or instruction manual for an intentional or unintentional radiator shall caution the user that changes or modifications not expressly approved by the party responsible for compliance could void the user's authority to operate the equipment.

15.105 Information to the user.

(b) For a Class B digital device or peripheral, the instructions furnished the user shall include the following or similar statement, placed in a prominent location in the text of the manual:

Note: This equipment has been tested and found to comply with the limits for a Class B digital device, pursuant to part 15 of the FCC Rules. These limits are designed to provide reasonable protection against harmful interference in a residential installation. This equipment generates, uses and can radiate radio frequency energy and, if not installed and used in accordance with the instructions, may cause harmful interference to radio communications. However, there is no guarantee that interference will not occur in a particular installation. If this equipment does cause harmful interference to radio or television reception, which can be determined by turning the equipment off and on, the user is encouraged to try to correct the interference by one or more of the following measures:

- Reorient or relocate the receiving antenna.
- Increase the separation between the equipment and receiver.
- Connect the equipment into an outlet on a circuit different from that to which the receiver is connected.
- Consult the dealer or an experienced radio/TV technician for help.

This device and its antenna(s) must not be co-located or operating in conjunction with any other antenna or transmitter

*RF warning for Mobile device:

This equipment complies with FCC radiation exposure limits set forth for an uncontrolled environment. This equipment should be installed and operated with minimum distance 20cm between the radiator & your body.