




EMC TEST REPORT



Report No.: 15050005-FCC-E1

Supersede Report No.: N/A

Applicant	NINGBO BIRD CO., LTD	
Product Name	Mobile phone	
Model No.	A5005	
Serial No.	N/A	
Test Standard	FCC Part 15 Subpart B Class B:2014, ANSI C63.4: 2014	
Test Date	Apr. 02 to Apr. 03, 2015	
Issue Date	Apr. 14, 2015	
Test Result	<input checked="" type="checkbox"/> Pass <input type="checkbox"/> Fail	
Equipment complied with the specification <input checked="" type="checkbox"/>		
Equipment did not comply with the specification <input type="checkbox"/>		
		
Kahn Yang Test Engineer	Chris You Checked By	
This test report may be reproduced in full only Test result presented in this test report is applicable to the tested sample only		

Issued by:

SIEMIC (SHENZHEN-CHINA) LABORATORIES

Zone A, Floor 1, Building 2 Wan Ye Long Technology Park

South Side of Zhoushi Road, Bao' an District, Shenzhen, Guangdong China 518108

Phone: +86 0755 2601 4629801 Email: China@siemic.com.cn

Laboratories Introduction

SIEMIC, headquartered in the heart of Silicon Valley, with superior facilities in US and Asia, is one of the leading independent testing and certification facilities providing customers with one-stop shop services for Compliance Testing and Global Certifications.



In addition to testing and certification, SIEMIC provides initial design reviews and compliance management throughout a project. Our extensive experience with China, Asia Pacific, North America, European, and International compliance requirements, assures the fastest, most cost effective way to attain regulatory compliance for the global markets.

Accreditations for Conformity Assessment

Country/Region	Scope
USA	EMC, RF/Wireless, SAR, Telecom
Canada	EMC, RF/Wireless, SAR, Telecom
Taiwan	EMC, RF, Telecom, SAR, Safety
Hong Kong	RF/Wireless, SAR, Telecom
Australia	EMC, RF, Telecom, SAR, Safety
Korea	EMI, EMS, RF, SAR, Telecom, Safety
Japan	EMI, RF/Wireless, SAR, Telecom
Singapore	EMC, RF, SAR, Telecom
Europe	EMC, RF, SAR, Telecom, Safety

Test Report	15050005-FCC-E1
Page	3 of 28

This page has been left blank intentionally.

CONTENTS

1. REPORT REVISION HISTORY	5
2. CUSTOMER INFORMATION	5
3. TEST SITE INFORMATION	5
4. EQUIPMENT UNDER TEST (EUT) INFORMATION	6
5. TEST SUMMARY	8
6. MEASUREMENTS, EXAMINATION AND DERIVED RESULTS	9
6.1 AC POWER LINE CONDUCTED EMISSIONS	9
6.2 RADIATED EMISSIONS	13
ANNEX A. TEST INSTRUMENT	17
ANNEX B. EUT AND TEST SETUP PHOTOGRAPHS	18
ANNEX C. TEST SETUP AND SUPPORTING EQUIPMENT	24
ANNEX D. USER MANUAL / BLOCK DIAGRAM / SCHEMATICS / PARTLIST	27
ANNEX E. DECLARATION OF SIMILARITY	28

1. Report Revision History

Report No.	Report Version	Description	Issue Date
15050005-FCC-E1	NONE	Original	Apr. 14, 2015

2. Customer information

Applicant Name	NINGBO BIRD CO., LTD
Applicant Add	No.999, Dacheng East Road, Fenghua City, Zhejiang Province
Manufacturer	NINGBO BIRD CO., LTD
Manufacturer Add	No.999, Dacheng East Road, Fenghua City, Zhejiang Province

3. Test site information

Lab performing tests	SIEMIC (Shenzhen-China) LABORATORIES
Lab Address	Zone A, Floor 1, Building 2 Wan Ye Long Technology Park South Side of Zhoushi Road, Bao' an District, Shenzhen, Guangdong China 518108
FCC Test Site No.	718246
IC Test Site No.	4842E-1
Test Software	Radiated Emission Program-To Shenzhen v2.0

4. Equipment under Test (EUT) Information

Description of EUT: Mobile phone

Main Model: A5005

Serial Model: N/A

Date EUT received: Apr. 01, 2015

Test Date(s): Apr. 02 to Apr. 03, 2015

Equipment Category : JBP

Antenna Gain: GSM850: -2.2 dBi
PCS1900: -1.8 dBi
UMTS-FDD Band 5/ Band 2/ Band 4: -2 dBi
Bluetooth: -1 dBi
WIFI: -3 dBi

Type of Modulation: GSM / GPRS: GMSK
EGPRS: GMSK, 8PSK
UMTS-FDD: QPSK
802.11b/g/n: DSSS, OFDM
Bluetooth: GFSK, π /4DQPSK, 8DPSK

RF Operating Frequency (ies): GSM850 TX: 824.2 ~ 848.8 MHz; RX: 869.2 ~ 893.8 MHz
PCS1900 TX: 1850.2 ~ 1909.8 MHz; RX: 1930.2 ~ 1989.8 MHz
UMTS-FDD Band 5 TX: 826.4 ~ 846.6 MHz; RX: 871.4 ~ 891.6 MHz
UMTS-FDD Band 2 TX: 1852.4 ~ 1907.6 MHz;
RX: 1932.4 ~ 1987.6 MHz
UMTS-FDD Band 4 TX : 1712.4 ~ 1752.6 MHz;
RX : 2112.4 ~ 2152.6 MHz
WIFI: 802.11b/g/n(20M): 2412-2462 MHz
WIFI: 802.11n(40M): 2422-2452 MHz
Bluetooth: 2402-2480 MHz

Test Report	15050005-FCC-E1
Page	7 of 28

Number of Channels:	GSM 850: 124CH
	PCS1900: 299CH
	UMTS-FDD Band V : 102CH
	UMTS-FDD Band II : 277CH
	UMTS-FDD Band IV: 202CH
	WIFI :802.11b/g/n(20M): 11CH
	WIFI :802.11n(40M): 7CH
	Bluetooth: 79CH
Port:	Power Port, Earphone Port, USB Port
Input Power:	Battery:
	Model: A5005
	Spec: 3.7V 1900mAh
	Limited charger voltage: 4.2V
	Adapter:
	Model: BIRD
	Input: AC 100-240V; 50/60Hz 0.15A
	Output: DC 5.0V; 500mA
Trade Name :	BIRD
GPRS/EGPRS Multi-slot class	8/10/12
FCC ID:	SNM-5005

5. Test Summary

The product was tested in accordance with the following specifications.

All testing has been performed according to below product classification:

FCC Rules	Description of Test	Result
§15.107; ANSI C63.4: 2014	AC Power Line Conducted Emissions	Compliance
§15.109; ANSI C63.4: 2014	Radiated Emissions	Compliance

Measurement Uncertainty


Emissions		
Test Item	Description	Uncertainty
Band Edge and Radiated Spurious Emissions	Confidence level of approximately 95% (in the case where distributions are normal), with a coverage factor of 2 (for EUTs < 0.5m X 0.5m X 0.5m)	+5.6dB/-4.5dB
-	-	-

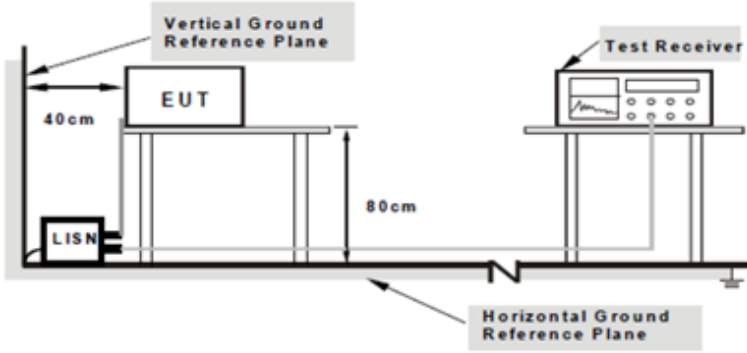
6. Measurements, Examination And Derived Results

6.1 AC Power Line Conducted Emissions

Temperature:	24°C
Relative Humidity:	58%
Atmospheric Pressure:	1009mbar
Test date:	Apr. 02, 2015
Tested By:	Kahn Yang

Requirement(s):

Spec	Item	Requirement	Applicable														
47CFR§15.107	a)	For Low-power radio-frequency devices that is designed to be connected to the public utility (AC) power line, the radio frequency voltage that is conducted back onto the AC power line on any frequency or frequencies, within the band 150 kHz to 30 MHz, shall not exceed the limits in the following table, as measured using a 50 [mu] H/50 ohms line impedance stabilization network (LISN). The lower limit applies at the boundary between the frequencies ranges.															
		<table><tr><th rowspan="2">Frequency ranges (MHz)</th><th colspan="2">Limit (dBµV)</th></tr><tr><th>QP</th><th>Average</th></tr><tr><td>0.15 ~ 0.5</td><td>66 – 56</td><td>56 – 46</td></tr><tr><td>0.5 ~ 5</td><td>56</td><td>46</td></tr><tr><td>5 ~ 30</td><td>60</td><td>50</td></tr></table>	Frequency ranges (MHz)	Limit (dBµV)		QP	Average	0.15 ~ 0.5	66 – 56	56 – 46	0.5 ~ 5	56	46	5 ~ 30	60	50	
Frequency ranges (MHz)	Limit (dBµV)																
	QP	Average															
0.15 ~ 0.5	66 – 56	56 – 46															
0.5 ~ 5	56	46															
5 ~ 30	60	50															

Test Setup	 <p>Note: 1.Support units were connected to second LISN. 2.Both of LISNs (AMN) are 80cm from EUT and at least 80cm from other units and other metal planes support units.</p>
------------	---

Procedure	<ol style="list-style-type: none"> The EUT and supporting equipment were set up in accordance with the requirements of the standard on top of a 1.5m x 1m x 0.8m high, non-metallic table. The power supply for the EUT was fed through a 50W/50mH EUT LISN, connected to filtered mains.
-----------	---

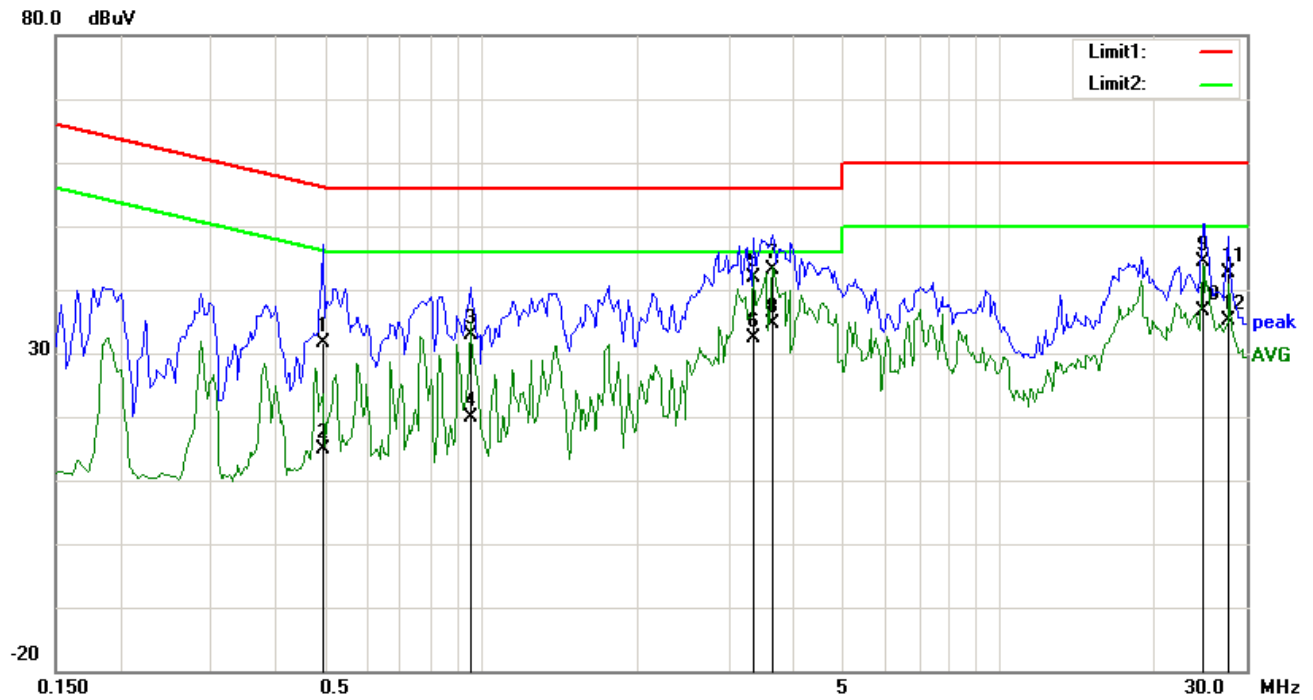
Test Report	15050005-FCC-E1
Page	10 of 28

	<p>3. The RF OUT of the EUT LISN was connected to the EMI test receiver via a low-loss coaxial cable.</p> <p>4. All other supporting equipment were powered separately from another main supply.</p> <p>5. The EUT was switched on and allowed to warm up to its normal operating condition.</p> <p>6. A scan was made on the NEUTRAL line (for AC mains) or Earth line (for DC power) over the required frequency range using an EMI test receiver.</p> <p>7. High peaks, relative to the limit line, The EMI test receiver was then tuned to the selected frequencies and the necessary measurements made with a receiver bandwidth setting of 10 kHz.</p> <p>8. Step 7 was then repeated for the LIVE line (for AC mains) or DC line (for DC power).</p>
Remark	
Result	<input checked="" type="checkbox"/> Pass <input type="checkbox"/> Fail

Test Data ☒ Yes ☐ N/A

Test Plot ☒ Yes (See below) ☐ N/A

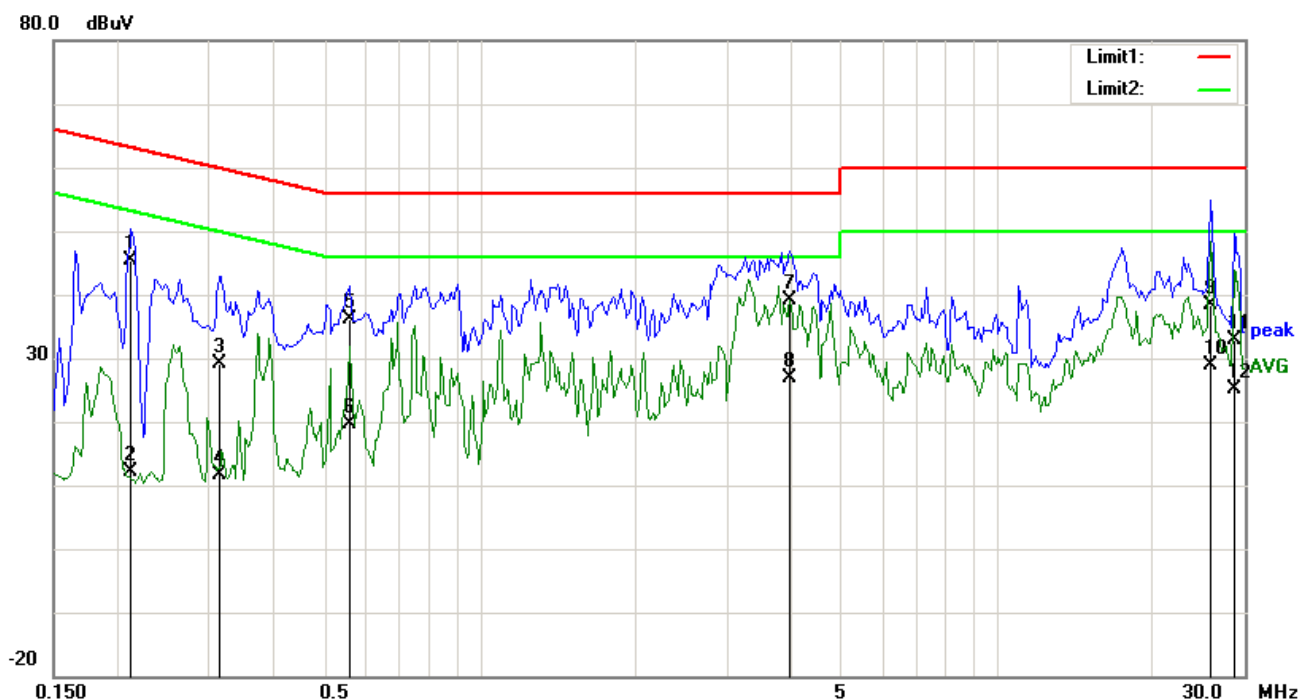
Test Mode: USB Mode



Test Data

Phase Line Plot at 120Vac, 60Hz

No.	P/L	Frequency (MHz)	Reading (dBμV/m)	Detector	Corrected (dB/m)	Result (dBμV/m)	Limit (dBμV/m)	Margin (dB)
1	L1	0.4938	20.39	QP	11.14	31.53	56.10	-24.57
2	L1	0.4938	3.86	AVG	11.14	15.00	46.10	-31.10
3	L1	0.9508	21.84	QP	10.92	32.76	56.00	-23.24
4	L1	0.9508	9.07	AVG	10.92	19.99	46.00	-26.01
5	L1	3.3633	30.92	QP	10.90	41.82	56.00	-14.18
6	L1	3.3633	21.44	AVG	10.90	32.34	46.00	-13.66
7	L1	3.6484	32.28	QP	10.90	43.18	56.00	-12.82
8	L1	3.6484	23.82	AVG	10.90	34.72	46.00	-11.28
9	L1	24.7734	33.54	QP	10.90	44.44	60.00	-15.56
10	L1	24.7734	25.66	AVG	10.90	36.56	50.00	-13.44
11	L1	27.6992	31.77	QP	10.90	42.67	60.00	-17.33
12	L1	27.6992	24.31	AVG	10.90	35.21	50.00	-14.79



Test Data

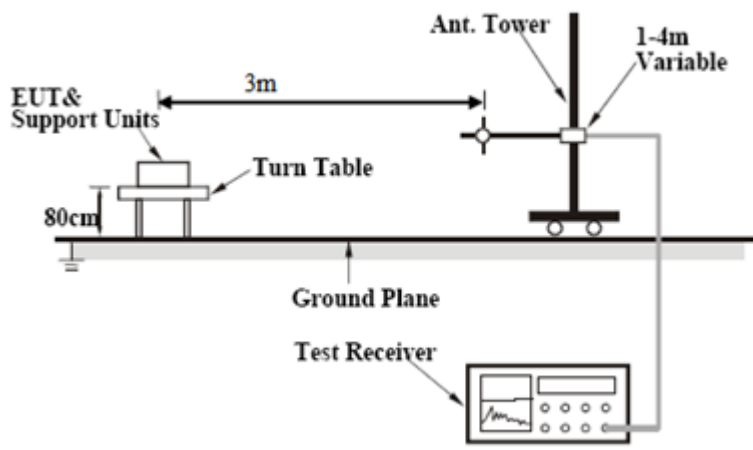
Phase Neutral Plot at 120Vac, 60Hz

No.	P/L	Frequency (MHz)	Reading (dBμV/m)	Detector	Corrected (dB/m)	Result (dBμV/m)	Limit (dBμV/m)	Margin (dB)
1	N	0.2125	45.38	QP	0.00	45.38	63.11	-17.73
2	N	0.2125	12.02	AVG	0.00	12.02	53.11	-41.09
3	N	0.3141	29.24	QP	0.00	29.24	59.86	-30.62
4	N	0.3141	11.51	AVG	0.00	11.51	49.86	-38.35
5	N	0.5602	36.24	QP	0.00	36.24	56.00	-19.76
6	N	0.5602	19.63	AVG	0.00	19.63	46.00	-26.37
7	N	3.9648	39.12	QP	0.00	39.12	56.00	-16.88
8	N	3.9648	26.84	AVG	0.00	26.84	46.00	-19.16
9	N	25.7891	38.46	QP	0.00	38.46	60.00	-21.54
10	N	25.7891	28.76	AVG	0.00	28.76	50.00	-21.24
11	N	28.7031	32.78	QP	0.00	32.78	60.00	-27.22
12	N	28.7031	25.17	AVG	0.00	25.17	50.00	-24.83

6.2 Radiated Emissions

Temperature	23°C
Relative Humidity	58%
Atmospheric Pressure	1009mbar
Test date :	Apr. 03, 2015
Tested By :	Kahn Yang

Requirement(s):

Spec	Item	Requirement	Applicable										
47CFR§15.107(d)	a)	Except higher limit as specified elsewhere in other section, the emissions from the low-power radio-frequency devices shall not exceed the field strength levels specified in the following table and the level of any unwanted emissions shall not exceed the level of the fundamental emission. The tighter limit applies at the band edges	<div><input checked="" type="checkbox"/></div>										
		<table><tr><th>Frequency range (MHz)</th><th>Field Strength (µV/m)</th></tr><tr><td>30 – 88</td><td>100</td></tr><tr><td>88 – 216</td><td>150</td></tr><tr><td>216 960</td><td>200</td></tr><tr><td>Above 960</td><td>500</td></tr></table>		Frequency range (MHz)	Field Strength (µV/m)	30 – 88	100	88 – 216	150	216 960	200	Above 960	500
		Frequency range (MHz)		Field Strength (µV/m)									
		30 – 88		100									
		88 – 216		150									
		216 960		200									
Above 960	500												
Test Setup	<div></div>												
Procedure	<div><div>1.</div><div>The EUT was switched on and allowed to warm up to its normal operating condition.</div><div>2.</div><div>The test was carried out at the selected frequency points obtained from the EUT characterization. Maximization of the emissions, was carried out by rotating the EUT, changing the antenna polarization, and adjusting the antenna height in the following manner:</div><div>a.</div><div>Vertical or horizontal polarization (whichever gave the higher emission level</div></div>												

Test Report	15050005-FCC-E1
Page	14 of 28

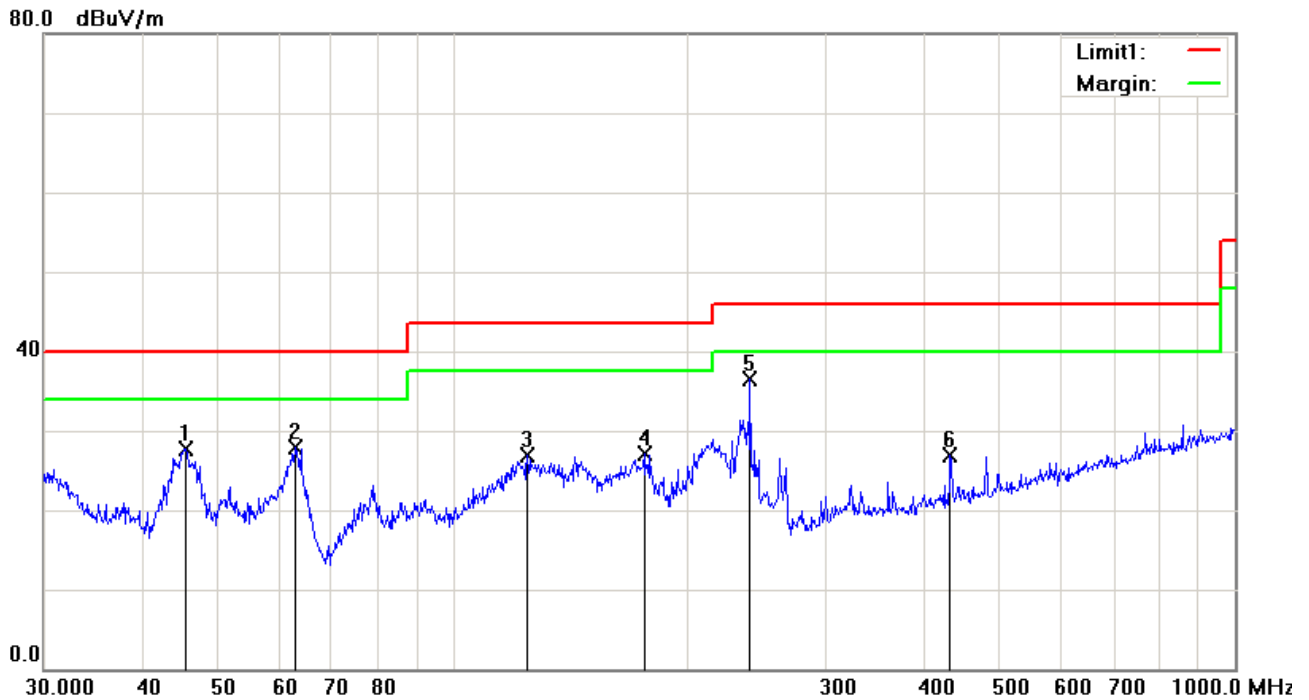
	<p>over a full rotation of the EUT) was chosen.</p> <p>b. The EUT was then rotated to the direction that gave the maximum emission.</p> <p>c. Finally, the antenna height was adjusted to the height that gave the maximum emission.</p> <p>3. The resolution bandwidth and video bandwidth of test receiver/spectrum analyzer is 120 kHz for Quasi Peak detection at frequency below 1GHz.</p> <p>4. The resolution bandwidth of test receiver/spectrum analyzer is 1MHz and video bandwidth is 3MHz with Peak detection for Peak measurement at frequency above 1GHz.</p> <p>The resolution bandwidth of test receiver/spectrum analyzer is 1MHz and the video bandwidth with Peak detection for Average Measurement as below at frequency above 1GHz.</p> <p>■ 1 kHz (Duty cycle < 98%) □ 10 Hz (Duty cycle > 98%)</p> <p>5. Steps 2 and 3 were repeated for the next frequency point, until all selected frequency points were measured.</p>
Remark	
Result	<input checked="" type="checkbox"/> Pass <input type="checkbox"/> Fail

Test Data ☒ Yes ☐ N/A

Test Plot ☒ Yes (See below) ☐ N/A

Test Mode:	USB Mode
------------	----------

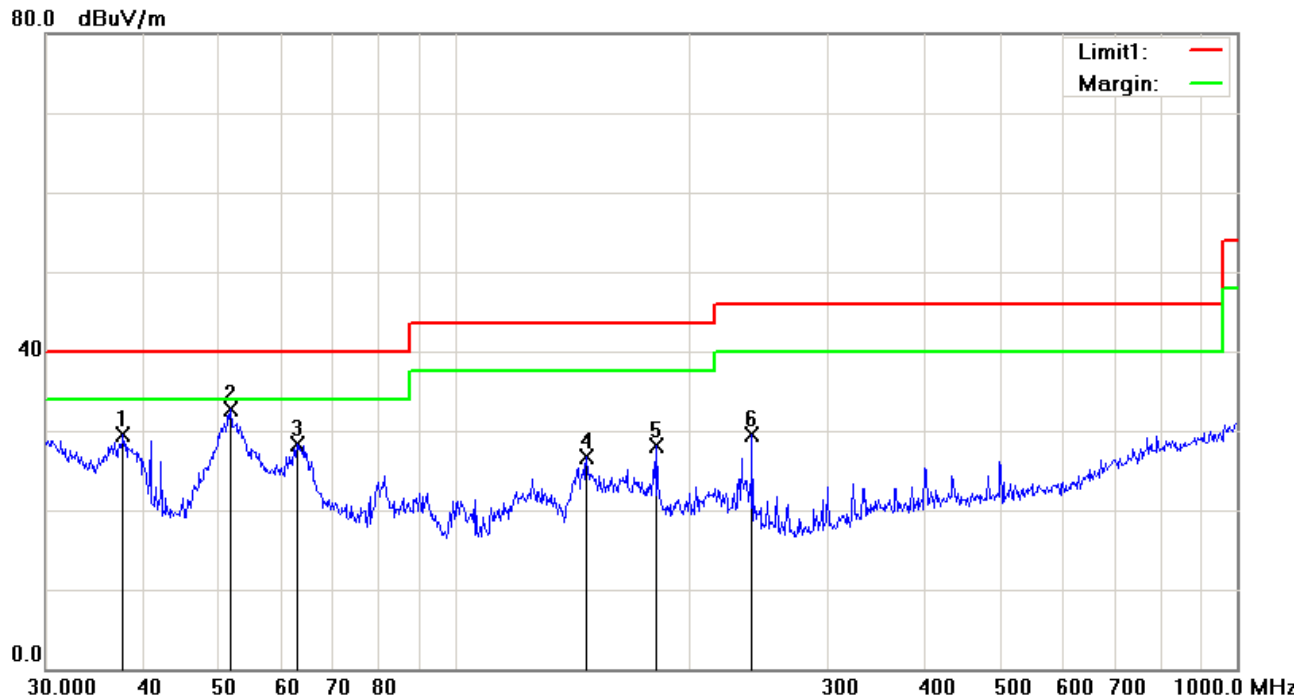
Below 1GHz



Test Data

Horizontal Polarity Plot @3m

No.	P/L	Frequency (MHz)	Reading (dBμV/m)	Detector	Corrected (dB/m)	Result (dBμV/m)	Limit (dBμV/m)	Margin (dB)	Height (cm)	Degree (°)
1	H	45.5348	29.47	peak	-1.71	27.76	40.00	-12.24	200	147
2	H	62.8708	41.98	peak	-14.14	27.84	40.00	-12.16	200	174
3	H	124.5690	34.43	peak	-7.59	26.84	43.50	-16.66	200	102
4	H	175.6516	36.68	peak	-9.54	27.14	43.50	-16.36	100	145
5	H	239.9873	45.55	peak	-9.10	36.45	46.00	-9.55	100	163
6	H	432.5457	30.33	peak	-3.50	26.83	46.00	-19.17	100	201



Test Data

Vertical Polarity Plot @3m

No.	P/L	Frequency (MHz)	Reading (dBμV/m)	Detector	Corrected (dB/m)	Result (dBμV/m)	Limit (dBμV/m)	Margin (dB)	Height (cm)	Degree (°)
1	V	37.6798	35.42	peak	-5.87	29.55	40.00	-10.45	100	173
2	V	51.6616	46.86	peak	-14.09	32.77	40.00	-7.23	100	222
3	V	62.8708	42.23	peak	-13.99	28.24	40.00	-11.76	200	254
4	V	147.4036	34.10	peak	-7.42	26.68	43.50	-16.82	200	182
5	V	181.2834	36.95	peak	-8.84	28.11	43.50	-15.39	200	190
6	V	239.9873	36.85	peak	-7.30	29.55	46.00	-16.45	100	121

Note: The above 1GHz frequency was pre-scanned and the result which was 20dB lower than the limit line per 15.109 was not recorded.

Annex A. TEST INSTRUMENT

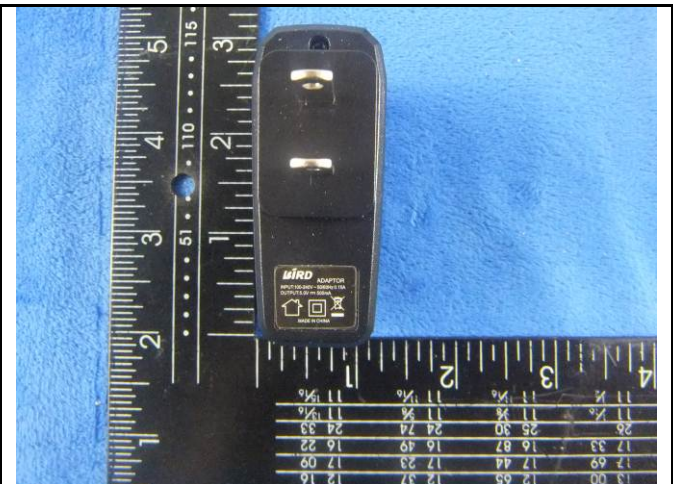
Instrument	Model	Serial #	Cal Date	Cal Due	In use
AC Line Conducted Emissions					
EMI test receiver	ESCS30	8471241027	09/18/2014	09/17/2015	<input checked="" type="checkbox"/>
Line Impedance Stabilization Network	LI-125A	191106	09/26/2014	09/25/2015	<input checked="" type="checkbox"/>
Line Impedance Stabilization Network	LI-125A	191107	09/26/2014	09/25/2015	<input checked="" type="checkbox"/>
LISN	ISN T800	34373	09/26/2014	09/25/2015	<input checked="" type="checkbox"/>
Transient Limiter	LIT-153	531118	09/02/2014	09/01/2015	<input checked="" type="checkbox"/>
Radiated Emissions					
EMI test receiver	ESL6	100262	09/18/2014	09/17/2015	<input checked="" type="checkbox"/>
OPT 010 AMPLIFIER (0.1-1300MHz)	8447E	2727A02430	09/02/2014	09/01/2015	<input checked="" type="checkbox"/>
Microwave Preamplifier (1 ~ 26.5GHz)	8449B	3008A02402	10/04/2015	10/04/2016	<input checked="" type="checkbox"/>
Bilog Antenna (30MHz~6GHz)	JB6	A110712	09/22/2014	09/21/2015	<input checked="" type="checkbox"/>
Double Ridge Horn Antenna	AH-118	71259	09/25/2014	09/24/2015	<input checked="" type="checkbox"/>

Annex B. EUT And Test Setup Photographs

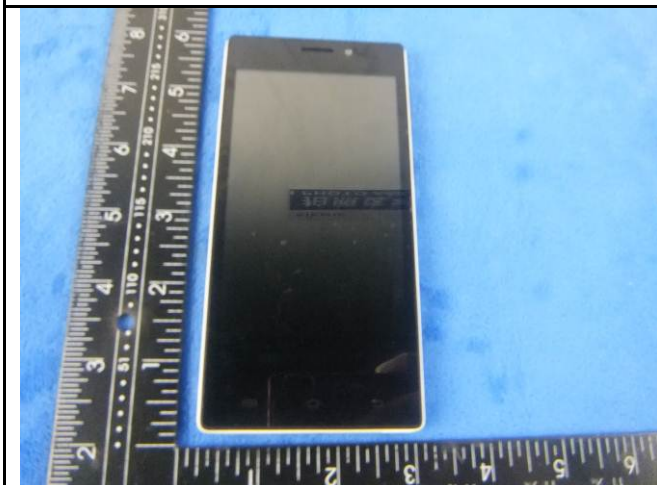
Annex B.i. Photograph: EUT External Photo



Whole Package - Top View



Adapter - Front View



EUT - Front View



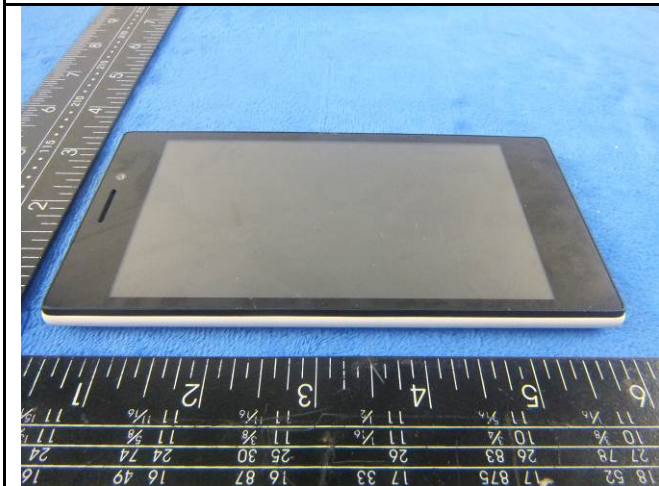
EUT - Rear View



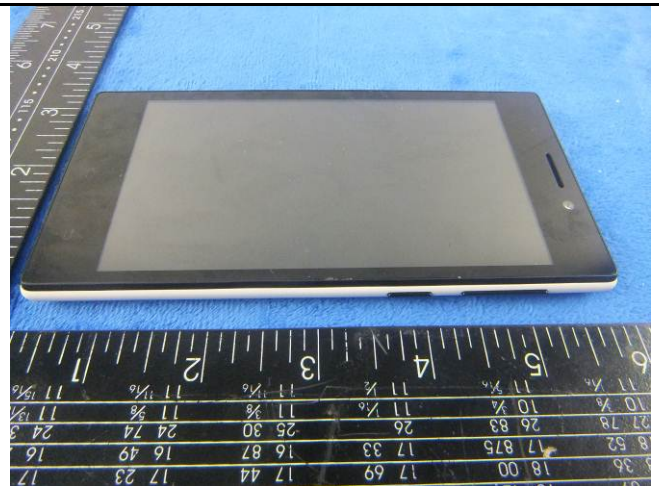
EUT - Top View



EUT - Bottom View



EUT - Left View

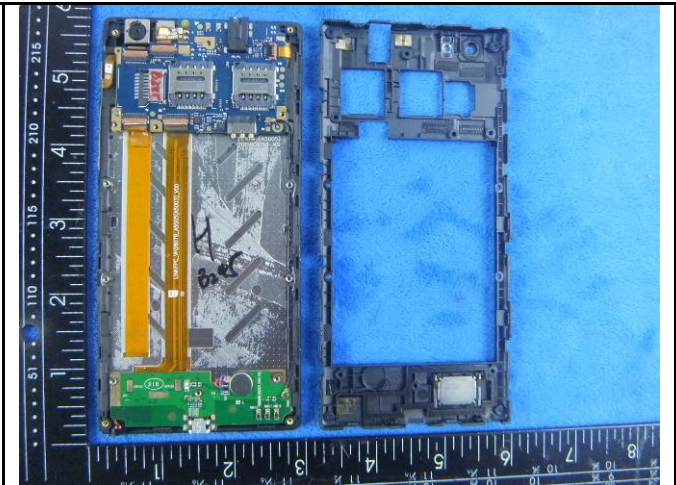


EUT - Right View

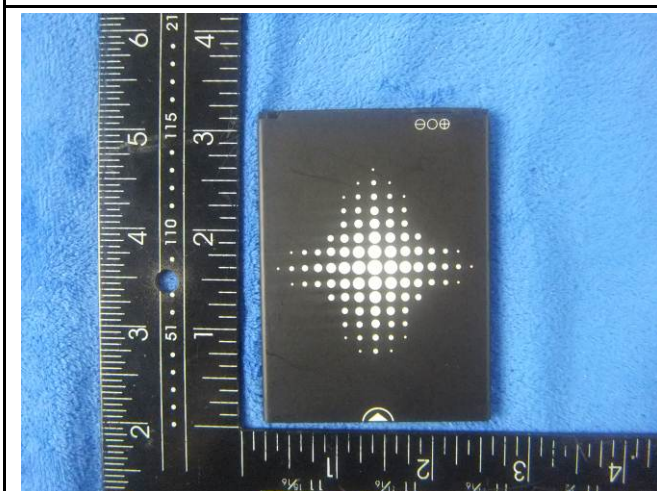
Annex B.ii. Photograph: EUT Internal Photo



Cover Off - Top View 1



Cover Off - Top View 2



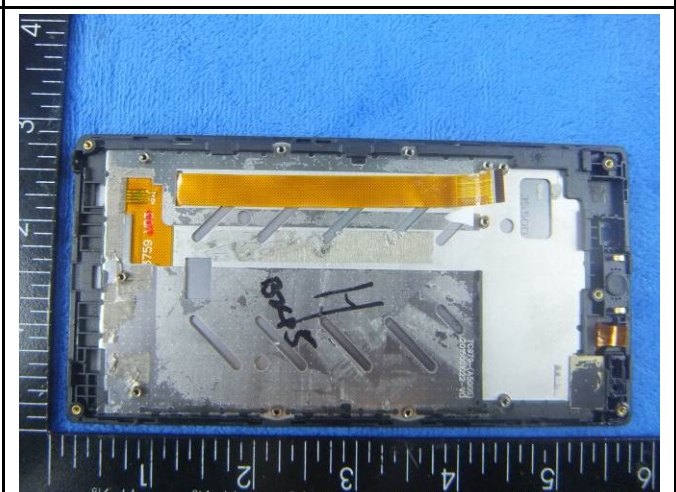
Battery - Top View



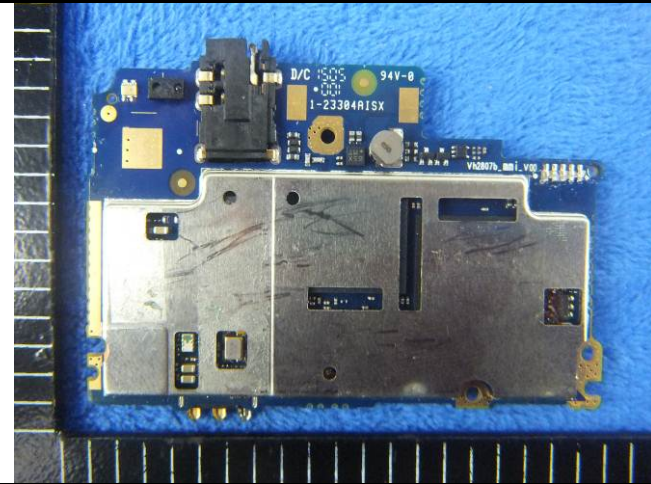
Battery - Bottom View



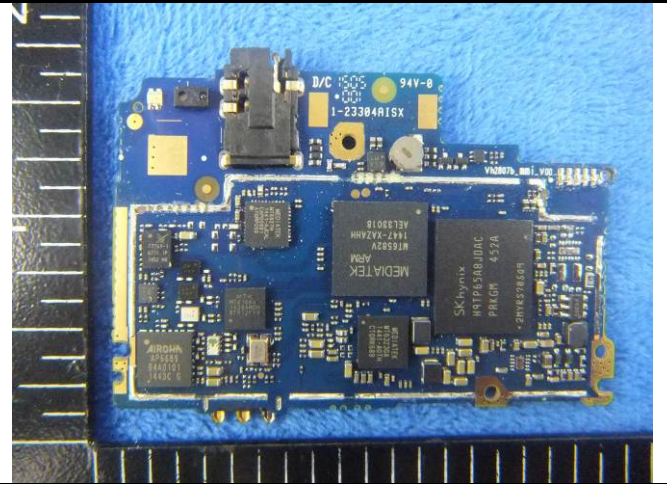
LCD - Front View



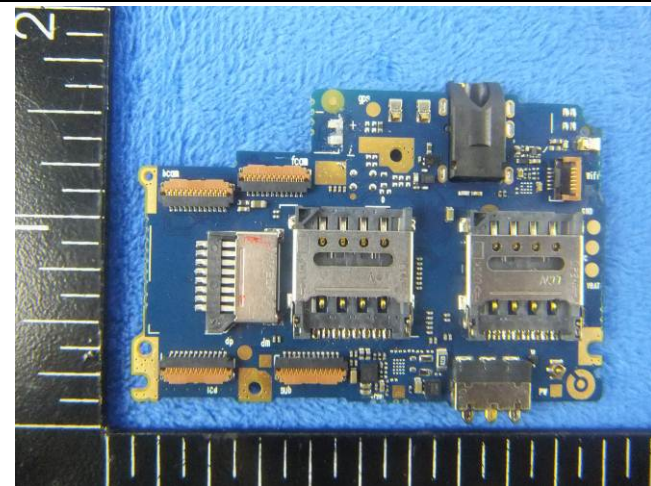
LCD - Rear View



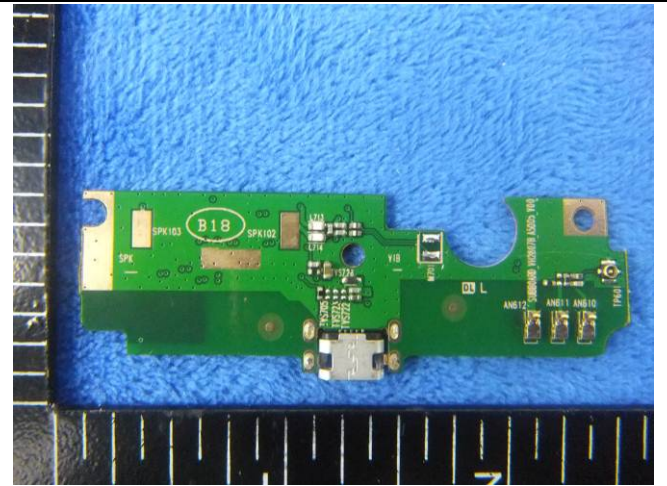
Mainboard With Shielding - Front View



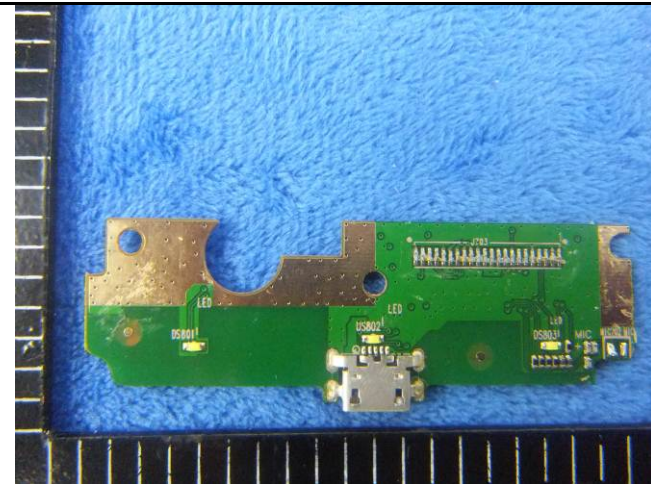
Mainboard Without Shielding - Front View



Mainboard - Rear View



Connect board - Front View



Connect board - Rear View

Test Report	15050005-FCC-E1
Page	22 of 28



GSM/PCS/UMTS-FDD Antenna View

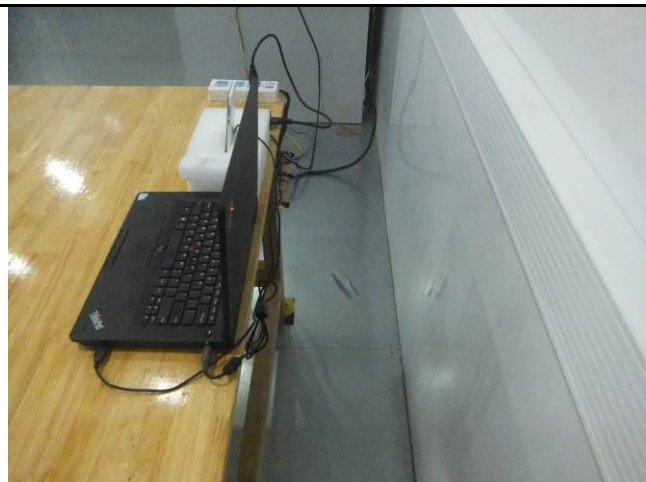


BT/ WIFI Antenna View

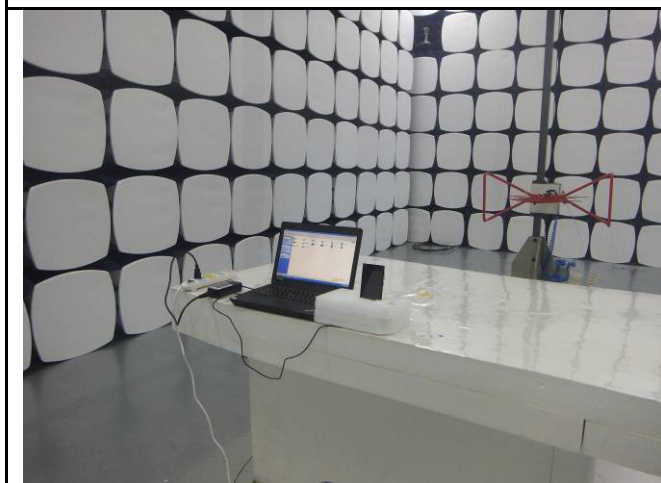
Annex B.iii. Photograph: Test Setup Photo



Conducted Emissions Test Setup Front View



Conducted Emissions Test Setup Side View



Radiated Spurious Emissions Test Setup Below 1GHz

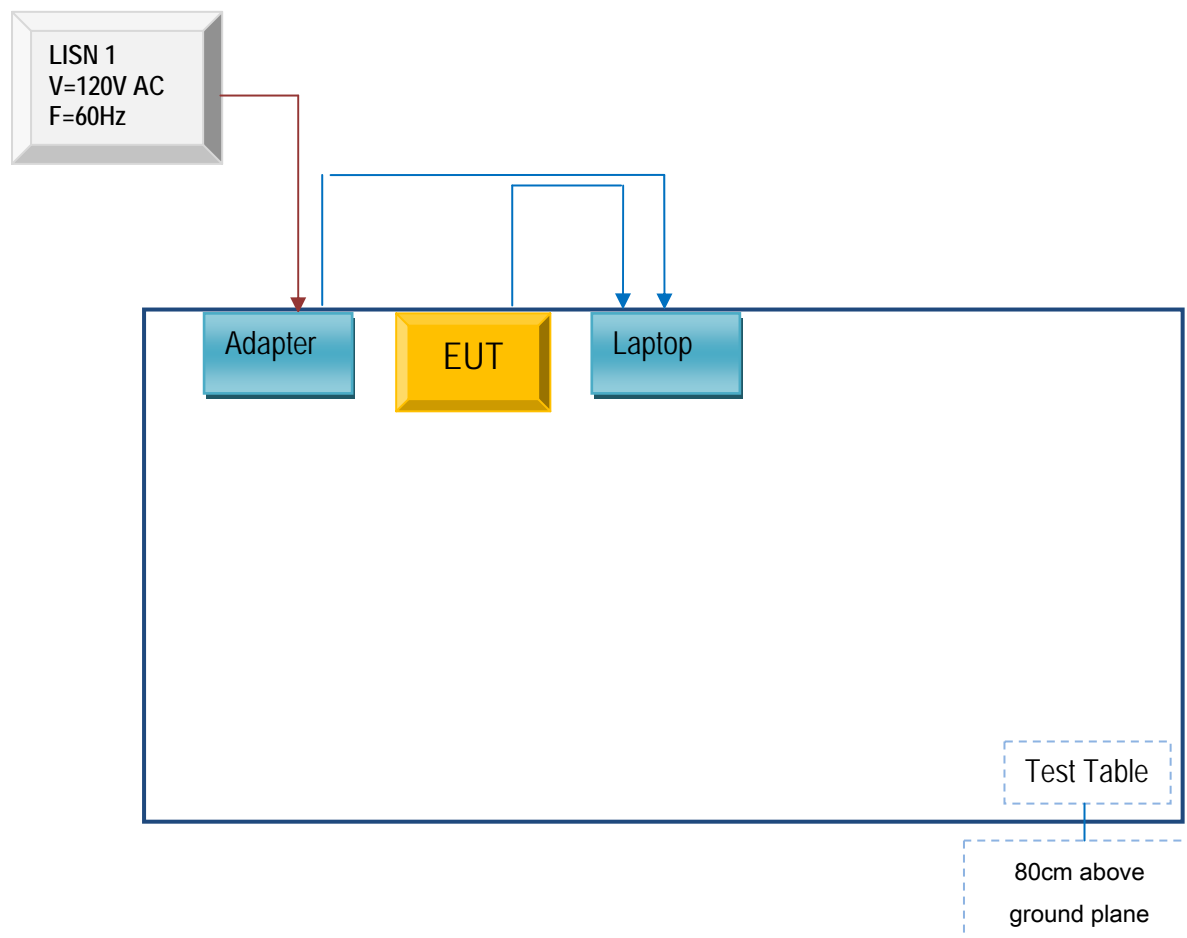


Radiated Spurious Emissions Test Setup Above
1GHz

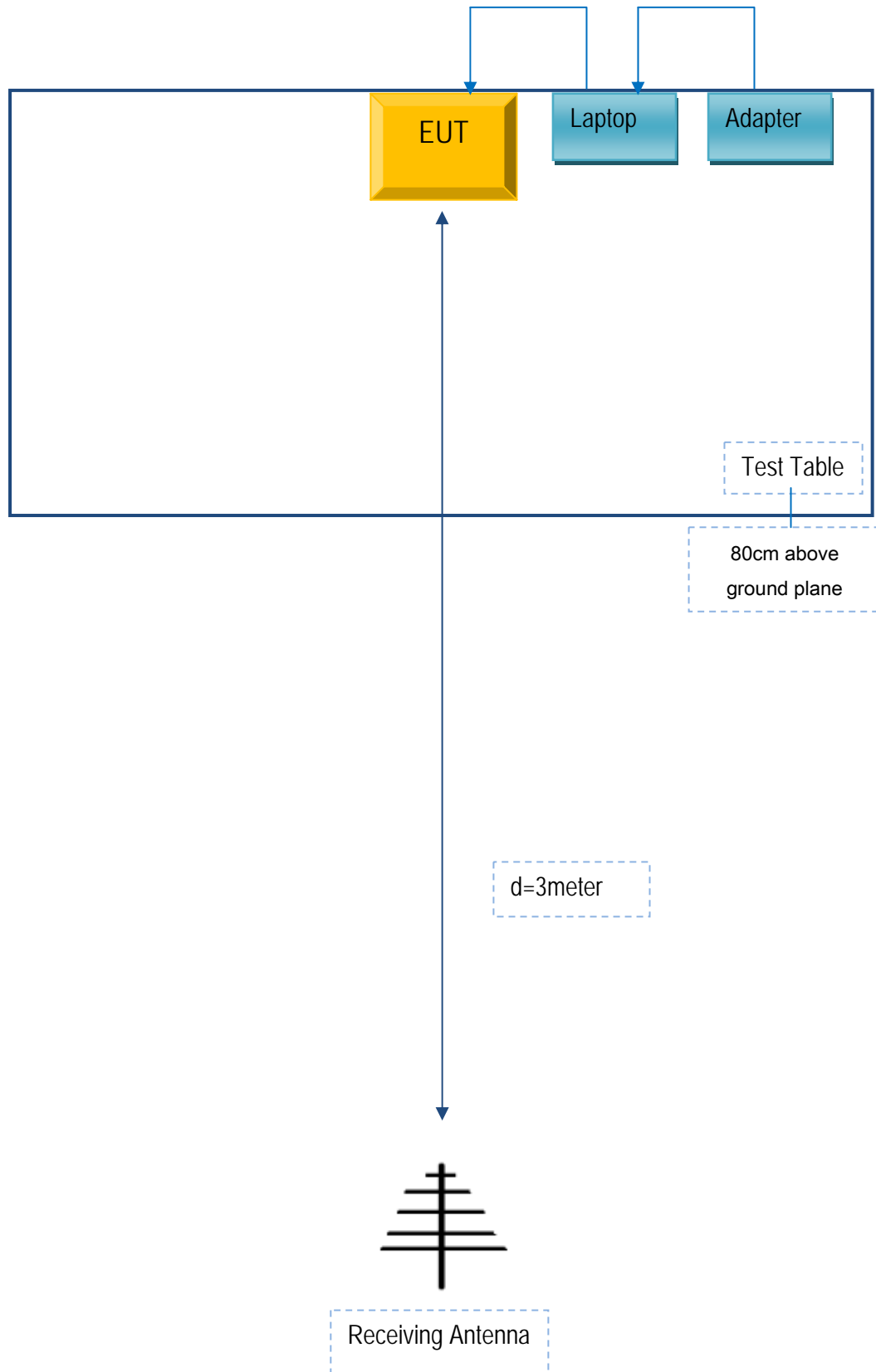
Annex C. TEST SETUP AND SUPPORTING EQUIPMENT

Annex C.ii. TEST SET UP BLOCK

Block Configuration Diagram for Conducted Emissions



Block Configuration Diagram for Radiated Emissions



Test Report	15050005-FCC-E1
Page	26 of 28

Annex C. ii. SUPPORTING EQUIPMENT DESCRIPTION

The following is a description of supporting equipment and details of cables used with the EUT.

Manufacturer	Equipment Description	Model	Calibration Date	Calibration Due Date
Lenovo	Lenovo Laptop	E40& 0579A52	N/A	N/A

Test Report	15050005-FCC-E1
Page	27 of 28

Annex D. User Manual / Block Diagram / Schematics / Partlist

Please see Attachment

Test Report	15050005-FCC-E1
Page	28 of 28

Annex E. DECLARATION OF SIMILARITY

N/A