



User Manual
Tablet (WS-MID-007)



**This manual contains important safety precautions and information of correct use.
Please be sure to read this manual carefully before use so as to avoid any accidents.**


Do not place the product in hot, wet or dusty environment, especially in summer, do not leave the product inside a car with all windows closed.

Avoid dropping, impacting or shaking the product violently, otherwise it may cause damages or malfunctions. Select a proper volume to avoid ear problem when using earphones.

Do not cross the road or drive vehicles, using headphones to avoid traffic accidents.

Be sure to use the provided chargers and accessories in the package.

Be sure to charge the product when the following situations take place,

- The battery icon shows lower or empty.
- System automatically shut down and it turns off soon after restart.
- Operation keys do not respond properly.
- The device shows  on the top right corner.

specification

Hardware	Software
9.0"High Definition TFTLCD Touch Screen(800x480 pixel)	Android 4.0 ICS
Capacitive multi-touch (5 touch) point function	Google browser
CPU: ARM cortex A8 processor	Wi-Fi connection
RAM : DDR3 512MB (3D accelerator possible for 3D games)	e-Book function (all e-book formats supported by application)
Wi-Fi (IEEE802.11 b/g/n) for internet connection	1080p HD file playback
USB host for OTG function	VoIP phone function with Wi-Fi connection
G-sensor	Possible to view/edit Ms office files by application
Micro SD card slot recognizing up to 32GB	Video: AVI, RM/ RMVB, FLV, MPG4 – 1, MPEG – 2 etc.
Built-in speaker & Built-in MIC & HDMI	Audio: MP3, WMA, AAC, WAV etc. Photo: JPEG, BMP, GIF, PNG, TIFF
5V DC power adapter	
Compatible with keyboard, mouse	

1. Power On/Off

Long press power button to turn on/off the device. It may take a minute to boot the device.
Short press power button to turn on/off the screen.(Standby mode. Refer to 3. below)

2. Desktop

After turning on the device, desktop displays with shortcut icons and arrow panel at the right side



3. Standby mode(Screen off mode) / Unlock the screen

Short press the power button to turn on/off the screen (standby mode on/off).
After standby mode o , slide the lock icon in order to unlock the screen.



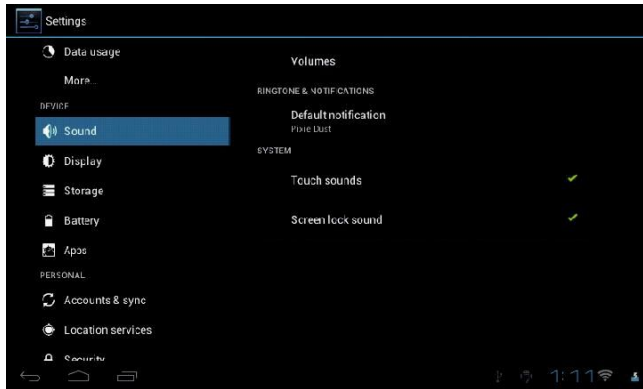
4. System settings

On the desktop, press menu button and select system settings.

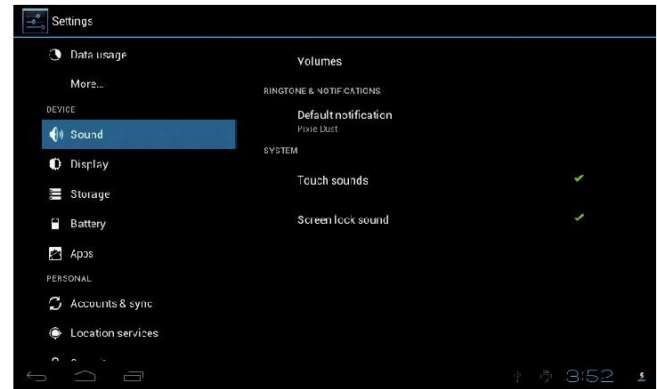


Press System Settings

1. Wireless & networks

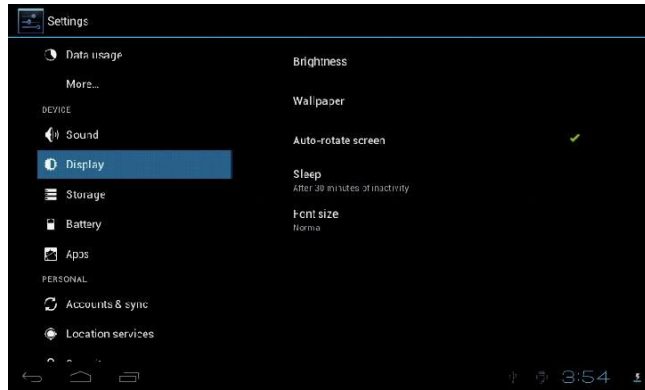


2. Sound



Wi-Fi – Press Wi-Fi to turn on/off Set up each setting as you like. Wi-Fi settings - Press Wi-Fi settings, then the device will automatically search the available Wi-Fi signals. Select the network you want to connect with.

3. Display



Set up each setting as you like.

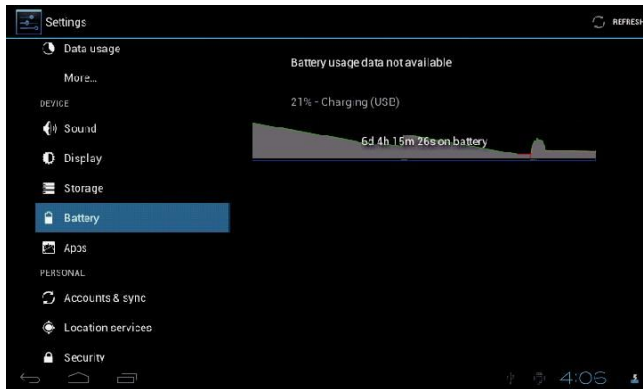
4. Storage



Check device memory and microSD card status. Unmount SD card – Unmount the SD card for safe removal.

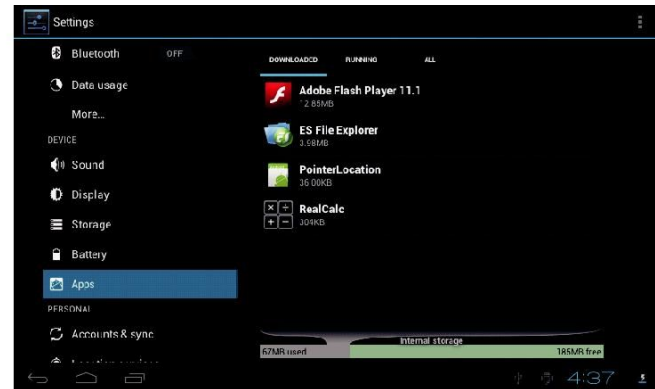
5. Battery

Check battery usage status.



6. Apps

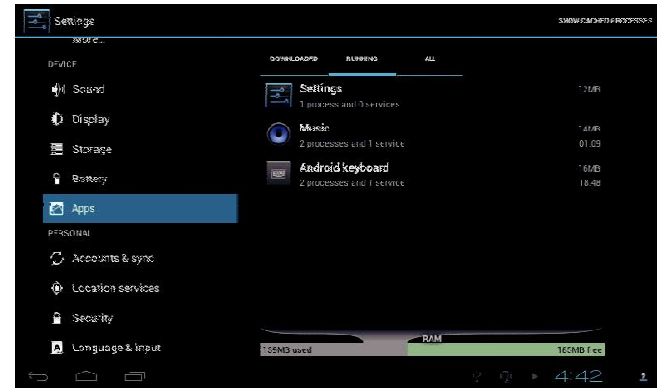
Manage downloaded or running applications.



Downloaded
All installed application are listing.



Keep pressing an application to manage.
Press Uninstall to uninstall the selected application.



Running services
View and control currently running services.

7. Account & sync

Create your account. After connecting Wi-Fi network, the e-mailing system synchronizes your account with the device. Emails are automatically downloaded into the device.

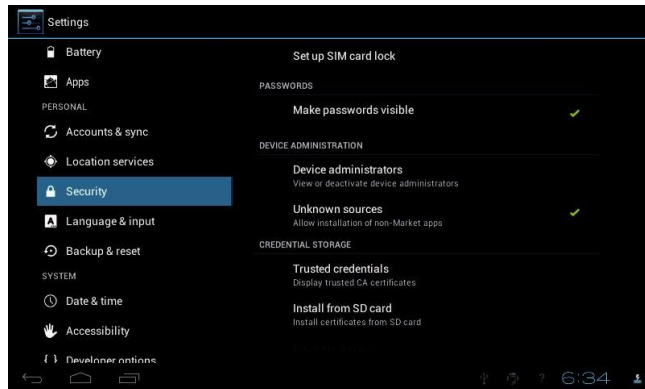
8. Location services

Google's location service - Let apps use data from sources such as WiFi and mobile networks to determine your approximate location

9. Security

Screen lock – Protect your device from unauthorized use by creating a personal screen unlock pattern. Make passwords visible – Show password as you type.

Unknown sources - If you want to allow installation of non-Market Applications, Press Unknown sources and presses OK.



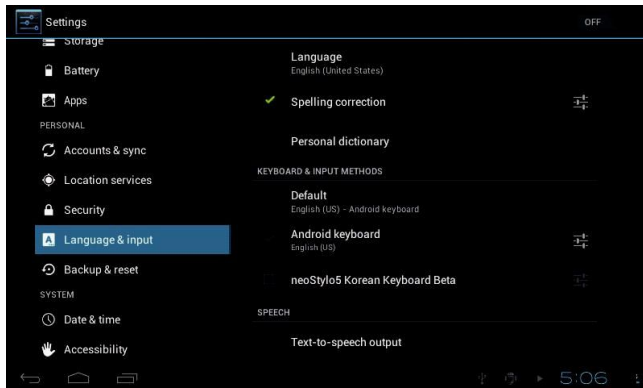
Install from SD card – Install encrypted certificates from SD card

10. Language & input

Language – Choose your preferable language.

Keyboard & input method – Change keyboard & keyboard settings.

On Language & input settings, if you need other languages besides English on keyboard, press the relevant keyboard and enter the chosen Keyboard settings, select Keyboards, press the language you need.



11. Date & time

Set date & time and format

12. Developer options

Set options for application development

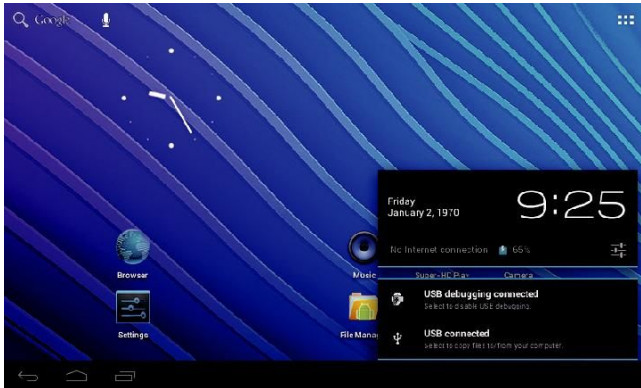
13. About tablet

See status, legal information, ETC

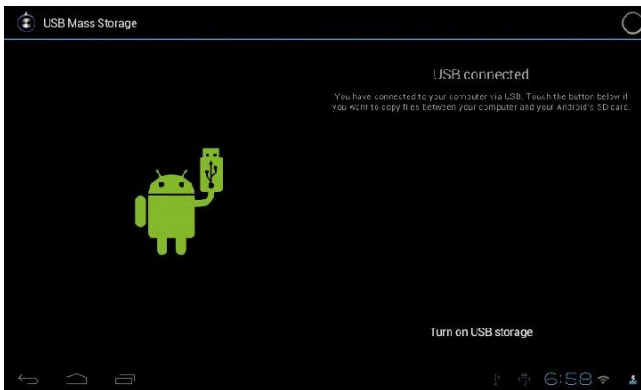
How to connect/disconnect the device with/from the computer

On main desktop, connect the device with the PC,
touch right side of the status bar on the bottom of desktop





Press “USB connected”, select “Turn on USB storage”.
The device is recognized at Explorer of the computer.
Now you can use it as an external storage.



After finishing your work,
Press “Turn off USB storage” to unmount it.

How to install Applications(.apk file) into the device

Method 1.

1. Connect the device with internet. See above [1.Wireless & networks] in order to connect internet.
2. Run “Getjar” and search the applications you want to install.
3. Follow the instruction on the screen for installation.

Method 2.

1. With your computer, search application file(.apk) that you want to install into the device.
2. Download the file(.apk) into your computer.
3. Connect the device with your computer.
See above [How to connect/disconnect the device with/from the computer.]
4. Copy and paste .apk file into the device and disconnect it from your computer.
5. Run “File browser” and find .apk file that was copied into the device.
6. Press the file to install and follow the instruction on the screen.

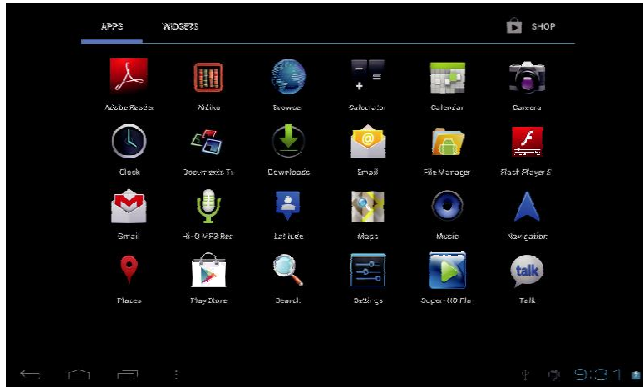
Note

Page 17

How to make desktop icons

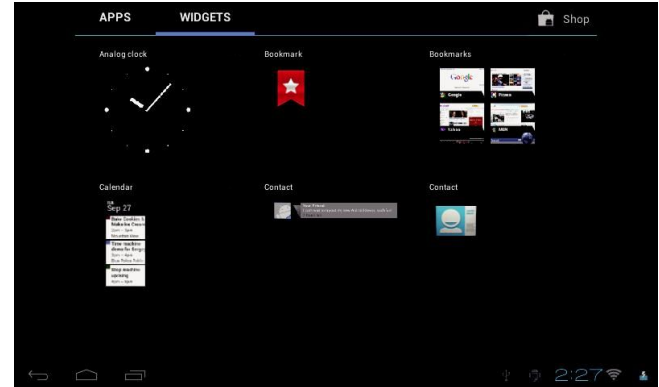
Press the upper right side icon of desktop, the pop-up displays.





Shortcuts

Long press your desired APK icon and put it on the desktop.



Widgets

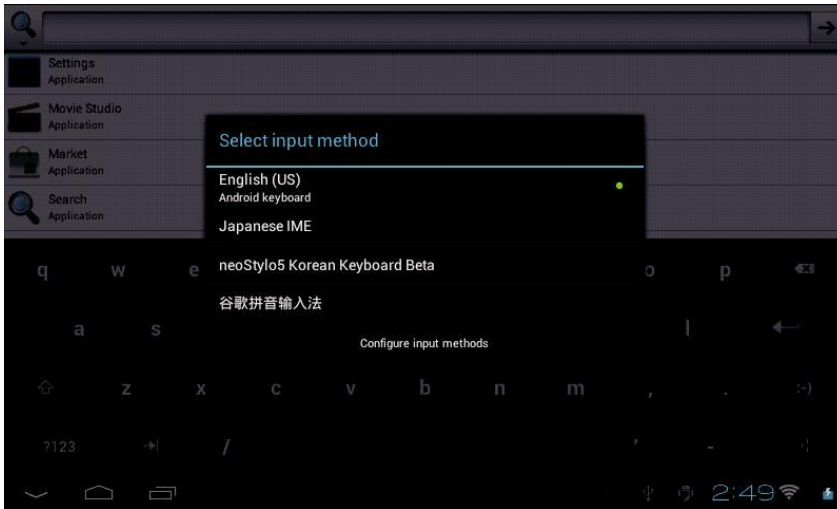
Press Widgets and press your desired icon to put it on the desktop.

Wallpaper

Long press the desktop, press Wallpapers and select one of categories of wallpaper. Select one you desire and press Set wallpaper.

Change Input Method

If your device was installed with other more input method, long press setting icon of keyboard, and the pop-up displays.



Select the installed keyboard, then the keyboard will appear with your desired language you installed.

Specification

OS		Android 4.0 ICS
CPU		ARM cortex A8 processor
SDRAM		DDR3 512MB
Display		9" TFT 800*480 Capacitive touch panel
Multi-touch screen		Yes : 5 point multi-touch
		4 / 8 GB
	Audio port	3.5ø earphones
	USB port	1 x 5pin micro USB port (support USB host and OTG)
	DC port	5V, 2A
IO PORTS	Micro SD	Micro SD card
	OTG port	Same with USB port
	Button	Power, VOL-, VOL+, reset,
Speaker		1.5W, Frequency response : 20Hz – 20k Hz, N/S : >85%
G-sensor		Yes
Camera		0.3M pixel (front)
Wi-Fi		802.11b/g/n
Power		Adaptor 5V -2A
Battery		3.7V Li-Polymer
Dimension		120 x 180 x 6mm
Charging time	by charger	approx. 3~4hours

FCC ID: SN4WS-MID-007

Shenzhen Well-share Industry co., ltd

Model name: Tablet Model No.: WS5406



This device complies with Part 15 of the FCC Rules. Operation is subject to the following two conditions: (1) this device may not cause harmful interference, and (2) this device must accept any interference received, including interference that may cause undesired operation.

Changes or modifications not expressly approved by the party responsible for compliance could void the user's authority to operate the equipment.

Note: This equipment has been tested and found to comply with the limits for a Class B digital device, pursuant to part 15 of the FCC Rules. These limits are designed to provide reasonable protection against harmful interference in a residential installation. This equipment generates, uses and can radiate radio frequency energy and, if not installed and used in accordance with the instructions, may cause harmful interference to radio communications. However, there is no guarantee that interference will not occur in a particular installation. If this equipment does cause harmful interference to radio or television reception, which can be determined by turning the equipment off and on, the user is encouraged to try to correct the interference by one or more of the following measures:

- Reorient or relocate the receiving antenna.
- Increase the separation between the equipment and receiver.
- Connect the equipment into an outlet on a circuit different from that to which the receiver is connected.
- Consult the dealer or an experienced radio/TV technician for help.

This device and its antenna(s) must not be co-located or operation in conjunction with any other antenna or transmitter.