

Revolution in Settlement System of PC Room by High-tech Computer Coinware!!
Coinware Corporation provides the best differentiated solution from H/W to S/W.



MANUAL

Coinware Corp. <http://www.coinware21.com>

< Title & Sequence >

1.FCC RF INTERFERENCE STATEMENT.....	1
2. System recommended capacity	2
3. Confirmatory points before installation	2
4. Precaution	3
5. Name of parts	5
6. How to install	6
6-1. Coinware installation	6
6-2. Program installation	10
6-2-1. Program for client	10
7. FND window error number list	12
8. Specification.....	12
9. Warranty	13

1.FCC RF INTERFERENCE STATEMENT

NOTE :

This equipment has been tested and found to comply with the limits for a Class B digital device, pursuant to Part 15 of the FCC Rules. These limits are designed to provide reasonable protection against harmful interference in a residential installation.

This equipment generates, uses and can radiate radio frequency energy and, if not installed and used in accordance with the instructions, may cause harmful interference to radio communications. However, there is no guarantee that interference will not occur in a particular installation.

If this equipment does cause harmful interference to radio or television reception which can be determined by turning the equipment off and on, the user is encouraged to try to correct the interference by one or more of the following measures.

- Reorient or relocate the receiving antenna.
- Increase the separation between the equipment and receiver.
- Connect the equipment into an outlet on a circuit different from that to which the receiver is connected.
- Consult the dealer or an experienced radio, TV technical for help.
- Only shielded interface cable should be used.

Finally, any changes or modifications to the equipment by the user not expressly approved by the grantee or manufacturer could void the users authority to operate such equipment

2. System Recommended Specification

- 1) MMX Pentium 233 MHz process or over (XP: Pentium II 300 MHz)
- 2) Windows 98 / XP
- 3) Minimum 64 M RAM (XP: 128M)
- 4) 3.5 FDD
- 5) Minimum 140M hard disk space capacity
- 6) 1024 * 768 pixels, color monitor of over 16 bit image quality
- 7) LAN CARD over 10M capacity
- 8) Space capacity of a computer mainframe 2 bay

3. Confirmatory Points Before Installation

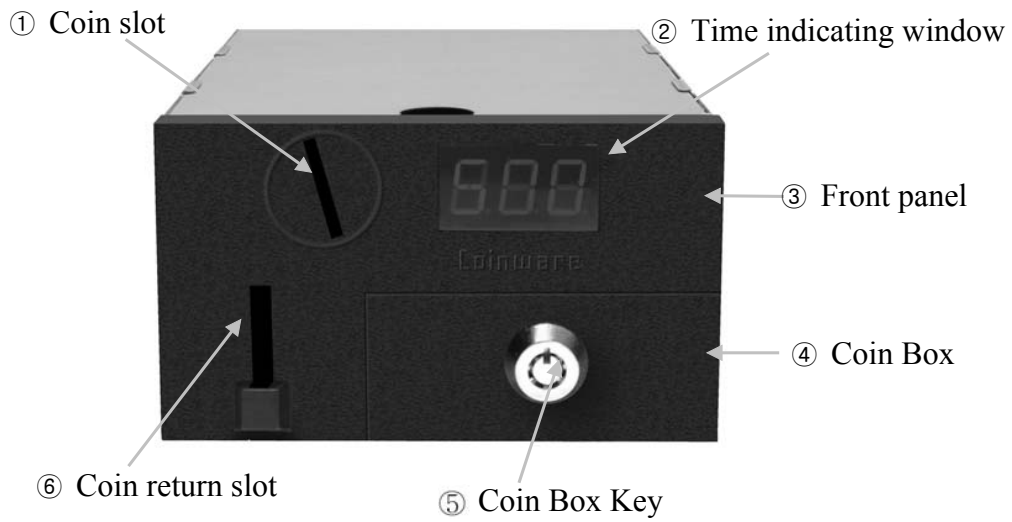
Please check the following contents before installation.

① Coinware mainframe	1
② RS-232C cable	1
③ M3 * 3 bolt	8
④ Manual	1
⑤ Coinware installation program CD	1
⑥ Coin box key	1
⑦ 2P 'Y'-shaped cable	1

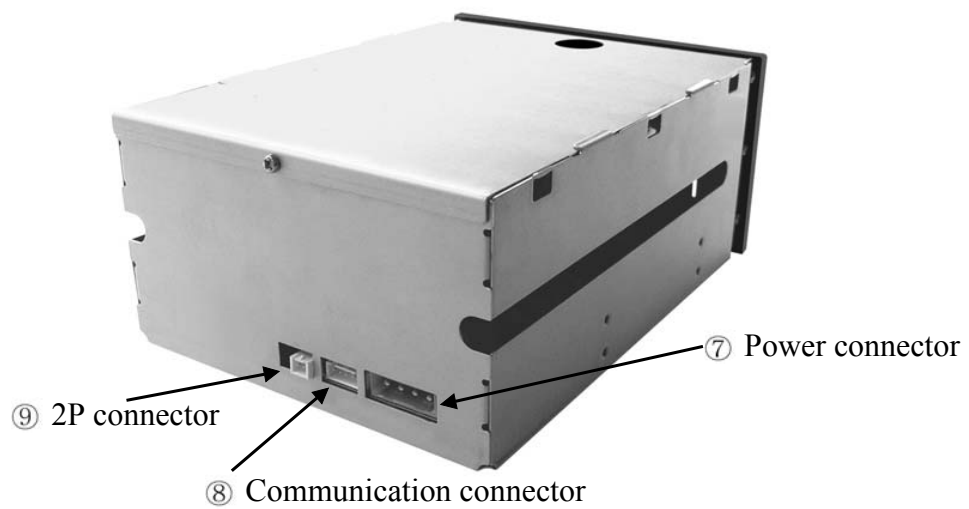
4. Precautions

- * After installing the program, please install the coinware.
- * Do not give an impact or drop the product because of its weakness to impact
- * Be careful of temperature and humidity
 - optimum temperature : 10°C ~ 30°C
 - optimum humidity : 20 %RH ~ 80 %RH
- * Before installing the coinware, please assemble it in the condition of turning off every power of the computer
- * Please connect the polarities of the power after checking
- * Do not disassemble and repair recklessly

Name of Part



Name of Part



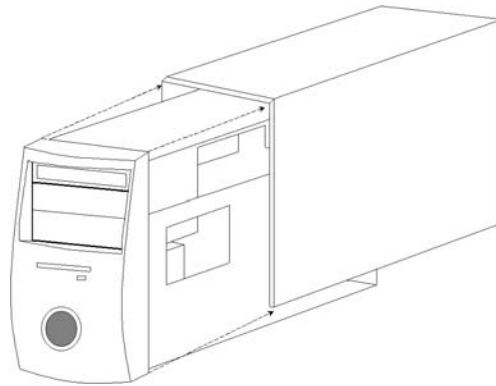
5. Name of Part

- 1) Coin slot : slot for inserting coins to use a computer
- 2) Time indicating window : indicate estimated usable time after inserting coins
- 3) Front panel : front coverlet of a coinware
- 4) Coin box : coin loaded box
- 5) Coin box key : key for locking the coin box
- 6) Coin return slot : slot for returning inferior coin
- 7) Power connector : connect the power from the power supply inside of the Computer
- 8) Communication connector : connect with the serial port of the computer
- 9) 2P connector : connect with the 2P 'Y'-shaped cable

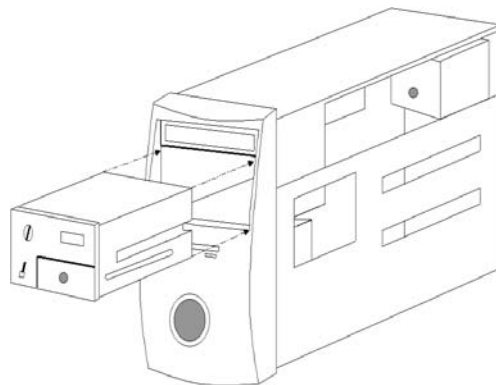
6 How to Install

6-1. Product Installation

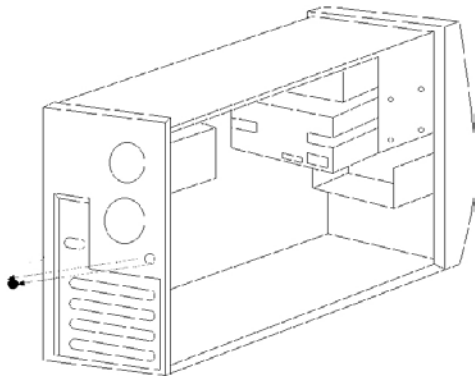
- 1) After turning off every power of the computer, remove the coverlet of the computer mainframe.



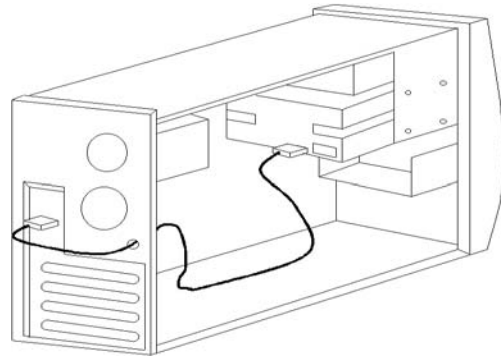
- 2) After removing the guide of the computer bay in which the coinware install, equip the coinware and then fix it with bolt



- 3) After removing the guide of the computer mainframe, put the cable into the computer mainframe, and connect to the coinware (communication connector)

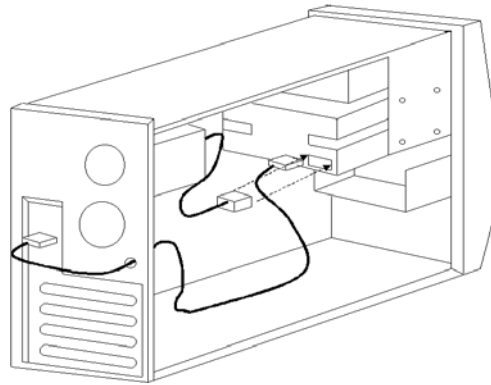


<Before installation>

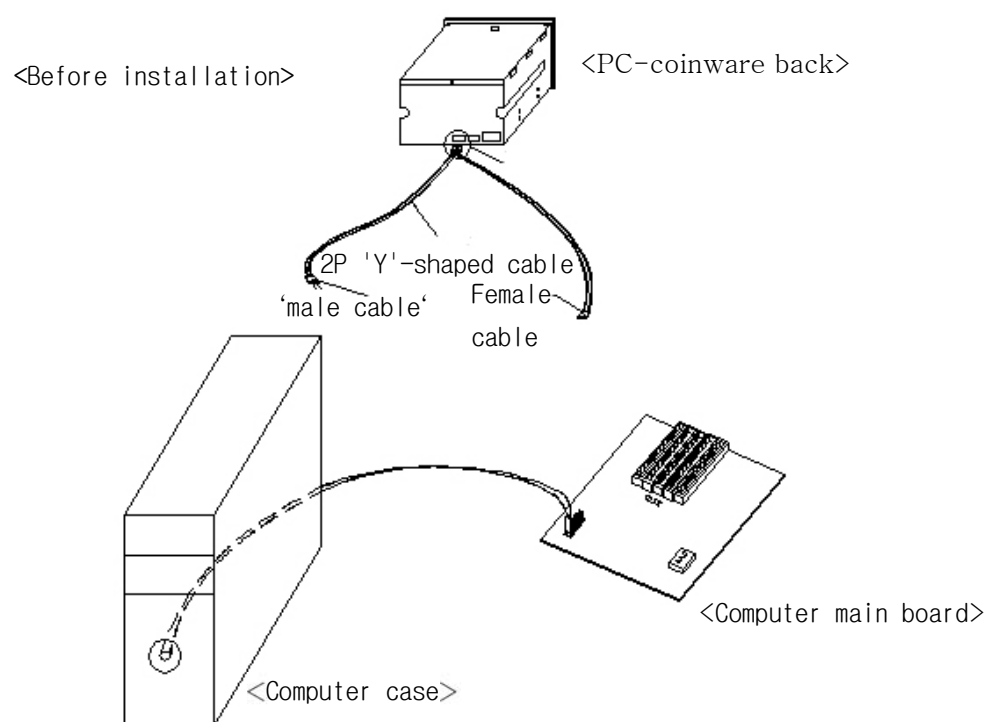


<PC-coinware back>

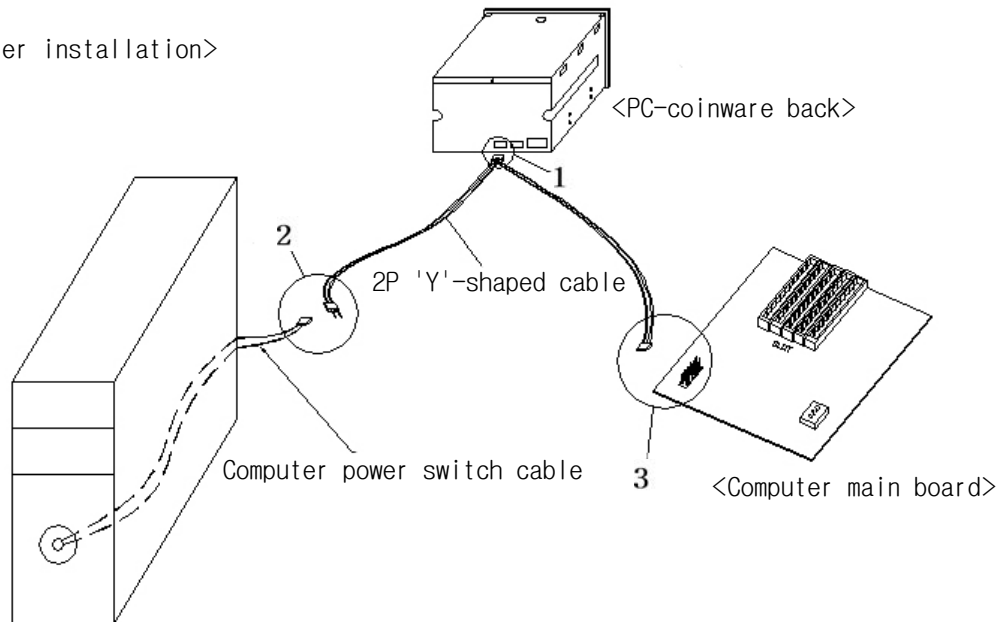
- 4) Connect the power cable to the coinware (power connector)
(Be sure to check the polarities of an electronic power)



5) Connect the 2P 'Y'-shaped cable



<After installation>



1. Connect the 2P-Cable Connect to the back port of the PC coinware.
2. Take away the computer power switch cable from the computer main board, and connect to the male 2P-Cable.
3. Connect the female 2P-Cable to the position from which the computer power switch cable was removed in computer main board.

6-2. Program Installation

◇ Program Explanation

This program is manufactured and distributed by Coinware Corporation to manage smoothly the PC room in which uses the coinware.

- Client Control and manage the PC usage

6-2-1. Client Installation

1) Installation Specification

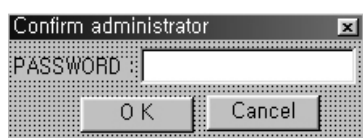
O S	Windows 98, XP
C P U	PENTIUM II 300 (minimum recommended specification)
R A M	Minimum 128MB (minimum recommended specification)
H D D(space)	Minimum 2GB
Network	Fixed IP

① Precaution before installation

In installation, a proper selection of the communication port makes clear communication with the coinware.

② Installation procedure

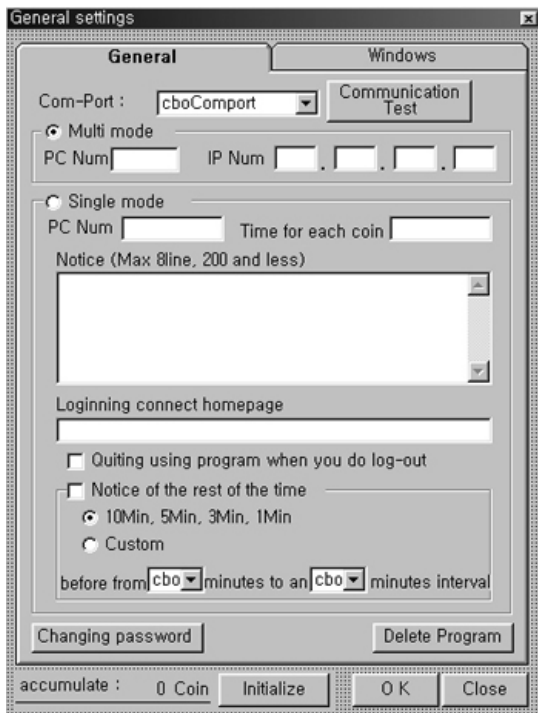
- Insert the CD, and select the Client_Setup(98).exe or Client_Setup(XP)
- Install after checking the folder installed
- After completing an installation, it will reboot automatically.



③ Write the password

- ※ The initial password is "coinware"

- ④ Select the mode to fit to the current system



※single mode – For personal or public PC used without connection with the server

- ⑤ Select the communication port
※ Basic Com 1 is pre-selected.

- ⑥ Set the computer environment
※ PC number, applicable time per coin (basic time is 30 minutes)
※ Insert the announcement

- ⑦ Set the system
※This is for controlling the window, so it is to recommend the basic setting value.

- ⑧ Change a password

- ⑨ Click [confirmation]

- ⑩ After restarting, the client is operated.

7. FND Window Error Number List

Error No.	Content
Er1	Coin tripping
Er2	Coin box open
Er3	Communication obstacle
Er4	Case open

8. Specification

item	Specification
Dimension	148 x 202 x 85 (W X H X D)
Power	DC 12 , 5V
PC System Requirements	Pentium 233MHz or Higher.

WARRANTY

9. WARRANTY

Product name	Pc-Coin Ware	Model name	Coin-200406
Purchase date	. . .	SERIAL NO.	
Agency		Price	

● **Free service**

- One-year free repair as of purchasing date in case of breaking down because of the detect during manufacturing

● **Pay service**

- Breakdown caused by natural disaster or power disorder
- Breakdown caused by user's careless treatment even within warranty period
- Over free warranty period
- Breakdown caused by improper repair or change and damage inside of the product

● **Compensation standard**

- Standard on product repair, change and refund is complied to the customer damage compensation notified by Ministry of Finance and Economy.