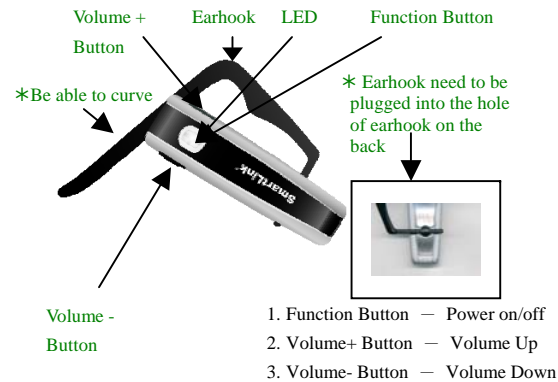


1. INTRODUCTION

Thank you for selecting this Bluetooth headset **BHT-106R**. This Bluetooth headset uses 2.4GHz Bluetooth technology for communication – without the inconvenience of wires.

This Bluetooth headset is compatible with devices that support the Bluetooth Headset and Hands-free profiles. To be able to use the headset with a mobile phone, the phone needs to have build-in Bluetooth technology, or a compatible Bluetooth phone adaptor.

2. KEY DIAGRAM



3. GETTING START

To use your headset, please follow these simple steps :

1. Charge the **BHT-106R**'s battery
2. Switch your headset **BHT-106R** on
3. Pair your headset **BHT-106R** with a Bluetooth Telephone

I. CHARGE YOUR HEADSET BATTERY

When the headset BHT-106R is on and the battery becomes low, the LED will blink green color for 3 minutes to remind you the headset needs to be recharged, at the moment , please use AC charger to charge the battery immediately .

II. SWITCH YOUR HEADSET ON/OFF

turn on : press and hold Function Button simultaneously until LED blinks red (approximate 7 seconds) ,then release .

turn off : press and hold Function Button simultaneously until LED blinks green (approximate 2 seconds),then release .

III. PAIR YOUR HEADSET WITH A BLUETOOTH TELEPHONE

Prior to using your headset for the first time, you must pair it with another Bluetooth device, such as a mobile telephone. The Bluetooth connection between the headset and your phone can be established by setting up a paired link. With a paired link , the phone remembers the headset's ID, and these 2 items are then paired together – eliminating the need to repeat the setup process with future use. Only paired devices can utilize Auto Answer and Auto-Transfer functions. The information below describes pairing instructions for a typical device. For specific instructions, refer to your mobile telephone user guide.

4. PLEASE NOTE :

1. The battery pack for your headset is already installed when you get your headset. **The battery is not fully charged** when you get the headset. Before you can use the headset, you need to charge the headset's self-contained battery for up to 3~4 hours.

To charge the headset, please follow this guide :

Connect the included AC charger to the main power supply and then to the headset charger port. While charging, the LED will indicate green color and remains on until charging is complete. When charging is complete, the green LED light will go out, you can then remove the charger from the headset.

2. Please make sure that the button has been pressed indeed when you use this headset.

5. PAIRING PROCEDURE

1. Switch off **BHT-106R** and turn on your mobile phone, Make sure the Bluetooth feature of your telephone is turned on.
2. On your **BHT-106R** (under off mode), press and hold **Function Button** simultaneously for 10 seconds until the LED blinks Red/ Green rapidly, then release the **Function Button**, headset now enters into pairing mode.
3. Your headset **BHT-106R** is now entering into pairing mode and will remain discoverable by other Bluetooth devices for 60 seconds.
4. On your mobile phone, search for devices by selecting

DISCOVER from the Bluetooth options menu. Check your mobile phone display and follow the instruction.

5. Select **BHT-106R** on the menu of your phone, enter the PIN code 0000 , when your phone menu prompts you, and the phone will start to pair the headset with the phone (the device ID is now stored in the phone's memory).
6. Your phone screen will advise that pairing has been successful, and headset indicator light will then go to stand-by mode. (LED blinks red 1 times per 3 seconds) .
Then go to connect mode (LED blinks red 3 times per 4 seconds)
7. If your mobile phone is Bluetooth 1.1 , you need to manually connect to headset by selecting CONNECT item from your phone , Bluetooth 1.2 mobile phone will automatically connect to headset .
8. Once the headset and phone have been successfully paired, you are ready to place and receive calls.

6. USING YOUR HEADSET (AFTER PAIRED)

● Answering a call

To answer a call, just press the **Function Button** to answer the call.

● Ending a call

To end a call, press the **Function Button** to terminate the call at any time .

- **Reject a call**

To reject a call, wait for the headset to ring, keep holding the “function button” for 2 seconds to reject a call.

- **Voice Transfer (hands-free function)**

Just turn the Bluetooth headset on/off when you are talking, to determine the voice be transferred to mobile phone or headset . This function is subject to your mobile phone supporting call transfer function.

- **Last number redial (hands-free function)**

If you want to dial the last number called using your headset during connect mode , press and hold “Volume-” button simultaneously for 3 seconds to redial the last number.

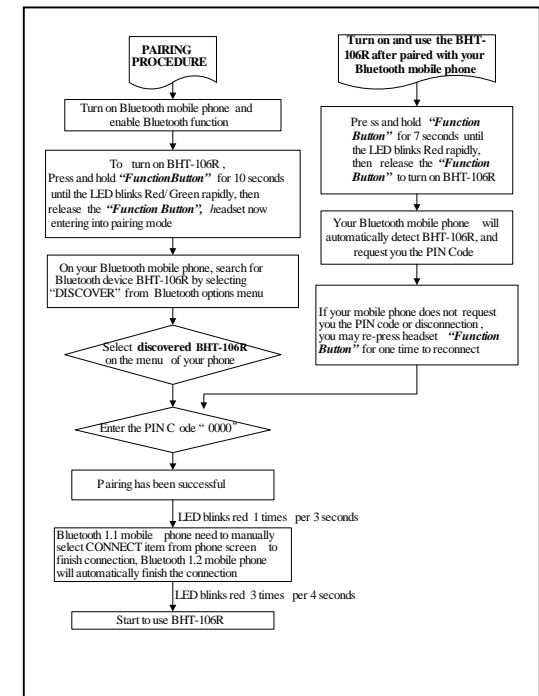
- **Voice dialing (hands-free function)**

Make sure that your mobile phone supports voice dialing function and voice tags are stored. Pressing the “function button” under connect mode, you will hear short beep tone and then speak the voice tag name, then the phone will automatically dial your selection.

- **Operating environment**

1. 90 % relative Humidity .
2. Operating temperature range -20℃ to 60℃
3. Storage temperature range -40℃ to 85℃

7. OPERATING FLOW CHART



Federal Communications Commission (FCC) Statement

15.21

You are cautioned that changes or modifications not expressly approved by the part responsible for compliance could void the user's authority to operate the equipment.

15.105(b)

This equipment has been tested and found to comply with the limits for a Class B digital device, pursuant to part 15 of the FCC rules. These limits are designed to provide reasonable protection against harmful interference in a residential installation. This equipment generates, uses and can radiate radio frequency energy and, if not installed and used in accordance with the instructions, may cause harmful interference to radio communications. However, there is no guarantee that interference will not occur in a particular installation. If this equipment does cause harmful interference to radio or television reception, which can be determined by turning the equipment off and on, the user is encouraged to try to correct the interference by one or more of the following measures:

- Reorient or relocate the receiving antenna.
- Increase the separation between the equipment and receiver.
- Connect the equipment into an outlet on a circuit different from that to which the receiver is connected.
- Consult the dealer or an experienced radio/TV technician for help.

Operation is subject to the following two conditions:

- 1) this device may not cause interference and
- 2) this device must accept any interference, including interference that may cause undesired operation of the device.

FCC RF Radiation Exposure Statement:

This equipment complies with FCC radiation exposure limits set forth for an uncontrolled environment. End users must follow the specific operating instructions for satisfying RF exposure compliance. This transmitter must not be co-located or operating in conjunction with any other antenna or transmitter.