

Directions

Meanings of icons:



Forbidding: forbid improper operations to avoid damaging the Notebook PC.



Caution: cautions for operators to avoid potential damages. Please note and remember.



Importance: important information, common notes, definitions, general knowledge and references, etc.

Other trademarks and trade name may be used in this manual to refer to either the entities claiming the marks and names or their products. The manufacture disclaims any proprietary interest in trademarks and trade names other than its own.

Information in this manual is subject to change without notice.

Reproduction in any manner whatsoever without the written permission from the manufacture is strictly forbidden.

Product images in this manual are for your reference only.

Content

Directions	1
Safety Precautions	3
Notice for the USA FCC Part 15	4
1 Knowing Your Notebook PC	6
1-1 Top Side	6
1-2 Right Side	7
1-3 Left Side	7
1-4 Bottom Side	7
2 Caring the Notebook PC	8
2-1 LCD Screen	8
2-2 Battery Pack	8
2-3 Keyboard	9
2-4 Touch Pad	9
2-5 Other accessories	9
2-6 If the water comes into the Notebook PC	9
2-7 Other Notes	10
3 Traveling with the Notebook PC	10
4 Getting Started	11
4-1 Install the Rechargeable Battery	11
4-2 Remove the Battery Pack	11
4-3 Connecting the Power Adapter	12
5 Using Your Notebook PC	13
5-1 Turning on the Notebook PC	13
5-2 Adjust the Brightness of LCD Screen	13
5-3 Keyboard Usage	13
5-4 Card Reader Usage	14
5-5 The Memory Card	14
5-6 Display Property Settings	15
6 Upgrading Your Notebook PC	18
6-1 Connect the External Monitor	18
6-1-1 How to connect the External Monitor	18
6-1-2 Connect Keyboard and Mouse	18
6-1-3 Connect Audio Device	18
6-1-4 Lock Port	19
6-2 Enter the BIOS Setup Menu	19
7 Appendix	21
7-1 Troubleshooting	21
7-2 Specifications	23

Safety Precautions

1. DO NOT press or touch the LCD Screen. DO NOT place the Notebook PC with small items, they may scratch LCD Screen or enter the Notebook PC.
2. DO NOT expose the Notebook PC to dirty or dusty environment. Keep the environment clean and dry.
3. DO NOT place the Notebook PC on uneven or unstable work surface.
4. DO NOT place or drop objects on the top of the Notebook PC. DO NOT shove any foreign objects into the Notebook PC. DO NOT cover the LCD Screen strongly.
5. DO NOT expose the Notebook PC to strong magnetic or electrical fields; DO NOT place the floppy disk near or on the Notebook PC, that may loss the data of the floppy disk.
6. DO NOT leave the Notebook PC facing the sun as it can damage the LCD Screen, especially in the car.
7. SAFE TEMP: This Notebook PC should only be used in environments with ambient temperatures between 5°C (41°F) and 35°C (95°F).
8. DO NOT expose the Notebook PC to or use near liquids, rain, or moisture.
9. Caution: risk of explosion if battery is replaced by an incorrect type. Dispose of used batteries according to the instructions.
10. DO NOT throw the Notebook PC in municipal waste. Check local regulations for disposal of electronic products. Please recycle the Battery Pack, and check with your Local Authority or retailer for recycling advice.
11. The Notebook PC and the Adapter may occur some heat during operating or charging. DO NOT leave the Notebook PC on your lap or any part of the body in order to prevent discomfort or injury from heat exposure.
12. INPUT RATING: Refer to the rating label on the Notebook PC and be sure that the Power Adapter complies with the rating. Only use attachments or accessories specified by the manufacturer.
13. Checking the connections between the main unit and attachments before turning on the Notebook PC.
14. DO NOT use the Notebook PC during eating food avoid dirtying the Notebook PC.
15. DO NOT insert anything into the Notebook PC that may result in short circuit or damage the circuit.
16. Powering off the Notebook PC, if you want install or remove some external devices, which are not support hot-plug.
17. Disconnect the Notebook PC from the electrical outlet and remove any installed batteries before cleaning. And Keep it away from children.
18. DO NOT disassemble the Notebook PC, only a certified service technician should perform repairs on your computer. Otherwise, problem may result and the manufacturer should not hold responsibility for the damage.
19. Only use Battery Packs approved by the manufacturer or else damage may occur.
20. The Notebook PC has some little metal flake to disperse heat. DO NOT place the Notebook PC on soft objects (e.g.: bed, sofa, your lap), or else the Notebook PC may become hot and halt the system operating.

Notice for the USA FCC Part 15

This equipment has been tested and found to comply with the limits for a Class B digital device, pursuant to Part 15 of the FCC Rules.

These limits are designed to provide reasonable protection against harmful interference in a residential installation.

This equipment generates, uses and can radiate radio frequency energy. However, there is no guarantee that interference will not occur in a particular installation. If this equipment does cause harmful interference to radio or reception, which can be determined by turning the equipment off and on, the user is encouraged to try to correct the interference by one or more of the following measures:

- Reorient or relocate the receiving antenna.
- Increase the separation between the equipment and receiver.
- Connect the equipment into an outlet on a circuit different from that to which the receiver is connected.
- Consult the dealer or an experienced technician for help.

This device complies with part 15 of the FCC Rules. Operation is subject to the following two conditions:

- 1) This device may not cause harmful interference, and
- 2) This device must accept any interference received, including interference that may cause undesired operation.

CAUTION: To comply with the limits of the Class B digital device, pursuant to Part 15 of the FCC Rules, this device is comply with Class B limits. All peripherals must be shielded and grounded. Operation with non-certified peripherals or non-shielded cables may results in interference to radio or reception.

MODIFICATION: Any changes or modifications not expressly approved by the grantee of this device could void the user's authority to operate the device.

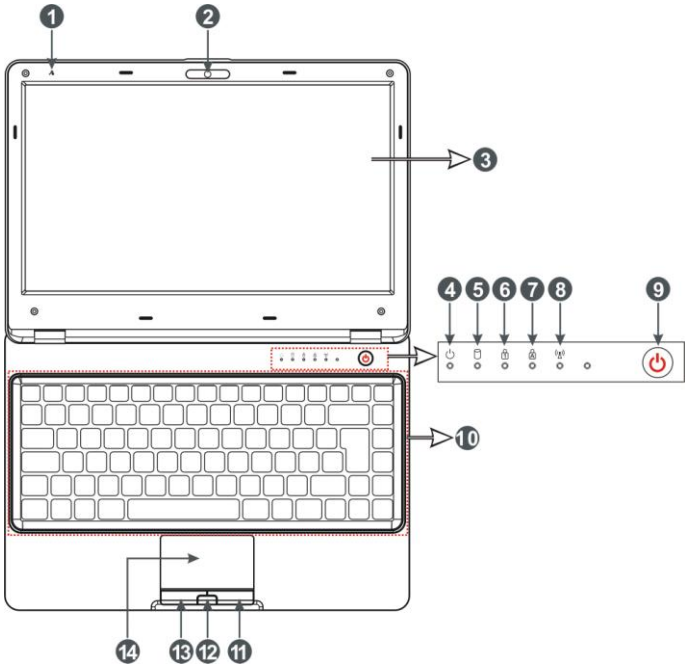


WARNING: To satisfy FCC RF exposure requirements for mobile transmitting devices, a separation distance of 20 cm or more should be maintained between the antenna of this device and persons during operation.

To ensure compliance, operations at closer than this distance is not recommended. The antenna used for this transmitter must not be co-located in conjunction with any other antenna or transmitter.

1 Knowing Your Notebook PC

1-1 Top Side

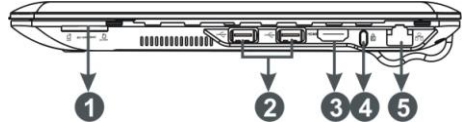


- 1. Microphone
- 2. Built-in Camera
Click Fn+F1 to turn on or off the camera function.
- 3. LCD Screen
- 4. Power Indicator
- 5. HDD Status Indicator
Light is green when the HDD is in active mode.
- 6. Numeric Keypad Indicator
Click NumLk to turn on the light and the numeric keypad is unlocked.

- 7. Cap Lock Indicator
Light is green when the cap keypad is unlocked.
- 8. WiFi Indicator
- 9. Power button
- 10. Keyboard
- 11. Right-key
- 12. One key-locking button
Click to turn on or off the touchpad.
- 13. Left-key
- 14. Touch Pad

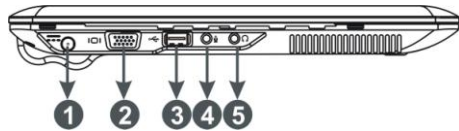
1-2 Right Side

1. SD/MMC/MS Port 3-in-1 card reader
2. USB Port (2.0)
3. HDMI Port
4. Lock Port
5. Ethernet/LAN Port




1-3 Left Side

1. Power Jack
2. VGA Port
3. USB Port (2.0)
4. Microphone Jack
5. Headphone Jack

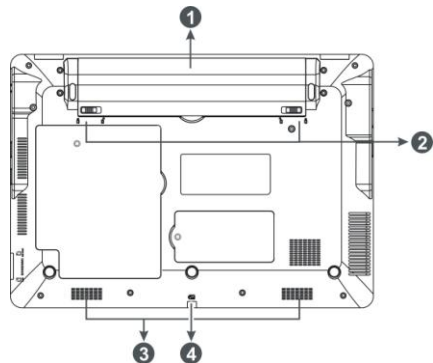


The USB card can only be inserted in one orientation. Force to insert the card may in result of damage.

1-4 Bottom Side

1. Lithium Rechargeable Battery
2. Battery Latch
3. Speakers
4.  Charge Indicator

Light is orange during being charged and is green when the battery is fully charged or discharged; light flashes when the battery is weak.



2 Caring the Notebook PC

The Notebook PC is a precision device; the error operation may damage the device.

2-1 LCD Screen

LCD Screen is the most delicate component of the Notebook PC and comprised of thin glass. It may be broken up by external abrupt force. DO NOT scratch the cover of the Notebook PC, or the scrape on the cover cannot remove.

- ✧ DO NOT cover the LCD Screen strongly, or else damage may occur.
- ✧ DO NOT place objects on the keyboard to avoid damaging the screen and keyboard when you cover the LCD Screen.
- ✧ Place the Notebook PC in carrying case to protect it from dirt, water, shock and scratches before traveling.
- ✧ DO NOT drop or place heavy objects on the LCD Screen.
- ✧ DO NOT scratch the LCD Screen with your fingernails or any hard objects.
- ✧ Use a soft and lint-free cloth to wipe your Notebook PC and wipe it gently in order to avoid damaging the LCD Screen.
- ✧ Shut down the LCD Screen, if the Notebook PC will not be used for a long time.
- ✧ DO NOT clean the LCD Screen with chemical cleaners.
- ✧ The LCD Screen DOES NOT come into contact with hard objects (E.g.: cloth button, watchband).
- ✧ Use a soft and lint-free dry cloth to wipe the LCD Screen smoothly. DO NOT use your hand to wipe the LCD Screen directly.
- ✧ DO NOT spill liquid into the Notebook PC as it can damage the components of the Notebook PC.
- ✧ Cover the LCD Screen smoothly in order to avoid moving the hinges and flashing the LCD Screen.



DO NOT clean the Touch Pad with acidic cleaner or spray cleaning solution directly on the Notebook PC.

2-2 Battery Pack

- ✧ Please recycle the Battery Pack, and check with your Local Authority or retailer for recycling advice.
- ✧ DO NOT put the Battery Pack near or into the fire, or else it may cause fire or explode.
- ✧ The Battery Pack will short circuit if the Battery Pack is punctured or reassembled
- ✧ The ideal temperature range that the Battery Pack be used is between 20°C-30°C. Any temperatures above or below this range will shorten the life of the Battery Pack.

2-3 Keyboard

Keyboard is the most often used component by finger directly. Use a little brush to clean or a can of compressed air to remove dust from between the keys on the keyboard. Moisten a soft, lint-free cloth with water or cleaner and wipe the surface of the keys smoothly.

If the water seeps into the keyboard, the circuit will not be damaged directly because of the no-power supply keyboard. But the deteriorate of the Printed circuit board will occur and will result in malfunction of the keyboard. Contact your dealer for advises at this moment.

2-4 Touch Pad

- ✧ Keep your hand clean when using the Touch Pad, or else the cursor is out of control.
- ✧ If the Touch Pad is dirty, moisten a soft, lint-free cloth with water and wipe the Touch Pad smoothly.
- ✧ The Touch Pad is pressure sensitive, DO NOT scratch the Touch Pad with hard objects, or rest heavy objects on it.

2-5 Other accessories

Following the below steps before cleaning your Notebook PC and the accessories.

1. Turn off the Notebook PC. Disconnect your Notebook PC and all external devices from their electrical outlets and remove the installed battery.
2. Use the little dust collector to pump the dust from the slot of plug or keyboard.
3. Moisten a soft, lint-free cloth with water and wipe the surface of the Notebook PC smoothly. DO NOT seep liquid into the Notebook PC in order to avoid shorting of circuit and the damage of the Notebook PC.
4. Turn on the Notebook PC after drying it.

2-6 If the water comes into the Notebook PC

- ✧ DO NOT turn on the Notebook PC immediately.
- ✧ Disconnect the outlet cable and detach the Battery Pack in order to turn off the Notebook PC, instead of pressing the POWER button to turn off it. Disconnect all external devices.
- ✧ Spill out the water from the Notebook PC. Use a soft and waterish paper or cloth to wipe the surface of the Notebook PC lightly.
- ✧ Use the fanner to dry the Notebook PC and the accessories, and then send it to the service center for advice.
- ✧ DO NOT use hair drier to dry the Notebook PC, or the high temperature may distort it.
- ✧ DO NOT place the Notebook PC into the dirty carrying case again.

2-7 Other Notes

- ✧ DO NOT expose the Notebook PC in hot environment for a long time, especially in the car. Or the parts of the Notebook PC will be metamorphic.
- ✧ Keep the data for future possible use termly.
- ✧ Renew the hardware or software termly in order to keep the Notebook PC compatible and steady.

3 Traveling with the Notebook PC

Turn off the Notebook PC and disconnect all lines before moving it. Following the below steps, if you want to travel with your Notebook PC.

Attention

1. Charge the Battery Pack and the spare Battery Pack fully.
2. Turn off the Notebook PC and disconnect from the wall outlets.
3. Shut down the LCD Screen completely and smoothly.
4. Disconnect the AC lines.
5. Disconnect all lines.
6. Place the Notebook PC in carrying case to protect it from dirt, water, shock and scratches before traveling.
7. Check that you have taken the spare Battery Pack, AC Adapter, power lines, manual and warranty card. DO NOT forget the passwords of the Notebook PC and HDD.
8. Find out the voltage type in the countries you will visit. Your Notebook PC comes with a universal AC-DC adapter, so you only need to buy the different power cords to connect the different outlets or the hotel may provide universal outlets to support your power cord as well as voltages.



If you drive your car with the Notebook PC, DO NOT leave the Notebook PC facing the sun. Place it in the shady and cool area.



DO NOT remove the HDD immediately while or after operating. Set the Notebook PC into the Standby mode or Hibernation mode, before moving it.



The connection between Internet and your Notebook PC will be interrupted when the system enter the hibernation mode.

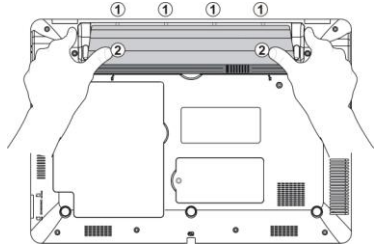
4 Getting Started

4-1 Install the Rechargeable Battery

Power the Notebook PC before using it. There are two ways to power the Notebook PC: Use the AC Adapter to power it or use the removable Battery Pack.

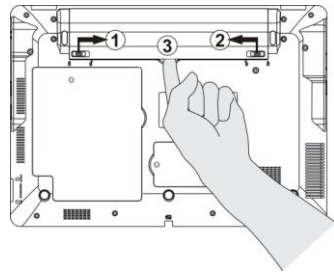
The Notebook PC is designed to work with a removable Battery Pack. Your Notebook PC may or may not have its Battery Pack installed. If your Notebook PC does not have its Battery Pack installed, using the following procedures to install the Battery Pack:

Place the Battery Pack into the card-slots of the Notebook PC toward ① and then press it toward ② to Battery Pack.



4-2 Remove the Battery Pack

1. Turn off the Notebook PC, and disconnect all lines.
2. Shut down and turn over the computer to access its base in flat and clean work surface.
3. Slide the Battery Latch toward the arrow ① and slide the Battery Latch toward the arrow ②.
4. Pull the Battery Pack out from the Notebook PC toward ③.



While you don't need to use the WIFI network, press <Fn>+<F2> to turn off and it can increase the usage time of the Battery Pack.



WARNING! For safety reasons, DO NOT disassemble the Battery Pack, DO NOT short the circuit, DO NOT throw the Battery Pack into fire and keep it away from children.



When the Notebook PC with Battery Pack (disconnect the adapter) turns on, the Power Indicator will turn on. And the light will turn off when in standby mode or system halting.



DO NOT attempt to remove the Battery Pack while the Notebook PC turns on, as this may result in the loss of working data.



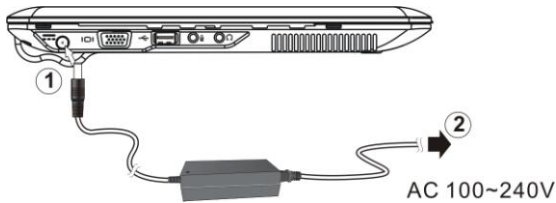
Damage may occur if you use a different adapter to power the Notebook PC or use the Notebook PC's adapter to power other electrical devices.

4-3 Connecting the Power Adapter

The Notebook PC comes with a universal AC-DC adapter and the allowable input voltage of adapter is from 100V to 240V.

Following the below steps to connect the adapter:

1. Take the adapter and the power cord, and then connect the adapter with the power cord.
2. Plug the DC end of adapter into the power jack of the Notebook PC.
3. Insert the AC end to the wall outlet
4. Check the connections above correctly before turning on the Notebook PC.



DO NOT remove the Notebook PC if the HDD is being read or written, that may result in the loss of the data and the damage of the disk. Follow the system steps to turn off the Notebook PC.

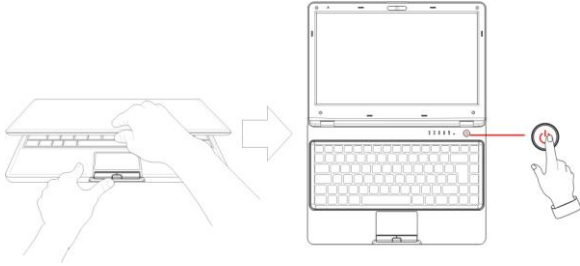


Your Notebook PC and the accessories may differ from the pictures shown.

5 Using Your Notebook PC

5-1 Turning on the Notebook PC

1. Open the LCD screen and adjust the angle of the Notebook PC's LCD Screen
2. Press the POWER button to turn on the Notebook PC.



The state after powered off the unit varies with the advance setting of the PC. You can set up the settings as following: Click "Control Panel"→"Power Options"→"Choose what the power button does";after setting, click "Save changes" to save the setting and exit.

5-2 Adjust the Brightness of LCD Screen

The Notebook PC uses an active matrix TFT LCD and provides a Display (Monitor) Output Port to connect the external monitor. The Notebook PC supports the function to adjust the LCD Screen through the following composite buttons.


Click	Function
<Fn>+<F10>	Shift between LCD Screen and external monitor
<Fn>+<F11>	Decrease the brightness of screen
<Fn>+<F12>	Increase the brightness of screen



LCD Screen is made of glass and may be damaged if the Notebook PC is dropped or shoves any hard object.

5-3 Keyboard Usage

The Notebook PC's integrated the keyboard with 87 keys.

- ✧ Click the numeric/symbol keys to input the desired keys after starting the keyboard.
- ✧ Press NumLk key to enable the keypad, the  light indicates that the keypad is active; press NumLk key again to disable the keypad.



Each key on the keyboard may have multiple functions in different software.

Function Keys

These function keys with the color word or icon sign means that their function only can be activated when clicking the function key and the <Fn> key at the same time.



- ◇ <Fn>+<F1>: Turn on or turn off the camera window.
- ◇ <Fn>+<F2>: Turn on or turn off the WiFi.
- ◇ <Fn>+<F3>: Turn on or turn off the mute.
- ◇ <Fn>+<F4>: Turn down the volume.
- ◇ <Fn>+<F5>: Turn up the volume.
- ◇ <Fn>+<F10>: Shift between LCD Screen and external monitor.
- ◇ <Fn>+<F11>: Decrease brightness of LCD Screen.
- ◇ <Fn>+<F12>: Increase brightness of LCD Screen.

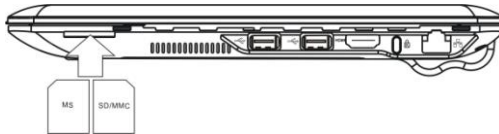
5-4 Card Reader Usage

The Notebook PC has a single built-in memory card reader that can read the following flash memory cards: Secure Digital, Multi-Media Card, Memory Stick. See the manual of the relevant card for more information.

5-5 The Memory Card

Insert The Memory Card

The card only can be inserted in one orientation (with the card's electrical contacts towards the bottom of the unit). Force to insert the card may in result of damage.



Pull out the Memory Card

Stop the card's operation, then pull the card out from the port.

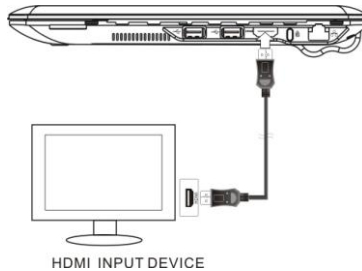
5-6 Display Property Settings

The Notebook supplies the VGA/HDMI port for connecting External Monitor or TV. (The following is the description while connecting TV display)

5-6-1 Connecting the HDMI-equipped TV

Connect one end of the HDMI cable to the HDMI port of the unit, the other end to the HDMI port of the TV, as shown below:

Before connecting, switch the digital TV screen display to be HDMI mode.



5-6-2 Graphic Properties

Right click the mouse and select “Graphic Properties” on the popup menu to enter the setting menu.

Display Devices

➤ Single Display

The option “Display Devices” would just show the current display type when no external device is connected, as shown right:



While connecting external digital television via HDMI port, you can select one display mode of “Primary Device” in “Single Display”.

➤ Dual Displays

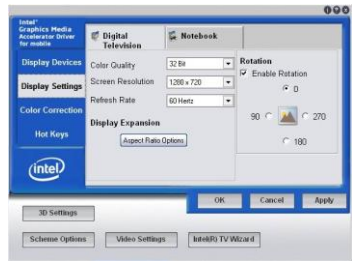
If you want to have dual screens to display, please select the item “Intel (R) Dual Display Clone” under the menu “Operating Mode” to have Primary/Secondary screen to display.



Display Settings

Select “Display Settings” to enter the menu as right:

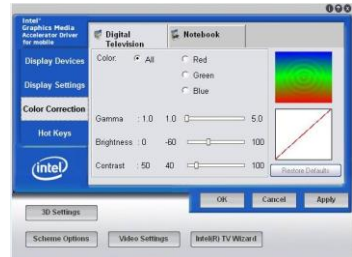
On the menu, you can set the “Color Quality”, “Screen Resolution”, “Refresh Rate” “Rotate” of the display screen.



Color Correction

Select “Color Correction” to enter the menu as right:

On the menu, you can correct the screen color through adjusting the “Color”, “Gamma”, “Brightness” and “Contrast”.



Hot Keys

Select “Hot Keys” to enter the menu as right:

On the menu, you can start the hotkey by ticking “Enable Hot Keys” that you can have a quick operation for screen later.



After finish the above settings, click “Apply”---“OK” to save the settings changed.

5-6-3 Graphic Options

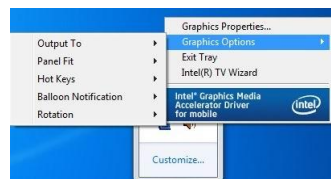
Right click the mouse and select “Graphic Properties” and select “Graphic Options” on the popup menu.

➤ Output To

Select the display type and state in the popup menu.

➤ Panel Fit



Select the display mode.



➤ **Hot Keys**

It's to enable or disable for the hotkeys.

➤ **Tray Icon**

Select to enable or disable for the tray icon. Select "Enable" and the icon  would display at the right-bottom corner of the desktop. You also can do the above operation via clicking the icon .

➤ **Rotation**

Select the desired rotate angle to view.



The operation as above may be different under the different operation system that you need to operate according to your actual machine.

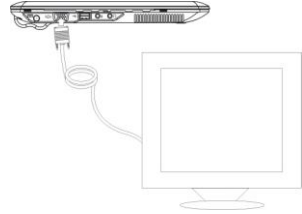
6 Upgrading Your Notebook PC

6-1 Connect the External Monitor

The Notebook PC supplies a VGA port for connecting External Monitor or projective device.

6-1-1 How to connect the External Monitor

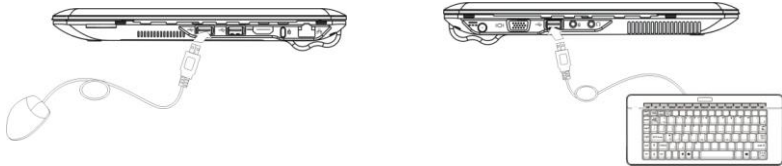
1. Turn off the Notebook PC and insert the 15-pin D-sub monitor plug to the external monitor.
2. Turn on the Notebook PC.



<Fn>+<F10>: Shift between LCD Screen and external monitor.

6-1-2 Connect Keyboard and Mouse

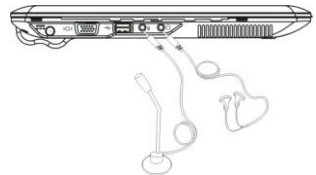
The Notebook PC's integrated the keyboard with 87 keys. If you want to use the external keyboard or mouse, connect the external keyboard and external mouse by the USB port.



When you disconnect the external keyboard or external mouse from the computer, grasp the connector, not the cable itself, and pull firmly but gently to avoid damaging the cable.

6-1-3 Connect Audio Device

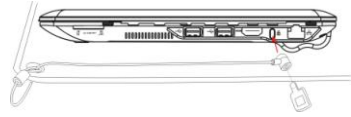
The Notebook PC can be connected headphone, sound box and microphone.



The speaker will turn off automatically after connecting the external headphone to the Notebook PC. Excessively loud volume could damage your hearing. So turn down the volume before connecting earphone, and then raise the volume to comfortable level.

6-1-4 Lock Port

The Lock Port allows the Notebook PC to be secured using and can prevent the Notebook PC to be removed from a fixed object.



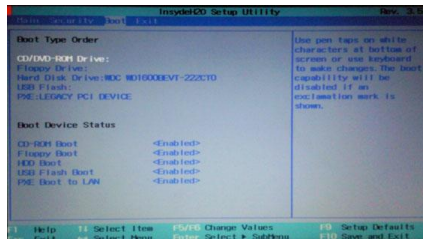
6-2 Enter the BIOS Setup Menu

Follow the below steps to enter the BIOS Setup Menu:

1. Click F2 button quickly during loading the system, then the system will enter “Setup Utility” as shown below:

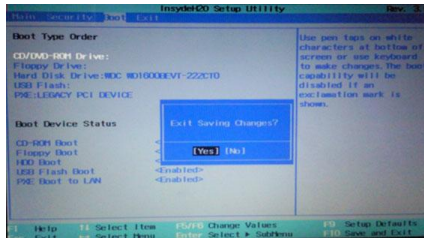


2. Click the left/ right direction keys to select “Boot” and click the Enter button to enter the below menu:

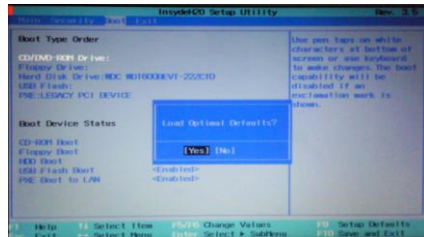


On the menu, click the up/down direction button to select the startup option and click F5/F6 button to remove the option position in “Boot Type Order” ; click the up/down direction button to select the startup option and click F5/F6 button to change values of the startup options in “Boot Device Status”.

3. Proceed to click F10 button to popup the dialogue box and select “Yes” firstly, then click the Enter button to save the setting and exit the system as shown below:



Click F9 button to setup defaults and select “Yes” to confirm.



4. There is no need to change the startup order and click F12 directly to select the temporary startup option after turning on the unit.



The BIOS version would be updated occasionally. Once there is difference from the manual, please be subjected to the actual operation.

7 Appendix

7-1 Troubleshooting

Q1: How to turn off the Notebook PC when the halted system cannot warm boot?

A: Press the POWER button and hold 4 or 6 seconds to turn off the Notebook PC.

Q2: How to check the Notebook PC if the Notebook PC cannot be turned off?

A: 1.If the power is low, connect to the electric outlets.

2.Check that the video display system is not in the external monitor mode.

3.Make sure the indicator of the adapter turns on and the adapter works well.

4. Remove the U disk, SD card and any other external device.

Q3: If the water come into the Notebook PC

A: 1. DO NOT turn on the Notebook PC.

2. Disconnect the outlet cable and detach the Battery Pack in order to turn off the Notebook PC, instead of pressing the POWER button to turn off it. Disconnect all external devices.

3. Spill out the water from the Notebook PC. Use a soft and waterish paper or cloth to wipe the surface of the Notebook PC lightly.

4. Use the fanner to dry the Notebook PC and the accessories, and then send to the service center for advice.

5. DO NOT place the Notebook PC into the dirty carrying case to again.

Q4: Why the system cannot be recover?

A: 1.Damage from External memory or built-in memory: If the data are saved to an error memory address, the data cannot restore.

2. Incompatible external device: The system may enter the standby mode and cannot resume, when the incompatible external device is connected to the Notebook PC.

3.Error from drive program or application program: The system may refuse to operate some files (file formats: .dll, .sys, .exe and so on.) and enter the standby mode or hibernate mode. If the incompatible application program will be refused by the operating system, the system may fail to recover.

Q5: How to check the system which cannot recover?

A: 1.Remove the external devices and their device program.

2.Refresh BIOS system

3.Refresh the appropriate program.

4.Remove the error application program.

5.Reinstall the operating system.

6.Send back the Notebook PC for checking.

Q6: How to prolong the life of the Battery Pack?

A: 1. Adjust the brightness of the LCD Screen to proper level.

2. Turn down the volume.

3. Make the appropriate setting in the Power Management menu.

Q7: If the image isn't clear

A: Check that the lens is clear or not, if not, clean with the soft cloth.

Q8: If the mobile moves slowly

A: The camera needs some light when gathering the data and the speed will be slow if the light condition isn't good. Please adjust the screen position of the Notebook PC or the position of the user.

The image display also shall be slower by the heavy loading for the system when the many applications are running. Please close the unused procedure.

Note:

Q7 and Q8 are the questions when you are using the camera for video capture, conferencing, and chatting.

7-2 Specifications

Main Feature	
CPU	Intel pentium SU4100
CPU Power Consumption	10W MAX
L1 Cache Size	On-die, primary 32-kB instructions cache and 32-kB, write-back data cache
L2 Cache Size	2MB on-die second level cache
Memory (#)	2GB Max
Memory Type	DDRII 800MHz
Storage	
HDD Capacities (#)	250GB
TFT Screen	
TFT Screen Size	13.3"
Screen Type	TFT
Description	1280 X800
Built-in Camera	
Resolution	1.3M Pixels
Video/Audio Feature	
Video Card Type	INTEL GS45
Video Card Capacity	Share Dynamic EMS Memory 512MB(Max)
Audio System	Built-in speaker

Sound Card Type	HD Codec
I/O Device	
Mouse	Touch Pad
Keyboard	87-key keyboard
Condition	
Operating Temperature	5-35℃
Operating Humidity	35%-85%
Storage Temperature	-20-55℃
Storage Humidity	20%-93%
Power	
Adapter	AC 100~240V; DC 19V
Output Power (maximum)	≤65W
Battery (Type)	Lithium rechargeable battery
Voltage	11.1V
Port Standard	
LAN	LAN Type: 10/100Base-T Wireless Card: 802.11 b/g/n
Audio Port	Headphone Port, Speaker, Built-in Microphone, Microphone Port
USB Port	USB-A Port(x3), USB2.0
SD Card Port	Support SD/MMC/MS Card
VGA Port	D-15 Output

HDMI Port	HDMI1.2 Output	
Physical Features		
Weight	No battery	About 1.4Kg
	With battery	About 1.8Kg
Dimension	327*230*35mm	



Design and specifications are subject to change without notice. The # symbol means that the item is optional.