

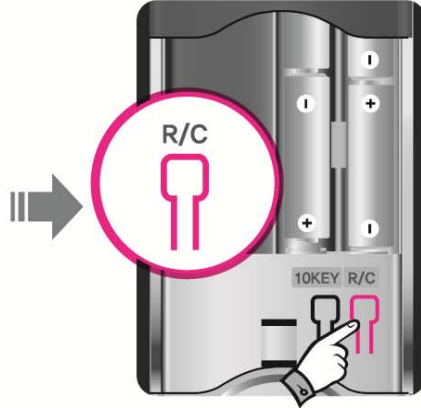
▶ How to register and delete of the digital key

1. To register Smart card

- Up to 20pcs of Digital keys can register



First, push up the battery cover.



Press the [R/C] button shortly.



If you continuously contact the digital key one by one at slow which you need to register at a contactor from outer, it would be register in order.

2. To Delete key (All Delete)



Press the [R/C] button shortly.

bik~



Press [0] → [#] to delete all registered digital keys.

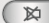
birik birik~



It can be registered up to 20pcs.



Note

- To register 20 digital keys.
- When you register the new digital key, previous registered key will be deleted automatically.
- To be finished registration less than 20 digital keys, just press the [#] button, or press  mute button.
- There is no function that deletes digital key individually.
- In case of MI-6300RD model, it will be deleted all the Digital Keys and nullify the Remote Controllers when deleting all the digital keys.

▶ To open the door from outside (Secret Code, Digital Key and Mute Function)

17

1. To open the door a secret code



Open cover



Enter the secret code
(For example: 1234)



You can open the door
when push down the cover



2. To open the door by digital key

- 1) When you contact the digital key at the touch plate on the outer body the product will be opened.
- 2) When you push down the handle from outer, you can open the door.

2. To open the door by mute function (Opening the door without beep)



Enter the secret code
(For example: 1234)

or



Press mute button first , then enter secret code or touch digital key and close cover to unlock.



Note

- Mute function would be continued for 10 seconds after press button
- When you are not opening door after unlocking with secret code or digital keys, it will be occurred lock error alarm sound

▶ Lock the Door from Outside

18




1.To lock on Automatic - Locking Mode

When you close the door on [Auto - Lock] mode, the door will be locked automatically with a sound bik bik~

※ Keep the handle horizontal when you close the door, otherwise the product will be error to the locking.



2.To lock on Manual - Locking Mode

When you Press the “Mute” button  after closing the door on [Manual - Lock] mode, the door will be locked.

※ The product will not be locked automatically on the manual mode even the door is closed.



Note

- Please make sure the door is properly closed by pulling down the outer handle by your hand.
- ※ Please keep the handle horizontal when you close the door

▶ Open the Door from Inside

19



Open the door from inside by pulling down the handle.

" Applied Panic Release "

※ Please completely pull down the handle.

What is Panic release?

One can simply open the door by pulling down the handle as one operation from inside.

※ The error sound will be activated if the door is not open after pulling down the handle

▶ Lock the door from Inside

1. To lock the door on Auto-Locking Mode

When you close the door on [Auto - Lock], the door will be locked automatically with a sound "biririk"



2. To lock the door on Manual-Locking Mode

When you push the [Manual - Lock] after closing the door, the door will be locked with beeping "biririk".



Note

- It can not close door in case deadbolt is visible. In this case please close door by pulling down inner handle to make sure the deadbolt is disappeared.
 - It will sound alarm if you press [Manual Lock] button without closing door.
- ※ Please keep the handle horizontal status always when you close the door not to occur locking error

▶ Using Double - Lock

Being double lock mode, you can not open the door normally from outside. (Normal operation of a product would be stopped.)



[Double - Lock]
(operation cut - off from outside)



[Double - Lock] released
(operation released)



Note

- You can open the door at once with secret code or digital key if you set [Double- Lock] mode without closing the door because it is not the correct [Double -Lock] set mode.
- You can open the door from inside by pulling down the handle even in the [Double-Lock] mode.
- Trespassing alarm would be still operated properly in [Double -Lock] mode.
- [Double Lock] mode will be released automatically when you pull down the inner handle.
- When you set "Mute" mode , LED lamp is just only flickering without [Double-Lock] beeping sound.

▶ Using of Remote Controller (MI-6300RD)

21

● Remote Controller for Indoor



[Remote Controller] [Remote Controller Mount Case]

- ▶ Remote controller operated by battery power.
- ▶ Peels the double sided tape where is mount case back, you can cleave it right nearby Key-Phone on the wall or Home-Controller (Wallpad).
- ▶ The magnet built-in the remote controller and it can be attached on refrigerator or etc.

● Portable Remote Controller



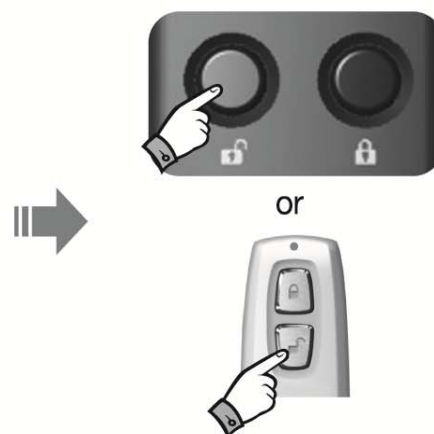
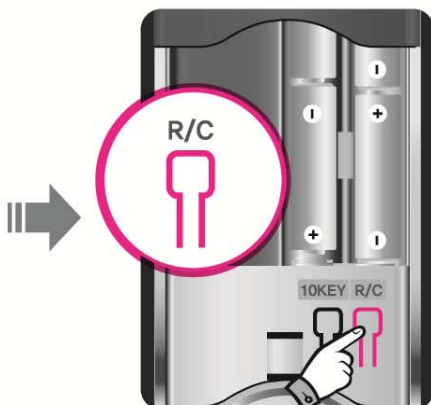
- Portable Remote Controller can be purchased by customer's option.

1. To Register Remote Controller

- Up to 5 Remote Controllers can register.



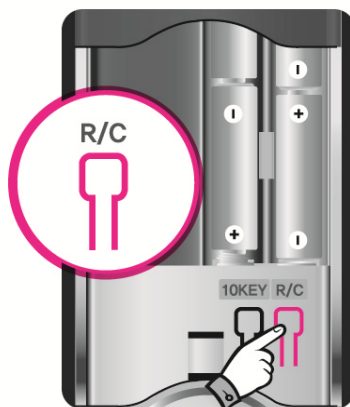
Push up battery cover to open where on the back ass'y



Press remote controller's button to register.
※ If it register several remote controllers, just press any button on the remote controller sequentially up to 20pcs being on process "3"

2. To delete Remote Controller(Delete all)

When remote controller is deleted then automatically the digital keys are deleted together.



Press (R/C) button shortly

bik~



bririk~

Press [0]→[#] then the registered remote controllers are deleted



Note

- Remote controller, also be activated by radio wave, could be influenced by other wireless device, it can be happened malfunction case.
- When you register remote controller continuously, press remote controller button to register after prior remote controller's operating lamp flashing off.
- When you register new remote controller, previously registered remote controller's details to be deleted automatically.
- Registered remote controllers press more than 1,000 times where the location is not available receiving wave zone, and using remote controller, then comes sound alarm "Bi Bi Bi~ with flickering orange lamp. In this case you should re - start registering again to use.

▶ Auto Locking Fuction

23

It is automatic locking the producty when the door closed.

If you want to lock the product by automatically, please refer to 24 pages for how to automatic / manual locking fuction to set.



▶ Auto Re - Locking Fuction

The product will be relocked if the door does not open within 7 seconds after entering ot touching secret code / digital key.



Opened door by digital key

In 1 , 2 ~ 7sec.



Re-locking automatically



Note

- It can not release the function on Auto Re-Locking and it is not related with setting on the function " Auto/Manual Lock".