

3. To open by secret code



Open cover



Enter secret code
(For example: 1234)



Close cover then
unlock door

4. To open by smart card



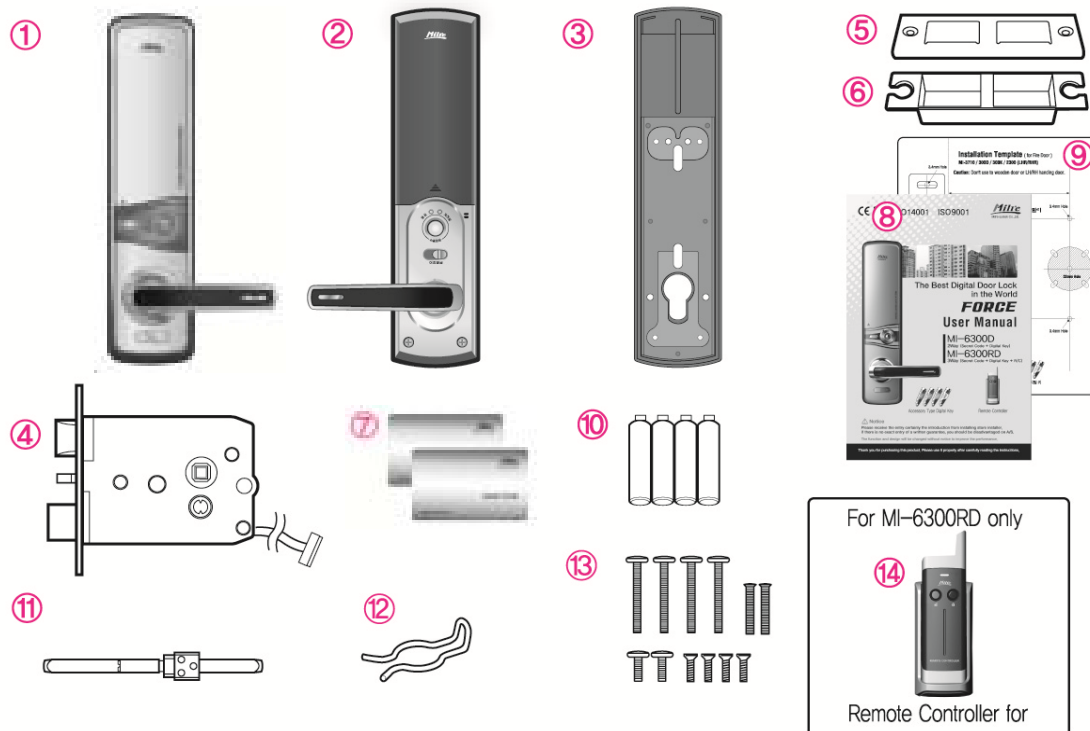
It can be opened by contact the
registered smart card at the touch

5. To open by mute function (opening without sound)



Press mute button before
enter the secret code or
contact the smart card.

09



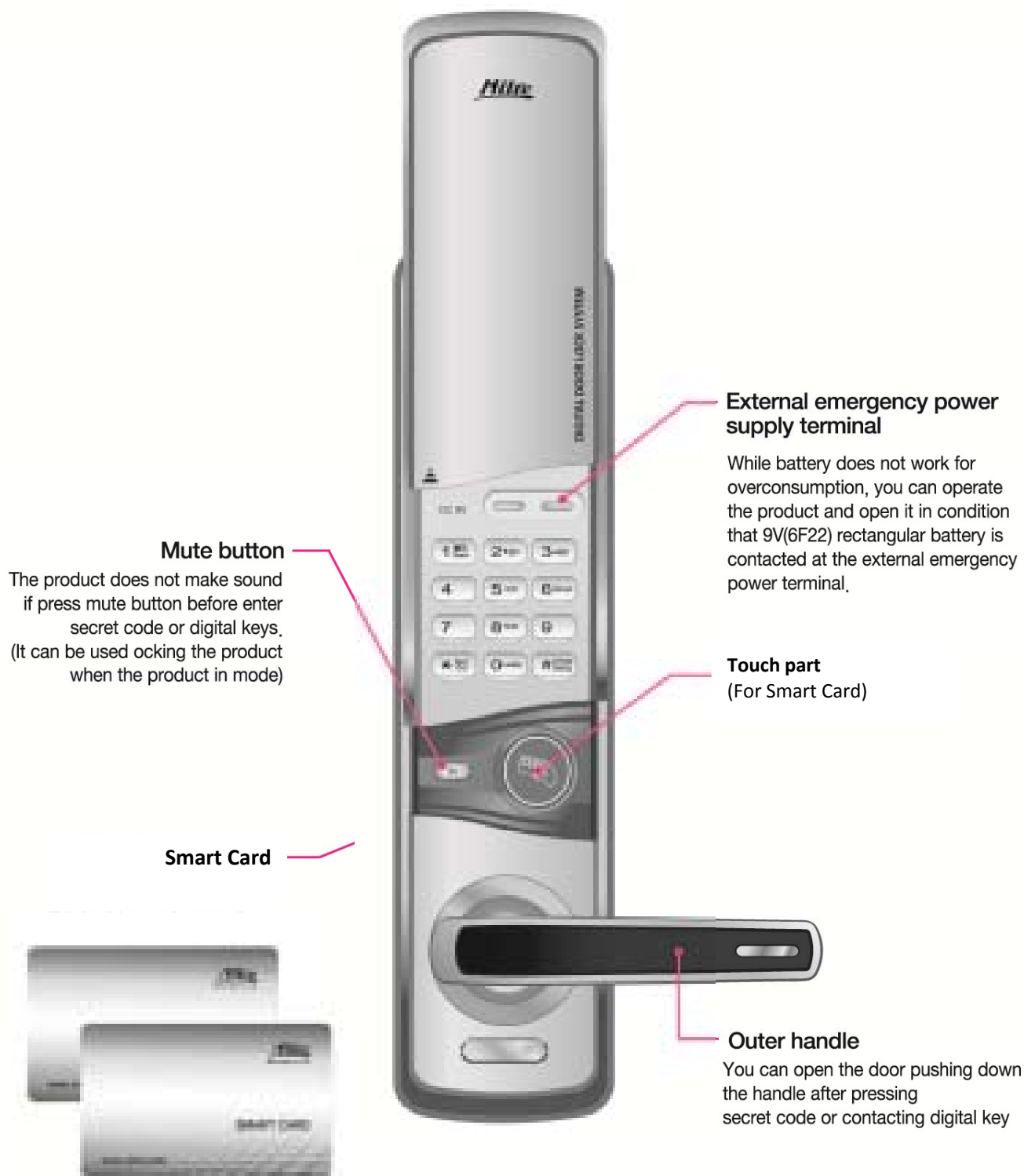
Description	Specification	Remark
1. Outer body(Front body)	76(W) x 316(H) x 28(D)	Including outer rubber pad
2. Inner body(back body)	70(W) x 310(H) x 29,5(D)	Including bracket for fixing
3. Back cover	76(W) x 316(H) x 8,4(D)	
4. Mortise lock	123(W) x 109(H) x 24,5(D)	
5. Striker	36(W) x 106(H) x 1,5(D)	
6. Striker housing	24(W) x 102 (H) x 18(D)	
7. Smart card	4pcs	
8. User manual	Main user manual	Product Guarantee Included
9. Installation template	Use for making hole at the door	
10. Battery	6V ("AA" Size LR6 4pcs)	
11. Handle shaft	89(W) x 12(H) x 12(D)	
12. Handle shaft stopper	Stopper for handle shaft	
13. Screw	5 x 30mm 4pcs -back cover to fix inner upper part 5x 25mm 2pcs -To fix inner lower part 5x8mm 2pcs -To fix inner upper part 3/16in x 1/2ir 4pcs - To fix mortice & striker	TH M5 x 30 OH M5 x 25 TH M5 x 8 FH MS 3/16 x 1/2
14. Remote controller	(3V "AAA" Size LR6 Alcarine 2pcs included)	For MI-6300RD Only
15. Others	Product warranty card	Picture not

▶ Name and function of each part Front Ass'y

Before Using

10

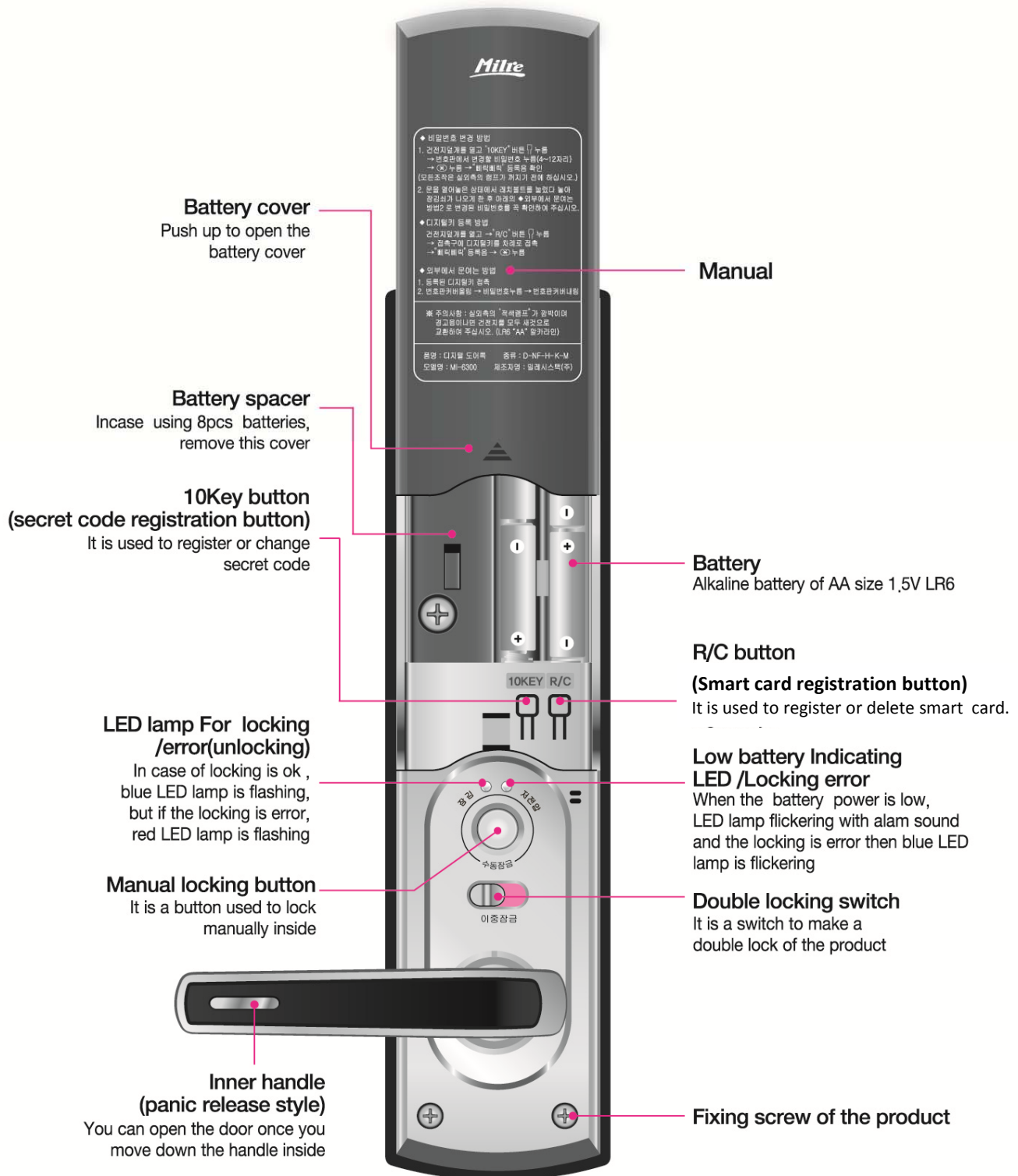
[Front]



▶ Name and function of each part

11

[Back Ass'y]

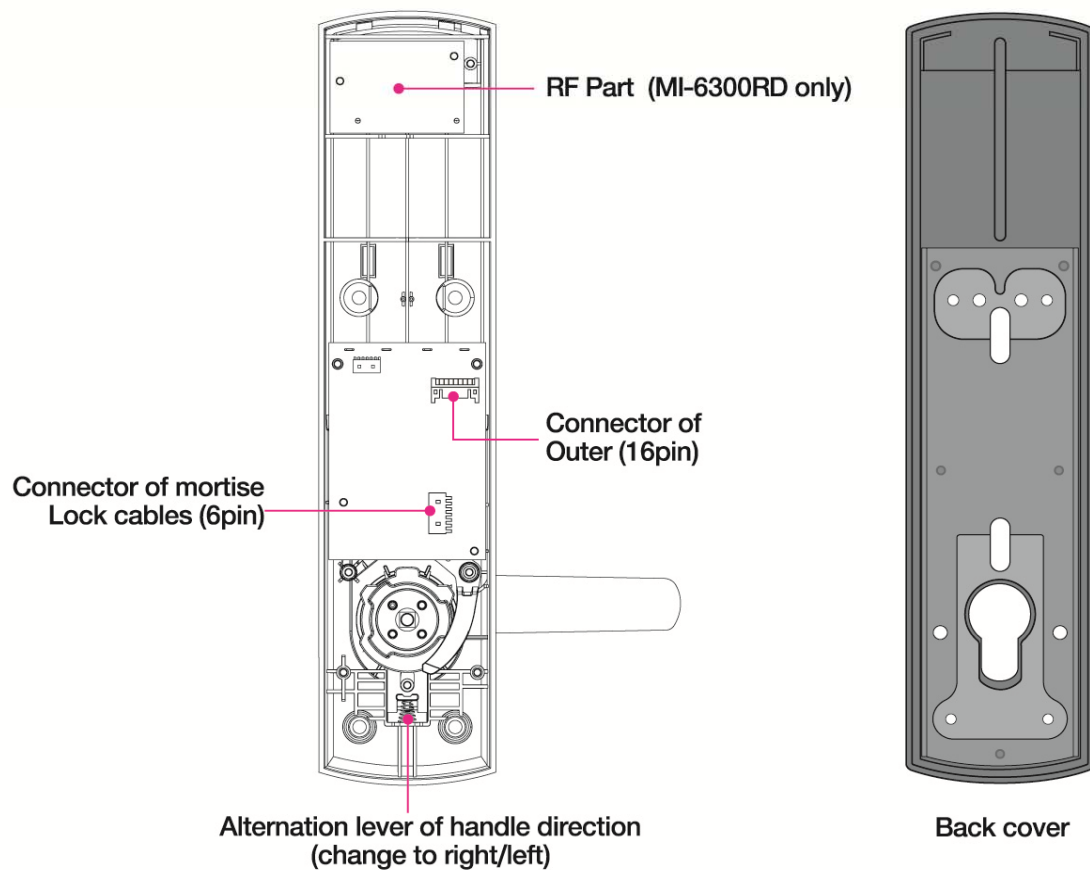


➤ Name and function of each part

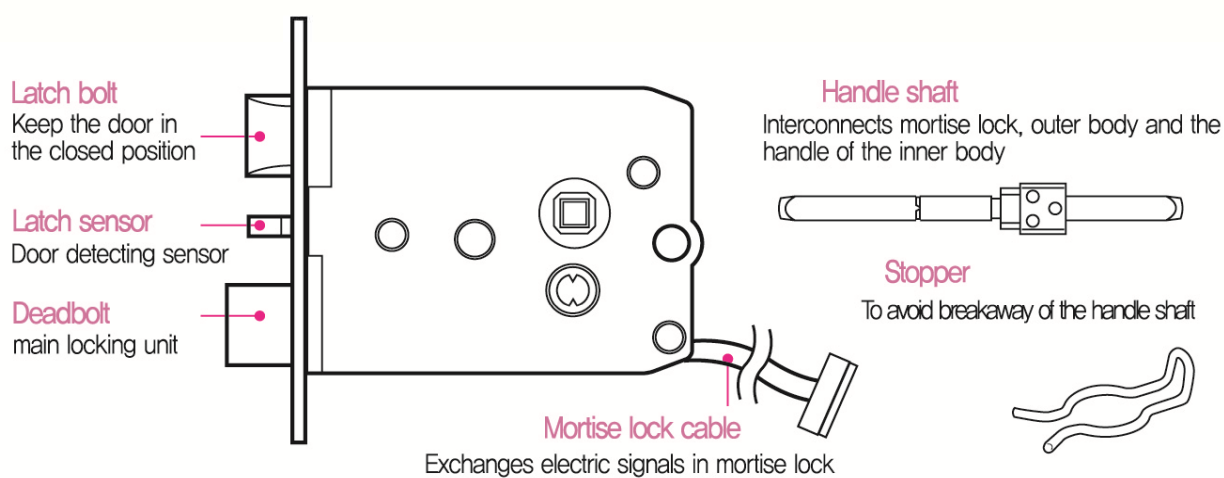
Before Using

12

[Back side of inner main body]



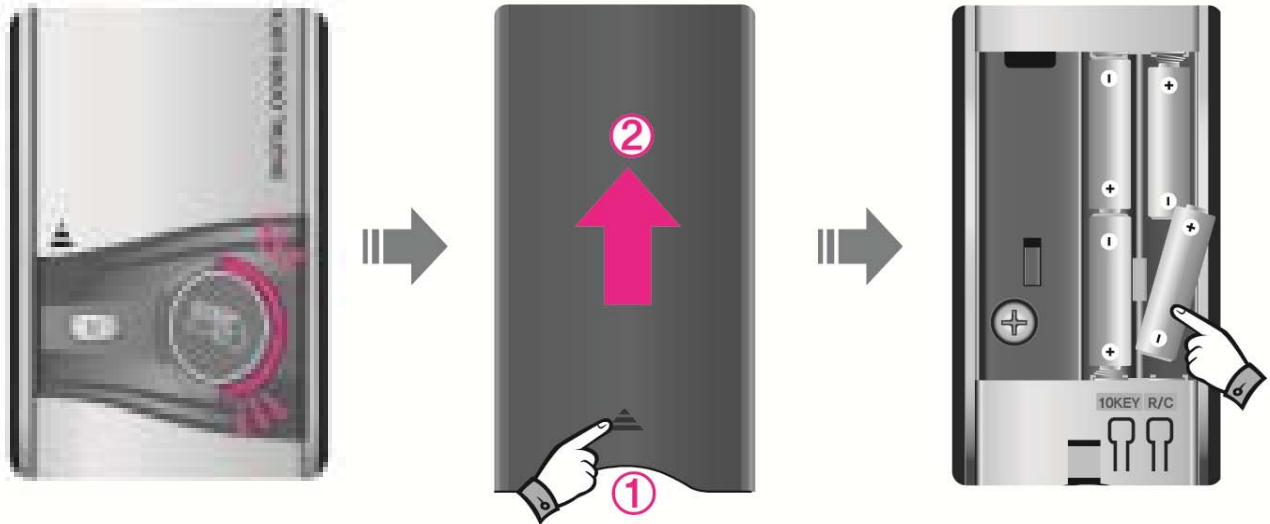
[Mortise Lock]



▶ Changing the battery

13

When the lamp on the upper part of outer body begins flashing in the red color and an alarm sound, the batteries should be replaced immediately



1. If warning alarm for notice to change battery
2. Separate battery cover pushing to arrow direction
(2) pressing arrow mark (1) with a finger
3. please change all 4 batteries to new ones with same direction of the picture. Alkaline battery AA size 1.5V LR6



Note

- Life of a battery is available for a year based on 20 times of uses a day.
- Validity can very depending on battery manufacturer, production date, using environment and frequency.
- All 4 batteries (or 8 batteries) should be changed simultaneously when changing.
- Warning alarm for notice to change battery does not sound while configuring the operation sound to mute mode.
(Only red lamp keeps blinking)

▶ How to use external emergency power

Before Using

14

While the battery changing period has expired and the product does not work anymore with the internal battery, you can make contact with a 9V rectangular battery (6LF22) at the external emergency power supply terminal and open it by entering secret code or touching digital key.

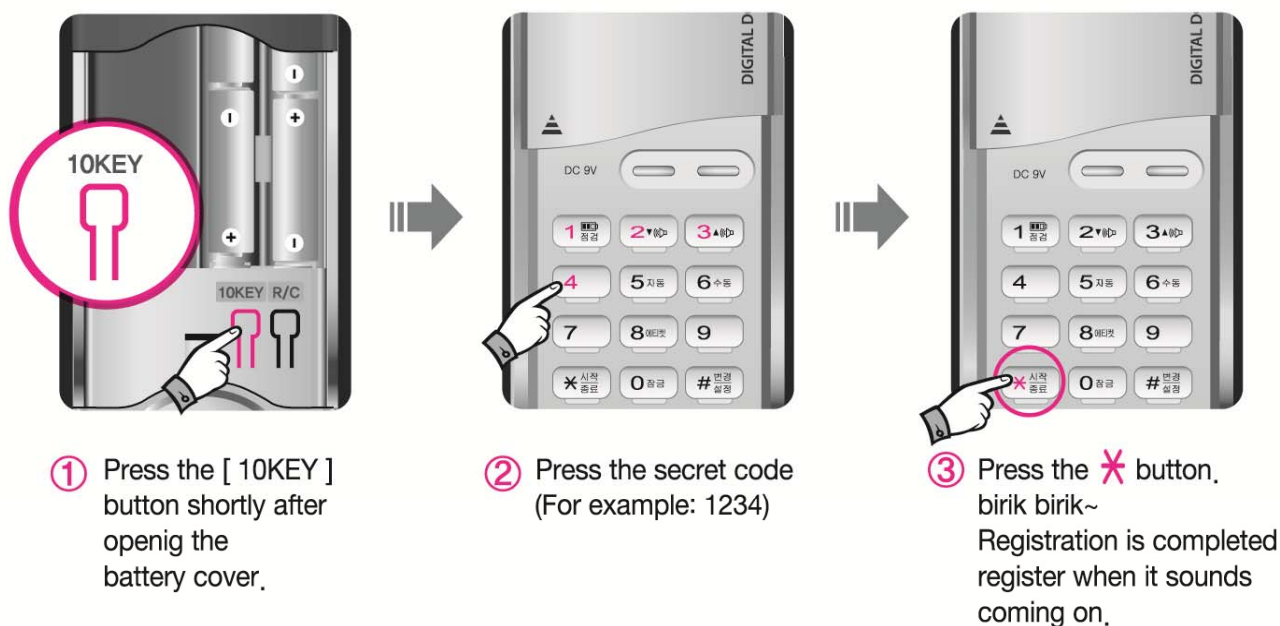


Note

- Please use alkaline battery of AA size LR6.
- All four batteries should be changed simultaneously when changing. If you use batteries mixed with different types, and new batteries may shorten the battery lifespan or cause malfunction.
- In particular, the rechargeable battery may cause malfunction (problems with unlocking).
- Batteries may generate liquid leakage and it may damage the product and so, check batteries periodically (every six months or so). If battery leakage has happened, change all the batteries to new ones.
- Clean leaked liquid in the product with tissue and dry cloth and if it was touched with hands, clean it up with soapy water since it can be harmful to human body.
- External emergency power supply terminal, polarity does not matter.
- Please use emergency power just when inner batteries are completely exhausted.

▶ How to change and register the secret code

- Up to 8 different secret codes can register



- To register several secret codes continuously, enter 1st secret code → Press " * " button (① ~ ③) → enter 2nd secret code → press " * " again (② ~ ③), follow this process up to 8 times, after finished registering last code , press " * " button to end



Note

- The secret code has been registered ①②③④ from the factory
- The secret code can be registered from 4 to 12 digits
- If you no need registering up to 8 secret codes , press * button or close cover
- Existing numbers are erased automatically after finish registration of new secret code
- There is no function that delete all registered secret codes
- You can not open the door and have to break a product when you forget the secret code or lost digital key