

## Mini-Rechargeable Wireless Laser mouse User's Manual

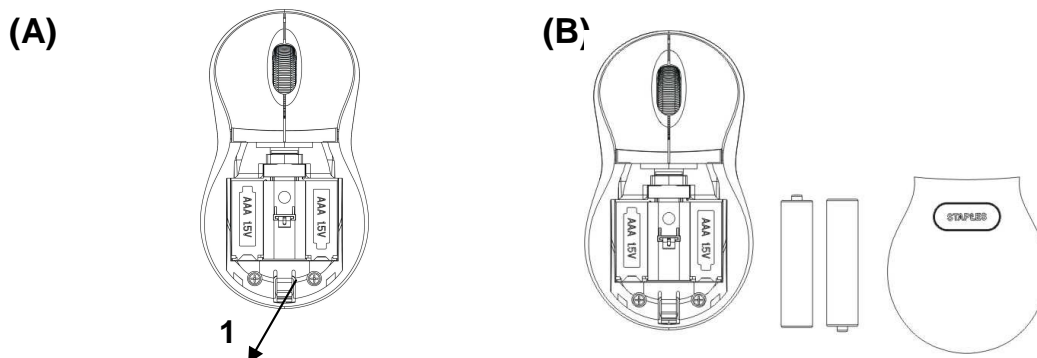
The wireless Laser Mouse operates with 27MHZ digital radio technology. You can use the mouse on any computer that has a free USB port which meets the system requirements specified below.

### ● System requirements :

1. Win98 /WinMe/WinXP/Win2000 /Window VISTA  
(Driver required for Win95 and WinNT)
2. Mac OS X v10.2 or higher
3. At least one free USB port
4. CD-ROM drive for installing the mouse software.

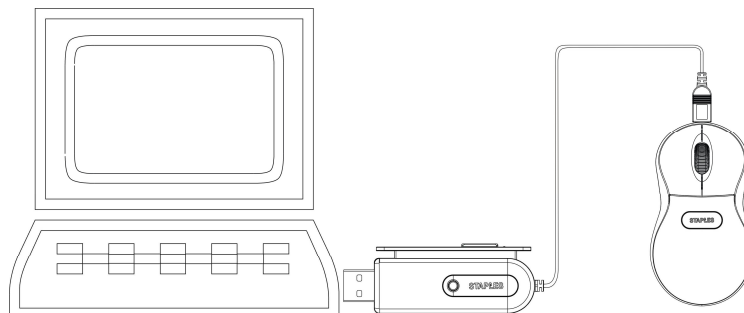
### ● Battery Installation :

1. When inserting the batteries, observe the safety notes and the information in chapter. Only use **2\*AAA Ni-MH batteries** of the same type. Before using the batteries for the first time, they should be charged for around 20 hours .
2. Press the button **1** on the back of the mouse to open the battery cap. (refer to picture A)
3. Insert 2 \*AAA Ni-MH batteries in the battery compartment. Check the polarity and install the batteries properly. (refer to picture B)
4. Replace the battery cap and close it.



### ● Battery charging in the mouse :

1. The Laser Mouse can be chargeable directly by mini USB cable of the receiver.
2. When the STAPLES logo on the Mouse is flash that means battery low power.
3. Please connect the mini USB cable of the USB receiver to the mini USB port in the front side of the Mouse. (refer to below picture) When charging the battery, the STAPLES logo would flash on the mouse. When STAPLES logo lights on, it means the batteries are fully power.

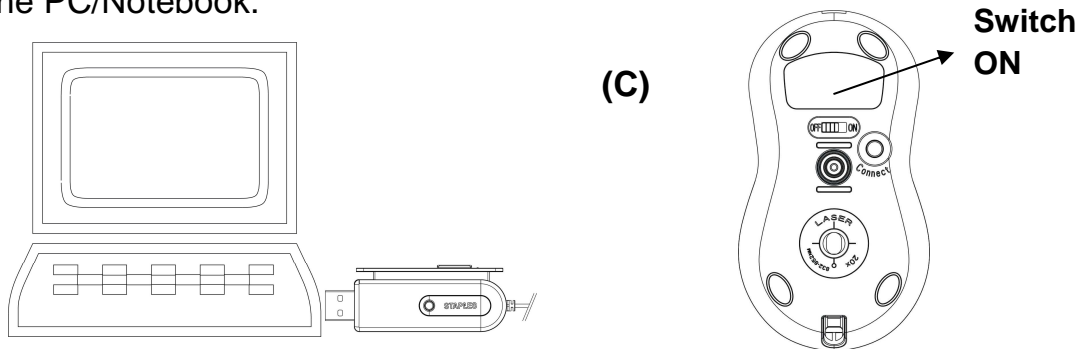


**Caution: Use only Ni-MH type batteries for the mouse.**

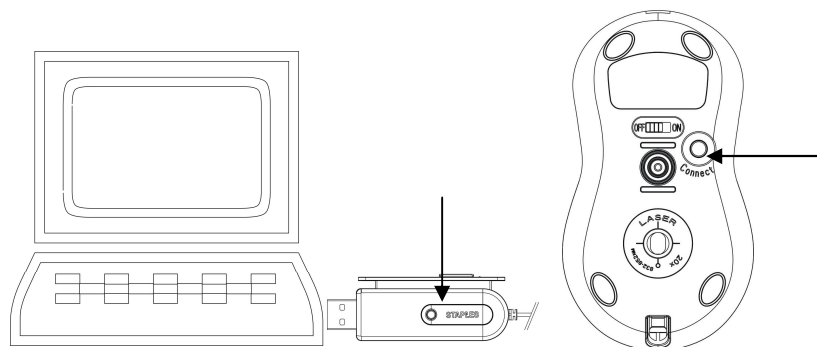
If you do not want to use your mouse for a longer time, please remove the batteries and store them in a dry place at room temperature.

Before the receiver can work with your new mouse, you must make the following preparations.

1. Turn on the PC/Notebook.
2. Connect the receiver either directly or with the USB extension cable to the USB port on the PC/Notebook.



3. Switch on the power of the wireless laser mouse located on the backside of the mouse. (refer to picture C)
4. Press the connect button on the Receiver firstly, the indicator LED will light red.
5. Then press the connect button on the backside of the mouse within 3 seconds.
6. The indicator LED on the receiver will OFF light.
7. It means the wireless connection between the mouse and receiver is established. Now you can use the Wireless Laser Mouse.

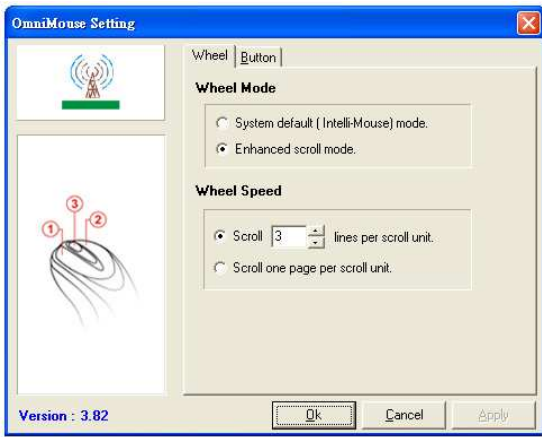


8. If you are not intending to use the mouse for along time, you can switch off the unit to save battery power. Set the switch on the backside of the mouse to " OFF".
9. If you wish to resume work with the mouse, do not forget to switch on again.

#### ● **Installing software for the Wireless Laser mouse :**

1. Turn on your computer and start Windows;
2. Insert the software CD in the CD-Rom drive of your computer. The CD will start automatically. (If the software CD does not start automatically, please run the Setup.exe file.)
3. Follow the instructions on the screen step by step.
4. The installed software allows you to call up the following configuration menu either via the installed program group or via the mouse icon created in the task bar.
5. After install the Driver the wheel of Wireless Laser Mouse can be setting to F1----F10 ; Esc ; Back-Space ...functions. You can find all of the function for you choice when you point the

Mouse's icon on your computer screen.



- **To avoid environmental interference, which will shorten the effective operation distance, please note the following :**

1. Do not put the mouse and receiver on a metal cabinet or desk. Metal creates RF interference, which may impair the RF communication and shorten the communication distance.
2. Keep operation distance around 1.5m.

- **Troubleshooting :**

The cursor doesn't react when I move the mouse.

1. This is probably because the distance between the receiver and mouse exceeds the working range. Simply adjust so that the mouse is closer to the receiver.
2. Your ID setup may not have worked properly. Please repeat the establishing the wireless connection process.
3. Make sure you have installed the batteries correctly, Ref: Battery Installation.
4. Make sure the batteries have enough power, Ref: Battery charging in the mouse.
5. Make sure the receiver is correctly connected, Ref: Hardware Installation.

- **Safety information :**

Please observe the safety information supplied.

1. Use only 2\*AAA Ni-MH batteries for the mouse.
2. Check the right polarity when inserting the batteries.
3. Always replace both batteries.
4. If you use non-rechargeable batteries and/or other types of battery to charging, there is a risk of leakage and explosion.

**Caution:**

1. **Never direct the invisible laser beam towards your eyes.**
2. **Use only the Ni-MH batteries for the Mouse work with the USB receiver chargeable.**
3. **Please take away the batteries from fire if not it is a risk of leakage and explosion.**

### **Federal Communication Commission Interference Statement**

This equipment has been tested and found to comply with the limits for a Class B digital device, pursuant to Part 15 of the FCC Rules. These limits are designed to provide reasonable

protection against harmful interference in a residential installation. This equipment generates, uses and can radiate radio frequency energy and, if not installed and used in accordance with the instructions, may cause harmful interference to radio communications. However, there is no guarantee that interference will not occur in a particular installation. If this equipment does cause harmful interference to radio or television reception, which can be determined by turning the equipment off and on, the user is encouraged to try to correct the interference by one of the following measures:

- Reorient or relocate the receiving antenna.
- Increase the separation between the equipment and receiver.
- Connect the equipment into an outlet on a circuit different from that to which the receiver is connected.
- Consult the dealer or an experienced radio/TV technician for help.

FCC Caution: Any changes or modifications not expressly approved by the party responsible for compliance could void the user's authority to operate this equipment.

This device complies with Part 15 of the FCC Rules. Operation is subject to the following two conditions: (1) This device may not cause harmful interference, and (2) this device must accept any interference received, including interference that may cause undesired operation.

#### **INFORMATION TO USER:**

The users manual or instruction manual for an intentional or unintentional radiator shall caution the user that changes or modifications not expressly approved by the party responsible for compliance could void the user's authority to operate the equipment.