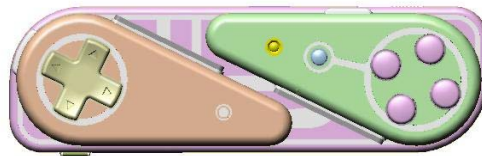


BGP100- *Bluetooth GamePad (Beta)*

User Manual For Symbian Series 60 Mobile Devices



Patent Pending

Supports

Symbian Series 60 Smartphone	
Nokia	3650
	6260
	6600
	6670
	7610
	7650
	N-Gage
	N-GageQD
	6630
Sendo	X
Siemens	SX1

Manufacturer's Disclaimer Statement

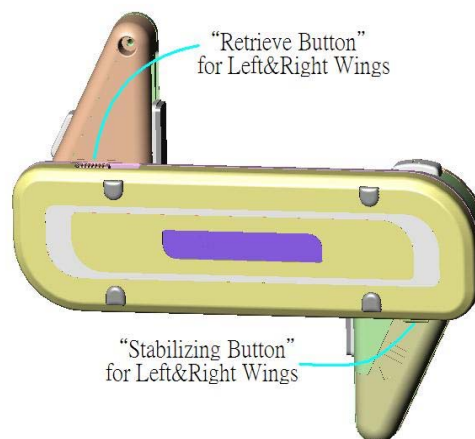
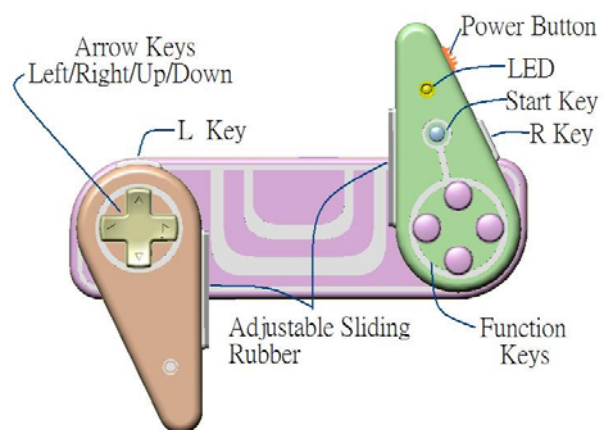
The information in this document is subject to change without notice and does not represent a commitment on the part of the vendor. No warranty or representation, either expressed or implied, is made with respect to the quality, accuracy or fitness for any particular purpose of this document. The manufacturer reserves the right to make changes to the content of this document and/or the products associated with it at any time without obligation to notify any person or organization of such changes. In no event will the manufacturer be liable for direct, indirect, special, incidental or consequential damages arising out of the use or inability to use this product or documentation, even if advised of the possibility of such damages. This document contains materials protected by copyright. All rights are reserved. No part of this manual may be reproduced or transmitted in any form, by any means or for any purpose without expressed written consent of its authors. Product names appearing in this document are mentioned for identification purchases only. All trademarks, product names or brand names appearing in this document are registered property of their respective owner.

Table of Contents

Manufacturer's Disclaimer Statement	2
Introducing BGP100- Your Bluetooth GamePad.....	4
➤ BGP100 "Bluetooth GamePad" Features	4
➤ Setting Up BGP100	5
BGP100 Bluetooth GamePad Driver Installation	6
➤ Before Use	6
➤ System Requirements	6
➤ Installing/Uninstalling/Upgrading your Bluetooth GamePad Driver.....	7
➤ Installation.....	7
➤ Installing the Application in Series 60 Smartphones by Auto Run CD-ROM.....	7
➤ Installing the Application in Series 60 Smartphones by "Application Installer" of PC Suite.....	8
➤ Installing the Application in Series 60 Smartphones using Infrared OR Bluetooth File Transfer.....	9
➤ Uninstalling Bluetooth GamePad Driver.....	10
➤ Upgrading Bluetooth GamePad Driver.....	10
Configuring BGP100 Bluetooth Gamepad	11
The Illustration of " Config " Page	12
➤ Active gamepad	12-13
➤ Reconnection	13
➤ Power Saving Mode	13
➤ The "About" Page.....	14
➤ Defining "Up/Down" Arrow Keys, "Left/Right" Arrows, "Left/Right" Soft Keys, and "Start" Key.....	14-18
➤ Defining "A", "B", "C", and "D" Buttons	19-20
Appendices	21
➤ Appendix 1: LED.....	21
➤ Appendix 2: Product & Technical Specifications	22
➤ Appendix 3: Troubleshooting.....	23

Introducing BGP100- your Bluetooth GamePad

- GamePad Features



- Setting Up BGP100



Step 1:

Turn on the power switch located on the top boarder of the right wing. Check the status of LED (Flashing red & blue indicates “power on”)



Step 2:

The left and right wings move approximately 64 degrees upward and downward respectively. Both wings can be adjusted to fit the size of your Smartphone device.



Step 3:

Place your Smartphone at the center of your GamePad. The 2 adjustable sliding rubber strips on the inner edges of both wings will help secure your device.

BGP100 Bluetooth GamePad Driver Installation

- Before Use
 - ✧ Check the battery status of your Bluetooth GamePad- when power is on, blue and red will flash at the same time.
 - ✧ Disable or remove other previously installed applications which require the use of Bluetooth on your Smartphone (Note: may vary with different Smartphone device)
- System Requirements
 - ✧ Symbian Series 60 Smartphones
 - ✧ Minimum of 100KB free memory built-in memory
 - ✧ PCs with Microsoft Windows 2000/XP operating system
 - ✧ PC suite (available on one of the CDs delivered with your phone)

- Installing/Uninstalling/Upgrading your Bluetooth GamePad Driver

Installation

The driver can be installed by AutoRun CD-ROM, PC Suite, Cable or Wireless file transfer (Infrared/Bluetooth) for Symbian Series 60 OS. (Please note: when the file is transferred to your Smartphone, a message with file "GamePad" will be shown on the screen. Click "View". A warning message will appear: "Application is untrusted and may have problems. Install only if you trust provider". Click "Yes", then click "Install")

➤ **Installing the Application in Series 60 OS Smartphones by AutoRun CD-ROM**

1. Ensure that a connection between your PC and Smartphone is established.
2. Insert BGP100 Bluetooth GamePad CD into the CD-ROM drive of your PC.
3. Follow the instruction on screen to complete the installation.
4. When the installation is complete, a Bluetooth GamePad icon can be found under the Menu section of your Smartphone device.

➤ **Installing the Application in Series 60 Smartphone by “Application Installer” of PC Suite**

1. Select PC Suite on your PC screen, then click “Install applications” icon. (Figure 1)

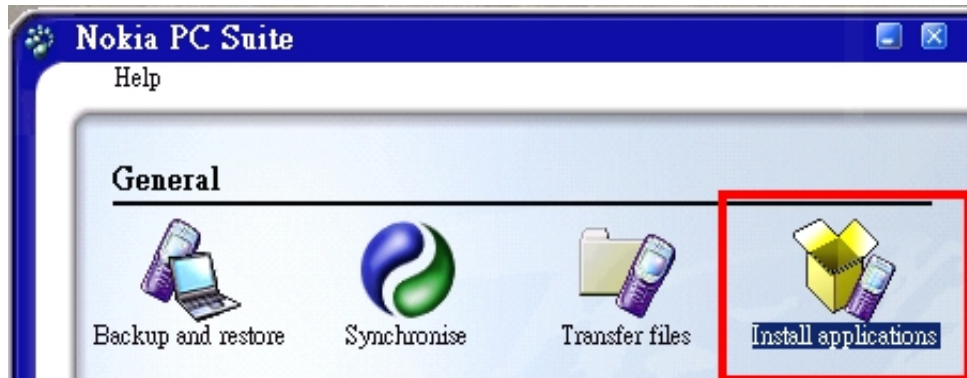


Figure 1

2. In the application installer, see “My Computer”- Path: CD-Rom driver >> Files >> Symbian >> Series 60 >> Language. (Figure 2)

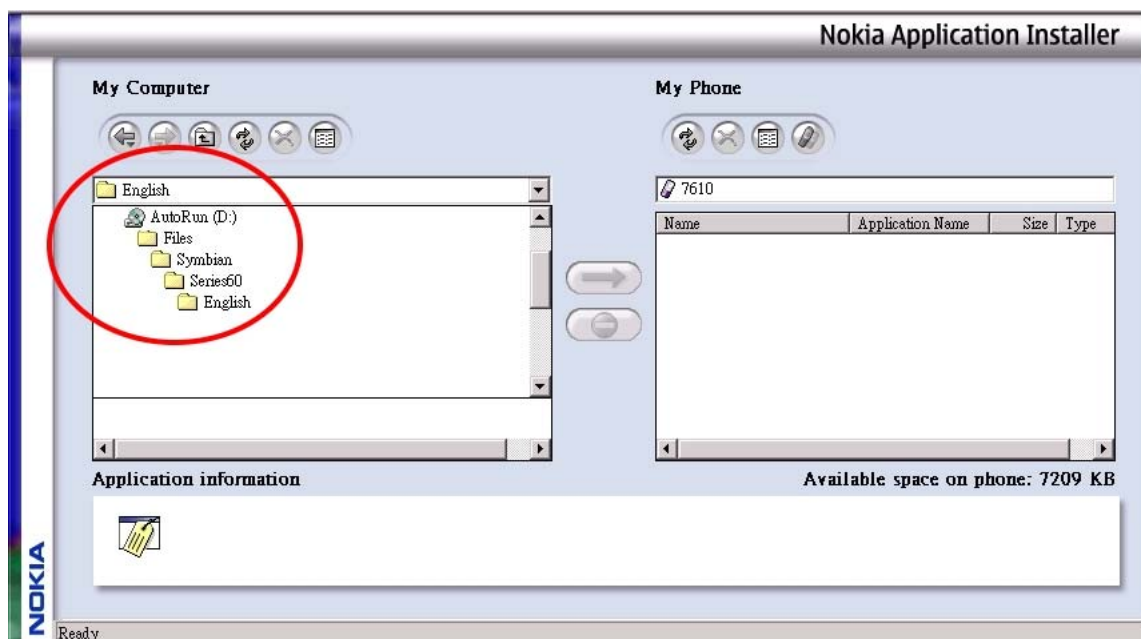


Figure 2

3. Select file “GamePad.sis” to complete installation.

➤ **Installing the Application in Symbian Series 60 Smartphone using Infrared OR Bluetooth File Transfer**

1. Disable any application or driver which will require the use of Infrared or Bluetooth in your Smartphone.
 2. Path: CD-Rom driver >> Files >> Symbian >> Series 60 >> Language. Select the file "GamePad.sis" on your PC.
 3. Follow the instructions for the Infrared or Bluetooth software on your PC to locate the Series 60 OS Smartphone, and then transfer the file to your Smartphone device.
- * When the driver is installed successfully, the GamePad driver icon will show up in the Main Menu. (Figure 3)



Figure 3

➤ **Uninstalling BGP100 Bluetooth GamePad Driver**

Step 1: Make sure the BGP100 Bluetooth GamePad is disconnected with your Smartphone device.

Step 2: Select Tools→ Manager→ GamePad → Remove. (Figure 4).

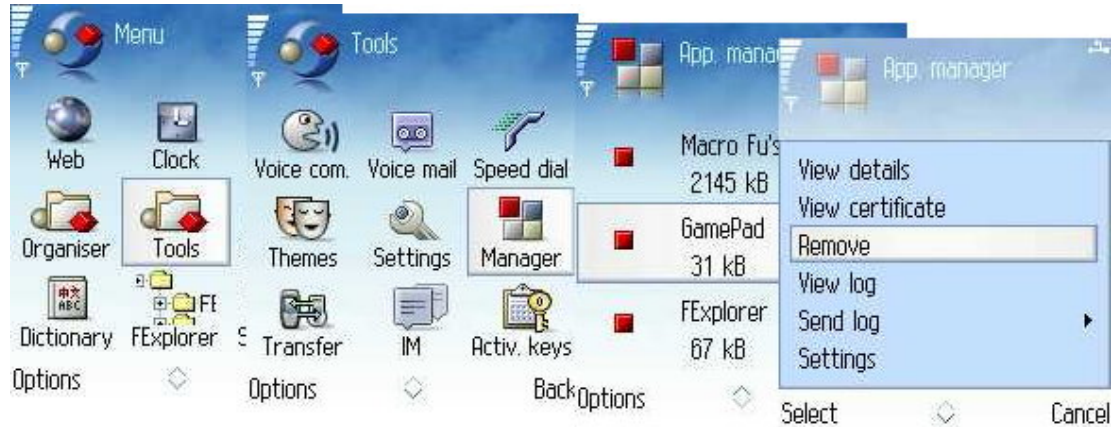


Figure 4

Upgrading BGP100 Bluetooth GamePad Driver

Please check the agent's website regularly for any new driver release (Note: the current driver **MUST** be removed **BEFORE** installing a new driver in your Smartphone device).

Configuring BGP100 Bluetooth GamePad

- When you click the “GamePad” icon, the following pages “Config”, and “About” will appear. (Figure 5)

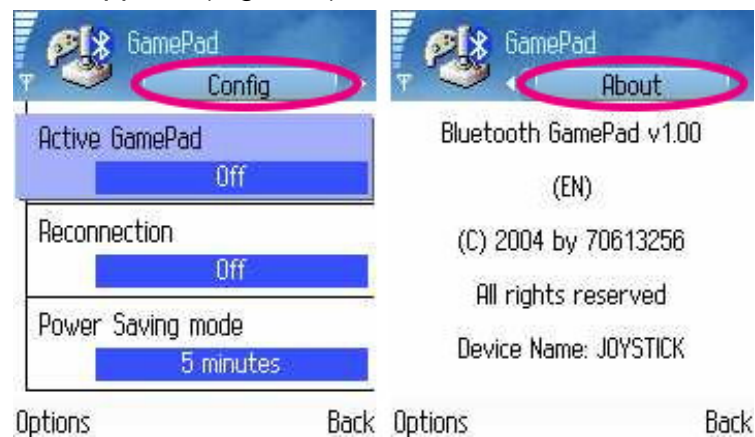


Figure 5

- How to switch the page of driver interface?
Method 1: Please use the left/right direction buttons on your Smartphone to switch the page.
Method 2: Please use the left soft key on your Smartphone and select “Options” on your Smartphone, then switch page by clicking the contents under “Options”. (Figure 6)



Figure 6

The Illustration of “Config” Page

➤ **Active GamePad**

- How to connect the Bluetooth GamePad with your Smartphone?

Step 1: Turn on the Bluetooth GamePad. The LED will flash blue and red at once. When the LED flashes a “blue” light once every 2 seconds, it is in standby mode and can be detected by your Smartphone device.

Step 2: Select “GamePad” icon in the application list of your Smartphone. (Figure 7)



Figure 7

Step 3: Select “on” for “Active GamePad” to scan the Bluetooth GamePad. A link will be established automatically. (Figure 8)



Figure 8

Step 4: When the connection is established successfully, you will find the Bluetooth icon on your Smartphone (Figure 9). The LED will then flash a “blue” light twice every 4 seconds.



Figure 9

➤ **Reconnection**

When the connection is established successfully, you can then turn on “Reconnection”. This function allows the Bluetooth GamePad to memorize the last connected device, and it will speed up the process for future connection (Note: please do not use “Reconnection” before the initial connection is established).

➤ **Power Saving Mode**

This option allows power saving for the connection of your Bluetooth GamePad after an “Idle” Period. (Figure 10)



Figure 10

➤ **The “About” Page**

How to find out the version of Bluetooth GamePad driver which you are using?

Please click “About” page (Figure 11)

Driver Version: v 1.00

English Version: EN

German Version: DE

French Version: FR



Figure 11

➤ **Defining “Up” Arrow Key**

The “Up” arrow key can be defined as the following list of selected keys on your Smartphone device: “Up/Down/Left/Right Arrow” keys, “Select” key, “Left/Right” soft keys, “Menu” key, “Number 0-10” keys, and “*” / “#” symbol keys. (Figure 12)



Figure 12

➤ **Defining “Down” Arrow Key**

The “Down” arrow key can be defined as the following list of selected keys on your Smartphone device: “Up/Down/Left/Right Arrow” keys, “Select” key, “Left/Right” soft keys, “Menu” key, “Number 0-10” keys, and “*” / “#” symbol keys. (Figure 13)



Figure 13

➤ **Defining “Left” Arrow Key**

The “Left” arrow key can be defined as the following list of selected keys on your Smartphone device: “Up/Down/Left/Right Arrow” keys, “Select” key, “Left/Right” soft keys, “Menu” key, “Number 0-10” keys, and “*” / “#” symbol keys. (Figure 14)



Figure 14

➤ **Defining “Right” Arrow Key**

The “Right” arrow key can be defined as the following list of selected keys on your Smartphone device: “Up/Down/Left/Right Arrow” keys, “Select” key, “Left/Right” soft keys, “Menu” key, “Number 0-10” keys, and “*” / “#” symbol keys. (Figure 15)



Figure 15

➤ **Defining “Left” Soft Key**

The “Left” soft key can be defined as the following list of selected keys on your Smartphone device: “Up/Down/Left/Right Arrow” keys, “Select” key, “Left/Right” soft keys, “Menu” key, “Number 0-10” keys, and “*” / “#” symbol keys. (Figure 16)



Figure 16

➤ **Defining “Right” Soft Key**

The “Right Soft” key can be defined as the following list of selected keys on your Smartphone device: “Up/Down/Left/Right Arrow” keys, “Select” key, “Left/Right” soft keys, “Menu” key, “Number 0-10” keys, and “*” / “#” symbol keys. (Figure 17)



Figure 17

➤ **Defining “Start” Key**

The “Start” key can be defined as the following list of selected keys on your Smartphone device: “Up/Down/Left/Right Arrow” keys, “Select” key, “Left/Right” soft keys, “Menu” key, “Number 0-10” keys, and “*” / “#” symbol keys. (Figure 18)



Figure 18

➤ **Defining Button “A”**

Button “A” can be defined as the following list of selected keys on your Smartphone device: “Up/Down/Left/Right Arrow” keys, “Select” key, “Left/Right” soft keys, “Menu” key, “Number 0-10” keys, and “*” / “#” symbol keys. (Figure 19)



Figure 19

➤ **Defining Button “B”**

Button “B” can be defined as the following list of selected keys on your Smartphone device: “Up/Down/Left/Right Arrow” keys, “Select” key, “Left/Right” soft keys, “Menu” key, “Number 0-10” keys, and “*” / “#” symbol keys. (Figure 20)



Figure 20

➤ **Defining Button “C”**

Button “C” can be defined as the following list of selected keys on your Smartphone device: “Up/Down/Left/Right Arrow” keys, “Select” key, “Left/Right” soft keys, “Menu” key, “Number 0-10” keys, and “*” / “#” symbol keys. (Figure 21)



Figure 21

➤ **Defining Button “D”**

Button “D” can be defined as the following list of selected keys on your Smartphone device: “Up/Down/Left/Right Arrow” keys, “Select” key, “Left/Right” soft keys, “Menu” key, “Number 0-10” keys, and “*” / “#” symbol keys. (Figure 22)



Figure 22

Appendices

● Appendix 1: LED

The light (LED) located on the right wing above the “Start” Key indicates the status of your BGP100 Bluetooth GamePad

- 1) The LED flashes blue and red at once when the power of your Bluetooth GamePad has been switched on.
- 2) When the LED flashes a “blue” light approximately once every 2 seconds, it is on standby mode and can be detected by your Smartphone device.
- 3) When the LED flashes a “blue” light approximately twice every 4 seconds, it is connected to your Smartphone device and is ready for use.
- 4) When the LED flashes a “red” light ONLY, it indicates that the battery needs to be replaced in order to resume normal operation.

- **Appendix 2: Product & Technical Specifications**

- 1) Function

Arrow Keys: Up/down/Left/Right (4-way)

Custom Buttons: 6 (A, B, C, D, Left and Right)

Start Key: 1

- 2) Electronics

Bi-color LED: 1

Battery: 1 (1.5V “AAA” battery)

Power on/off switch: 1

Standby Current: 1~10mA, depending on handheld device

Operation Current: 2~50mA, depending on handheld device

Standby Time: 39/H, connected and ready for use

Operation Time: 9/H, functioning continuously

- 3) Mechanics

Dimensions Closed: 145mm x 44mm x 30.5mm

Dimensions Open: 145mm x 127.32mm x 30.5mm

Weight (including 1.5V*1)

- 4) Operating Environment

Operating Temperature Range: -10~50°C (Humidity 5~90%RH)

Storage Temperature Range: -30~70°C (Humidity 5~90%RH)

Relative Humidity: 95% at 65°C

ESD Immunity: ±8KV

● **Appendix 3: Troubleshooting**

1. My Smartphone has no response when it is connected with the Bluetooth Gamepad.
 - ✧ Check the LED status to see if the Bluetooth GamePad is properly connected to your device or if the battery needs to be replaced.
 - ✧ Your Smartphone battery may need to be recharged.
2. Can I store the Bluetooth GamePad driver into my storage card?
 - ✧ Yes.
3. I have difficulty removing the Bluetooth GamePad driver from my device.
 - ✧ Please check if the Bluetooth GamePad is in link mode. If it is, please close the application from your device and try again.

This device complies with Part 15 of the FCC Rules. Operation is subject to the following two conditions:

This device may not cause harmful interference.

This device must accept any interference received, including interference that may cause undesired operation.

This equipment has been tested and found to comply with the limits for a class B digital device, pursuant to part 15 of the FCC Rules. These limits are designed to provide reasonable protection against harmful interference in a residential installation.

This equipment generates, uses and can radiate radio frequency energy and, if not installed and used in accordance with the instructions, may cause harmful interference to radio communications. However, there is no guarantee that interference will not occur in a particular installation. If this equipment does cause harmful interference to radio or television reception, which can be determined by turning the equipment off and on, the user is encouraged to try to correct the interference by one or more of the following measures:

---Reorient or relocate the receiving antenna.

---Increase the separation between the equipment and receiver.

---Connect the equipment into an outlet on a circuit different from that to which the receiver is connected.

---Consult the dealer or an experienced radio/TV technician for help.

Installation and use of this Bluetooth gamepad must be in strict accordance with the instructions included in the user documentation provided with the product. Any changes or modifications (including the antennas) made to this device that are not expressly approved by the manufacturer may void the user's authority to operate the equipment. The manufacturer is not responsible for any radio or television interference caused by unauthorized modification of this device, or the substitution of the connecting cables and equipment other than manufacturer specified. It is the responsibility of the user to correct any interference caused by such unauthorized modification, substitution or attachment. Manufacturer and its authorized resellers or distributors will assume no liability for any damage or violation of government regulations arising from failing to comply with these guidelines.

FCC RF Radiation Exposure Statement: This equipment complies with FCC RF radiation exposure limits set forth for an uncontrolled environment.