



FCC ID : SJJPAT-42EPI9N

SEPTEMBER 10, 2004
Federal Communications Commission
Equipment Approval Services
7435 Oakland Mills Road
Columbia, MD 21046

SUBJECT : idisplay.tv corporation
FCC ID: SJJPAT-42EPI9N
FCC Part 15 Subpart B Certification

Gentlemen:

Transmitted herewith, on behalf of idisplay.tv corporation is an application for a FCC Part 15 Subpart B Certification of the following PDP TV Monitor:

FCC ID : SJJPAT-42EPI9N

Model : PAT-42EPI9N

Attached is the applicant's Cover Letter, External/Internal Photos, Test Set-Up Photos, FCC ID & Label Location, User's Manual, Block Diagram and Test Report.

Should you have any questions or comments concerning the above, please contact the undersigned.

Ki Soo Kim

KI SOO KIM
EMC MANAGER

cc: **Jonathan Park** ----- Manufacturing & Quality Managrment Dividion / MANAGER

• Solution for EMI

We, idisplay.tv corporation , announce that all modifications will be incorporated into each unit sold in the U.S.

- 1. Attach a gasket to the Rear Panel.**
- 2. Apply a ferrite Core to the Speaker Cable and the gasket to the Rear Speaker Panel.**

(Please refer to next page of the photographs for Solution for EMI)

idisplay.tv corporation

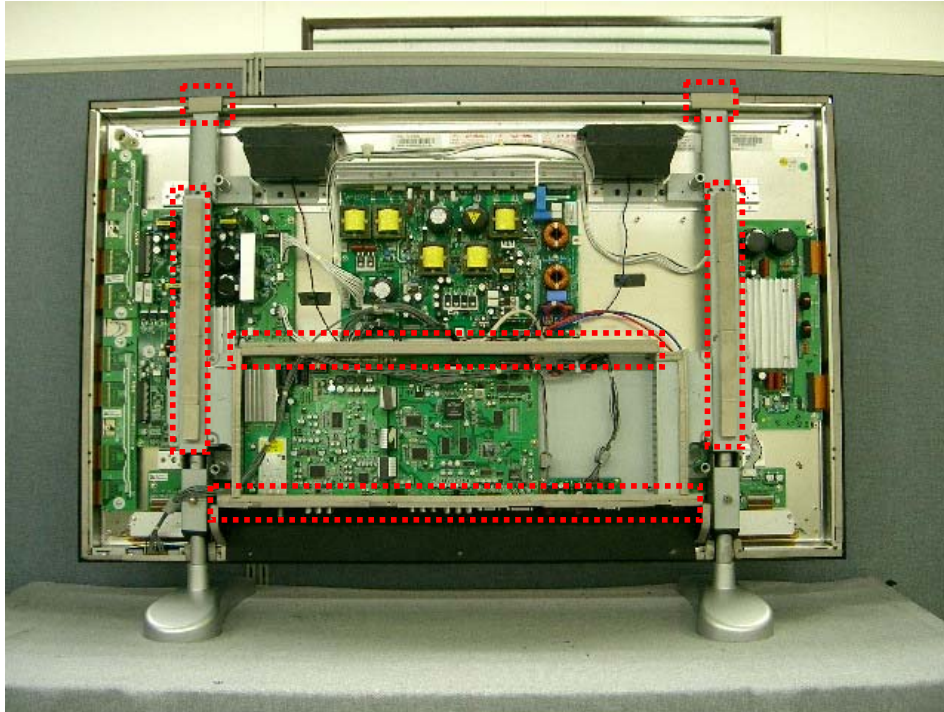
2004. 09. 14.

Manufacturing & Quality Managrment Dividion / MANAGER

Jonathan Park



1. Attach a gasket to the Rear Panel.



2. Apply a ferrite Core to the Speaker Cable and the gasket to the Rear Speaker Panel.

