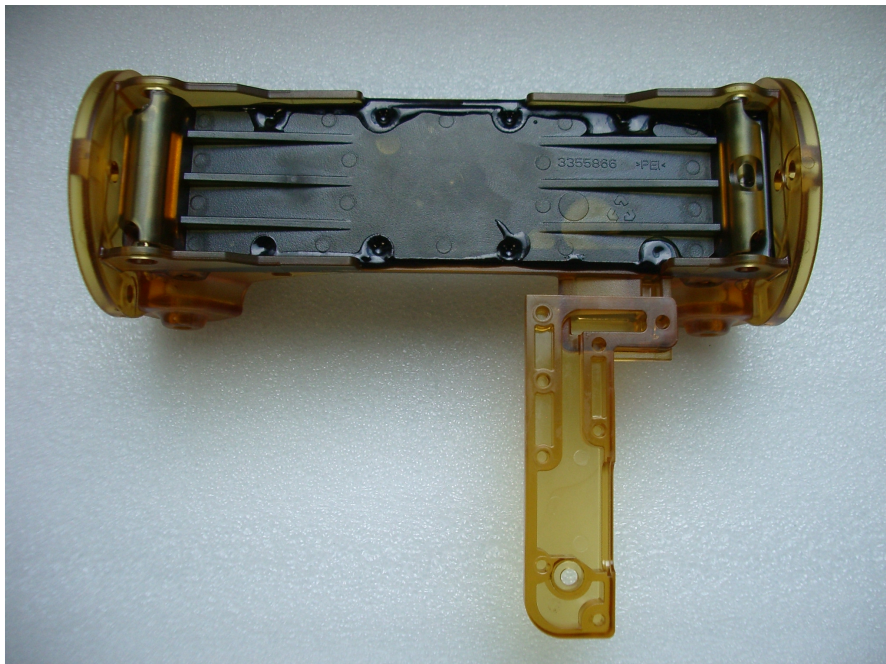
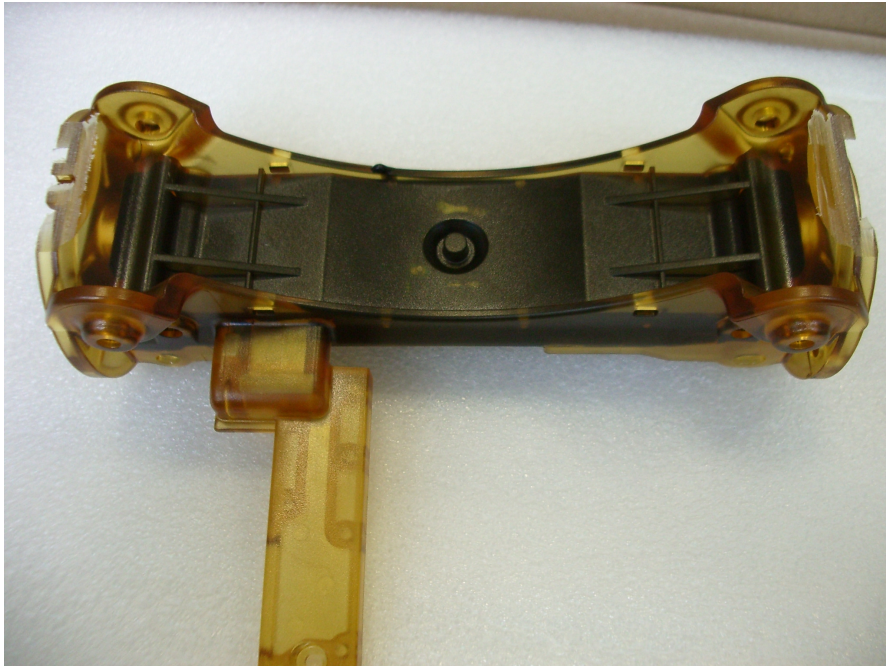
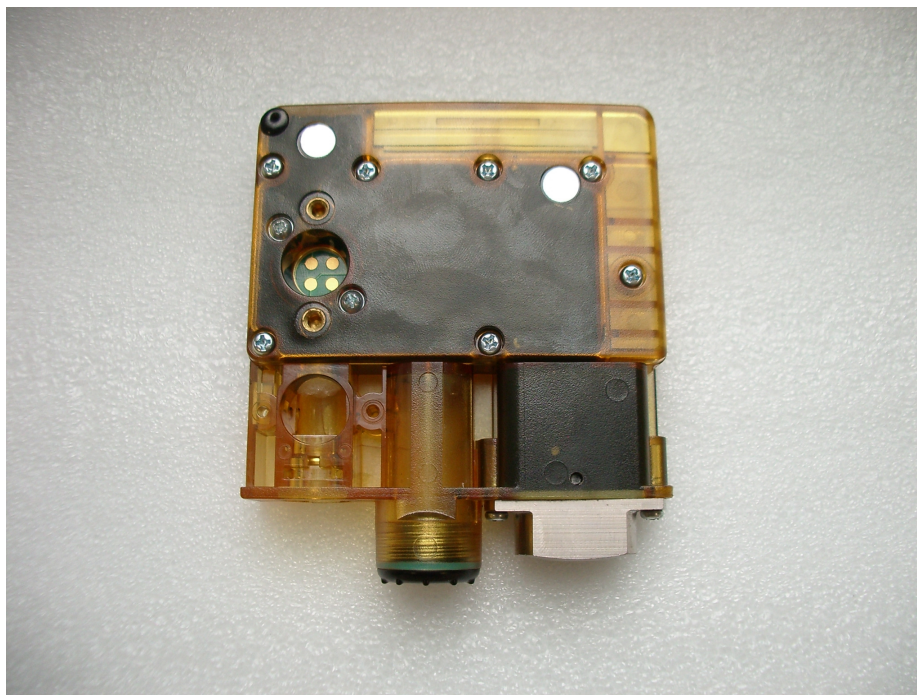
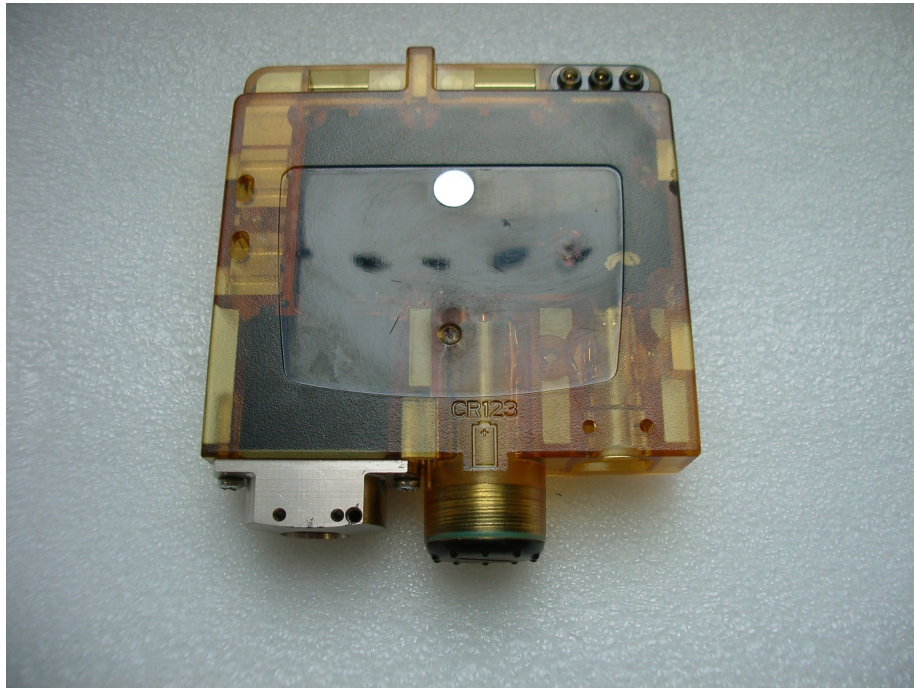


Second sounder unit is injection flood filled with encapsulant to fully enclose the unit and PCB. Photographs below show extent of encapsulant within the unit and that PCB is fully covered. Note: Translucent plastic parts used for this demonstration only.



**Second sounder**

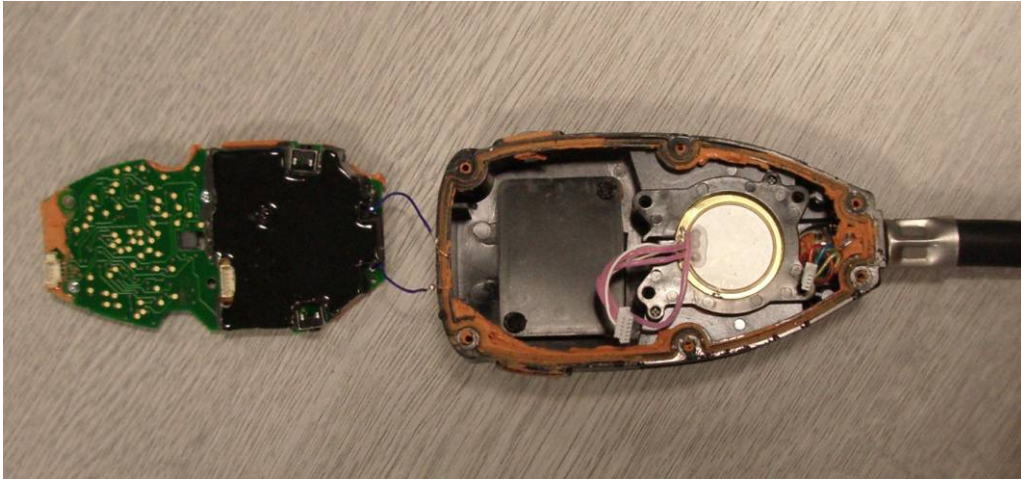
Backplate module unit is injection flood filled with encapsulant to fully enclose the unit and PCB. Photographs below show extent of encapsulant within the unit and that PCB is fully covered. Note: Translucent plastic parts used for this demonstration only.



**Backplate module**



Gauge unit PCB encapsulated as shown below.



**Gauge**