

# Jet-Speed<sup>®</sup> Installation Guide

Taejin Infotech Co., Ltd.

This Manual base on Windows 2003 Server English Platform, Screen shot will not equal to your screen only  
your convenience

## **FCC NOTE**

:This equipment has been tested and found to comply with the limits for a Class B digital device, pursuant to Part 15 of the FCC Rules. These limits are designed to provide reasonable protection against harmful interference in a residential installation. This equipment generates, uses and can radiate radio frequency energy and, if not installed and used in accordance with the instructions, may cause harmful interference to radio communications.

However, there is no guarantee that interference will not occur in a particular installation. If this equipment does cause harmful interference to radio or television reception, which can be determined by turning the equipment off and on, the user is encouraged to try to correct the interference by one or more of the following measures:

- Reorient or relocate the receiving antenna.
- Increase the separation between the equipment and receiver.
- Connect the equipment into an outlet on a circuit different from that to which the receiver is connected.
- Consult the dealer or an experienced radio/TV technician for help.

**THIS DEVICE COMPLIES WITH PART 15 OF THE FCC RULES.**

**OPERATION IS SUBJECT TO THE FOLLOWING TWO CONDITIONS:**

**(1) THIS DEVICE MAY NOT CAUSE HARMFUL INTERFERENCE, AND  
(2) THIS DEVICE MUST ACCEPT ANY INTERFERENCE RECEIVED,  
INCLUDING INTERFERENCE THAT MAY CAUSE UNDESIRE  
D OPERATION**

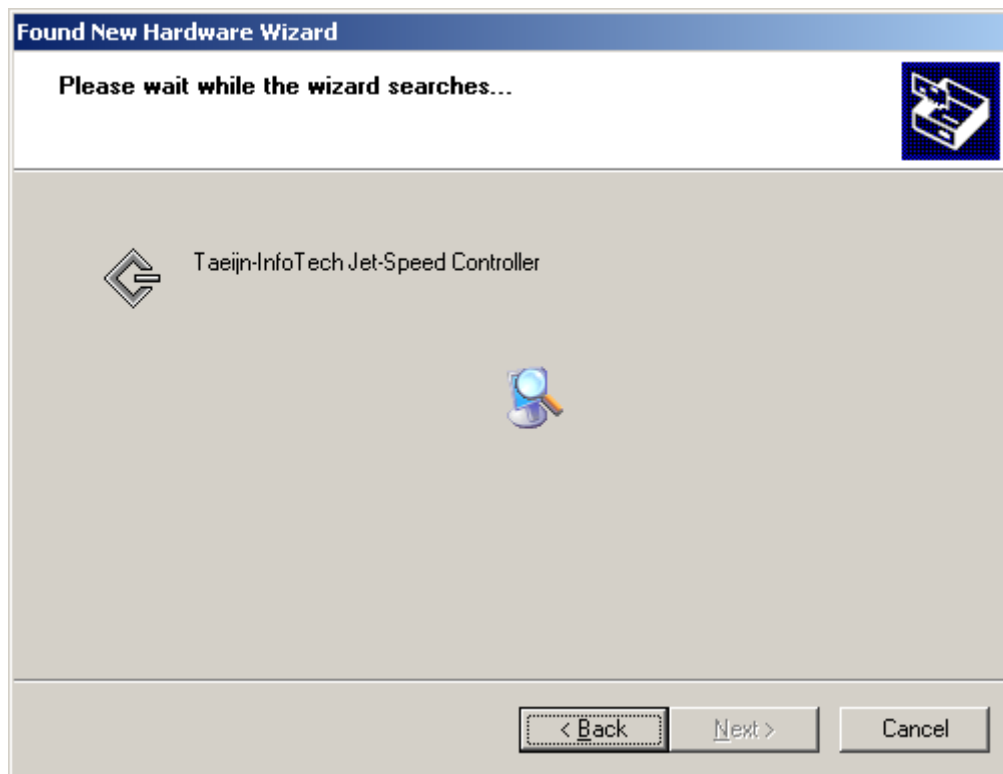
**THE MANUFACTURER IS NOT RESPONSIBLE FOR ANY RADIO OR TV  
INTERFERENCE CAUSED UNAUTHORIZED MODIFICATIONS TO THIS  
EQUIPMENT. SUCH MODIFICATIONS COULD VOID THE USER'S  
AUTHORITY TO OPERATE THE EQUIPMENT.**

## I. First time, installation Jet-Speed® to your system

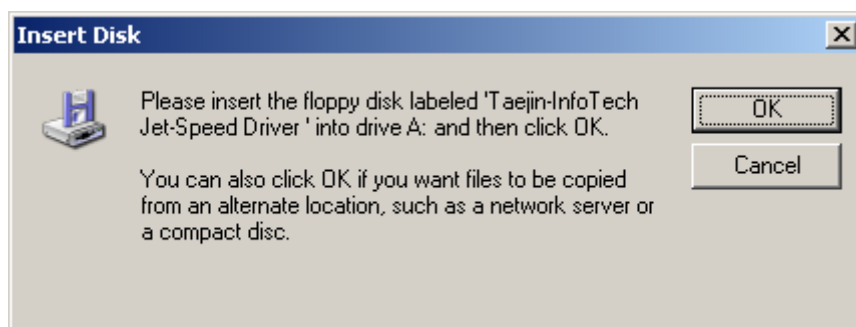
1. You must turn **off** system **power**.
2. If your system support **Hot Plug-in** and you have install to the Hot Plug-in support Slot, **follow** the system **manual** guide
3. Jet-Speed PCI card plug in to empty PCI Slot. Jet-Speed Support two different type as below
  1. PCI-32Bit /33MHz: Light Version
  2. PCI-64Bit /66MHz: Standard Version
4. Turn **on** system **power**.
5. System boot and you will see Windows upcoming logo screen.
6. If system found Jet-Speed first time, system will give “Found New Hardware” balloon message on taskbar.
7. System will prompt “Welcome to the Found New Hardware wizard” when is you have install first time. If you have already installed Jet-Speed and you have trying to put same slot, system will recognize Jet-Speed automatically.
8. Put Floppy diskette or CD-ROM accompanying with Jet-Speed Package to FDD or CD/DVD Drive.
9. Select “Install the software automatically (Recommended)” and click “Next >”



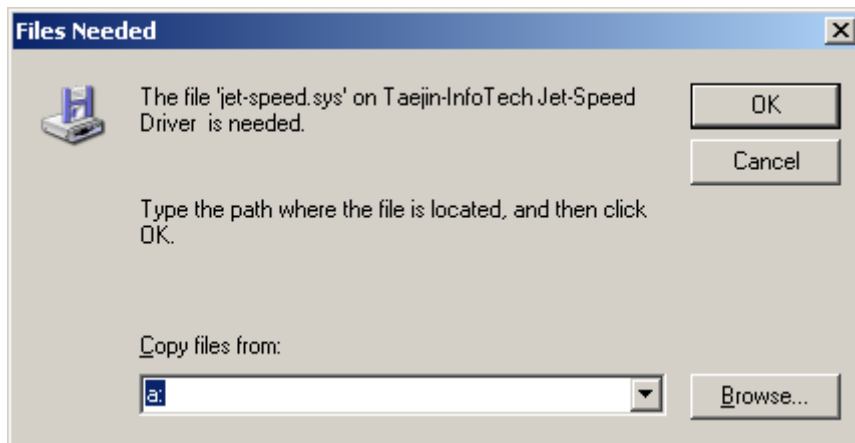
10. Windows searching for Jet-Speed Driver on your system.



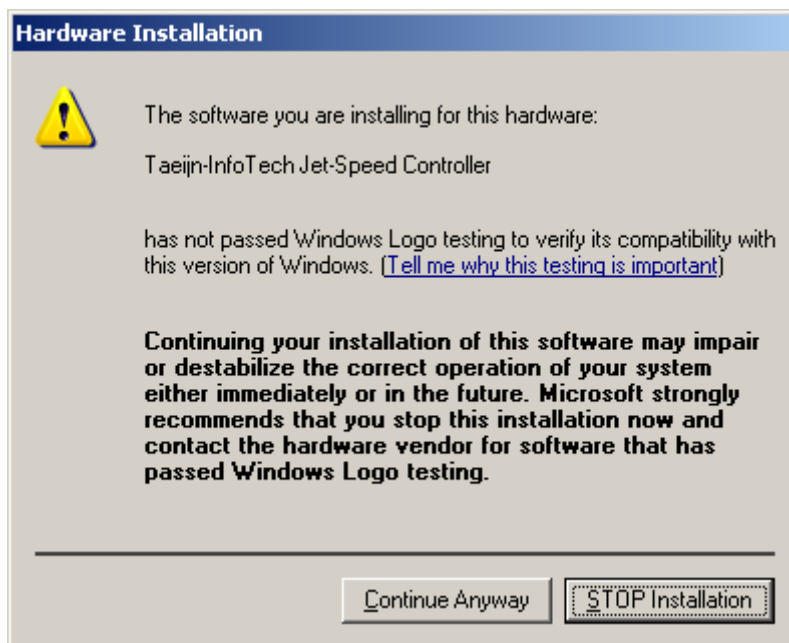
11. If windows appear “Insert Disk” dialog, you just click “Ok” when you already put the Jet-Speed driver media to FDD or CD/DVD drive.



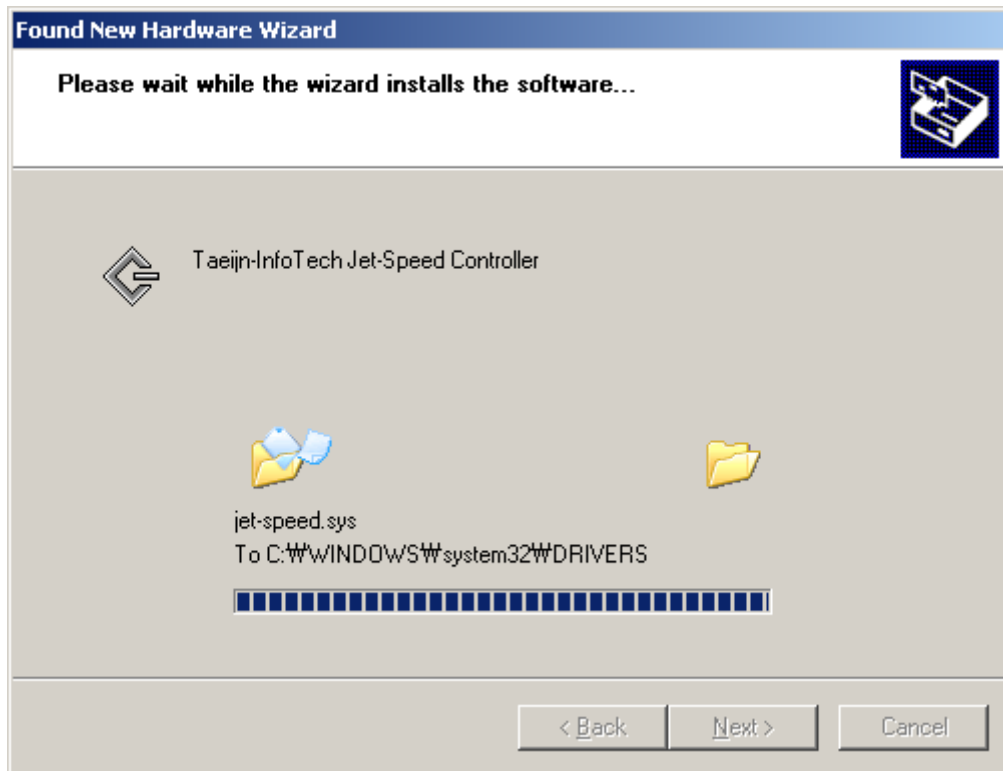
12. If Windows did not find driver software from FDD or CD/DVD drive, Windows will display “Files needed” dialog. At this time you must put Jet-Speed Driver Diskette or CD-ROM to their drive. And Click “Ok” to continue. But if you have any experience with specify target folder click “Browse...”



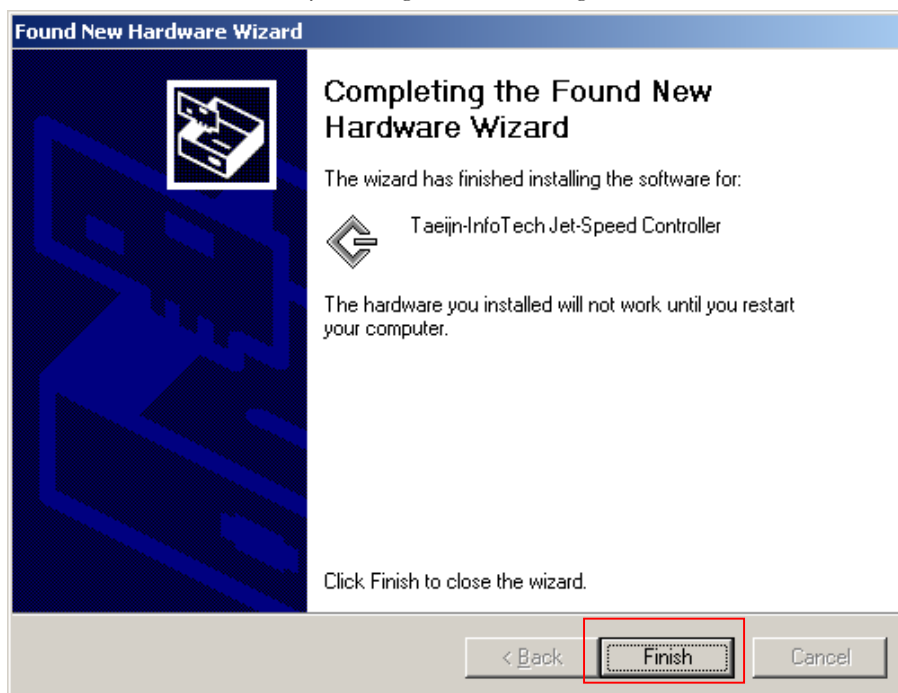
13. If Windows find Jet-Speed driver from any sources, will display “Hardware Installation” Dialog. This dialog will ask about trust of device driver which is do not pass from Microsoft. In this time you can click “Continue Anyway” button for continue to installation.



14. Windows copy driver to system from you have specified media or sources.



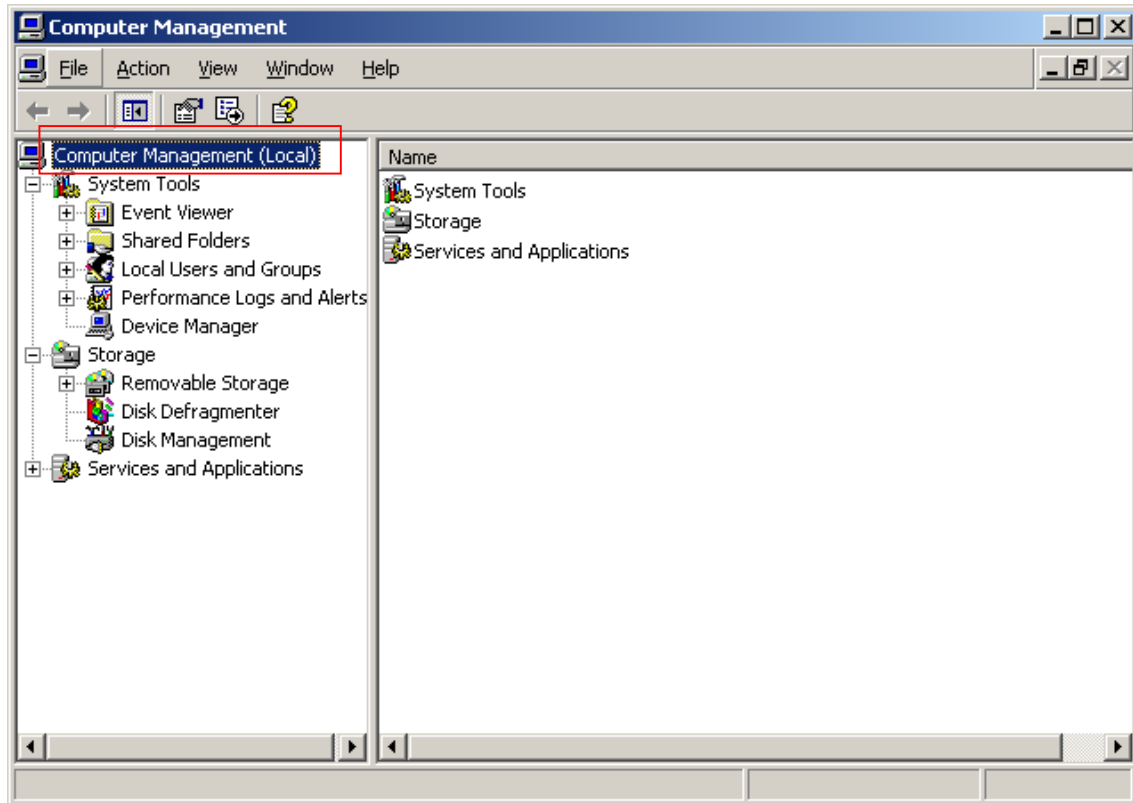
15. If you have see “Completing the Found New Hardware Wizard” you have successfully installed Jet-Speed on your system. [Congratulation!](#) Now you have ready to use of our Jet-Speed. Now just click “Finish” to finished driver installation. Some systems say like a “You need to restart for active installed hardware” you can ignore that message and continue to use.



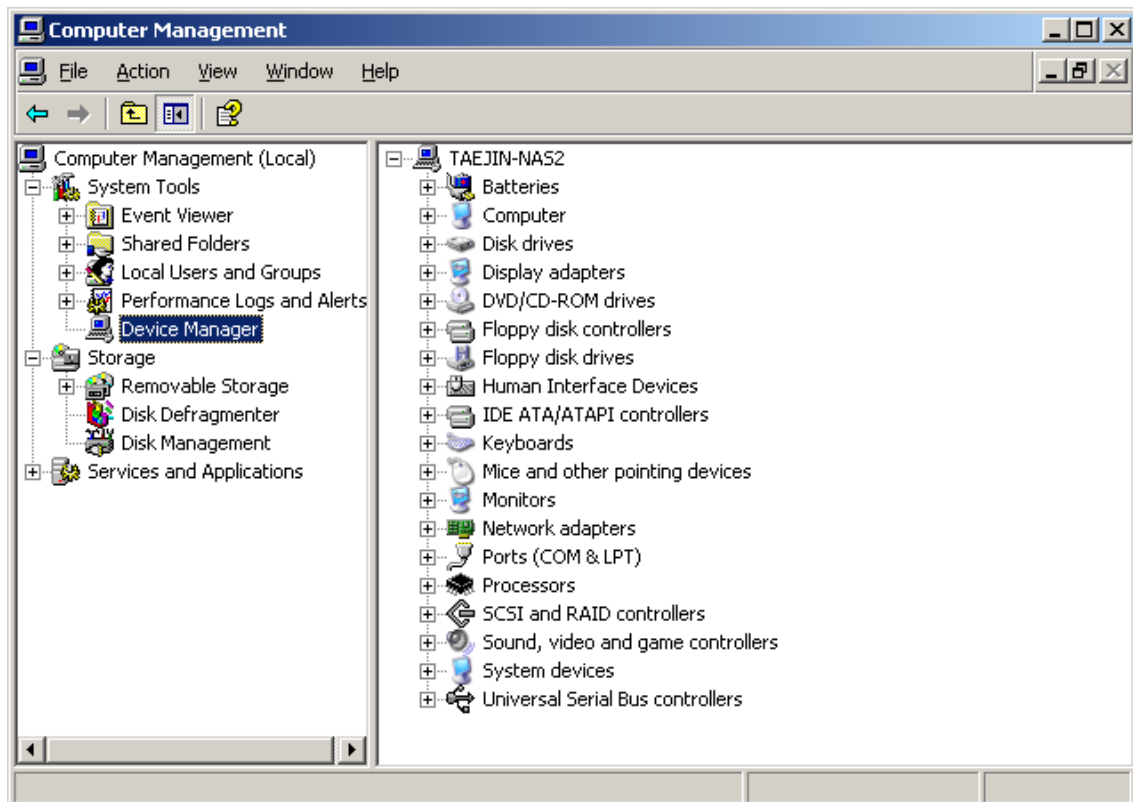
16. If you have more than two Jet-Speed on your system repeat step 9 to 15, when is completed install all uninstalled Jet-Speed.
17. Again. Thank you for using Jet-Speed.

## II. Check the Jet-Speed Installation.

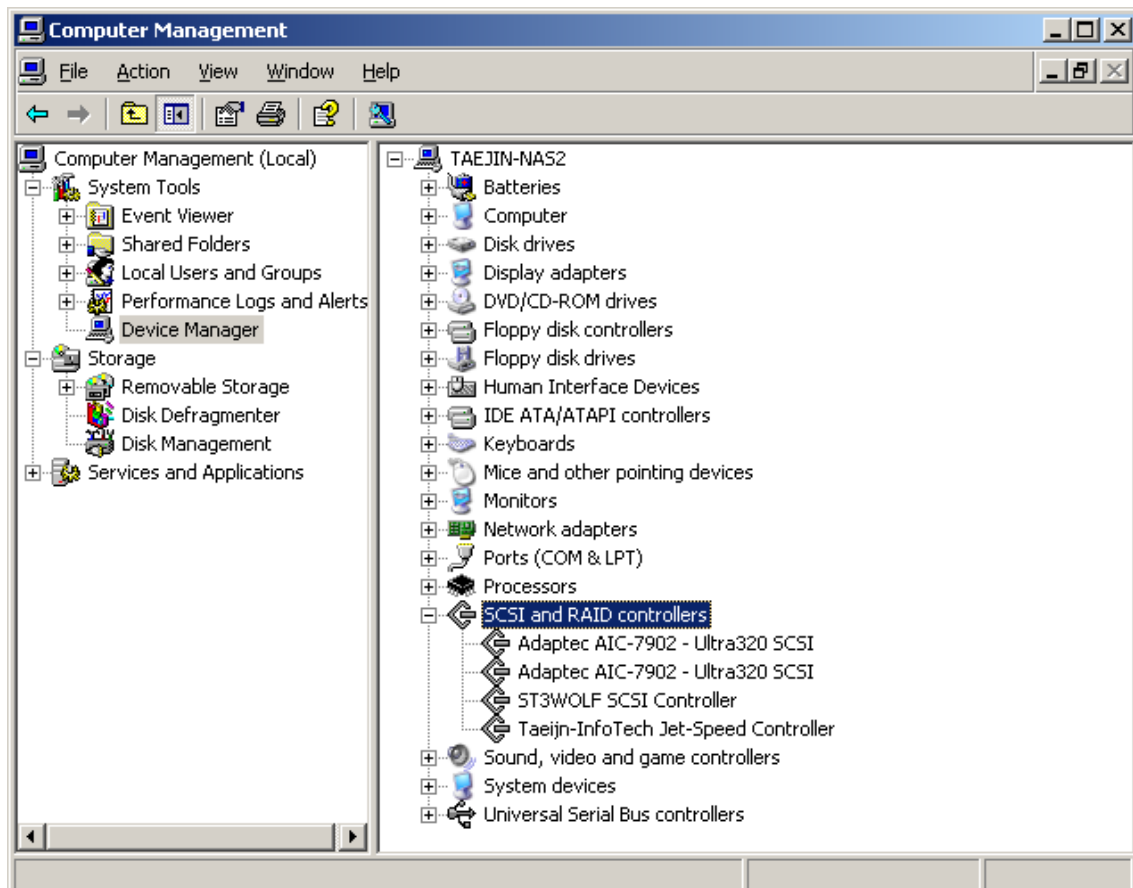
1. After the installation of New Jet-Speed on your system. You must configure Jet-Speed using Computer Management Tools.
2. It's on the Start->All Programs->Administrative Tools->Computer Management
3. You will see "Computer Management" dialog, such as below



4. Click "Computer Management (Local) -> System Tools -> Device manager" on the left pane.

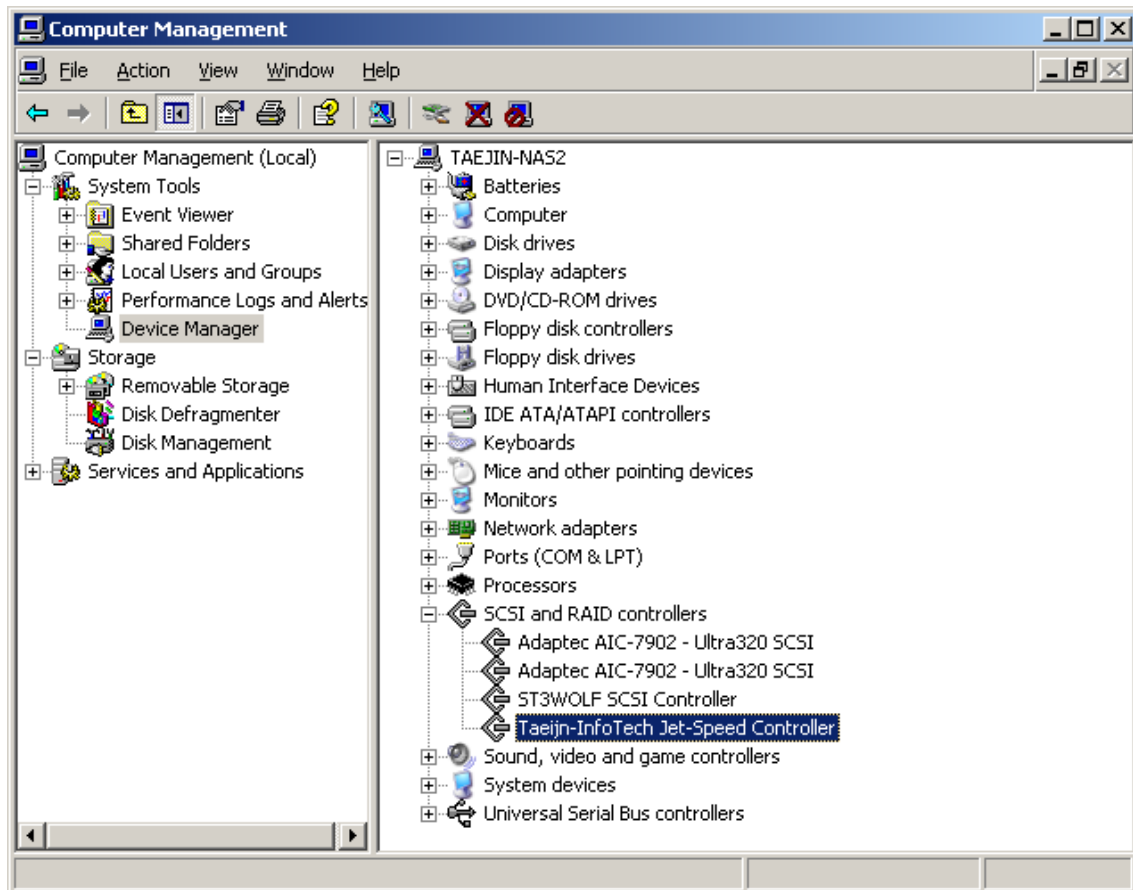


5. Select "SCSI and RAID Controller" on right pane



6. If you can see "Taejin Infotech Jet-Speed Controller" on SCSI and RAID Controller Branch. You have successfully installed Jet-Speed on your system.





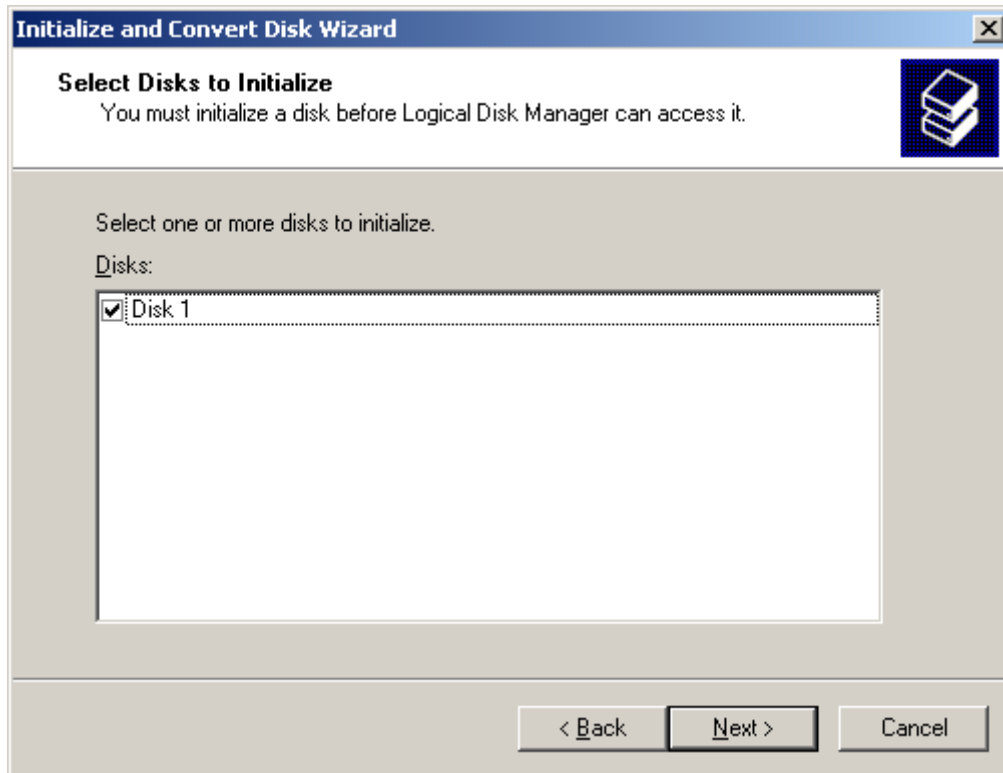
7. But if you can't see Jet-Speed on your system. You can try to reboot system and following the "First time, installation Jet-Speed® to your system" on this manual.

### III. Initializing

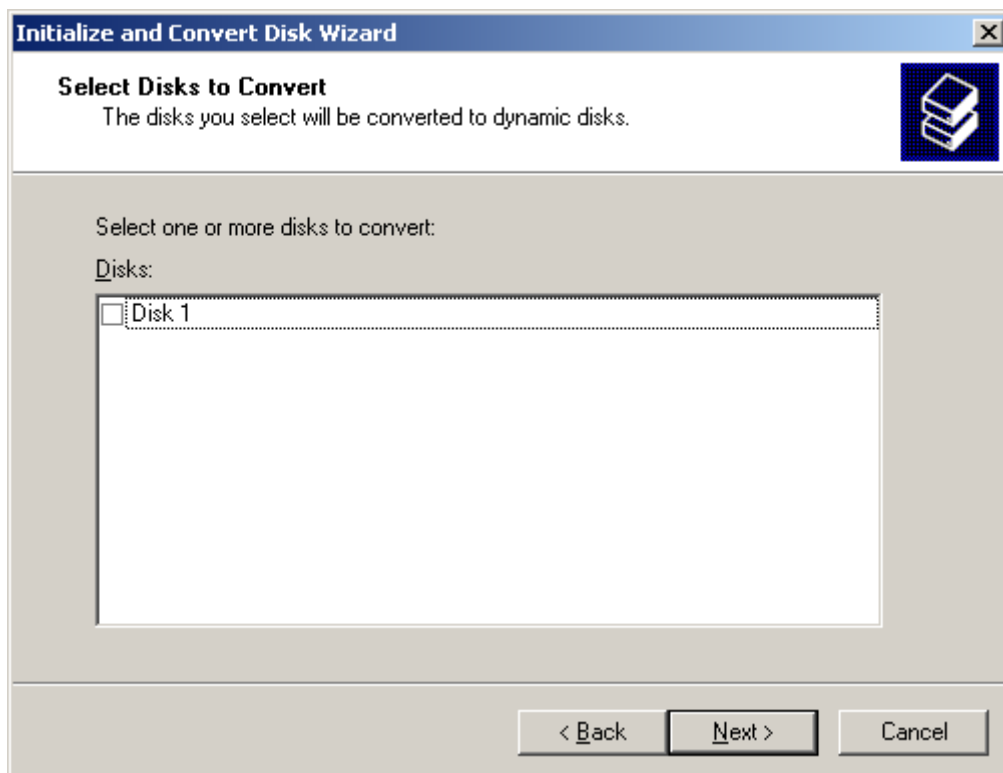
1. Open the “Computer Management” Console.
2. Select “Computer Management” -> Storage -> Disk Management” may you have see following screen first, because you just have installed Jet-Speed on your system. Click “Next >”. Sometimes it takes a more than a minute you must wait until it’s open.



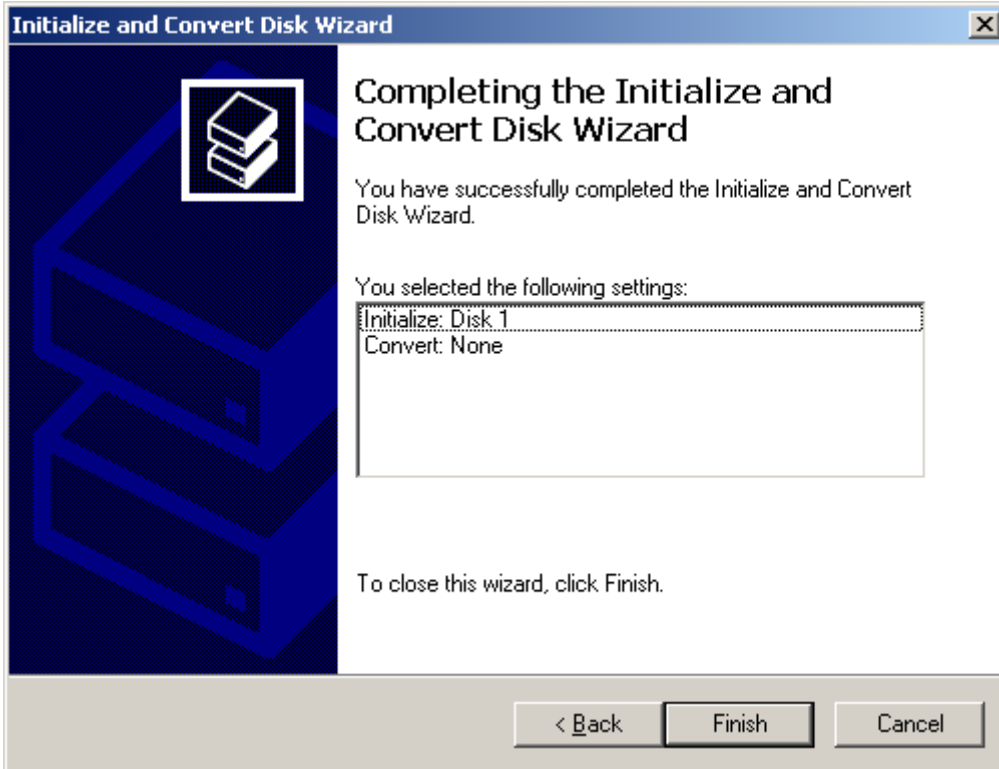
3. “Select Disks to Initialize” is appear, you may see Disk id of Jet-Speed on the dialog, if you have only single physical drive, Jet-Speed will be Disk 1 because first drive take a number 0 just checked “Disk 1” and click “Next >” to continue.



- Windows ask which drive convert to dynamic disk. If you use Basic Disk (Default) click “Next >”. If you have only 1(one) Jet-Speed, you will not need to convert to dynamic disk. Dynamic disk regularly use for RAID configuration. But if you want software RAID function, you must convert to Dynamic disk first.

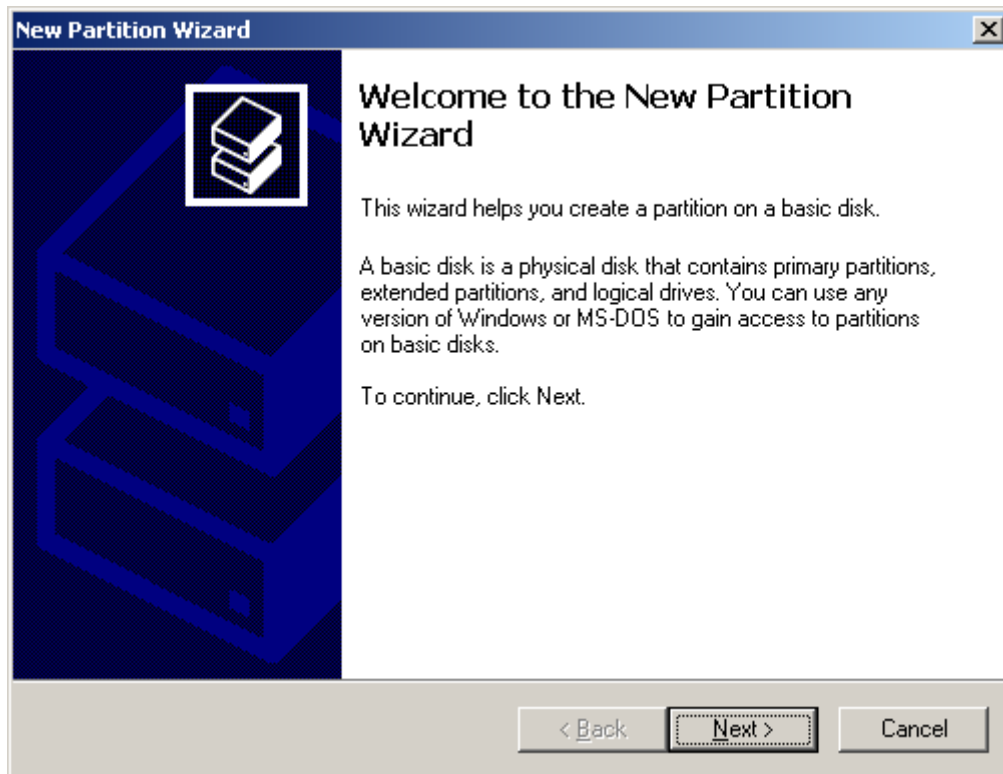


- [Conglutination!](#) Now you have completed initialize Jet-Speed. Now click “Finish” for Complete Initialize.

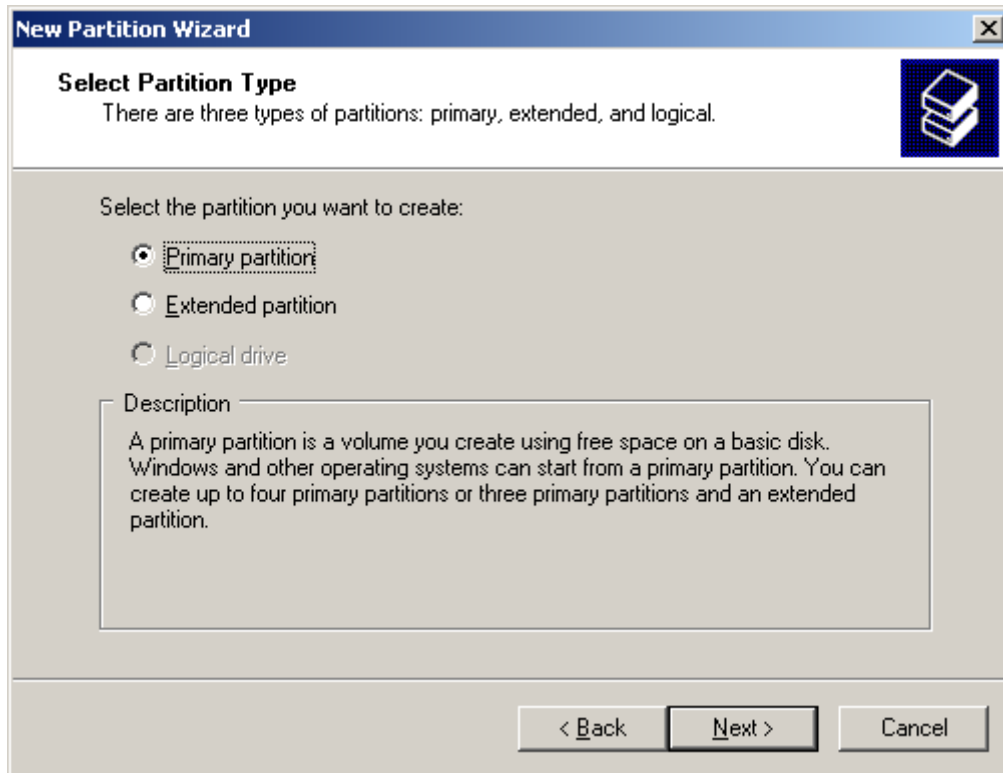


## IV. Formatting

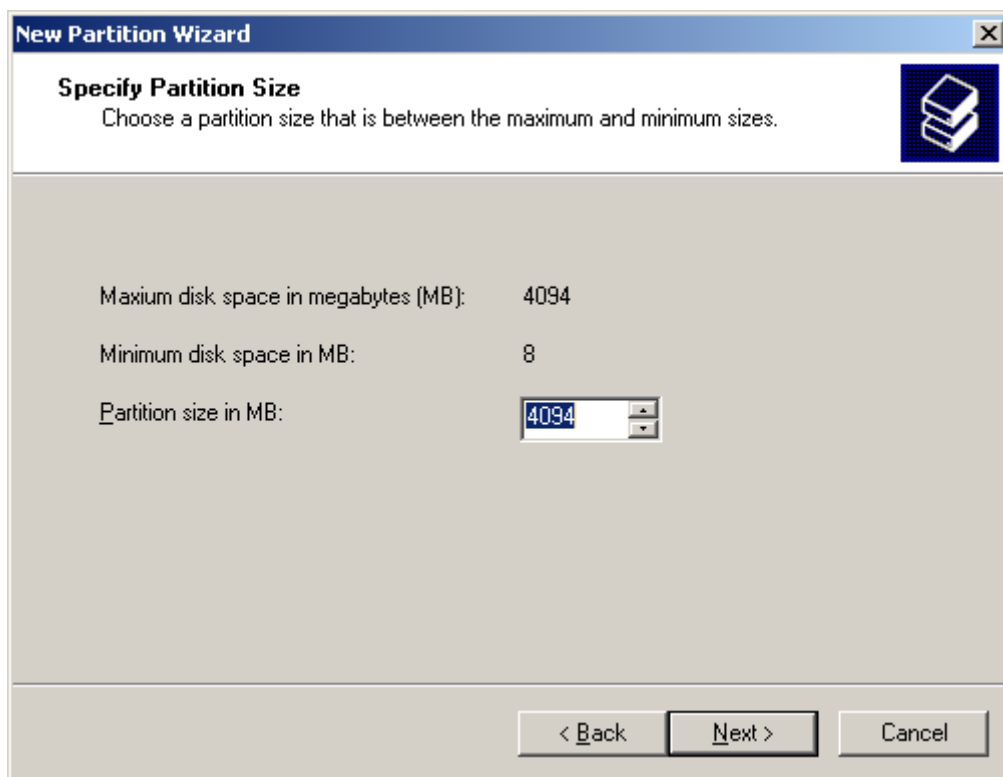
1. If you are here, almost you have done to use Jet-Speed.
2. Mouse right clicks on the Disk1 allocation area (shade area with size and unallocated caption).
3. Choose “New Partition...” after you will see “Welcome to the New Partition Wizard...” click “Next >” to continue.



4. Choose “Primary Partition” and Click “Next >” to continue. If you want to know any other options, please refer to windows 2003 manual.

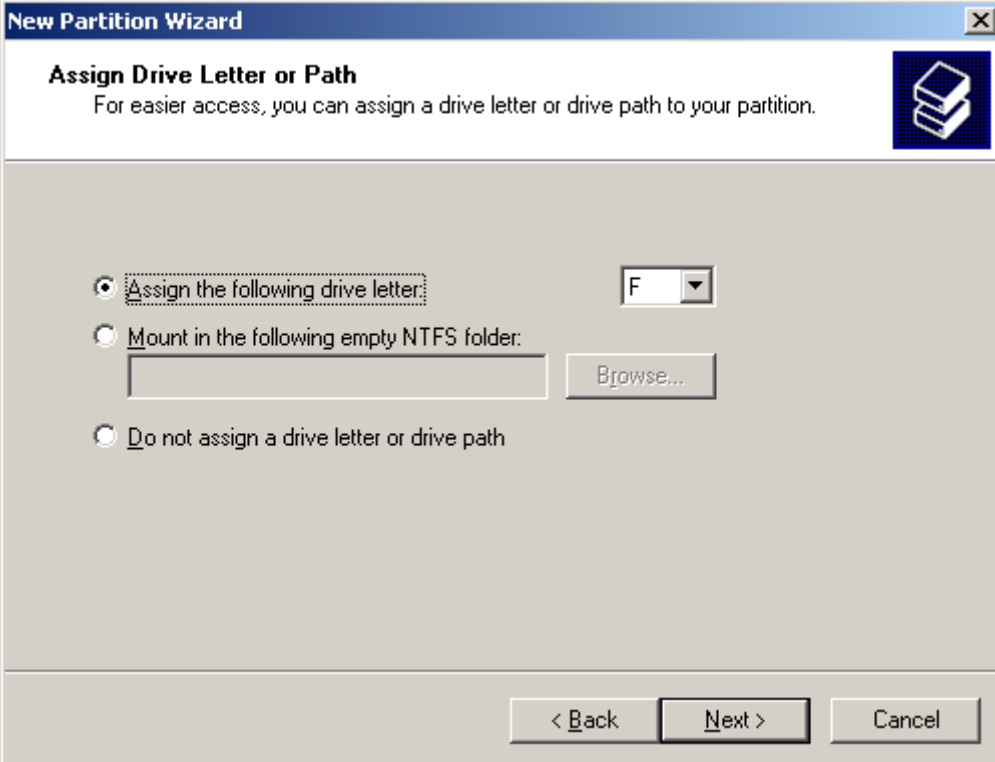


5. Set partition size you want to use and click “Next >” to continue. Default partition sizes are full capacity of Jet-Speed. If you want to know any other options, please refer to windows 2003 manual.



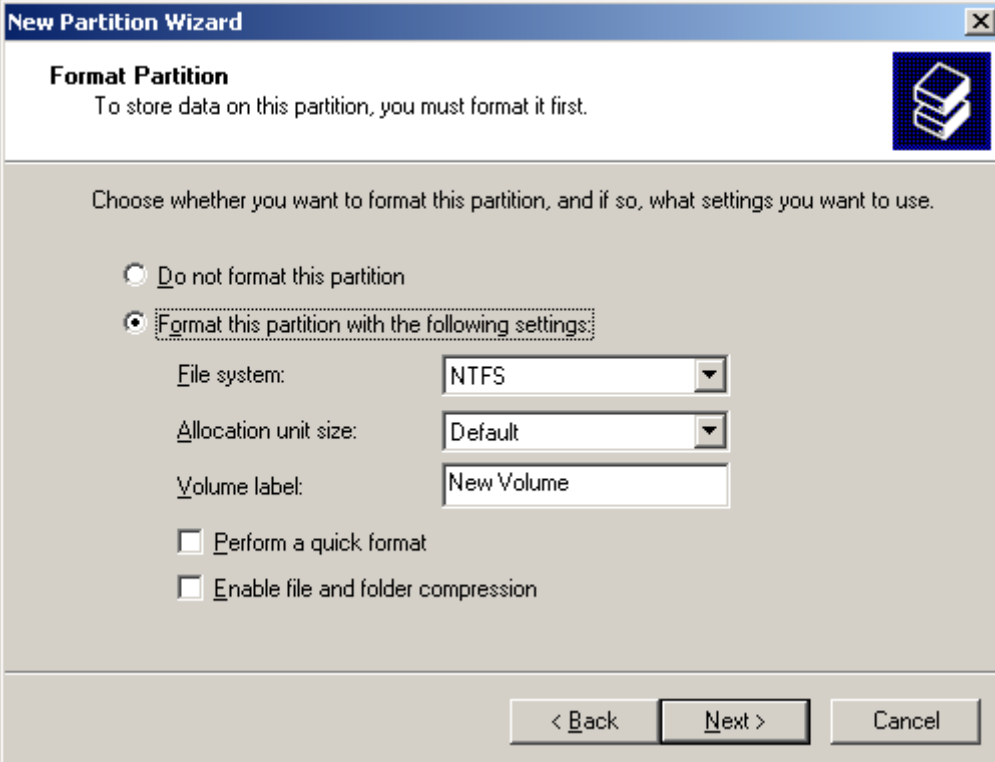
6. You can specify driver letter, mount folder and do not assign driver letter. In this time we are choose “Assign the following drive letter:” and “F” drive, Click “Next >” to continue. Drive letter will be first free available letter shown as default from Windows. If you want to know any other options, please refer

to windows 2003 manual.



The screenshot shows the 'New Partition Wizard' window at the 'Assign Drive Letter or Path' step. The title bar reads 'New Partition Wizard'. The main heading is 'Assign Drive Letter or Path' with a subtext: 'For easier access, you can assign a drive letter or drive path to your partition.' There are three radio button options: 1. 'Assign the following drive letter:' with a dropdown menu showing 'F'. 2. 'Mount in the following empty NTFS folder:' with an empty text box and a 'Browse...' button. 3. 'Do not assign a drive letter or drive path'. At the bottom are three buttons: '< Back', 'Next >', and 'Cancel'.

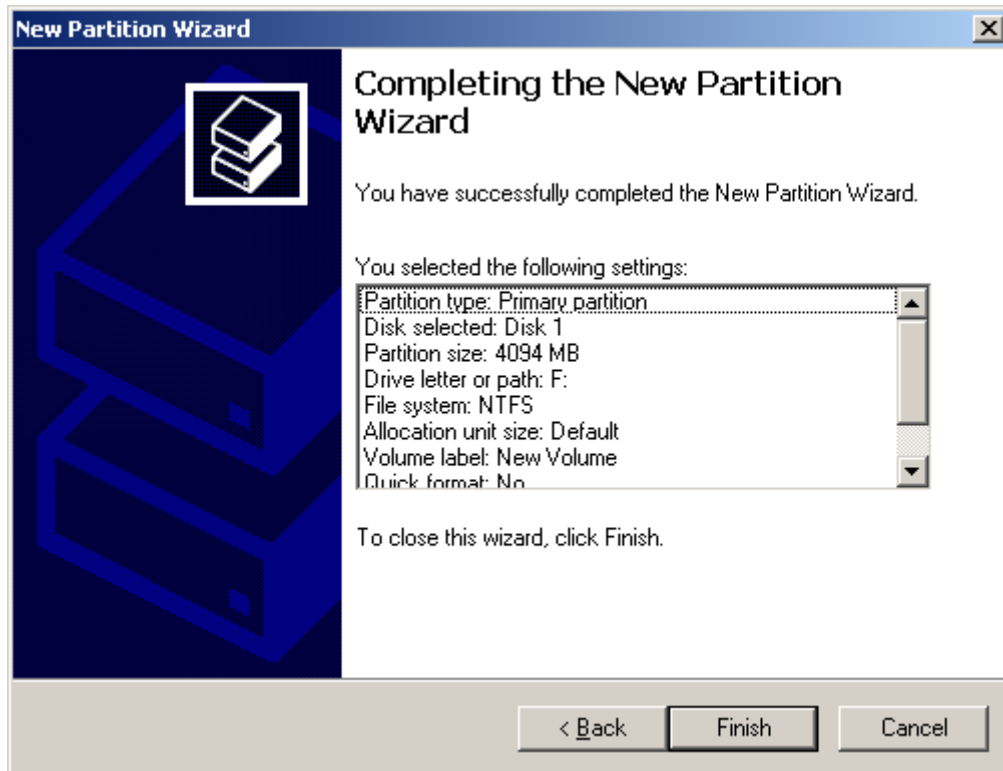
7. If you are using first time to use this (Initialized and partitioned) drive, you must format it. If you don't have format it you will not access. Choose "Format this partition with the following settings" and click "Next >" to continue. If you want to know any other options, please refer to windows 2003 manual.



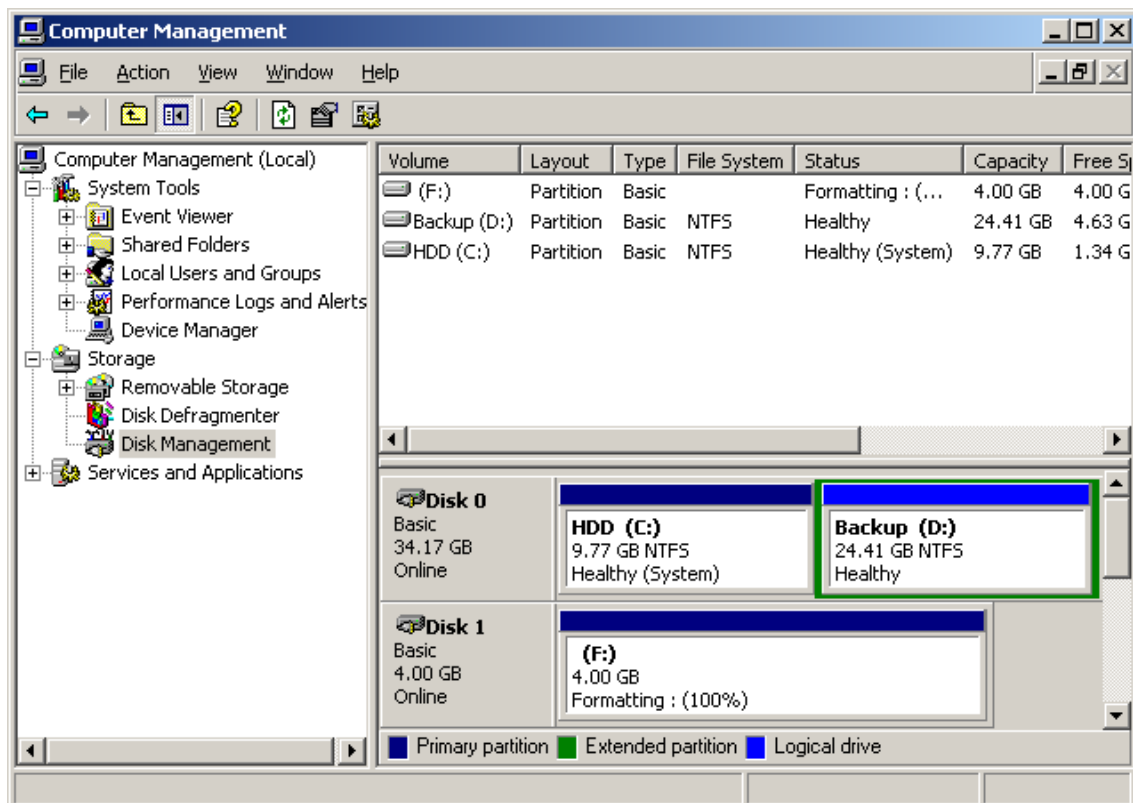
The screenshot shows the 'New Partition Wizard' window at the 'Format Partition' step. The title bar reads 'New Partition Wizard'. The main heading is 'Format Partition' with a subtext: 'To store data on this partition, you must format it first.' Below this is the instruction: 'Choose whether you want to format this partition, and if so, what settings you want to use.' There are two radio button options: 1. 'Do not format this partition'. 2. 'Format this partition with the following settings:' which is selected. Under the second option, there are three dropdown menus: 'File system:' set to 'NTFS', 'Allocation unit size:' set to 'Default', and 'Volume label:' set to 'New Volume'. There are also two checkboxes: 'Perform a quick format' and 'Enable file and folder compression', both of which are unchecked. At the bottom are three buttons: '< Back', 'Next >', and 'Cancel'.

8. Okay, now ready for format drive you want to use. Click "Finish" to continue. **Warning:** it just excise for

understanding. Stop here. If you continue to format, **you will lose any data on this drive**. But if you are first time, just click “Finish” to continue.



8. Windows format drive it now and you can see what percent completed. But sometimes you can not see, because Jet-Speed is very fast.



9. If completed format drive, you can see “New Volume (F:)” and specification (Partition and status)



information) on this drive.

10. Now! How can I say to you because “[You are arrival in the Jet-Speed world](#)”.

