

Appendix 2 Photodocumentation

Description: Case opened

Division Medical Technology/
Communication Technology/
EMC

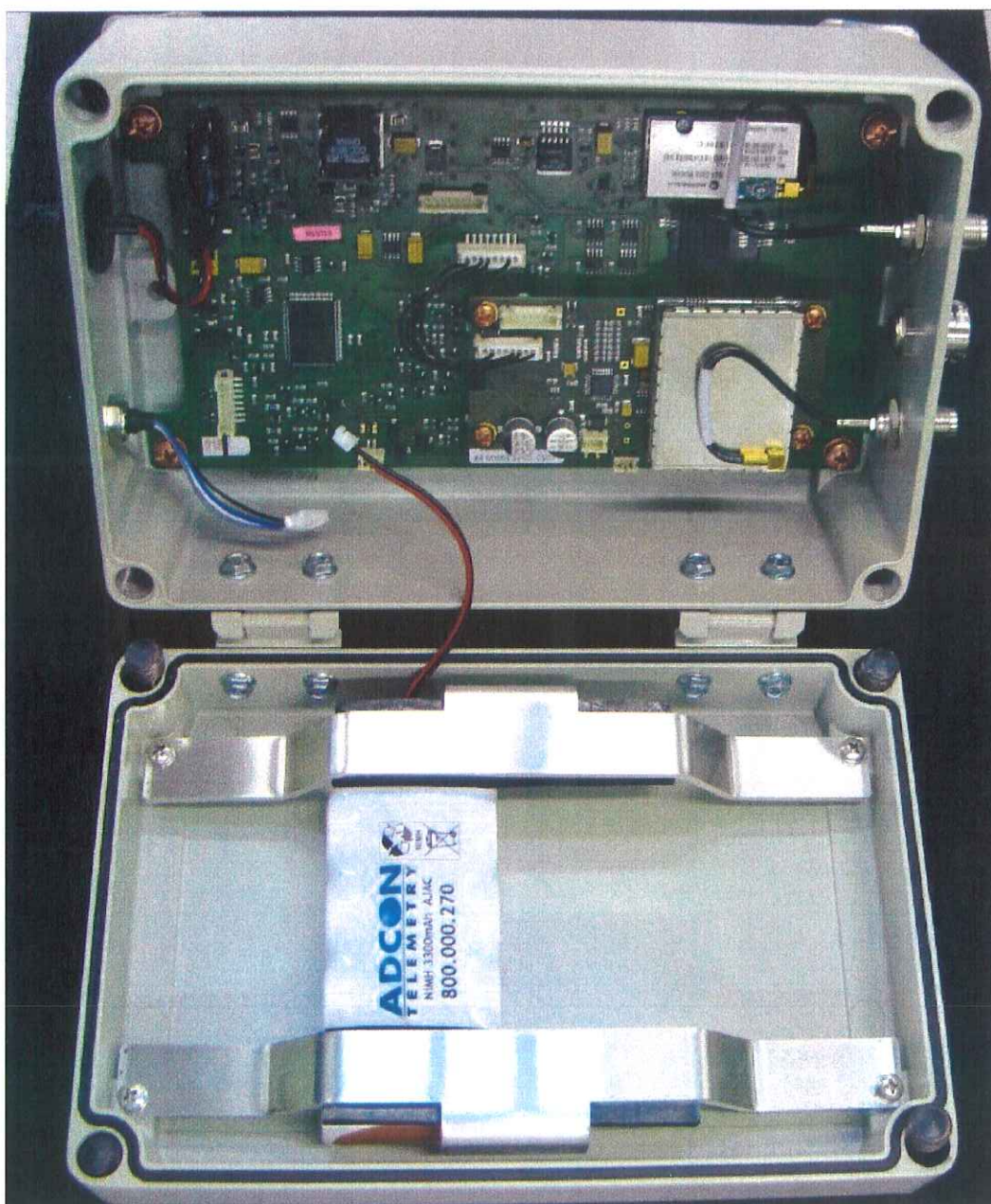
Department: FG

Test report reference:
M/FG-09/119

Page: 8 of 15

Date: 10.08.2009

checked by:



Appendix 2 Photodocumentation

Description: RA440 PCB

Division Medical Technology/
Communication Technology/
EMC

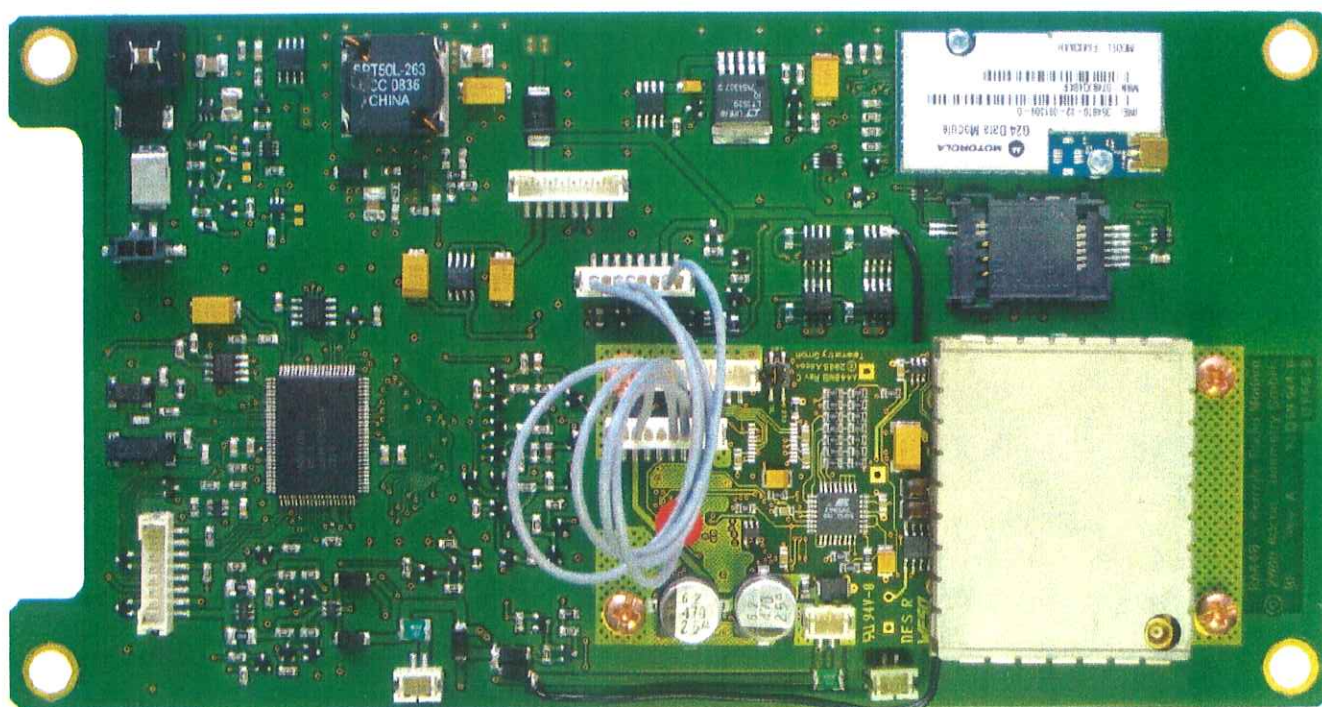
Department: FG

Test report reference:
M/FG-09/119

Page: 9 of 15

Date: 10.08.2009

checked by: M



Appendix 2 Photodocumentation

Description: A440 PCB top view

Division Medical Technology/
Communication Technology/
EMC

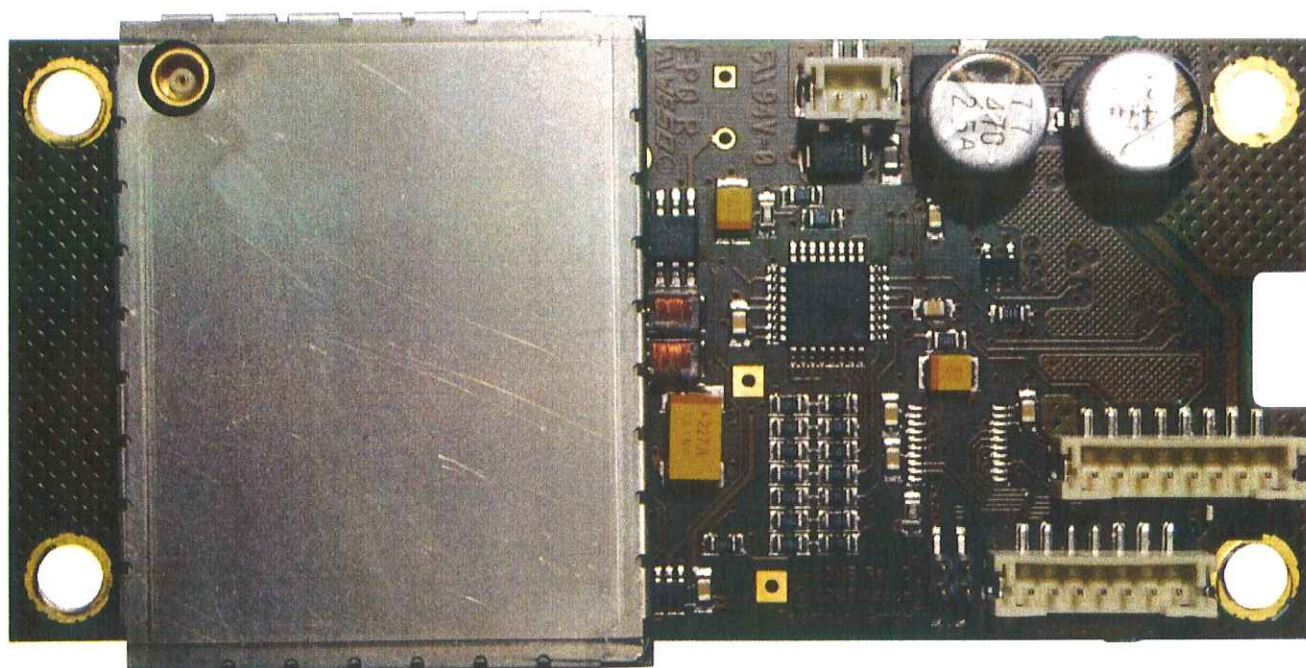
Department: FG

Test report reference:
M/FG-09/119

Page: 10 of 15

Date: 10.08.2009

checked by: H



Appendix 2 Photodocumentation

Description: A440 PCB bottom view

Division Medical Technology/
Communication Technology/
EMC

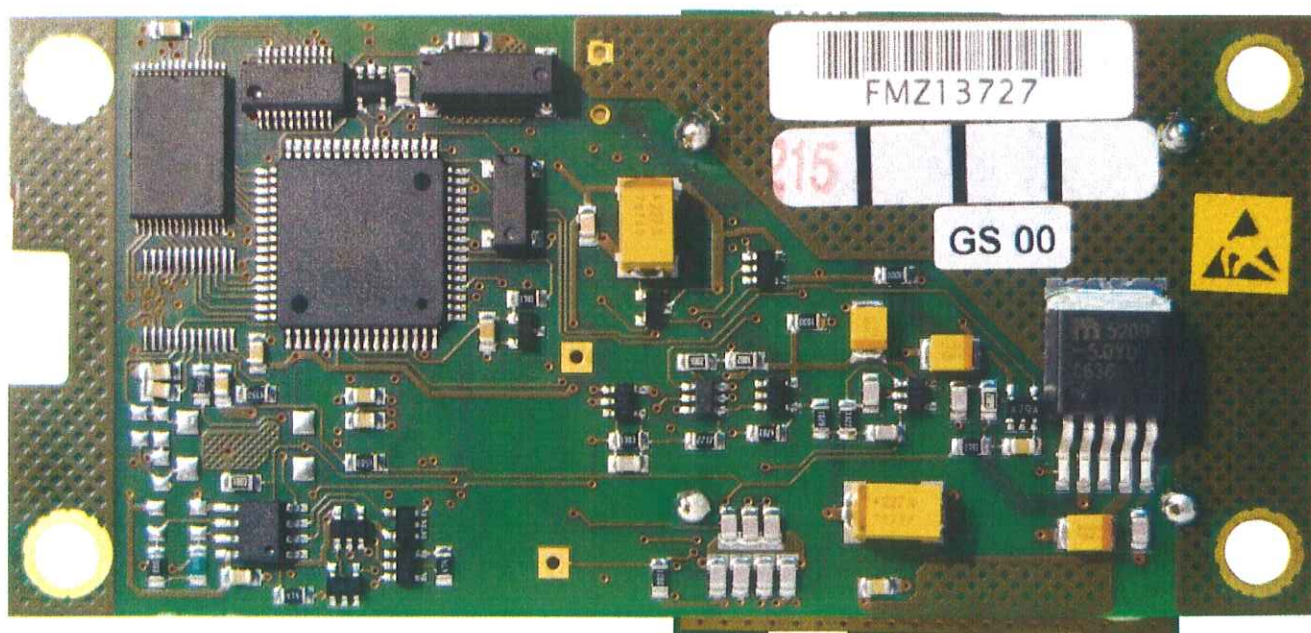
Department: FG

Test report reference:
M/FG-09/119

Page: 11 of 15

Date: 10.08.2009

checked by: M



Appendix 2 Photodocumentation

Description: A431 module general view

Division Medical Technology/
Communication Technology/
EMC

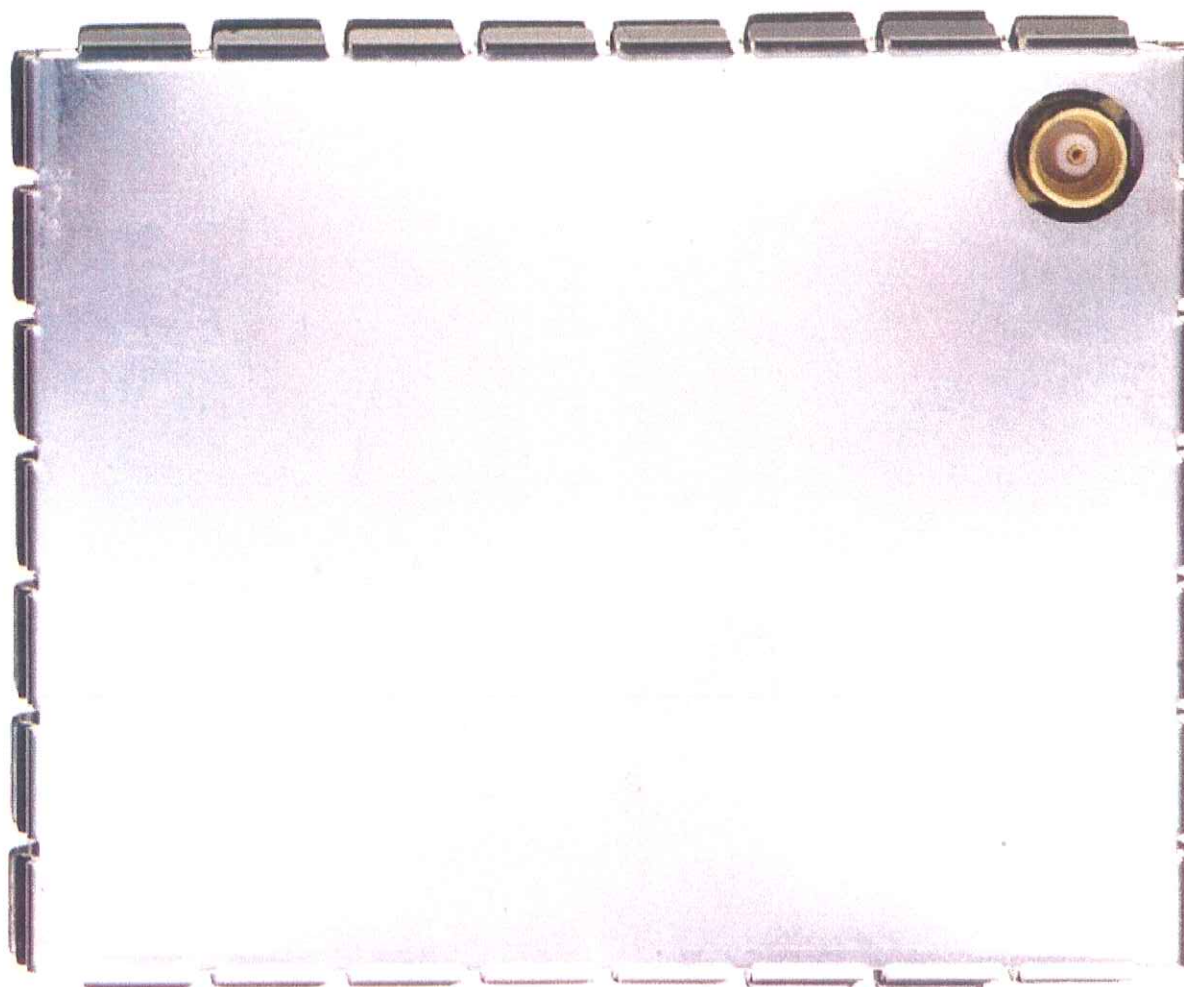
Department: FG

Test report reference:
M/FG-09/119

Page: 12 of 15

Date: 10.08.2009

checked by:



Appendix 2 Photodocumentation

Description: A431 module top view

Division Medical Technology/
Communication Technology/
EMC

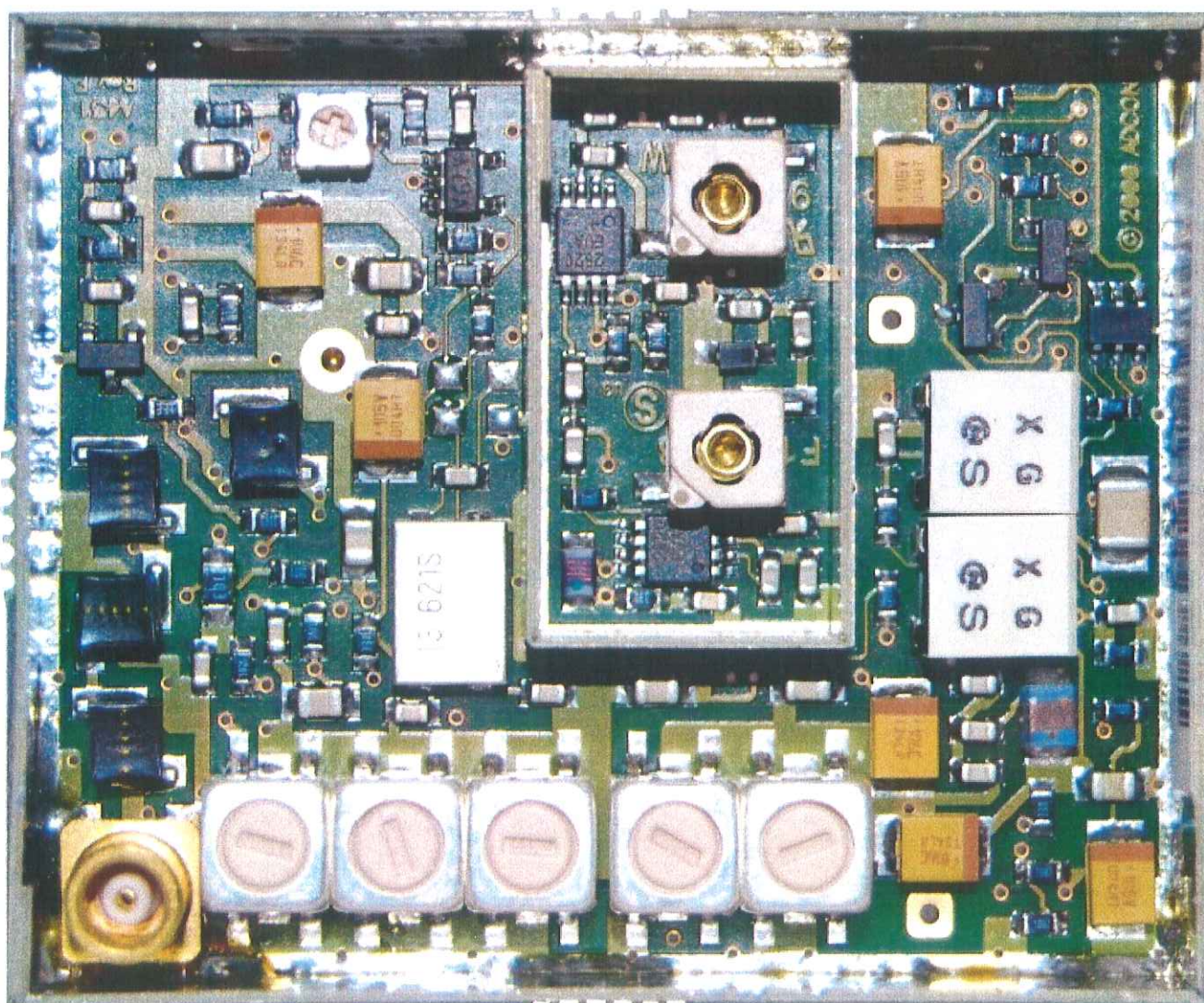
Department: FG

Test report reference:
M/FG-09/119

Page: 13 of 15

Date: 10.08.2009

checked by:



Appendix 2 Photodocumentation

Description: A431 modul bottom view

Division Medical Technology/
Communication Technology/
EMC

Department: FG

Test report reference:
M/FG-09/119

Page: 14 of 15

Date: 10.08.2009

checked by: M

