

BES005 Blue-Tooth Stereo HeadPhone + Stereo Adapter User Manual

Catalogue

1	Product Description.....	- 1 -
2	Package Content and Functions	- 1 -
2.1	Package Contents.....	- 1 -
2.2	Product specification	- 2 -
2.2.1	BES005 (Ear-hook Headphone)	- 2 -
2.2.2	BES008 (Transmitter)	- 2 -
2.2.3	BES010 (Transmitter)	- 3 -
2.2.4	BED009 (EDR Dongle)	- 3 -
2.3	BES005 Definition of Control Button and LED.....	- 4 -
2.4	BES008 Definition of Control Button and LED	- 7 -
2.5	BES010 Definition of Control Button and LED.....	- 8 -
2.6	Function of BES005 Blue-Tooth stereo headphone	- 9 -
2.6.1	Turn-on	- 9 -
2.6.2	Turn-off	- 9 -
2.6.3	Volume Control.	- 9 -
2.6.4	Forward/ Backward.....	- 9 -
3	Charging... ..	- 9 -
4	Music Listening	- 10 -
4.1	Connect with BES008 Blue-Tooth stereo transmitter	- 10 -
4.2	Connecting with BES010 Blue-Tooth transmitter	- 10 -
4.3	Connect with BED009	- 11 -
5	Connect with Blue-Tooth mobile phone	- 13 -
5.1	Paring stage	- 13 -
5.2	Answering a call.....	- 13 -
5.3	Ending a phone	- 13 -
5.4	Dialing.....	- 13 -
5.5	Transfer Call	- 13 -
5.6	Answering an incoming call during listening stereo music	- 13 -

1 Product Description

BES005: a Blue-Tooth ear-hook Stereo Headphone. It can receive stereo music via Blue-Tooth AV Dongle, BED009 regular dongle, or BES008/BES010 Blue-Tooth stereo Transmitter.

BES005 can also be used as a Blue-Tooth hands-free headset. You can use BES005 to answer an incoming call during listening music. If BES005 is connected with the regular dongle BED009, then it will become a wireless headset for a user to play Internet phone software like skype.

BES008 is a Blue-Tooth Dual-mode stereo transmitter; it can play iPod mini stereo music via Blue-Tooth technology.

BES010 is a Blue-Tooth stereo transmitter; it can play stereo music via Blue-Tooth technology.

2 Package Content and Functions

2.1 Package Contents

- BES005 Blue-Tooth Ear-hook Stereo Headphone
- 5V/1A Charger
- Mini USB 4 pin cable
- RCA to 3.5mm converter
- Spare Sponge
- Carrying case
- User manual

Option

- a. BES008 Blue-Tooth dual-mode stereo transmitter
- b. BES010 Blue-Tooth stereo transmitter
- c. BED009(EDR Dongle) or BED002(Regular Dongle)

2.2 Product specification

2.2.1 BES005 (Ear-hook Headphone)

Product Name	Blue-Tooth Ear-hook Stereo Headphone
Product ID	BES005
Blue-Tooth specification	Blue-Tooth 1.2 compliant
Qualification	FCC 、 CE
Support Profile	A2DP 、 AVRCP 、 Headset 、 Hands-free
Power class	Class 2
Battery	3.7V Lithium-Polymer battery Typical 250mAh
Charging time	At least 1.5 - 2 hrs
Playing time	Up to 5 hrs
Dimension	42.5mm x 37.9mm x 18.5mm
Weight	37.5g

2.2.2 BES008 (Transmitter)

Product Name	Blue-Tooth dual-mode stereo transmitter
Product ID	BES008
Blue-Tooth specification	Blue-Tooth 1.2 compliant
Qualification/list date	FCC 、 CE
Support Profile	A2DP
Power class	Class 2
Battery	3.7V Lithium-Polymer battery Typical 250mAh
Charging time	At least 1.5 - 2 hrs
Playing time	Up to 5
Dimension	52mm x 19mm x 37mm
Weight	16g

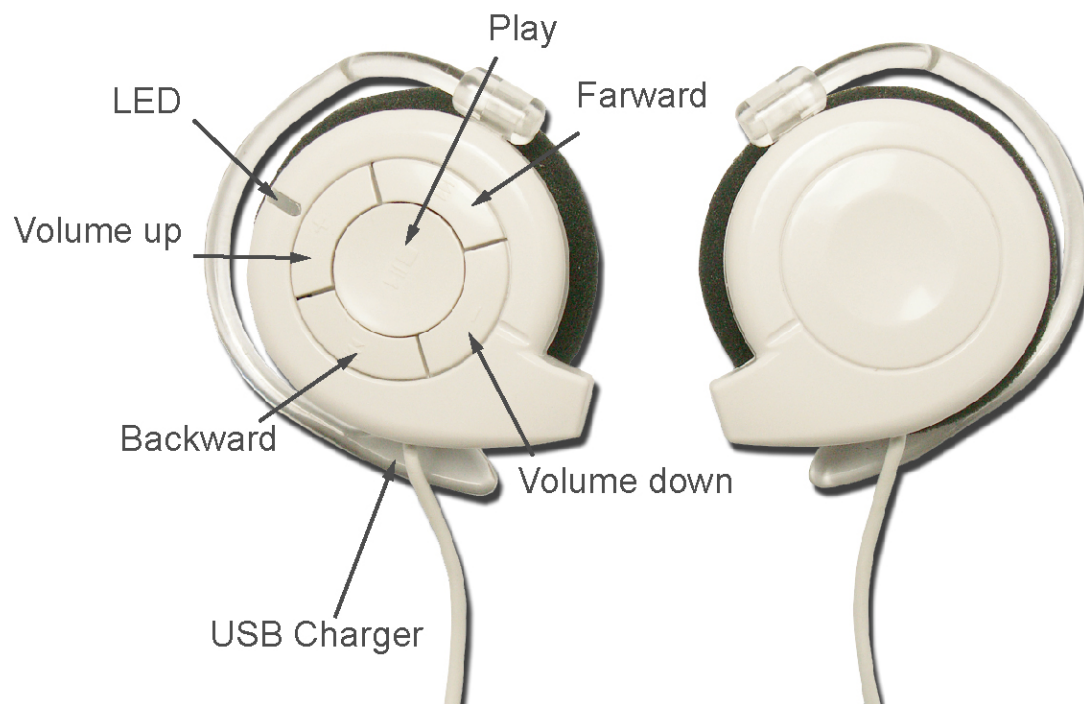
2.2.3 BES010 (Transmitter)

Product Name	Blue-Tooth stereo transmitter
Product ID	BES010
Blue-Tooth specification	Blue-Tooth 1.2 compliant
Qualification/list date	FCC 、 CE
Support Profile	A2DP
Power class	Class 2
Battery	3.7V Lithium-Polymer battery Typical 250mAh
Charging time	At least 1.5 - 2 hrs
Playing time	Up to 5 hrs
Dimension	40mm x 40mm x 15mm
Weight	20g

2.2.4 BED009 (EDR Dongle)

Product Name	EDR Dongle
Product ID	BED009
Blue-Tooth specification	Blue-Tooth EDR+2.0 compliant
Qualification/list date	FCC 、 CE
Support Profile	A2DP 、 AVRCP 、 SPP 、 HS 、 DUN 、 PAN 、 LAP 、 HID 、 OPP 、 FTP 、 FAX 、 SYNC 、 HCRP 、 BIP
Power class	Class 2

2.3 BES005 Definition of Control Button and LED



LED Definition	Description
Blue LED	Connecting : flash slowly Waiting for connecting : flash quickly Turn-on : quickly flash 3 times Paring mode : Blue LED and Red LED flash alternately
Red LED	Charging : always on Complete charging: become off Low voltage : quickly flash every 5 second Turn-off : quickly flash 3 times

Turn-on / Turn-off / Paring

Status Buttons	Off	On
Play/Pause Keep pressing for 3 second	Turn-on	X
Play/Pause Keep pressing for 7 second	Paring mode	X
Play/Pause Keep pressing for 6 second	X	Turn-off

Function of Stereo Headphone

Status Buttons	Music playing	
	Connect with Dongle	Connect with transmitter
Play/Pause Short press	Pause / Play	Mute / Un-mute
Volume Up Short press	Volume +	Volume -
Volume Down Short press	Volume -	Volume -
Forward Short press	Forward Track	X
Backward Short press	Backward Track	X
Volume Up/Down Long press	Reconnect	

Footnote:

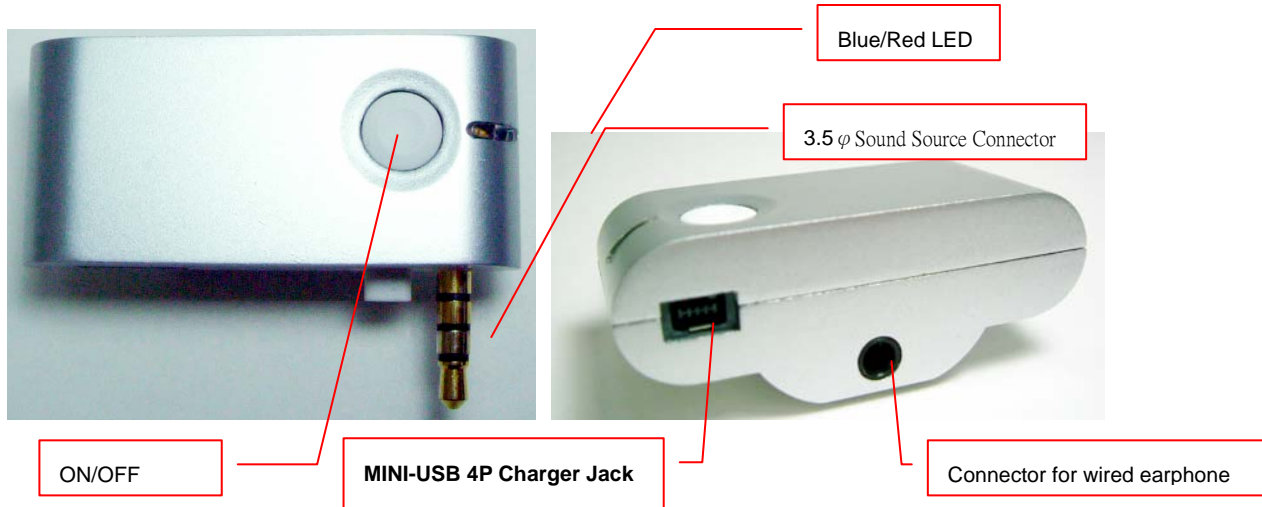
- 1) When BES005 is connected with BES008 or BES010, the Backward Track/Forward Track control button is invalid, because BES008 or BES010 is for transmitting sound signal only.
- 2) IVT BlueSoleil 1.6 supports Winamp5 and Microsoft Media Player 8(or later version).

Mono Headset Function

(The words in bold type mean that the function will only be implemented if the handset supports hands-free profile.)

Button \ Status	Stand by	Connecting	Incoming call	Communication	Outgoing call
Play/Pause Quickly press it once	Return back to the last connected headphone	X	Answering	Ending the call	Ending the call
Volume Up Short Press	X	Volume +	Volume +	Volume +	Volume +
Volume Up Long press 2 sec (Action for every second)	X	Last digit redialing	Reject incoming call	Transfer call	X
Volume Down Short Press	X	Volume -	Volume -	Volume -	Volume -
Volume Down Long press 2 sec (Action for every second)	X	Voice Dial	Reject incoming call	Transfer call	Volume -

2.4 BES008 Definition of Control Button and LED



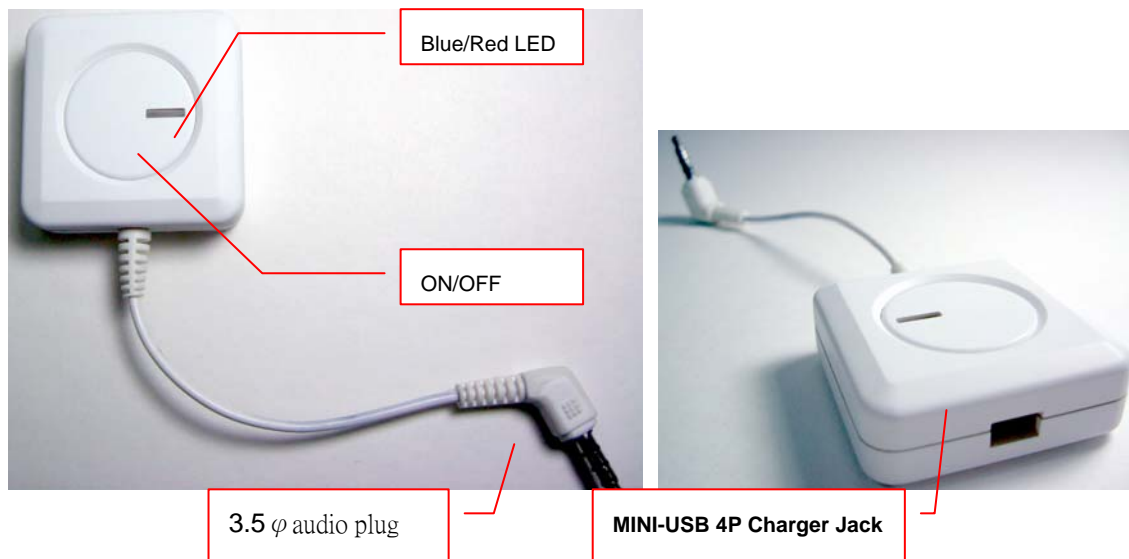
Turn-on / Turn-off / Paring

Status Button	Off	On
Play/Pause Keep pressing for 3 second	Turn-on	X
Play/Pause Keep pressing for 7 second	Paring mode	X
Play/Pause Keep pressing for 6 second	X	Turn-off

Footnote: If you are the first time to connect BES008 with BES005, you have to pair BES008 and BES005 in order for BES008 to automatically connect with BES005 under turn-on status.

LED Definition	Description
Blue LED	Connecting : flash slowly Waiting for connecting : flash quickly Turn-on : quickly flash 3 times Paring mode : Blue LED and Red LED flash alternately
Red LED	Charging : always on Complete charging: become off Low voltage : quickly flash every 5 second Turn-off : quickly flash 3 times

2.5 BES010 Definition of Control Button and LED



Turn-on / Turn-off / Paring

Status Button	Off	On
Play/Pause Keep pressing for 3 second	Turn-on	X
Play/Pause Keep pressing for 7 second	Paring mode	X
Play/Pause Keep pressing for 6 second	X	Turn-off

Footnote: If you are the first time to connect BES010 with BES005, you have to pair BES010 and BES005 in order for BES010 to automatically connect with BES005 under turn-on status.

LED Definition	Description
Blue LED	Connecting : Quickly flash Waiting for connecting : flash slowly Turn-on hint: Quickly flash 3 times Paring mode : Blue LED and Red LED flash alternately
Red LED	Charging : always on Complete charging: become off Low voltage : quickly flash every 5 second Turn-off : quickly flash 3 times

2.6 Function of BES005 Blue-Tooth stereo headphone

2.6.1 Turn-on

1. Keep pressing Play/Pause button for 3 second until Blue LED quickly flash 3 times
2. When it is connected with any Blue-Tooth device (including Blue-Tooth stereo transmitter such as BES008, BES010, BED009, a Dongle or Blue-Tooth mobile phone), Blue LED flashing becomes slowly.

2.6.2 Turn-off

Keep pressing Play/Pause button for 6 seconds, then Red LED will become off after quickly flashing 3 times.

2.6.3 Volume Control.

1. One click on Volume Up button will increase a step of volume
2. One click on Volume Down button will decrease a step of volume

2.6.4 Forward/ Backward

When BES005 is connected with a regular dongle under IVT BlueSoleil environment, you can use the Forward/ Backward button to select the desire music.

3 Charging

There is a rechargeable lithium-Polymer battery inside BES005 and BES008 and BES010. The battery in the product that you just take out from the box is not fully charged. Therefore, please use the charger came with the product to charge the battery before playing BES005, BES008 or BES010 at the first time.

Matters needing attention during charging:

1. It will take two hours to complete charging process.
2. Red LED is always on during charging.
3. Red LED will become off when the charging process is completed.
4. BES005, BES008 or BES010 will be instantly reset when you plug the charger into BES005, BES008 or BES010. You can use this manner to reset the product and restart it if you find the product is under abnormal status.
5. If you want to charge by computer connect your BES005, BES008 or BES010 to a high-powered USB 2.0 port or extra-powered USB 2.0 HUB using the USB charger cord that came with package. High-powered USB ports are typically found on the computer itself (not on your keyboard or other peripherals which is low-powered).

Footnote:

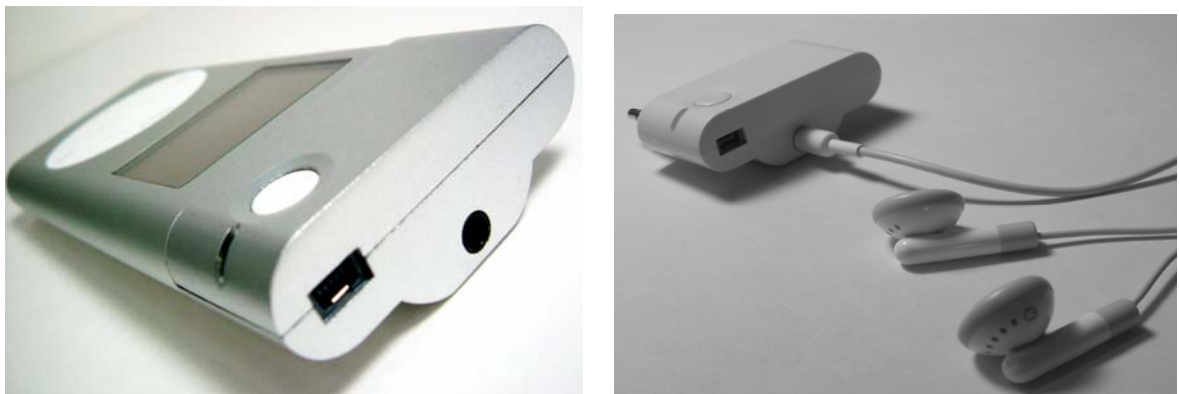
BES005: If you hear a beep every 20 seconds during the device used, it means the battery is under the low voltage status. Please charge it immediately! Otherwise it will turn off automatically!

BES008 or BES010: If Red LED is flashing, it means the battery is under the low voltage status. Please charge it immediately! Otherwise it will turn off automatically!

4 Music Listening

4.1 Connect with BES008 Blue-Tooth stereo transmitter

1. Connect BES008 adapter to the jack of iPod mini.
2. Turn on BES008 and ensure that the music is been playing
3. To turn on BES005 and wait for the flash speed of Blue LED become slow, then it means that BES008 has been connected successfully.
4. You should hear the music been playing by iPod mini from BES005
5. You can adjust volume by using Volume Up/Down control button.
6. When you use the BES005 to connect with BES008 via Blue-Tooth wireless technology to enjoy the music. You also can plug in the wired earphone to share the music form iPod mini at the same time.



Footnote:

If you are the first time to connect BES008 with BES005, you have to pair BES008 and BES005 in order for BES008 to automatically connect with BES005 under turn-on status.

4.2 Connecting with BES010 Blue-Tooth transmitter

1. Plug BES010 audio plug into the audio jack of MP3 player or any kinds of audio source.



2. Turn on BES010 and ensure that the MP3 or any kinds of audio source.

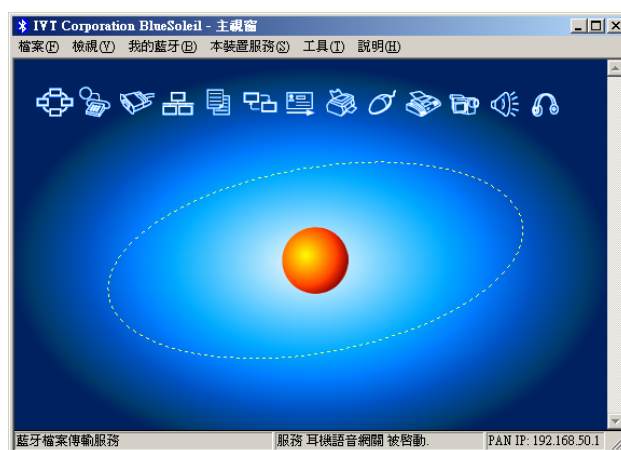
3. Turn on BES005 and wait for the speed of the blue LED become slow, then it is successful to connect with BES008.
4. Now, you should be able to listen to music from MP3 or any kinds of audio source.
5. Using the Volume Up/Down control button of BES005 to adjust the volume.

Footnote:

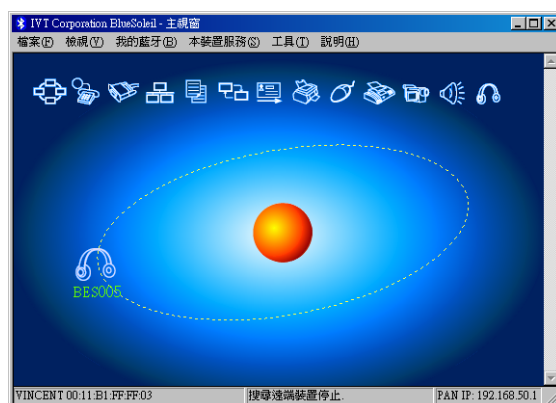
You have to pair BES010 and BES005 if your are the first time to connect BES010 with BES005, then BES010 will search and connect with BES005 under standby status.

4.3 Connect with BED009

1. Install the Blue-Tooth software comes with BED0009.
2. Plug BED009 into the USB slot of PC.
3. BlueSoleil main page will appear if you double-click the Blue-Tooth symbol of BlueSoleil on the bottom of the right hand side.



4. Under off-mode, press Play/Pause button on BES005 for 5 seconds, then it will enter to the Paring mode.
5. Press F5, then BlueSoleil will detect Blue-Tooth devices around BES0009.
6. Once BES005 is detected, then it will display on BlueSoleil (as the figure below).



7. Double-click BES005 to implement pairing, then BlueSoleil will display the Blue-Tooth service provided by BES005 after the pairing code "0000" inputted. (as figure A and B)

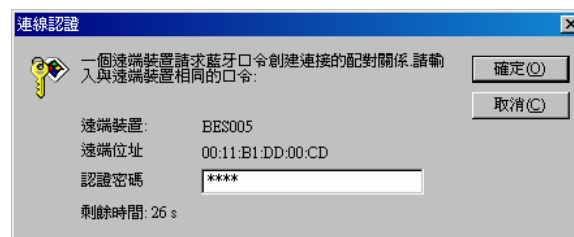


Figure A

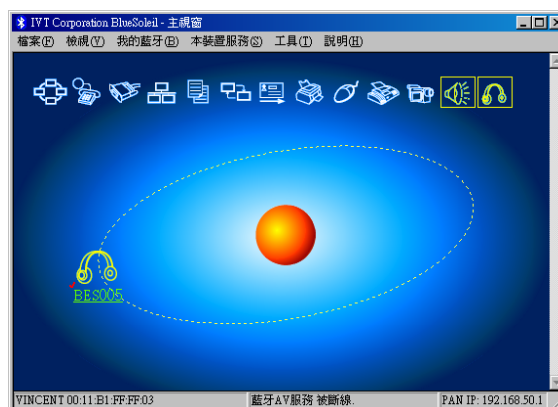
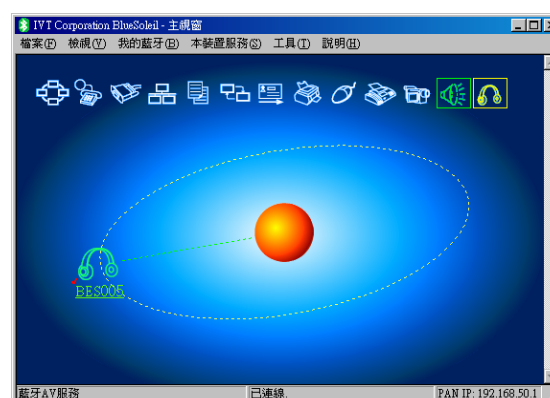


Figure B

8. Make a connection between BED0009 and BES005 by clicking "Blue-Tooth AV service" on the top of the right corner (Speaker sign as the figure below)



9. Next, run the multi-media playback software from the computer (like Winamp), then enjoy the music stream with wireless technology!!!
10. You may control the volume by using the Volume Up/Down control button from BES005 or select the desire music by using the Backward/ Forward button.

5 Connect with Blue-Tooth mobile phone

5.1 Paring stage

1. First, activate the Blue-Tooth function of the mobile phone.
2. Select Hands-Free mode and search.
3. Once BES005 is detected, please input “0000” when your Blue-Tooth mobile phone ask you for entering pin code.

5.2 Answering a call

1. You will hear the phone ringing when there is a call coming .
2. Press Play/Pause button to answer the incoming call or press Play/Pause button for 2 seconds to reject it.

5.3 Ending a phone

End up the call by just pressing Play/Pause button once.

5.4 Dialing

1. Using the mobile phone for dialing: Normally use your Blue-Tooth mobile phone to dial, then use BES005 as a hands-free device
2. Using the voice dial function of BES005: If BES005 is under standby status, then you can use the voice dial by press Volume Down button for 2 seconds.
3. Using last number redial function of BES005: If BES005 is under standby status, the last number redial will be performed by Volume Up button for 2 seconds.

5.5 Transfer Call

Pressing any Volume button for 2 seconds will switch the communication to mobile phone. Pressing any Volume button for 2 seconds again, the communication will be switched back to the headphone.

5.6 Answering an incoming call during listening stereo music

1. Connect your Blue-Tooth mobile phone with BES005 before connecting with BES008, BES010 or BED009.
2. When there is an incoming call during listening stereo music, BES005 will automatically mute the music and send out the ring tone. You are able to answer the phone by just pressing Play/Pause button. BES005 will automatically play stereo music again after ending up the call.

Footnote:

If you want to enjoy the function of Last number redial, Voice dial and Transfer call, your mobile phone must support Hands-Free profile.

Federal Communications Commission (FCC) Statement

15.21

You are cautioned that changes or modifications not expressly approved by the part responsible for compliance could void the user's authority to operate the equipment.

15.105(b)

This equipment has been tested and found to comply with the limits for a Class B digital device, pursuant to part 15 of the FCC rules. These limits are designed to provide reasonable protection against harmful interference in a residential installation. This equipment generates, uses and can radiate radio frequency energy and, if not installed and used in accordance with the instructions, may cause harmful interference to radio communications. However, there is no guarantee that interference will not occur in a particular installation. If this equipment does cause harmful interference to radio or television reception, which can be determined by turning the equipment off and on, the user is encouraged to try to correct the interference by one or more of the following measures:

- Reorient or relocate the receiving antenna.
- Increase the separation between the equipment and receiver.
- Connect the equipment into an outlet on a circuit different from that to which the receiver is connected.
- Consult the dealer or an experienced radio/TV technician for help.

Operation is subject to the following two conditions:

- 1) this device may not cause interference and
- 2) this device must accept any interference, including interference that may cause undesired operation of the device.

FCC RF Radiation Exposure Statement:

This equipment complies with FCC radiation exposure limits set forth for an uncontrolled environment. End users must follow the specific operating instructions for satisfying RF exposure compliance. This transmitter must not be co-located or operating in conjunction with any other antenna or transmitter.