

Photo 1: Interior photo of EUT (WL901)



Photo 2: Interior photo of EUT (WL901)

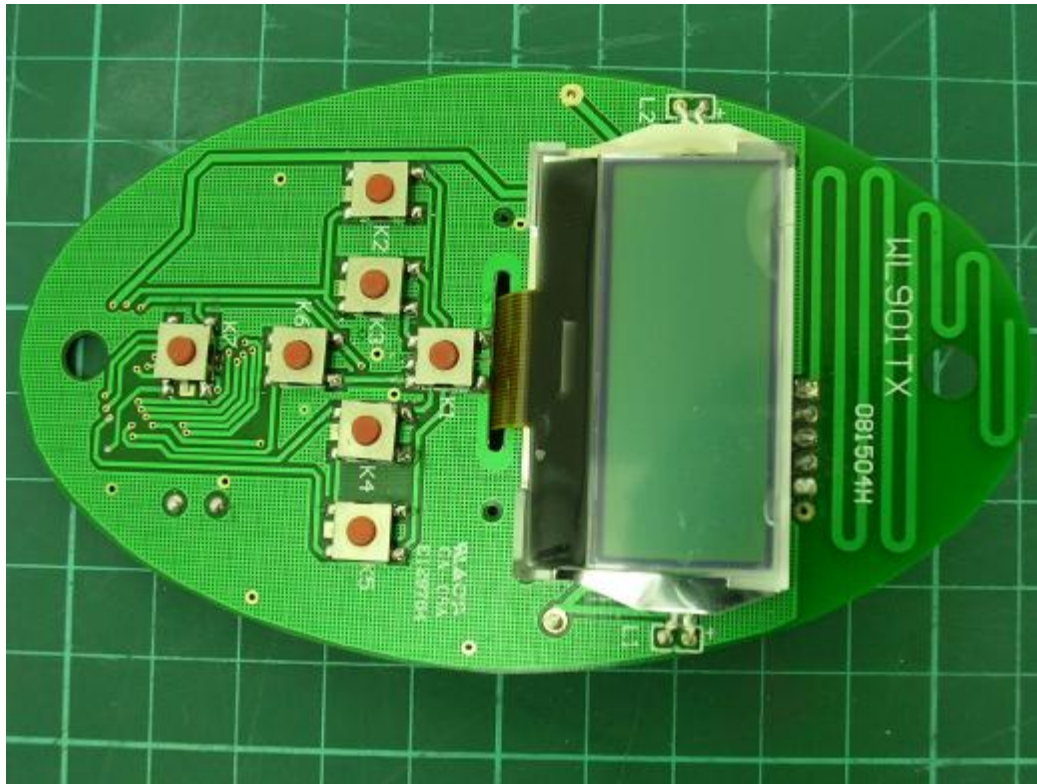


Photo 4: Interior photo of EUT (WL901)

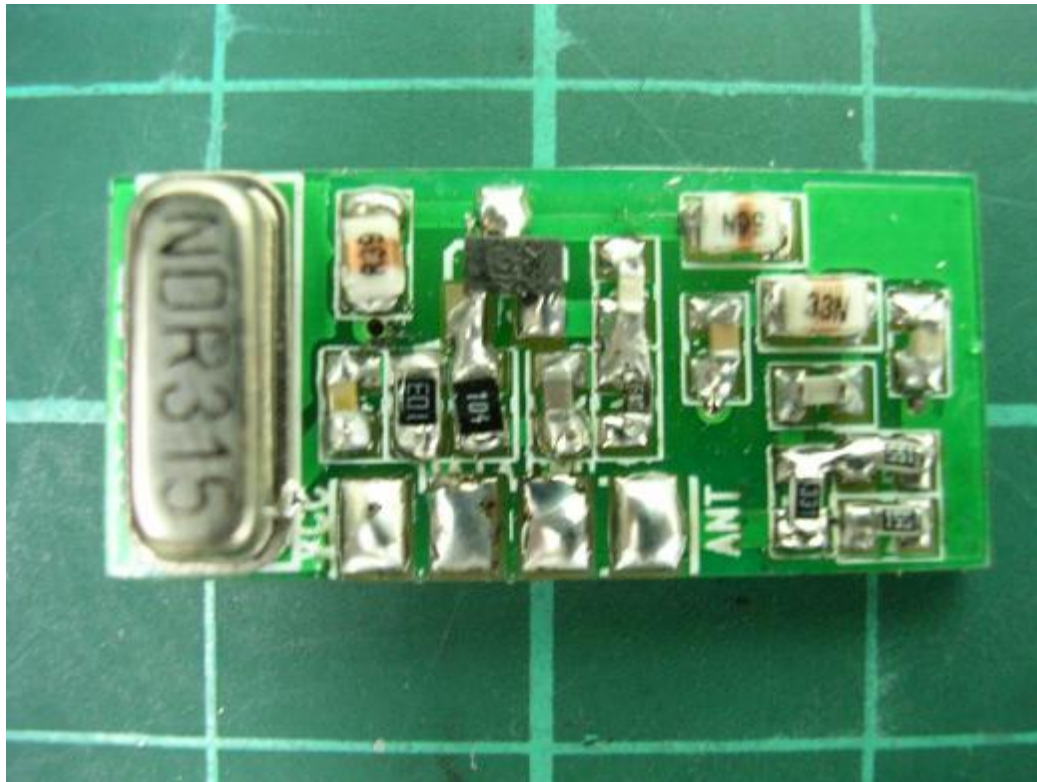


Photo 5: Interior photo of EUT (WL902)



A photograph showing the internal components of a custom electronic device housed in a yellow plastic enclosure. The device features a green printed circuit board (PCB) populated with various electronic components. Key components include a large red electrolytic capacitor, a silver cylindrical component (possibly a microphone or sensor), a black integrated circuit (IC) labeled 'HIMARK 40231.1', and a small silver component labeled 'ND 40231.1'. The PCB is connected to a power source via a green cable and a white connector on the left. A black cable is also connected to the right side of the PCB. The device is resting on a green grid surface.



Photo 7: Interior photo of EUT (WL902)

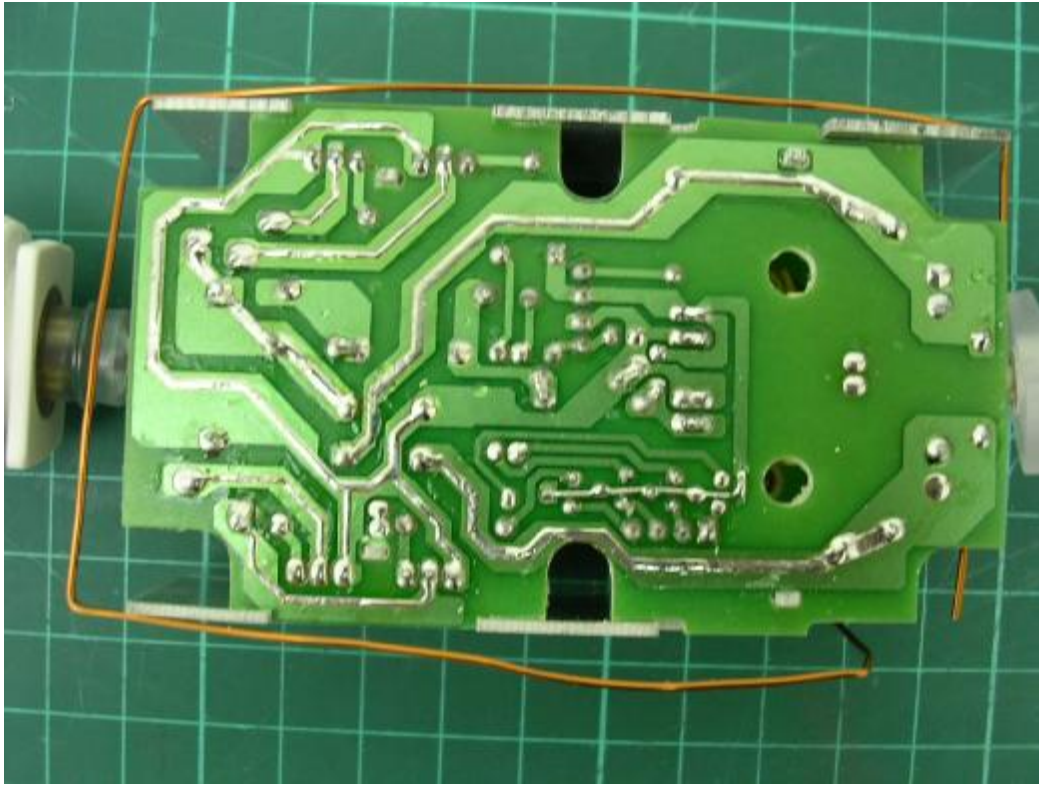


Photo 8: Interior photo of EUT (WL902)

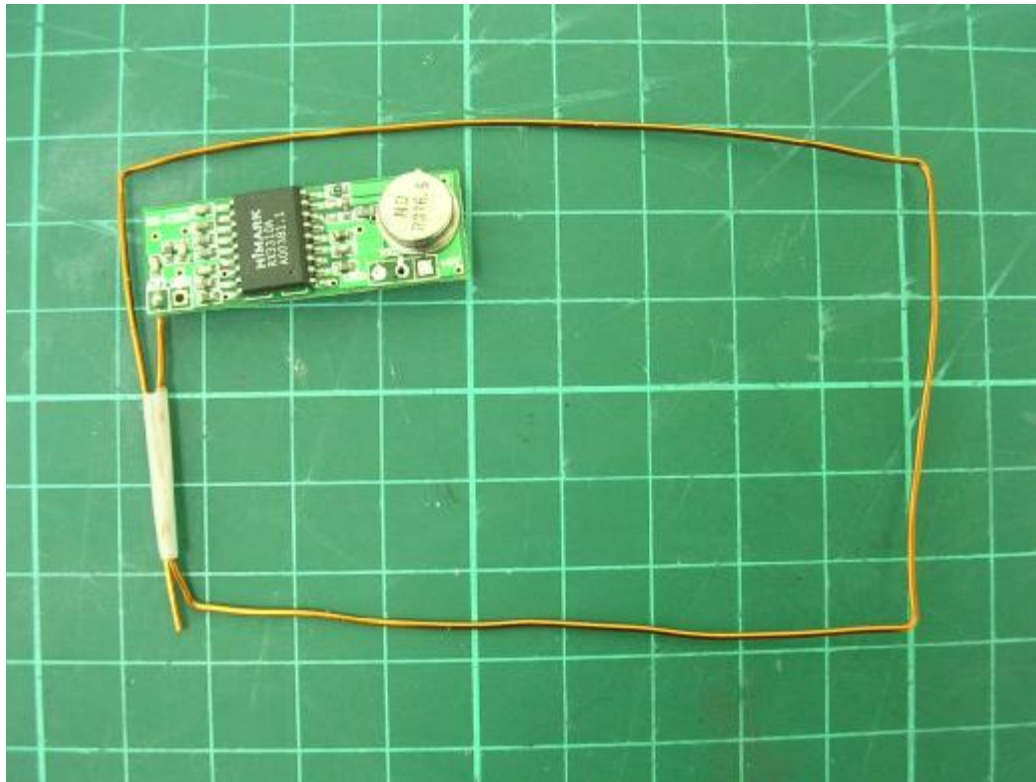


Photo 9: Interior photo of EUT (WL902)

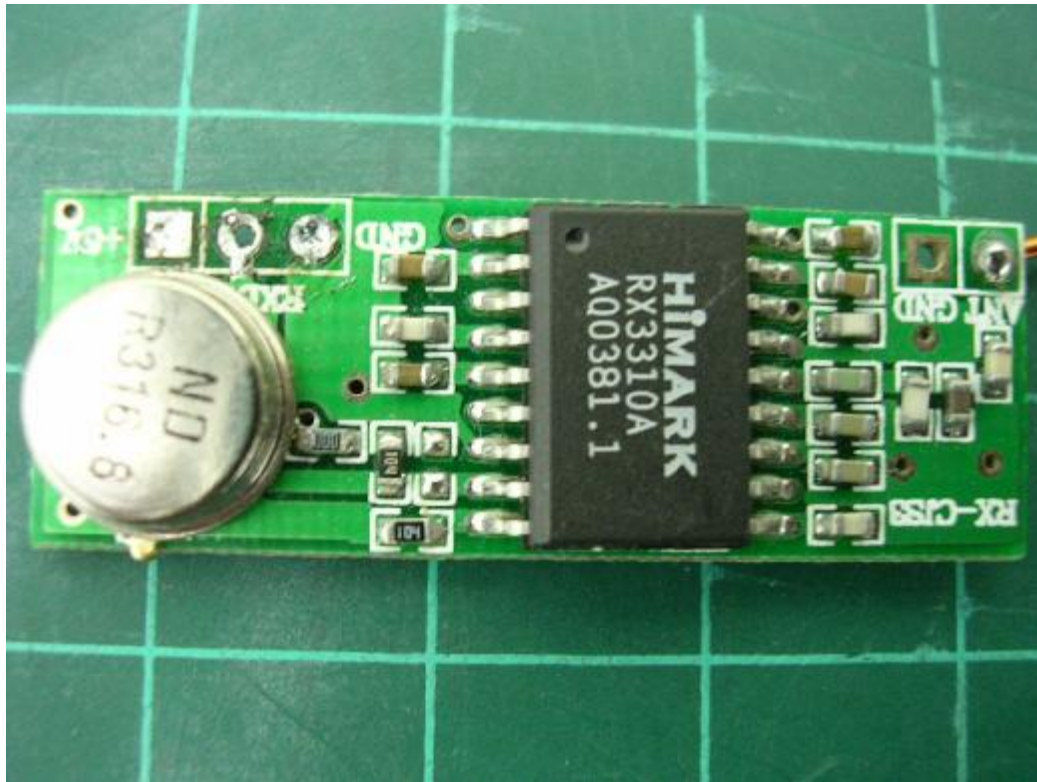


Photo 10: Interior photo of EUT (WL902)

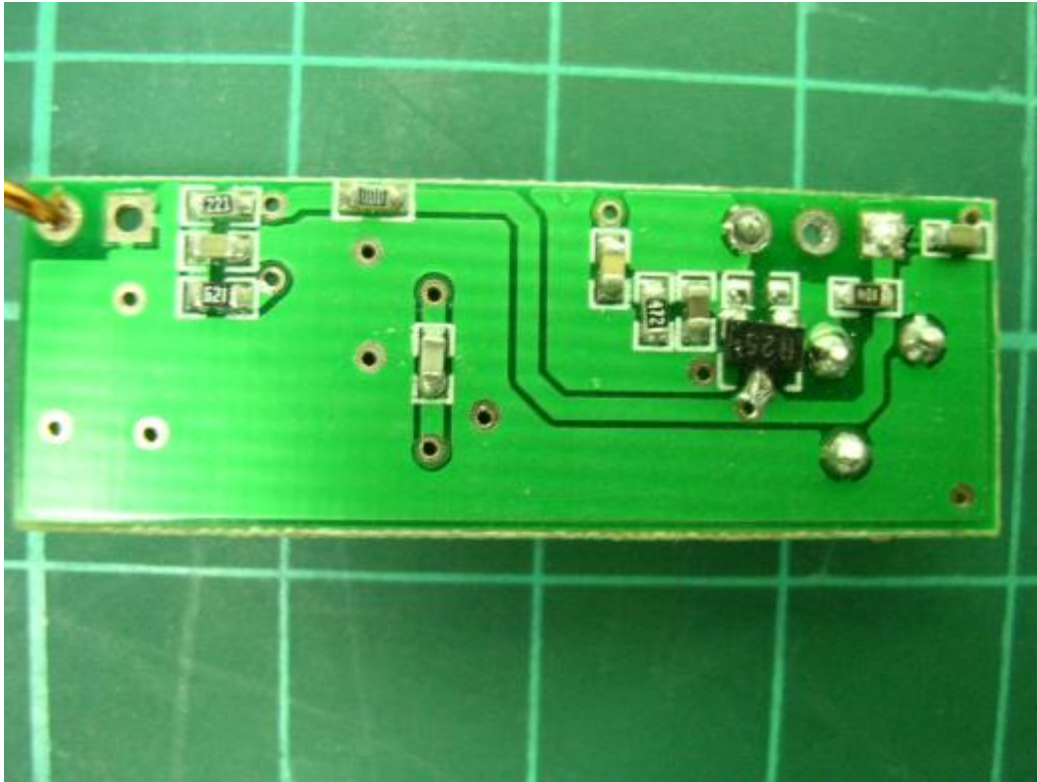


Photo 11: Interior photo of EUT (WL902)

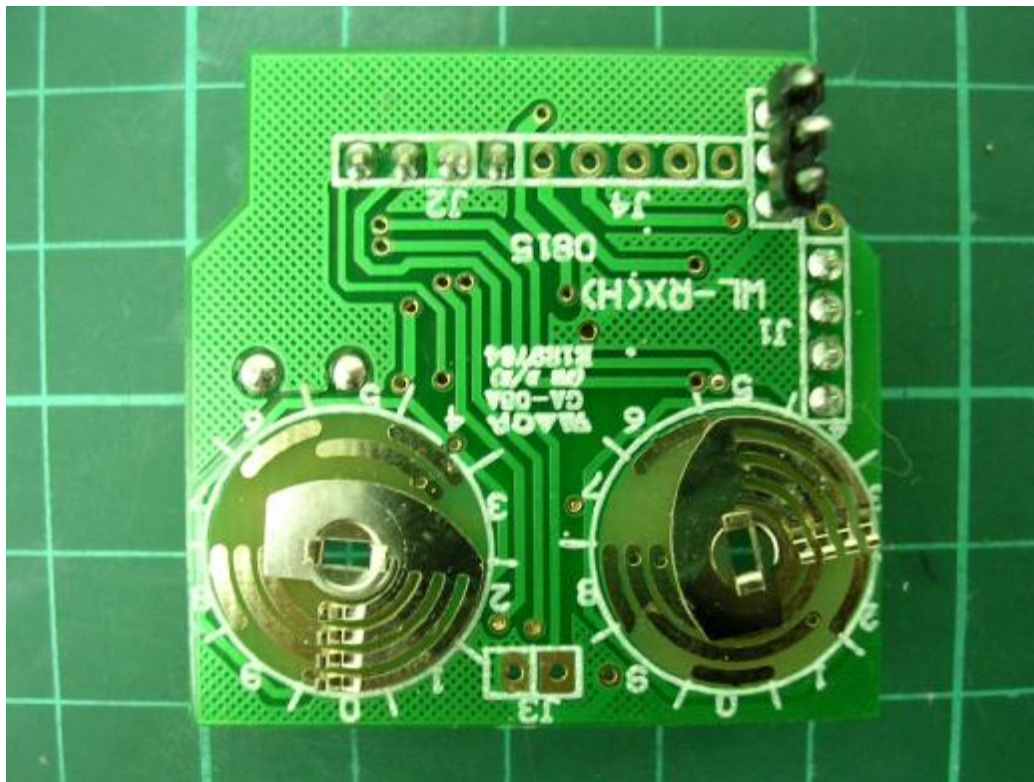
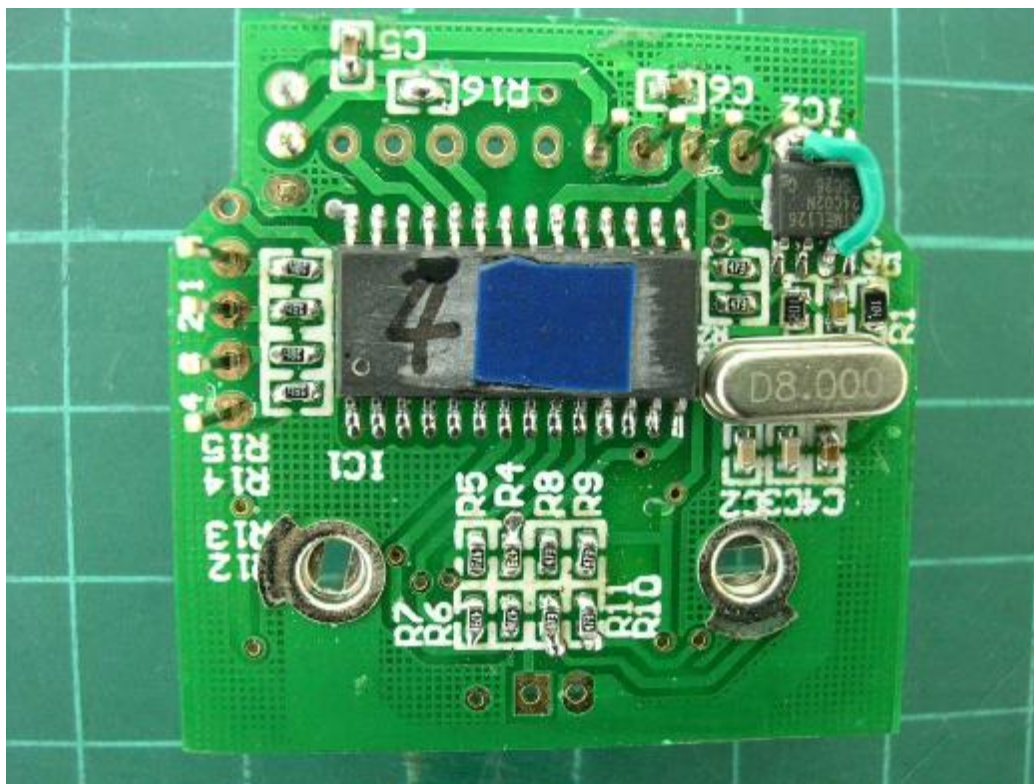


Photo 12: Interior photo of EUT (WL902)



A photograph of the internal components of a power supply unit, showing a yellow PCB with various electronic components including a transformer, capacitors, and diodes, mounted on a green background.

Photo 14: Interior photo of EUT (WL902)

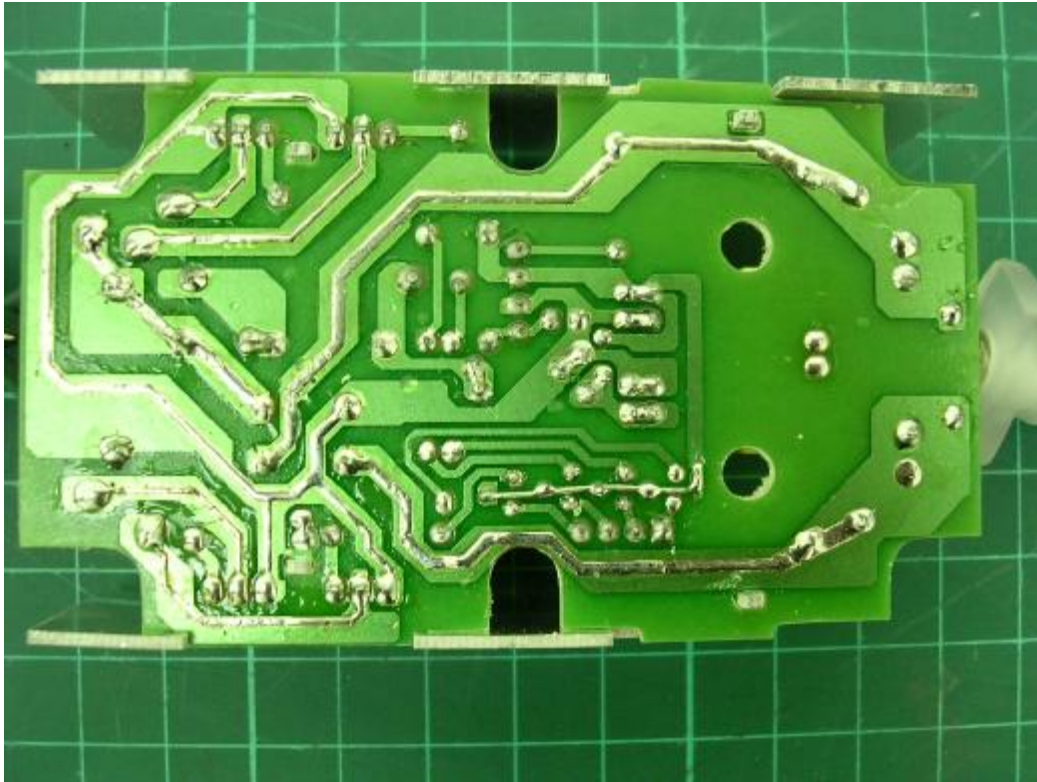


Photo 15: Interior photo of EUT (WL905)



Photo 16: Interior photo of EUT (WL905)

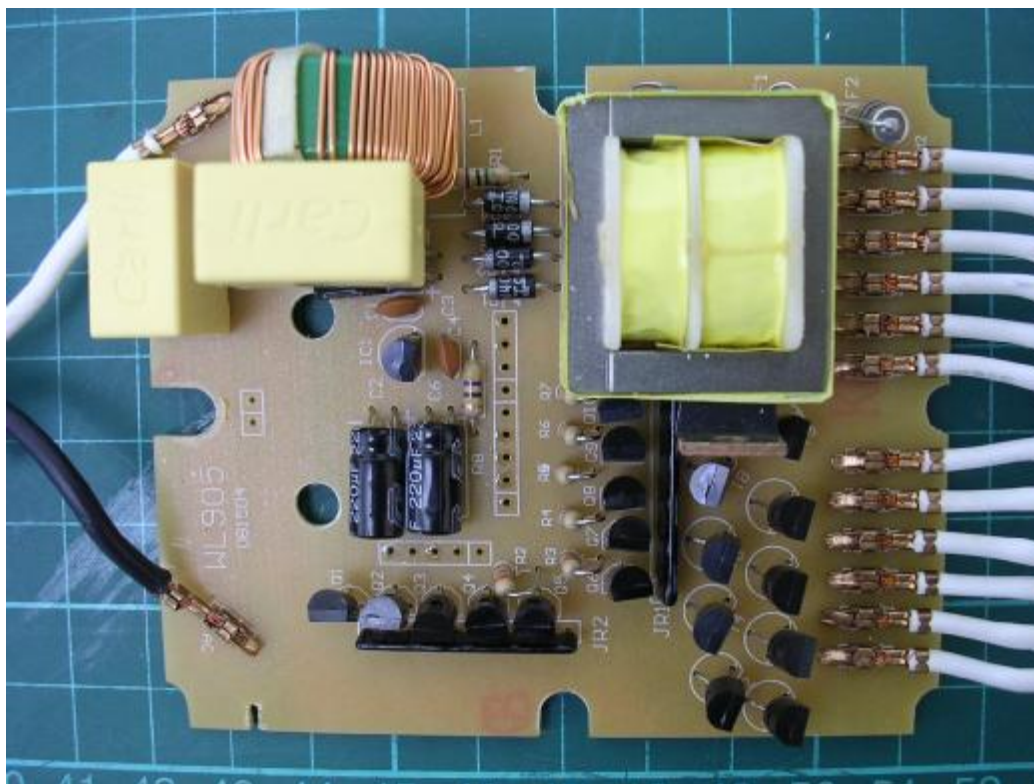


Photo 17: Interior photo of EUT (WL905)

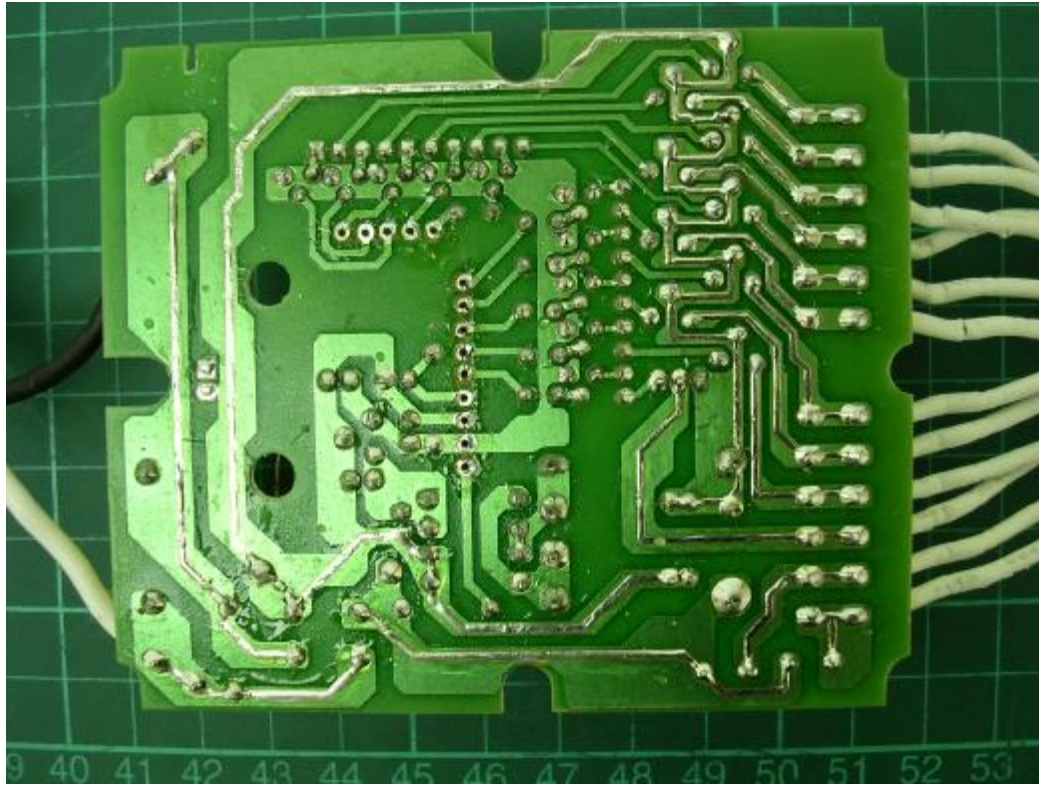


Photo 18: Interior photo of EUT (WL905)

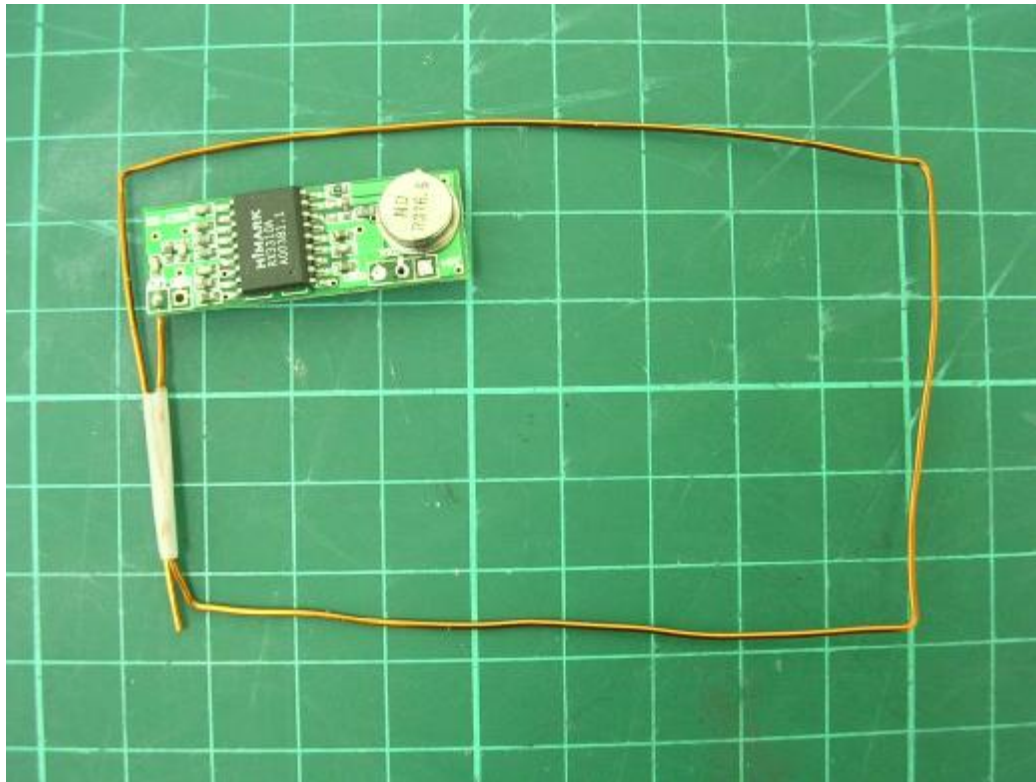


Photo 19: Interior photo of EUT (WL905)

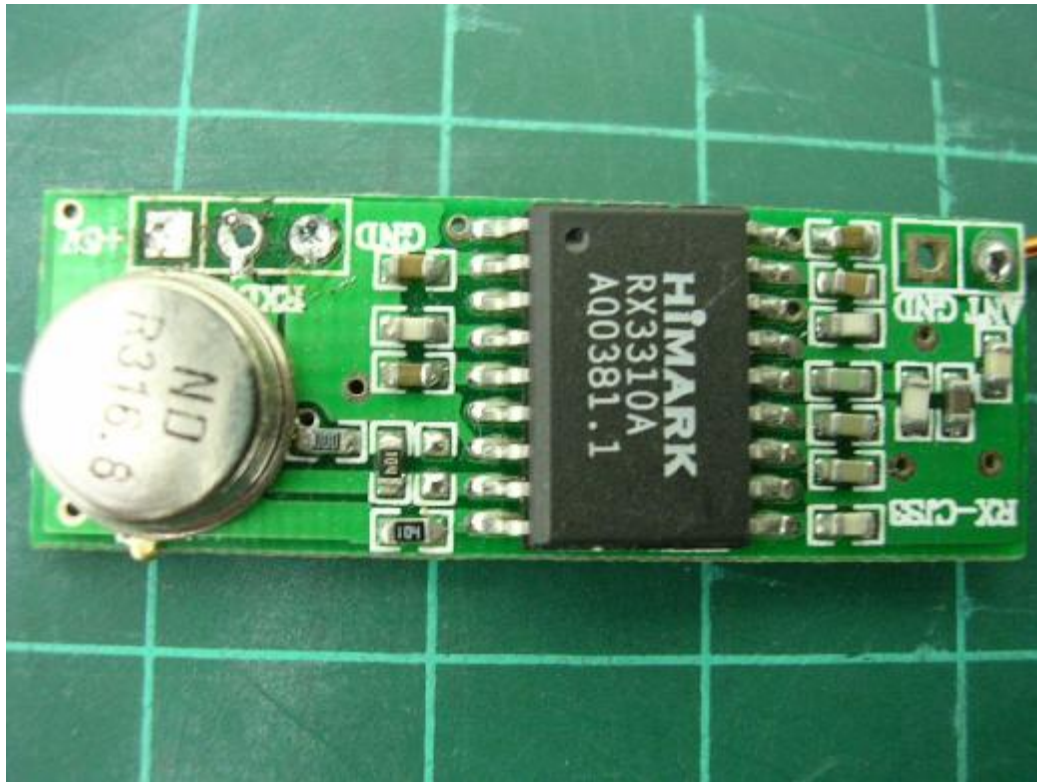


Photo 20: Interior photo of EUT (WL905)

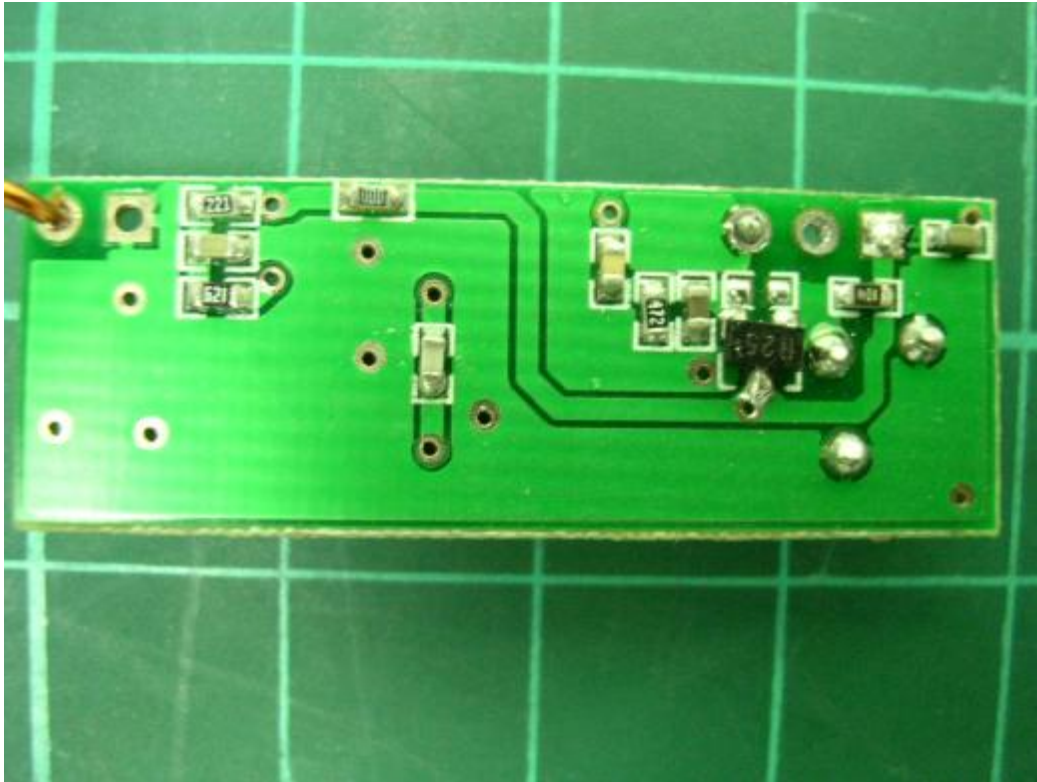


Photo 21: Interior photo of EUT (WL905)

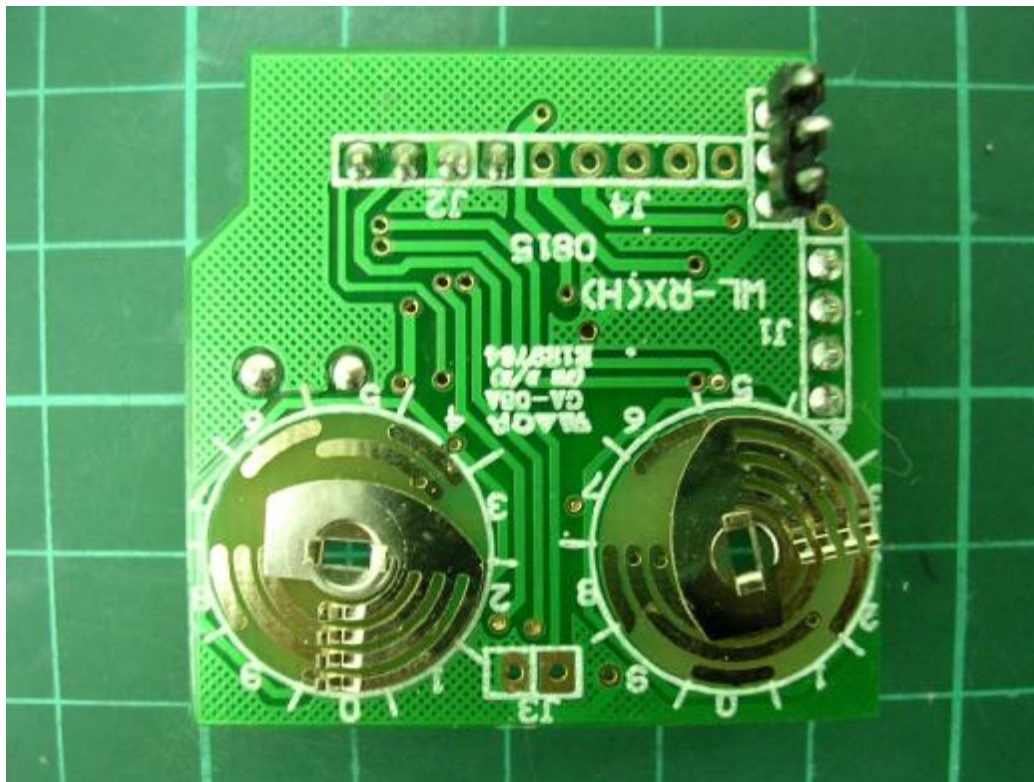


Photo 22: Interior photo of EUT (WL905)

