

FCC Part 15 Certification **Test Report**

FCC ID: SH5-CAP

FCC Rule Part: 15.247 Spread Spectrum Devices
15.407 U-NII Devices

ACS Report Number: 04-0273-15C

Manufacturer: Miltope Corporation
Equipment Type: Wireless LAN System
Model: CAP

Label Information

FCC Label

REVISIONS					
ZONE	REV	DESCRIPTION	ECN	DATE	APPROVED
-	1	PRELIMINARY RELEASE	-	04/09/27	DK

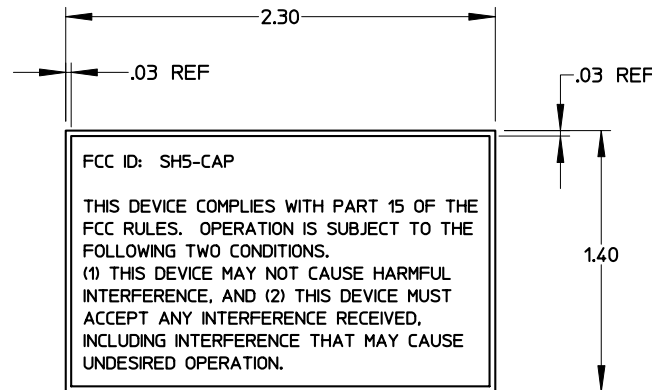
NOTES : UNLESS OTHERWISE SPECIFIED

1. IDENTIFY AS 54418/713886 AND THE REVISION TO WHICH MANUFACTURED. TAG OR BAG.

2. MATERIAL:
LABEL CONSISTING OF FLEXCON 2.0 MIL SILVER METALIZED POLYESTER FILM COATED WITH V-156 ACRYLIC PRESSURE SENSITIVE ADHESIVE, LAMINATED WITH 1.0 MIL CLEAR MATTE FINISH AND V-22 ACRYLIC ADHESIVE.

3. FINISH:
BACKGROUND TO BE SILVER MATTE. CHARACTERS AND BORDER LINES TO BE BLACK PER FED-STD-595 COLOR NUMBER 17038

3. LETTERS TO BE GOTHIC OR FUTURA CAPITOLS (SAN-SERIFS) .06 HIGH AS SHOWN.



COMPUTER GENERATED DRAWING

SOLID MODEL REV X		SOLID MODEL FILE NO. XXXXXX-100		901164		UNLESS OTHERWISE SPECIFIED: - INTERPRET DRAWING PER MIL-T-31000 - INTERPRET DIMENSIONS AND TOLERANCES PER ASME Y14.5 - WORKMANSHIP PER MIL-HDBK-454. GUIDELINE 9 - DIMENSIONS ARE IN INCHES - TOLERANCES: DECIMALS: .XX ± .01 ANGULAR: ±1/2° XXX ± .005 - REMOVE BURRS AND BREAK SHARP EDGES .02 MAX - STANDARD MACHINE FINISH - DO NOT SCALE DRAWING		DRAWN D. KENNY 04/09/27		NAME D. KENNY 04/09/27		DATE 04/09/27	
CADFILE#		DTC_713886-000_A_SH11		NEXT ASSY		MATERIAL		CHECKED J.F. 04/09/27		DESIGN D.K. 04/09/27		ENGINEER J.F. 04/09/27	
APPLICATION		FINISH		3		THIS DOCUMENT AND THE INFORMATION CONTAINED HEREIN ARE THE PROPERTY OF MILTOPE CORPORATION. COPIES ARE ISSUED ON STRICT CONFIDENCE AND SHALL NOT BE REPRODUCED, COPIED OR USED AS BASIS FOR MANUFACTURE WITHOUT WRITTEN PERMISSION		QUAL CONT R.B. 04/09/27		CUSTOMER APPVL		CONTRACT NO.	
VT Miltope		3800 Richardson Road South Hope Hall, Alabama 36043		FCC LABEL, CAP/WAB		SIZE C		CAGE CODE 54418		DRAWING NO 713886		REV 1	
SCALE: 2/1		SHEET 1 OF 1											

Industry Canada Label

REVISIONS					
ZONE	REV	DESCRIPTION	ECN	DATE	APPROVED
-	1	PRELIMINARY RELEASE	-	04/09/27	DK

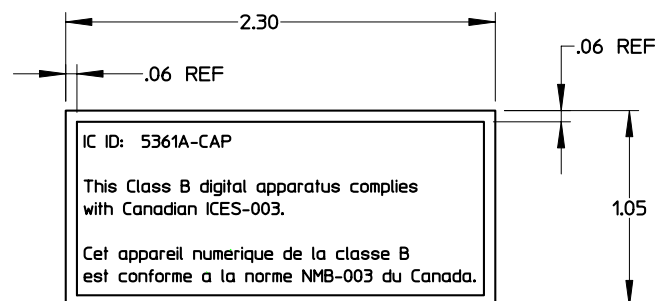
NOTES : UNLESS OTHERWISE SPECIFIED

1. IDENTIFY AS 54418/713888 AND THE REVISION TO WHICH MANUFACTURED. TAG OR BAG.

2. MATERIAL:
LABEL CONSISTING OF FLEXCON 2.0 MIL SILVER METALIZED POLYESTER FILM COATED WITH V-156 ACRYLIC PRESSURE SENSITIVE ADHESIVE, LAMINATED WITH 1.0 MIL CLEAR MATTE FINISH AND V-22 ACRYLIC ADHESIVE.

3. FINISH:
BACKGROUND TO BE SILVER MATTE. CHARACTERS TO BE BLACK PER FED-STD-595 COLOR NUMBER 17038. BORDER LINES TO BE SAME THICKNESS AS THE CHARACTERS AND THE SAME COLOR.

4. LETTERS TO BE GOTHIC OR FUTURA CAPITOLS (SAN-SERIFS) .06 HIGH AS SHOWN.



COMPUTER GENERATED DRAWING

SOLID MODEL REV X		SOLID MODEL FILE NO. XXXXXX-100		901164		UNLESS OTHERWISE SPECIFIED: - INTERPRET DRAWING PER MIL-T-31000 - INTERPRET DIMENSIONS AND TOLERANCES PER ASME Y14.5 - WORKMANSHIP PER MIL-HDBK-454. GUIDELINE 9 - DIMENSIONS ARE IN INCHES - TOLERANCES: DECIMALS: .XX ± .01 ANGULAR: ±1/2° XXX ± .005 - REMOVE BURRS AND BREAK SHARP EDGES .02 MAX - STANDARD MACHINE FINISH - DO NOT SCALE DRAWING		DRAWN D. KENNY 04/09/27		NAME D. KENNY 04/09/27		DATE 04/09/27	
CADFILE#		DTC_713888-000_A_SH11		NEXT ASSY		MATERIAL		CHECKED J.F. 04/09/27		DESIGN D.K. 04/09/27		ENGINEER J.F. 04/09/27	
						FINISH		QUAL CONT R.B. 04/09/27		CUSTOMER APPVL		CONTRACT NO.	
								THIS DOCUMENT AND THE INFORMATION CONTAINED HEREIN ARE THE PROPERTY OF MILTOPE CORPORATION. COPIES ARE ISSUED ON STRICT CONFIDENCE AND SHALL NOT BE REPRODUCED, COPIED OR USED AS BASIS FOR MANUFACTURE WITHOUT WRITTEN PERMISSION		SIZE C		CAGE CODE 54418	
										DRAWING NO 713888		REV 1	
										SCALE: 2/1		SHEET 1 OF 1	

VT Miltope
A company of Vision Technologies Systems

3800 Richardson Road South
Hope Hall, Alabama 36043

IC LABEL,
CAP/WAB

DWG NO. 713888 REV 1

Label Location

MILTOPE CORPORATION

CAGE

MODEL NO.

SER NO.

VOLTS

AMPS

HZ

PH

WC

DOM

DESCRIPTION:

P/N:

REVISION:



R 201

CE0560

FCC ID: SH5-CAP

THIS DEVICE COMPLIES WITH PART 15 OF THE FCC RULES. OPERATION IS SUBJECT TO THE FOLLOWING TWO CONDITIONS.

(1) THIS DEVICE MAY NOT CAUSE HARMFUL INTERFERENCE, AND (2) THIS DEVICE MUST ACCEPT ANY INTERFERENCE RECEIVED, INCLUDING INTERFERENCE THAT MAY CAUSE UNDESIRED OPERATION.

IC ID: 5361A-CAP

This Class B digital apparatus complies with Canadian ICES-003.

Cet appareil numérique de la classe B est conforme à la norme NMB-003 du Canada.

This unit was reset to factory default and then configured with following ip data at the LAN port:

IP address 172.27.60.2, netmask 255.255.255.0

Static routes:

172.27.0.0 netmask 255.255.0.0 gw 172.27.60.1

172.16.0.0 netmask 255.255.0.0 gw 172.27.60.1

VT Miltope

A company of Vision Technologies Systems



POWER

RF ENABLE

RF ACTIVE

LAN ACTIVE

