

# DT-201K Digital Wireless Stereo Headphone Kit

Operation Instructions: **English**

Instructions pour l'utilisation: **Français**

Modo de empleo: **Español**

Bedienungsanleitung: **Deutsch**

使用說明書: 繁體中文 (Instruction Manual: Traditional Chinese)

使用说明书 简体中文 (Insrutcion Manual: Simplified Chinese)

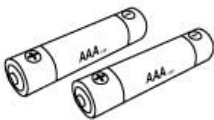
## Product Main Features

- 2.4GHz, wireless digital transmission: it allows freer and more personalized music listening and movie watching without interfering in neighboring people.
- USB / Analog (3.5mm & 6.3mm pins): double audio input, it facilitates bundled applications of all kinds of players.
- 30 meters effective reception distance: You could proceed with your activity while listening to the music indoor.
- One Digital Transmitter (DT-T20): it allows usage of several pairs of headphones for audio reception (it requires optional purchase of DT-201 digital wireless headphones)
- Low Power Consumption Headphone: regular alkaline battery (1.5V AAA x2) may sustain more than 20 hours.
- Large Size Headphone of 40mm Speaker Unit: heavy and distinct bass sound, clear and bright mediant and treble, it reproduces hi-fidelity of the mediant-bass effects and the original audio sound.
- Rechargeable Batteries are adopted for Transmitter: it could sustain 3-6 hours and make convenient outdoor usage.
- The transmitter could be directly linked to USB port by using USB connection cable for power supply purpose or one could choose to use USB power adaptor and link it to USB connection cable for power supply.
- Automatic Sleeping Device: after the audio source terminates for about 10 minutes, the headphone and transmitter will be shut off automatically.
- Applicable to any type of player with USB connection port and audio source output port with  $\phi$  3.5mm plug pin or  $\phi$  6.3mm plug pin such as TV set, Audio Equipment, DVD/CD Player, Desktop Computer, Handheld Computer, iPod, iPhone, MP3 and Cellular Phones, etc.
- 耗電量低，一般鹼性電池(1.5V AAA x2)可以使用 20 小時以上。(重覆)
- Low Power Consumption Headphone: regular alkaline battery (1.5V AAA x2) may sustain more than 20 hours.
- 採用大口徑 40mm 喇叭單元，低音渾厚分明，中高音清澈、明亮，忠實呈現出中低音效果及原音的重現。(重覆)
- Large Size Headphone of 40mm Speaker Unit: heavy and distinct bass sound, clear and bright mediant and treble, it reproduces hi-fidelity of the mediant-bass effects and the original audio sound.
- 自動睡眠裝置，音源中斷約 10 分鐘後，耳機自動關機。(重覆)
- Automatic Sleeping Device: after the audio source terminates for about 10 minutes, the headphone and transmitter will be shut off automatically.

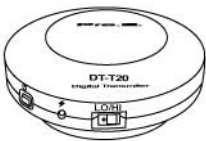
Components and Accessories



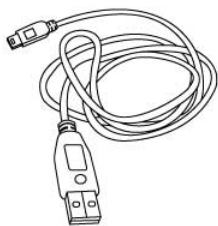
DT-201 Digital Wireless Headphone



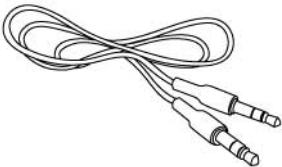
Alkaline Battery 1.5V AAA x 2.



DT-T20 Digital Transmitter



USB Connection Cable



φ 3.5mm Plug Pin with Double Head Connection Cable



RCA Audio Source Adaptor Cable

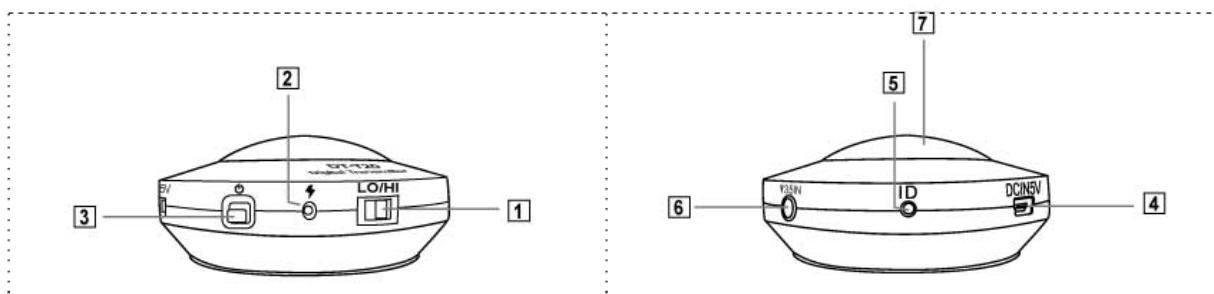


φ 3.5mm→φ 6.3mm Adaptor

Parts Location and Function

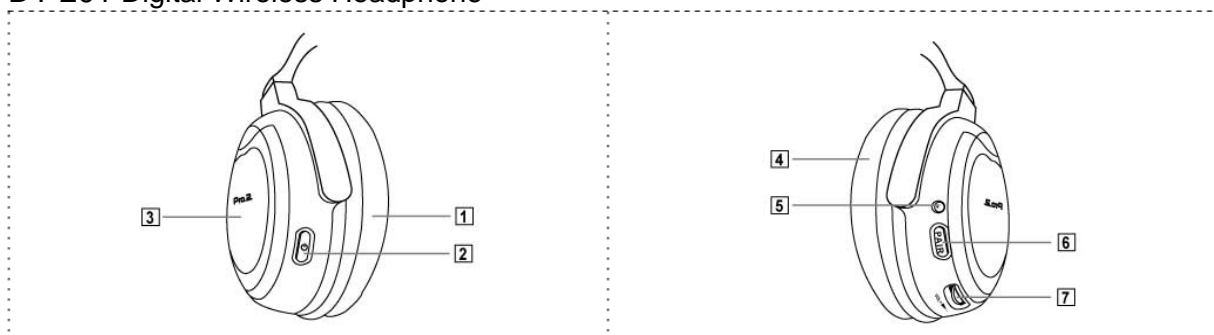
- DT-T20 Digital Transmitter

--	--



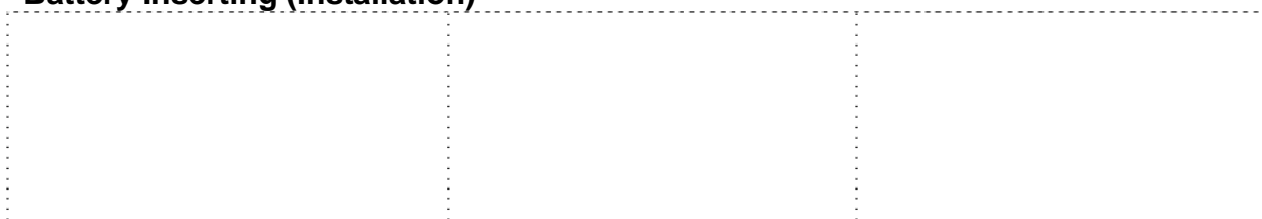
1. LO/Hi : Frequency Transmit Strength Adjust Button, LO Effective Distance about 10 meters, HI Effective Distance about 30 meters, Higher HI Power Consumption
2. ⚡ : Battery Charging Indicator: Indicator will light up red while charging, it will turn off when charging completes.
3. ⏻ : Power Switch, press and hold lightly for 3 seconds to turn on or shut off.
4. DC IN 5V : USB Connection Port for power charging, or being used simultaneously for power charging and audio source input operation.
5. ID : Frequency Verification Push Button, it is used for verifying with headphone frequency.
6.  $\phi$  3.5 IN :  $\phi$  3.5mm Audio Source Input Hole
7. Power and Frequency Verification Indicator (Blue): After turning on the power, if the audio source cable is not connected, it will blink in slow pace, if connected, it lights up continually.

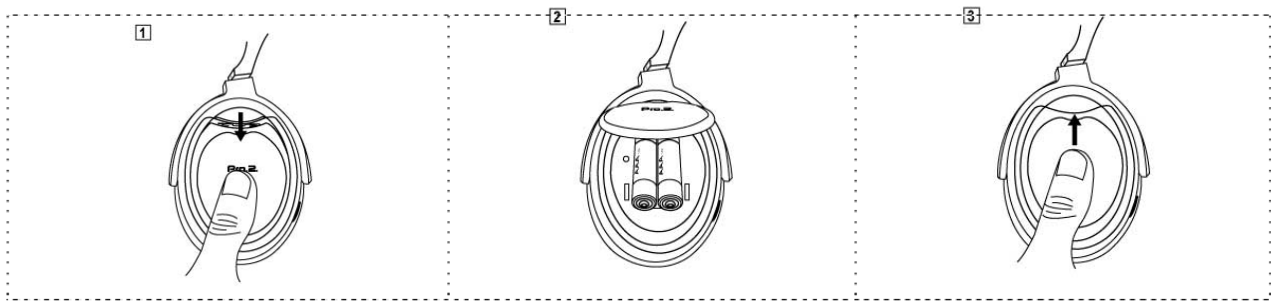
#### ● DT-201 Digital Wireless Headphone



1. Ear Pad (Left)
2. ⏻ : Power Switch, press and hold lightly for 3 seconds to turn on or shut off.
3. Battery Cover: please use AAA 1.5V\*2 alkaline batteries
4. Ear Pad (Right)
5. Power and Frequency Verification Indicator (Green): it blinks in slow pace after turning on the power, it keeps on lighting up after frequency verification completes.
6. PAIR: Frequency Verification Push Button, it is used for frequency verifying with the transmitter.
7. VOL: Volume Adjust Button to adjust the volume level.

#### ● Battery Inserting (Installation)





1. Pressing down lightly the battery cover and opening the cover.
2. Inserting the batteries (AAA 1.5V x 2 Alkaline Batteries)
3. Restoring the battery cover and pushing up lightly and close up the battery cover.

### **Transmitter and Headphone Frequency Verification as well as Usage (Connecting and Listening the Headphone Kit 原英文暫保留，與中文原意不全符合)**

- Frequency verification for transmitter and the headphone has already been completed before delivery from the factory, please follow the operation instructions below:
  - a. Connecting the transmitter with connection cable to the player device (iPod, iPhone, MP3, PC, NB, etc.), proceed to input audio source and confirm that the player has been turned on for music playing.
  - b. Pressing lightly on the transmitter power switch (⏻) for 3 seconds to turn on the transmitter power, now, the power and frequency verification indicator (Blue) will light up continually.
  - c. Pressing lightly on the headphone power switch (⏻) for 3 seconds to turn on the headphone power, now, the power and frequency verification indicator (Green) will light up continually.
  - d. Wearing on properly the headphone and enjoying cozily and happily the wireless freedom and relaxation.
  
- If there are other factors of requirement to add more headphones for using transmitter concurrently, it will be necessary to proceed with the frequency verification between the transmitter and the headphone, please follow the operation procedure below:
  - a. Connecting the transmitter with connection cable to the player device (iPod, iPhone, MP3, PC, NB, etc.), proceed to input audio source and confirm that the player has been turned on for music playing.
  - b. Pressing lightly on the transmitter power switch (⏻) for 3 seconds to turn on the transmitter power, now, the power and frequency verification indicator (Blue) will be kept constant on.
  - c. Using pen tip to press lightly on the transmitter frequency verification button (ID) for 3 seconds, now, the power and frequency verification indicator (Blue) will blink in quick pace.
  - d. Press lightly on the headphone power switch for 3 seconds to turn on headphone power, now, the power and frequency verification indicator (Green) will blink in slow pace.
  - e. Hand-pressing on the headphone frequency verification push button (PAIR) to proceed the frequency verification (pairing) operation with the transmitter (for about more than 3 seconds), until one hears the “bi” sound in the headphone and the transmitter frequency verification indicator has been kept constant on, it indicates that frequency verification (pairing) has been completed.
  - f. When it has been connected for frequency verification, if the frequency verification indicator blinks in slow pace, it indicates it is in the progress of channel searching, quick blinking means in the progress of frequency verifying, if it is constant on, it represents the frequency verification has been completed and the device is ready for use.

- Other Instructions:
  - a. After completing the frequency verification and the product is set to normal use, when the audio source stops playing, the power and pairing indicator will blink in slow pace; if the audio source turns to normal playing, the indicator will be reset to constant on.
  - b. After completing the frequency verification, if the device is enabled for re-operation after being turned off, it is not necessary to perform the frequency verification and the device is ready for direct use by turning it on.
  - c. When stopping using, please turn off both the power switches of the transmitter and headphone to avoid unnecessary power consumption.
  - d. When the transmitter is connected at the same time to USB connection cable and  $\phi$  3.5mm plug pin double head connection cable, the  $\phi$  3.5mm IN connection cable (  $\phi$  3.5 IN 之  $\phi$  3.5mm 連接線? 中文語意不明確) will be selected with priority for audio input; the USB connection cable input will then be automatically transferred into charging function.
  - e. When using on TV, DVD player, please use RCA audio adaptor connection cable to connect to  $\phi$  3.5mm plug-pin double-head connection cable for connecting the transmitter to proceed with audio input.

## Troubleshooting

- Weak headphone volume or no sound at all
  - a. Adjusting headphone volume switch
  - b. Checking whether the audio source playing is stopped or the volume is too small.
  - c. Moving the headphone near to the wireless transmitter
  - d. Performing the frequency verification between the headphone and transmitter once again
- Headphone indicator (Green) is not on
  - a. Shutting off the headphone power and restart it.
  - b. Replacing batteries (AAA 1.5V\*2 Alkaline Batteries)
- Headphone connection can not be set up (Indicator blinks)
  - a. Moving the headphone near to the wireless transmitter
  - b. Making sure whether the connection of the wireless transmitter and the audio source player are properly connected and whether the audio source is playing normally.
  - c. Shutting off the headphone power and restart it.
- Transmitter indicator (Blue) is not on
  - a. Confirming that the wireless transmitter has been properly connected to PC or NB via the USB transmission
  - b. When using  $\phi$  3.5mm plug pin double head connection cable to perform the audio source input, the indicator is still not on
  - c. Using USB connection cable to perform the charging by connecting to PC or NB or plugging the USB power adaptor in the AC socket for charging

## Precautions

- It may impact your hearing when wearing the headphone with high volume or for long-time usage
- Do not use and store the device in high temperature, high humidity and dusty places and keep the

device at a place not reachable by children under three.

- Do not drop off or hit with force to prevent from the damage of the internal circuit board
- Do not place heavy object or apply pressure on the headphone, otherwise, it may be deformed in shape after long-time storage.
- Using soft cloth for wiping when it gets dirty, do not wipe with chemical organic solvent
- Dirtiness or dust on all kinds of plugs will impact the transmission quality of the audio source, please use soft cloth for clean wiping.
- Do not use when it is stained by water, it could only be reused after it has been completely dried.
- Aging may occur if the ear pad has been stored for long time or because of wearing.

## **Federal Communication Commission Interference Statement**

This equipment has been tested and found to comply with the limits for a Class B digital device, pursuant to Part 15 of the FCC Rules. These limits are designed to provide reasonable protection against harmful interference in a residential installation.

This equipment generates, uses and can radiate radio frequency energy and, if not installed and used in accordance with the instructions, may cause harmful interference to radio communications. However, there is no guarantee that interference will not occur in a particular installation. If this equipment does cause harmful interference to radio or television reception, which can be determined by turning the equipment off and on, the user is encouraged to try to correct the interference by one of the following measures:

- . Reorient or relocate the receiving antenna.
- . Increase the separation between the equipment and receiver.
- . Connect the equipment into an outlet on a circuit different from that to which the receiver is connected.
- . Consult the dealer or an experienced radio/TV technician for help.

***FCC Caution:*** To assure continued compliance, any changes or modifications not expressly approved by the party responsible for compliance could void the user's authority to operate this equipment. (Example - use only shielded interface cables when connecting to computer or peripheral devices).

This device complies with Part 15 of the FCC Rules. Operation is subject to the following two conditions:

(1) This device may not cause harmful interference, and (2) This device must accept any interference received, including interference that may cause undesired operation.

## ***FCC Radiation Exposure Statement***

This equipment complies with FCC RF radiation exposure limits set forth for an uncontrolled environment. This equipment should be installed and operated with a minimum distance of 20 centimeters between the radiator and your body.

This transmitter must not be co-located or operating in conjunction with any other antenna or transmitter.

The antennas used for this transmitter must be installed to provide a separation distance of at least 20 cm from all persons and must not be co-located or operating in conjunction with any other antenna or transmitter.