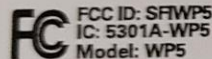




part: L-938 _____

serial: _____



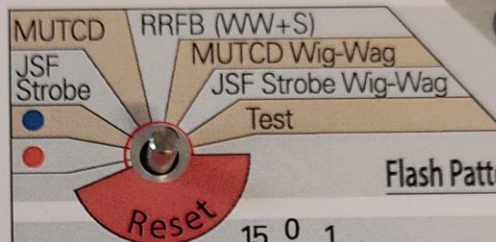
FCC ID: SFWP5
IC: 5301A-WP5
Model: WP5

"This equipment complies with FCC Rules, Part 15 and Industry Canada's ICES 003 for a Class A Digital Device. Operation is subject to two conditions:

- 1) This device may not cause harmful interference, and
- 2) This device must accept any interference that may cause any undesired operation"

"Cet Appareil numerique de la Classe A respecte toutes les exigences du Reglement sur le material brouilleur du Canada."

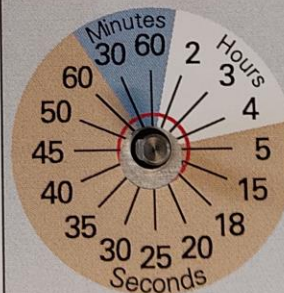
Caution: Changes or modifications to this equipment, not expressly approved by the manufacturer could void the user's authority to operate the equipment.



Flash Pattern



Network Address



Flash Duration



Current Driver

RRFB ☐
Sign LEDs ☐

GE ☐
S2 (Legacy) ☐

FW _____