

# EMI TEST REPORT



Report Number : KSQ-FCC040819

FCCID : SF6DATASTORMINI

## Appendix B - User's Manual

Please see attached document(s).



# **DATASTOR** *mini*

**USB 2.0 ULTRA-Portable Portable Hard  
Drive**

**THE DATA STORED ON THIS HARD DRIVE IS NOT  
GUARANTEED BY POCKETEC.  
POCKETEC IS NOT RESPONSIBLE FOR ANY LOSS OF DATA.  
ALWAYS BACK UP ALL DATA REGULARLY.**

---

## Table of Contents

|  |    |
|--|----|
| Introduction                               | 03 |
| Features and Benefits                      | 04 |
| The POCKETEC Package                       | 04 |
| Minimum System Requirements                | 05 |
| Care and Handling                          | 05 |
| Hardware Installation                      | 06 |
| Software Installation for Windows®         | 07 |
| Software Installation for Macintosh®       | 10 |
| Installing the DataStor for Use with LINUX | 11 |
| Installing the DataStor for Use with DOS   | 11 |
| Removing the DataStor After Use            | 12 |
| Frequently Asked Questions                 | 13 |
| How To...                                  | 17 |
| Warranty Information                       | 18 |
| Contact Information                        | 19 |

## Introduction

Pocketec proudly introduces the DataStor Mini™, the miniature version of the award winning DataStor™ USB 2.0 Drive. The ultra-portable Mini is smaller than your wallet but it packs enough storage space for 5,000 MP3 songs, 29 CDs worth of data, or 8.5 hours of digital video (20GB version). Best of all, the Mini is totally bus powered by the host computer so you don't have to lug around an AC adapter or worry about batteries. Just plug the Mini into the USB port of your computer and you instantly have access to 20GB of extra storage space.

The DataStor Mini™ works with laptops and desktops and is compatible with Windows®, MAC, DOS and Linux, so cross-platform file sharing is a breeze. The Mini is USB 2.0 certified, offering the fastest transfer rates. Plug-N-Play, hot-swappable, and hot-pluggable features make the Mini convenient and easy to use. The Mini is the perfect way to back up your critical data or to take your data with you wherever you go.

\*To achieve USB 2.0 speeds, your computer must be USB 2.0 enabled.

## Features and Benefits

- USB 2.0 certified with transfer rates up to 480Mbps (40x faster than USB 1.1)
- Backwards compatible with USB 1.1
- Tiny footprint offers maximum portability
- Massive storage capacity
- Stackable (multiple DataStor minis can be attached to your computer)
- No additional power source required (no batteries or AC adapter required)
- Cross-platform compatible (Windows®, MAC OS, LINUX and DOS)
- Plug-N-Play (drivers not required for Windows® XP/2000/ME and MAC OS 10.1+)
- DOS Level Support
- Average sustained write speed of 16MB/s and read speed of 18MB/s\*

## The POCKETEC Package

Your POCKETEC™ package contains the following:

- DataStor mini Ultra-Portable Hard Drive
- Standard DataStor mini USB connection cable
- Quick Start Guide
- CD-ROM Installation mini-CD with E-Manual
- Mini Carrying Case
- One-Year Limited Warranty

\* The speed may vary depending on the host computer. The average sustained speed is the average transfer rates of the drive on various computers using performance-testing software.

## Minimum System Requirements

- 400MHz or equivalent processor
- Minimum required RAM for your OS
- Windows® 98/98SE/ME/2000/XP, MAC OS 8.6 or higher
- Available USB port (Note: to achieve USB 2.0 speeds you must use the DataStor mini with a USB 2.0 port)
- CD-ROM drive for driver installation or Internet connection for driver download.

Note: Driver not required for Windows® ME/2000/XP and MAC OS 10.1 +.  
Driver required for Windows® 98/98SE and MAC OS 8.6-10.0.x.

Note: For Macintosh® computers with a front-loading CD-ROM, please download the drivers from [www.pocketec.net](http://www.pocketec.net) and install the downloaded drivers. (Front-loading CD-ROM drives cannot read mini-CDs). Only use the mini-CD for CD-ROM drives with a slide-out tray.

## Care and Handling

- Please keep the DataStor mini in the protective carrying case when it is not in use, so as to minimize risk of damage. Always handle your DataStor mini drive carefully.
- Do not move or disconnect the DataStor mini from your computer while the DataStor mini drive is writing or reading data to or from the drive. This may cause loss of data or damage to the hard drive.
- Before unplugging the DataStor mini or turning off the DataStor mini, click on the "Stop Storage Device" icon on the task bar (or for the MAC, drag the DataStor mini drive to the trash can), then turn the DataStor mini drive's power switch to the "OFF" position. Failure to do so may cause loss of data or corruption of the partition. Note: this is not required for LINUX or DOS. Failure to do so may cause loss of data.
- No formatting is necessary. The DataStor mini is already formatted. DO NOT leave the DataStor mini connected and on while reformatting other drives.

## Care and Handling

- DO NOT open the outer case. Opening the case may damage the DataStor mini, its components or the hard drive and will VOID THE WARRANTY.
- DO NOT expose the DataStor mini to extreme temperatures or humidity. Either may cause serious damage to the hard drive.
- DO NOT put on or near electromagnetic equipment such as amplifiers, speakers, source units, magnets or any other magnetized devices.
- DO NOT shock the drive. Static shock can cause the drive to lose data.

## Hardware Installation

First, make sure you have all the package contents. You should have one USB cable, one DataStor mini drive, one installation mini-CD w/E-Manual, one Quick Start Guide and one carrying case. If you are missing any of the above contact POCKETEC immediately. If you are running MAC OS 8.6 – 10.0.x you **must** first install the drivers.

1. Take the USB cable and locate an available USB port on your computer.
2. Connect the USB connector to your USB port on the computer or powered USB hub. *Note: Only USB ports located directly on the computer or a powered USB hub will provide sufficient power. USB ports on keyboards or non-powered USB hubs will not work.*
3. Connect the mini-USB connector to your DataStor mini drive.
4. Make sure all connections are secure.
5. Turn the power switch to the “USB” position. (DO NOT TURN THE POWER SWITCH TO THE EXT POSITION).



That completes the Hardware Installation Process

## Driver Installation For Windows®

Software drivers are not required for computers running the following operating systems:  
Windows® ME/2000/XP

Software drivers must be installed for Windows® 98 and 98SE. For driver installation from the mini-CD, follow steps 1 - 7 below after the hardware installation.



1. Insert the POCKETEC Drivers CD into your CD-ROM.
2. Select Next at the new hardware wizard.



3. Select "Search for the best driver for your



device (recommended)" and select Next.

4. Check the CD-ROM drive only and select Next.
5. When the wizard finds the JLIX00.INF driver



select Next.

6. Select Finish to complete the driver installation process.



For driver installation of the downloaded drivers, please view the next page.



## Downloaded Driver Installation For Windows®

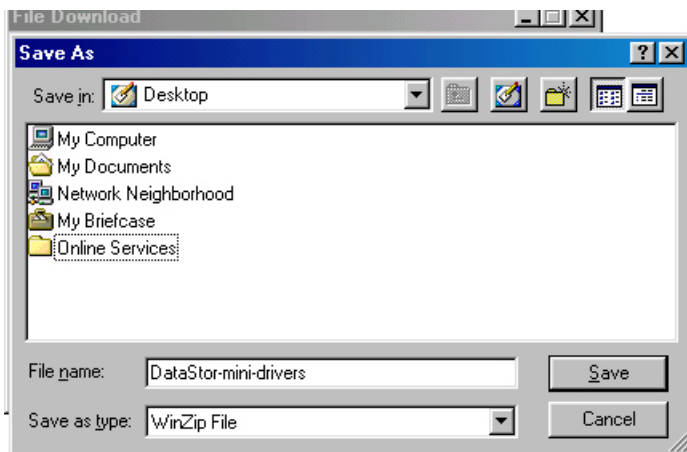
Software drivers are not required for computers running the following operating systems:  
Windows® ME/2000/XP

Software drivers must be installed for Windows® 98 and 98SE. For driver installation from the downloaded file, follow steps 1 - 19 below.

1. Go to [www.pocketec.net](http://www.pocketec.net)
2. Go to the DOWNLOADS section and click drivers for Windows.
3. Select the "DataStor mini" link to download the drivers.

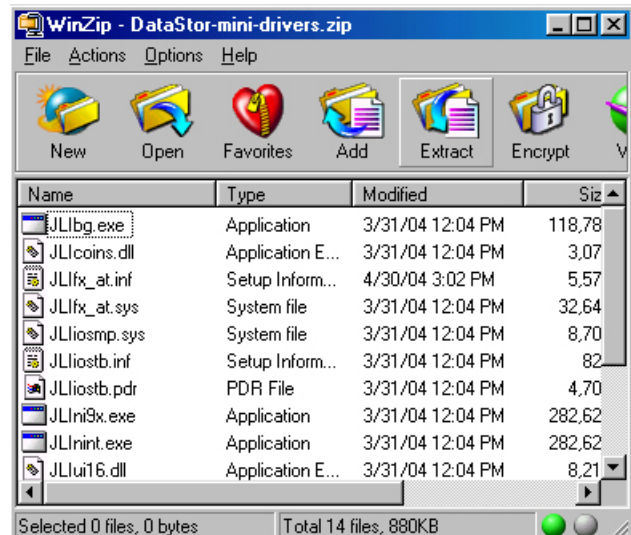
### *Drivers for the DataStor mini USB 2.0 ULTRA-portable drive*

| Operating System                      | File                                  | Version   | Size   |
|---------------------------------------|---------------------------------------|---|--------|
| <b>Windows<br/>98/98SE/ME/2000/XP</b> | <a href="#">DataStor-mini-drivers</a> | Version 6.0 raw driver files<br>(last updated April 30, 2004)<br>This driver is not for Windows 2003.<br>DO NOT install on a Windows 2003 system! | 316 KB |

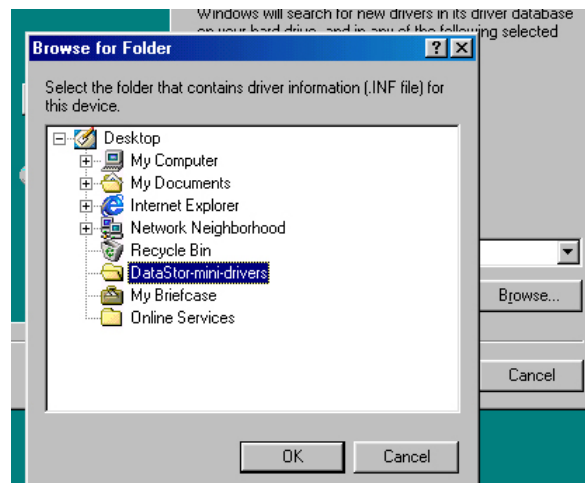


4. Download the files to your desktop.
5. Open the DataStor-mini-drivers.zip file.
6. Select Extract to unzip the files to a location on your computer.

7. Select to extract the files to a directory (in this example we are using the desktop).
8. After the drivers are successfully extracted, close the extraction program.
9. Next, plug in your DataStor mini drive.
10. Turn it on to the "USB" position.



11. Wait for the “Add New Hardware Wizard” to start.
12. Select “Next” when the wizard starts.
13. At the next window. Select “Search for the best driver for your device. (Recommended).”
14. Select “Next” to continue.
15. Check the box next to “Specific Location”
16. Select Browse, and browse to the DataStor-mini-drivers folder (in this example it was extracted to the desktop). And select OK.



17. Select Next to continue the installation.



18. After the wizard picks up the drivers, select Next to continue.
19. Select Finish to complete the driver installation.

## Driver Installation for Macintosh®

Software drivers are not required for computers running the following operating systems:  
 MAC OS 10.1.x – 10.3.4.

Software drivers must be installed for MAC OS 8.6-9.2.2. For driver installation from the mini-CD, follow steps 1 - 6 below.

1. Insert the DataStor installation CD into your CD-ROM.
2. Open the "MAC OS 8-9" folder.
3. Open the "Cypres~.sit" file.
4. Expand the file using sit expander.

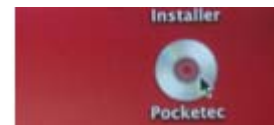


5. Wait for the driver to finish loading.
6. If you do not receive the message to restart your computer or you select not to restart your computer, restart your computer before turning on the DataStor mini. Note: you MUST restart your computer in order to complete the driver installation process.

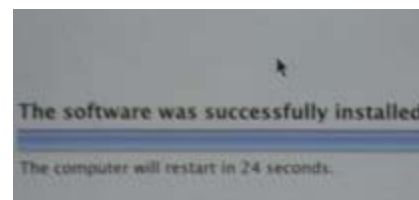


Driver installation for MAC OS 10.1.x +. Follow steps 1 – 7 below.

1. Insert the mini-CD into the CD-ROM tray/slot.
2. Wait for the POCKETEC CD to appear and open it.
3. Open the folder MAC OS 10.
4. Expand the Cypress Installer and save it somewhere on your computer.



5. Open the Cypress Installer that was saved to your computer.
6. Follow the installer and choose your options.
7. Restart your computer when the installation is finished.



## Mounting In Linux

To mount the DataStor mini in Linux, follow steps 1 – 8 below.

Note: Drivers are not required for Linux. You should do this in your “root” account

1. Locate the mini-USB to USB cable
2. Locate the DataStor
3. Plug the USB cable directly into a USB port on the computer
4. Plug the mini-USB into the mini-USB port on the DataStor
5. Turn the DataStor power switch to USB
6. Use whatever partitioning tool to see if the DataStor is recognized and the partition is seen.
7. Create a mount point in folder mnt, i.e. `mount /dev/sda1 /mnt /<name here>`
8. Type the following in FSTAB:  
`/dev/sda1 /mnt/usbhd vfat noauto,user,owner,rw 0 0`

Note: SDA1 may not be the DataStor, type in the proper scsi device.

## Installing in DOS

Note: DUSE does not work all BIOS, for latest DUSE version you may check our website: [www.pocketec.net](http://www.pocketec.net) Also, the DUSE drivers are not compatible with USB 2.0 PCMCIA cards.

1. Create a Win98/98SE boot disk
2. Add the DUSE.exe and DUSEALDR files to the boot disk
3. Open the config.sys file in notepad
4. Add the line `device=a:\duse.exe`
5. Close notepad, save changes
6. Plug-in the DataStor directly into a USB port on your computer
7. Boot to DOS
8. Wait for drivers to load and enable USB support
9. Turn the DataStor on to “USB”

Note: If the drivers did not load properly or having trouble with the drive in DOS please visit our trouble shooting section.

## Safely Removing the DataStor mini After Use (Windows®)



1. Locate the safe removal icon in your system tray.

2. Select the safe removal icon and choose the DataStor mini.
3. Your computer will notify you that the DataStor mini is safe to be removed
4. Turn the DataStor mini off then unplug it from your computer.



## Safely Removing the DataStor mini After Use (MAC OS 8.6 and higher)

1. Select the DataStor mini.
2. Drag the DataStor mini icon to your trash can on your desktop.
3. Select to remove the DataStor mini.

## Frequently Asked Questions

Questions answered in this section:

- Q: Do I really have to use the safe removal tool each time I want to turn off/disconnect my DataStor mini?
- Q: How do I use my DataStor mini?
- Q: Why doesn't the DataStor mini work with Windows 95 and Windows NT?
- Q: Can I use a USB hub with the DataStor mini?
- Q: Can I daisy chain the DataStor mini to other DataStor mini drives?
- Q: Why doesn't my DataStor mini work with my computer?
- Q: How do I format my DataStor mini?
- Q: What are the Minimum System Requirements for the DataStor mini?
- Q: Why does my transfer rate seem so slow when it says it can transfer up to 480Mbps?
- Q: Why does the DataStor mini show less space available than what I bought?
- Q: Can I leave the DataStor mini on all day and night, every day?
- Q: What back up program do I need to use to back up my computer?
- Q: Why does the DataStor mini driver for Windows XP give me a warning message when I install the drivers?
- Q: Why is the LED on the DataStor mini red?
- Q: Where can I buy extra cables?
- Q: Why can't I transfer more than 4GB at a time?
- Q: What kind of utilities can I use with my DataStor mini?
- Q: Does the DataStor mini work with Pocket PCs and PDAs with USB ports?
- Q: Can I download pictures from my digital camera directly to the DataStor mini without plugging both devices into a computer?

## Questions and Answers

**Q:** Do I really have to use the safe removal tool each time I want to turn off/disconnect my DataStor?

**A:** Yes, we highly recommend that you use the safe removal tool. It is important because if you are transferring data to the drive and you happen to forget it and you unplug the drive or turn off the drive, it can cause serious harm not only to the DataStor but also to your internal hard drive. However, for intermediate to advanced users you may want to bypass this step by disabling the write cache. But remember, by turning off or removing the drive while still it is being accessed can cause harm to the drive even with the write cache disabled.

**Q:** How do I use my DataStor?

**A:** Think of the DataStor like your internal hard drive except it is portable, so you can carry it with you. Now, when you save data, documents for example, you can save it to the DataStor rather than your internal drive. All you have to do is browse to it. For more detailed examples and instructions on how to do a back up or transfer data, please view the "How To" portion of this manual.

**Q:** Why doesn't the DataStor work with Windows 95 and Windows NT?

**A:** The DataStor and other USB drives do not work with those two operating systems because those systems do not support USB drives.

**Q:** Can I use a USB hub with the DataStor?

**A:** You may use a USB hub if and only if it is a powered USB hub. A powered USB hub is a USB hub that draws its power from a wall power outlet.

**Q:** Can I daisy chain the DataStor to other DataStor drives?

**A:** No, there is no extra port on the Datastor for daisy chaining. In order to stack the drives, you will need to plug each drive into a USB port of the host computer or a powered USB hub.

**Q:** Why doesn't my DataStor work with my computer?

**A:** There are numerous reasons why the DataStor may not be working with your computer. Please visit <http://support.pocketec.net/dsmini/>



**Q:** How do I format my DataStor?

**A:** You can format your DataStor drive in Windows 98/SE/ME/2000/XP, DOS and OS X+. Please go to the How To Guide for detailed instructions on how to format your DataStor in the specific OS.

**Q:** What is the Minimum System Requirements for the DataStor?

**A:** The system requirements are: 400Mhz or equivalent processor, your operating systems minimum RAM requirement, and minimum operating hard drive space. Windows 98/SE/ME/2000/2003/XP, DOS 4+, Linux Kernal 2.4.5+, OS 8.6-9.2.1, or OS 10+. Available USB port, CD-rom tray for driver installation or internet connection for driver download.

**Q:** Why does my transfer rate seem so slow when it says it can transfer up to 480Mbps?

**A:** The USB 2.0 speed can transfer up to 480Mbps or 60MBps. (8bits = 1Byte, 480Mbits divided by 8bits = 60MB per second). However, the actual rotational speed of the drive is 4200RPM, which can only handle 128Mbps or 16MBps.

**Q:** Why does the DataStor show less space available than what I bought?

**A:** When connected to a computer the drive space is seen in binary. When people say 1KB = 1000Bytes, 1MB = 1000KB, 1GB = 1000MB, but the computer sees it as 1KB = 1024Bytes, 1MB = 1024KB, 1GB = 1024MB. After doing the math and factoring in the 24MBytes per GB results in the computer showing less than what you would think the capacity is. Also, the partition takes up some space as well as the file system.

**Q:** Can I leave the DataStor on all day and night, every day?

**A:** Yes you can leave the DataStor on all day and night, however it is not recommended that you do so. The DataStor is designed to function as a secondary hard drive and not your primary hard drive. If you need a drive to use as both secondary and primary drive, we recommend the DataStor PRO series for that task.

**Q:** What back up program do I need to use to back up my computer?

**A:** Any back up program that can back up to a file can back up your computer and data onto the DataStor. We offer technical support for the built-in Windows back up program and BackUp MyPC only.



**Q:** Why does the DataStor driver for Windows XP give me a warning message when I install the drivers?

**A:** Due to the drivers not being WHQL certified for Windows XP, it will give you that warning message. However, our drivers have been tested for compatibility for Windows XP and do not cause your system to become unstable or crash.

**Q:** Why is the LED on the DataStor red?

**A:** The LED can be red, green or orange. Depending on the internal hard drive of the DataStor the LED color will vary. The LED does not indicate that the drive is working or not working. It's more of an action light. Of course if the LED is not on at all, that would indicate that it is not receiving power at all.

**Q:** Where can I buy extra cables?

**A:** You can purchase additional cables from our website. Please visit:  
<http://www.pocketec.net> to purchase extra cables.

**Q:** Why can't I transfer more than 4GB at a time?

**A:** The DataStor comes preformatted under the FAT32 file system, thereby making it compatible with Win 98/SE/ME/2000/2003/XP, DOS, Linux and MAC OS 8.6+. However, DOS and Windows places a 4GB transfer limitation for FAT32 file systems. You may remove this limitation by reformatting the DataStor to the NTFS file system. However, the NTFS file system is only compatible with Windows 2000/2003/XP, Linux, some versions of DOS and MAC OS 10.3 – 10.3.2. Also, whenever you format the drive, you will erase ALL data on the drive so make sure that you have a copy of your important data prior to formatting.

**Q:** Does the DataStor mini work with Pocket PCs and PDAs with USB ports?

**A:** The DataStor mini is not compatible with any Pocket PCs or PDAs.

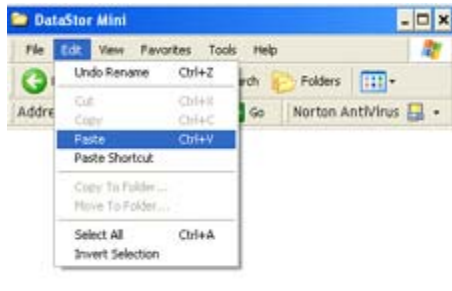
**Q:** Can I download pictures from my digital camera directly to the DataStor mini without going through a computer?

**A:** No, you cannot plug your DataStor mini into your digital camera. You must first download the pictures to a computer and then transfer the pictures from your computer to the DataStor mini.

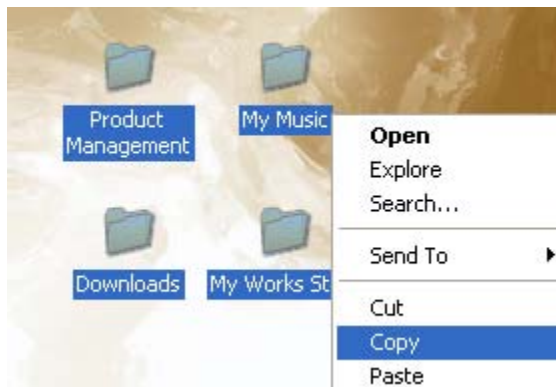
## How To...

### Transfer Files and Folders to the DataStor mini

#### Copy and Paste

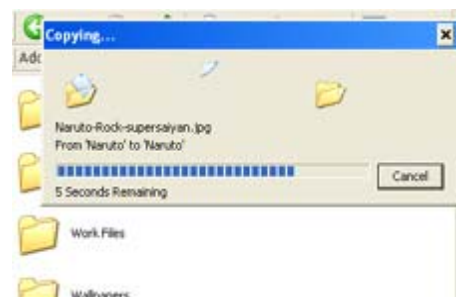


1. Select the files you want to transfer.
2. Right-click on the selected files.
3. Select Copy.
4. Open the DataStor mini.
5. Go to Edit and select Paste.
6. Wait for the transfer to complete before safely removing the drive.



#### Drag and Drop

1. Open the DataStor mini Window.
2. Select the files you want to copy and hold down the mouse-1 button.
3. Drag the mouse cursor over to the DataStor mini Window and release the mouse-1 button.
4. Wait for the transfer to finish before safely removing the DataStor mini.



Note: For instructions on how to use backup software please visit: <http://support.pocketec.net/dsmini/>

### ***One-Year Limited Warranty***

POCKETEC's warranty obligations are limited to the terms set forth below: POCKETEC warrants that, subject to the following limitations, each of its products ("Product") will be free from defects in material and workmanship and conform to the POCKETEC specifications for a period of ONE (1) YEAR from the date of the original retail purchase. This warranty applies only to Products manufactured by POCKETEC that contains the "POCKETEC" trademark, trade name, or logo affixed thereon.

POCKETEC will have no liability for any Product returned if POCKETEC determines that:

The Product was not purchased from an authorized reseller.

The person asserting the warranty is not the original purchaser of the Product.

The asserted defect is attributable to misuse, abuse, mishandling, improper installation, alteration (including removing or obliterating labels), or accident while in the possession of someone other than POCKETEC.

Your exclusive remedy for any defective Product is limited to the repair or replacement of the defective Product. POCKETEC may elect which remedies to provide in its sole discretion. POCKETEC shall have a reasonable time after determining that a defect exists prior to repairing or replacing a defective Product. POCKETEC's replacement Product under its limited warranty will be manufactured from new and serviceable used parts. POCKETEC's warranty applies to repaired or replaced Products for the balance of the applicable period of the original warranty or ninety days from the date of shipment of a repaired or replaced Product, whichever is longer.

There are no warranties that extend beyond the face of the POCKETEC limited warranty. POCKETEC disclaims all other warranties, expressed or implied, regarding the Products, including any implied warranties of merchantability, fitness for a particular purpose or non-infringement. Some jurisdictions do not allow the exclusion of the implied warranties.

POCKETEC's entire liability for any defective Product shall in no event exceed the purchase price of the defective Product. This limitation applies even if POCKETEC cannot or does not repair or replace any defective Product and your exclusive remedy fails of its essential purpose.

POCKETEC has no liability for general, consequential, incidental or special damages. These include loss of recorded data, the cost of recovery of lost data, lost profits, downtime, loss of goodwill, damage to or replacement of equipment and property, the cost of the installation or removal of any Products, the installation of replacement Products, and any necessary inspection, testing, or redesign caused by any defect or by the repair or replacement of Products arising from a defect in any Product.

In the United States, some states do not allow exclusion or limitation of incidental or consequential damages, so the limitations above may not apply to you. This warranty gives you specific legal rights, and you may also have other rights that vary from state to state.

## **Contact Us**

For more information or customer service, please reach us at:

<http://www.pocketec.net>

Customer Service and General Inquiries:

[info@pocketec.net](mailto:info@pocketec.net)

818-717-9556

Technical Inquiries:

[support@pocketec.net](mailto:support@pocketec.net)

818-717-9556 Press 2 at the Menu

Online Technical Support Site

<http://support.pocketec.net>

Sales Inquires:

[sales@pocketec.net](mailto:sales@pocketec.net)

## **FCC Compliance Statement**

This device complies with Part 15 of the FCC Rules. Operation is subject to the following two conditions : (1) this device may not cause harmful interference, and (2) this device must accept any interference received including interference that may cause undesired operation.

## **INFORMATION TO THE USER**

This equipment has been tested and found to comply with the limits for a class B digital device, pursuant to Part 15 of the FCC Rules.

These limits are designed to provide reasonable protection against harmful interference in a residential installation. This equipment generates, uses and can radiate radio frequency energy and if not installed and used in accordance with the instructions, may cause harmful interference to radio communications.

However, there is no guarantee that interference will not occur in a particular installation. If this equipment does cause harmful interference to radio or television reception, which can be determined by turning the equipment off and on, the user is encouraged to try to correct the interference by one or more of the following measures:

- Reorient or relocate the receiving antenna.
- Increase the separation between the equipment and receiver.
- Connect the equipment into an outlet on a circuit different from that to which the receiver is connected.
- Consult the dealer or an experienced radio/TV technician for help.

## **WARNING**

THE MANUFACTURER IS NOT RESPONSIBLE FOR ANY RADIO OR TV INTERFERENCE CAUSED BY UNAUTHORIZED MODIFICATIONS TO THIS EQUIPMENT. SUCH MODIFICATIONS COULD VOID THE USER'S AUTHORITY TO OPERATE THE EQUIPMENT.