

Basic Operations

Playing Music

Play

Press the () button for a second when the earphone is connected to the unit. Then the power will turn on and the music will playback.

Stop

Press the () button for a second. Then the player will stop and the power will automatically turn off. Also the power will automatically turn off if the earphone is not connected.

Next Track

If you press (|) button during playback, next track will be played back from its beginning.

Previous Track

If you press (|) button within 5 seconds after playback, previous track will be played back from its beginning.

To the beginning

If you press (|) button within 5 seconds after playback, previous track will be played back from its beginning.

Volume Control

Volume-up

Press volume + button during playback.

Volume-down

Press volume - button during playback.

Specifications

| | |
|--------------------------------|---|
| Frequency Range | 20Hz ~ 20KHz |
| earphone Output | (L)10mW + (R)10mW (16 Ohm) |
| File Type | MPEG 1/2/2.5 Layer 3 |
| Battery Type | Li-Polymer 110mA/H |
| Dimension | 40(W)*40(L)*8(D)mm |
| Weight | 25g |
| Operational Temperature | -25 ~ 85 |
| Memory Type | Built-in 128MB, 256MB |
| Interface | USB 1.1 |
| Playback Hours | About 12 Hrs. playback time. |
| O/S Supported | Win 98, ME, 2000, XP, MAC OS 8.6 |
| Included Accessory | Earphone, USB Cable, Neck Strap, User's Guide |

iBOM

Instruction Manual

NOTE: This equipment has been tested and found to comply with the limits for a Class B digital device, pursuant to Part 15 of the FCC Rules. These limits are designed to provide reasonable protection against harmful interference in a residential installation. This equipment generates, uses and can radiate radio frequency energy and, if not installed and used in accordance with the instructions, may cause harmful interference to radio communications. However, there is no guarantee that interference will not occur in a particular installation. If this equipment does cause harmful interference to radio or television reception, which can be determined by turning the equipment off and on, the user is encouraged to try to correct the interference by one or more of the following measures:

- Reorient or relocate the receiving antenna.
- Increase the separation between the equipment and receiver.
- Connect the equipment into an outlet on a circuit different from that to which the receiver is connected.
- Consult the dealer or an experienced radio/TV technician for help.
- Changes or modifications not expressly approved by the party responsible for compliance could void the user's authority to operate the equipment."

Precautions

Safety

- Avoid dropping or impacting the player
- Avoid contacting the player with water or chemical material
- Do not leave the player in a place subject to heavy vibration or magnet
- Do not dislocate the player
- Do not leave the player in a location near heat sources, or in a place subject to direct sunlight, excessive dust or sand, moisture, rain, mechanical shock, unlevelled surface, or in a car with its windows closed
- All data stored on the player may be erased by a excessive impact, a thunder, or an electricity failure

On Power Sources

- Battery life time will be shortened by over-charge or over-discharge
- For longer time use of battery, please fully charge and discharge the player

Basic Operations

Power On/Off

- **To turn on the player**
Press button
- **To turn off the player**
Press button for more than 3 seconds

Attach and detach the player

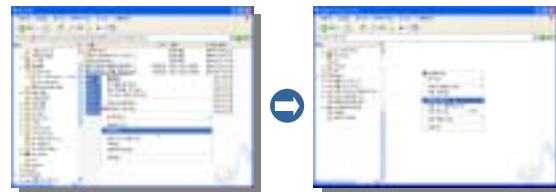
When the player is attached to the PC, you may transfer a file from the player to PC and other way around while charging the device.

1. Connect the USB cable to the USB port of your computer
2. Connect the other end of the USB cable to the USB port of the player
3. The player will be connected and recognized as 'Portable Device'
4. When detaching the player, select and click "Safely remove hardware" and follow the procedure

Basic Operations

File Transfer

1. Open 'File Explorer' on your PC after connecting
2. Check if the player recognized
3. Copy the preferred files and paste them to 'Portable Disk'



Caution : Do not detach the cable when transferring the files

Support any format of files

The player can be used as a portable storage.

Charging by using USB cable

1. Connect USB cable to the player and the PC
2. The battery will begin charging and the player will be recognized as 'New Disk'