



Installation Manual

BLE module 2392755

General

The BLE module 2392755 is for Hilti internal usage only. The module is not intended to be sold to a third party. It serves as a component to establish the communication between the different parts of the rotating laser platform.

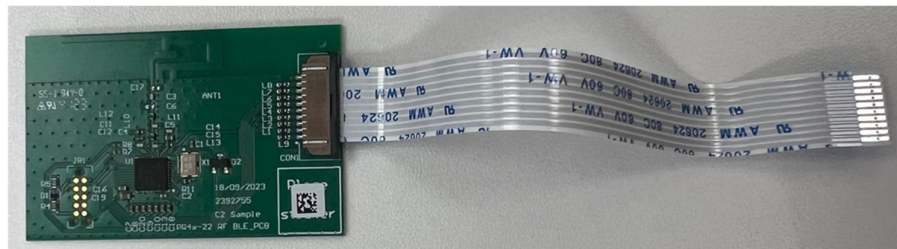
This module is designed for the incorporation into battery driven devices only, e.g. the usage inside the rotating laser and the automatic tripod of the rotating laser platform. The usage of the BLE module in mains powered devices is not allowed. For using the module in host (platform) devices that can be operated while connected to the public AC power lines, additional compliance measurements (AC Powerline Conducted) are required.

The module is FCC approved following the Limited Modular Approval procedure. The module integration can only be done by Hilti. The approval procedure of the module integration into a host product has to follow the C2PC process in addition to the LMA-approval.

The BLE module 2392755 has the following dimensions: 50mm * 32mm. The thickness of the PCB itself is 1.1mm. Including soldered components the height is approximately 3.9mm. The connector soldered on the PCB is an Amphenol of the SFW-R series - 1.00MM ZIF RIGHT ANGLE FFC-FPC Connector. The cable connection to the electronics of the device is made with a flat cable 319125 (Hilti part number), which e.g. for the rotating lasers connects the BLE-module with the Interface Board.

The Interface Board guarantees the regulated power supply of 3.6Vdc for the BLE module 2392755.

Installation procedure



Connect the BLE-module with the flat cable.



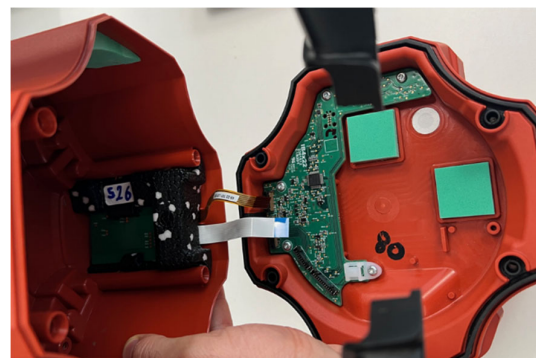
Insert the BLE-module in the respective holder.



Mount the BLE-module holder in the upper part of the rotating laser housing



Connect the upper part with the BLE-module to lower housing part with the interface board





Testing / Verification

Based on the limited modular approval of the module of concern, hosts incorporating the BLE module need to be tested according to the relevant FCC- and ISSED-regulations. Tests to be done with the host product including the module are according to FCC 15.247(b)(3) - Output Power and 15.247(d) - Radiated Out-of-band Emissions and Restricted Bands.

Marking and user information

The FCC ID and the IC-number of the BLE module need to be mentioned on the end device with a "Contains" statement. The wording shall be "Contains FCC ID: SDL-PR4X" and "Contains IC: 5228A-PR4X".

The operating instructions of the end device containing the BLE module must include the following:

1. User Information according to FCC 15.21:
Changes or modifications not expressly approved by the party responsible for compliance could void the user's authority to operate the equipment.
2. Part 15 Statement according to FCC 15.19 (if the statement is not on the product because it is smaller than the palm of a hand):
This device complies with Part 15 of the FCC Rules. Operation is subject to the following two conditions:
(1) This device may not cause interference.
(2) This device must accept any interference, including interference that may cause undesired operation.
3. Statement according to RSS GEN Issue 5:
This device contains licence-exempt transmitter(s)/receiver(s) that comply with Innovation, Science and Economic Development Canada's licence-exempt RSS(s). Operation is subject to the following two conditions:
(1) This device may not cause interference
(2) This device must accept any interference, including interference that may cause undesired operation of the device.

Cet appareil contient des émetteurs / récepteurs exemptés de licence conformes aux RSS (RSS) d'Innovation, Sciences et Développement économique Canada. Le fonctionnement est soumis aux deux conditions suivantes: (1) Cet appareil ne doit pas causer d'interférences (2) Cet appareil doit accepter toutes les interférences, y compris celles susceptibles de provoquer un fonctionnement indésirable de l'appareil.

Additionally, the operating instructions of mobile devices shall include the following statement in English and French translation:

"This equipment complies with the respective radiation exposure limits. This equipment should be installed and operated with minimum distance 20 cm between the radiator & your body."