



GKB GROUP CO., LTD.
Add: No.98 He Dong Road Fang Cun District, Guangzhou, 510380 P.R.China
Tel: 0086-20-81570688 Fax: 0086-20-81558466
www.gkbgroup.com
E-mail: marketing@gkbgroup.com

ZQ107-1



Wireless Two-way Intelligent Control System



User Manual



Brief Introduction	1
Main functions	1
Product models	2
LCD panel/LCD controller	3
Operation temperature	3
Parameters	3
Optional elements	4
Accessories	4
Attention	4
Cleaning an LCD screen	4
Cleaning the surface of an LCD panel	4
Outside view of an LCD panel	5
Outside view of LCD controller	6
Installing a panel	7
Installing a LCD controller	8
Installing Batteries	9
Receiver instructions	9
Installing a receiver	10
System code setting	11
Receiver code setting	13
Force start/shut down	15
Reading a receiver code	16
Reading a system code	16
Setting a relay	16
Operating instructions	17
Shortcut functions	25
Dimmer functions	27
Controlling curtain positions	28
Wireless controller	29
Operation temperature	29
Parameters	29
Accessories	29
Attention	29
Outside view	30
System code setting	31
Receiver code setting	32
Operation instructions	34
Dimming Receiver	35
Reference Standards	35
Definition	35
Parameters	35
Accessories	35
Dimming functions	36



Receiver	37
Reference Standards	37
Definition	37
Parameters	38
Accessories	38
Receiver functions	38
Receiver code setting	39
System codes setting	41
Code reading	42
Setting a relay	43
Force start/shut down	43
Smart Socket	44
Reference Standards	44
Definition	44
Parameters	45
Functions	45
Key functions	45
Two-way transmission	47
Relay functions	47
Curtain receiver	48
Air conditioner receiver	48
Reference Standards	48
Definition	48
Parameters	49
Functions	49
Code setting	50
Code Reading	52
Force start/shut-off	53
Setting a relay	53
Controlling curtain positions	54
Learning function description	55
Outside view	56
Key functions of Air conditioner receiver	57
Learning function of Air conditioner receiver	58
Setting relay functions of Air conditioner receiver	59
Installation of Curtain receiver	59
Installation of Air conditioner receiver	60
Troubleshooting	61

Wireless two-way intelligent control system

Brief Introduction

DigitHome is an intelligent control system utilizing wireless transmission, MCU control etc., suitable for controlling household appliances. This intelligent system consists of LCD control panels and receivers etc. The battery-powered panels permit wireless connection and can be mounted on the wall or placed in any positions. Receivers can be fixed beside or inside electric appliances even inside ceilings.

The LCD control panels and receivers are capable of wireless transmission. Keys on the LCD control panels can control the switches inside the receivers, so that lights and electric appliances can be turned on/off. The product is able to control up to 48-line lights or electric appliances.

Main functions

1. Central control Any one of the panels can control all the electric appliances.
2. Central display LCD control panels can display all the electric appliances status.
3. Multipoint control An electric appliance load can be controlled by multiple control panels.
4. LCD controller By RF wireless transmission control, the control panels can server as LCD controllers.
5. Two-way transmission Control panels and receivers have two-way transmission. The control panels can display all the electricity status.
6. Lock functions A certain load can be locked by a control panel and is not controllable by another controller
7. Setting passwords Passwords for every intelligent system and serial numbers for every receiver can be set by control panels and receivers.
8. Full on/off function Press the full on/off key to turn on/off all the loops.
9. Setting scenes Five scenes can be set to adapt to various lighting environments.
10. Energy-saving mode If no operation is performed or no signal is received on the panel within 20 seconds, the display will be automatically turned off and energy saving mode will be activated. You can restore the display by pressing any key.
11. Relay functions Any of the receivers can be set as a relay to reinforce the accuracy of the signal received, but one system can only have one relay.
12. Luminous display The background color of an LCD is blue at normal status.

①

13. Force start/shut down function Press 2 keys on a receiver can force start or shut down a loop.
14. Reading password With the control panels and receivers together, password and receiver codes of receivers displayed can be read on the control panels.
15. Control of curtain moving positions Moving positions of a curtain can be controlled.
16. Dimmer functions Intensity of light can be adjusted.
17. Telephone LCD controller All loads can be LCD controllered through telephone.
18. Control of an air-conditioner Use the control panel to turn on/off the air-conditioner

* "load" means electric appliance such as air conditioners, curtains, electric cookers, washers, mini-fans and incandescent lamps.

Product models

1. Mobile panel models: GKB7UIR-3B
GKB7UIR-3DB
GKB7UIR-3A1
2. Receiver models: GKB7U-3B
GKB7U-3B/60
GKB7U-3
GKB7U-3/60
GKB7U-3/3
GKB7U-3/3/60
GKB7U/10
GKB7U/10/60
GKB7U-3C
GKB7U-3E

Designs and specifications are subject to change without further notice.

Please carefully read the instructions before operations.

②

LCD panel GKB7UIR-3B



LCD controller GKB7UIR-3DB



Operation temperature

The operation temperature of the system ranges from 10-60℃. It is recommended not to use the system in places too hot or too cold. It is normal if the LCD is a little fuzzy below 0℃. The operation humidity of the system is below 90℃.

Parameters

1. 2 high-energy alkaline batteries of 1.5V (No. 7) are used for the LCD panel (LCD controller).
2. The maximum load capacity of the receiver:
 - 1) Air conditioner: 10A-16A
 - 2) 1-in-1 receiver: 7A
 - 3) 3-in-1 receiver: 7A
 - 4) Curtain: 10A
 - 5) Dimmer receiver: 2A
(Incandescent lights, fluorescence lights, air conditioners, electric curtains, electric cookers, etc. can be controlled.)
3. Voltage of the receiver: 110V-230V+10%; Frequency: 50Hz/60Hz.
Red wire: wire under voltage; Black wire: zero line; White wire: load line
4. The transmission distance must not be less than 30 meters (in non-open area), and the transmission frequency is 433.9mhz+10ppm.
5. System transmission power: less than 10mw; receiving sensitivity: less than -103dBm

③

Optional elements

1. Master box
2. LCD controller
3. Intel-switch
4. Smart socket
5. Receiver (III)
6. Dimmer receiver
7. Air conditioner receiver
8. Curtain receiver

Accessories

- Plastic hanging plate (1)
- Leather sheath (1)
- Screws (4)
- Dust-proof blind nut (4)
- Instruction manual (1)
- Installation card for service card (1)

Attention

1. Magnetic fields of specific frequencies may affect receiving sensitivity.
2. Signal blind area may appear in some positions and affect receiving sensitivity.
3. Do not shake or knock the product.
4. Do not install the receiver on a metal plate (net or rack, etc), which may affect receiving sensitivity.

Cleaning an LCD screen

Use tools (not attached to the product) for cleaning the surface of LCD screens (such as removing dusts, etc.).

Cleaning the surface of an LCD panel

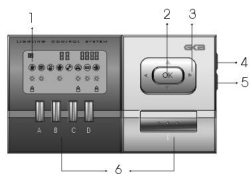
Use a piece of soft cloth with a little water to clean the LCD panel (LCD controller), then wipe it with a piece of dry cloth. Do not use any solvent that may damage the surface coating or the housing.

Notes:

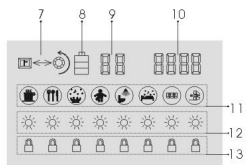
As operations of the panel and the LCD controller are similar, this manual only demonstrates the operations of the panel. However, the operations of the LCD controller will be described when necessary.

④

Outside view of an LCD panel

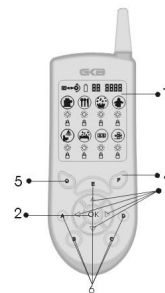


- 1-LCD
- 2-OK key
- 3-Up/down/left/right movement keys
- 4-Full shut down key
- 5-Function key
- 6-Shortcut

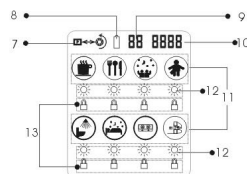


- 7-Password setting pattern
- 8-Quantity of electricity
- 9-Page number
- 10-Password /receiver address code
- 11-Receiver position
- 12-On/off status
- 13-Lock/scene status

Outside view of LCD controller



- 1- LCD
- 2- OK key
- 3- Up/down/left/right movement keys
- 4- Full shut down key
- 5- Function key
- 6- Shortcuts

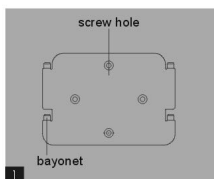


- 7- Password setting pattern
- 8- Quantity of electricity
- 9- Page number
- 10- Password /receiver address code
- 11- Receiver position
- 12- On/off status
- 13- Lock/scene status

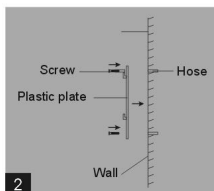
Installing a panel

The panel can be put on a table or mounted on a wall. It has a plastic plate that can be mounted on the wall. Mount the plate and hang the panel on it.

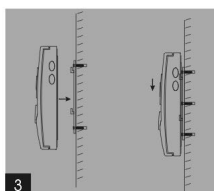
Steps:



1. Drill holes on the wall according to the screw holes on the plastic plate. (Or mount on the Model 86m mounting box.)



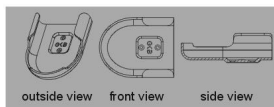
2. Mount the plastic plate on the wall with screws, and put on the dust-proof blind nuts.



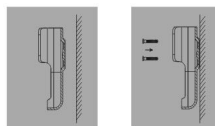
3. Secure the panel on the bayonets of the plastic plates.

Installing a LCD controller

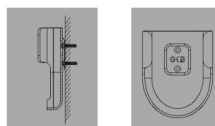
The LCD controller can be put on a table or mounted on a wall. It has a mounting box. Mount the box and insert the control in it.



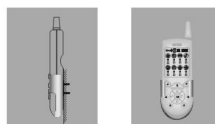
1. Drill holes according to the positions of the screw holes on the iron sheet.



2. Fix the iron sheet on the wall with screws.

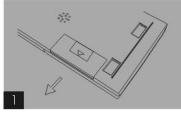


3. Insert the control directly into the mounted box.

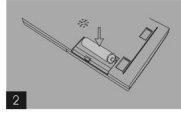


4. Completion of the installation is demonstrated in the pictures.

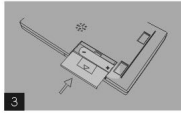
Installing Batteries



1. Slide the battery cover towards the direction as indicated by the arrow, and open it.



2. Put batteries in it. The +/- electrodes of the batteries must correspond to the marks in the battery box.



3. Press the batteries and put back the cover. A click indicates that the battery cover is in place.

Indication of battery volume

indicates insufficient battery volume and the batteries need to be replaced.

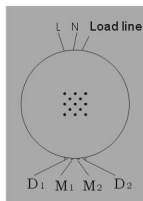
Note:

In order to install the batteries of the LCD controller, refer to the above method and direction marks in the battery box.

Receiver instructions

Notes:

A receiver (1) is exemplified for the instructions, installation and operations of the receiver. Refer to the operation instructions of the receiver and this instruction with respect to other receiver models.



M1 The key to set system codes: set system codes with the panel.

M2 The key to set the receiver code, set receiver codes with the panel.

D1 The red indicator light for setting the system codes

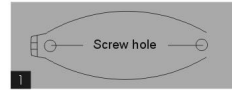
D2 The red indicator light for setting the receiver code

M2+M1 Keys for force start

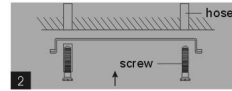
9
LCD panel/LCD controller

Installing a receiver

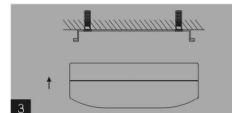
The receiver has a piece of mounting iron sheet. Mount the sheet and connect the power cords. Then rotate the receiver into the sheet.



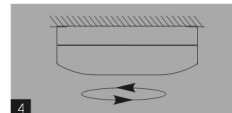
1. Drill holes on the wall according to the screw hole positions on the iron sheet.



2. Mount the iron sheet on the wall with screws.



3. Secure the receiver on the bayonets on the iron sheet.



4. Rotate the receiver clockwise until you hear a click.

10
LCD panel/LCD controller

Note:

The panel is exemplified in the following four pictures. The operation of the LCD controller is similar to the LCD panel.

Before installation, set the system codes and the receiver code first.

The setting is as follows:

System code setting



1. Press the function key, then press .



2. appears and flashes, and appears.



3. Press A again and appears. Now system code numbers can be set.

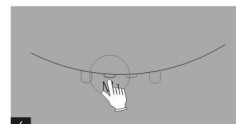


4. Press keys to set a four-digit system code number at your will.

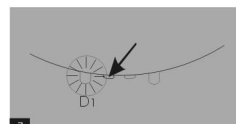
11
LCD panel/LCD controller



5. Press OK, the system codes will be transmitted by the panel.



6. Press M1 (key for all receiver's system code).



7. The corresponding red indicator light flashes. The light will go off if the receiving is over.



8. Press the function key to exit the setting.

Note:

All the panels and receivers in a system can only have one system code. The factory-set system code is , and it must be set again.

12
LCD panel/LCD controller

Receiver code setting



1. Keep pressing the function key and press **OK**.



2. **→** appears and flashes. Now receiver code numbers can be set.



3. **---** appears, the first digit indicates the page number, and the third digits indicate the address code. For instance, a bathroom is indicated as **105**.

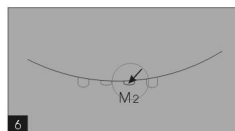


4. Press **←→** to change the latter three-digit number, for setting the receiver code. For instance, **105** is set as **105**, and the receiver will be installed in **105**.

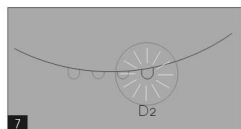
At the moment, the setting of the receiver code has been completed, and it must be sent to the receiver. Steps are as follows:



5. Continue the fourth step above, press **OK**. The signal of the receiver code will be automatically sent into the air.



6. Simultaneously press receiver code M2 of a certain receiver to receive the signal.



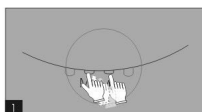
7. The corresponding red indicator light D2 flashes and then goes off, indicating the setting of the receiver code is completed.

8. Press the function key to exit setting.



9. Repeat steps 1-8, set all the receiver codes of the receiver. Do not repeat the receiver codes.

Force start/shut down

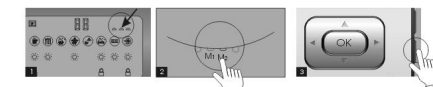


1. Keep pressing M2 of the receiver, and press M1 (system code key), then release the two keys simultaneously. The load is automatically started or shut down by the receiver.

Reading a receiver code



1. Keep pressing the function key and press **▼** key once, then the function is activated.



2. **---** appears on the right upper corner of the panel, indicating the serial number can be read now.
3. Press M2 on the receiver needed to be read.
4. The receiver code of the receiver is displayed on the right upper corner of the panel.
5. Press the function key to exit.

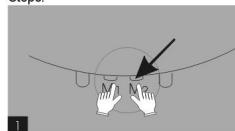
Reading a system code

1. Keep pressing the function key on the panel and press **▼** key, and then the function is activated.
2. **---** appears on the right upper corner of the panel, indicating the system code can be read now.
3. Press M1 of the receiver which needed to be read.
4. The system code (a four-digit number) is displayed on the right upper corner of the panel.
5. Press the function key to exit.

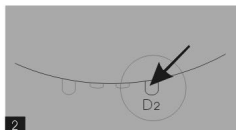
Setting a relay

In an individual application, the receiving effects of a system may be affected by the environment. In this case, you can set any one of the receivers as a relay. All the communication between the panel and receivers can be transmitted through the relay. Steps are as follows: (It is suggested that the receiver to be set as a relay be installed in the center of a house, and only 1 relay can be set.)

Steps:



1. First press M1, and then press M2, then release both of them.



2. The lamp D2 comes on.

3. The setting is completed and the receiver has become a relay.
(Attention: One system can only have one relay.)

Operating instructions

Controlling 8 positions in a page



For instance, to open the lamp in a kid's room.

Steps:



1. Press ◀▶ to go to ☀.



2. ☀ Flashes.



LCD panel/LCD controller



3. Press the OK key.



4. ☀ Under ☀ is on, indicating the lamp has been turned on.



5. Press the OK key again.



6. ☀ Goes off, indicating the lamp has been turned off.

7. In order to control other positions, please repeat steps 1-6.



LCD panel/LCD controller

Control over eight positions

If there are more than 8 positions to be controlled, for instance, 12 positions, the other 4 positions can be set in another page, with 8 in the first page and 4 in the second one. Refer to the above steps 1-6 for controlling 8 positions in a page.

Steps to control the other 4 positions are as follows:



1. Press ▲ to change P1 to P2.



2. To control the four positions in P2, follow the above steps 1-6.



Up to 48 terminals can be controlled via the LCD panel of the system, with 8 in one page and 6 pages totally (P1-P6).



LCD panel/LCD controller

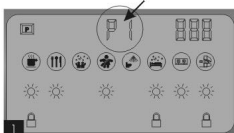
Controlling rooms in multi-floor houses.

For instance, to turn ☀ the lights in, ☀ and ☀ on the first, second and third floor respectively.

Steps:



1. Press ▼ to change the display ☀ to P1 or P2 or P3, all of which indicating the first, second and third page respectively.



2. In the display P1, press ▶ to go to ☀.



3. ☀ Flashes.



LCD panel/LCD controller



4

4. press OK.



5

5. under indicates that the lamp in the living room is has been turned on.

6. repeat steps 1-5 to control lamps in pages 2 and 3.
(Select and this time.)

Five typical scenes can be set with this system.
(For instance: party, reading, dinner, audio-video, romantic time)

Scene setting---Only one lamp in a scene



1

1. First keep pressing the function key, and press .

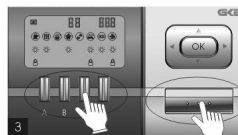


2

2. appears, and release both of the keys.

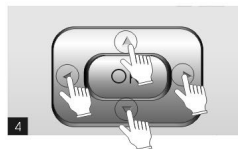
21

LCD panel/LCD controller



3

3. Press any one of A, B, C, D and E.
(For instance, A)



4

4. Press to select a position for storage, for instance the master's room .



5

5. Press OK, and under flashes.

22

LCD panel/LCD controller



6

6. Press the function key to exit, and the setting is completed.

7. The lamps in the master's room can be controlled by the key A.

Scene setting---More than one lamp in a scene

Steps 1-3 are the same with the above ones 1-3. (A is exemplified.)



4

4. Press to select the master's room.



5

5. Press OK, and under flashes.



6

6. Press to select the living room.

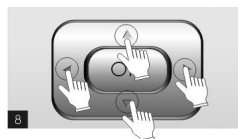
23

LCD panel/LCD controller



7

7. Press OK, and under flashes.



8

8. Press to select the dining room.



9

9. Press OK, and under flashes.



10

10. Press the function key to exit, and the setting is completed.
(The scene is automatically stored.)

11. The lamps in the master's room, the living room and the dining room can be controlled by the A key.

It is suggested that the E key be set as standard. If there are more than one LCD controller panels in the room, set the E key to control the lamp in the same position as the panel. For instance, the E key on the panel in the master's room is set to control the lamp in the master's room. This will make operation more convenient.

24

LCD panel/LCD controller

Shortcut functions

ALL ON/OFF



All loads can be turned on by simultaneously pressing F and ①. (Refer to the picture on the left.). All loads can be shut off by only pressing ①. (Refer to the picture on the right.).

Lock functions



Keep pressing the function key and press OK, then release both of them to lock a certain unit.

25

LCD panel/LCD controller

If the lamp in the living room has been turned on, steps to lock it are as follows:



1. Press ► to move the cursor to ①.



2. Keep pressing the function key and press OK once.



3. ① under ② flashes, indicating that the lamp in the living room has been locked.

26

LCD panel/LCD controller

Dimmer functions



1. Press ▲▼◀▶ key or the scene key to select a position for dimmer control. (The cursor flashes.)



2. Keep pressing ▲ key for over 2 seconds to make the lamp brighter. Release it to stop adjusting.



3. Keep pressing ▼ key for over 2 seconds to make the lamp dimmer. Release it to stop adjusting.

Attention:

The lamp intensity can be adjusted only when the load is turned on.

27

LCD panel/LCD controller

Controlling curtain positions



1. Press ▲▼◀▶ key or the scene key to select a position where curtain need to be open. (The cursor flashes.)



2. Keep pressing ▼ key for over 2 seconds to close the curtain. It will stop moving after releasing the key.



3. Keep pressing ▲ key for over 2 seconds to open the curtain. It will stop moving after releasing the key.

28

LCD panel/LCD controller