

Manual

Basic Information

Product(device) Description: BYD In-vehicle Multimedia Screen

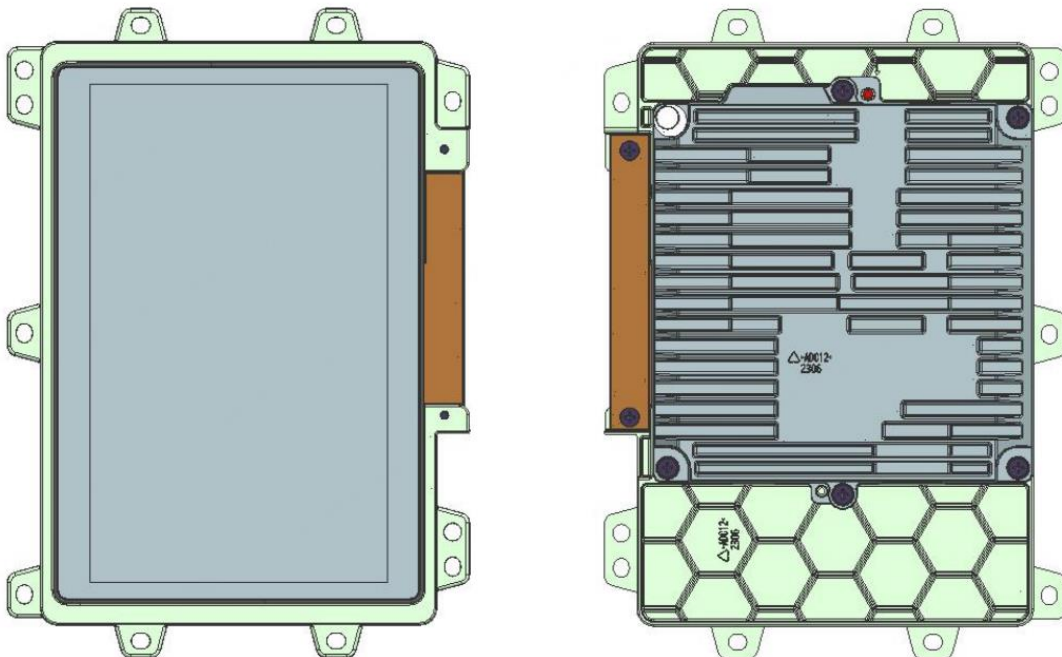
Model No: MTCJ20

Manufacturer: BYD Auto Industry Company Limited

The device is an In-vehicle Multimedia Screen, which is located in the center armrest of the rear seat and can be seen by flipping it open.



Product appearance diagram



Operation

When the vehicle's power supply is in the "ON" gear, the startup screen will be displayed for a few seconds and the system will start working.

After turning it on, you can experience multimedia related functions, including music, settings for air conditioning, seats and car control etc.

In order to better experience multimedia related functions (such as media, music, etc.), use it after connecting to the Internet (after the front row is connected to the Internet, the armrest screen will automatically connect)

After a long period of inactivity, the system will turn off the screen. If you need to use it again after turning off the screen, you can slide the screen to unlock it.

Notice:

- To prevent damage to the touch screen, lightly touch the screen with your hand. If there is no response, remove your finger from the screen and touch it again.
- Do not use detergent when wiping the screen with a soft cloth.

Use the touch screen

- When the display temperature is low, the displayed image may be darker, or the system may operate slightly slower than normal.
- The screen may be dark or difficult to see clearly when wearing sunglasses. Please change the angle at which you look at the screen or take off your sunglasses.
- Touch screen buttons that are grayed out are inoperable.
- Do not use a high-power inverter in the vehicle, as this may cause infotainment system malfunction.
- Do not format or root the device without authorization, as this may cause infotainment system or vehicle malfunction.
- please use the infotainment system according to user's manual.
- It is recommended to contact a BYD authorized dealer or service provider in the event of a failure.

In order to avoid any injury or property damage of the user or other persons, please be sure to read in details and abide the following notice item.

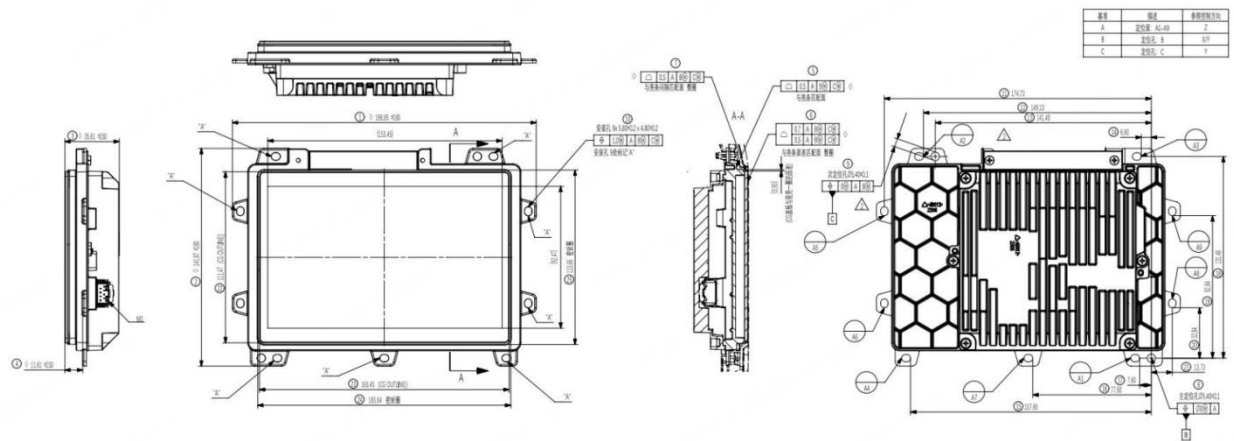
- read the Manual take good care of the Manual for future use.
- to comply with all the warning and notice of this manual.
- to comply with all operating instructions.
- regarding the power supply, please refer what the manual stated .
- the installation and wiring distribution of this product needs specialized skills and experience . To ensure safety, commissioned by professional technicians for installation and wiring.
- there is no any parts attached with the products for user to repair and replace, please ask the professional technician with qualification of maintenance to repair and replace.
- Do not plug any ventilation cooling vents, the local shell holes and other openings are for ventilation of heat. In order to ensure machine works stable and reliable, long service life, not to plug the hole cooling, ventilation environment must be maintained to avoid overheating the machine caused by smoking, Fire other danger.
- heat source should be avoided and products will be not installed on local exposure to direct sunlight, high temperature areas; to be away from heat sources, such as heating, heaters, heat

or have other things

Electrical parameters

No	Spec	Spec
1	Norminal voltage	12VDC
2	Working voltage	9-16VDC
3	Operating temperature	-30°C~70°C
4	Working humidity	40%~93%
5	Atmospheric pressure	50Kpa~106Kpa

Dimensions



Wi-Fi Technical specification

1. **Radio Frequency:** 2.412-2.472GHz, 5.18-5.32GHz, 5.50-5.72GHz, 5.745-5.825GHz;

Modulation:

2.4GHz Wi-Fi: 802.11b, 802.11g, 802.11n;

5GHz Wi-Fi: 802.11a, 802.11n, 802.11ac

2. **Declared RF Output power (EU)**

2.4GHz Wi-Fi: 802.11b:17dBm, 802.11g:17dBm, 802.11n:16dBm;

5GHz Wi-Fi (band 1-3):

802.11a:20dBm, 802.11n(HT20):20dBm, 802.11n(HT40):20dBm,

802.11ac(VHT20):20dBm, 802.11ac(VHT40):20dBm, 802.11ac(VHT80):20dBm

5GHz Wi-Fi (band 4):

802.11a:14dBm, 802.11n(HT20):14dBm, 802.11n(HT40):14dBm,

802.11ac(VHT20):14dBm, 802.11ac(VHT40):14dBm, 802.11ac(VHT80):14dBm

Restrictions:

In all EU member states, 5 250-5 350MHz - Indoor use: inside buildings only.

*5470-5 725MHz-Indoor and outdoor use. Installations in road vehicles are permitted only for WAS/RLANs devices operating in slave mode controlled by a fixed WAS/RLANs device with Dynamic Frequency Selection (DFS) functionality operating in master mode.

EU



Your vehicle has different types of radio equipment. The manufacturers of the radio equipment declare the RF Modules listed above have been evaluated against the essential requirements and other relevant provisions of Directive 2014/53/EU. The full text of the Declaration of Conformity can be found at the following Internet address:

<https://cn-prod.byd.com/eu/eu-doc>

The devices listed above comply with Part 15 of the FCC rules and Industry Canada's license-exempt RSS Standard(s).

FCC and ISED Statement

FCC+ISED

This device complies with Part 15 of the FCC Rules [and contains license-exempt transmitter(s)/receiver(s) that comply with Innovation, Science and Economic Development Canada's licence-exempt RSS standard(s)].

Operation is subject to the following two conditions:

- (1) This device may not cause harmful interference, and
- (2) This device must accept any interference received, including interference that may cause undesired operation of the device.

L'émetteur/récepteur exempt de licence contenu dans le présent appareil est conforme aux CNR d'Innovation, Sciences et Développement économique Canada applicables aux appareils radio exempts de licence.

L'exploitation est autorisée aux deux conditions suivantes:

- (1) l'appareil ne doit pas produire de brouillage, et
- (2) l'appareil doit accepter tout brouillage radioélectrique subi, même si le brouillage est susceptible d'en compromettre le fonctionnement.

Radiation Exposure Statement

FCC Radiation Exposure Statement

In case this equipment has to subject to FCC SAR (Specific Absorption Rate) exposure test, this equipment is designed to meet the requirements for exposure to radio waves established by the FCC. These requirements set a SAR limit of 1.6 W/kg averaged over one gram of tissue. The highest SAR value reported under this standard during product certification for use when properly worn on the body or on the head, with no separation.

This equipment has been tested and found to comply with the limits for a Class B digital device, pursuant to Part 15 of the FCC Rules. These limits are designed to provide reasonable protection against harmful interference in a residential installation. This equipment generates, uses and can radiate radio frequency energy and, if not installed and used in accordance with the instructions, may cause harmful interference to radio communications. However, there is no guarantee that interference will not occur in a particular installation. If this equipment does cause harmful interference to radio or television reception, which can be determined by turning the equipment off and on, the user is encouraged to try to correct the interference by one or more of the following measures:

- Reorient or relocate the receiving antenna.
- Increase the separation between the equipment and receiver.
- Connect the equipment into an outlet on a circuit different from that to which the receiver is connected.
- Consult the dealer or an experienced radio/TV technician for help.

CAUTION: This equipment and its antennas must not be co-located or operated with another antenna or transmitter.

Changes or modifications not expressly approved by the party responsible for compliance could void your authority to operate the equipment.