

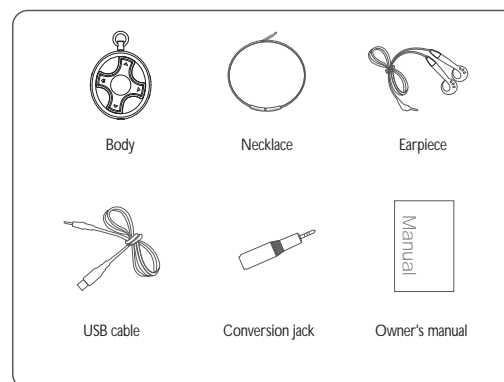
# Before using the product

## 1. Product characteristics

The product's pendant design and included necklace makes it the first fashionable technology. The built-in Li-ion power source saves time and money by negating the need to purchase additional batteries. The product's ergonomic interface simplifies MP-3 playback by eliminating unnecessary complex commands.

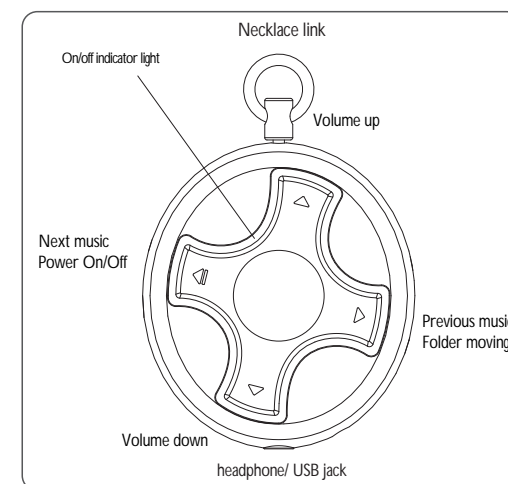
- Modernistic design and breathtaking small size
- Up to 15 hours of continuous play
- Simple to use
- 5 mode equalizer (general/pop/jazz/classical/rock)
- Unlimited file creation within memory capacity
- Removable disk
- Firmware upgrades
- Changeable deco plates for player customization

## 2. Included with the purchase



\* DC adapter (DC 4.5/5V) sold separately.

## 3. Part Nomenclature



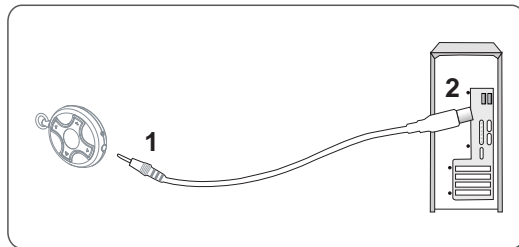
\* Some functions, such as turning on your product require you to hold down the button for 1 second. Other functions, such as skipping forward, only require that you press the button and immediately release it.

\* To enjoy your product to the fullest adhere to the product directions

## Connecting to the PC

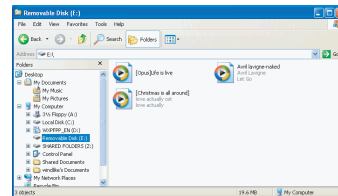
### 1. Connecting your product to the PC via USB

- 1) Connect the slender end of the provided cable to the l'UOVO's headphone jack.
- 2) Place the USB end of the provided cable into an empty USB slot on your PC. (Picture 1.)



### 2-1. Windows ME/2000/XP users :

Windows ME/2000/XP operating systems recognize this product as a removable disk via plug and play.



(Picture 2.)

### 2-2. Windows 98SE(Second Edition) users :

Windows 98SE will not recognize removable disks without installing a driver. Please visit [www.station-z.com](http://www.station-z.com) to learn more about driver installation. This product does not support Windows system prior to Windows 98 SE.

### 3. Connection confirmation

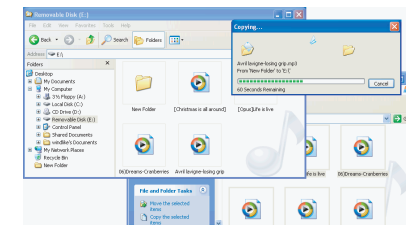
To ensure that a correct connection has been established, view your computer's drives (view "My Computer" for Windows 98SE/ME/2000/XP). If the connection is online, the product will be represented as a new removable disk. The recognition process can take anywhere from several seconds, up to a minute depending on your computer's resources.

## Copying files

### 1. Copying Music files

The product is recognized as a removable disk by your PC. The file transfer process is similar to copying files to a floppy drive or saving files in the hard drive. Highlight the files you would like to place onto your product, then drag and drop them to the removable disk dialog box (Picture 3). Organizing files may be simplified by categorizing music into file folders by music genre, or performer.

\* Caution : only music files MPEG 1/2/2.5 Audio layer 3 are supported for playback (\* .mp3)



(Picture 3.)

### 2. Copying general data files

Your product can also store electronic media. Follow the same process as outlined above to transfer files to your product.

**\* Always keep a copy of original files separate from your product to ensure no loss of data.**

# Charging

## 1. Re-charging the product with PC

- 1) Connect the product to the PC as shown in (Picture 1.)
- 2) Once the connection has been established your product will begin charging. If the battery is completely drained, it will take 3 hours to fully charge the product again.

### When to charge

Recharge the product when the built-in LED light flashes red while in operation. This is the low battery indicator.

### Charging level indicator

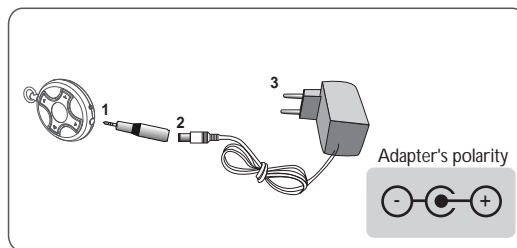
When your product is completely charged the built-in LED light will change from red to white.

### Problems charging

If the built-in LED light flashes blue while attempting to re-charge, simply disconnect the product, and wait a few moments before re-connecting the player again. If this issue persists call for service.

*\* Your product will not be fully charged at the time of purchase, please charge it fully before use for best performance.*

## 2. Charging the product with the optional 4.5~5V DC adapter



(Picture 4.)

- 1) Connect the included conversion jack to the headphone jack of the product
- 2) Connect the end of the DC wall adaptor to the conversion jack inserted into the product
- 3) Connect the DC wall adaptor to an electrical outlet.

*\* Caution : Do not forget to check the DC wall adapter's polarity. Use of opposite polarity may cause damage to the product.*

## Product Warranty

1. This product was made under strict engineering and quality requirements ; every unit receives a quality assurance analysis before release to the consumer.
2. If your product becomes defective during the warranty period, contact StationZ's service center, or place of purchase, to correct the issue free of charge.
3. The following is not covered under the warranty :
  - Damage caused by misuse or carelessness.
  - Damage caused by the user modifying the product.
  - Damage caused by natural catastrophe (fire, earthquake, floods).
4. For repair service : Provide a copy of your warranty card to the service center ; it will not be re-issued.
5. The warranty is void without the Product warranty card ; keep it in a safe place.
6. The warranty card is only applicable for domestic purchases.

Product name		Digital Audio Player		
Model		it MMZ-300		
Manufacture No.				
Warranty period		90 days		
Manu- facture	Name	StationZ Co., Ltd.	Phone	503-906-7868
	Address	3F, Duckyoung B/D, 1357-7, Secho-dong Seocho-gu Seoul South KOREA		

- Customer Service : 12725 Millikan Way STE 328 Beaverton OR 97005, U.S.A.
- E-mail Technical Questions or Customer Service : support@staion-z.com

## Using your product

### 1. Listening to the music

#### - Turn on the Power/Play

With the headphones plugged in, press the **⏻** button for over 1 second. The power will turn on, indicated by the LED light. If supported files are present, music will begin playing after a beeping sound is heard.

#### - Power off

Press the **⏻** button to stop music playback. Pressing **⏻** for more than one second will stop playback after a beeping sound, and the product will automatically power off. Alternatively, you may power the unit off by removing the headphone jack.

#### - Stop

Pressing the center button (logo) for more than one second while the product is powered on will stop the present song .

#### - Moving to the next song

Pressing the **⏭** button while the product is powered on will start the next song in queue followed by two beeping sounds.

#### - Moving to the previous song

Pressing the **⏮** button within 10 seconds from the beginning of the current track will revert playback to the previous song followed by two beeping sounds.

#### - Going to the beginning of a song being played

Pressing the **⏮** button after 10 seconds of playback will restart the current track from its beginning followed by two beeping sounds.

### 2. Moving to other folder

During playback, pressing the **▶** button for over 1 second will stop the current song, move playback to the next folder, and play selected folder's first track. If no folders are present, the product will replay the first song in queue.

### 3. Volume control

#### - Increasing the volume

Pressing Volume **▲** button while a song is playing will gradually increase the volume.

#### - Lowering the volume

Pressing Volume **▼** button while a song is playing gradually will lower the volume.

### 4. Equalizer (EQ) control

When the **⏮** **▲** two button is pressed at the same time , the equalizer will change according to the following table's sequence followed by two beeping sounds. The changes of the EQ are reflected by the LED light's color.

EQ	General	Pop	Jazz	Classical	Rock
Color	All	Yellow	Blue	Orange	Red

## Trouble shooting

### 4. Equalizer (EQ)

When the ◀ ▶ two button is pressed at the same time for 1 second, the equalizer will intialized by two beeping sounds.

### 5. Indicator light interval change

When the ▲ ▼ two button is pressed at the same time for 1 second, indicator light interval will change according to the following table's sequence followed by two beeping sounds.

1 Level	-	2 Level	-	3 Level	-	4 Level	-	5 Level	-	6 Level
Short		Nomal		Long		Light off				

### 5. Indicator light blink pattern change

When the ▶ ▼ two button is pressed at the same time for 1 second, indicator light pattern will change.

#### Water damage :

If your product gets dropped into water : Stop using immediately → Disconnect the headphone jack → Position the headphone jack to allow the liquid to drain out → Contact the service center.

#### No Music Playback :

Check the volume level → Make sure that the files inside the product are supported for playback (\*.mp3) → Ensure that the battery is charged

#### The battery does not charge :

Ensure that the connection is correct on both ends of the USB cable. Ensure that the USB port on your PC is working properly.

#### The indicator light does not change to white after a 2 hour charge :

Discontinue charging immediately → Wait a few moments and attempt to charge your product again → If the problem persists, contact the service center.

## Specifications

Section	Details	Contents
Audio	No. of channels	Stereo (L + R)
	Frequency range	20Hz ~ 20KHz
	Earpiece output	10mW(R) + 10mW(L) : 16
	S/N Ratio	95 dB (MP3)
Operating System	Windows	98SE/Me/2000/XP
File support	Support format	MPEG-1/2/2.5 Audio Layer3
General	Power	Li-ion (3.7V) Inside battery, USB power
	Outside input/output	Outside power 4.5~5V (charger DC adapter)
	Play duration	2.5 Ø standard stereo earpiece (for USB/Audio)
	Equalizer	128 kbps MP3 file standard approx. 15 continuous play (it can slightly change with music type and volume)
	Removable disk	5 modes - general / pop / jazz / classic / rock
	Size (mm)	USB 1.1
	Weight (g)	Approx. 36(L) x 40(H) x 11 (D)mm
Parts	Material	15g (including battery)
		Aluminum / Plastic
	Standard packaging	Main body, necklace, earpiece, USB communication/recharge cable, charger conversion jack, owner's manual
	Optional	Charger DC Adapter (sold separately)

## Precautions

**\* To maintain proper performance, do not place your product :**

- In environments over 104 degrees Fahrenheit.
- In direct sunlight for extended periods of time.
- In excessively humid environments.
- In dusty places.

**\* To ensure the longevity of your product .**

- Do not slam, hit, or drop the product.
- Do not disassemble the product.
- Do not insert any foreign objects into the product.
- Do not place the product into your mouth.

**\* When using the headphones :**

- To avoid hearing loss, do not listen to music at the maximum volume.
- Do not wear headphones while driving a motor vehicle or riding a bicycle.
- Avoid placing yourself in danger by using the headphones in environments where your hearing is important to safety.

**\* Some USB hubs do not recognize the product.**

**\* Disassembling and reassembling your product will void the warranty and might lead to product damage.**

## it Owner's Manual

For questions and information regarding this product

visit <http://www.station-z.com>

## FCC Compliance Statements

Note: This equipment has been tested and found to comply with the limits for a Class B digital device, pursuant to part 15 of the FCC Rules. These limits are designed to provide reasonable protection against harmful interference in a residential installation. This equipment generates, uses and can radiate radio frequency energy and, if not installed and used in accordance with the instructions, may cause harmful interference to radio communications. However, there is no guarantee that interference will not occur in a particular installation. If this equipment does cause harmful interference to radio or television reception, which can be determined by turning the equipment off and on, the user is encouraged to try to correct the interference by one or more of the following measures:

- Reorient or relocate the receiving antenna
- Increase the separation between the equipment and receiver.
- Connect the equipment into an outlet on a circuit different from that to which the receiver is connected.
- Consult the dealer or an experienced radio / TV technician for help.

Warning : Your are cautioned that any change or modifications to the equipment not expressly approved by the party responsible for compliance could void your authority to operate such equipment.