

# ***Tire Pressure Monitoring System***

***TAG-READER Tire Pressure Monitoring System for Mining Trucks  
MODEL K61x series***

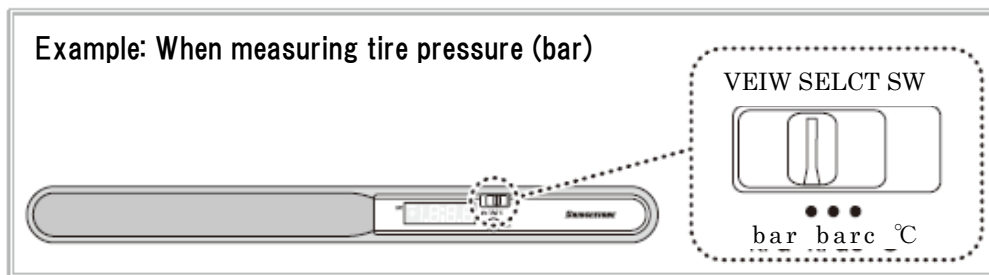
## ***User's Manual***

## ◆ How to measure

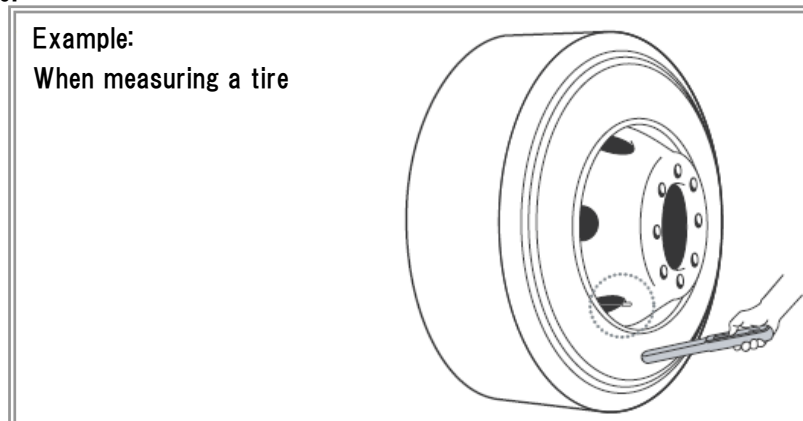
To measure tire pressure or inside air temperature, press the reader's antenna gently against the side wall near the valve of the tire that you want to measure and then press the MEASURE button. Using the TAG-READER, you can measure the following three data items.

ITEM	VIEW ITEM SELECT	Explanation
Pressure	bar	Displays tire pressure in 0.05bar increments.
Compensated pressure	barc	Compensated pressure.
Temperature	°C	Displays inside air temperature in 1°C increments.

- ① Set the VIEW ITEM SELECT switch to the item that you want to measure.

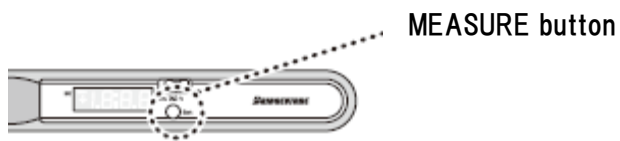


- ② Press the reader's antenna gently against the side wall near the valve of the tire that you want to measure.



- Be careful not to touch the antenna against metal such as wheels. Otherwise, radio waves from the sensor will be blocked and data transmission will fail.

- ③ Press the MEASURE button.



- Data measurement starts when the MEASURE button is clicked.
- Data measurement takes place only once after the button is clicked. Pressing and holding the button again will have no influence.

- ④ Data are sent from the sensor on the tire to the TAG-READER.

- ⑤ When data transmission is completed, a short beep sounds twice and the received data are displayed on the LCD.

If data transmission is not successful, a long beep sounds and the “try” (data reception error) message is displayed on the LCD. Press the MEASURE button again to measure data while ensuring that:

- The tip of the antenna is away from the wheel and other metal parts.



”try” message (data reception error)

- ⑥ To view other items, set the VIEW ITEM SELECT switch to the corresponding positions.

- ⑦ Repeat steps ② and onward to measure the remaining tires or measure the same tire again.

◆ How to monitor the data on PDA screen:

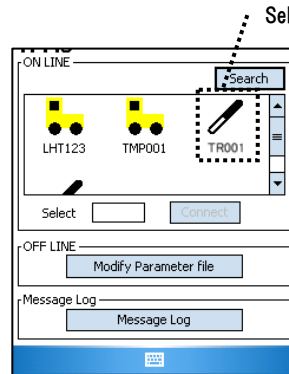
- ① Power on TAG-READER and PDA
- ② Start the application “Tire Data Monitor” on PDA
- ③ Select TAG-READER on screen on “Tire Data Monitor”.

PDA and TAG-READER are connected by wireless.

You can monitor the tire data on PDA screen.



Click : Start the application



	Temp [C]	Meas. Press [psi]	Target Press [psi]	Time by ECU
P1	81	110	116	14:14
P2	62	91	105	14:13
P3	63	109	117	14:15
P4	66	108	118	14:12
P5	58	105	114	14:16
P6	59	110	115	14:13

Tire data

◆ How to charge the batteries:

- ① Insert the connector of charger into the charger slot of TAG-READER.
- ② Please remove the connector when the color of LED changes from red to green.

◆ How to remove the batteries:

- ① Using the screwdriver supplied with the TAG-READER, loosen and remove the battery lid retaining screw.
- ② Pull up the lid on the strap side and remove it.
- ③ Remove the batteries.
- ④ Install the battery lid.

## ※ CAUTION

Failure to observe the following may lead to a short circuit or charging, causing the battery to start leaking or generate extreme heat, or the battery may even start a fire or explode.

- Do not throw batteries into a fire. Do not heat or disassemble batteries.
- Do not use a combination of new and old batteries, or a combination of batteries of different makes or types.
- Ensure that the polarity of the batteries is not reversed.
- Always use the specified batteries. Otherwise, the TAG-READER may fail.
- Never attempt to disassemble or modify the TAG-READER.
- Do not handle the TAG-READER with wet hands. Keep the product away from water.
- Always use the specified batteries (AAA dry (including rechargeable) battery).
- Be careful not to drop or step on the TAG-READER, or hit it against a hard object.
- Turn off the power before removing the batteries from the TAG-READER. Be careful not to press the MEASURE button while removing the batteries. Otherwise, the TAG-READER may fail.
- Do not leave the TAG-READER in places of severe temperature change or outside the specified storage temperature range.
- Remove the batteries from the TAG-READER if it will not be used for an extended period. Otherwise, the batteries may start leaking, damaging the TAG-READER.
- TAG-READER is connected to AC-adaptor for battery charge, however, TAG-READER is usually used in the mine. So that we consider it will not be used with AC-adaptor during intended use.

## Notices for using in USA

This device complies with Part 15 of the FCC Rules and IC RSS-Gen. Operation is subject to the following two conditions: (1) This device may not cause harmful interference, and (2) this device must accept any interference received, including interference that may cause undesired operation.

This equipment has been tested and found to comply with the limits for a Class B digital device, pursuant to Part 15 of the FCC Rules and IC RSS-Gen.

These limits are designed to provide reasonable protection against harmful interference in a residential installation. This equipment generates use and can radiate radio frequency energy and, if not installed and used in accordance with instructions, may cause harmful interference to radio communications. However, there is no guarantee that interference will not occur in a particular installation. If this equipment does cause harmful interference to radio or television reception, which can be determined by turning the equipment off and on, the user is encouraged to correct the interference by one or more of the following measures:

- Reorient or relocate the receiving antenna.
- Increase the separation between the equipment and receiver.
- Connect the equipment into an outlet on a circuit different from that to which the receiver is connected.
- Consult the dealer or an experienced radio/TV technician for help.

### **WARNING**



Changes or modifications not expressly approved by the manufacturer for compliance could void the user's authority to operate the equipment.

**This transmitter must not be co-located or operated in conjunction with any other antenna or transmitter.**

This equipment complies with FCC radiation exposure limits set forth for uncontrolled equipment and meets the FCC radio frequency (RF) Exposure Guidelines in Supplement C to OET65. This equipment has very low levels of RF energy that it deemed to comply without maximum permissive exposure evaluation (MPE). But it is desirable that it should be installed and operated with at least 20cm and more between the radiator and person's body (excluding extremities: hands, wrists, feet and ankles).