

## What's in the box

Mee-M100 Multimedia Player  
Micro USB Cable  
USB Power Adapter  
Remote Control Receiver  
Remote Control  
Installation Guide

## Installation

1. Connect the micro USB cable to the multimedia player.
2. Connect the other end of the micro USB cable to the USB power adapter and plug the adapter into outlet.
3. Connect the multimedia player to your TV through the HDMI port.
4. Connect the remote control receiver to USB port. Or connect the USB hub to USB port then connect the remote control receiver to USB hub.
5. Select the correct TV input source for your TV via TV's remote control.
6. Main screen displays on your TV and use the remote control to control the multimedia player.

## Settings - Wi-Fi Network and Language

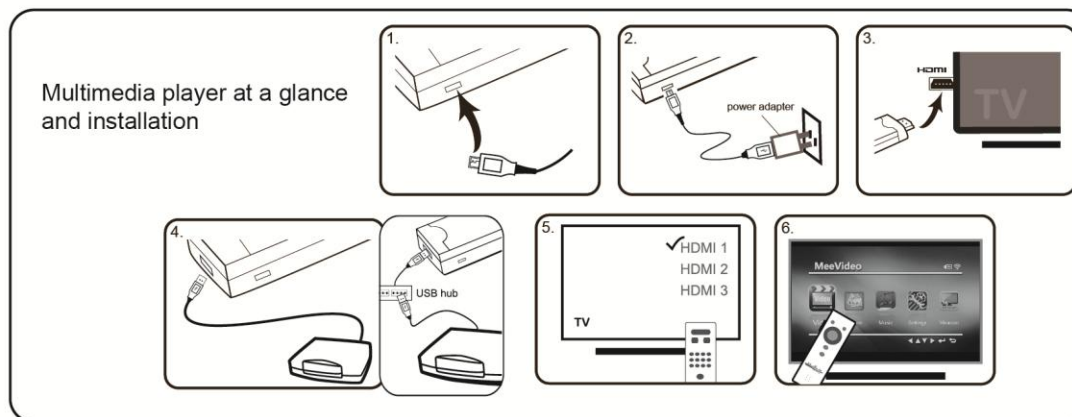
\*Hit the return button on remote control to go back to main screen.

### Wi-Fi Network

1. When the multimedia player is not connected to Wi-Fi network, the question mark in the upper right corner will show up on the screen. After the multimedia player homepage displays on TV, select Settings.
2. Select Network.
3. Select the same wireless network for both your mobile devices and the multimedia player. Enter the password (if you use one).
4. When the multimedia player is successfully connected to Wi-Fi network, the Wi-Fi symbol in the upper right corner and the name of Wi-Fi network in the lower left corner both will show up on the screen.

\* The multimedia player will auto memorize the last Wi-Fi connection.  
If you use a new Wi-Fi router, please reset the Wi-Fi network settings.

Multimedia player at a glance and installation



### Language

1. Select Settings.
2. Select Language and select your desired language.

### Miracast

1. Select Miracast
2. Ready for Miracast.
3. After the mobile device connecting to the Wi-Fi network, select Display > Wireless display.

*\*Please read your mobile device's user's manual before you start using the Miracast.*

4. The mobile device will detect the usable devices and please select your desired device.
5. After connecting, the mobile device and your TV work synchronously.

*\*If you don't want the mobile device and the screen to stay synchronized, select the Disconnect icon. If you want to use the Miracast function again, please go back to main screen and select Miracast.*

### Mobile Playback

#### Android:

By default, the multimedia player is set to play immediately through DLNA. For Android devices, users will need to download the MeeVideo app from the Google Play Store in order to stream content from mobile devices. We also highly recommend downloading the iMediaShare app from the Play Store.

#### iOS:

By default, the multimedia player is set to play immediately through AirPlay. For iOS devices, users will need to download the MeeVideo app from the App store in order to stream content from mobile devices. We also highly recommend

downloading the iMediaShare app from the App Store.

### Troubleshooting

No display on screen after connecting the multimedia player to your TV?

Make sure your TV supports 720p/1080p.

Check if the HDMI cable is connected to the multimedia player and to your TV.

Look at the ports on the back of your TV to make sure you have the correct TV input source.

No Wi-Fi connection on multimedia player?

Make sure that your mobile devices and the multimedia player share the same Wi-Fi network.

Make sure the Wi-Fi on your mobile devices is on.

Use a Wi-Fi router that supports 802.11 b/g/n.

Laggy screen and crackling sounds?

Make sure that you use at least 8MB/s wireless router and the multimedia player is close to the wireless router.

No display on screen after connecting the USB flash drive or external hard drive to your USB hub?

Use the USB hub with power adapter.

More information >> <http://www.meeboss.com>



\*All brand names and trademarks are properties of their respective owners.

\*FCC Regulations:

§ 15.19 (a)(3)

This device complies with part 15 of the FCC Rules. Operation is subject to the following two conditions: (1) This device may not cause harmful interference, and (2) this device must accept any interference received, including interference that may cause undesired operation.

§ 15.21

Changes or modifications not expressly approved by the party responsible for compliance could void the user's authority to operate the equipment.

§ 15.105 (b)

This equipment has been tested and found to comply with the limits for a Class B digital device, pursuant to part 15 of the FCC Rules. These limits are designed to provide reasonable protection against harmful interference in a residential installation. This equipment generates, uses and can radiate radio frequency energy and, if not installed and used in accordance with the instructions, may cause harmful interference to radio communications. However, there is no guarantee that interference will not occur in a particular installation. If this equipment does cause harmful interference to radio or television reception, which can be determined by turning the equipment off and on, the user is encouraged to try to correct the interference by one or more of the following measures:  
—Reorient or relocate the receiving antenna.  
—Increase the separation between the equipment and receiver.  
—Connect the equipment into an outlet on a circuit different from that to which the receiver is connected.  
—Consult the dealer or an experienced radio/TV technician for help.

RF Exposure Information (MPE)

This equipment complies with radio frequency (RF) exposure limits adopted by the Federal Communications Commission for an uncontrolled environment. This equipment should be installed and operated with minimum distance 20 cm between the radiator & your body.



MeeBoss  
simply sharing