

How to install EasyGo

System Requirements

CPU	Intel Celeron 333 Mhz and higher
Memory	64Mb or higher recommended
Hard Drive	20Mb or higher
CD-ROM	8× or higher
Display	800×600 dot and higher recommended
Interface	USB
OS	Windows 98 SE / Windows ME / Windows 2000 / Windows XP

* The following USB controllers haven't been tested, so they may not work with EasyGo.

- Compaq PCI-to-USB Open host controller
- NEC Open HCD controller

EasyGo Sensor Specification

How Install	Fingerprint Verification Accuracy* *(In-house rating)	FAR 0.0001% FRR 0.01%
	Interface	USB1.1 (USB self-powered hub)
	Power (USB Port)	5V
	Power consumption	MAX 130 mA MIN 80 mA
	Environment	Temperature - 10°C ~ + 40°C (Avoid freezing) Humidity 0% ~ + 80%
	Environment to keep	Temperature - 20°C ~ + 60°C (Avoid freezing) Humidity 20% ~ + 80%
	Shape	82×39×41 mm (Not including a cable)
	Weight	105 g

Sensor

Cautions before the installation :

You must install the sensor first before plugging it in.

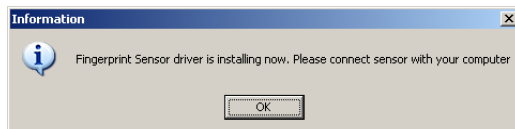
You must have administrator rights to install.

1. Click "Install Sensor" button.



Pic 1

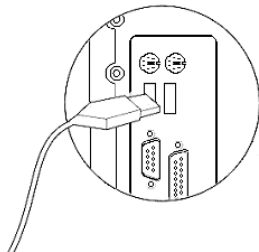
The message below (See Pic 2) comes up after the installation.



Pic 2

2. Please plug in the EasyGo sensor. (See Pic 3)

Your computer will recognize the EasyGo sensor and installation will be completed.



Pic 3

3. Please select the "EasyGo Installation" button.



Pic 4

4. Please register a user's fingerprints.

Caution : You must register at least 2 fingers, otherwise, you may not be able to logon to your computer when you get a problem with the registered finger.



Pic 5

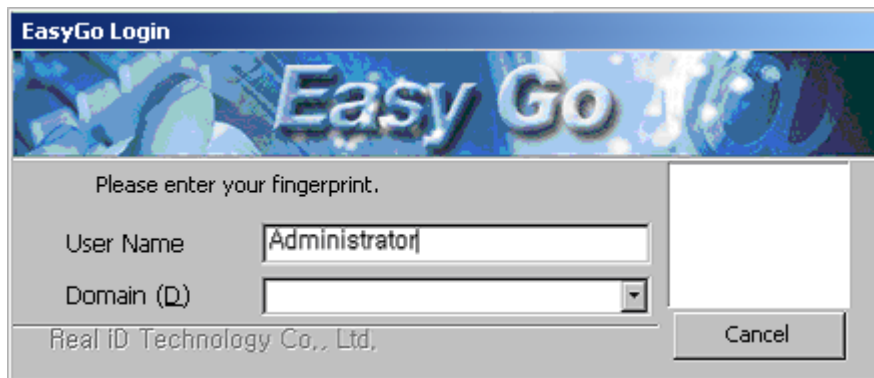
You can start using EasyGo after completing the user registration and restarting the computer.

EasyGo User Manual

Login to Windows

Please enter your “User Name”, “Password”, and “*Domain” in the Logon Authentication window (See Pic 6), then place your finger on the sensor.

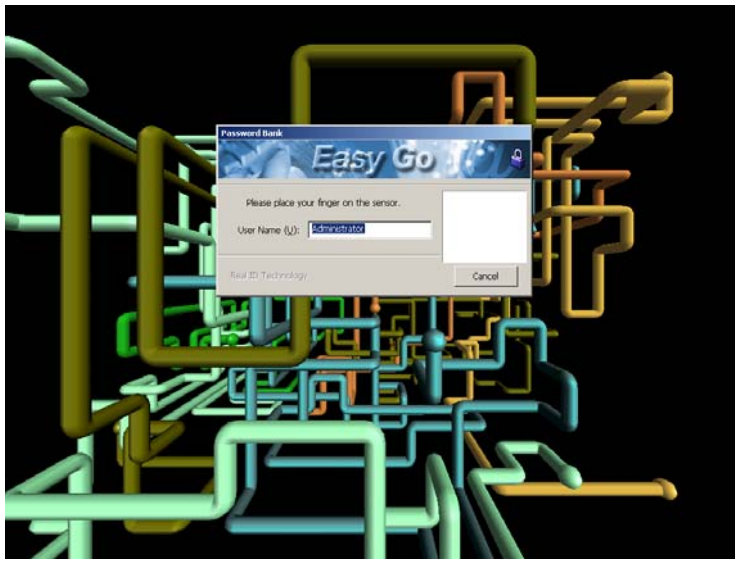
* If you do not have a Domain, you do not have to enter the “Domain”.



Pic 6

Lock the Computer and with the Screen Saver and Computer

When you start the screen saver lock, you can unlock the screen saver with the fingerprint authentication.

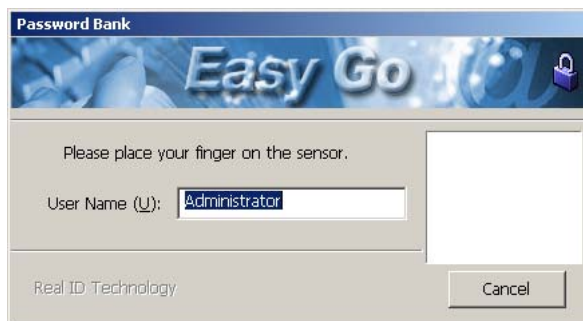


Pic 7

Encrypt Files/Folders

When you right click a file or a folder in Explorer, you see “Encrypt (Decrypt) File/Folder” on the menu.

When you select the menu, it’ll encrypt (decrypt) a file/folder after the fingerprint authentication.

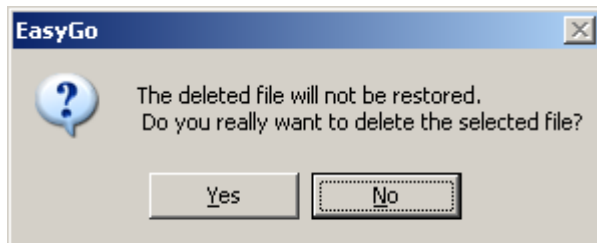


Pic 8

Shredder Feature

Caution : The shredder feature will delete a file completely, so that you cannot recover the file.

When you click 「Yes」 , the shredder will start after the user authentication.



Pic 9

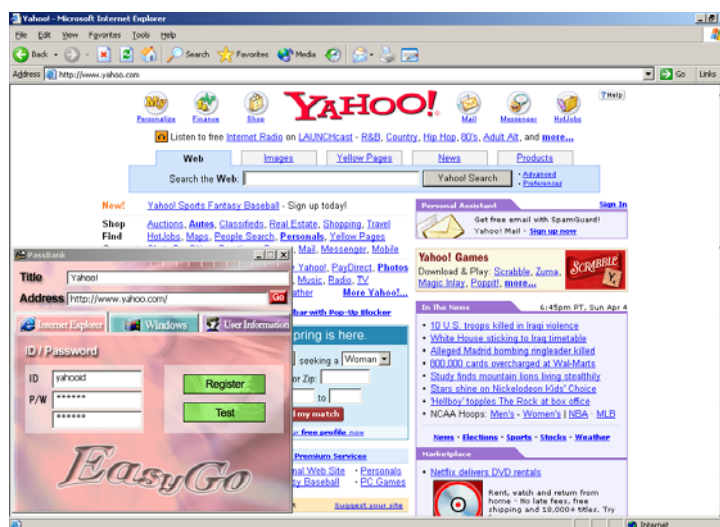
Password Bank

Password Bank is a program that allows you to logon to secure web sites or applications with your fingerprint instead of your ID and password once you register in Password Bank.

Password Bank consists of 3 tabs: Internet Explorer tab to register the login information for secure sites, Windows tab to limit the access to applications, and User Information tab to maintain the user IDs and passwords.

<For Internet Explorer>

To register your ID and password for Internet Explorer, when you are at a secure web site and open the Password Bank, then enter your ID and password and click “Register”.



Pic 10

<Windows Applications>

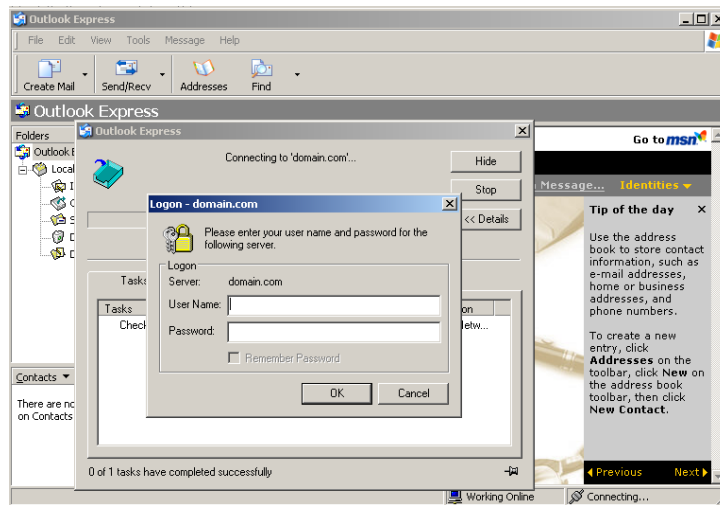
To register for Windows applications, follow the procedure below.

- ① Enter **ID** and **Password** in the Windows tab in the Password Bank.
- ② Drag and drop the icon from the ID textbox to the ID textbox on the window.
- ③ You must fill in the **ETC** textbox only for the cases below:
 - When you only enter either **ID** or **Password**, but not both.
 - When you register the application with a duplicate name.

Drag and drop the icon from the ETC textbox to the textbox in the registration window to register.

⊗ Be careful not to drag and drop **ETC** to **ID**, **Password**, and the main window.

④ Registration will be completed by clicking “**Register**” button.



Pic 11



Pic 12

FCC Information

This device complies with Part 15 of the FCC Rules. Operation is subject to the following two conditions:

- (1) This Device may not cause harmful interface, and
- (2) This device must accept any interference received, including interference that may cause undesired operation.

Note: This equipment has been tested and found to comply with the limits for CLASS B digital device, pursuant to Part 15 of FCC Rules. These limits are designed to provide reasonable protection against harmful interference when the equipment is operated in a commercial environment. This equipment generates, uses and can radiate radio frequency energy and, if not installed and used in accordance with the instructions, may cause harmful interference to radio communications. However, there is no guarantee that interference will not occur in a particular installation. If this equipment does cause harmful interference to radio or television reception, which can be determined by turning the equipment off and on, the user is encouraged to try correct the interference by one or more of the following measures:

- 1.1. Reorient or relocate the receiving antenna.
- 1.2. Increase the separation between the equipment and receiver.
- 1.3. Connect the equipment into an outlet on a circuit different from that to which receiver is connected.
- 1.4. Consult the dealer or experienced radio/TV technician for help.

WARNING

Changes or modifications not expressly approved by the manufacturer could void the user's authority to operate the equipment.