

## Internal Photos

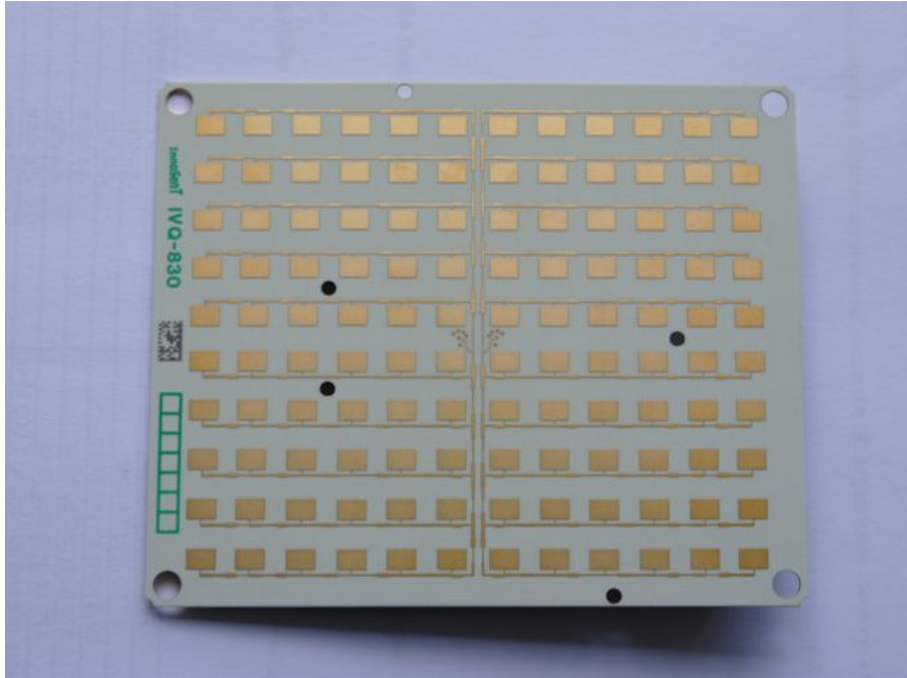


Figure 1: RF Board, antenna side

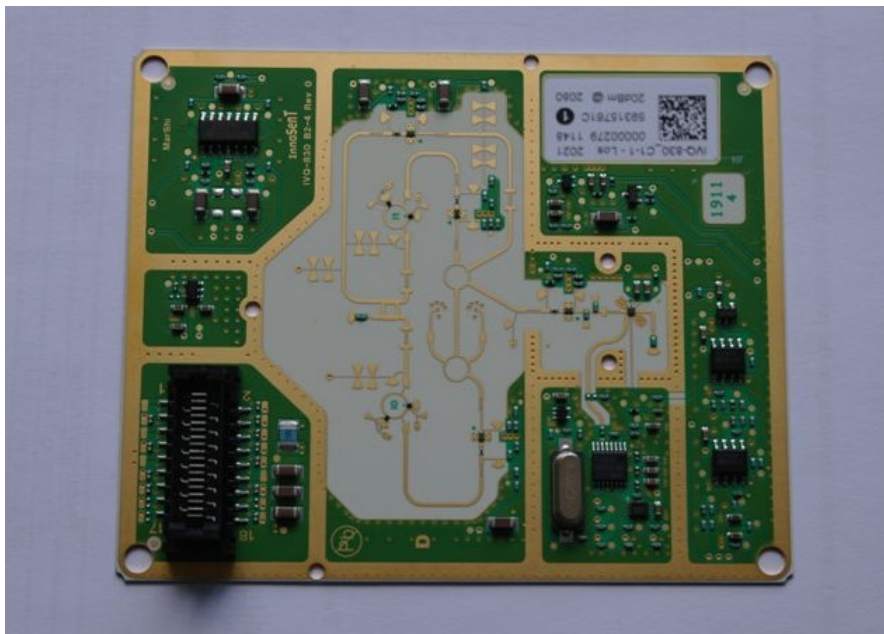
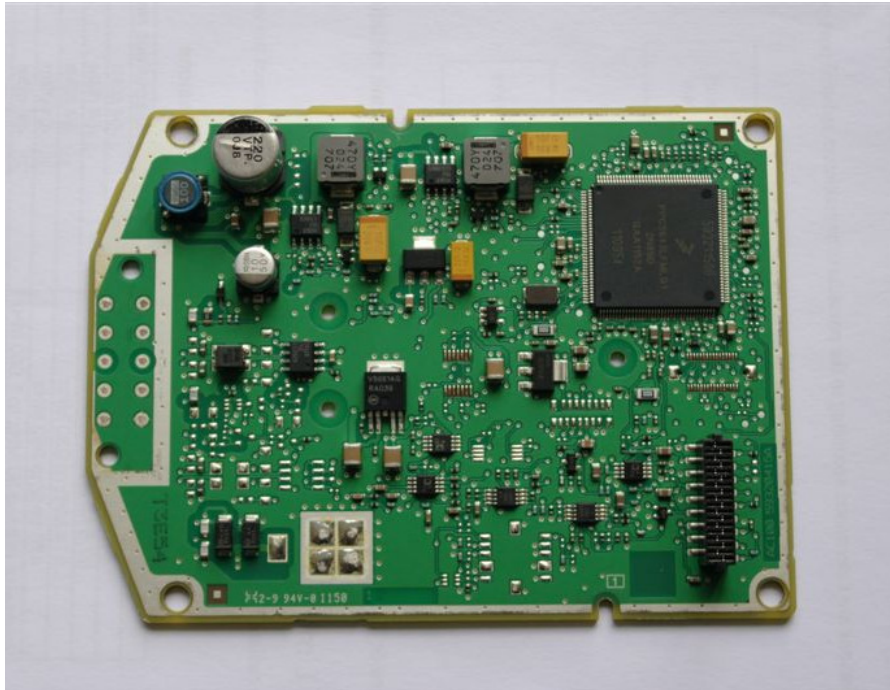


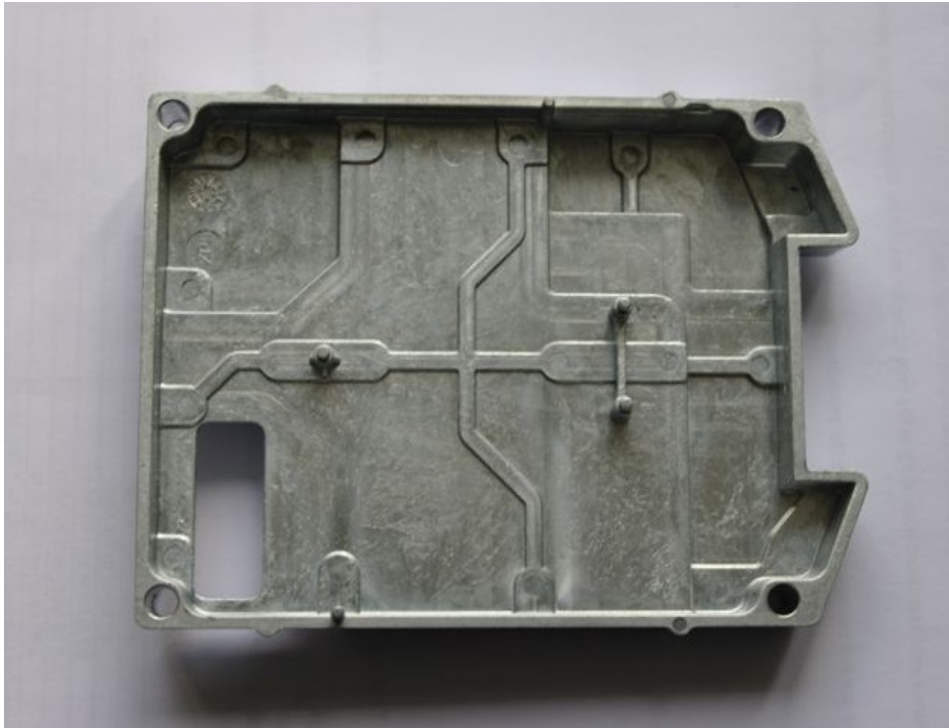
Figure 2: RF Board, circuit side



**Figure 3: PCB Board, side 1**



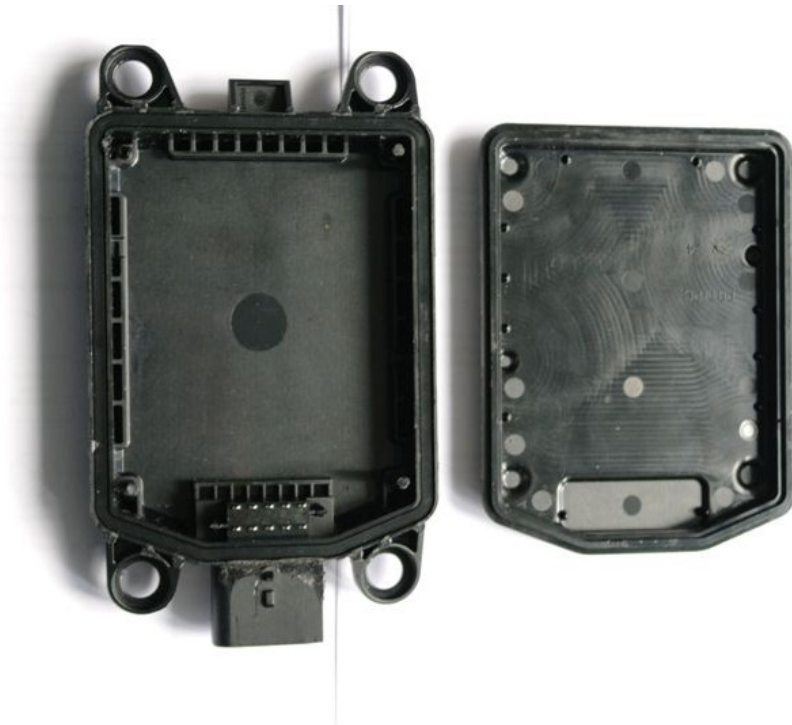
**Figure 4: PCB Board, side 2**



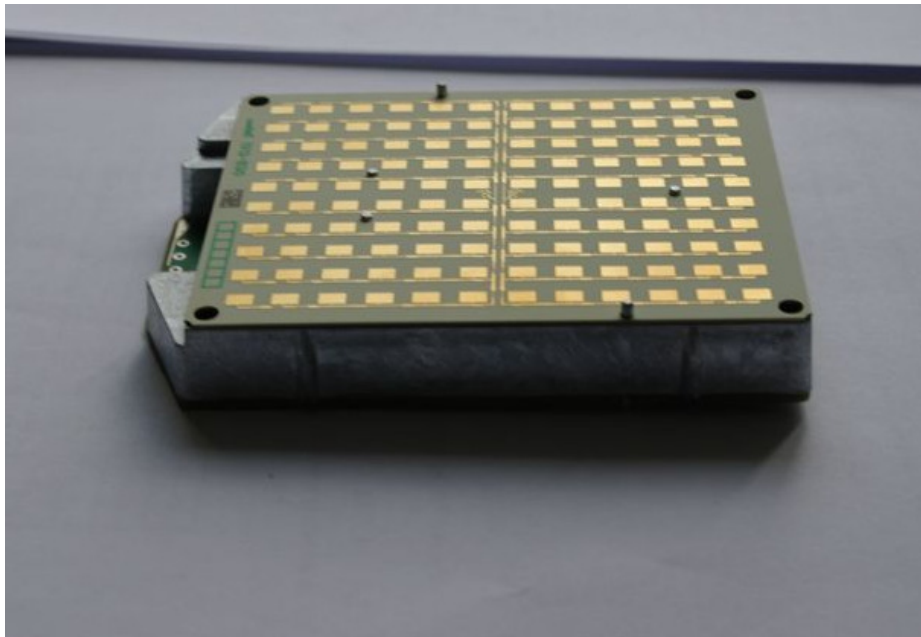
**Figure 5: Central casting, PCB Board side**



**Figure 6: Central casting, RF Board side**



**Figure 7: Housing internal views**



**Figure 8: Internal view, central casting with Boards**