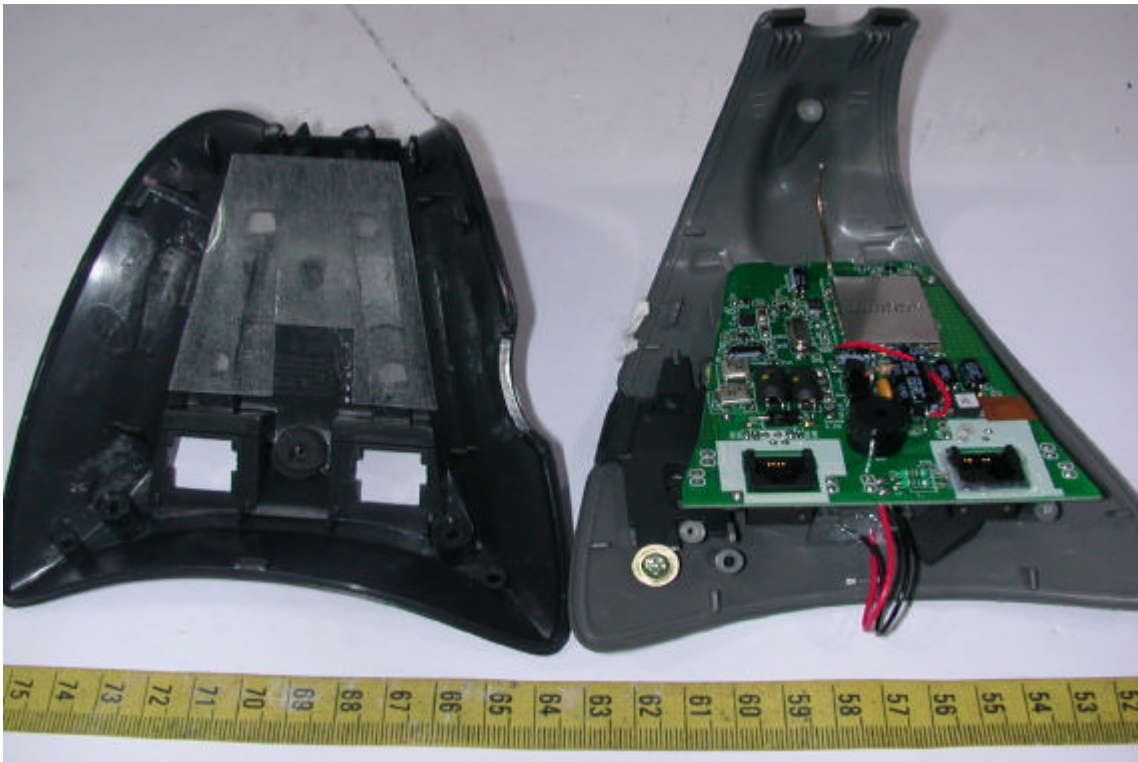
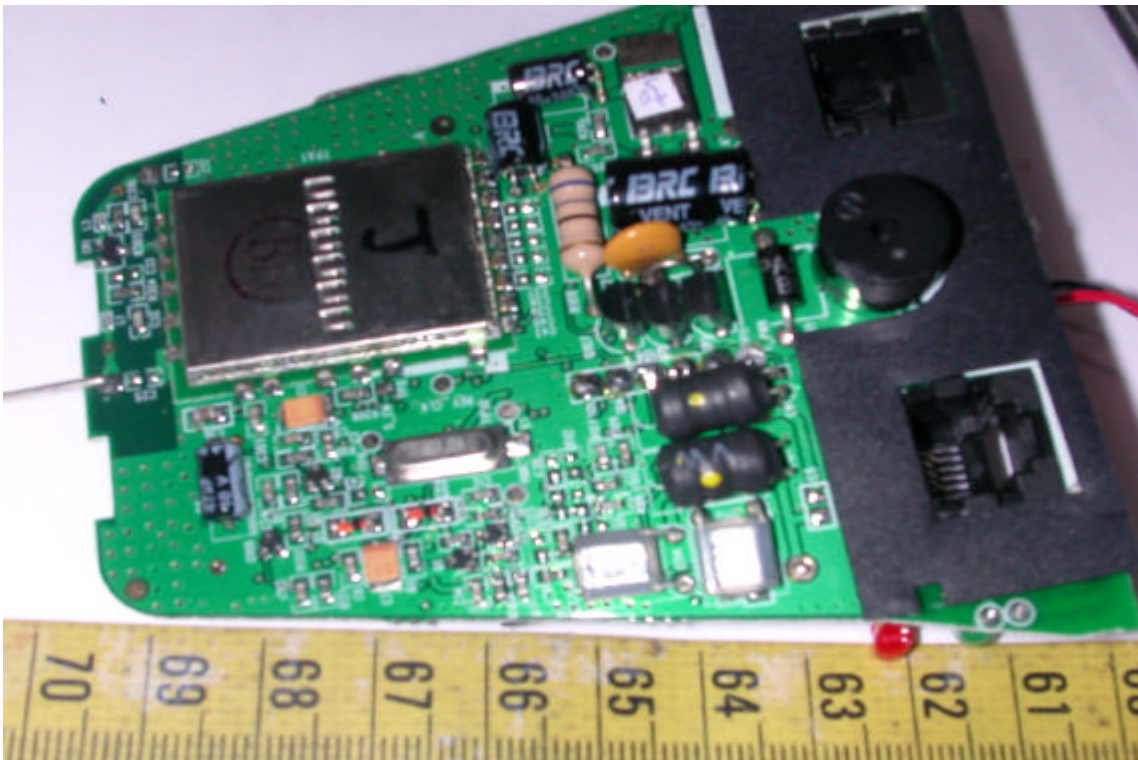


## CONSTRUCTED PHOTOS of EUT

### 5. Internal View of Base Unit

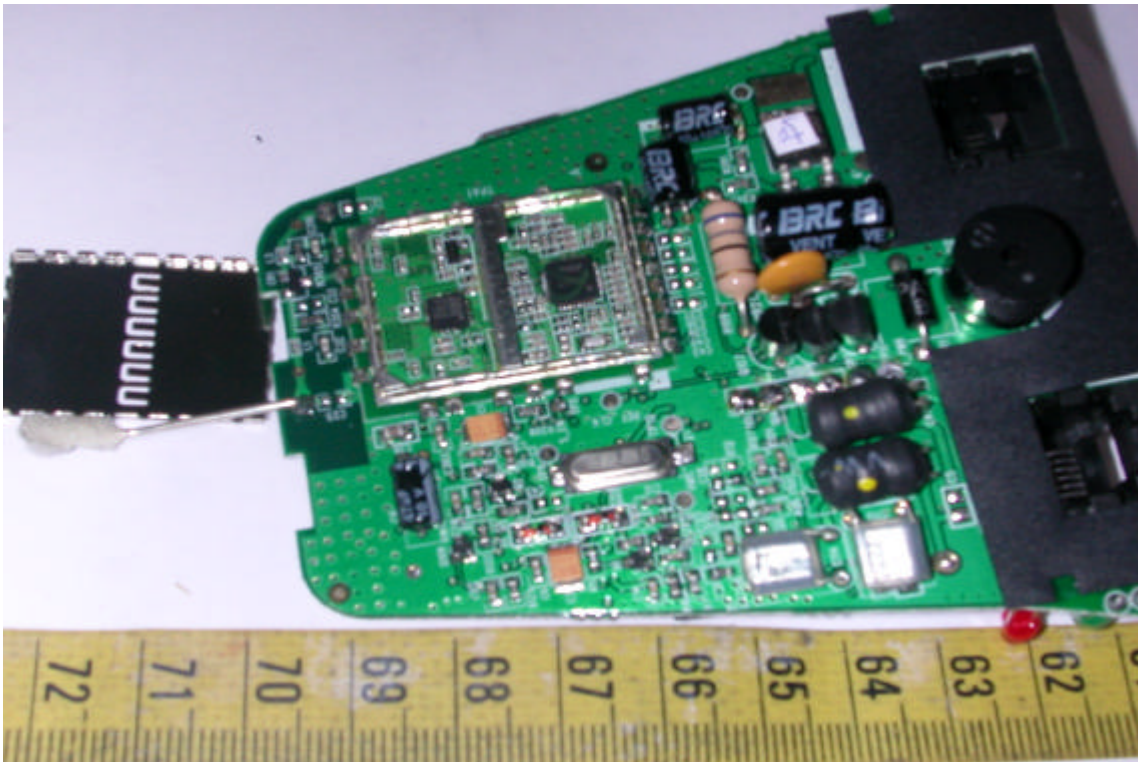


### 6. Component View of Base Unit's Main PCB

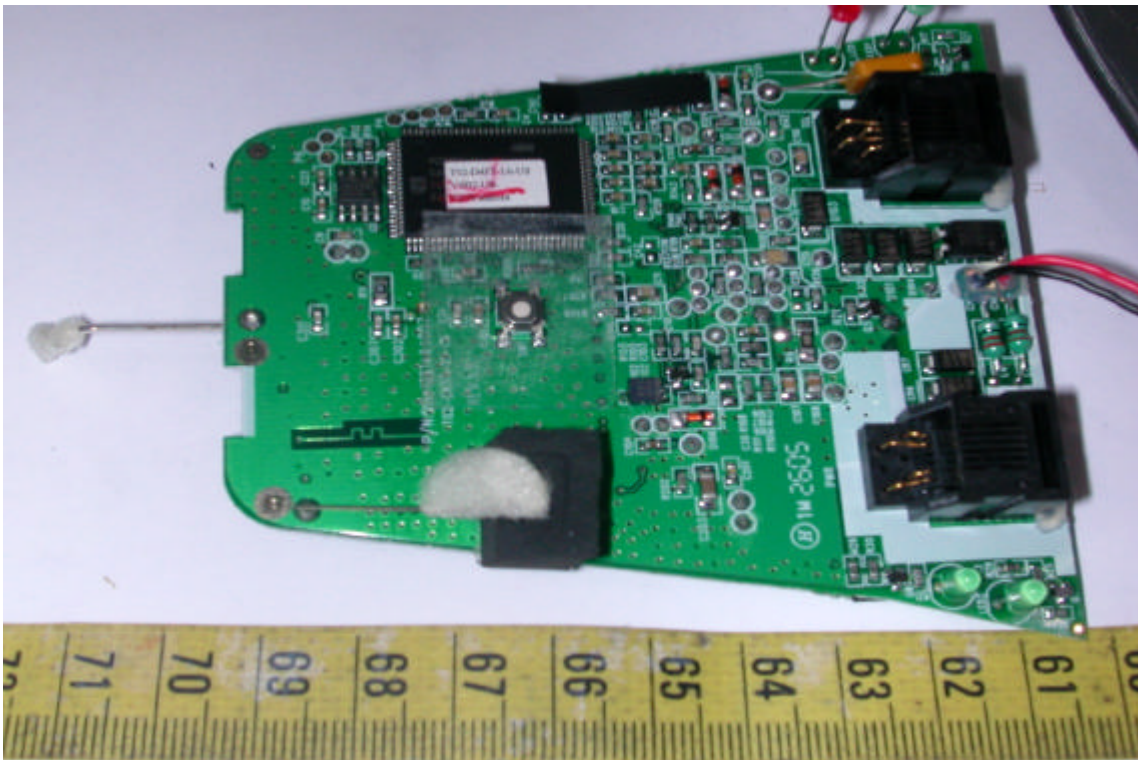


## CONSTRUCTED PHOTOS of EUT

### 7. Component View of Base Unit's Main PCB



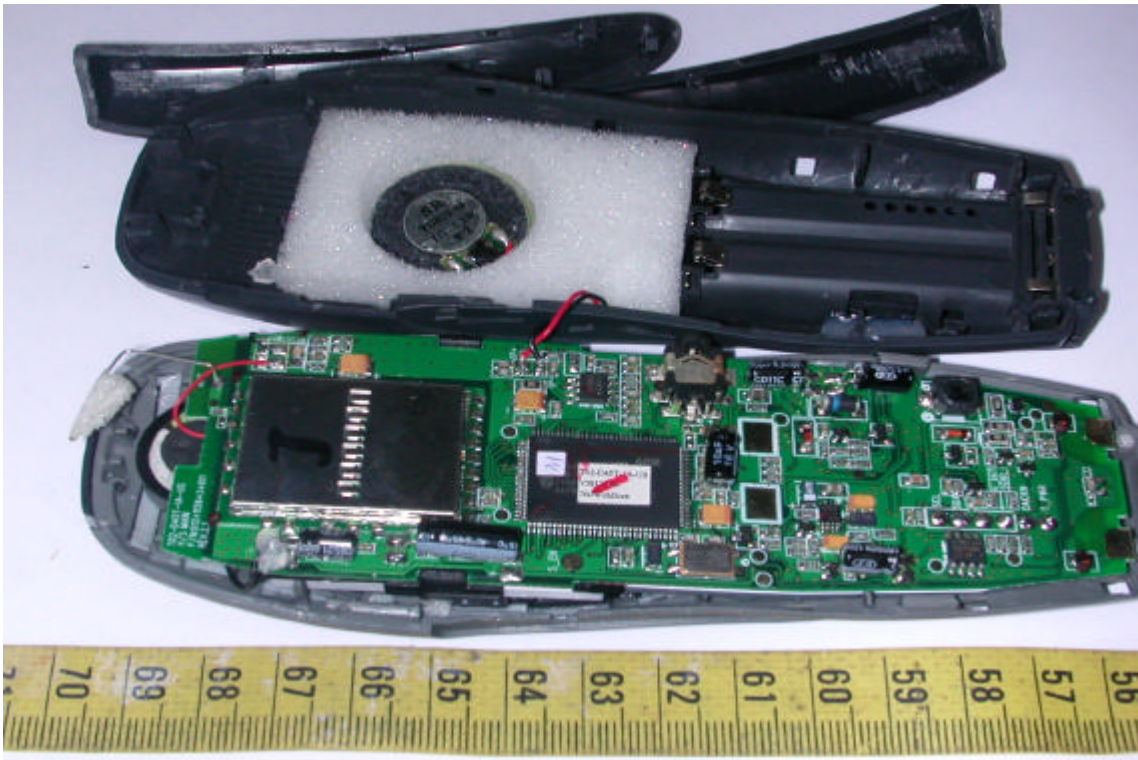
### 8. Solder View of Base Unit's Main PCB





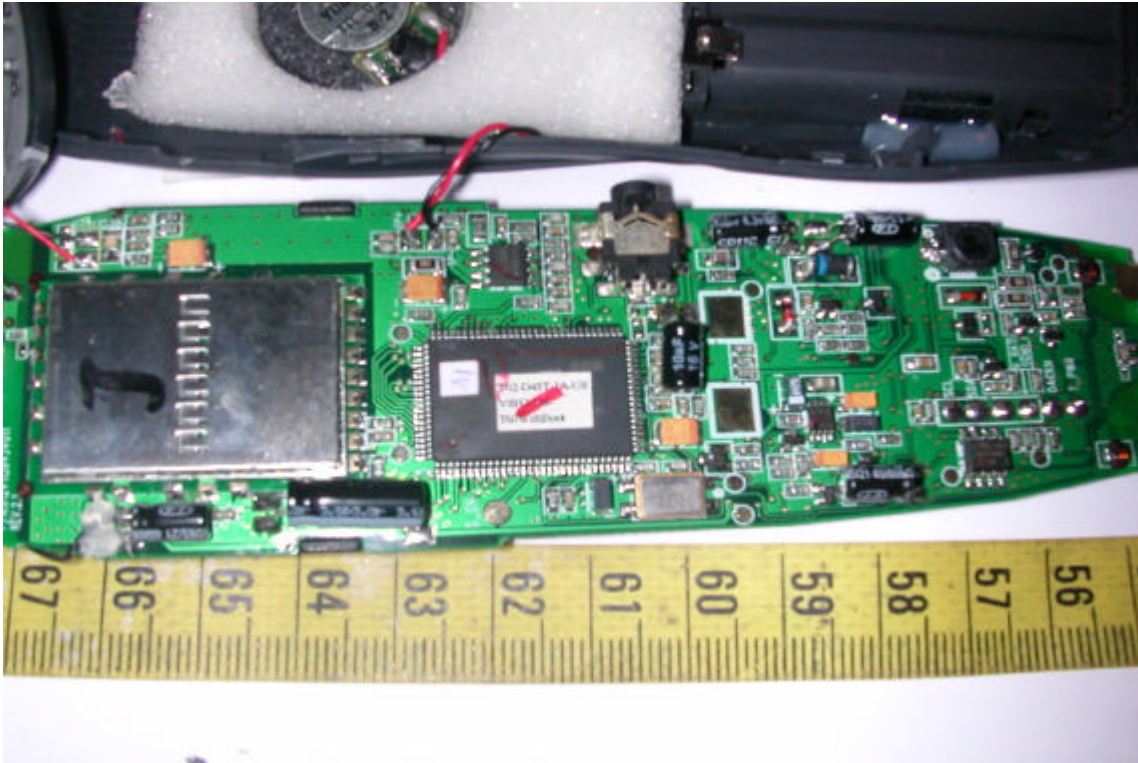
## CONSTRUCTED PHOTOS of EUT

### 5. Internal View of Handset

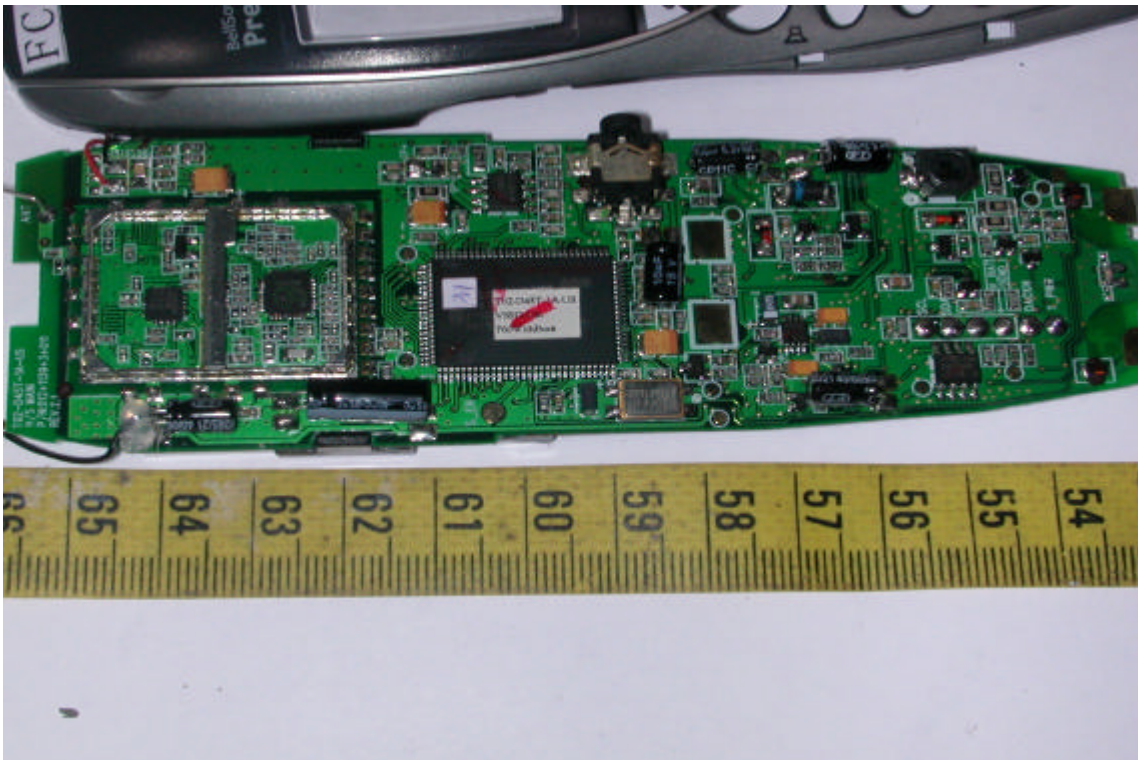


## CONSTRUCTED PHOTOS of EUT

### 6. Component View of Handset's Main PCB

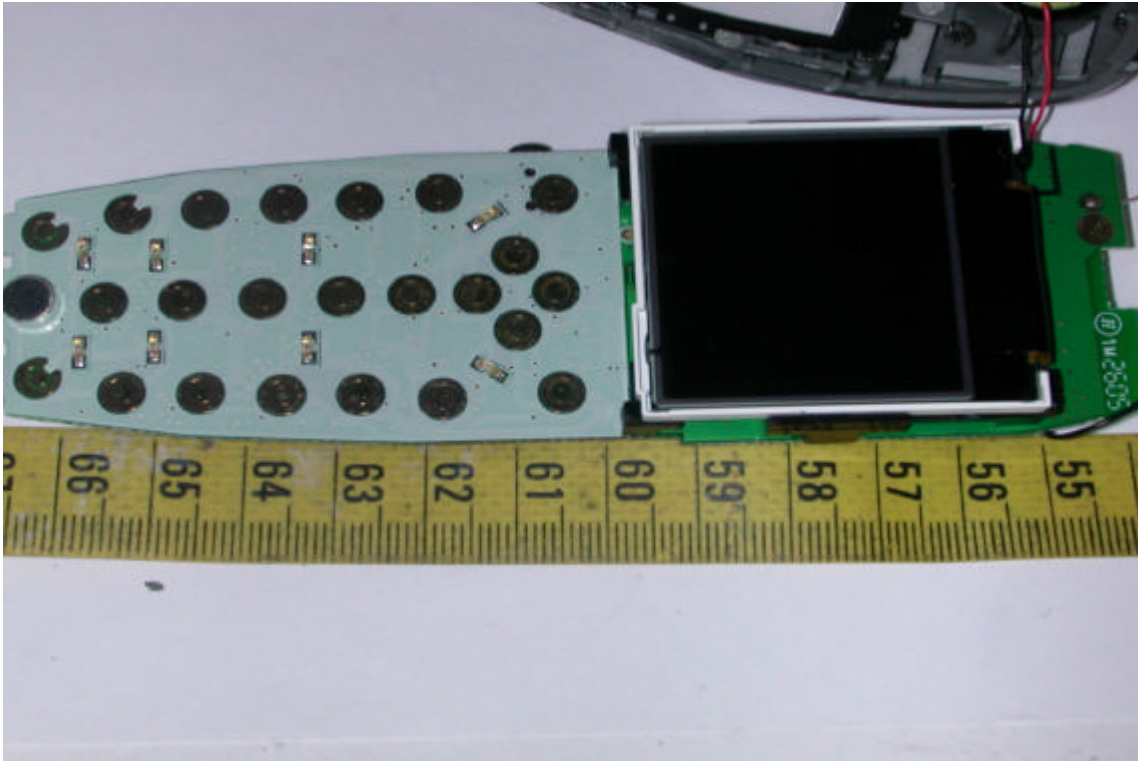


### 7. Component View of Handset's Main PCB



## CONSTRUCTED PHOTOS of EUT

### 8. Solder View of Handset's Main PCB





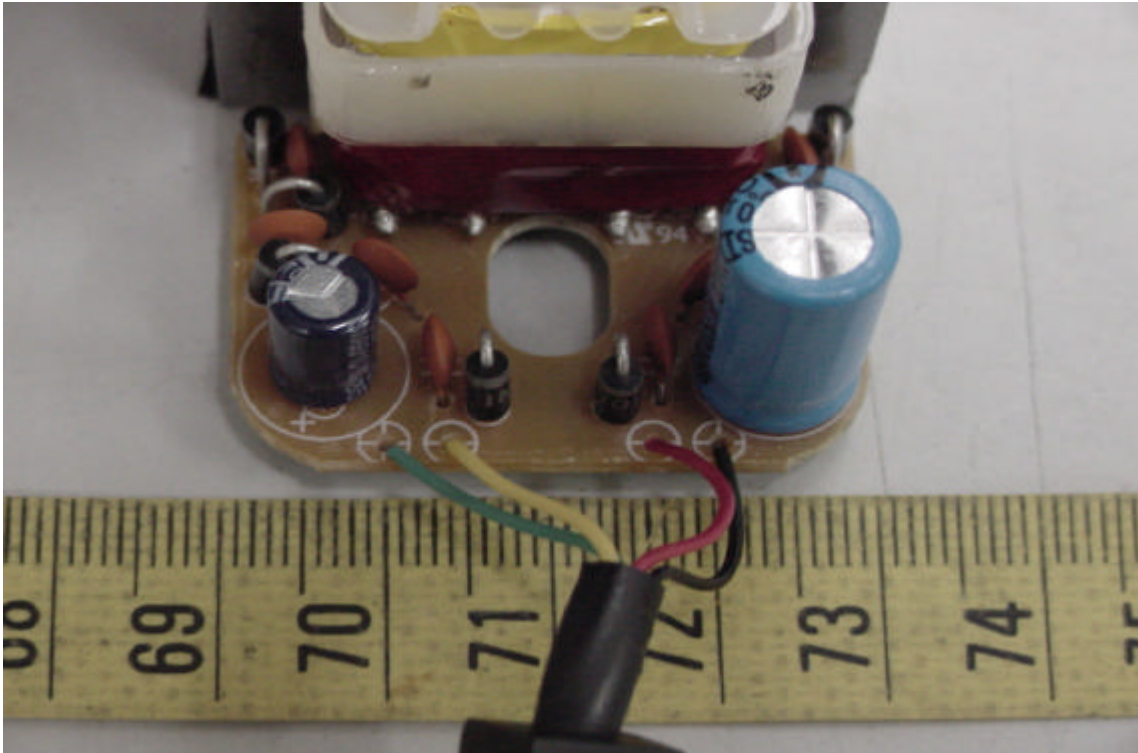
## CONSTRUCTED PHOTOS of EUT

### 3. Internal View of Adaptor



## CONSTRUCTED PHOTOS of EUT

### 4. Component View of Adaptor's Main PCB



### 5. Solder View of Adaptor's Main PCB

