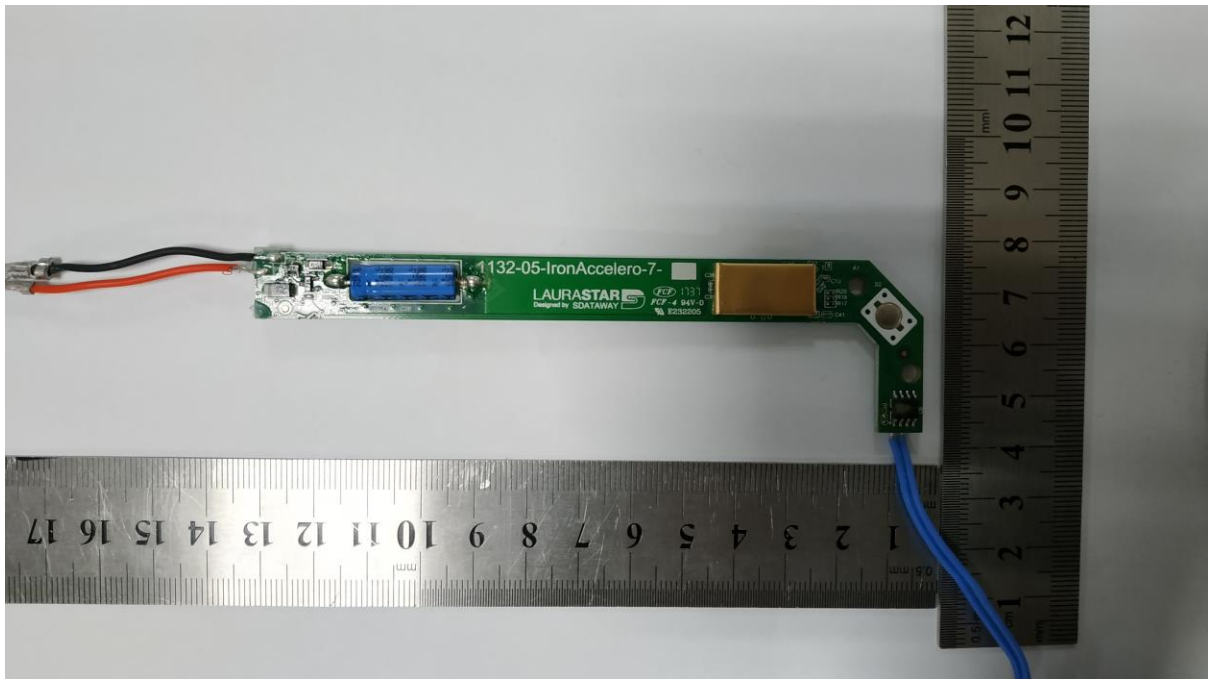




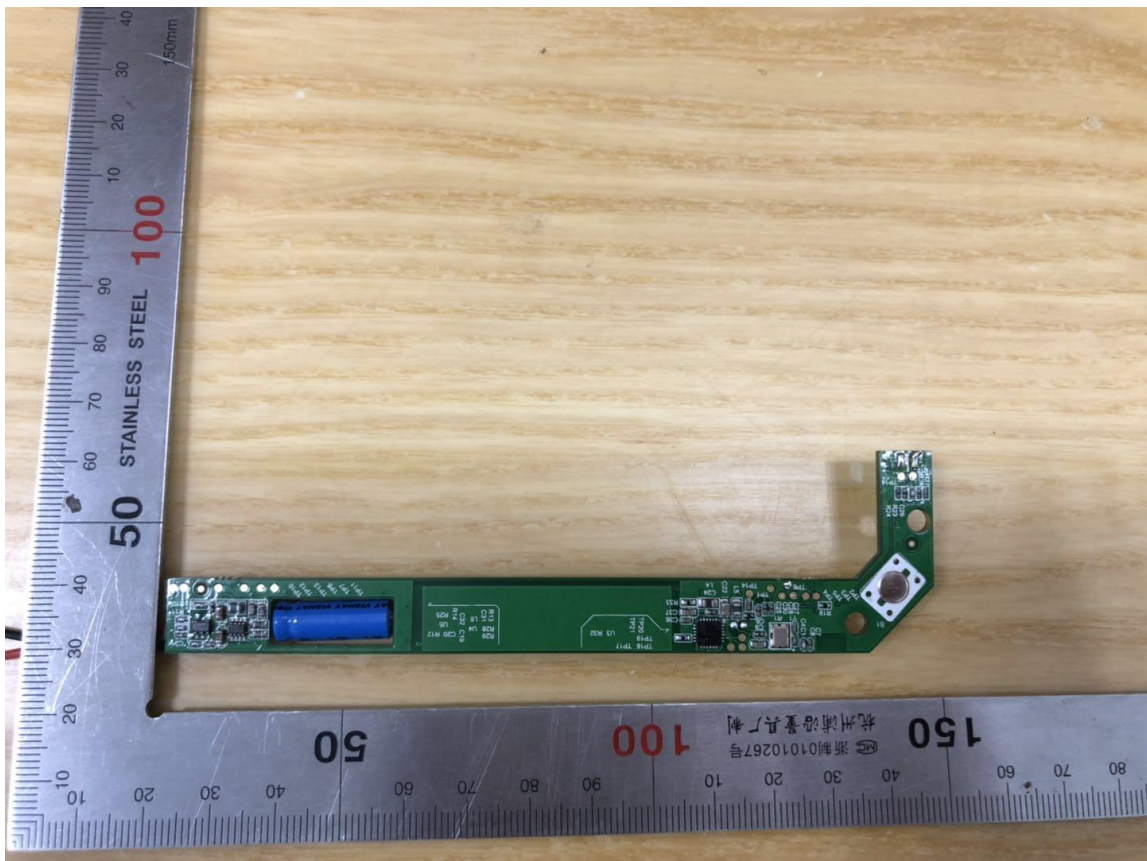
# **Appendix I**

## **External Photographs**

Detail View of EUT-1



Detail View of EUT-2



The image shows a custom-designed green printed circuit board (PCB) for a portable electronic device, likely a digital scale as indicated by the text on the board. The board is L-shaped and populated with various electronic components. Key features include:

- Power Section:** A blue rectangular battery is mounted on the left side. Above it, the text "3V VERNAY VERNAY VERNAY" is printed. Below the battery, there are several test points labeled TP1 through TP10.
- Control and Display Section:** A small LCD display is located in the center. To its right, there are several integrated circuits (ICs), resistors (R1 through R25), and capacitors (C1 through C10). Test points TP11 through TP22 are also present in this section.
- Output Section:** On the right side, there is a small LCD display and a circular component, possibly a speaker or a sensor, with a white label "S1".
- Connectors:** There are several connectors along the edges, including a multi-pin connector on the left and a circular connector on the right.

The board is mounted on a light-colored wooden surface.