

Prüfbericht - Nr.:
Test Report No.

14013998 001

Seite 1 von 2
Page 1 of 2

Manual of Wireless Doorbell
UA-1228

FCC ID S8ABDAFF-T (for transmitter TX-100B)

FCC ID S8ABDAFF (for transmitter TX-100A)

FCC ID S8ABCEBEE (receiver)

Replacing battery:

- ◆ Please follow the diagram (1) on the right to insert batteries

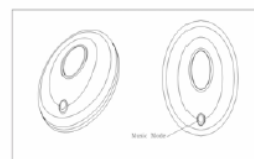


DIAGRAM 1

Tone Setting

- ◆ The switch "MUSICAL MODE" can be used to set different tone of sound up to 4 musical modes such as Ding Dong ; Ding-Ding ; Song of Alice and Song of Westminster. If you like to switch the modes, you only need to hold the button (MUSICAL MODE) for 2 seconds after the previous one finished. To adjust the volume, please tune the button(VOL) by a flat blade screwdriver.<ref to the diagram (2) for reference.>

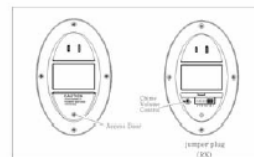


DIAGRAM 2

Code Setting

- ◆ The code is set by manufacture, and there are combinations of codes up to 256. In order to avoid the interference, you can set the code by adding or removing jumpers of the doorbell. Please make sure that the code setting of the transmitter must match with that of the receiver.
Eg. If the code of the receiver is 6,7,8 ; the code of the transmitter must also be 6,7,8. If the interference continues, please re-set the code and do the same procedure for both transmitter and receiver.<ref to diagram(3)>.

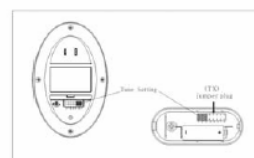


DIAGRAM 3

Mounting on the wall

- ◆ Please remove the back of the case by pushing in the tab on the bottom by screwdrivers. Mount the back of the case on the wall and snap the front case back on. In case of using double side tapes, please ensure the wall is dry and clean.<ref to diagram(4)>

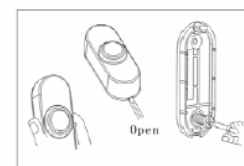


DIAGRAM 4

Prüfbericht - Nr.:
Test Report No.

14013998 001

Seite 2 von 2
Page 2 of 2

Warning: Changes or modifications not expressly approved by the party responsible for compliance would void the user's authority to operate the equipment.

Note: This equipment has been tested and found to comply with the limits for a Class B digital device, pursuant to part 15 of the FCC Rules. These limits are designed to provide reasonable protection against harmful interference in a residential installation. This equipment generates, uses and can radiate radio frequency energy and, if not installed and used in accordance with the instructions, may cause harmful interference to radio communications.

However, there is no guarantee that interference will not occur in a particular installation. If this equipment does cause harmful interference to radio or television reception, which can be determined by turning the equipment off and on, the user is encouraged to try to correct the interference by one or more of the following measures:

- ☐ **Reorient or relocate the receiving antenna.**
- ☐ **Increase the separation between the equipment and receiver.**
- ☐ **Connect the equipment into an outlet on a circuit different from that to which the receiver is needed.**
- ☐ **Consult the dealer or an experienced radio/TV technician for help.**

Industry Canada Statement

Operation is subject to the following two conditions; (1) this device may not cause interference, and (2) this device must accept any interference, including interference that may cause undesired operation of the device.