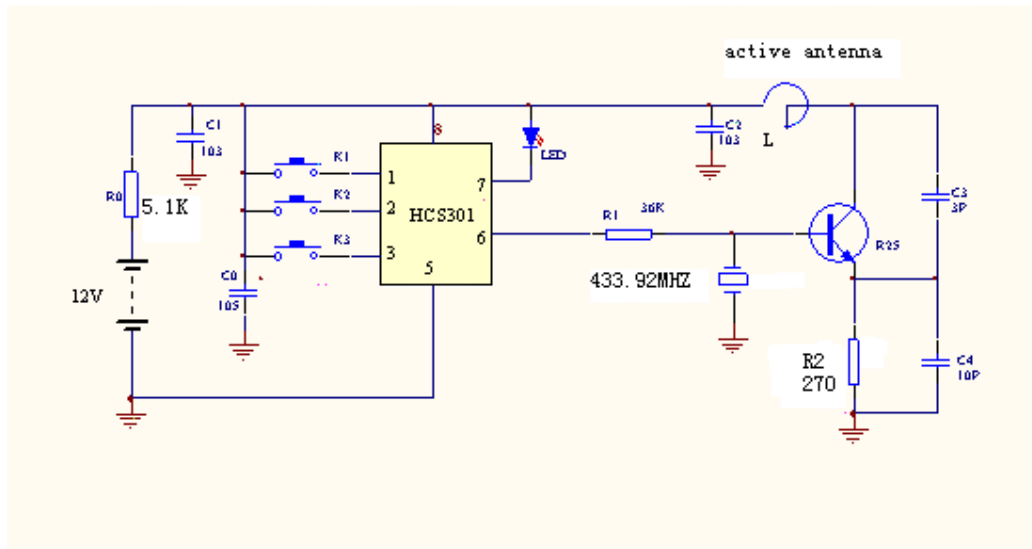


CIRCUIT DIAGRAM



When K1、K2、K3 is cut off , the C0 (10uf/16w) will be charged through +12V power, once press any key of K1、K2、K3, Depending on the storing energy of Co, maintaining HCS301 of special rolling code chip working smoothly, will send a code module signal of baud rate 9.6KB/S to adjust after-coming high frequency , for R0 existing reason , while Co storing energy is not enough to maintain HCS301 working smoothly and it will be cease to work ,the duration of time will be 1-3seconds , remote controller will cease to work automatically even keep the button still .