

Virtual Drive Guide User manual

Please read this manual thoroughly before using Virtual Drive Guide

Contents

1. Warnings and Notifications
2. Contents of packaging
3. Virtual Drive Guide Operation and usage
4. Positioning the Virtual Drive Guide in a vehicle
5. Sound and voice guidance
6. Main Screen
7. Navigating to your destination
8. Additional Information

This manual will help you to use Virtual Drive Guide

We recommend you also read the user manual.

Warnings and Notifications

The driver never adjusts or change setting on the Virtual Drive Guide while the vehicle is in motion. This may cause you to have accident.

- 1) Never adjust or change settings on the Virtual Drive Guide while operating the vehicle
- 2) Be careful reading the Virtual Drive Guide display while operating the vehicle.
- 3) Do not place the Virtual Drive Guide in a location that restricts the safe operation of the vehicle
- 4) Do not open the Virtual Drive Guide as it will void the warranty. There are no serviceable parts inside
- 5) If the Virtual Drive Guide is operating correctly disconnect it immediately and take it to the service center or place of purchase. Do not continue to use the Virtual Drive Guide.
- 6) Ensure that the Virtual Drive Guide is not stored or operated in an environment which has excessive heat, dust, moisture or salt air.
- 7) Ensure that the Virtual Drive Guide is not subjected to excessive shock or vibration.
- 8) Do not leave the Virtual Drive Guide turned on for an extended period while the vehicle engine is not running. It will eventually flatten the vehicle battery
- 9) Always use the correct fuse in the power cable to avoid the fire.
- 10) Ensure the speaker volume of the Virtual Drive Guide is set to a safe level that does not restrict the driver's ability to hear the surrounding traffic.

Contents of packaging

Here's what you will find in the box. If anything is missing please contact the sales man.

- 1) Virtual Drive Guide
- 2) Cradle(Suction cup)
- 3) Positive carries case
- 4) Memory card
- 5) User Manual/Quick Reference
- 6) Cigar jack
- 7) Adaptor(Optional)
- 8) USB Cable(Optional)

Virtual Drive Guide Operation and usage

For your safety, enter destination information before you start a journey.

Right

- 1) Zoom In : Zoom in of map
- 2) View : Map view of driving direction and the cardinal points
- 3) Zoom Out : Zoom out of map

Left

- 1) CODE : Press to input the code
- 2) MENU : Display CRM/POI, Category and History menu.
- 3) CANCEL : Return to map view of the current location

Volume: Rotate up or down to hear the sound

4way Toggle : Move up, down, left or right

Memory Card

Virtual Drive Guide may come with optional memory card containing a pre-activated map of the region in which it was purchased. To navigate to your destination you will first need to insert the memory card into your Virtual Drive Guide

Inserting Memory Card

To insert the memory card, gently insert the card in the slot with label facing the front of the Virtual Drive Guide

Removing Memory Card

To remove the memory card, gently push the card to release it and pull it out of the slot.

Turning Virtual Drive Guide on and off

Use the Power button to turn Virtual Drive Guide on and off during use.

When it is off, Virtual Drive Guide enters the sleep state and the system stops operating. When you turn Virtual Drive Guide on, it comes on the main screen.

Reset Virtual Drive Guide

Normally, you do not need to use the reset your Virtual Drive Guide, however when you have some problems on your Virtual Drive Guide then you can turn it off by pressing the reset of your Virtual Drive Guide to solve the problem.

Positioning the Virtual Drive Guide in a vehicle

Before you begin, check if your vehicle is fitted with a heat reflecting or heated windshield. There are a number of ways to position an Virtual Drive Guide in a vehicle. Follow these three instructions carefully.

- 1) For security and avoid overheating do not leave your Virtual Drive Guide in an unattended vehicle, especially in strong sunlight.
- 2) Do not use or handle the Virtual Drive Guide when it is hot, leave it cool out of direct sunlight.

Follow the safety guidelines to ensure the Virtual Drive Guide does not obstruct the driver's view or interfere with the operation of vehicle airbag and safety devices.

Suction Mount

- 1) Clean and dry the suction cup and the windshield.
- 2) Open the antenna outward so it has a clear view of the sky
- 3) Slip up the suction to the Virtual Drive Guide
- 4) Choose the position on the windshield that is clearly visible to the driver without obstructing the view of the road.
- 5) Hold the suction cup firmly against the windshield and press level down
- 6) Plug the cigar cable into the socket on the side of the Virtual Drive Guide and the other end into the vehicle light socket.

You are now ready to turn on the Virtual Drive Guide and go through the steps to enter the destination.

Sound and voice guidance

1 페이지 존재(작업 전)

Main Screen

Main Menu Screen

The Main Menu screen gives you access to all of the Virtual Drive Guide initial screen, including navigating to a destination

1. Press power button or insert your cigar jack.
2. You can select your favorite language.
3. The warning screen will display. Read the warning message and click the enter button to confirm that you understand.
4. You can see the map where shows your current position on the screen.

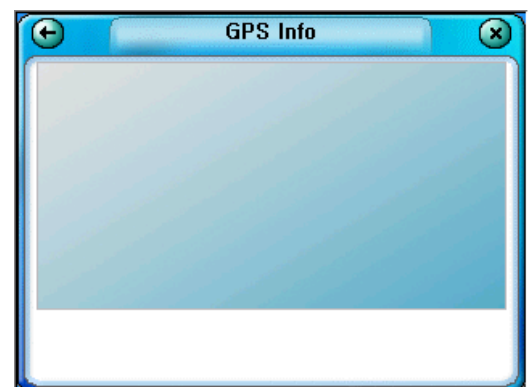
Screen Keyboard

The screen keyboard will display when required to enter text, such as when entering a street name and place code which you can find it on the leaflet.



GPS Status

Signals are transmitted by Global Position System(GPS) satellites orbiting the Earth. This screen provided a visual representation of the information being received. Latitude and longitude are displayed, along with a North-pointing compass, the heading in degrees and ground speed. Satellites available are shown as segments.



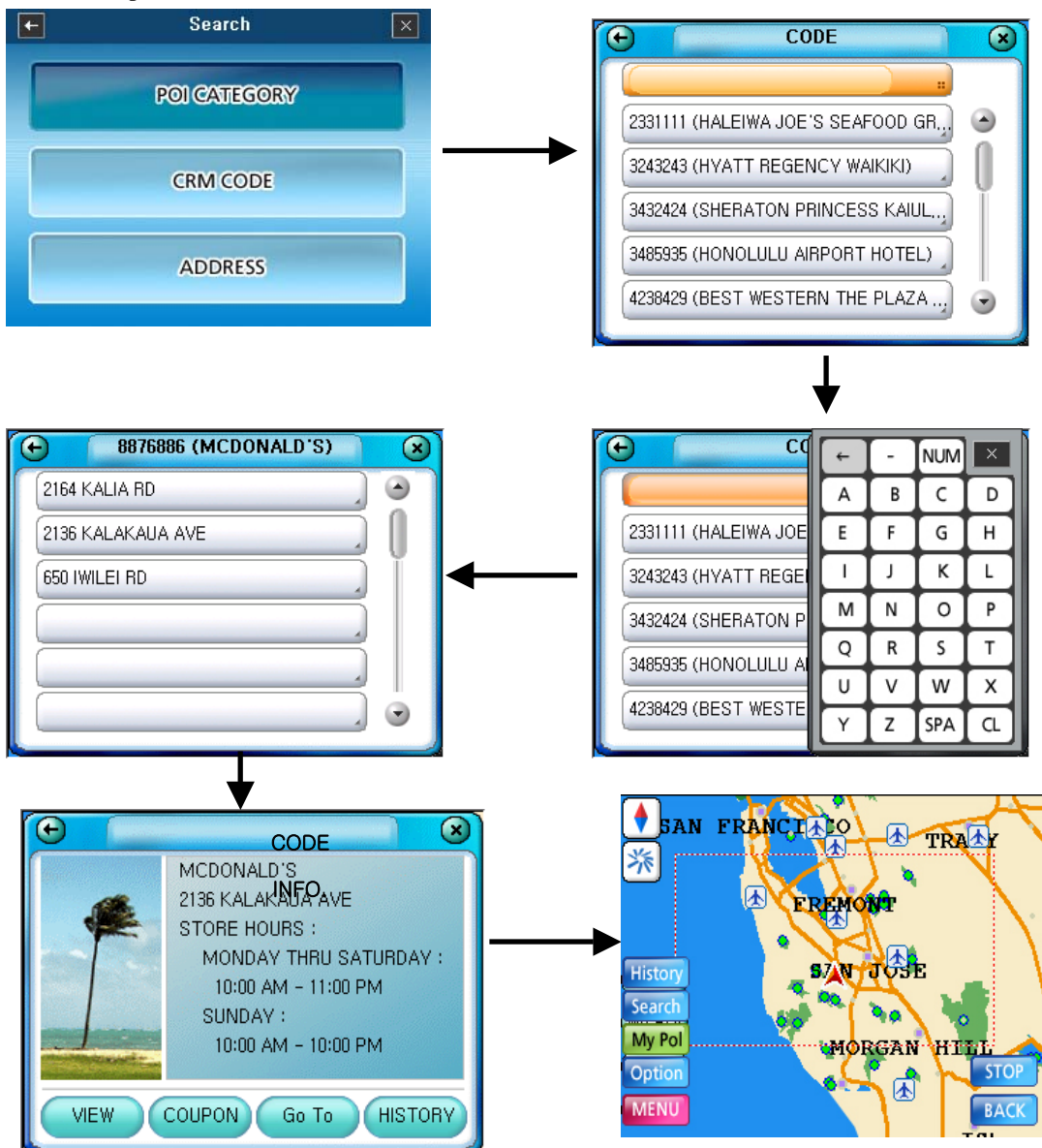
Navigating to your Destination

You can navigate to a CRM CODE, Address, POI(point of Interest) Category, MYPOI (Previously saved favorite, recently traveled destination)



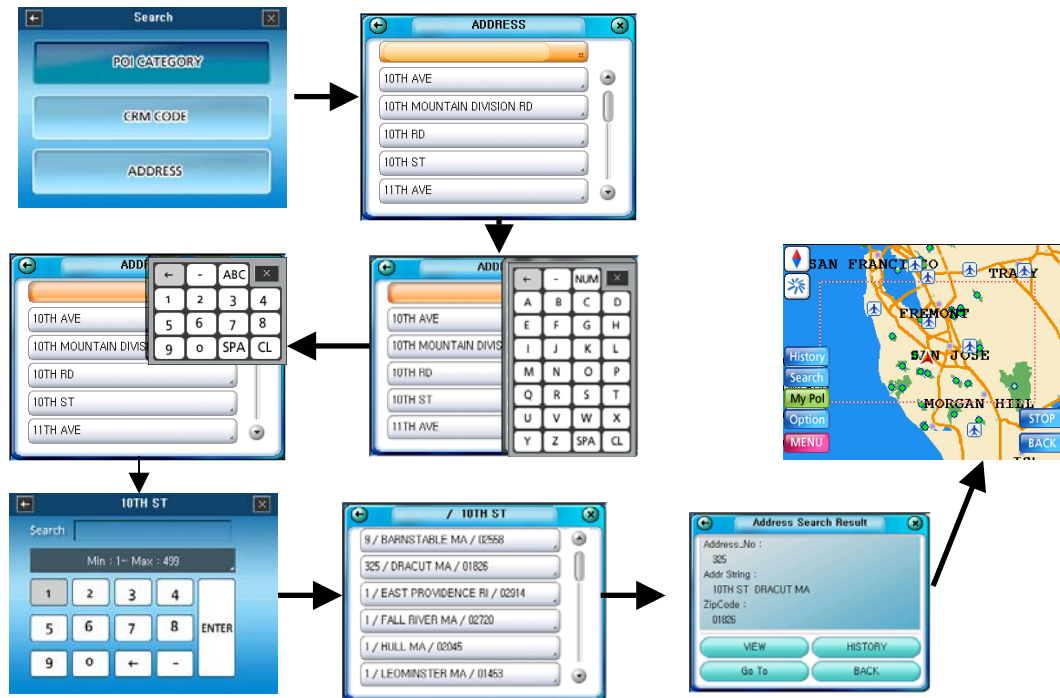
Navigating to a CODE

1. From the Main Menu, tap the Search then tap the CRM CODE
2. Use the Keyboard to input the keyword of CRM CODE
3. Select the place where you want to set
4. Tap the "GO TO" or Back if you want to move the previous screen



Navigating to a street address

1. From the Main Menu, tap the Search button and then tap the Address.
2. Input your address number & street name using keyboard. If you know Zip Code & City you can select the option Button.
3. Tap the list to select the destination
4. Tap the “GO TO” or Back if you want to move the previous screen



Navigating to a POI (Point of Interest) Category

A POI is a named site, feature, landmark or public venue.

1. From the Main Menu, tap the Search and then tap the POI Category.
2. Choose your Category and then select the one what you want
4. Use Keyboard to list up
5. Choice your destination, then tap the view if you want to see the map of the place or tap the GO TO continuing searching

Search

POI CATEGORY

CRM CODE

ADDRESS

Category

Hotel Restaurants Parks and Recreation

Shopping Petrol/Gasoline Station Financial Institutions

Rental Car Agencies Golf Course Others

Search

BARNSTABLE MUNICIPAL AIRPORT

BEVERLY MUNICIPAL AIRPORT

BOSTON LOGAN INTERNATIONAL AIRPORT

CAPE COD AIRPORT

CHATHAM MUNICIPAL AIRPORT

NUM

A B C D E F G H I J K L M N O P Q R S T U V W X Y Z SPA CL

Category

Search

10TH GREEN INN

39 CYPRESS BB-REDWING COTTAGE

A REGENCY LODGE

A ROOM ON THE TOP

POI Search Result

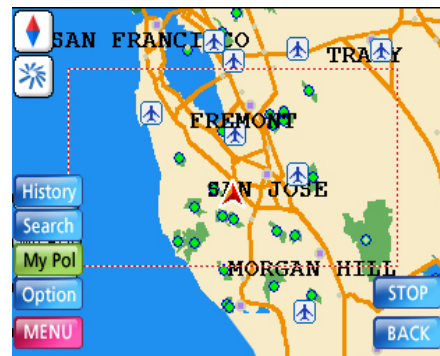
NAME : BARNSTABLE MUNICIPAL AIRPORT

ADDRESS : 480 BARNSTABLE RD BARNSTABLE MA 002601

PHONE : 508, 775, 2020

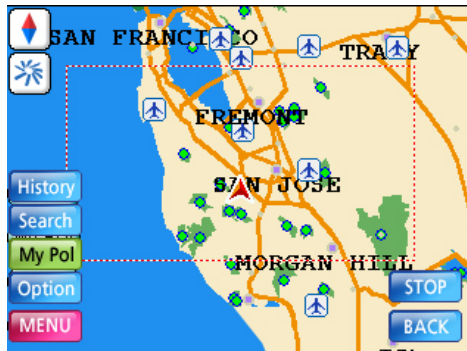
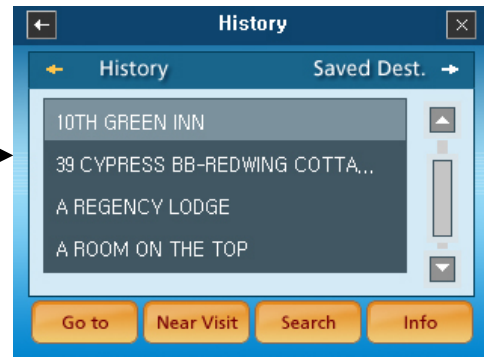
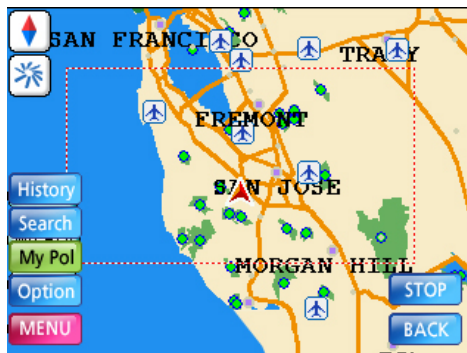
VIEW HISTORY

Go To BACK



Navigating to a history

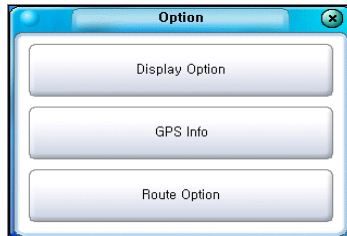
1. From the Main Menu, tap the History and then choose the visited POI or POI to visit.
2. Choice your destination, then tap the view if you want to see the map of the place or tap the GO TO continuing searching



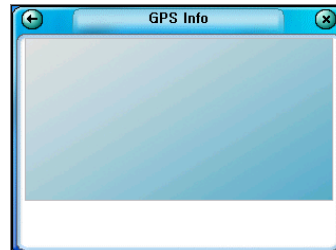
Options

There are number of ways to see the information

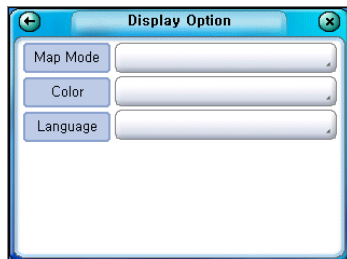
1. You can choice your Map Screen view (North up or Heading up), brightness (Day, Night) and how to display the screen (High way first, Normal road first)
2. You can see the GPS signal information



설정메뉴
초기화면



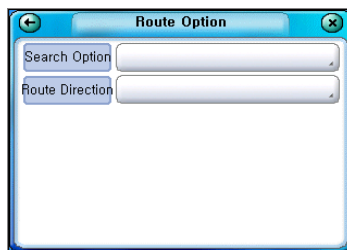
GPS 정보



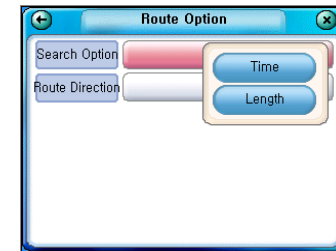
Display 옵션화면



Color Mode



Route 옵션



Route 옵션

3. Viewing your Route

Once a route has been calculated, you can see the route from start point to your destination. Zoom using the “+” and “-“ button.

To cancel a route or stop the Route guidance, you can click the “Route Cancel” Button.

4. Map Screen and next turn screen

This screen displays north up or heading up. You can change the mod through the “View” in your system. Next turn screen display the turning direction, street name and the distance from the next turn.

The following are displayed

- 1 Current Speed
- 2 Current time
- 3 Distance from next turn
- 4 Expected arriving time
- 5 GPS signal status
- 6 Routing way

5. Saving History

You can save up to 10 destinations on the Virtual Drive Guide

6. Back-On –Track Automatic Rerouting

New route guidance will be stored automatically if you want to route it again..

7. Updating your software

We regularly update the software version by changing SD memory two times a year.

* Labeling requirements

This device complies with Part 15 of the FCC Rules. Operation is subject to the following two conditions: (1) this device may not cause harmful interface, and (2) this device must accept any interference received, including interference that may cause undesired operation.

CAUTION : Any changes or modifications in construction of this device which are not expressly approved by the party responsible for compliance could void the user's authority to operate the equipment.

* Information to user

NOTE: This equipment has been tested and found to comply with the limits for a Class B digital device, pursuant to Part 15 of the FCC Rules. These limits are designed to provide reasonable protection against harmful interference in a residential installation. This equipment generates, uses and can radiate radio frequency energy and, if not installed and used in accordance with the instructions, may cause harmful interference to radio communications. However, there is no guarantee that interference will not occur in a particular installation. If this equipment does cause harmful interference to radio or television reception, which can be determined by turning the equipment off and on, the user is encouraged to try to correct the interference by one or more of the following measures:

- Reorient or relocate the receiving antenna.
- Increase the separation between the equipment and receiver.
- Connect the equipment into an outlet on a circuit different from that to which the receiver is connected.
- Consult the dealer or an experienced radio/TV technician for help..

A/S Center Operate

MediaWill Telematics,LLC.

725 Piikoi Street, Suite 1002 Honolulu, HI 96814

Tel : 408-551-4523 / Fax

www.mediawill-tech.com / e-mail : gene@mediawill-tech.com