

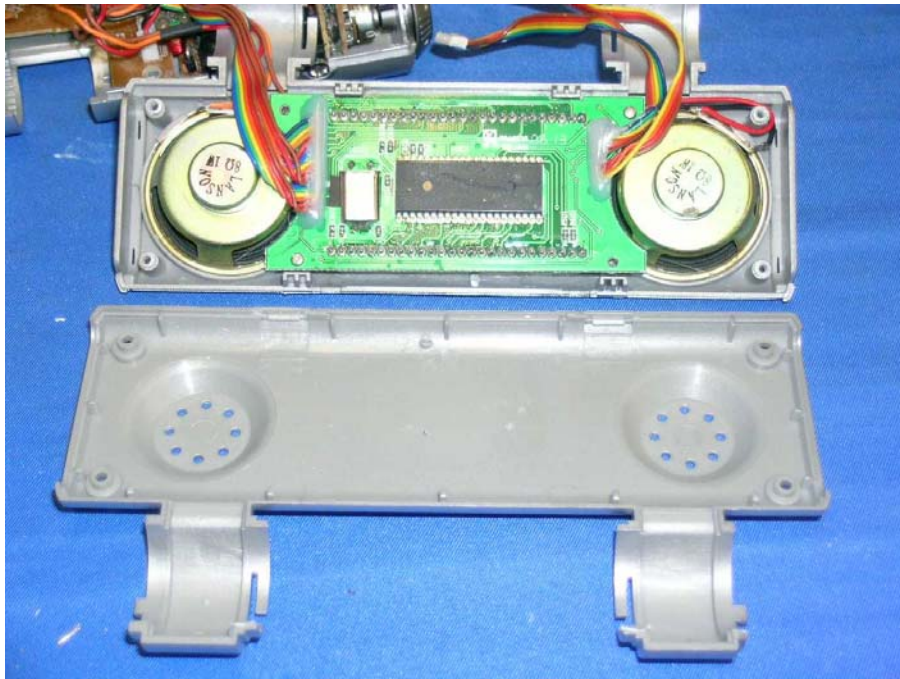
INTERTEK TESTING SERVICES

Internal photos

Base Unit assembly (View 1)



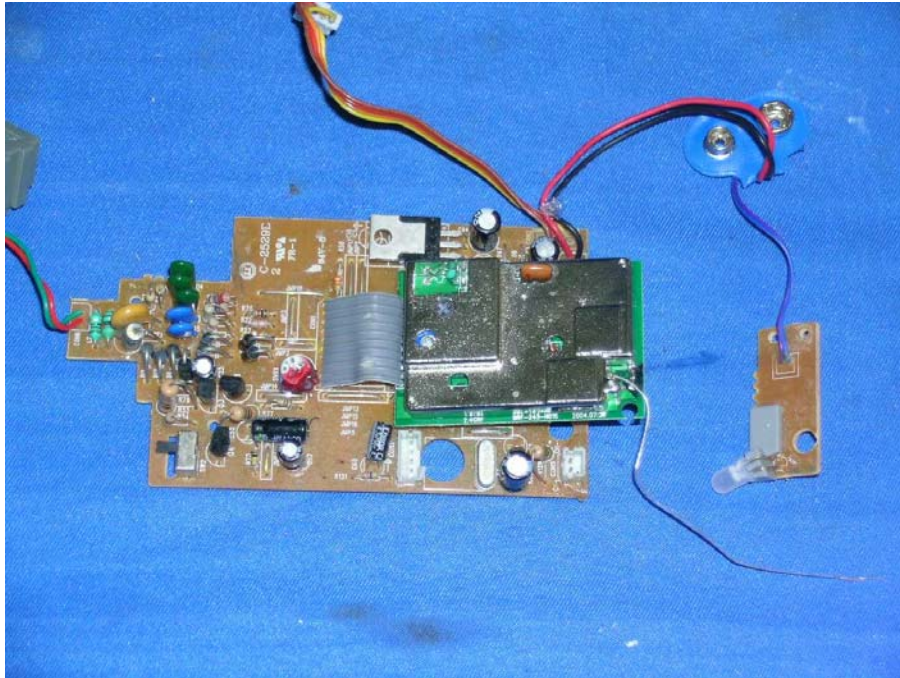
Base Unit assembly (View 2)



INTERTEK TESTING SERVICES

Internal photos

Base Unit Main PCB comp side (View 1)



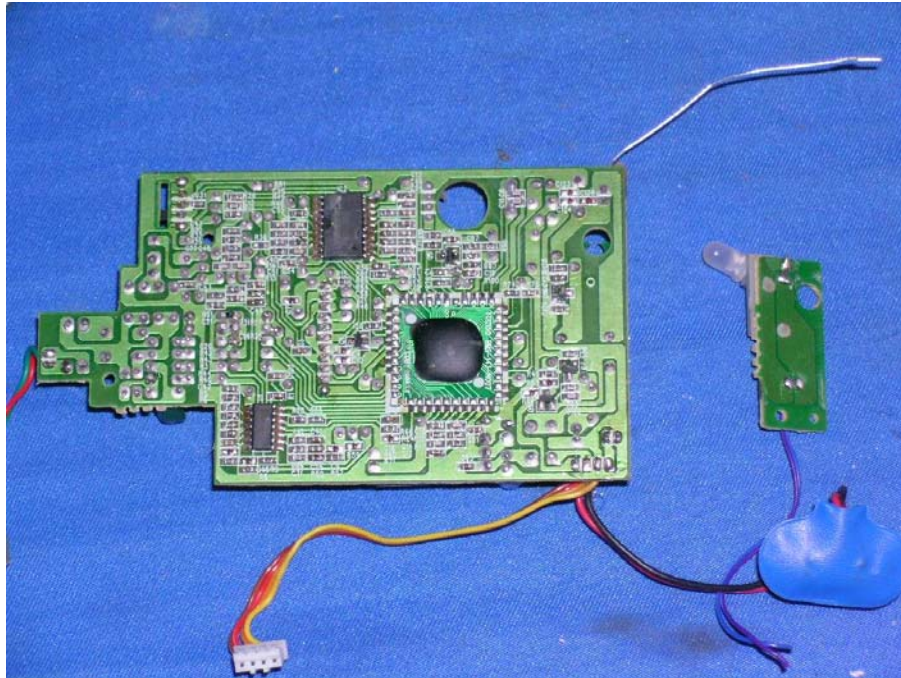
Base Unit Main PCB comp side (View 2)



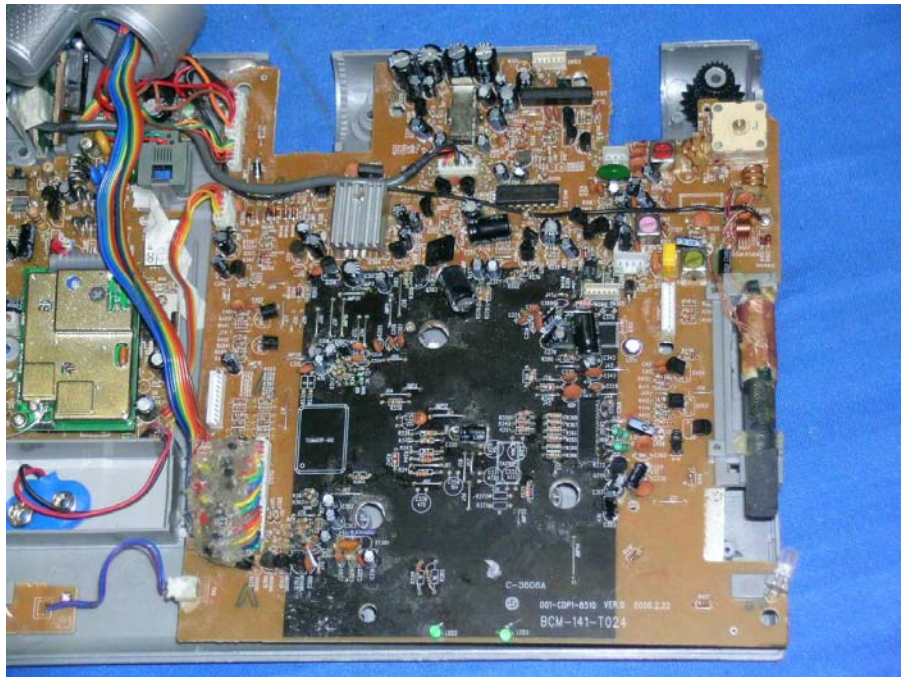
INTERTEK TESTING SERVICES

Internal photos

Base Unit Main PCB solder side



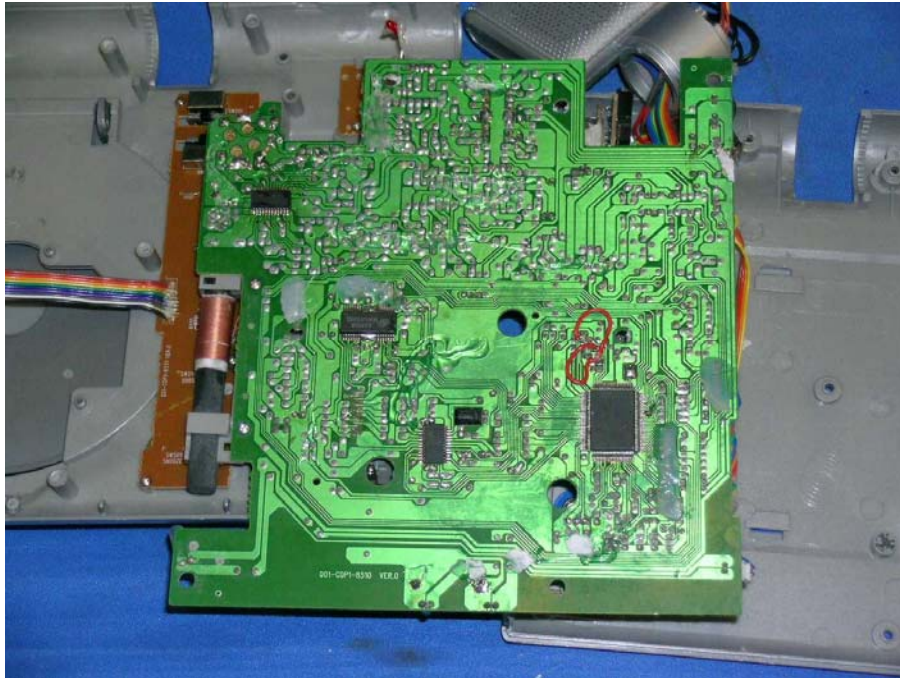
CD Player PCB comp side



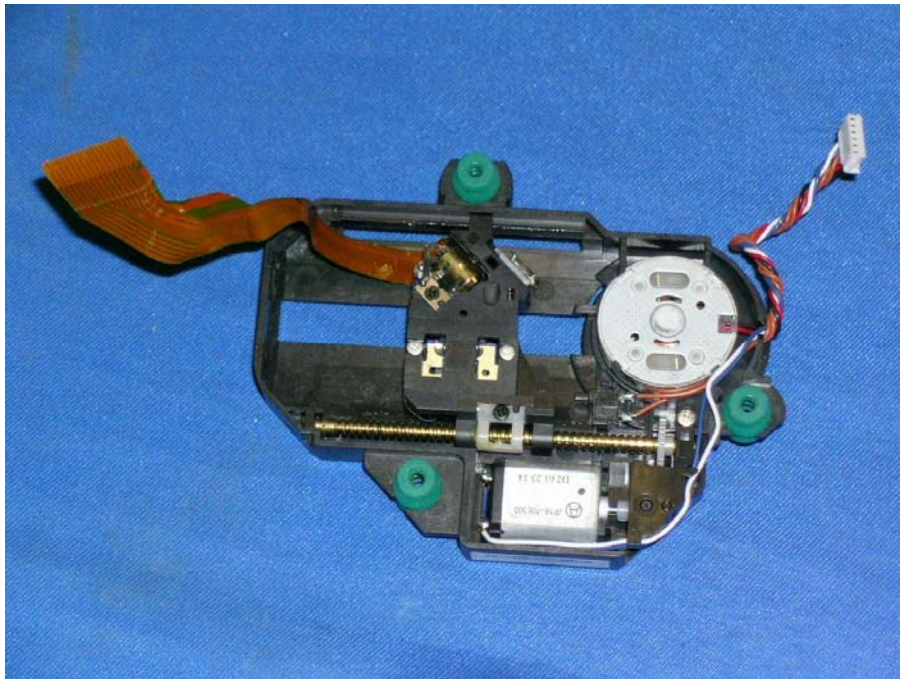
INTERTEK TESTING SERVICES

Internal photos

CD Player PCB solder side



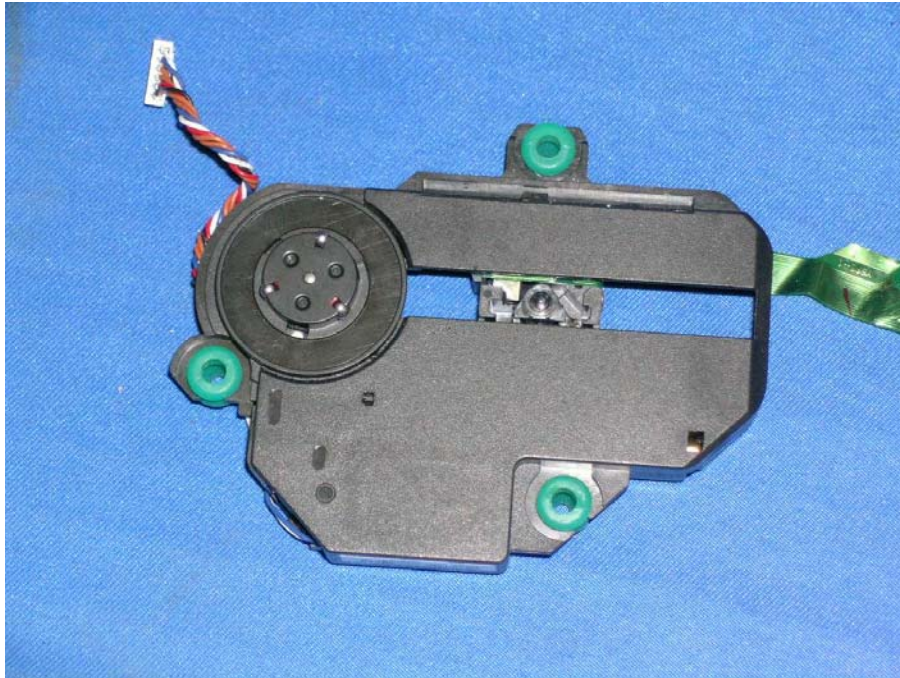
CD Loader front side



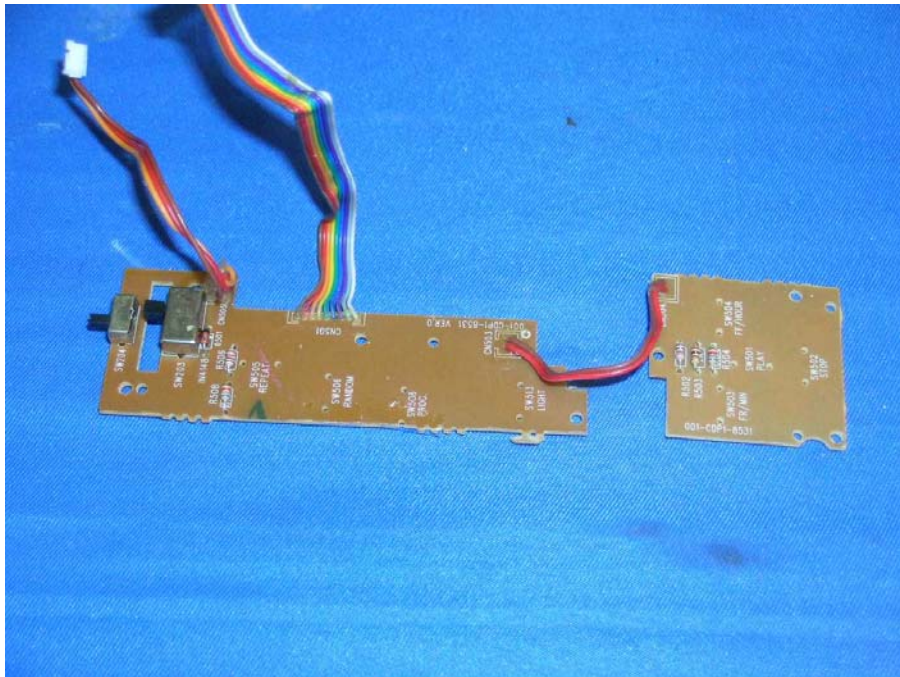
INTERTEK TESTING SERVICES

Internal photos

CD Loader rear side



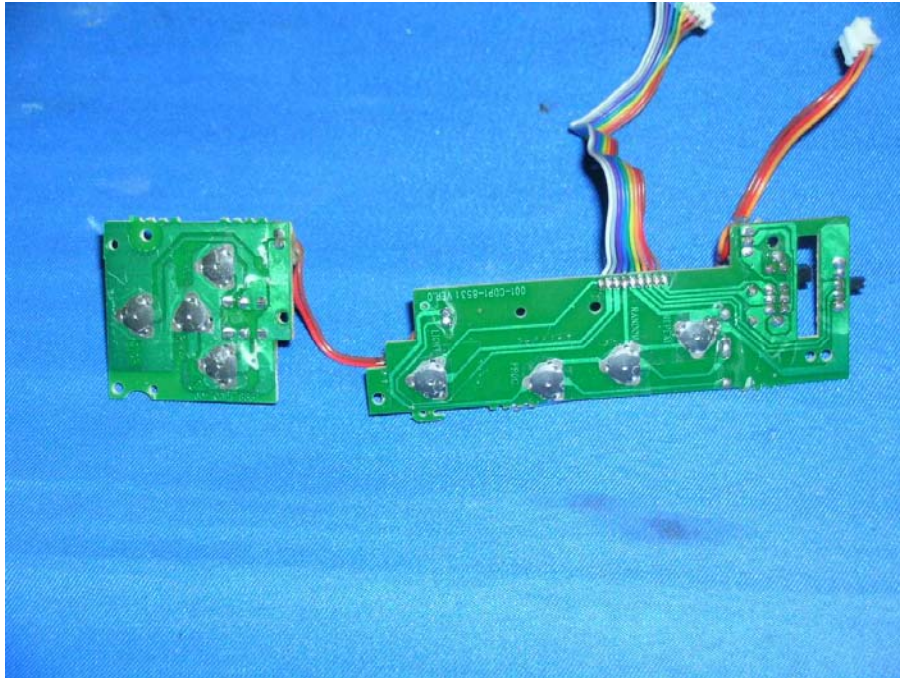
CD Player Keypad front side



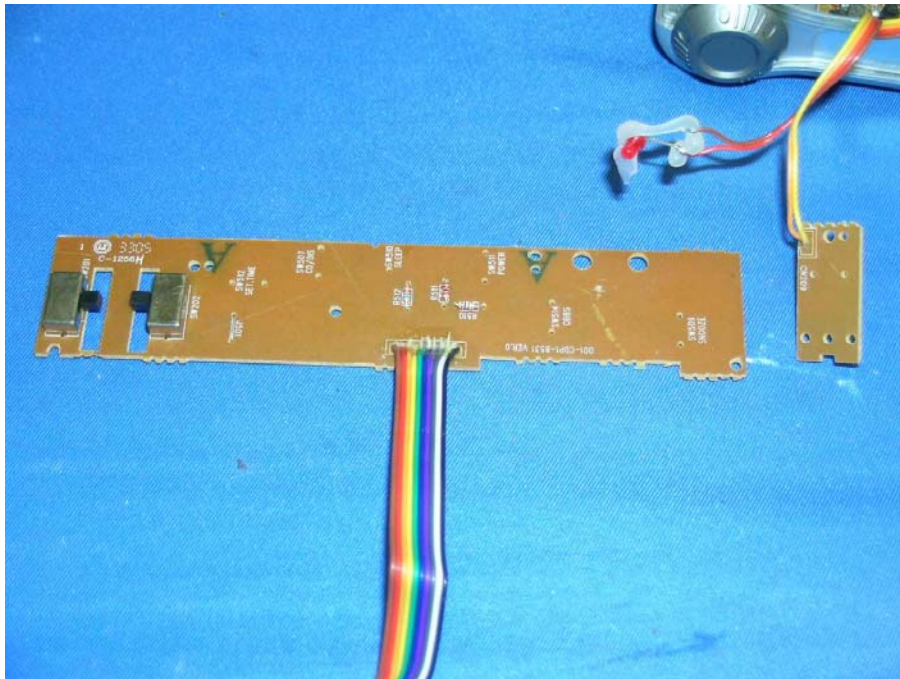
INTERTEK TESTING SERVICES

Internal photos

CD Player Keypad rear side



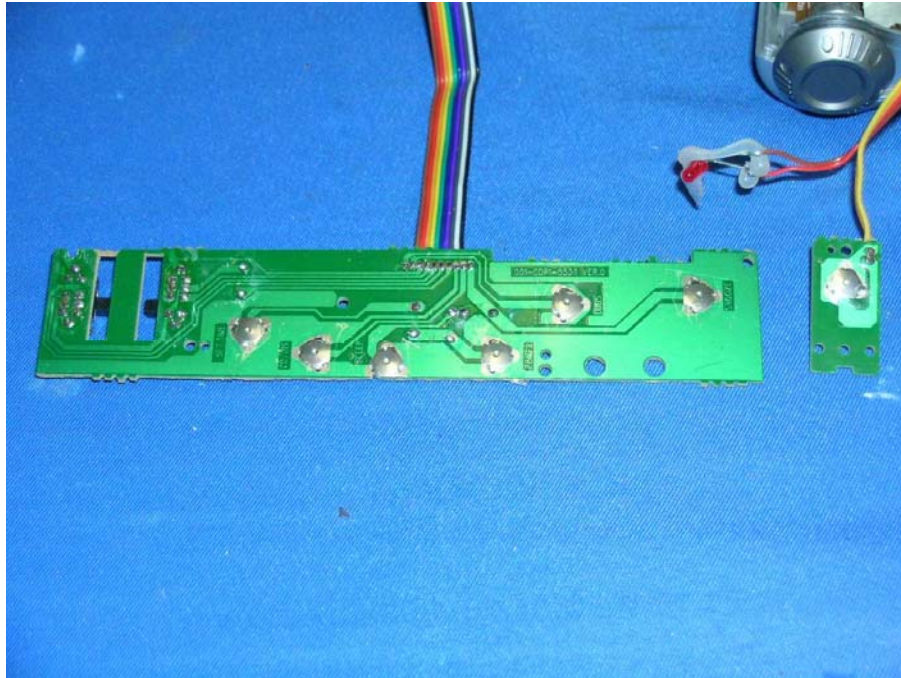
CD Player another Keypad front side



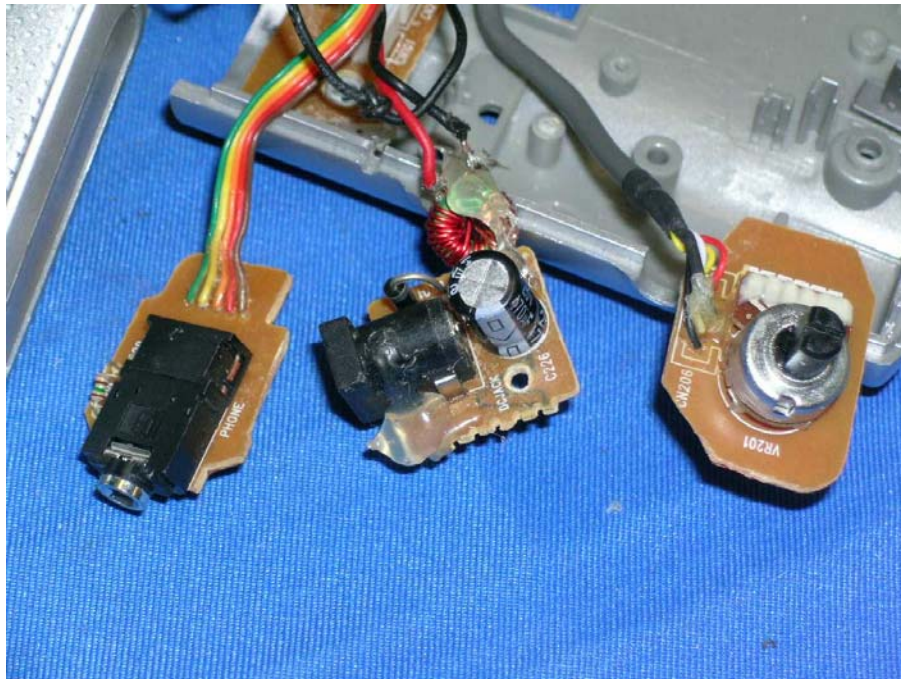
INTERTEK TESTING SERVICES

Internal photos

CD Player another Keypad rear side



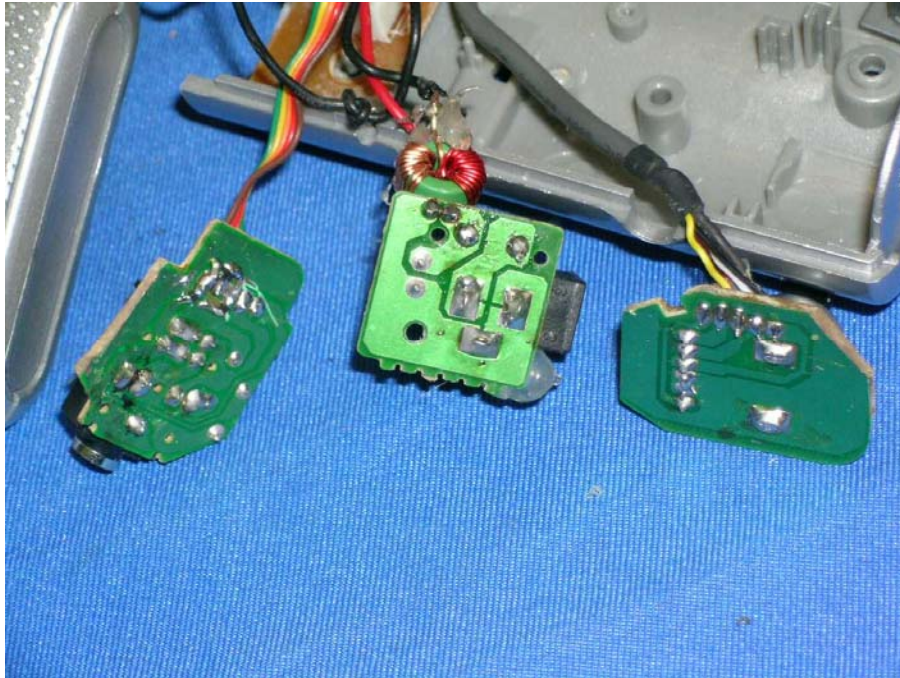
Headphone Jack, AC Power Jack, and Volume Switch front side



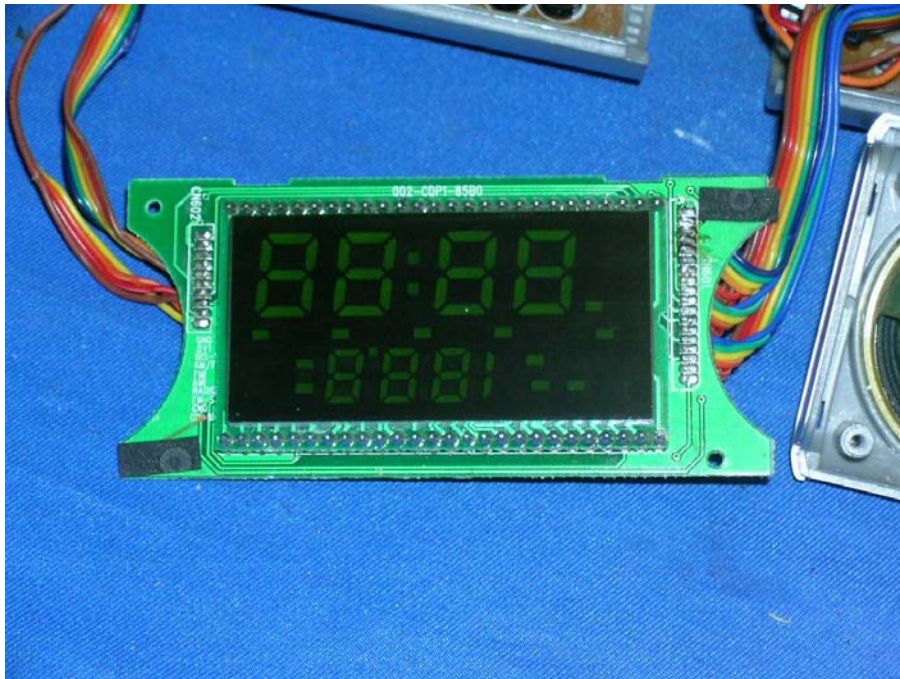
INTERTEK TESTING SERVICES

Internal photos

Headphone Jack, AC Power Jack, and Volume Switch rear side



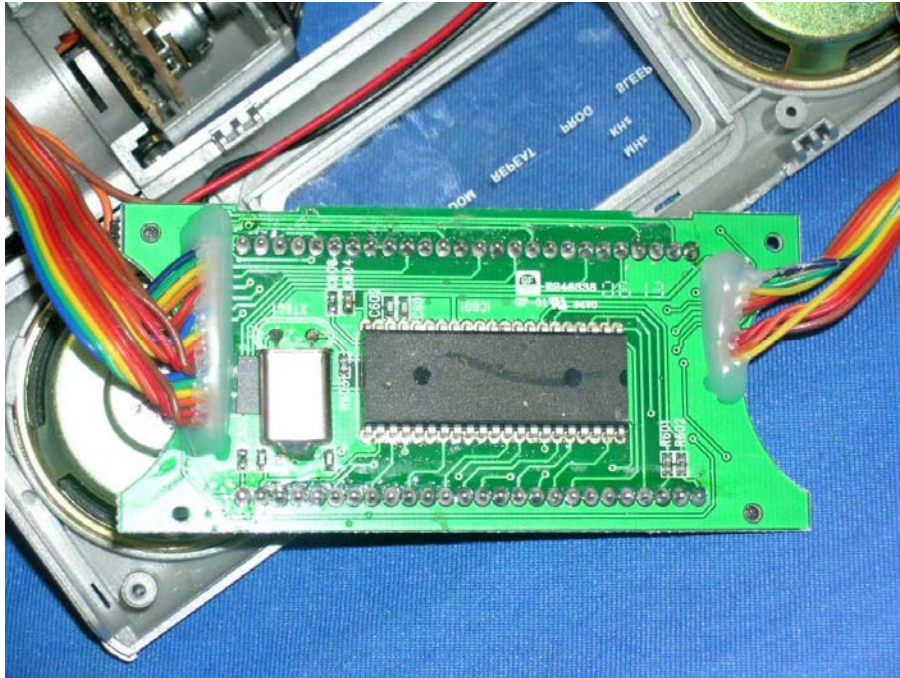
LCD display comp side



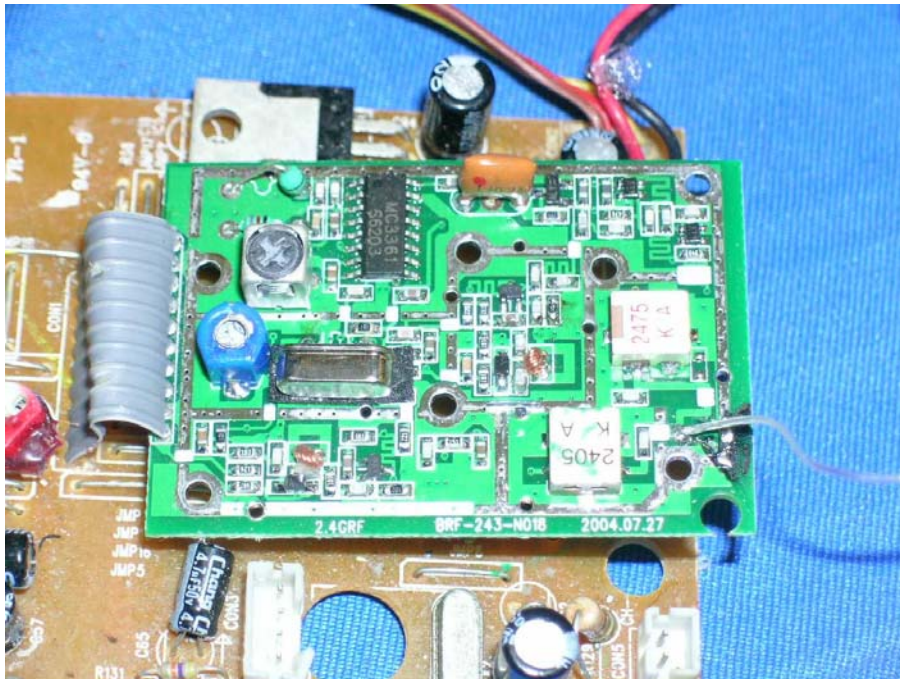
INTERTEK TESTING SERVICES

Internal photos

LCD display solder side



Base Unit Oscillator PCB comp side



INTERTEK TESTING SERVICES

Internal photos

Base Unit Oscillator PCB solder side

