

INFINITER™

LASER REMOTE

Laser Pointer with Remote Controller

I

Model No:LR-2



Contents

Features	1
System Requirements.....	2
Replacing the Battery	3
Operation Condition	4
Use the Laser Pointer Function	5
Use the Page Controller Function	
A. For Windows 2000 / XP / Mac OS 9.0 above	6
B. For Windows 98 (With Flash Memory)	8
C. For Windows 98 (Without Flash Memory)	16
Specifications.....	20
FCC Statement	21

Features

LR 2 achieves perfectly your presentation job !!!

- Wireless laser pointer with remote page up / page down control
- USB 1.1 connection, with plug & play function
- Light weight & pocket size pen shape design
- No software downloads & driver installation required
- Super bright blue led as function working indication
- FCC & CE certified
- Modulation frequency : 315 MHz / 433.92 MHz
- Remote control working range up to 50 feet (15 meters)
- Supported operating system : Win 98 / 2000 / XP/ Mac OS 9.0 above
- Powered by One AAA battery with burn time over 6 hours

System Requirements

Hardware

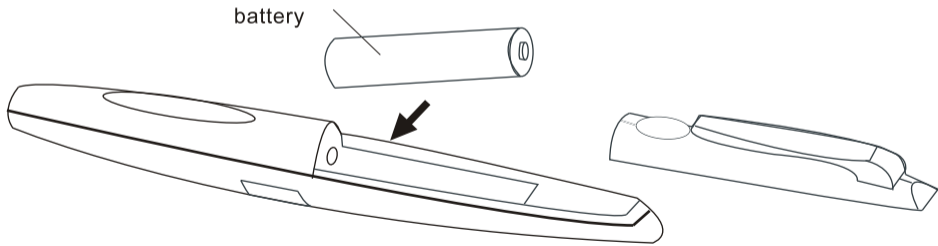
- PC with an Intel Pentium processor or equivalent 64 MB RAM or higher, depending on the operation system USB interface

Operation System

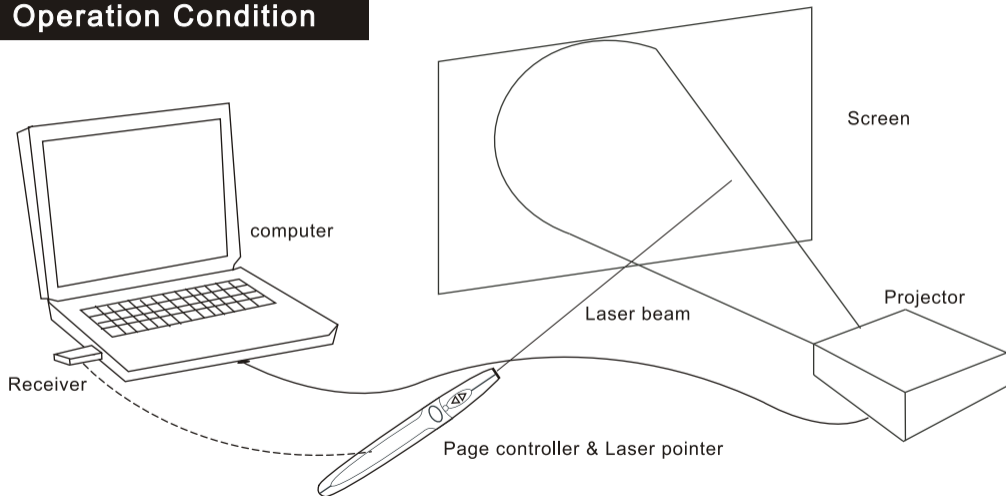
- Windows 98 / 2000 / XP / Mac OS 9.0 above

Replacing the Battery

- Open the battery cover and remove used battery and insert one new AAA battery as shown
- Replace the battery cover.

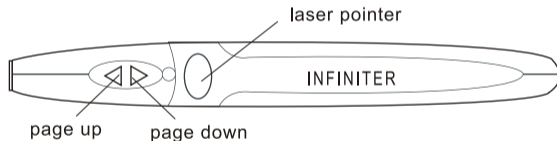


Operation Condition



Use the Laser Pointer Function

- Press the "Page up" or "Page down" button to control the working PowerPoint page up or down page by page.
- Press the "Laser Pointer" button to activate the laser pointer and release it to deactivate



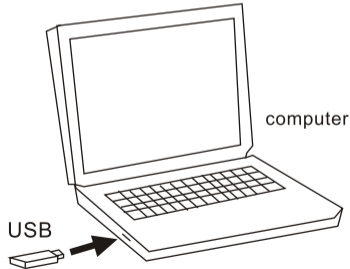
WARNING : Laser radiation is harmful to the eyes. Do not point laser beam at anyone's eyes.

CAUTION: Use of controls of adjustments or performance of procedures other than those specified herein may result in hazardous radiation exposure.

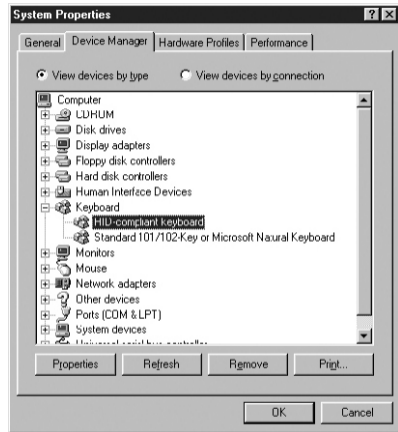
Use the Page Controller Function

A. For Windows 2000 / XP / Mac OS 9.0 above

- 1.To plug in the USB receiver into an available USB port on your computer.
- 2.Operation system identifies the receiver and begins installing the default driver. Follow the steps showed to complete the default driver installation.



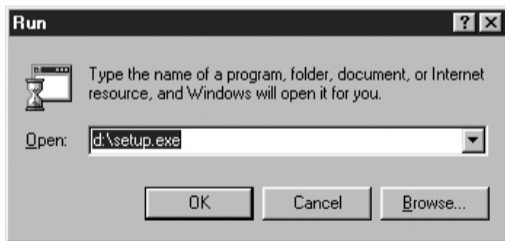
3. A new hardware "HID compliant keyboard" will be saved in the computer. Verify by checking the System Properties. (as shown in figure)
4. The LR2 is now available for use.



figure

B. For Windows 98 (With Flash Memory)

- If your Operation system is windows 98, finish the following steps before use LR2 with memory.
 1. Insert the enclosed CD-ROM
 2. Follow the Auto-Run software wizard to install the driver for flash memory or find out the position of CD-ROM in "Windows Explore" and execute the "Setup.exe" manually.



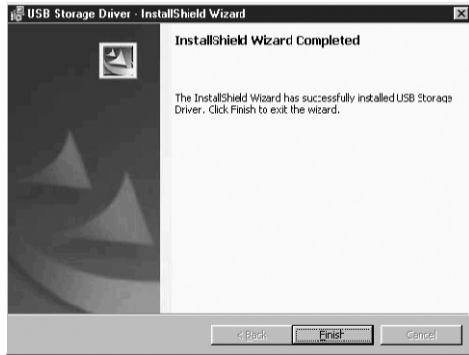
3. Please click "NEXT" button



4. Then, please click "NEXT" button



5. Install complete, please click "Finish"
6. Connect the RF Receiver to an available USB port



7. Windows will detect the new hardware "Generic USB Hub" and install appropriate software via the Add New Hardware Wizard, please click "NEXT" button



8. Please select the default and click "NEXT" button.



9. Please insert the Windows 98 disc into the CD-ROM then select the "CD-ROM drive" for next step.



10. Wizard is ready to install the best driver for this device. Please click "Next" for next step



11. The Wizard has finished the installation. Please click "Finish" to complete the installation process.



12. Windows will detect the new hardware "USB Composite Device" and install appropriate software via the Add New Hardware Wizard, please click "NEXT" button



13. Please select the default and click "NEXT" button



14. Please insert the Windows 98 disc into the CD-ROM then select the "CD-ROM drive" for next step.



15. Wizard is ready to install the best driver for this device. Please click "Next" for next step



16. The Wizard has finished the installation.
Please click "Finish" to complete the installation process .
17. Then follow the step C to complete the installation procedures.



C. For Windows 98 (Without Flash Memory)

- If your Operation system is windows 98,finish the following steps before use LR2 without memory.
 1. Connect the RF Receiver to an available USB port
 2. Windows will detect the new hardware (USB Human Interface Device) and install appropriate software via the Add New Hardware Wizard, please click"NEXT"button.



3. Please click "Next" for next step



4. Please select the default and click "NEXT" button



5. Please insert the Windows 98 disc into the CD-ROM then select the "CD-ROM drive" for next step



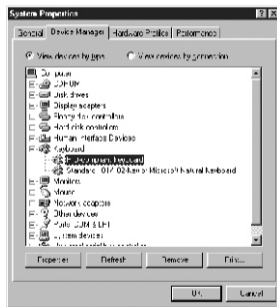
6. Wizard is ready to install the best driver for this device. Click "Next" for next step



7. The wizard has finished the installation. Click "Finish" to complete the installation process.
8. Follow any on-screen procedures to complete the default driver installation.



9. A new hardware "HID-compliant keyboard" will be saved in the computer. Verify by checking the System properties (as shown in the figure)
10. LR2 now is available for use.



figure

*Attention: some of older computer must enable the "USB Keyboard" function in BIOS. Please refer to your computer setup manual.

Specifications

Remote Controller

- Transmission distance : 50 feet (15 meters)
- Laser wavelength : 630 ~ 670 nm
- Output power : CL IIIa < 5mW ; CL II < 1 mW
- Battery : AAA 1.5V x 1
- Modulation frequency : 433.92 / 315 MHz
- Battery burn time: 6 hours
- Dimensions (L x W x H) : 5.7" x 0.7 " x 0.8 "
(14.5 cm x 1.7 cm x 2 cm)
- Weight : 1 oz (27g) - incl. Battery

USB Receiver

- Interface : USB 1.1
- OS supported : Windows 98, 2000, XP, Mac OS 9.0 above
- Power : DC 5V, 500mA Max
- Dimensions (L x W x H) :2.9" x 0.9" x 0.6"
(75.5cm x 23.3 cm x 15.5 cm)
- Weight :0.5 oz(13 g)

Federal Communication Commission(FCC) Statement

This Equipment has been tested and found to comply with the limits for FCC, pursuant to Part 15 of the FCC rules. These limits are designed to provide reasonable protection against harmful interference in a residential installation.

This equipment generates, uses and can radiate radio frequency energy and, if not installed and used in accordance with the instruction, may cause harmful interference to radio communication. However, there is no guarantee that interference will not occur in a particular installation.

If this equipment does cause harmful interference to radio or television reception, which can be determined by turning the equipment off and on, the user is encouraged to try to correct the interference by one or more of the following measures:

Federal Communication Commission(FCC) Statement

Reorient or relocate the receiver antenna.

- Increase the separation between the equipment and receiver.
- Connect the equipment into an outlet on a circuit different from that to which the receiver is connected.

Consult the dealer or an experienced radio/TV technician for help.

You are cautioned that changes or modification not expressly approved by the party responsible for compliance could void your authority to operate the equipment.

DISPOSAL OF BATTERIES

- Batteries must not belong to domestic waste.
- As a consumer you are obliged to give back all used batteries. You can hand in old batteries to the public as assembly points in your municipality or everywhere you can buy batteries of the relevant sort.
- You will find the following symbols on harmful substances containing batteries:

<http://www.infiniter.com>



**Patent
pending**

