



Model: SF13PB

1. Operation instruction

1.1 LED torch using

Under fully charged, the energy-saving LED torch will last for above 200 hours. LED torch will be turned off automatically 15 minutes later when it is bright.

Power on — Press and hold the button for 2 seconds;

Power off — Release the button, and again, press and hold the button for 2 seconds.

1.2 Battery Indicator

1 power indicator and 4 battery level indicators, thus making you can get the power bank's electricity condition easily. Show as follows:

Battery level indicators	light 1 indicator and flashing	Light 1 indicator	Light 2 indicators	Light 3 indicators	Light 4 indicators
SF13PB capacity	<15%	15%~25%	25%~50%	50%~75%	75%~100%

1.3 Charging

Equipped with a Micro double function data line. Charging SF13PB with USB input interface, charging the other devices with output interface.



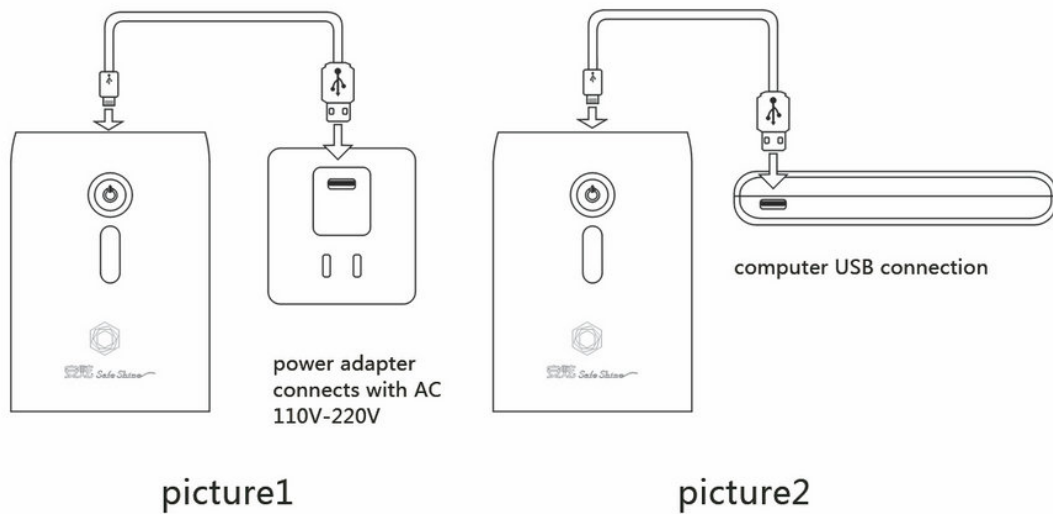
2. Charging for the other devices

SF13PB is used to charge digital communication products with DC-5V input. There is a double function data wire which is compatible to most mobile phone and many other digital communication products.



3. Charging for SF13PB

3.1 Use Micro data wire to charge SF13PB;



3.2 Suggest using adapter for charging, showed as following picture 1;

3.3 Connect USB interface to charge SF13PB is also allowed, showed as following picture 2.

Remarks:

- (1) SF13PB supply with a big capacity, charging time is about 10 hours, also depending on the actual condition.
- (2) Please check if the wire is normal or not, or if the connection interface stable or not, when you find SF13PB can not be charged. Suggest using duly qualified power adapter for charging.
- (3) The power bank exist transformation efficiency; therefore, its capacity is not equal with the electricity that chargeable.

4. Charging condition

4.1 Charging other device by SF13PB

4.1.1 If power indicate light is red, means that the device is on charging.

4.1.2 If power indicate light is blue, means that the device has been charged full.

4.1.3 Electricity quantity indicate lights are bright, it shows the remainder power of SF13PB.

4.1.4 When the power quantity is lower than 25%, the SF13PB will remind you to recharge by beep sound at every time you start up the power bank; besides, it also will remind you every half an hour by sound. (This charge remind function can be closed temporarily by double click the power button, when you hear tick sounds like "tick tick tick", it means that it will be closed. However, the SF13PB will recover the remind function 10 hours later; the remind function will

also abolish automatically if the power bank has been charged for more than 25% electricity quantity.)

4.2 When SF13PB on charging condition:

4.2.1 Power indicate light is red, means that SF13PB is on charging condition;

4.2.2 Electricity quantity indicate light twinkle at the relevant position, it shows the current electricity quantity of SF13PB.

4.2.3 Power indicate light is blue, means that SF13PB has been charged full.

5. Connecting with Apple devices with Bluetooth 4.0(e.g. iPhone 4S, iPhone5, new iPad, etc.)

SF13PB can connect with Apple intelligent device by low power consumption Bluetooth4.0, thus achieving the functions of loss prevention, theft prevention and searching for each other.

5.1 Bluetooth basic operation of SF13PB.

5.1.1 Turning on Bluetooth: pressing power button of SF13PB for 3 seconds, until the device tick for once.(The function only works for Apple devices under pairing status.)

5.1.2 Turning off Bluetooth: pressing power button of SF13PB for 5 seconds, until the device appear sounds like 'tick-tick tick'. Release the button and quickly double click the button within 10 seconds, Bluetooth will be closed till the device "tick" for once.

5.1.3 Pairing Bluetooth: pressing power button for 10 seconds, until the device 'tick-tick tick-tick tick tick', loosen the button and quickly double click the button within 10 seconds, Bluetooth device will get into pairing condition till the device "tick" for once.

5.1.4 Muting: pressing the power button can abolish the alarm when the SF13PB is on warning condition; it will abolish mute condition automatically if power bank get connection with Apple devices again.

5.2 Pairing with Apple device

5.2.1 Software download

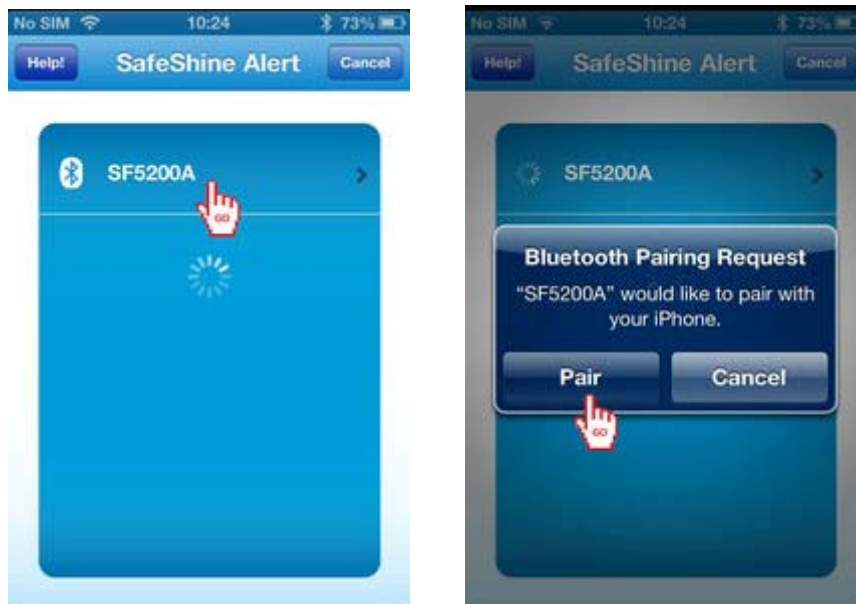
Download and install "Safeshine Alert" from "App Store" on Apple device.

5.2.2 Paring of SF13PB and Apple device

(1) Turn on Bluetooth: Press *Home* button, tap "Settings" and slide the "Bluetooth" button to turn it on.

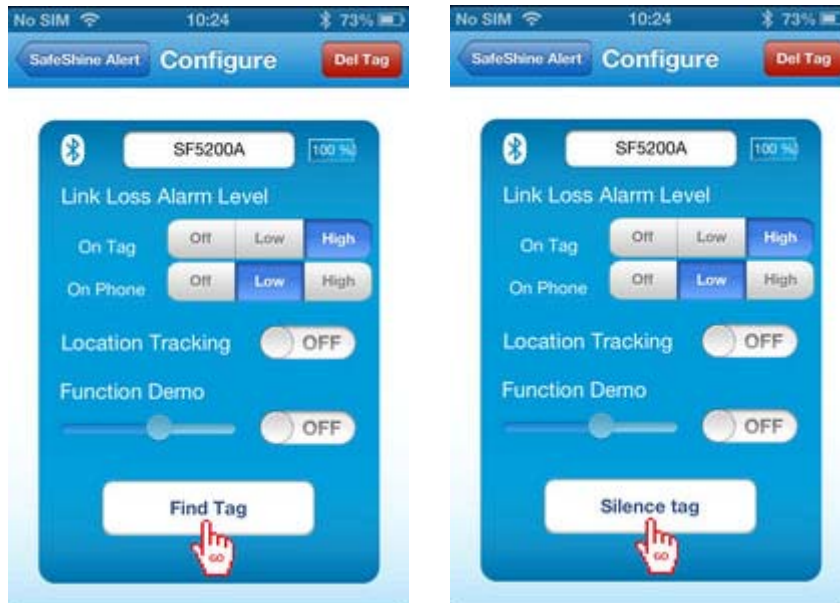


(2) Run “Safeshine Alert” and tap “Add tag”, the system will start searching for “SF13PB”.



(3) Taping the power button for about 10 seconds, The SF13PB will tick for 3 times, sounds like “tick-tick tick-tick tick tick”, then double-click on it, the Apple device will show “SF13PB” which means the SF13PB is ready for pairing.

Press ”pair” and then tap “SF13PB”, the appearing screen as below:



Press “find tag”, the SF13PB will alarm; press “silence tag”, it will stop. Then, the pairing connection is settled.

5.2.3 Using SF13PB to find Apple device

Quickly double-click on power button of SF13PB will begin the search for Apple device, and then Apple device will alarm or make a beep sound.

Remarks: when the alarm voice could not be stopped, please double-click the power button of SF13PB, there will be information window, press OK button will stop the alarm.

5.3 Re-pairing setting

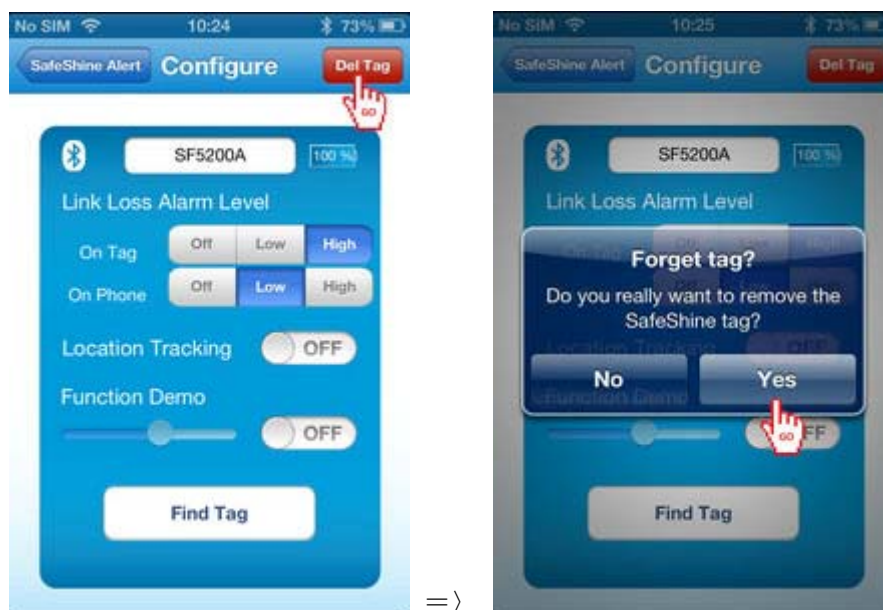
F5200A may lose connection with its pairing Apple device normally because of miss-operation, those cases will need repairing setting. (One typical miss-operation is to press the power button for a long time and the device gets into the pairing mode, thus making the original pair lose efficacy).

It need to delete the original pairing information, operation as follows:

5.3.1 Turn on Bluetooth, tap”forget the device”.



5.3.2 Run “Safeshine Alert”, get into configure page, tap “del tag” and select “Yes”:

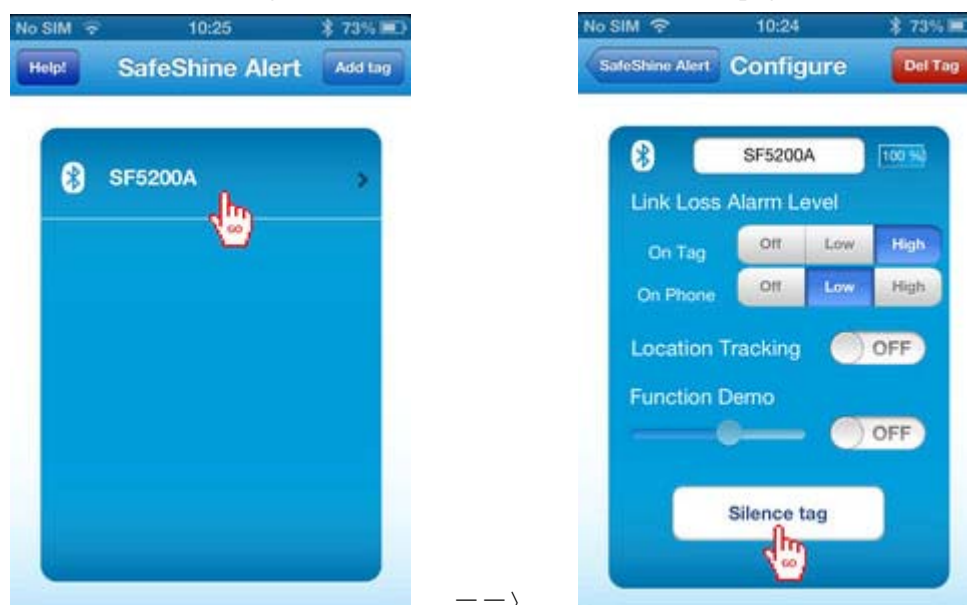


Then, repeat the steps as normal pairing and connection.

Remarks: If there are problems that “Safeshine Alert” could not get connection automatically with SF13PB, which caused by turning off Bluetooth (e.g. flight mode), there is no need to re-pair, just close the “Safeshine Alert” and restart it, then it will work normally.

5.4 Safeshine Alert software setting

Set the Link Loss Alarm Level of SF13PB and Apple device: Run "Safeshine Alert" , tap "SF13PB", and select Configure, the alarm level can be set under this page .



On Tag: High (Beep); Low (Beep); Off(None)

On Phone: High(Alarm+Message); Low(Message); Off(None)

Location tracking: Your phone will record the location of SF13PB after opening this service. When the SF13PB leave your phone, you may check the location before lost through “lost” button (this function should open your phone’s location service function).



Find tag: helps you to locate SF13PB

Remarks: if there is circumstance need your Apple device and SF13PB keep mute, please setting them as “off(none)” in software.

6. Safety information

Warnings: Fire, electric shock, damage or other damages maybe happen if you do not follow these safety instructions.

SF13PB adopts high quality LI-ION battery core, please rest assured that the use of it.

Do not collide, dismantle or pierce the SF13PB; do not through it into fire, water, or other high temperature circumstance; please recharge it with regular brand power adapter. Please stop to use

SF13PB if you find that it has bad phenomenon, for example, expansion, etc.

This device is not suitable to be used by the person who has low ability on physiology, perception and intelligence (include children), it is also not suitable to be used by the person who is lack of related experience and knowledge (unless they have supervisor who is responsible for their safety). Please take care of children, this device could not be their toys.

7. Accessories list

SF13PB intelligent portable power bank	x 1
Micro USB double function data wire	x 1
SF13PB user's manual	x 1

As there are different needs for accessories at different district, so the above accessories may be different. Please contact us if there are questions.

Consultation hot-line: 400-689-1115

Technical specification

Input:	DC 5V-1000mA
Output:	DC 5V-1000mA(MAX)
Capacity:	5200mAh
Size:	90x64x24mm
Wireless:	Low power consumption Bluetooth 4.0

Warning

This equipment has been tested and found to comply with the limits for a Class B digital device, pursuant to part 15 of the FCC Rules. These limits are designed to provide reasonable protection against harmful interference in a residential installation. This equipment generates, uses and can radiate radio frequency energy and, if not installed and used in accordance with the instructions, may cause harmful interference to radio communications. However, there is no guarantee that interference will not occur in a particular installation. If this equipment does cause harmful interference to radio or television reception, which can be determined by turning the equipment off and on, the user is encouraged to try to correct the interference by one or more of the following measures:

- Reorient or relocate the receiving antenna.
- Increase the separation between the equipment and receiver.
- Connect the equipment into an outlet on a circuit different from that to which the receiver is connected.
- Consult the dealer or an experienced radio/TV technician for help.

Caution: Any changes or modifications to this device not explicitly approved by manufacturer could void your authority to operate this equipment.

This device complies with part 15 of the FCC Rules. Operation is subject to the following two conditions: (1) This device may not cause harmful interference, and (2) this device must accept any interference received, including interference that may cause undesired operation.