

# Getting Started With Your Pepper Wireless Pad

Pepper™  
Wireless Pad



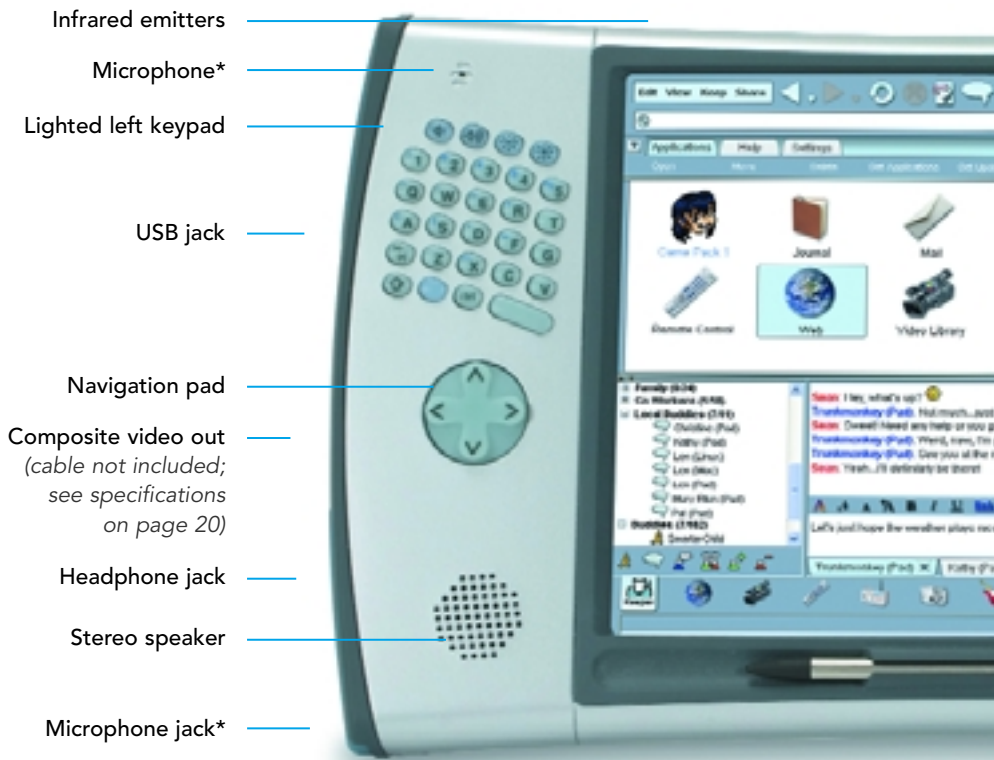


# Table of Contents

<b>Introduction</b>	<b>2</b>
<b>Setting up your Pepper wireless pad</b>	<b>5</b>
Charging the battery	5
Using the power button	6
Using the stylus and the touch screen	7
Using the keypads	8
Pepper Setup Helper	10
Downloading a Pepper Desktop program	11
<b>Using the Pepper pad software</b>	<b>12</b>
Getting media onto your pad	15
Cool features of the Pepper pad	15
Keeping Web clippings	15
Sharing from your pad	16
Surfing the Web	16
Using e-mail	16
Using instant messaging	17
Using a keyboard and mouse	18
Getting Help	18
Troubleshooting	19
<b>Pepper wireless pad specifications</b>	<b>20</b>
<b>Pepper Desktop program requirements</b>	<b>20</b>
<b>Index</b>	<b>21</b>
<b>FCC Information</b>	<b>22</b>

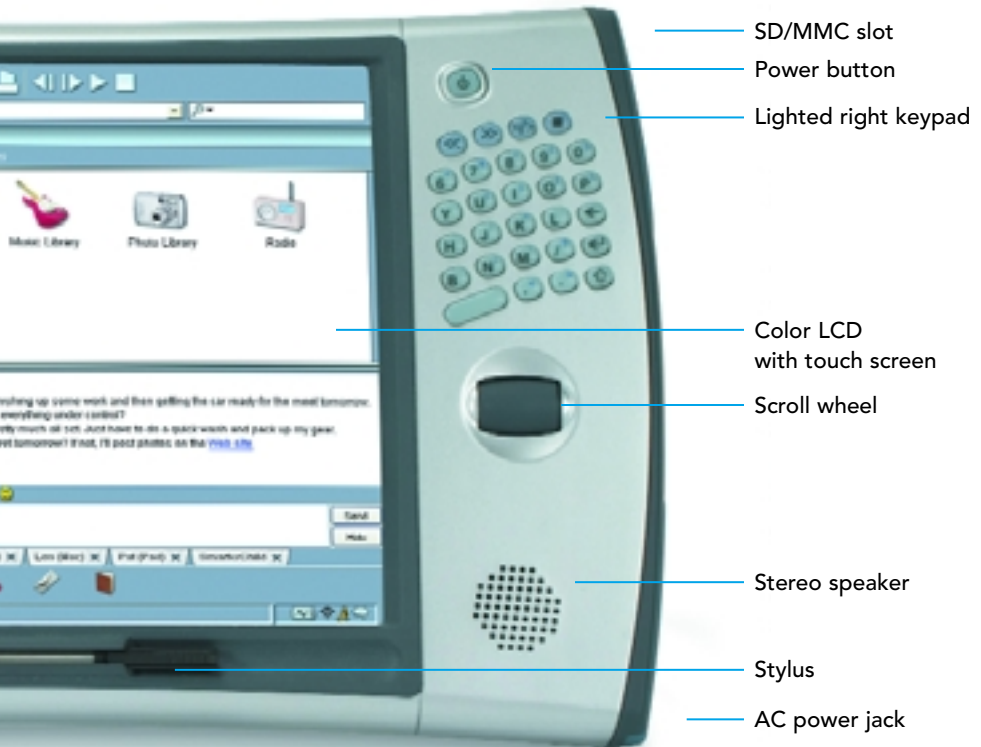
# Introduction

The new Pepper wireless pad is a portable device that you can use to connect to the Internet anywhere a Wi-Fi® network with broadband access is available.



\*Microphone/Microphone jack: not active;  
functionality will be added in a future update.

Because everything is stored on the Pepper pad, you can also use your pad offline to write e-mail to send later, to listen to music you have downloaded, and to view clippings from Web pages.



## Your pad includes the following applications:



### Web Browser

Directly access the Web with the Mozilla™ based browser. Keep and organize your bookmarks and Web page clippings. Shop. Read newspapers. Do research.



### E-Mail

Send and receive e-mail using the POP3- and IMAP4-compatible Mail application. Mail downloads all your messages to your pad from your broadband provider or corporate e-mail server, remembers every address you have sent mail to, and automatically completes known addresses.



### Instant Messaging

Stay in touch with your AOL® IM buddies.



### Internet Radio

Listen to streaming radio while you're doing other things like writing and reading e-mail or writing in your journal.



### Journal

Explore your thoughts, plans, and ideas. Use the rich text editor and add Web clippings to journal pages to create a look that is uniquely your own.



### TV Remote Control

Control your TV, DVD, VCR, and CD players, and free yourself from a multitude of separate remote control devices.



### Music, Video, and Photo Libraries

Collect your digital media in the libraries, and let the libraries organize them for you. Listen to MP3s, watch MPEGs, and look at your digital photos (and slide shows, too).



# Setting up your Pepper wireless pad

The first time you turn on your Pepper pad, the Pepper Setup Helper guides you through the few steps necessary to get your pad ready to use.

When you take your pad other places—to work, the airport, the library, a distant city—you'll have to connect to new Wi-Fi networks, but this will be quick and easy.

The following sections briefly describe the setting up process and some of the features of your pad.

## Charging the battery

*Note: Before you can use the battery to run your pad, you need to charge it. Although you can set up your pad and use it while the battery is charging, charging takes more time if the pad is active.*

### To charge the battery:

1. Open the rubber flap on the lower right side of the pad.
2. Plug the power cord into the AC power jack and into a power outlet.

Charging takes less than two hours if the pad is in sleep mode or turned off. It may take up to six hours if there is a great deal of activity. The small light next to the jack is yellow while the battery is charging and green when the battery is charged and the pad is plugged in. When the pad is using the battery for power, this light is off.

Once the battery is charged, it holds the charge for approximately four hours of use or up to a week if the pad is in sleep mode or turned off. If you are using your pad for things that require little power, such as listening to music with the screen dimmed, the charge will last longer than if you are using it for activities like watching movies or browsing the Web that require more power.

You can plug your Pepper pad in at night and charge the battery while you sleep. The pad will be ready to use wherever you go the next day. The battery cannot be overcharged, so you don't need to check on your pad while it is plugged in.



## Using the power button

The power button is on the top right of the Pepper pad. When your pad is on, this button is lit.

You always use this button to turn the pad on.

You can also use this button to put the pad to sleep or to turn it off completely.

## Putting your pad to sleep

When you haven't used your Pepper pad for a period of time (the default is 10 minutes), the pad goes to sleep in order to conserve the battery charge. When the pad is sleeping, the power light pulses slowly.

When you turn your pad on after it has been sleeping, everything starts up instantly exactly where it was when the pad went to sleep. After the pad has been in sleep mode, it may take up to 15 seconds to establish a connection to a wireless network.

If you know you won't be using your pad for a half an hour or so, you may want to put it to sleep manually. To put your pad to sleep manually, press the power button briefly.



## Turning your pad off completely

*Note: The Pepper pad is designed to be left on or sleeping. We recommend that you turn your pad off only if you know you will not be using it for several days.*

If you do turn your Pepper pad off completely, the icons for the applications you were using are still displayed at the bottom of the screen when you turn the pad on again. You can display the last page you accessed in one of these applications by just tapping its icon.

To turn your pad off, press the power button for at least three seconds.

When the pad is off, the power light is off as well.

## Using the stylus and the touch screen

The Pepper pad has a touch screen, and the stylus provides an easy way to make a selection or to choose a place to enter text.

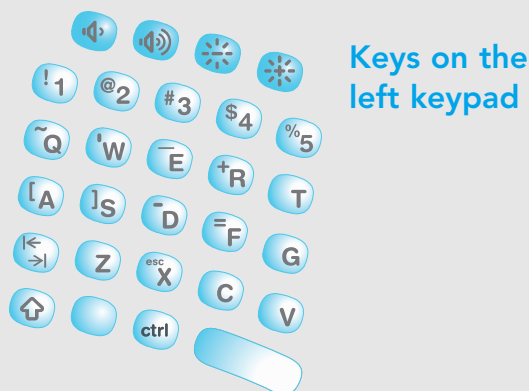
Use the stylus with the touch screen as you would use a mouse. A tap is like the click of the left mouse button. A tap does things like select an item, open a Web page, move the cursor from one part of the screen to another, or put a check in a box. When you press the function button and then touch the stylus to the screen, the stylus acts like the right mouse button and displays a menu if one is available.

### There are several other ways to move around in your Pepper pad:

- use the arrow keys on the navigation pad to move in all four directions and to highlight items; press the center of the navigation pad or the Enter key to play a song in Music Library, open a message in Mail, display a photo in Photo Library
- use the scroll wheel on the right to move up and down on any page with a scroll bar
- use a mouse (see “Using a keyboard and mouse” on page 18)
- use your finger instead of a stylus

## Using the keypads

The Pepper pad uses the standard QWERTY arrangement with the keys split between the left and right keypads.



### Key Symbols

*Note: For the Shift, Enter, Tab, and Backspace keys, the Pepper keypads use the symbols that are standard on computer keyboards.*



**Volume control** for media players



**Screen Brightness**



**Tab**



**Function** (light blue key) + any key with a blue character on it inserts the blue character. The Function key makes it possible for some alphabetical keys to provide three characters (for example, r, R with the Shift key, and + with the Function key). Press and release the Function key and then press the second key.



**Control** + key provides many control sequences (for example, ctrl-c copies selected text, and ctrl-v pastes it). Press and release the Control key and then press the second key.



**Shift key** for capital letters. Press and release the Shift key; then, press and release the second key.



**Space bar**



## Keys on the right keypad



**Power button** for turning pad on, putting it to sleep, and turning it off.



**Media control keys** for use with music, videos, and streaming radio broadcasts (from the top left, the keys are Rewind, Forward, Play/Pause, and Stop).



**Backspace key** for deleting text.



**Enter** for a new line of text or for choosing the primary action on a page (for example, if you select a song and press Enter, the song plays).



**Shift key** for capital letters. Press and release the Shift key; then, press and release the second key.



**Space bar**

## Pepper Setup Helper

Setting up your Pepper pad takes only a few minutes. The Pepper Setup Helper will present you with a series of simple screens in which you will enter information and perform setup tasks.

### The Setup Helper takes you through

- **Calibrating the touch screen**

To make sure that the screen is correctly adjusted, you need to calibrate the screen with the stylus before you use your pad.

- **Connecting to a wireless network**

The Pepper wireless pad communicates with any Wi-Fi network.

- **Setting the time zone**

The Pepper pad uses its date and time settings to stamp things like e-mail. Your pad has been set for one time zone, which may not be your time zone. Once you set the time zone, the pad will adjust the time and the date automatically.

- **Setting up an e-mail account**

You choose your broadband or corporate e-mail server and other settings.

- **Setting up instant messaging**

The pad gives you both local network and AOL<sup>®</sup> instant messaging.

You need to provide a few pieces of information before using these features. With Local Network IM, you can communicate with other Pepper pad and Pepper Desktop users on your network. With AOL IM, you can communicate with other AOL IM users.

If you ever need to re-calibrate the screen or change your network, time zone, or IM settings, open the Settings tab in the Keeper, and select the appropriate icon. To change your e-mail information, open the Settings tab in the Mail application.

## Downloading the Pepper Desktop program

The Pepper Desktop program runs on a Windows computer (with a Macintosh version in development) and contains the same applications as the Pepper pad. You can use the Pepper Desktop program the same way you use your pad, but its two primary functions are as a backup for your pad and as one source of music, videos, and photos for your pad.

### To download and set up a Pepper Desktop program:

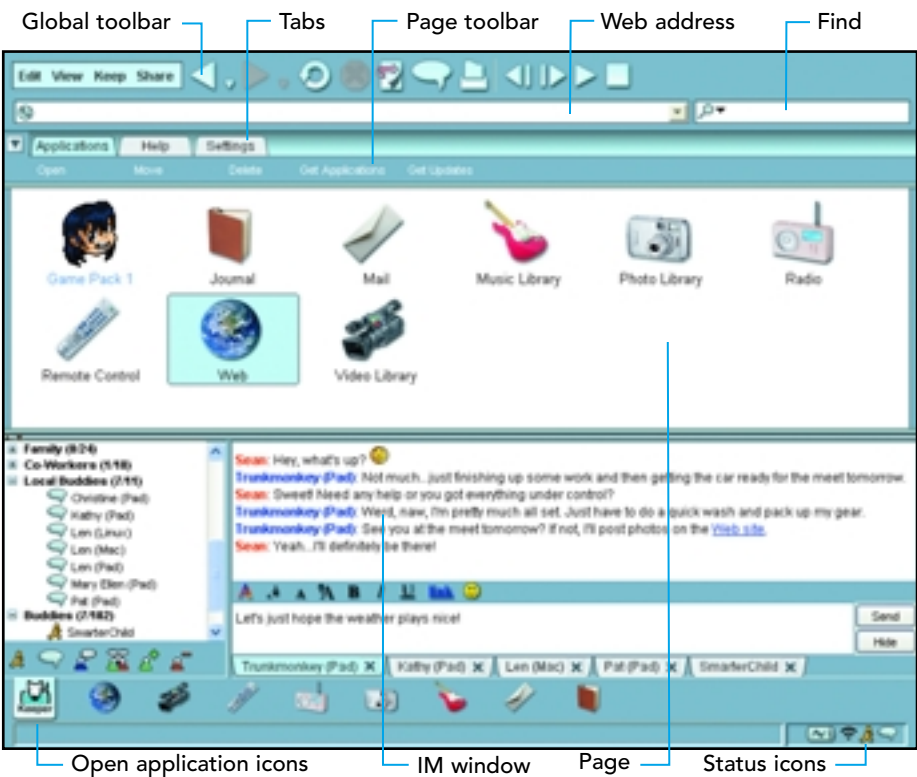
1. In a Web browser on the computer on which you plan to install the desktop program, enter [store.pepper.com](http://store.pepper.com).
2. Select the Pepper Desktop tab, and follow the downloading instructions.
3. Follow the Desktop Setup Helper instructions.

See “Getting media onto your pad” in the next section for instructions on getting media from your Pepper Desktop onto your pad.

See the Help tab in the Keeper on your pad for instructions on backing up your pad to your Pepper Desktop.

# Using the Pepper pad software

The software on the Pepper pad is intuitive to use. You'll be surfing the Web, reading your e-mail, watching videos, and downloading music in no time. This brief tour is designed to familiarize you with the interface.



## Applications and the Keeper application

*Note: Everything you put on your pad is saved automatically, so there is no **Save** button. When you no longer want to keep something on your pad, you simply delete it.*

The software on your Pepper pad is contained in a number of individual applications, such as the Web browser application, the Mail application, and the Video Library application. The Keeper is the application in which you keep track of all of the other applications and the cross-application settings. When your pad is turned on, the Keeper icon is displayed on the bottom left of the screen.

## Global toolbar

The global toolbar is always displayed at the top of the screen. The buttons in this toolbar provide a consistent way to perform actions that are common to Pepper applications. For example, use the **Back** button to display the previous page in an application and the **IM** button to open the instant messaging window.

Below the buttons in the global toolbar, there is a place to enter a Web address and a place to initiate a search.

## Page toolbar

The page toolbar changes depending on the application and what part of the application is being displayed. For example, there is a **Get Mail** button in the page toolbar on the Messages tab page in the Mail application but not in the page toolbar on the Drafts tab page.

## Application pages and tabs

Each application in the Pepper software is comprised of a set of pages or digital media organized into tabs. An application is something like a loose-leaf binder with tabs and pages within the tabs. The tabs in a Pepper application are displayed across the top of the application area below the global toolbar.

Most tabs display a list of the contents in the tab. For example, the Applications tab in the Keeper displays the icons for the other applications on your pad, and the Search Site tab in the Web browser application displays a list of familiar Web sites. To see the contents of a tab, tap the tab.

Tabs are one of the most powerful features of the Pepper software. For more information about tabs, see Help in the Keeper.

## Open application icons

At the bottom of the Pepper pad screen is an area that displays icons for all of the applications that you currently have open. The left-most open application icon is always the icon for the Keeper. Tapping one of these icons displays the application. You can switch between open applications simply by tapping different application icons.

## Instant messaging window

The IM window is the place where you send and receive AOL IM and local network IM messages. The illustration of the Pepper interface shows the IM window open, but it will be closed when you display the Keeper for the first time. See “Using instant messaging” on page 17 for more information about instant messaging.

## Status icons

Status icons are displayed on the bottom right of the screen. You will always see a battery icon here. When the battery is charging, this icon displays a lightning bolt. Otherwise, the icon shows the amount of charge left in the battery.

You will also always see the Wi-Fi connection icon. When your pad is not connected to a Wi-Fi network, this icon will be displayed with a red X through it.

An instant messaging icon will be displayed when you are logged on to AOL IM or local network IM.

While you are downloading something from the Web, a download icon will be displayed.

## Selecting, opening, and playing

The navigation pad below the left keypad gives you a convenient way to select an icon or an entry on a tab page. Then, you can open your selection (if it is an application or something like an e-mail message) or play it (if it is something like a video).

To select an icon or table entry, use one of the arrow keys to highlight the icon or entry.

To open the icon or play the entry, press the center of the navigation pad or the Enter key on the right keypad.

You can also play music or a video by pressing the Play media control key on the right keypad (see page 9 for an illustration of the symbols on media control keys) or by tapping the icon or the entry with the stylus or your finger.



## Getting media onto your pad

There are several ways to get your photos, music, and other content onto your pad:

- from a Universal Serial Bus (USB) storage device or a Secure Digital (SD) card
- via downloads from the Web
- by syncing with the Pepper Desktop program on your PC

### To use a USB device or an SD card to put content on your pad:

1. Plug a storage drive or digital camera into the USB port on the left side of your pad, or insert a memory card in the SD/MMC card slot on the right side.
2. In the Applications tab in the Keeper, tap the icon for one of the libraries.
3. In the library, tap the **Add** button in the page toolbar (for example, tap the **Add Photos** button in Photo Library).
4. On the menu, select one of the USB or memory card options.

### To use Sync to put content on your pad:

*Note: You can synchronize the contents of your pad and Pepper Desktop (that is, make the contents identical) from either the pad or the PC. In these instructions, you sync from your Pepper Desktop to your pad.*

1. On your Pepper pad, tap the Settings tab in the Keeper, tap the Sync icon, and set the Sync password.
2. Log on to the Local Network IM from both your pad and your Pepper Desktop.
3. In one of the libraries in your Pepper Desktop, tap the **Add** button in the page toolbar (for example, the **Add Photos** button in Photo Library).
4. On the menu, select either **Select files from disk** or **All files from a folder**.
5. Select files or a folder to put in the library.
6. On the Pepper Desktop, click the **Share** button in the global toolbar. Then select **Sync** with computer.
7. In the dialog box, select your pc, enter the password for your pad, and click **Sync**.

## Cool features of the Pepper pad

The Pepper pad is designed to make doing things on the Internet easy and fun. To this end, it has some features that will be new to you. Soon you'll wonder how you ever lived without them.

The **Keep** and **Share** buttons in the global toolbar represent features that are unique to the Pepper pad and the Pepper Desktop.

## Keeping Web clippings

The **Keep** button makes saving something from the Web simple. With **Keep**, you can save whole Web pages or selected text and images from a Web page for viewing later. Because these clippings are available when you are offline, as well as online, you can stock up on interesting news articles and catalog information for those times when you can't reach the Internet.

## Sharing from your pad

The **Share** button gives you a great way to share what you create on your Pepper pad with other Pepper pad and Pepper Desktop users. For example, you might create a journal about your vacation in a foreign country, add images from the Web, and share your journal with friends.

When you are collaborating with someone with a Pepper pad or a Pepper Desktop, the other person can add pages and images and share your application back to you. Your travel journal might be such a collaboration.

The sharable applications installed on your pad initially are Journal, Web, Internet Radio, and Remote Control. You can purchase other sharable applications from the Pepper Store by selecting the **Get Applications** button in the Applications page toolbar in the Keeper.

## Surfing the Web

The Pepper pad provides flexible and convenient Web browsing that you can tailor to your habits and interests.

### Surf the Web by

- entering a Web address in the address box below the global toolbar and pressing the Enter key
- selecting the Web icon in the Applications tab in the Keeper and browsing through the tabs
- selecting a bookmark or another link

Details about the various ways to browse are in the Help tab of the Web application.

## Using e-mail

### With the Mail application, you can

- download mail from your mail server
  - create and send messages
- Messages remain in the Drafts tab until you either send them or delete them.
- reply to messages
  - forward messages
  - create new tabs in which to organize your mail

### To launch the Mail application and download e-mail:

1. Tap the Applications tab in the Keeper.
2. Tap the Mail icon on the Applications page.
3. Tap the **Get Mail** button in the page toolbar.

Because the Mail application remains instantly available when its icon is displayed at the bottom of the screen, you can get new messages by tapping the Mail icon and then tapping the **Get Mail** button in the page toolbar in the Messages tab.

## Using instant messaging

The Pepper pad provides two kinds of instant messaging; AOL IM and Local Network IM. When you are logged onto either IM, its icon is displayed on the lower right of the screen.

### To open the IM window:

1. Tap the **IM** button in the Global toolbar.  
If an IM icon is displayed on the lower right of the screen, you can also open the window by tapping it.
2. For IM menu options, tap one of the two **IM** buttons on the lower left above the Keeper icon.

To close the IM window, either tap the **Hide** button in the IM window or the IM button in the Global toolbar.

## AOL Instant Messaging

*Note: If you didn't enter AOL IM information during setup, tap the IM icon in the Settings tab in the Keeper, and follow the instructions for doing so.*

If you had an AOL Instant Messaging account before you got your Pepper pad, your buddy lists are imported to the pad when you enter your AOL Screen Name and password and sign on.

If you are new to AOL IM, once you have a Screen Name and Password and sign on, you can set up buddy lists, send instant messages, and invite people for chats.

You can have only one AOL IM session running at a time using the same Screen Name. Therefore, if you are logged on from your pad and you log onto AOL IM from a computer with the same Screen Name, you will be logged out of the AOL IM session on your pad. Conversely, if you are logged onto AOL IM from a computer and log on from your pad, you will be logged out of the other AOL IM session.

## Local Network Instant Messaging

Everyone on your network who is using a Pepper pad or a Pepper Desktop program is automatically a member of your local IM group. The members of this group who can receive local messages have an icon next to their names in the IM window on your pad.

When you are logged onto Local Network IM, the Pepper icon is displayed on the lower right of the screen.

## Using a keyboard and mouse

*Note: A keyboard and a mouse are optional devices that may be used with a Pepper wireless pad.*

For entering large amounts of text, you can use a keyboard with your Pepper pad. For navigation and selection, you can use a mouse.

You can use a wireless Bluetooth® keyboard (and mouse) or connect a keyboard (or mouse) to your pad via the USB port. With a USB hub, you can connect both a keyboard and a mouse at the same time.

## Connecting a Bluetooth keyboard and mouse

*Note: In the future, you will be able to use other wireless devices with your pad. These instructions are for a Bluetooth keyboard; the basic process for making a connection between a Bluetooth device and a Pepper pad is the same for all devices.*

### To use a Bluetooth keyboard with your pad:

1. Put your keyboard in Discovery mode.  
For instructions, see your keyboard documentation.
2. Tap the Bluetooth icon in the Settings tab in the Keeper.
3. Follow the instructions on the Bluetooth Setup page.

## Getting Help

The Pepper pad is easy to use, and you probably won't need help very often, but you may appreciate your pad more quickly if you take a few minutes to familiarize yourself with what Help has to offer.

There is Help for the Pepper pad itself and for each application. Just look for the Help tabs. This section gives a brief overview of the Help tab in the Keeper.

The Help tab in the Keeper gives you instructions on using your pad and an overview of features that are common to most of the applications. It also contains hints for troubleshooting problems that may occur.

There is a report page in this Help tab that you can send to Pepper Support via the Internet when you have questions, problems, suggestions, or praise. Our users' experiences are very important to us, and we hope to hear from you.

In Help, you will find your software license, a privacy policy and acknowledgments of third-party software used by Pepper products.

## Troubleshooting

### If your Pepper pad won't turn on

If you can't turn your Pepper pad on, first make sure that the battery is charged or that the pad is plugged in. If you still can't turn it on and the pad has been at a cold temperature (below 40° F or 5° C), let it warm up and try turning it on again.

If your pad still won't turn on, contact Customer Service. If you have Web access from a computer, you can send e-mail to [support@pepper.com](mailto:support@pepper.com). If you don't have Web access, call Customer Service at (866) 288-1909, ext. 214.

### If you can't connect to your Wi-Fi network

Make sure that your Wi-Fi Access Point (AP) is set up and running and that you can connect a computer to the AP. If you can't connect a computer to the AP, refer to the documentation for your AP for troubleshooting information about setting up your hardware and network.

Make sure that you are not out of range of the AP.

Make sure that you spelled your network name (ssid) correctly and entered the correct key or passphrase on the Wi-Fi Settings page.

Check the security configuration for your AP to make sure that there are no restrictions that may be preventing you from connecting.

If you have set up your network not to broadcast its name, you won't see it in the list of available networks. However, you can enter the network name and key or passphrase on the Wi-Fi Settings page.

### Restarting your Pepper pad

In the unlikely event that your Pepper pad is unresponsive, you'll need to restart it. You won't lose what you've been doing, so restarting is not a big deal.

To restart your pad, turn it off and turn it back on.

# Pepper wireless pad specifications

## Processor

- Intel XScale PXA270 (624 MHz)

## Display

- 8.4" 800x600 SVGA TFT LCD
- Intel 2700G 2D/3D/MPEG multimedia accelerator
- 16 MB video RAM
- Composite video out jack (NTSC/PAL: requires a cable with a four conductor 3.5mm (1/8") plug on one end and three RCA plugs (red, white, and yellow) on the other end)

## Memory

- 256 MB SDRAM
- 16 MB Intel StrataFlash ROM

## Storage

- 20 GB 1.8" disk drive (ATA)

## Power

- 3.6Ah Lithium ION rechargeable battery
- 5V / 3A (15W) AC power adapter

## Software

- E-mail, Web Browsing, AOL® Instant Messaging™, Journal, Internet Radio, Remote Control
- Music, Photo & Video Libraries (MP3, JPG, GIF, MPEG-2, MPEG-4, AVI)
- Linux 2.4 (MontaVista™ CEE 3.1)
- Java 2, Mozilla® with Macromedia® Flash™
- Customizable & extensible user experience available in English, Korean and other languages upon request.

## Wi-Fi® Wireless LAN

- 802.11b
- WEP, WPA-Personal

## Wireless Peripherals

- Bluetooth® device support
- Dual IR emitters and IR receiver

## Wired Peripherals

- USB 1.1 Client/Host

## Expansion Slots

- SD/MMC card

## Audio

- 20-bit stereo CODEC
- Stereo speakers and headphone jack
- Built-in microphone and jack
- Stereo line out jack

## User Input

- Resistive touch screen with stylus
- Full split back lit QWERTY keypad
- Navigation pad
- Scroll wheel

## Physical

- Rugged and splash resistant
- 12.1" x 6.6" x 0.8" (309 x 175 x 20mm)
- 2.3 lbs (1043 grams)

# Pepper Desktop program requirements

Windows 98, 2000, ME or XP

400MHz Intel Pentium processor or better

128MB or more of RAM

Broadband Internet connection (recommended)

65,000-color SVGA display or better

# Index

## A

application  
     icons, 14  
     pages, 13  
     tabs, 13  
 applications, 4

## B

battery charging, 5  
 Bluetooth, connecting devices, 18

## D

description of pad, 2  
 desktop program  
     downloading, 11  
     requirements, 20

## E

e-mail, 16

## F

FCC information, 22

## G

getting content onto pad, 15  
 global toolbar, 13

## I

illustration  
     keypads, 8  
     Pepper wireless pad, 2  
     user interface, 12  
 instant messaging  
     AOL IM, 17  
     local network IM, 18  
     window, 14

## K

Keeper application, 13  
 key usage, 8  
 keyboard, using, 7, 18  
 keypads, 8  
 keys  
     brightness, 8  
     media control, 9  
     volume, 8

## M

media control keys, 9  
 mouse, using, 7, 18

## O

online help, 18

## P

pad specifications, 20  
 page toolbar, 13  
 Pepper Desktop program  
     downloading, 11  
     requirements, 20  
 Pepper Setup Helper, 10  
 power button, 6  
 preparing pad for use, 10  
 putting pad to sleep, 6

## S

saving Web clippings, 15  
 screen brightness keys, 8  
 setting up  
     Bluetooth keyboard, 18  
     Bluetooth mouse, 18  
     pad, 5, 10  
 sharing applications with other users, 16  
 sleep mode, 6  
 software, using, 12  
 specifications for pad, 20  
 status icons, 14  
 stylus and touch screen, 7

## T

tabs, 12  
 toolbars  
     global, 13  
     page, 13  
 touch screen and stylus, 7  
 troubleshooting, 17  
 turning pad  
     off, 7  
     on, 6

## V

volume control keys, 8

## W

Web browsing, 16

## FCC Information

*Note: This equipment has been tested and found to comply with the limits for a Class B digital device, pursuant to part 15 of the FCC Rules. These limits are designed to provide reasonable protection against harmful interference in a residential installation. This equipment generates, uses and can radiate radio frequency energy and, if not installed and used in accordance with the instructions, may cause harmful interference to radio communications. However, there is no guarantee that interference will not occur in a particular installation. If this equipment does cause harmful interference to radio or television reception, which can be determined by turning the equipment off and on, the user is encouraged to try to correct the interference by one or more of the following measures:*

- Reorient or relocate the receiving antenna.
- Increase the separation between the equipment and receiver.
- Connect the equipment into an outlet on a circuit different from that to which the receiver is connected.
- Consult the dealer or an experienced radio/TV technician for help.

## FCC Caution:

This equipment complies with FCC radiation exposure limits set forth for an uncontrolled environment. This device and its antenna(s) must not be co-located or operating in conjunction with any other antenna or transmitter. Changes or modifications not expressly approved by the party responsible for compliance could void the user's authority to operate the equipment.

## Radio Frequency Interference Requirements and SAR:

The FCC with its action in ET Docket 93-62 has adopted a safety standard for human exposure to Radio Frequency (RF) electromagnetic energy emitted by FCC certified equipment. The Pepper Wireless Pad meets the Human Exposure limits found in OET Bulletin 65, 2001, and ANSI/IEEE C95.1, 1992. Proper operation of this radio according to the instructions found in this manual will result in exposure substantially below the FCC's recommended limits.



## Notes

[illegible]

## Notes

This image shows a blank sheet of white paper with horizontal ruling lines. The lines are evenly spaced and run across the width of the page. There are no margins, text, or other markings on the paper.



© 2005 Pepper Computer, Inc. All Rights Reserved.  
Pepper, Pepper Computer and the Pepper logo are trademarks of Pepper Computer, Inc.

Pepper Computer, Inc.  
10 Maguire Rd., Suite 211  
Lexington, MA 02421  
[www.pepper.com](http://www.pepper.com)



Pepper™

Wireless Pad 11-15001

For Customer Service: send e-mail to [support@pepper.com](mailto:support@pepper.com) or call toll-free (866) 288-1909, ext. 214. Telephone support is available Monday-Friday, 9 a.m.-5 p.m. Eastern Time.  
For the latest information, select the Support tab at [store.pepper.com](http://store.pepper.com).