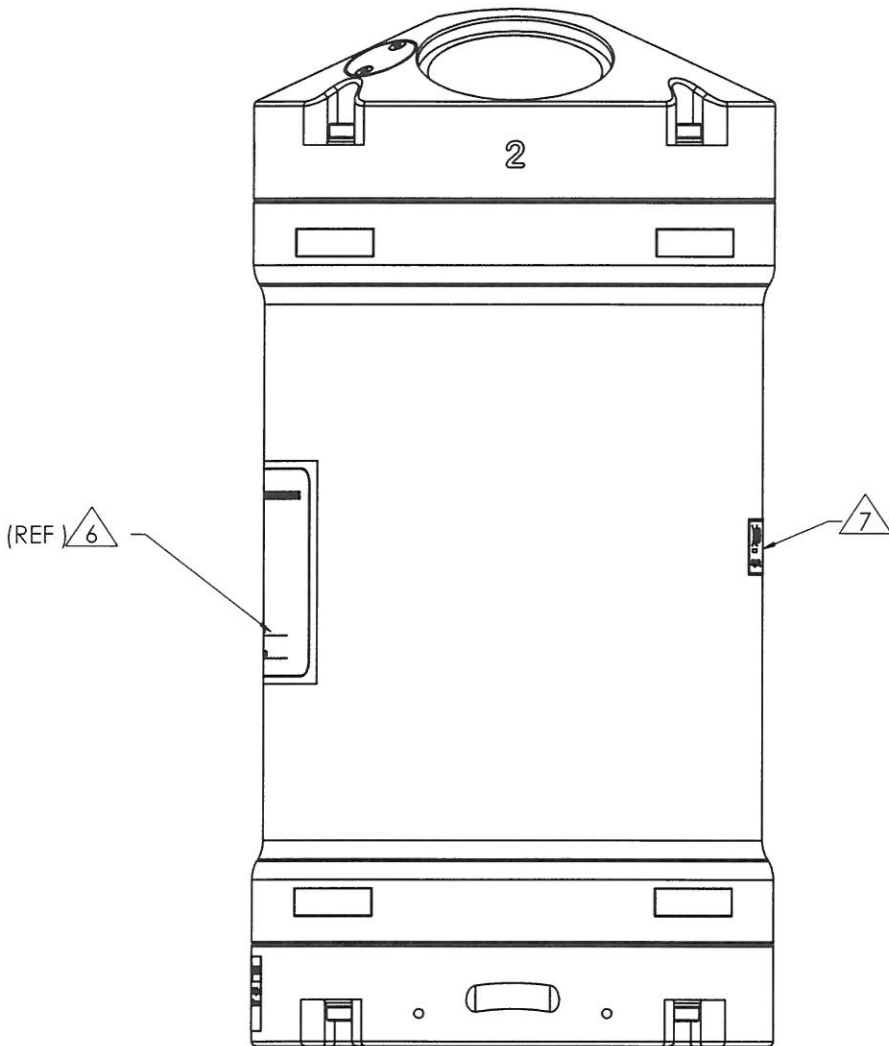


NOTES: UNLESS OTHERWISE SPECIFIED

1. DIMENSIONS AND TOLERANCES ARE IN INCHES PER ASME Y14.5-2009.
2. O-RING AND O-RING GROOVE SHALL BE FREE OF CRACKS, DUST, AND PARTICLES.
3. ALIGN NOTCHES ON XDCR SUBASSY, HOUSING SUBASSY, AND ENDCAP SUBASSY.
4. TORQUE M5X0.7 BOLT TO 15.0 ±1.0 IN-LB [1.7 ±0.1 N.m]
5. TORQUE M3X0.5 SCREW TO 4.0 ±0.5 IN-LB [0.45 ±0.05 N.m]
6. TRDI LABEL SHALL SHOW MODEL NUMBER AND SERIAL NUMBER PROVIDED WITH WORK ORDER.
7. COMPLIANCE LABEL SHALL SHOW MFG DATE USING YYYY/MM/DD FORMAT IN SPACE PROVIDED.
8. DESICCANT SHALL BE PLACED SUCH THAT IT DOES NOT INTERFERE WITH ELECTRONICS OR CABLES WHEN ENDCAP IS INSTALLED.
9. WIRELESS MODULE AND ANTENNA INSTALLATION:
 - a) PLUG ADAPTER BOARD WI-FI MODULE INTO DSP BOARD
 - b) PLACE ANTENNA PLATFORM ON TOP OF THE ADAPTER BOARD WI-FI MODULE SUCH THAT Ø.070" HOLE, LOCATED IN THE CORNER OF THE ANTENNA PLATFORM, IS CLOSEST TO THE CONNECTOR ON THE DSP BOARD.
 - c) SECURE ADAPTER BOARD WI-FI MODULE AND ANTENNA PLATFORM USING M1.6X6mm SCREWS. TWO OF THE SCREWS ARE TO GO THRU ANTENNA PLATFORM, THRU ADAPTER BOARD WI-FI MODULE, AND INTO DSP BOARD. THE SECOND TWO SCREW ARE TO GO THRU ADAPTER BOARD WI-FI MODULE, AND IN TO DSP BOARD. APPLY LOCTITE 222 TO SCREW THREADS.
 - d) PLACE ANTENNA ON TO ANTENNA PLATFORM SUCH THAT CABLE CONNECTION ON THE ANTENNA IS FACING MATING CONNECTION ON ADAPTER BOARD WI-FI MODULE. SECURE SELF-ADHESIVE ANTENNA ON TO ANTENNA PLATFORM BY REMOVING PROTECTIVE BACKING.
 - e) PLUG ANTENNA CABLE INTO ADAPTOR BOARD WI-FI MODULE.
 - f) CUT 1" WIDE ONE SIDED TAPE TO 1.5" LONG. REMOVE PROTECTIVE BACKING OFF AND ADHERE TO TOUCH SENSOR BOARD. TRIM OFF EXCESS MATERIAL ALONG TOUCH SENSOR BOARD. CAUTION SHALL BE TAKEN NOT TO DAMAGE THE SENSOR.
 - g) MOUNT TOUCH SENSOR BOARD AS SHOWN.
 - h) INSTALL TERMINAL LUG TO ONE OF THE M3X0.5 NYLON SCREW. FEED THE WIRE THRU THE CONNECTOR CUTOUT OF THE TOUCH SENSOR SHIELD AND SOLDER TO THE CENTER TERMINAL OF THE HEADER ON THE TOUCH SENSOR BOARD.
 - i) TORQUE M3 NYLON SCREW TO 1.2 IN-LB [0.14 N.m].
10. SECURE HOUSING CABLE AND STRAIN RELIEF TO ENDCAP AS SHOWN.
11. REMOVED PER ECO 4026.
12. BATTERY PACK CABLE CONNECTOR SHALL BE LEFT UNPLUGGED
13. CREATE AND AFFIX LABEL ON THE EXTERIOR WALL OF THE EMI SHIELD, BETWEEN BEAM 1&3.
THE LABEL WILL SHOW:
LINE1 : PART NUMBER AND CURRENT REVISION
LINE 2: SERIAL NUMBER -WILL BE PROVIDED BY THE WORK ORDER.



REVISION HISTORY					
ZONE	ECO#	REV	DESCRIPTION	DATE	APPROVED
		XA	DWG CREATED AT THIS REV PROTOTYPE RELEASE	110303	I.GAVRILYUK
		XB	ADDED NOTES 8 THRU 12 6/13/2011SM(IG)	110613	I.GAVRILYUK
		A	PRODUCTION RELEASE		
NOTE 9-C SH3 C7	3817	B	REPLACED #0 WASHERS WITH LOCKTITE 222 4/9/2012SM	120410	D.GREENE
SH1& SH2 B8	3856	C	ADDED FLAGNOTE 13. 120515FV	120529	D.GREENE
SH2 B7,B8, C7,C8	3883	D	SEPARATE MAIN ELECTRONIC ASSY FROM THE XDCR AND PLACEMENT OF LABEL TO EMI SHIELD 120613FV	120619	D.GREENE
SH3	4026	E	ELEC; CHGD WIFI ENDCAP; ADDED SHIELD TO TOUCH SENSOR 12/19/2012SM	130104	M.EDELHAUSER
SH3	4060	F	UPDATE COMPASS MTG VIEW (ECO 4061) 2/11/2013SM	130212	D.G.

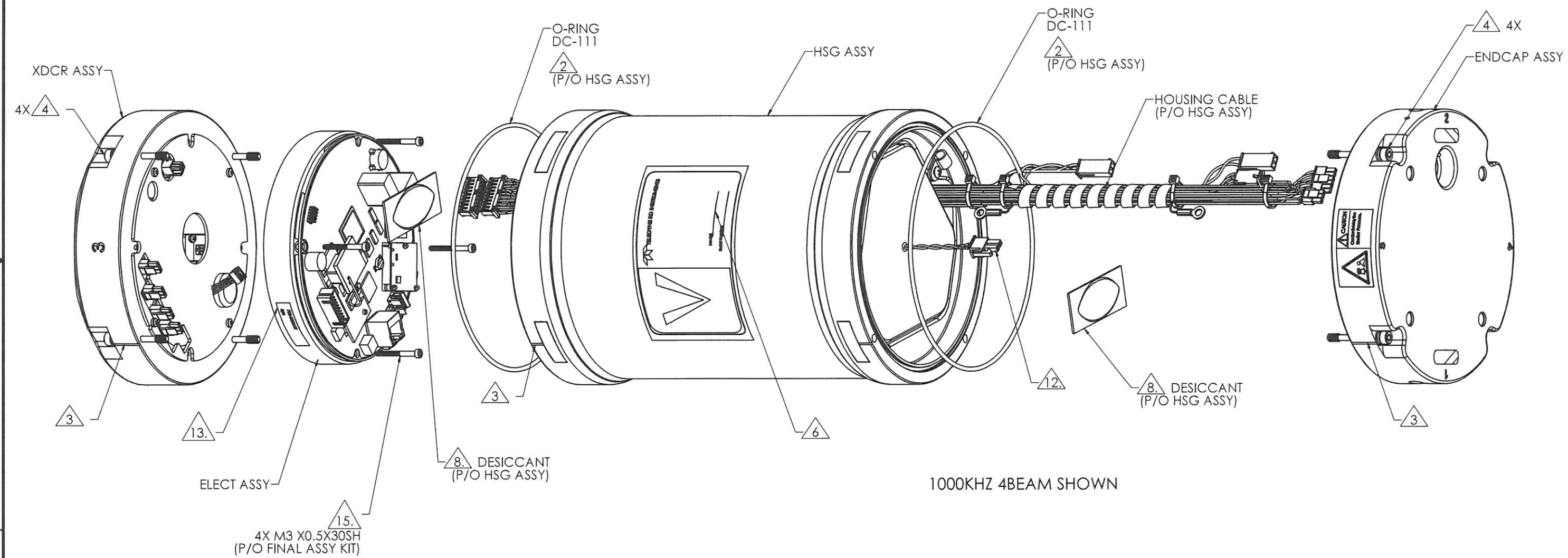
FOR 300KHZ, 500KHZ AND 5BEAM OPTION VIEWS, SEE OUTLINE/INSTALLATION DWG 96D-6004
FOR INTERNAL CONNECTION DIAGRAM, SEE DWG 95D-6009

PROPRIETARY INFORMATION

THIS DOCUMENT CONTAINS INFORMATION
PROPRIETARY TO TELEDYNE RD INSTRUMENTS,
AND SHALL NOT BE DISCLOSED, DUPLICATED
OR USED AS A BASIS FOR DESIGN,
MANUFACTURE, OR SALE OF APPARATUS
WITHOUT EXPRESS WRITTEN PERMISSION
OF TELEDYNE RD INSTRUMENTS.

THIRD ANGLE PROJECTION		UNLESS OTHERWISE SPECIFIED: DIMENSIONS ARE IN INCHES.		CONTRACT NUMBER		TELEDYNE RD Instruments		14020 STOWE DRIVE POWAY CALIFORNIA 92064	
		TOLERANCES: DECIMALS .XX ±.01 .XXX ±.005 ANGLES ±1.5° DRILLED HOLES: Ø.0-Ø.500 +.005 -.002 Ø.501-Ø1.000 +.007 -.004		APPROVALS		TITLE: TOP ASSY, SENTINEL-V WITH BTRY PK, SC ENDCAP			
DRAWN: S. MESSER		DATE 110224		ENGR/DIGN: I.GAVRILYUK		DATE 110303			
CHECKED: C.ROSENAU		DATE 110614		APPROVED: M.EDELHAUSER		DATE 110616			
RELEASED: D.GREENE		DATE 110617		SIZE D		CAGE CODE 9W050		DWG NO. 70D-9004	
APPLICATION DO NOT SCALE DRAWING				SCALE NONE		SHEET 1 OF 3			

REVISION HISTORY					
ZONE	ECO#	REV	DESCRIPTION	DATE	APPROVED
			SEE SHEET ONE		



PROPRIETARY INFORMATION

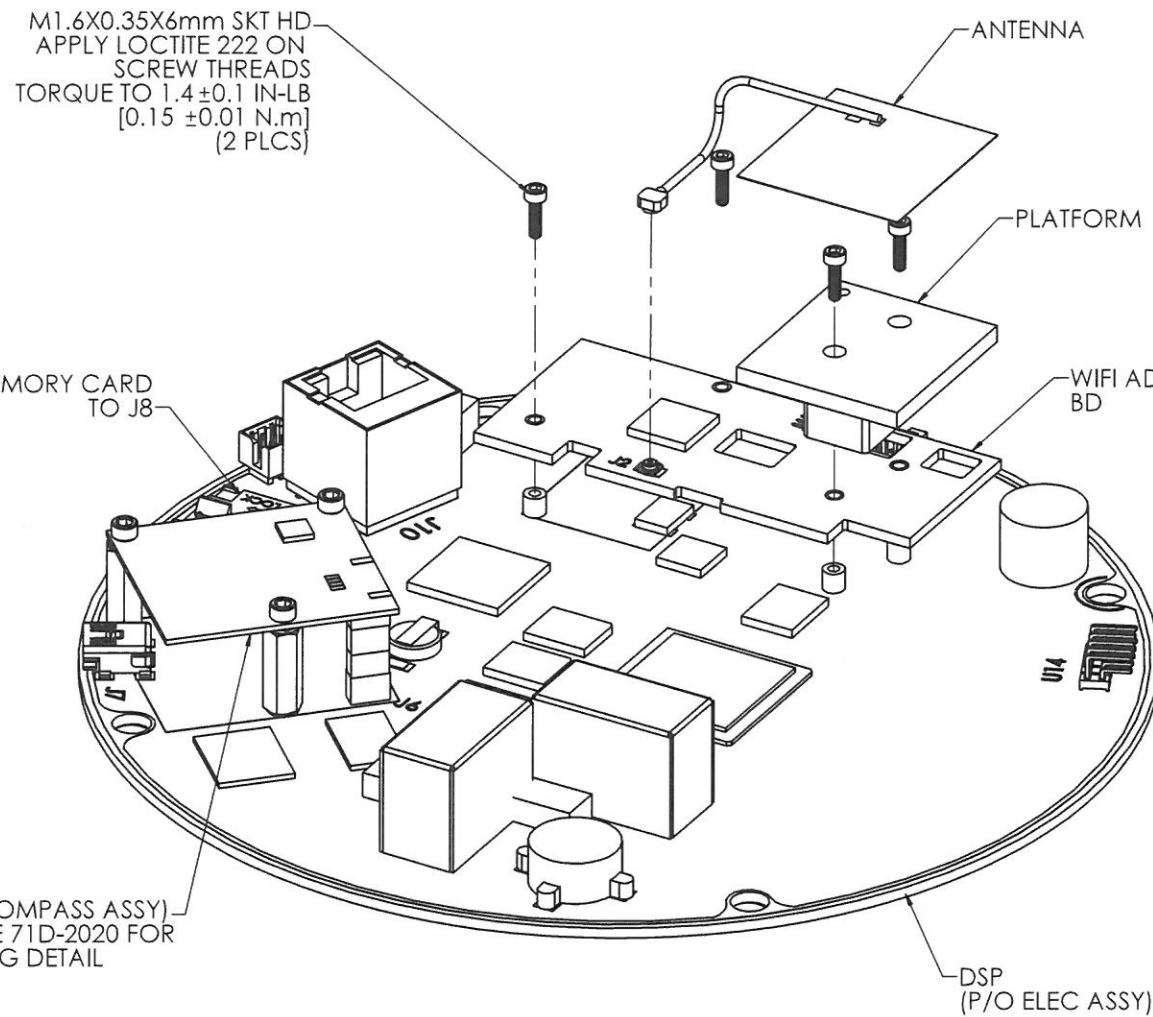
THIS DOCUMENT CONTAINS INFORMATION PROPRIETARY TO TELEDYNE RD INSTRUMENTS, AND SHALL NOT BE DISCLOSED, DUPLICATED OR USED AS A BASIS FOR DESIGN, MANUFACTURE, OR SALE OF APPARATUS WITHOUT EXPRESS WRITTEN PERMISSION OF TELEDYNE RD INSTRUMENTS.

TITLE: TOP ASSY, SENTINEL-V WITH BTRY PK, SC ENDCAP

SIZE	CAGE CODE	DWG NO.	REV
D	9W050	70D-9004	F

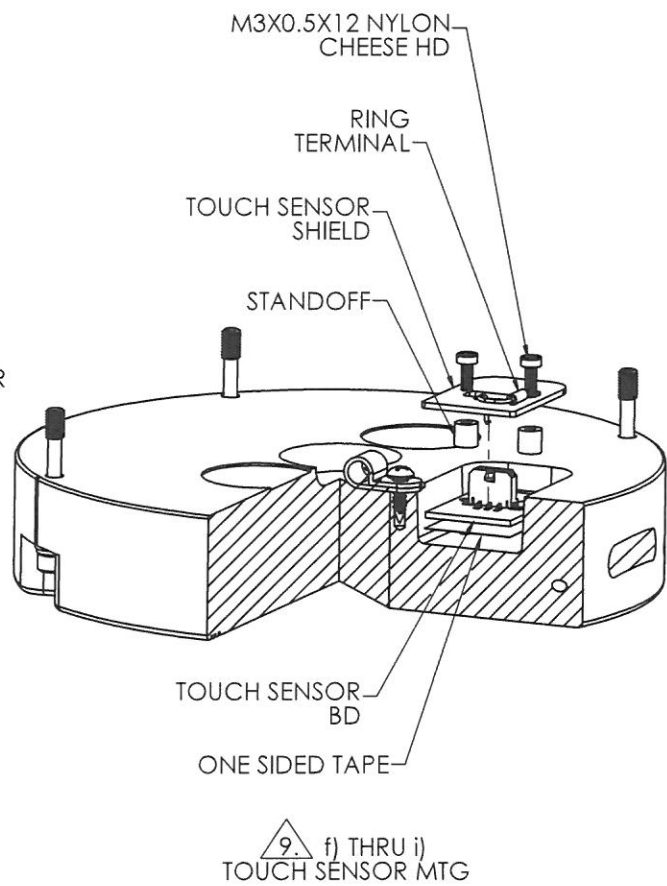
SCALE 1:1 SHEET 2 OF 3

REVISION HISTORY					
ZONE	ECO#	REV	DESCRIPTION	DATE	APPROVED
			SEE SHEET ONE		

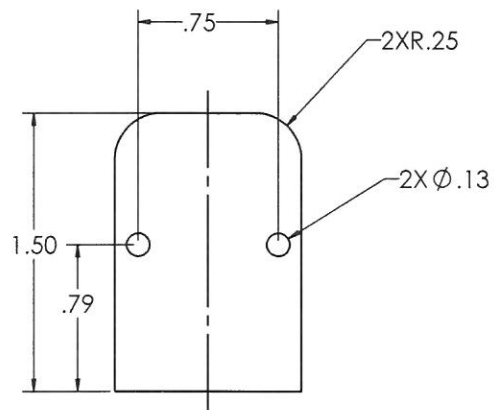
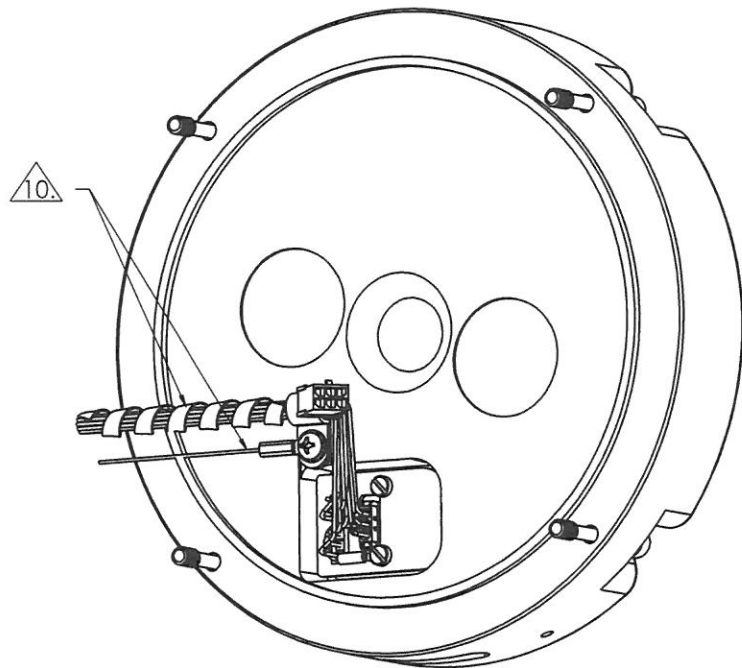


9. a) THRU e)
PARTS INSTALLED ONTO
DSP CIRCUIT BOARD
SCALE: 2/1

WIRELESS OPTION VIEW
AND
MEMORY CARD LOCATION



ENDCAP INTERIOR VIEW



ONE SIDED TAPE
CUT DIMENSION
SCALE: 2/1

PROPRIETARY INFORMATION

THIS DOCUMENT CONTAINS INFORMATION
PROPRIETARY TO TELEDYNE RD INSTRUMENTS,
AND SHALL NOT BE DISCLOSED, DUPLICATED
OR USED AS A BASIS FOR DESIGN,
MANUFACTURE, OR SALE OF APPARATUS
WITHOUT EXPRESS WRITTEN PERMISSION
OF TELEDYNE RD INSTRUMENTS.

TITLE: TOP ASSY, SENTINEL-V WITH BTRY PK, SC ENDCAP			
SIZE D	CAGE CODE 9W050	DWG NO. 70D-9004	REV F
SCALE 1:1		SHEET 3 OF 3	